



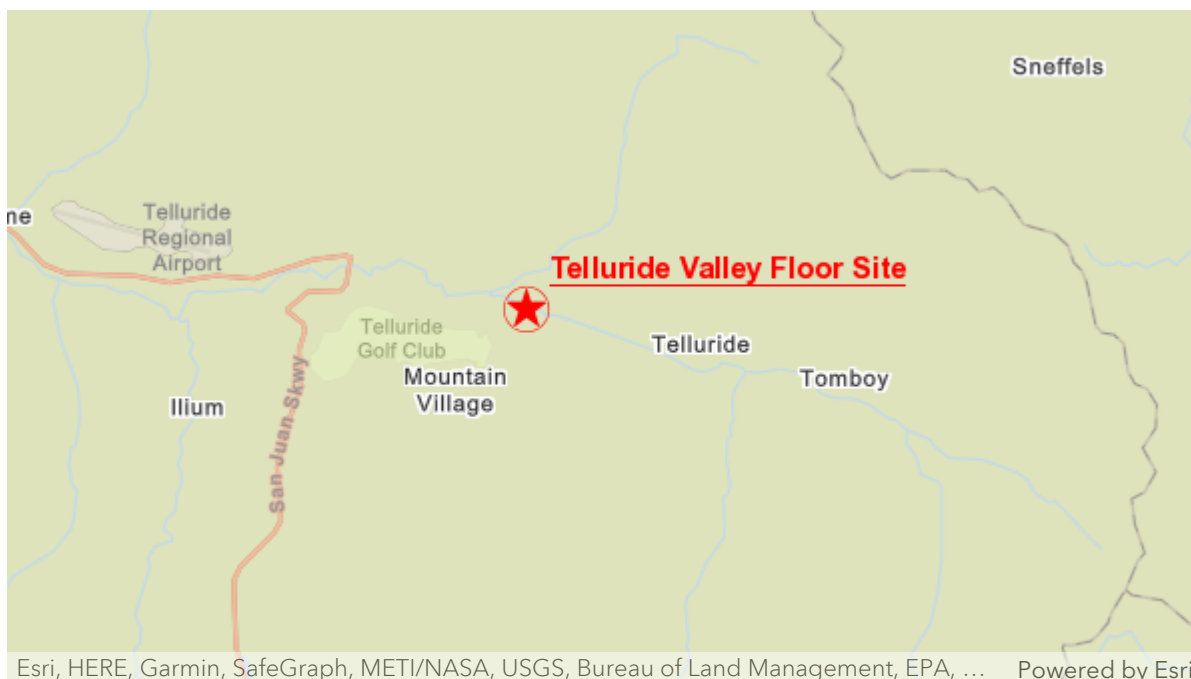
# Telluride Valley Floor

A U.S. EPA Region 8 Story Map

August 9, 2021

## Overview

U.S. Environmental Protection Agency, in conjunction with U.S. Forest Service, is conducting a joint Removal Action at the Telluride Valley Floor Site, which is located in Telluride, CO.



Site Location Map

EPA is the lead agency conducting the cleanup and has assigned Federal On-Scene Coordinator, Joni Sandoval, to oversee field activities. The Removal Action will be conducted in 2 phases. The first phase will be an Emergency Response to stabilize eroding tailings in the San Miguel River, as well as provide dust and erosion control in an area closed off by signage containing mill tailings, that is frequently trespassed by bikers and trail passers. This phase one will be conducted in November, 2020. The phase 2 Time Critical Removal Action will be conducted in 2021 and is still in the planning phase. This second action will be conducted to mitigate the remaining tailings that pose a threat to human health and the environment.

This Story Map will provide an up to date summary of work progress during the Phase 2 Time Critical Removal Action.



## Background

### Phase 1

The Site is mixed ownership (small area of Town Property with mostly Federal lands), and was referred to the Environmental Protection Agency (EPA) by the U.S. Forest Service (USFS), due to resource and budgeting constraints in Fall of 2020. The EPA attended a Site Visit with the USFS, Town of Telluride, and Trout Unlimited to conduct a visual Site Evaluation, as well as gain familiarity with the assessment done by the USFS in prior years. Tailings were visibly sloughing off into the San Miguel River and being stirred up by bikers and trail users who did not heed warning signs along the River. The OSC personally observed multiple recreators passing through the area in a short time, including a gentleman with a baby in a bicycle seat on a bike riding through tailings. The tailings contain high levels of lead on average between between 2,000-10,000 ppm, although some areas contain levels up to 100,000 ppm. Arsenic is also above the acceptable exposure limits.



Site Layout

Actions completed as part of Phase 1 include:

- Installation of erosion controls to mitigate runoff from the excavation and stockpile operations.

- Removed up to 3,000 cubic yards of tailing and stabilized/armored bank area.
- Installed a low water crossing for moving equipment and material.
- Stabilized hike/bike area by placing a thin cap of gravel over the tailings.
- Placed barriers around contaminated areas, until mitigated or cleaned up.
- Hauled excavated contaminated material to state-designated, responsible party-owned on-site repository.

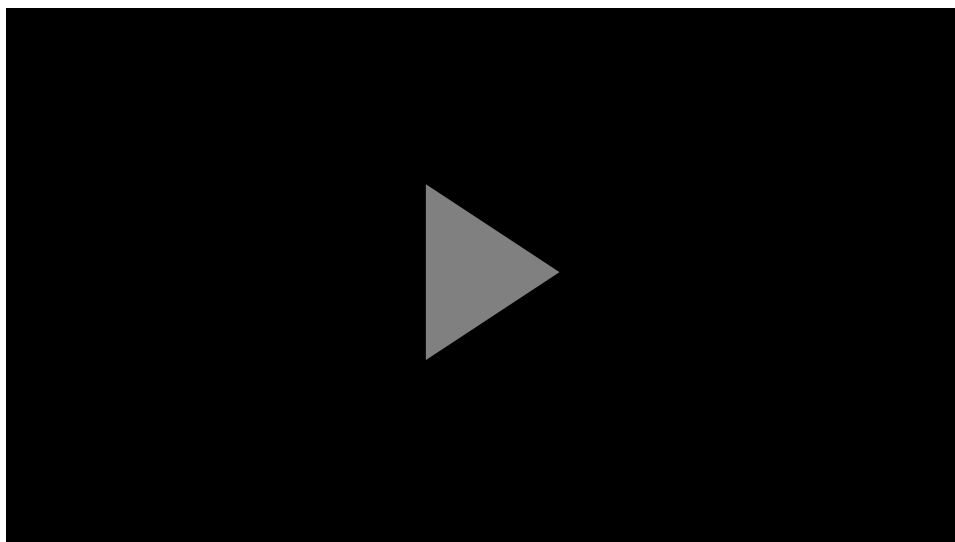


Completed North Riverbank Lining and Arm





Installed Drainage Controls



Overview of Activities at TVF Boomerang Road Site



## Phase 2

### Operational Objectives

The objectives during this operational period (07/26/21 - 08/01/21) were as follows;

1. Reroute recreational trails around the work zone.
2. Keep stakeholders informed of EPA removal actions.
3. Locate office near main street.
4. Create and emphasize a safe and efficient work zone for EPA crews.
5. Install a recreational low water crossing for the bridge closure reroute.
6. Prepare ST1 area for tailings excavation by removing sparse/stunted trees on SE side of the bridge.
7. Begin excavation of tailings in ST1 and haul to repository.
8. Conduct air sampling and particulate monitoring on-Site and in the community.
9. Ensure daily data management functions are up to date to ensure accurate website reporting.

To view an overview of activities that are expected to be completed onsite, please watch the videos below.



TVF Boomerang Road Removal action



TVF Boomerang Road Removal Plan Updates Based on Community Feedback



## Current Activities

During the Current Operational Period the EPA Site Team worked Monday thru Saturday. Operations were hampered by a series of heavy afternoon thunderstorms and lightning. During this period the Team:

- Continued site setup, building up roads/turn around points, trail reroutes, and creating truck cleaning areas.
- Placed clean rock/road base that were dropped at the site and repository to create truck cleaning areas and safer roads for waste haulage.
- Met with stakeholders on site updates.
- Started excavation/hauling on Thursday, July 29, 2021 in location ST1(a total of approximately 230 cubic yards or 23 truck loads were removed from the site).
- Deployed air sampling and monitoring locations along the trucking route to capture background levels and assess any potential impacts associated with EPA trucking operations for dust and air borne contamination. Sample results and real time data can found on the Telluride Valley Floor Site Updates page.

- No office location within town has been secured, EPA will continue to follow up on any leads or as space becomes available.



Excavation of tailings within the ST1 tailing boundary near the San Miguel River.



Trail closure with map depicting direction of rerouted trail running east to west.



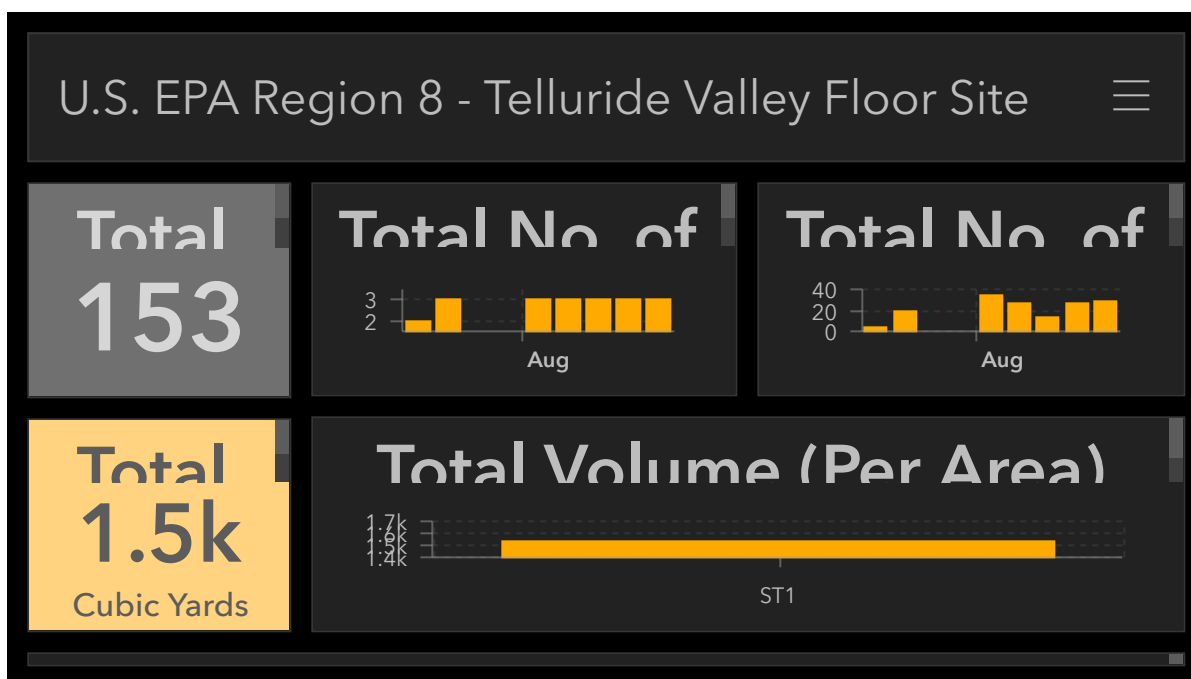


Air Monitoring station near Court House with continuous dust particulate monitoring during transportation of excavated tailings to the repository.

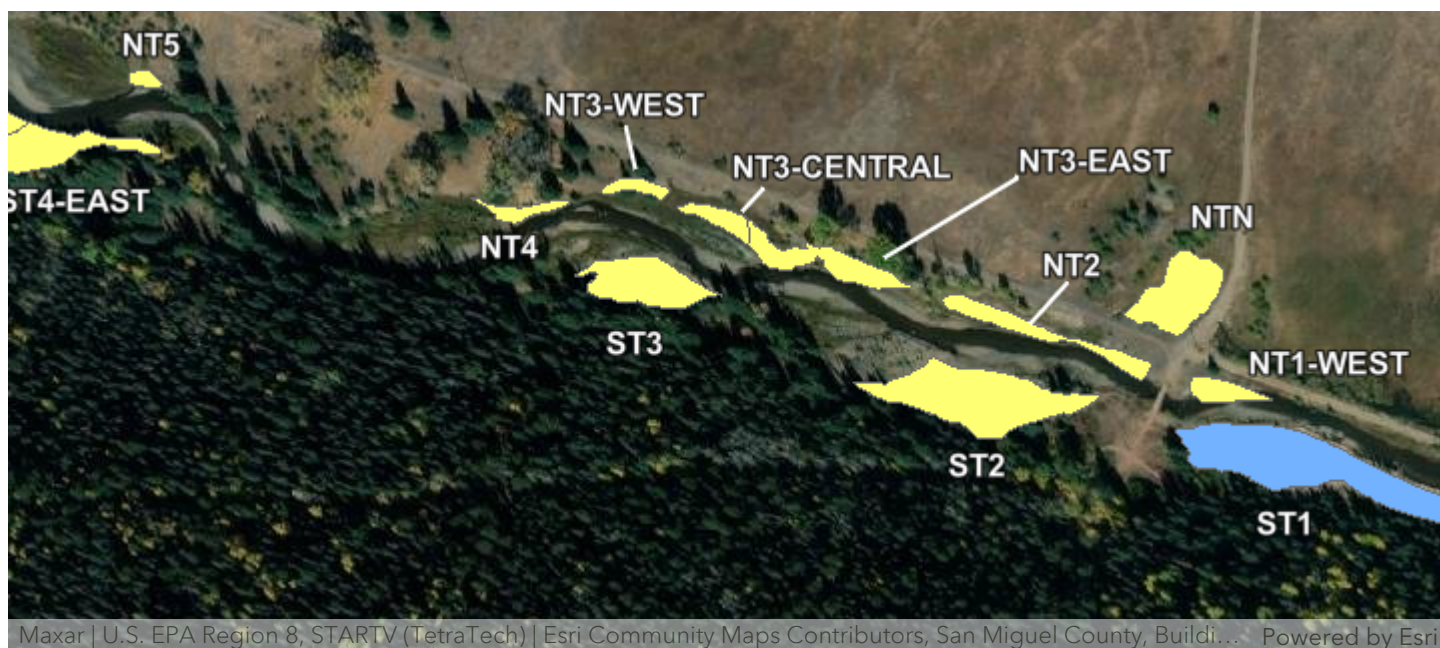


Newly installed bridge connecting the eastern and western sides of rerouted recreational trail.

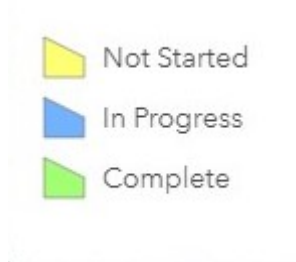
A summary providing on overview of vehicle traffic and material transported to the repository is included below.



Truck Load Dashboard



Excavation progress from the tailings piles is displayed here. The tailings areas are depicted in yellow to indicate that excavation progress has not yet started, blue to indicate that excavation is in progress, and green indicates it is complete.



## Safety Issues

EPA will adhere to all CDC and local recommendations pertaining to COVID-19 during the site work.

EPA will adhere to all construction and hazardous substance safety best management practices.

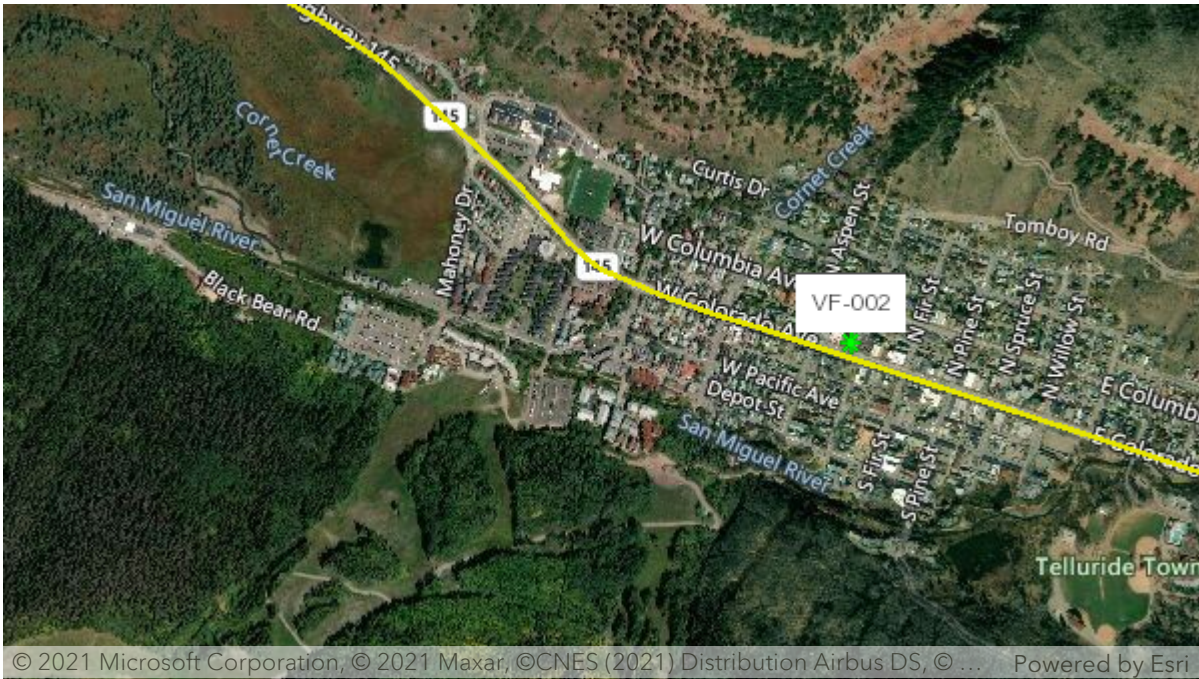


## Planned Activities

For the next Operational Period, August 2 thru August 8, 2021, the EPA Site Team Plans to:

1. Keep stakeholders informed of EPA removal actions.
2. Continue to seek office space on or near main street.
3. Continue to create a safe and efficient work zone for EPA crews.
4. Continue excavation of tailings in ST1 and haul to repository.
5. Conduct air monitoring and sampling.
6. Ensure daily data management functions are up to date to ensure accurate website reporting.





Work Areas, Air Monitoring, and Vehicle Route

## Timeline



NOTE: Timeline may change due to weather and/or other constraints.

## Map Viewer

A map viewer can be accessed by clicking the button below.



[Map Viewer](#)

## More Information

Archived StoryMaps from previous operational periods can be found on the Documents Section of the EPA website.

[Archived Story Maps](#)

More information can be found on the EPA website. Please click the button below to connect to the EPA website.

[EPA Website](#)