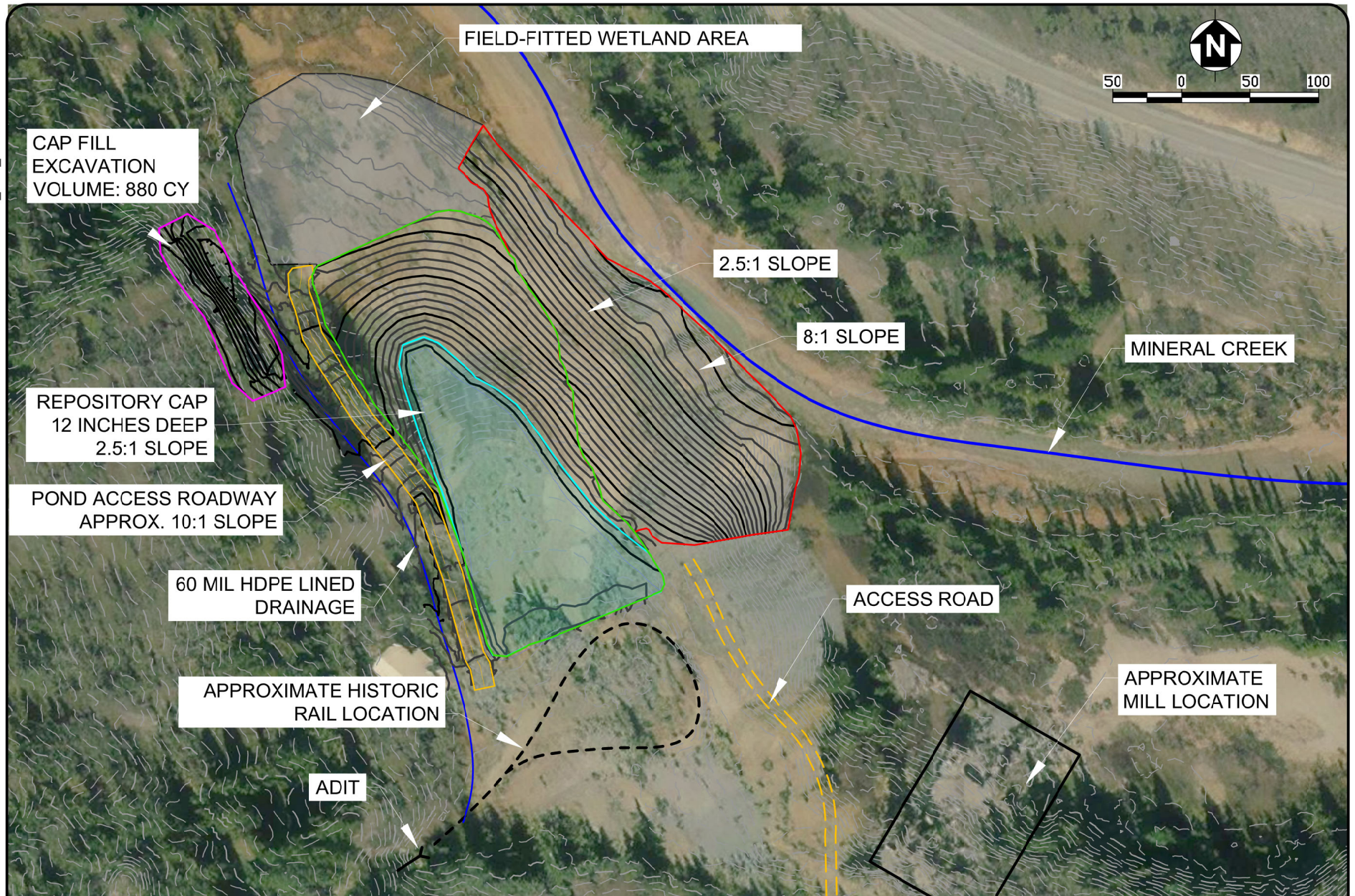


6/21/2022 2:09 PM - S:\CAD\FEDERAL\PA\START V REGION 8\NORTH STAR\CAD\POND EXCAVATION MODEL FILES\NORTH STAR_FG7_.DWG



<div></div> <div>APPROXIMATE REMOVAL VOLUME: 11,200 CY 2.5:1 = 40% = 21.8° SLOPE 8:1 = 12.5% = 7.1° SLOPE</div>	<div></div> <div>FIELD-FITTED WETLAND AREA</div>
<div></div> <div>POTENTIAL STOCKPILE AREA VOLUME: 12,200 CY 2.5:1 = 40% = 21.8° SLOPE</div>	<div></div> <div>REPOSITORY CAP VOLUME: 880 CY 2.5:1 = 40% = 21.8° SLOPE</div>
<div></div> <div>POND ACCESS ROADWAY 10:1 = 10% = 5.7° SLOPE</div>	<div></div> <div>CAP FILL EXCAVATION 2.5:1 = 40% = 21.8° SLOPE</div>



TETRA TECH

www.tetrattech.com

1560 Broadway, Suite 1400
Denver, Colorado 80202
PHONE: 303-312-8855

U.S. ENVIRONMENTAL PROTECTION AGENCY

NORTH STAR MINE
START V REGION 8

CONCEPTUAL
NORTH STAR EXCAVATION

Project No.:

Date: 06/21/2022

Designed By: ARC

FIGURE

7

Bar Measures 1 inch