

New Mexico Wildfires Report #6

July 8, 2022

INCIDENT OVERVIEW

Due to wildfires throughout the State, including a number over 1,000 acres, the State of New Mexico made a Disaster Declaration on May 3, 2022. The President subsequently approved a federal disaster declaration on May 4, 2022, to provide federal funding to State and eligible local governments and certain private nonprofit organizations. The declaration covers the counties of Colfax, Lincoln, Mora, San Miguel, and Valencia. The President decreased the state cost share from 25% to 0% on June 11, 2022, for a 90-day period from April 5 to July 3, 2022.

EXECUTIVE SUMMARY

- On May 11, 2022, EPA received a signed Federal Operational Support (FOS) Mission Assignment (MA) for \$217,000 with a Projected Start Date of May 11, 2022, and Completion Date of July 11, 2022. This MA covers providing appropriate personnel to staff the Regional Response Coordination Center (RRCC), Initial Operating Facility (IOF), Joint Field Office (JFO), or other regional, state, tribal, territorial, or local teams, including Rapid Needs Assessment Teams, and/or facilities to include virtual as requested to support disaster operations.
- On May 14th and 15th, 2022, Region 6 mobilized a Subject Matter Expert (SME)/State EOC Liaison and EPA Superfund Technical Assistance and Response Team (START) contractor respectively. The SME and START worked with the State of New Mexico Department of Homeland Security and Emergency Management (NMDHSEM) and the New Mexico Environment Department (NMED) to develop products outlining cleanup needs and applicable laws and regulations required for property owners who clean up properties on their own.
- On June 15, 2022, EPA received a Direct Federal Assistance (DFA) MA for \$2,000,000 with a Projected Start Date of June 14, 2022, and Completion Date of July 3, 2022. This MA covers oil and hazardous materials response operations including disposal of household hazardous waste (HHW) and bulk asbestos, in support of FEMA disaster operations under Emergency Support Function (ESF) #10 of the National Response Framework (NRF).

- On July 1, 2022, EPA received an extension to August 1, 2022, and funding increase of \$1,653,017 for the DFA MA to bring the MA ceiling to \$3,653,017. The extension allows additional time to conduct HHW and bulk asbestos collection, management, and transportation and disposal. This amendment also extends the 0% state cost share.
- On July 7, 2022, EPA received an extension to August 1, 2022, and funding increase of \$31,500 for the FOS MA to bring the MA ceiling to \$248,500. The extension allows additional time to provide personnel to the RRCC, IOF, or JFO, as needed to support disaster operations.

SIGNIFICANT ACTIONS

- A Liaison Officer (LNO) mobilized on June 23, 2022, is staffing the Joint Field Office (JFO) in Santa Fe and providing daily updates on EPA activities and liaising with FEMA and other responding agencies.
- Two Task Force Leaders mobilized on June 26, 2022, to lead the waste assessment and collection teams in Mora and San Miguel Counties.
- Collection of HHW and bulk asbestos began in Mora and San Miguel on June 27, 2022. Assessment and collection teams continued operations in Mora and San Miguel Counties, with a focus on the counties prioritized areas of concern for flooding during the upcoming monsoon season. As shown in Map 1 in this Management Report, the priority areas in Mora County are Rio de la Casa Canyon and Holman Hill. The priority areas in San Miguel County are Mineral Hill, Gallinas Canyon, San Ignacio and Cañoncito de Manuelitas.
- The IMT developed a plan with the Mora and San Miguel Sheriff's Offices for handling and disposal of ammunition found at properties. The ammunition will be staged at a county facility with EPA providing the disposal. As of July 7, 2022, no ammunition has been found.

COORDINATION WITH STATE AND OTHER PARTNERING AGENCIES

- EPA continues to participate in the Debris Management Task Force (DMTF) which is composed of debris experts from NMED, NMDHSEM, FEMA, and the US Army Corp of Engineers (USACE).
- The Debris Management Task Force and the Outreach Group are developing plans for additional outreach to ensure ROEs are received and validated by the July 22, 2022, cut-off date.
- NMED is having discussions with FEMA and the USACE regarding how USACE will perform HHW collection after August 1, 2022.

EPA RESOURCES

EPA Resources (As of July 8, 2022)					
Agency	Remote IMT	REOC	JFO	IMT	TOTAL
EPA	3	9	1	5*	18
NMED	0	0	0	1	1
START	0	0	0	10	10
ERRS	0	0	0	12	12
Total	3	9	1	28	41

* The Safety Officer will be counted until he completes his demobilization.

OPERATIONS

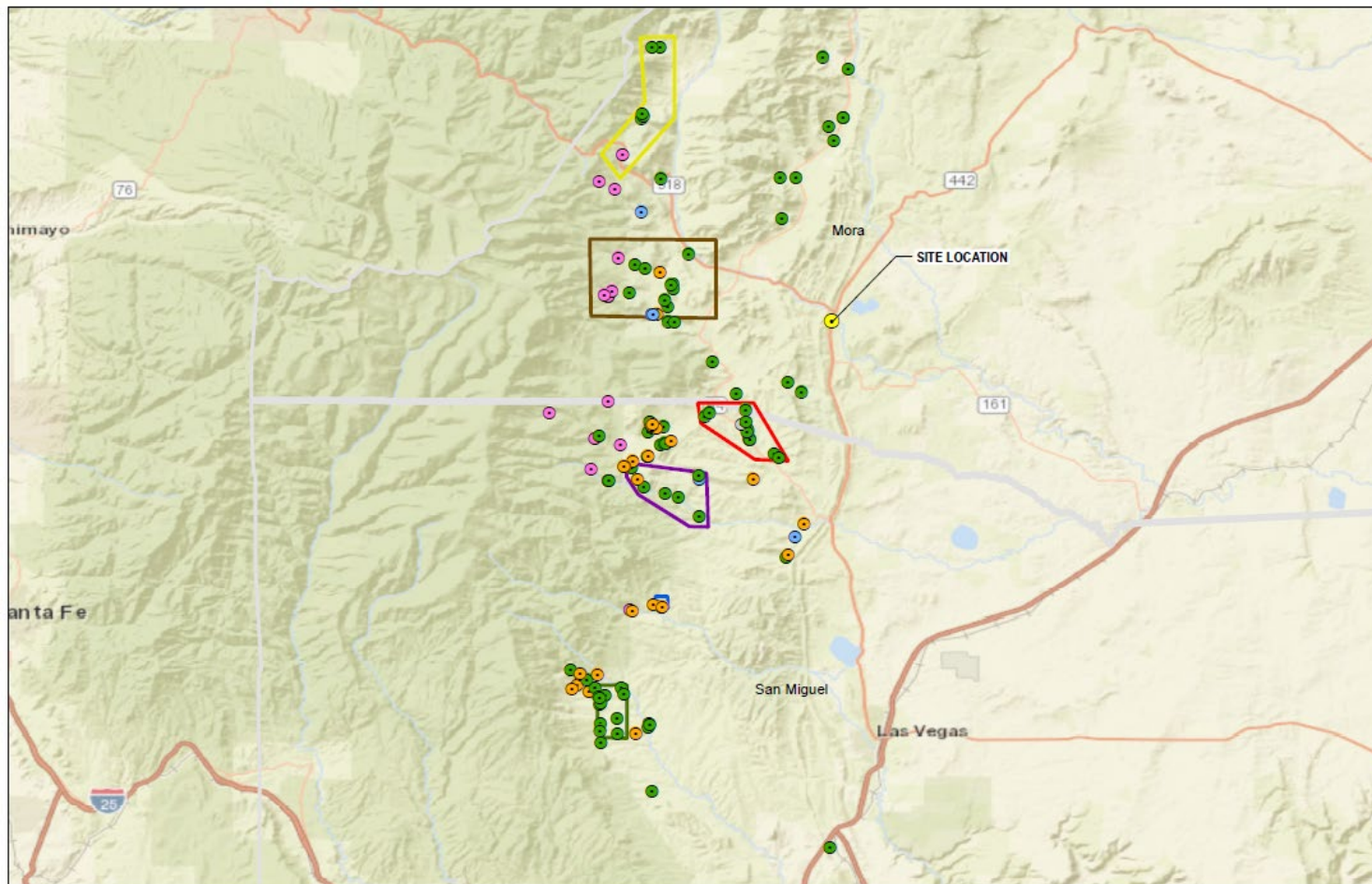
On July 7, 2022, EPA teams worked in Mora and San Miguel County. An additional set of 19 ROEs was received from the State, 18 new properties and one previously withdrawn ROE was resubmitted. Most of the properties in the priority areas identified by the counties have been addressed. As new ROEs are received in these areas, they will be addressed.

The disposal site for the non-hazardous/non-asbestos waste was screened for EJ. The site in Rio Rancho, NM was below the 80th percentile for all indices in a 1, 3 or 5-mile radius. As additional waste disposal locations are chosen, the IMT will ensure the locations are screened for EJ to ensure they are below the 80th percentile.

PROGRESS METRICS FOR 2022 NEW MEXICO WILDFIRE HHW COLLECTION

Current ROE Status	Mora		San Miguel		Total	
	7/7/2022	Total	7/7/2022	Total	7/7/2022	All
ROE Received	0	45	18	119	18	164
ROE Withdrawn	0	0	0	1	0	1
ROE Ineligible*	0	10	0	7	0	17
Unable to Access	0	0	0	0	0	0
Phase 1 Complete	1	30	8	70	9	100
Remaining ROEs	---	5	---	41	---	46

Map 1 – Areas of Operations Map



Legend ROE Property ● Assessed ● Phase 1 Complete ● ROE Ineligible ● ROE Received ● ROE Withdrawn		Area of Concern ■ Cañoncito de Manuelitas ■ Gallinas Canyon ■ Holman Hill ■ Mineral Hill ■ Rio de la Casa Canyon		■ San Ignacio ● Site Location	 New Mexico	2022 NEW MEXICO WILDFIRES AREAS OF OPERATIONS MAP MORA AND SAN MIGUEL COUNTIES	 SCALE IN MILES 0 3.5 7 For Official Use Only Printed via Web	 EPA GIS Printed: 9:23:57 AM 7/8/2022
---	--	--	--	----------------------------------	----------------	--	---	---

PICTURES



Picture 1: Teams working property in San Miguel County



Picture 2: Cylinders at staging area



Picture 3: Destroyed Home in San Miguel County