

CRUDE OIL PIPELINE RELEASE

03-11-2022

Cahokia Creek, Edwardsville, Illinois, USA

*Adam Vrabec
Federal On Scene Coordinator
U.S. Environmental Protection Agency*

INCIDENT DESCRIPTION



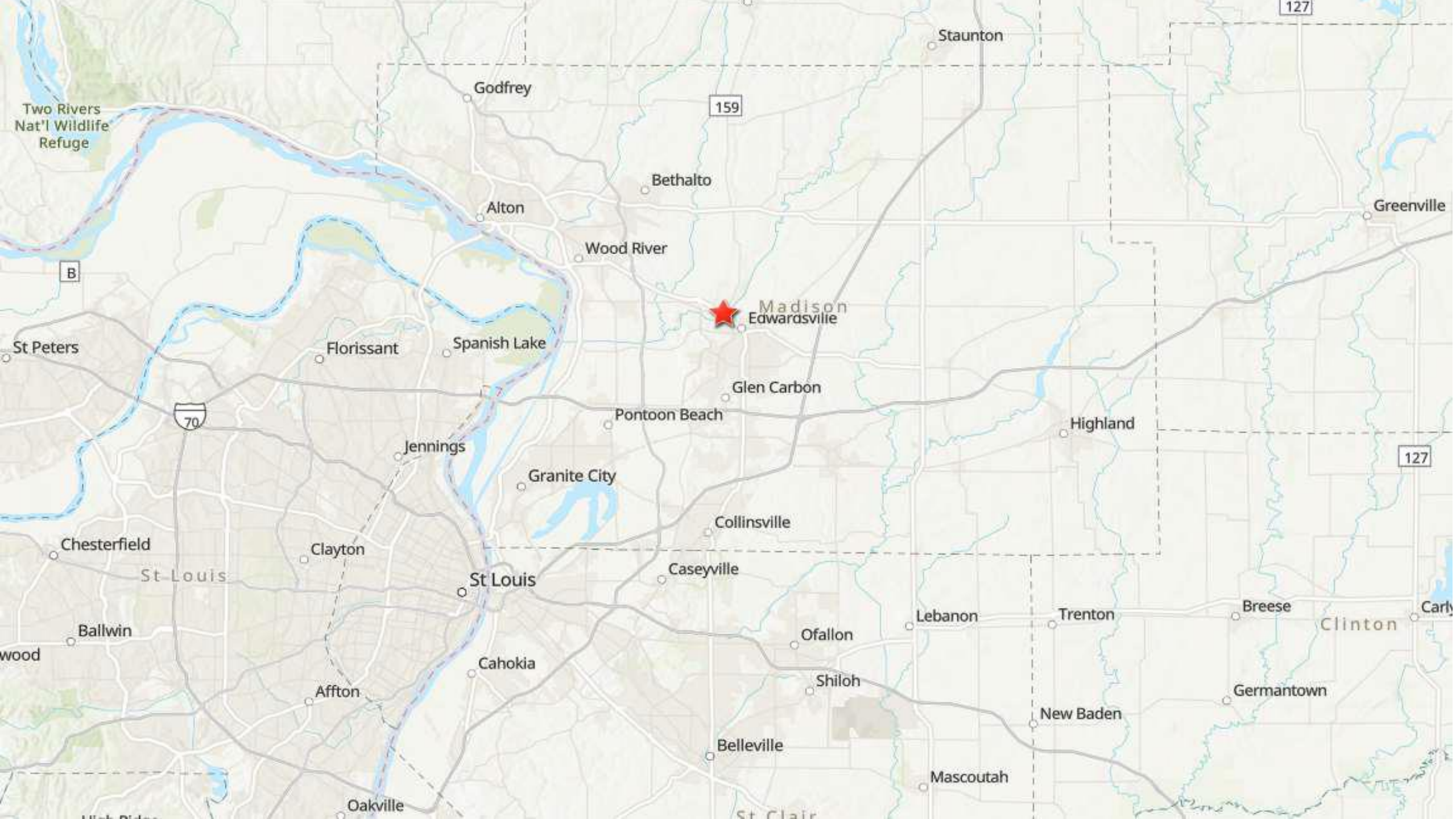
On 3/11/22 PRP reports to NRC that a release of 3000 barrels (138,600 gallons) of oil has occurred near IL 143 and Old Alton Road

Updated to 3900 barrels to NRC

The pipeline is a 22" crude line that runs from Wood, IL to Patoka, IL

The crude was a Wyoming Asphaltic Sour

Oil was entering Cahokia Creek, which flows into the Cahokia Channel to the Mississippi River.





Search Google Maps



Groceries

Restaurants

Takeout

Hotels

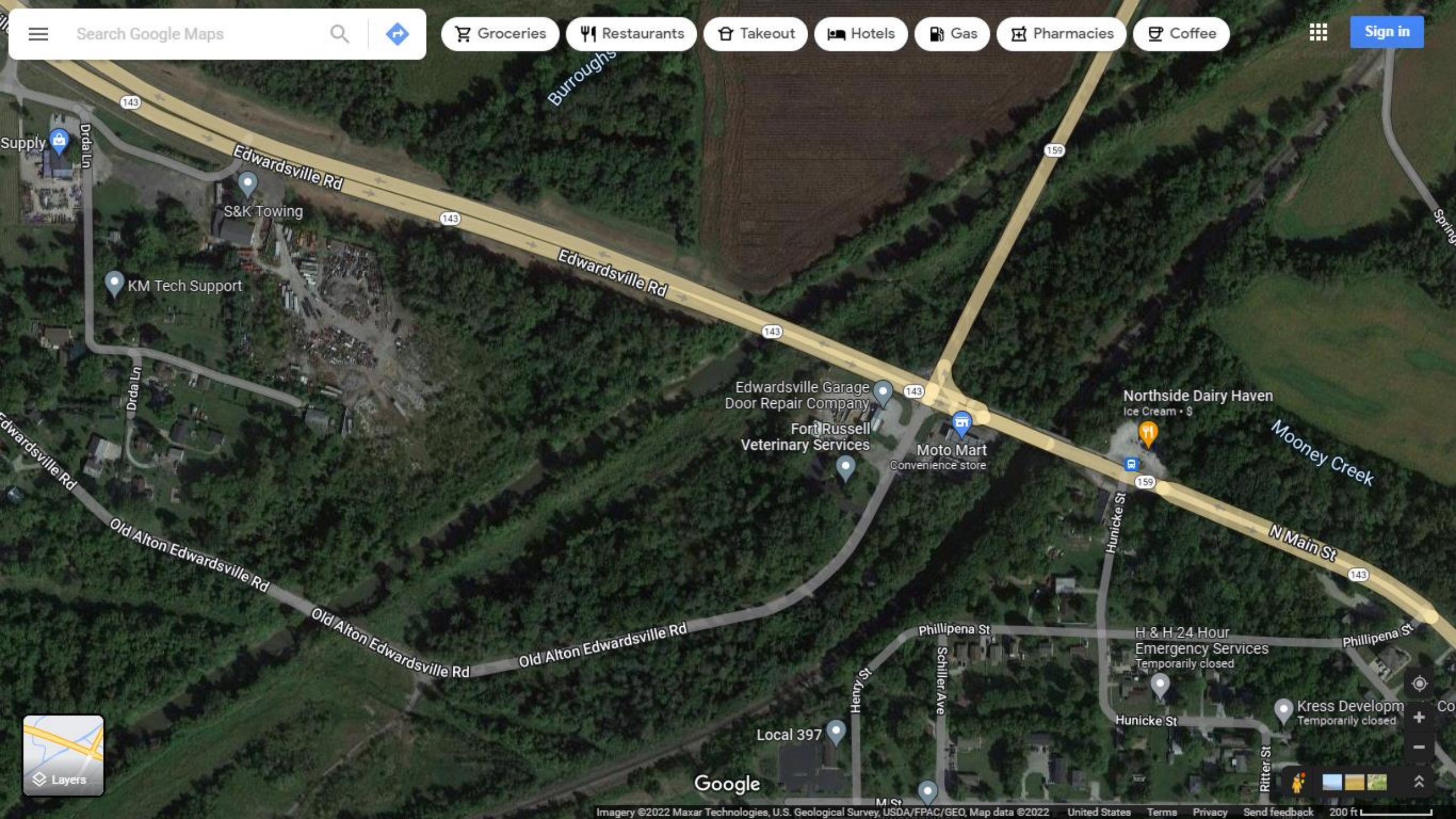
Gas

Pharmacies

Coffee



Sign in



Google



AGENCIES INVOLVED

USEPA

IEPA

USCG

Madison County EMA and HAZMAT

City of Edwardsville FD

IDNR

PHMSA

NTSB

Illinois Dept. of Conservation

NGO's

INCIDENT COMMAND

Unified Command consisted of PRP, USEPA, IEPA, and Edwardsville, IL FD

Roxana Community Center was utilized for Command Center

Full ICS was established with 24 hour operations the morning of the 12th

PRP deployed OSRO's and subcontractors to place boom and recover oil.



7 DAYS-4 SEASONS



Initial Call Weather: 34°

Day 1: 34-22°

Day 2: 33-15°

Day 3: 34-33°

Day 4: 68-45°

Day 5: 70-43°

Day 6: 70-50°

Day 7: 77-55°

DIVISIONS 1-4

**Division 1=Ground Zero @ Cahokia Creek, Hwy 143 & 159.
(Marathon / Geeding Construction /SET)**

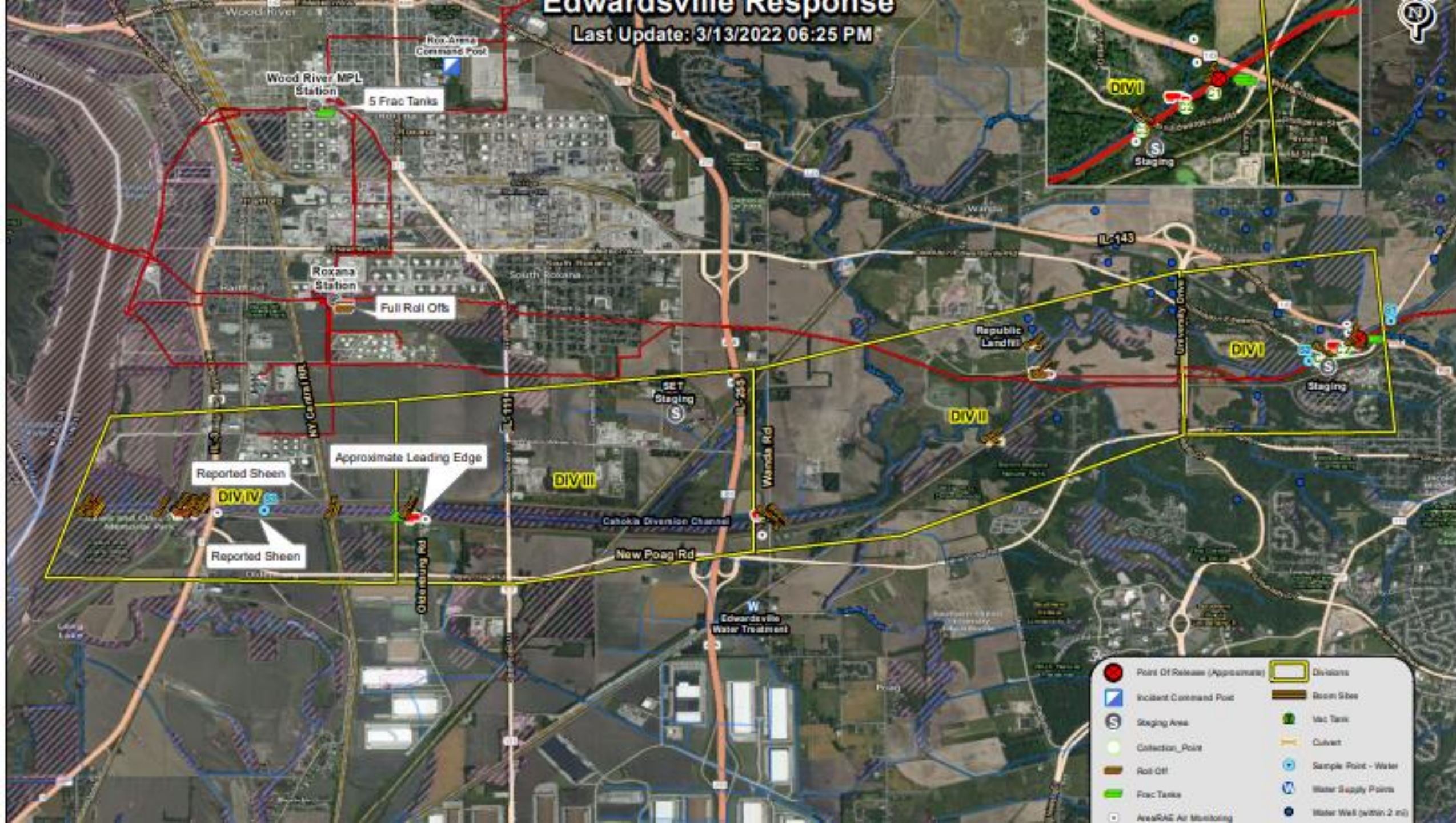
**Division #2=Wanda Bridge (Marathon / Numerous Vac Truck
Companies)**

Division #3=Oldenberge Road (ERLLC / Marathon)

Division #4=Frontage Park (Marathon / Iron Eagle / ERLLC)

Last Update: 3/13/2022 06:25 PM

Last Update: 3/13/2022 06:25 PM





Oldenburg Rd











CREEK AREA BEHIND LANDFILL







**OSRO DEPLOYING
BOOM BEHIND
LANDFILL**











ELASTEC
American Marine
www.elastec.com

RESOURCES ON SITE

Equipment Resources (as of 3/17/22 @ 0600 ICS 209)			
Description	Ordered	Available/Staged	Assigned
Light Plants			44
Tanker Trucks			2
Frac Tanks			32
Roll-Off (Soft-Top)			10
Vac Trucks			44
Roll-Off (Hard-Top)	100		26
Skimmers			21
Mats			850+
Compressors			16
Hard Boom (ft)			3450
Sausage Boom (ft)			1100
Steam Genies			9
Trackhoes			7
Drones			1
Dozers			1
Helicopters			1
Telehandler			2
Skid Steer	4		7
Boats			18
Pump Transfer			5

VARIOUS BOOM DEPLOYMENTS WITHIN DIVISIONS



Division 3-Oldenburg Road.

**Note: No bulk oil got past
Div3.**











WORK IN WETLAND AREA



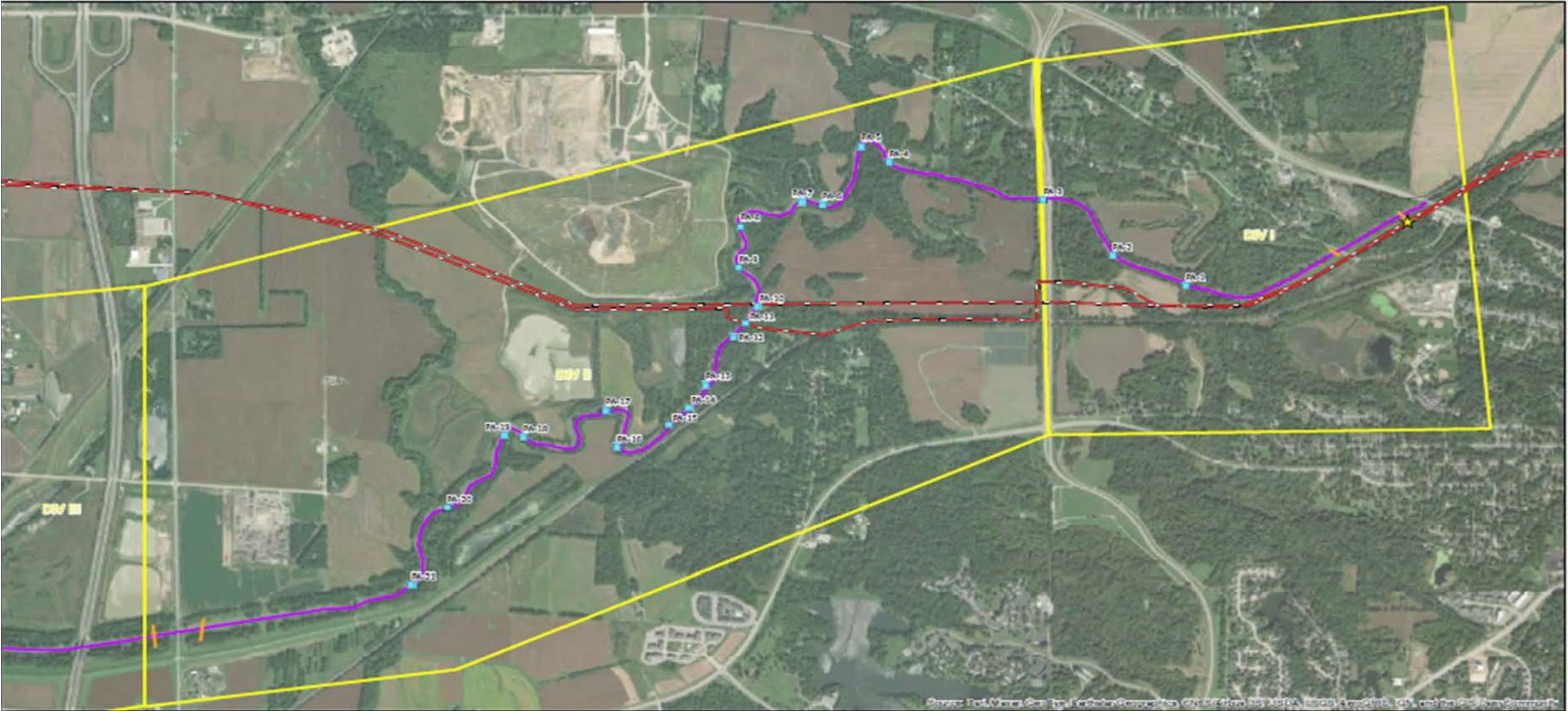


POLING SEDIMENT ASSESSMENT

Used to determine if submerged oil was present in the creek

24 locations were identified for assessment

Teams consisted of PRP Consultant, START, and PRP OSRO



Source: Esri, DeLorme, GeoEye, IGN, Aerotech, GEBCO, CNR, IGN, USGS, USDA, NOAA, FEMA, and the U.S. Army Corps of Engineers

Legend

- Sediment Assessment Poling Location
- ★ Point of Release
- Pipeline
- Boom
- Divisions
- Cahokia Canal and Cahokia Creek

FIGURE 2

SEDIMENT ASSESSMENT POLING LOCATIONS
MARATHON
EDWARDSVILLE, IL



PROJECT NO. MPL/EDWARDSVILLE	PREPARED BY SAA	REP SCALE 200,000	
DATE 8/11/2022	REVIEWED BY KAL	MAP SCALE 2 INCH = 3,600 FEET	

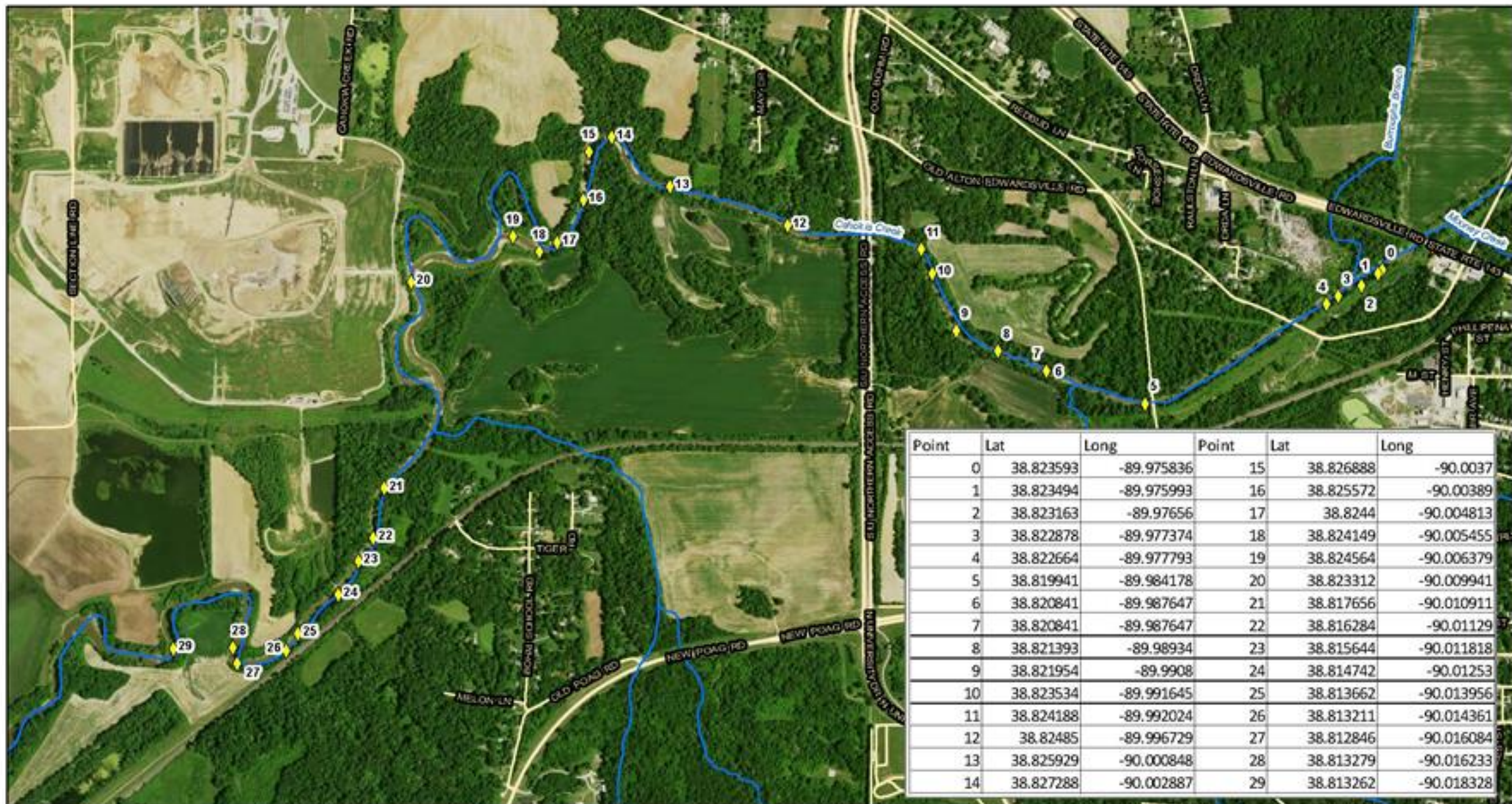
SCAT (SHORELINE CLEAN-UP ASSESSMENT TOOL/ TEAM)

Was conducted after majority of heavy oil was recovered and just sheen being observed in the creek

Identified small areas or pockets still with heavy oil present- GPS and mark

Recovery teams would follow up and remove the identified locations

Sediment Assessment Poling Plan was created and executed



Point	Lat	Long	Point	Lat	Long
0	38.823593	-89.975836	15	38.826888	-90.0037
1	38.823494	-89.975993	16	38.825572	-90.00389
2	38.823163	-89.97656	17	38.8244	-90.004813
3	38.822878	-89.977374	18	38.824149	-90.005455
4	38.822664	-89.977793	19	38.824564	-90.006379
5	38.819941	-89.984178	20	38.823312	-90.009941
6	38.820841	-89.987647	21	38.817656	-90.010911
7	38.820841	-89.987647	22	38.816284	-90.01129
8	38.821393	-89.98934	23	38.815644	-90.011818
9	38.821954	-89.9908	24	38.814742	-90.01253
10	38.823534	-89.991645	25	38.813662	-90.013956
11	38.824188	-89.992024	26	38.813211	-90.014361
12	38.82485	-89.996729	27	38.812846	-90.016084
13	38.825929	-90.000848	28	38.813279	-90.016233
14	38.827288	-90.002887	29	38.813262	-90.018328

★ Approximate Release Location

NHD Stream

Edwardsville Response
Oil Recovery Locations
Upstream



SCAT-OSRO BOAT OPS

OSRO Boat Ops utilizing pumps, hoses and hand tools to remove contaminated debris caught in and around banks and other creek obstacles.



















EXCAVATION OF IMPACTED SOIL NEAR SPILL LOCATION





WORK ALONG PIPELINE CORRIDOR

AIR MONITORING

USEPA START Contractor was conducting real time monitoring using handheld meters throughout the community.

Benzene, VOC's, LEL, and H2S were being monitored for.

Summa Cannister's were used to obtain air samples to send to lab

PRP was conducting similar air monitoring, along with personnel monitoring

WATER SAMPLING

Identified 6 locations to pull water samples from

PRP split samples with USEPA at those locations

Coordinated with IEPA on what to analyze for

Private drinking water wells in the area were sampled by PRP with oversight of IDPH

WILDLIFE

Wildlife Impacts (as of 5/13/22)						
Description	Impacted Total	Cleaned	Released	DOA	Euthanized	Died in Facility
Ducks	20	6	6	11	2	1
Hawk	1				1	
Frog	2	1	1	1		
Muskrat	1			1		
Blue Heron	3			3		
Beaver	5		2	1	2	
Turtle	4		3			1
Owl	1	1	1			
Snake	3		3			
Fish	14			14		
Total	54	8	16	31	5	2

AMOUNT RECOVERED

Oil product bbls = 2578 bbls = 108,276 gallons

19, 572 barrels of oil and water mix = (822,024 gallons!!!)

Oily soils – 80 tons

Debris = 300 tons

Absorbents = 84 tons


Approximately 18,000 tons of non-hazardous soil

Approximate estimate of bbls lost was updated to 3500 bbls



LESSONS LEARNED

Set up Divisions that
are geographically
and operationally
manageable



Good Communication
and Cooperation within
Unified Command



Coordination with
NTSB investigation



Depending on type of
oil, different recovery
methods might work
better