

January 9, 2007

Mr. Dean Ullock
On-Scene Coordinator
U.S. Environmental Protection Agency Region 4
Sam Nunn Atlanta Federal Center
61 Forsyth Street
Atlanta, Georgia 30303

**Subject: Incident Response Letter Report
Perry Creek Pipeline Oil Spill Emergency Response
Oil City, Yazoo County, Mississippi
Federal Project Number (FPN): E07405
TDD No.: TNA-05-001-0021
Contract No.: EP-W-05-053**

Dear Mr. Ullock:

The T N & Associates, Inc. (TN&A) Superfund Technical Assessment and Response Team (START) has prepared this Incident Response Letter Report detailing emergency response activities in support of the U.S. Environmental Protection Agency (EPA). The scope of this response was to conduct removal oversight and support the EPA On-Scene Coordinator (OSC) at an emergency oil spill response near Oil City, Mississippi. Specifically, START was tasked to conduct removal oversight activities, document on-site conditions with written logbook notes and still photographs, and prepare an Incident Response Letter Report. Senior Scientist Adam Davis was the START representative present during the majority of site activities. Removal activities were conducted by the Potentially Responsible Party's (PRP's) emergency response contractor, United States Environmental Services, LLC (USES).

This Incident Response Letter Report summarizes the incident, the response, and provides a summary of the removal action activities.

Site Background

On October 31, 2006, at approximately 0700, the Tinsley Field Manager for Dufour Petroleum, Inc. (Dufour), Mr. Bob Coleman, discovered a 4-inch gathering pipeline carrying crude oil had ruptured, and that oil discharge from this line had reached Perry Creek. The pipeline break occurred in an upland area approximately 50 feet above a steep and narrow gully with intermittent flowing water. Approximately 15 feet of the pipeline was exposed and unsupported. The break occurred near the middle of the unsupported section. Prior heavy rains in the hilly terrain surrounding the pipeline may have led to erosion of the soil supporting the pipeline. The Global Positioning System (GPS) coordinates from the Point of Release (POR) are 32° 40.921' North latitude and 90° 27.002' West longitude.

Mr. Coleman immediately notified the Mississippi Department of Environmental Quality (MDEQ) Emergency Response Division, Dufour, and Dufour's on-call emergency response removal contractor, United States Environmental Services, LLC (USES). A representative of Dufour contacted the National Response Center at 0900 hours on October 31, 2006.

At 1130 hours that same day, EPA requested TN&A START to provide emergency response personnel to the spill incident near Oil City, Mississippi. The START Emergency Response Coordinator, Mr. Greg Kowalski, collected site details and coordinated mobilization activities with the EPA phone-duty OSC, Mr. Terrence Byrd. TN&A START utilized their Mobile, Alabama, team-subcontractor Aerostar Environmental Services (AES) to respond to the impacted area. START generated a Health and Safety Plan, acquired 311 documentation, and deployed to the affected area at 1300 hours on October 31, 2006.

At 1430 hours, EPA OSC, Mr. Dean Ullock, arrived at the site near the leading edge of the spill and met with Ms. Shannon Lowery, the State On-Scene Coordinator (SOSC) with MDEQ. At 1530 hours, OSC Ullock met with the PRP representative, Mr. Bob Coleman, at the POR as the break in the pipeline was being repaired. The OSC received a debrief of previous and ongoing activities in response to the incident. START arrived on site at 1630 and met with OSC Ullock at the Incident Command Post (ICP) established by USES near Dufour's Tinsley Field Office located off of Tinsley Road. At 1730 hours, an incident command meeting was held at the ICP and the Incident Command System (ICS) was established with EPA, MDEQ, USES, and Dufour. All parties provided oversight

and site management coordination with the responsible party and appropriate regulatory agencies. USES maintained ICS documentation and an active Incident Action Plan (IAP) for each 12-hour operational period from October 31, 2006, to November 6, 2006. Copies of the IAPs are provided in Appendix A.

START maintained written and photo documentation, provided technical support of removal activities, and facilitated communication between all parties including assisting the OSC with obtaining informational updates for Pollution Reports (PolReps) and Clean Water Act (CWA) documentation.

Table 1 lists the names and contact information of individuals involved in the response.

Table 1
Table of Witnesses

Org./Agency	Primary Contact	Phone Number	Role/Activity
USEPA Region 4	Dean Ullock	251-441-5913	EPA OSC
MDEQ	Shannon Lowery	601-961-5231	SOSC
MDEQ	Ernie Shirley	601-961-5231	SOSC
USES	George Malvaney	601-955-4298	Removal Contractor
Dufour	Mike Howell	601-583-9991	PRP
Dufour	Bob Coleman	662-571-7463	PRP
TN&A/Aerostar	Adam Davis	251-583-1647	START

Physical Location

The oil-impacted area is approximately 4.5–5.5 miles long, beginning at the break in the pipeline. This point was designated as the Point of Release (POR). The POR is located off of Henderson Road, which is situated west of Oil City and south of Tinsley in Yazoo County. The latitude and longitude of the POR is 32°40.921' North and 90°27.002' West. Figure 1 illustrates the physical location of the POR, the oil-impacted area, and boom locations.

Site Characteristics

The POR is located in a heavily wooded area at an elevation of approximately 297 feet. Immediately downgradient of the POR is an unnamed intermittent stream that receives flow following precipitation events. The unnamed intermittent stream meanders in a southwesterly direction through a densely wooded area for approximately 0.5 mile before discharging into Ditch Branch. Ditch Branch flows primarily to the north for 2 miles before discharging into Perry Creek, which is a significant stream. The impacted area continues downstream in Perry Creek for approximately 3 miles, where it was initially contained at Boom 3, located approximately 0.7 mile north of the Perry Creek Road bridge and 0.4 mile west of Tinsley Road. The latitude and longitude of Boom 3 is 32°42.907' North and 90°28.137' West. No fish kills or other significant impacts to wildlife were observed in the impacted area.

Table 2 provides GPS coordinates for locations of interest (significant locations) in the oil-impacted area.

Table 2
GPS Coordinates

Description	Latitude (North)	Longitude (West)
Point of Release (POR)	32°40.921'	90°27.002'
Boom 1	32°40.827'	90°28.515'
Boom 2	32°42.466'	90°28.149'
Boom 3	32°42.907'	90°28.137'
Boom 4	32°43.430'	90°28.245'
Underflow Dam	32°40.401'	90°27.618'
Southern Natural Gas Easement	32°40.237'	90°27.789'

Assessment and Removal Activities

On October 31, 2006, Dufour immediately contacted USES upon discovery of the spill. Mr. Coleman and other employees of the PRP immediately shut down the source of the oil to the

pipeline and began working on the break in the pipeline. USES personnel were on site by 0900 and immediately began twenty-four hour oil recovery operations. A temporary cap was placed on the pipeline at 1530. Three oil-containing booms (Booms 1, 2, and 3) were in place along Perry Creek by 1600. Active oil recovery with oil skimmers and vacuum trucks commenced at the three boom locations by 1800.

On November 1, 2006, USES crews began active recovery of oily debris and clearing debris to allow oil to flow down to collection points. Construction of an underflow dam, located upstream of the POR, began at 16:00 and continued throughout the night. A contingency boom (Boom 4) was deployed by 18:00 to capture oil in the event of failure at Boom 3 (the leading edge of the spill).

At 0700 hours on November 2, 2006, construction of the underflow dam was completed and construction of a board road to the Southern Natural Gas pipeline easement began. Oil skimming operations continued at booms 1, 2, and 3. Skimming began at the underflow dam by 14:55.

On November 3, 2006, a shoreline assessment was conducted by OSC Ullock, Ernie Shirley, MDEQ, and START. An aerial over-flight with photographic documentation was conducted by the Civil Air Patrol (CAP) during the morning hours and was completed by 12:55. At 14:00, oil skimming operations commenced at the Southern Natural Gas pipeline easement located downstream of the underflow dam. A photographic log containing copies of the photographs taken by the CAP is located in Appendix B.

Active oil skimming on the tributary and stream, clearing of oil-soaked debris in the upland areas, and washing oil down to collection points continued from November 4 through November 6, 2006. Oil skimmers were removed and Booms 1, 2, and 3 were cut by 16:00 due to a significant increase in water flow resulting from heavy rains in the area. At 17:00, an unsuccessful attempt was made to deploy another contingency boom downstream of Boom 4 near the confluence of Perry Creek and the Yazoo River. According to USES, approximately 90% of total oil spilled was recovered prior to the rain event on November 6, 2006.

On November 7, 2006, START conducted an assessment of Perry Creek near the confluence of Perry Creek and the Yazoo River. No floating oil (free product) or sheen was observed at this location. USES began the process for redeployment of booms, staging of oil skimmers, and

continued oil removal work in the upland area.

On November 8, 2006, Booms 1 and 2 were deployed. Polishing and cleaning operations in the upland spill area continued throughout the day. Appendix B provides photographic details of the response from October 31 to November 8, 2006.

Conclusion

From October 31 to November 8, 2006, START provided emergency response personnel to the Perry Creek oil spill incident near Oil City, Mississippi. START contributions to the removal efforts involved documentation and technical support of removal activities, assisting the OSC with obtaining informational updates for Pollution Reports (PolReps), and submittal of the Clean Water Act (CWA) 311 package. From October 31 to November 6, 24-hour oil recovery operations were conducted by USES. A significant rain event occurred on November 6, which temporarily suspended active oil recovery operations in the stream and Perry Creek until the morning of November 8, 2006.

From November 8, 2006, onward, USES removal crews were moving into a water-polishing phase, which entails basic re-suspension of oil product into the main flow of water, the removal of debris and waste products that may be retaining oil product, and the controlled burning of all waste generated within the oil-impacted area. The main focus area for cleaning operations will be the upland area above the unnamed tributary as well as isolated areas where oil and oily debris are still present within the tributary and Perry Creek. An estimated 90% of the spilled oil had been removed from the oil-impacted area prior to the November 6 rain event. By November 8, approximately 400 barrels of oil had been collected from the oil-impacted area. Two booms (booms 1 and 2) were redeployed in Perry Creek on November 8 to facilitate collection of any residual amounts of oil remaining in the creek.

If you have any questions or comments regarding this Letter Report or require any additional information, please feel free to contact myself or Mr. Greg Kowalski, START Program Manager, at 678-355-5550 ext. 5704.

Sincerely,



S. Adam Davis, CHMM
TN&A START
In association with
Aerostar Environmental Services, Inc.
803 Government Street, Suite A
Mobile, AL 36602
Office: 251.432.2664
Fax: 251.432.2685
Cellular: 251.583.1647
Nextel Direct Connect: 186*111*609
Email: adavis@aerostar.net

CC: Katrina Jones, EPA Project Officer
Darryl Walker, Project Officer, USEPA (w/o enclosure)
Greg Kowalski, TN&A START Program Manager
TN&A START File

Enclosures

Figures



PERRY CREEK OIL SPILL
TDD No. TNA-05-001-0021
OIL CITY, YAZOO COUNTY,
MISSISSIPPI

FIGURE 1 - TOPOGRAPHIC MAP

TN & Associates, Inc.
EPA Region 4 START
In association with Shaw Environmental & Infrastructure and Aerostar Inc.

REFERENCE: YAZOO CITY, MS TOPOGRAPHIC MAP (1:100,000)
 PREPARED BY: USGS, 1984

Appendix A
Incident Action Plans
(transmitted as separate document)

Appendix B
Photographic Log



OFFICIAL PHOTOGRAPH No. 1
U.S. ENVIRONMENTAL PROTECTION AGENCY

Location: Perry Creek Oil Spill
Oil City, Yazoo County, Mississippi
TDD No.: TNA-05-001-0021
NRC Report No.: 816596

Subject: Leading Edge of Spill at boom 3, Day 1.

Date: October 31, 2006

Photographer: Dean Ullock

Source: T N & Associates – Superfund Technical Assessment and Response Team
Emergency Response, October 2006



OFFICIAL PHOTOGRAPH No. 2
U.S. ENVIRONMENTAL PROTECTION AGENCY

Location: Perry Creek Oil Spill
Oil City, Yazoo County, Mississippi
TDD No.: TNA-05-001-0021
NRC Report No.: 816596

Subject: Leading Edge of Spill at boom 3, Day 1.

Date: October 31, 2006

Photographer: Adam Davis

Source: T N & Associates – Superfund Technical Assessment and Response Team
Emergency Response, October 2006



OFFICIAL PHOTOGRAPH No. 3
U.S. ENVIRONMENTAL PROTECTION AGENCY

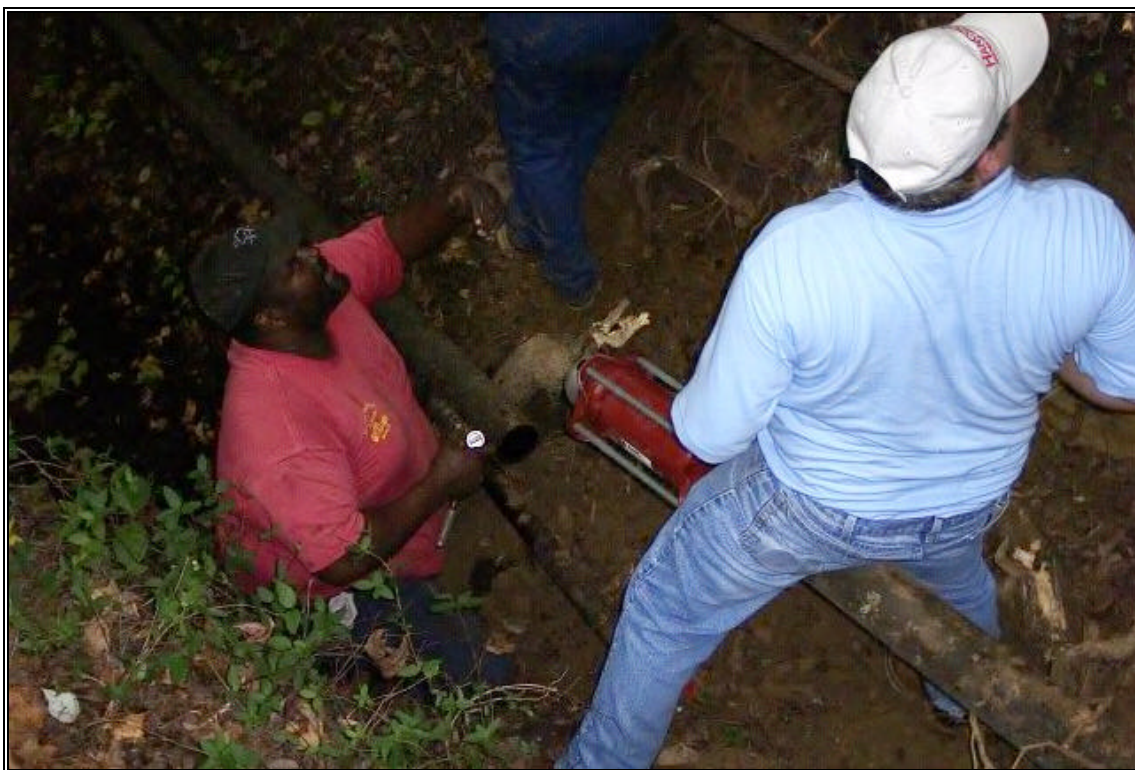
Location: Perry Creek Oil Spill
Oil City, Yazoo County, Mississippi
TDD No.: TNA-05-001-0021
NRC Report No.: 816596

Subject: Perry Creek looking downstream towards boom 1, Day 1.

Date: October 31, 2006

Photographer: Dean Ullock

Source: T N & Associates – Superfund Technical Assessment and Response Team
Emergency Response, October 2006



OFFICIAL PHOTOGRAPH No. 4
U.S. ENVIRONMENTAL PROTECTION AGENCY

Location: Perry Creek Oil Spill
Oil City, Yazoo County, Mississippi
TDD No.: TNA-05-001-0021
NRC Report No.: 816596

Subject: Point of Release (POR) repair, Day 1.

Date: October 31, 2006

Photographer: Dean Ullock

Source: T N & Associates – Superfund Technical Assessment and Response Team
Emergency Response, October 2006



OFFICIAL PHOTOGRAPH No. 5
U.S. ENVIRONMENTAL PROTECTION AGENCY

Location: Perry Creek Oil Spill
Oil City, Yazoo County, Mississippi
TDD No.: TNA-05-001-0021
NRC Report No.: 816596

Subject: Boom 1, Day 2.

Date: November 1, 2006

Photographer: Adam Davis

Source: T N & Associates – Superfund Technical Assessment and Response Team
Emergency Response, November 2006



OFFICIAL PHOTOGRAPH No. 6
U.S. ENVIRONMENTAL PROTECTION AGENCY

Location: Perry Creek Oil Spill
Oil City, Yazoo County, Mississippi
TDD No.: TNA-05-001-0021
NRC Report No.: 816596

Subject: Boom 3 (leading edge) facing upstream, Day 2.

Date: November 1, 2006

Photographer: Adam Davis

Source: T N & Associates – Superfund Technical Assessment and Response Team
Emergency Response, November 2006



OFFICIAL PHOTOGRAPH No. 7
U.S. ENVIRONMENTAL PROTECTION AGENCY

Location: Perry Creek Oil Spill
Oil City, Yazoo County, Mississippi
TDD No.: TNA-05-001-0021
NRC Report No.: 816596

Subject: Boom 1 (facing upstream), Day 2.

Date: November 1, 2006

Photographer: Adam Davis

Source: T N & Associates – Superfund Technical Assessment and Response Team
Emergency Response, November 2006



OFFICIAL PHOTOGRAPH No. 8
U.S. ENVIRONMENTAL PROTECTION AGENCY

Location: Perry Creek Oil Spill
Oil City, Yazoo County, Mississippi
TDD No.: TNA-05-001-0021
NRC Report No.: 816596

Subject: Morning Safety Meeting (Command Post), Day 3.

Date: November 2, 2006

Photographer: Adam Davis

Source: T N & Associates – Superfund Technical Assessment and Response Team
Emergency Response, November 2006



OFFICIAL PHOTOGRAPH No. 9
U.S. ENVIRONMENTAL PROTECTION AGENCY

Location: Perry Creek Oil Spill
Oil City, Yazoo County, Mississippi
TDD No.: TNA-05-001-0021
NRC Report No.: 816596

Subject: Boom 3, Day 3.

Date: November 2, 2006

Photographer: Adam Davis

Source: T N & Associates – Superfund Technical Assessment and Response Team
Emergency Response, November 2006



OFFICIAL PHOTOGRAPH No. 10
U.S. ENVIRONMENTAL PROTECTION AGENCY

Location: Perry Creek Oil Spill
Oil City, Yazoo County, Mississippi
TDD No.: TNA-05-001-0021
NRC Report No.: 816596

Subject: Boom 1, Day 3.

Date: November 2, 2006

Photographer: Adam Davis

Source: T N & Associates – Superfund Technical Assessment and Response Team
Emergency Response, November 2006



OFFICIAL PHOTOGRAPH No. 11
U.S. ENVIRONMENTAL PROTECTION AGENCY

Location: Perry Creek Oil Spill
Oil City, Yazoo County, Mississippi
TDD No.: TNA-05-001-0021
NRC Report No.: 816596

Subject: Downstream side of underflow dam (facing upstream), Day 3.

Date: November 3, 2006

Photographer: Adam Davis

Source: T N & Associates – Superfund Technical Assessment and Response Team
Emergency Response, November 2006



OFFICIAL PHOTOGRAPH No. 12
U.S. ENVIRONMENTAL PROTECTION AGENCY

Location: Perry Creek Oil Spill
Oil City, Yazoo County, Mississippi
TDD No.: TNA-05-001-0021
NRC Report No.: 816596

Subject: Oil skimmer on upstream side of underflow dam (facing upstream), Day 3.

Date: November 2, 2006

Photographer: Adam Davis

Source: T N & Associates – Superfund Technical Assessment and Response Team
Emergency Response, November 2006



OFFICIAL PHOTOGRAPH No. 13
U.S. ENVIRONMENTAL PROTECTION AGENCY

Location: Perry Creek Oil Spill
Oil City, Yazoo County, Mississippi
TDD No.: TNA-05-001-0021
NRC Report No.: 816596

Subject: Unnamed tributary upstream of underflow dam (facing downstream), Day 3.

Date: November 2, 2006

Photographer: Adam Davis

Source: T N & Associates – Superfund Technical Assessment and Response Team
Emergency Response, November 2006



OFFICIAL PHOTOGRAPH No. 14
U.S. ENVIRONMENTAL PROTECTION AGENCY

Location: Perry Creek Oil Spill
Oil City, Yazoo County, Mississippi
TDD No.: TNA-05-001-0021
NRC Report No.: 816596

Subject: Aerial photo of underflow dam, Day 4.

Date: November 3, 2006

Photographer: Civil Air Patrol

Source: Civil Air Patrol, November 2006



OFFICIAL PHOTOGRAPH No. 15
U.S. ENVIRONMENTAL PROTECTION AGENCY

Location: Perry Creek Oil Spill
Oil City, Yazoo County, Mississippi
TDD No.: TNA-05-001-0021
NRC Report No.: 816596

Subject: Aerial photo of boom 1, Day 4.

Date: November 3, 2006

Photographer: Civil Air Patrol

Source: Civil Air Patrol, November 2006



OFFICIAL PHOTOGRAPH No. 16
U.S. ENVIRONMENTAL PROTECTION AGENCY

Location: Perry Creek Oil Spill
Oil City, Yazoo County, Mississippi
TDD No.: TNA-05-001-0021
NRC Report No.: 816596

Subject: Aerial photo of boom 2, Day 4.

Date: November 3, 2006

Photographer: Civil Air Patrol

Source: Civil Air Patrol, November 2006



OFFICIAL PHOTOGRAPH No. 17
U.S. ENVIRONMENTAL PROTECTION AGENCY

Location: Perry Creek Oil Spill
Oil City, Yazoo County, Mississippi
TDD No.: TNA-05-001-0021
NRC Report No.: 816596

Subject: Aerial photo of boom 3 (facing upstream), Day 4.

Date: November 3, 2006

Photographer: Civil Air Patrol

Source: Civil Air Patrol, November 2006



OFFICIAL PHOTOGRAPH No. 18
U.S. ENVIRONMENTAL PROTECTION AGENCY

Location: Perry Creek Oil Spill
Oil City, Yazoo County, Mississippi
TDD No.: TNA-05-001-0021
NRC Report No.: 816596

Subject: Aerial photo of boom 3, Day 4.

Date: November 3, 2006

Photographer: Civil Air Patrol

Source: Civil Air Patrol, November 2006



OFFICIAL PHOTOGRAPH No. 19
U.S. ENVIRONMENTAL PROTECTION AGENCY

Location: Perry Creek Oil Spill
Oil City, Yazoo County, Mississippi
TDD No.: TNA-05-001-0021
NRC Report No.: 816596

Subject: Aerial photo of Perry Creek upstream of boom 1 and downstream of underflow dam, Day 4.

Date: November 3, 2006

Photographer: Civil Air Patrol

Source: Civil Air Patrol, November 2006



OFFICIAL PHOTOGRAPH No. 20
U.S. ENVIRONMENTAL PROTECTION AGENCY

Location: Perry Creek Oil Spill
Oil City, Yazoo County, Mississippi
TDD No.: TNA-05-001-0021
NRC Report No.: 816596

Subject: boom at Southern Natural Gas pipeline easement, Day 4.

Date: November 3, 2006

Photographer: Adam Davis

Source: T N & Associates – Superfund Technical Assessment and Response Team
Emergency Response, November 2006



OFFICIAL PHOTOGRAPH No. 21
U.S. ENVIRONMENTAL PROTECTION AGENCY

Location: Perry Creek Oil Spill
Oil City, Yazoo County, Mississippi
TDD No.: TNA-05-001-0021
NRC Report No.: 816596

Subject: Southern Natural Gas pipeline easement, Day 4.

Date: November 3, 2006

Photographer: Adam Davis

Source: T N & Associates – Superfund Technical Assessment and Response Team
Emergency Response, November 2006



OFFICIAL PHOTOGRAPH No. 22
U.S. ENVIRONMENTAL PROTECTION AGENCY

Location: Perry Creek Oil Spill
Oil City, Yazoo County, Mississippi
TDD No.: TNA-05-001-0021
NRC Report No.: 816596

Subject: USES crews clearing debris from unnamed tributary, Day 5.

Date: November 4, 2006

Photographer: Leo Ceron

Source: EPA Region 4, November 2006



OFFICIAL PHOTOGRAPH No. 23
U.S. ENVIRONMENTAL PROTECTION AGENCY

Location: Perry Creek Oil Spill
Oil City, Yazoo County, Mississippi
TDD No.: TNA-05-001-0021
NRC Report No.: 816596

Subject: Boom 1 beginning of rain event, Day 7.

Date: November 6, 2006

Photographer: Leo Ceron

Source: EPA Region 4, November 2006



OFFICIAL PHOTOGRAPH No. 24
U.S. ENVIRONMENTAL PROTECTION AGENCY

Location: Perry Creek Oil Spill
Oil City, Yazoo County, Mississippi
TDD No.: TNA-05-001-0021
NRC Report No.: 816596

Subject: Boom 1 cut during rain event, Day 7.

Date: November 6, 2006

Photographer: Leo Ceron

Source: EPA Region 4, November 2006



OFFICIAL PHOTOGRAPH No. 25
U.S. ENVIRONMENTAL PROTECTION AGENCY

Location: Perry Creek Oil Spill
Oil City, Yazoo County, Mississippi
TDD No.: TNA-05-001-0021
NRC Report No.: 816596

Subject: Perry Creek during rain event downstream of boom 3 (facing downstream), Day 7.

Date: November 6, 2006

Photographer: Adam Davis

Source: T N & Associates – Superfund Technical Assessment and Response Team
Emergency Response, November 2006



OFFICIAL PHOTOGRAPH No. 26
U.S. ENVIRONMENTAL PROTECTION AGENCY

Location: Perry Creek Oil Spill
Oil City, Yazoo County, Mississippi
TDD No.: TNA-05-001-0021
NRC Report No.: 816596

Subject: Boom 4 day of rain event, Day 7.

Date: November 6, 2006

Photographer: Adam Davis

Source: T N & Associates – Superfund Technical Assessment and Response Team
Emergency Response, November 2006



OFFICIAL PHOTOGRAPH No. 27
U.S. ENVIRONMENTAL PROTECTION AGENCY

Location: Perry Creek Oil Spill
Oil City, Yazoo County, Mississippi
TDD No.: TNA-05-001-0021
NRC Report No.: 816596

Subject: Boom 4 morning after rain event, Day 8.

Date: November 7, 2006

Photographer: Adam Davis

Source: T N & Associates – Superfund Technical Assessment and Response Team
Emergency Response, November 2006



OFFICIAL PHOTOGRAPH No. 28
U.S. ENVIRONMENTAL PROTECTION AGENCY

Location: Perry Creek Oil Spill
Oil City, Yazoo County, Mississippi
TDD No.: TNA-05-001-0021
NRC Report No.: 816596

Subject: Underflow dam-day after rain event (facing upstream), Day 8.

Date: November 7, 2006

Photographer: Adam Davis

Source: T N & Associates – Superfund Technical Assessment and Response Team
Emergency Response, November 2006



OFFICIAL PHOTOGRAPH No. 29
U.S. ENVIRONMENTAL PROTECTION AGENCY

Location: Perry Creek Oil Spill
Oil City, Yazoo County, Mississippi
TDD No.: TNA-05-001-0021
NRC Report No.: 816596

Subject: Southern Natural Gas easement downstream of underflow-day after rain event
(facing upstream), Day 8.

Date: November 7, 2006

Photographer: Adam Davis

Source: T N & Associates – Superfund Technical Assessment and Response Team
Emergency Response, November 2006



OFFICIAL PHOTOGRAPH No. 30
U.S. ENVIRONMENTAL PROTECTION AGENCY

Location: Perry Creek Oil Spill
Oil City, Yazoo County, Mississippi
TDD No.: TNA-05-001-0021
NRC Report No.: 816596

Subject: Boom 1-day after rain event, Day 8.

Date: November 7, 2006

Photographer: Adam Davis

Source: T N & Associates – Superfund Technical Assessment and Response Team
Emergency Response, November 2006



OFFICIAL PHOTOGRAPH No. 31
U.S. ENVIRONMENTAL PROTECTION AGENCY

Location: Perry Creek Oil Spill
Oil City, Yazoo County, Mississippi
TDD No.: TNA-05-001-0021
NRC Report No.: 816596

Subject: Redeployment of boom 1-2nd day after rain event, Day 9.

Date: November 8, 2006

Photographer: Adam Davis

Source: T N & Associates – Superfund Technical Assessment and Response Team
Emergency Response, November 2006