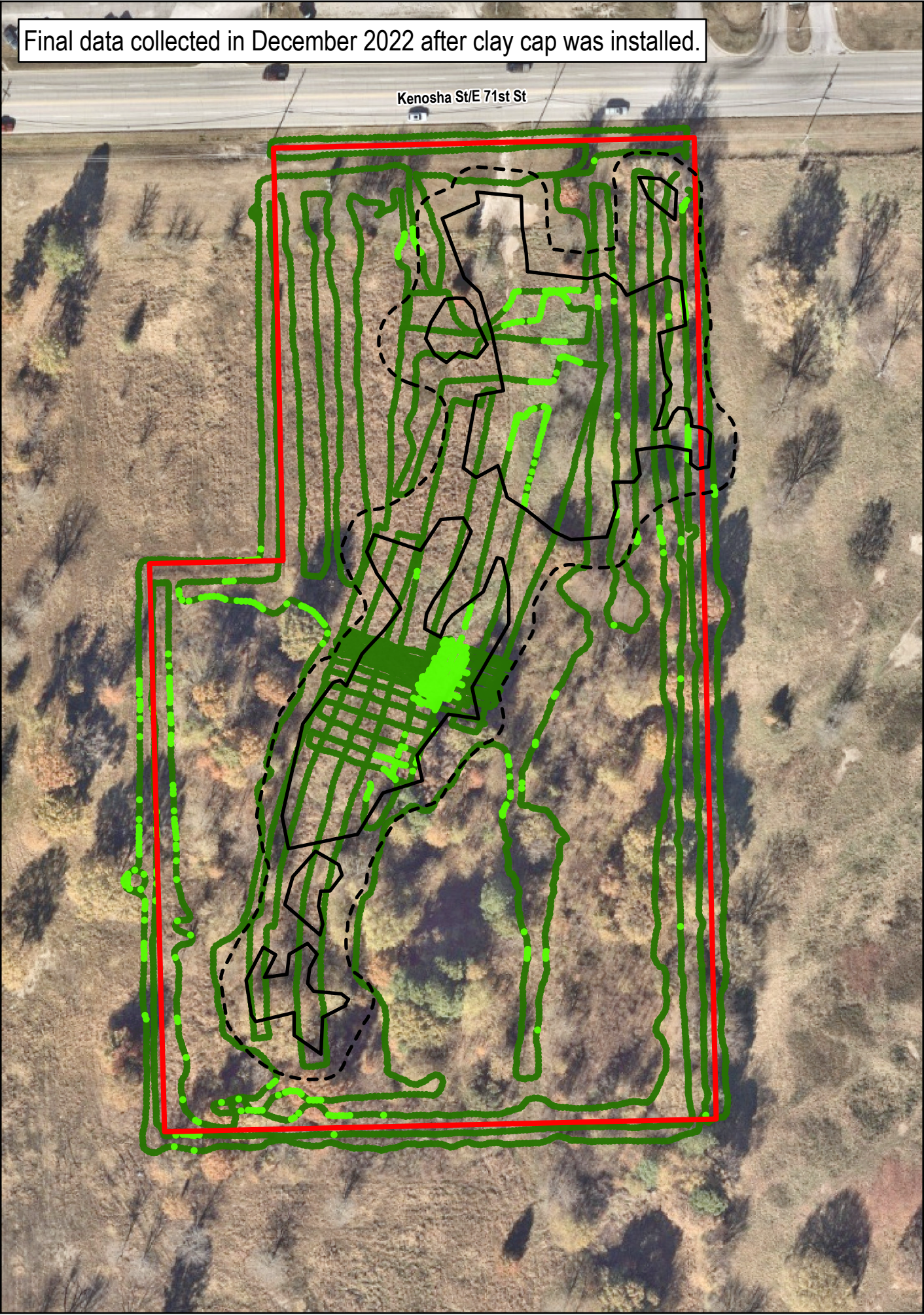


Data collected in December 2021.

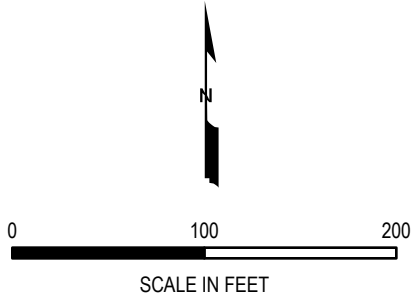


Final data collected in December 2022 after clay cap was installed.



- LEGEND**
- INITIAL REMOVAL AREA
 - INITIAL REMOVAL AREA 20-FT BUFFER (EXTENT OF CLAY CAP)
 - SITE BOUNDARY
- IN pCi/g OF RA-228 (PICOCURIES PER GRAM OF RADIUM-228)
- 0 - 2.0 (BTV)
 - 2.1 - 4.8 (RAL)
 - 4.9 - 14.4 (3 x RAL)
 - 14.5 - 19.2 (4 x RAL)
 - >19.2
- rds_145

RAL - Removal Action Level
BTV - Background Threshold Value
Removal Action Level is 4.8 pCi/g



SOURCE: ©NEARMAP IMAGERY, NOVEMBER 2021
TDD: 0001/22-432
SSID: 0600



**INITIAL AND FINAL
GAMMA SURVEY**
BROKEN ARROW LANDFILL SITE
KENOSHA STREET
BROKEN ARROW, WAGONER COUNTY, OKLAHOMA

DATE	PROJECT NO	SCALE
DECEMBER 2022	20600.012.001.1401	AS SHOWN