



LANCASHIRE STREET DISPOSAL AREA INFORMATION MEETING

PROVIDENCE, RHODE ISLAND

October 14, 2004

AGENDA

- Welcome and Introductions
- Objectives
- Site History/RIDEM's Work on the Site
- Residential Sampling Plan
- Removal Action for Spring 2005
- EPA's Superfund Program
- Next Steps
- Questions and Answers





OBJECTIVES

- To determine if contamination from fill materials are present in surface soils of private residences in the Lancashire Street neighborhood.
- To mitigate the direct contact threat from contamination found in surface soils on the three vacant lots.

SITE HISTORY



- 1939: Natural depression exists where Lancashire Street neighborhood is currently.
- 1955 to 1965: Filling of depression.
- 1986 to 1988: Residential community built.
- 1988: RIDEM alerted of possibility of PCB contaminated auto fluff existing in the area.

RIDEM: PREVIOUS WORK

SUSPECTED CONTAMINANTS

- Polychlorinated Biphenyls (PCBs)
 - A group of synthetic, toxic industrial chemical compounds which are chemically inert and not biodegradable.
 - Bind to soil particles and sediment.
 - No longer produced in the United States but still found in the environment.



SUSPECTED CONTAMINANTS

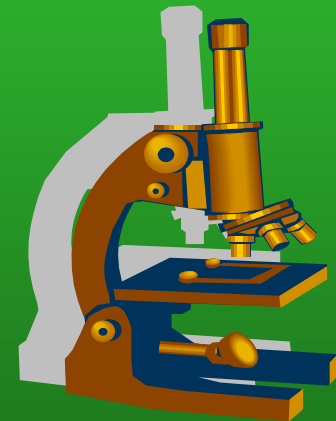
- Lead



- Naturally occurring bluish-gray metal found in small amounts in the earth's crust.
- Comes from human activities including burning fossil fuels, mining, and manufacturing.
- Released into the air, it may travel long distances before settling to the ground.
- Binds to soil particles.

RESIDENTIAL SAMPLING PLAN

- Collect Soil Samples
 - Surface, 0 to 6 inches deep
 - Depth, from 1 to 3 feet deep
- Analyze Soil Samples
 - PCBs
 - Lead
- Geographical Positioning System (GPS)
 - Latitude and Longitude



RESIDENTIAL SAMPLING PLAN

- Identify properties to be sampled in Round One.
- Request and obtain permission to access property.
- Contact homeowners to schedule sampling.
- Collect soil samples and analyze.
- Review results with individual homeowners.



RESIDENTIAL SAMPLING PLAN: General Information

- EPA On Scene Coordinator present on site.
- Sampling crew of 4 to 6 people.
- Hours:
 - Weekdays, 8am to 4:30pm.
 - No weekends anticipated at this time.



REMOVAL ACTION AT VACANT LOTS



- Sampling Event by EPA
 - Took place May 17 – 19, 2004.
 - Collect surface and depth soil samples.
 - Mobile Lab analyzed samples.
 - Analysis showed lead and PCB contamination on site in surface soils above the RIDEM standard for residential properties.

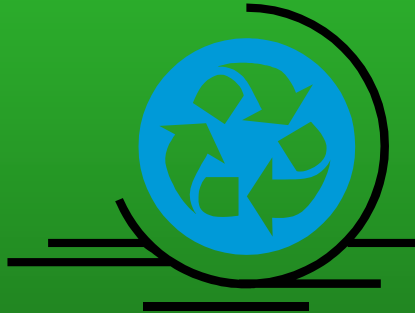


REMOVAL ACTIONS AT VACANT LOTS

- Excavate soil to create a level area.
- Remove old plastic cap from area.
- Bring in clean fill material.
- Assure proper drainage of water off site.
- Install new cap on the area.
- Spread loam and seed to assure growth of proper vegetation.

REMOVAL ACTION: A Superfund Clean Up

- Established in 1980 by an act of Congress authorizing funds for the cleanup of polluted sites.



- The fund is used to clean abandoned sites or sites where the responsible parties are not able to pay for cleanup.



A REMOVAL ACTION: Superfund Goals

- Protect human health and the environment by cleaning up polluted sites.
- Involve communities in the cleanup process.
- Make responsible parties pay the cleanup costs.
- Return previously-polluted land back to productive use.

NEXT STEPS

- Contact the property owners and tenants of the properties to be sampled.
- Request and obtain access to the properties.
- Create a sampling schedule.
- Begin sampling.



COMMUNITY INVOLVEMENT

- Periodic Flyers and Newsletters
- Press Releases
- Community Site Update Meetings
- Individual Meetings with Homeowners
- Toll Free EPA Number: 1-888-372-7341



FEDERAL AND STATE CONTACTS

- EPA
 - Mia Pasquerella On Scene Coordinator
 - Angela Bonarrigo Community Relations
- RIDEM
 - Joan Taylor
- ATSDR
 - Katherine Robbins



QUESTIONS?