

Technical Memorandum

November 27, 2023

To	CSX Transportation	Tel	
Prepared By	GHD	Email	
Reviewed By	GHD, CSX Transportation	Ref. No.	12628999
Approved By	CSX Transportation	Distributed By	CSX Transportation
Subject	Memo 7 – Summary of Real-Time Air Monitoring Results November 26, 2023, 00:00 to 23:59 Eastern Time Livingston, Kentucky – Train Derailment		

The purpose of this memorandum is to provide CSX Transportation (CSXT) with a summary of the real-time air monitoring activities, results, and observations from real-time air monitoring being performed at the location of a train derailment, and subsequent fire near the town of Livingston, Kentucky at approximate Mile Post (MP) 138.2 on the Cincinnati Corbin (CC) subdivision (Site). The derailment occurred on November 22, 2023, and involved approximately sixteen (16) mixed freight rail cars containing various commodities including multiple tank cars containing molten sulfur.

This memorandum summarizes the real-time air monitoring data collected between 00:00 and 23:59 Eastern Time (ET) on November 26, 2023 (monitoring period). GHD collected remotely monitored real-time air monitoring data from stationary locations around the perimeter of the Site and within the surrounding community. GHD mobile industrial hygiene (IH) professionals also manually recorded real-time air monitoring data using hand-held instruments throughout the work areas, Site perimeter, and within the surrounding community.

Real-time air monitoring was used primarily as a screening tool to quickly indicate the presence of elevated airborne concentrations of Site-specific constituents of interest (COI) associated with molten sulfur: flammability as a percentage of the lower explosive limit (%LEL), hydrogen sulfide, sulfur dioxide; and Site specific COIs associated with methanol: %LEL, and methanol; in addition to COIs related to the subsequent fire: respirable particulate matter with a diameter of 2.5 microns or less (PM_{2.5}) and total particulate matter with a diameter of 10 microns or less (PM₁₀). Oxygen was monitored in conjunction with flammability. Oxygen rich or deficient environments may shift the LEL or upper explosive limit (UEL) and cause erroneous readings for flammable gases.

The COIs were adjusted as required based on Site conditions/observations, and monitoring results. GHD and the stakeholders (CSX, USEPA, KYDEP) used an adaptive management approach to review and assess the air monitoring data following each operational period and carry forward lines of evidence that are useful in achieving AMP objectives while eliminating lines of evidence that have limited value.

- **Effective November 26, 2023 at 09:37 ET:** COIs (PM_{2.5}, PM₁₀, and NO₂) air monitoring activities related to potential fires were discontinued at the completion of the source area excavation activities.
- **Effective November 26, 2023 at 15:37 ET:** Methanol air monitoring activities related to tank car NATX 303953 were discontinued following the completion of the tank car cleaning and purging.

Real-time air monitoring activities and strategies were performed in accordance with the Site-specific Air Monitoring Plan (AMP), developed by GHD, reviewed by a certified industrial hygienist (CIH), and provided to CSXT on November 22, 2023. An amendment to the AMP (AMP – Version 2) was provided to CSX on

November 23, 2023. AMP – Version 2 provides air analytical sampling procedures for hydrogen sulfide, and sulfur dioxide and includes Acute Exposure Guideline Levels (AEGL), protective action criteria (PAC), and National Ambient Air Quality Standards (NAAQS) standards and guidelines for community air monitoring for sulfur dioxide. A second amendment including standards, guidelines, and monitoring tactics for methanol based on a revised list of Site-specific COI was provided to CSXT on November 25, 2023 (AMP – Version 3).

Evaluation of readings relative to established action levels were based on an approximate 1-minute average of concentrations measured by the air monitoring instruments. When readings of a COI were sustained at a concentration at, or above, the action level for the appropriate time period (generally one minute), they were considered an exceedance. Conversely, instantaneous readings that dispersed quickly and were not sustained for over one minute represent transient concentrations and are not representative of ambient conditions over a sustained duration.

GHD identified the following Site activities with potential exposures to the Site-specific COI during the monitoring period:

- Tank car inspection, and assessment activities
- Tank car cleaning and purging activities
- Ground disturbance activities

The remotely monitored and manually collected real-time air monitoring data and tactics are summarized below.

Remotely Monitored Real-Time Air Monitoring System

GHD has established a real-time remotely monitored air monitoring system to measure ambient air at locations with potential airborne exposures to the Site-specific COI. GHD deployed instruments **Honeywell AreaRAE monitors (AreaRAE)** equipped with a catalytic bead sensor specific for measuring %LEL, and electrochemical sensors specific for hydrogen sulfide, sulfur dioxide, and oxygen.

Each remotely monitored real-time air monitoring instrument was deployed approximately 4.5 feet above the ground to represent the air quality within the typical breathing zone of personnel in the area. AreaRAE units continuously monitor airborne concentrations of COI and using radio telemetry transmit instantaneous readings (approximately every 20-60 seconds) to a host computer for simultaneous monitoring from a central location.

During the monitoring period, GHD maintained seven (7) stationary air monitoring locations, the locations of the stationary meters are described below:

- **Location 1: AreaRAE 02225** – Church
 - This location was discontinued at 20:02 ET on November 26, 2023.
- **Location 2: AreaRAE 02056** – Rail Car Staging
- **Location 3: AreaRAE 01871** – Rolloff Staging Area
 - This location was discontinued at 20:25 ET on November 26, 2023.
- **Location 4: AreaRAE 02103** – Residential Property
- **Location 5: AreaRAE 01234** – Rail Car Staging 2
 - This location was discontinued at 21:08 ET on November 26, 2023.
- **Location 6: AreaRAE 01871** – Rail Car Staging Area (North)
 - This Location was launched at 20:53 ET on November 26, 2023.
- **Location 7: AreaRAE 01234** – Rail Car Staging Perimeter (South)
 - This location was launched at 21:09 ET on November 26, 2023.

Remotely monitored real-time air monitoring locations are shown on Figure 1. During this monitoring period, the remotely monitored air monitoring system recorded 87,429 real-time air monitoring readings for sulfur

dioxide, %LEL, hydrogen sulfide, and oxygen. The details of each location, monitoring period, and a summary of the remotely logged monitoring data are summarized in Table 1.

Table 1 *Remotely Monitored Real-Time Air Monitoring Data Summary*

Location / Meter ID	Total Number of Readings ¹	COI Number of Readings Above Action Level (Action Levels) ²			
		SO ₂ (≥0.2 ppm)	% LEL (≥1%)	H ₂ S (≥0.5 ppm)	%Oxygen (≤19.5 or ≥ 23.5%)
Location 1: AreaRAE 02225 – Church <i>Discontinued at 20:02 ET</i>	9,875	0	0	0	0
Location 2: AreaRAE 02056 – Rail Car Staging	19,867	0	0	0	0
Location 3: AreaRAE 01871 – Rolloff Staging Area <i>Location discontinued at 20:25 ET</i>	17,259	0	0	0	0
Location 4: AreaRAE 02103 – Residential Property	19,493	0	0	0	0
Location 5: AreaRAE 01234 – Rail Car Staging 2 <i>Location discontinued at 21:08 ET</i>	17,303	0	0	0	0
Location 6: AreaRAE 01871 – Rail Car Staging Perimeter (North) <i>Location launched at 20:52 ET</i>	1,787	0	0	0	0
Location 7: AreaRAE 01234 – Rail Car Staging Perimeter (South) <i>Location launched at 21:09 ET</i>	1,845	0	0	0	0
Definitions: COI – Constituent of interest SO ₂ – Sulfur dioxide LEL – Lower explosive limit H ₂ S – Hydrogen sulfide ppm – Parts per million % – percent ≥ – greater than or equal ≤ – less than or equal ET – Eastern time					
Notes: 1. AreaRAE units continuously monitor airborne concentrations of COI and transmit instantaneous readings (approximately every 20-60 seconds) to a computer for simultaneous monitoring using radio telemetry. 2. The evaluation of airborne concentrations relative to the established action levels for the associated COI were based on the approximate one-minute average. As such, the number of readings displayed may have represented transient concentrations but may not represent a one-minute action level exceedance.					

Manually Collected Real-Time Air Monitoring Data

A GHD mobile team manually collected real-time air monitoring data at the perimeter of the work areas, inside the work zones, and surrounding community. The manually collected real-time air monitoring data was collected at breathing zone height (approximately 4.5 feet) using handheld instruments. The data collected from these handheld devices was logged into an electronic handheld data collection device. The purpose of the manually logged data was to characterize exposures in real-time during the various operations throughout the Site, as well as identify any potential fugitive emissions related to mitigation activities.

GHD used the following handheld instruments to measure airborne concentrations:

- **Honeywell MultiRAE instruments** equipped with a catalytic bead sensor specific for %LEL, and electrochemical sensors specific for sulfur dioxide, hydrogen sulfide, and oxygen.
- **Honeywell MiniRAE 3000 instruments** equipped with a photoionization detector (PID) 11.7 eV lamp for monitoring of methanol (as total VOCs).

- **Gastec methanol** colorimetric detection tubes.
- **TSI DustTrak DRX (DustTrak)** aerosol monitors equipped with a light-scattering laser photometer to detect particulate matter.

GHD mobile teams logged over 370 real-time air monitoring readings during the monitoring period. The manually collected real-time air monitoring data locations are shown on Figure 1. A summary of the manually logged data for the monitoring period is provided below in Table 2.

Table 2 *Manually Logged Real-Time Air Monitoring Data*

COI	Action Level ¹	Reading Type	Result
Hydrogen Sulfide	≥0.5 ppm	Number of Readings	370
		Number of Readings Above Action Level	0
		Maximum Reading	<0.1 ppm
Sulfur Dioxide	≥0.2 ppm	Number of Readings	369
		Number of Readings Above Action Level	0
		Maximum Reading	<0.1 ppm
Respirable Particulate Matter (as PM _{2.5})	≥2.5 mg/m ³	Number of Readings	128
		Number of Readings Above Action Level	0
		Maximum Reading	0.866
Respirable Particulate Matter (as PM ₁₀)	≥5 mg/m ³	Number of Readings	128
		Number of Readings Above Action Level	0
		Maximum Reading	1.840
%LEL	≥1% LEL	Number of Readings	370
		Number of Readings Above Action Level	0
		Maximum Reading	<1 %
Oxygen	≤19.5% or ≥23.5%	Number of Readings	371
		Number of Readings Above Action Level	0
Methanol	≥100 ppm	Number of Readings	28
		Number of Readings Above Action Level	0
		Maximum Reading	<0.1 ppm

Definitions:

COI – Constituent of interest

LEL – Lower explosive limit

ppm – Parts per million

% – percent

mg/m³ – milligrams per cubic meter

≥ – greater than or equal

≤ – less than or equal

PM 2.5 – Particulate matter 2.5 microns in diameter or less

PM 10 – Particulate matter 10 microns in diameter or less

Notes:

1. The evaluation of airborne concentrations relative to the established action levels for the associated COI were based on the approximate one-minute average.

Real-Time Air Monitoring Data Evaluation and Summary of Results

The **remotely monitored** real-time air monitoring data for the monitoring period indicated the following:

- **Hydrogen Sulfide (Action Level 0.5 ppm)**
 - No hydrogen sulfide readings were documented above the action level.
- **Sulfur Dioxide (Action Level of 0.2 ppm)**
 - No sulfur dioxide readings were documented above the action level.
- **%LEL (Action Level of 1% LEL)**
 - No %LEL readings were documented above the action level.

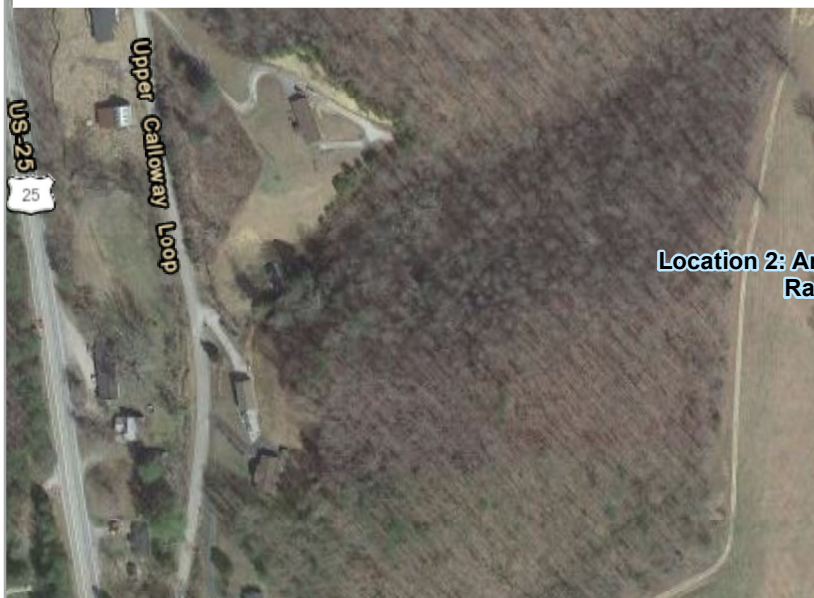
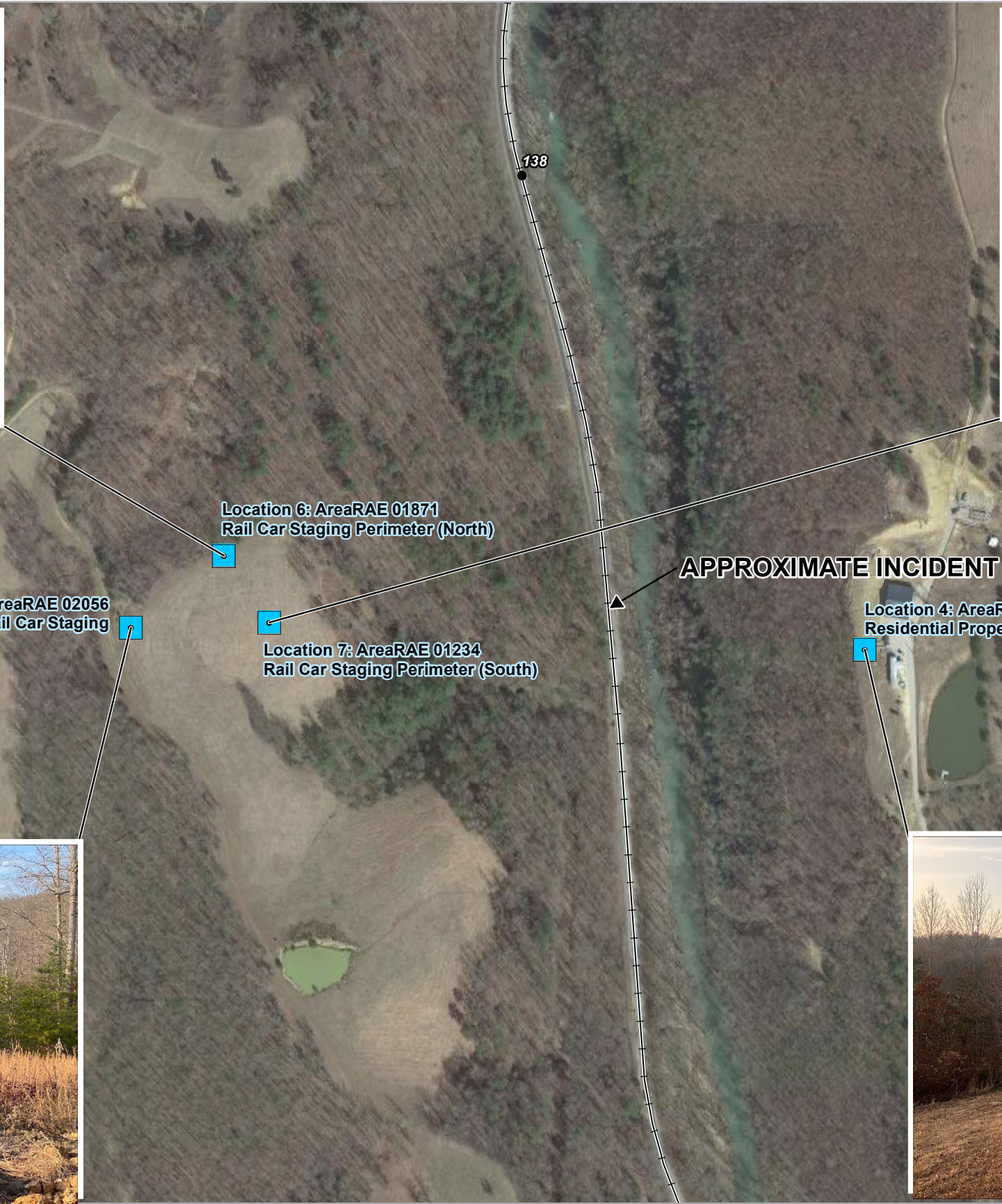
- **Oxygen (Normal Range 19.5-23.5%)**
 - No oxygen readings were documented outside the normal range.

The **manually collected** real-time air monitoring data for the monitoring period indicated the following:

- **Hydrogen Sulfide (Action Level 0.5 ppm)**
 - No hydrogen sulfide readings were documented above the action level.
- **Sulfur Dioxide (Action Level of 0.2 ppm)**
 - No oxygen readings were documented above the action level.
- **Respirable Particulate Matter - as PM_{2.5} (Action Level 2.5 mg/m³)**
 - No PM 2.5 readings were documented above the action level.
- **Respirable Particulate Matter - as PM₁₀ (Action Level 5 mg/m³)**
 - No PM 10 readings were documented above the action level.
- **%LEL (Action Level of 1% LEL)**
 - No %LEL readings were documented above the action level.
- **Oxygen (Normal Range 19.5-23.5%)**
 - No oxygen readings were documented outside the normal range.
- **Methanol (Action Level 100 ppm)**
 - No methanol readings were documented above the action level.

Quality Assurance and Quality Control

The information contained in this memorandum will be considered preliminary, as a final Quality Assurance / Quality Control (QA/QC) of the data has not been completed. At the completion of the project, a report will be prepared in which the data collected through real-time air monitoring will be compiled, summarized, and reported to CSXT. Data contained in the final report will have been through the final QA/QC process, will be reviewed by a GHD Certified Industrial Hygienist (CIH), and will be considered final.



Legend

- Stationary Monitoring Location (4)
- Mile Post
- Track Centerline

Paper Size ANSI B

0 200 400 600

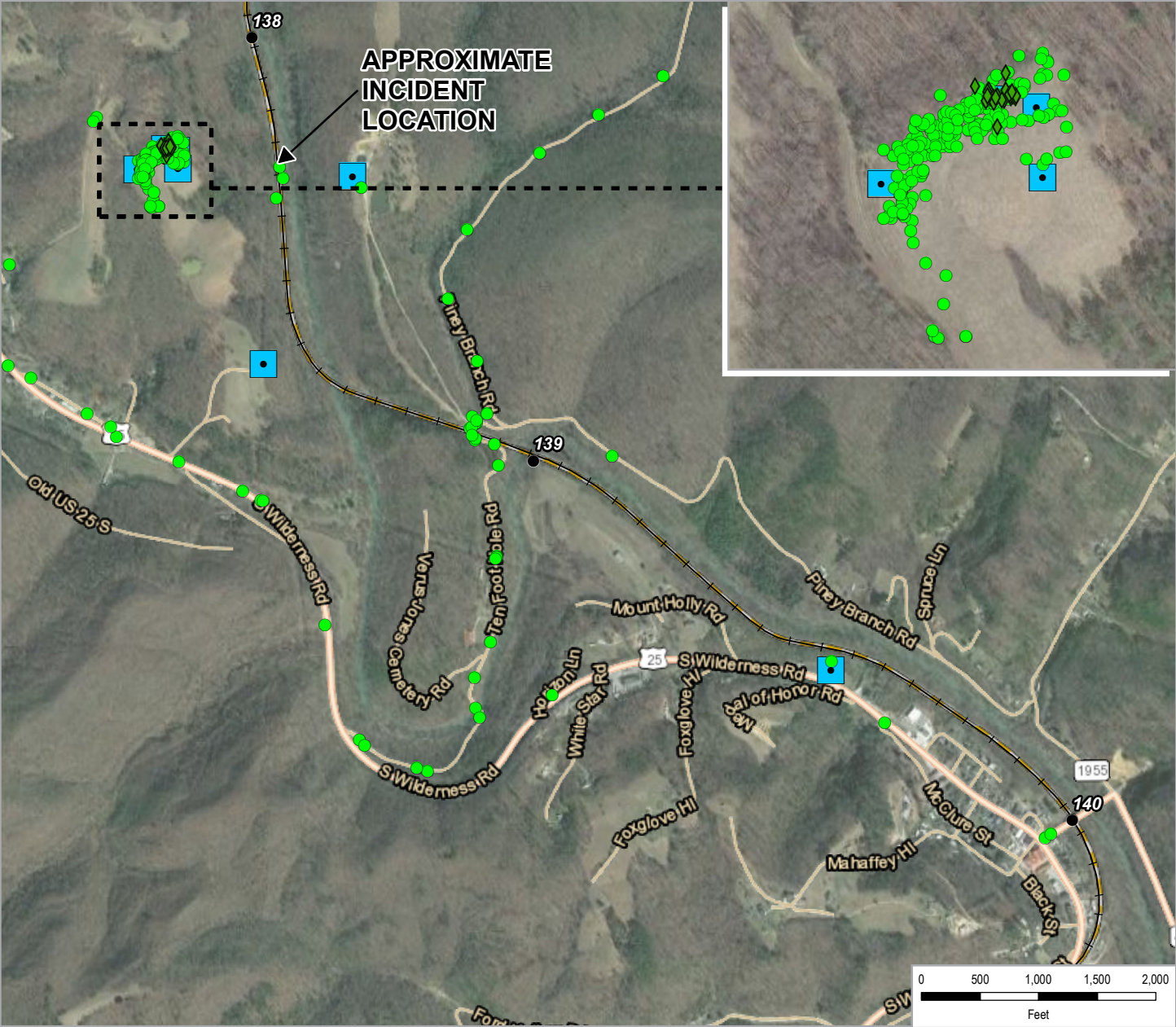
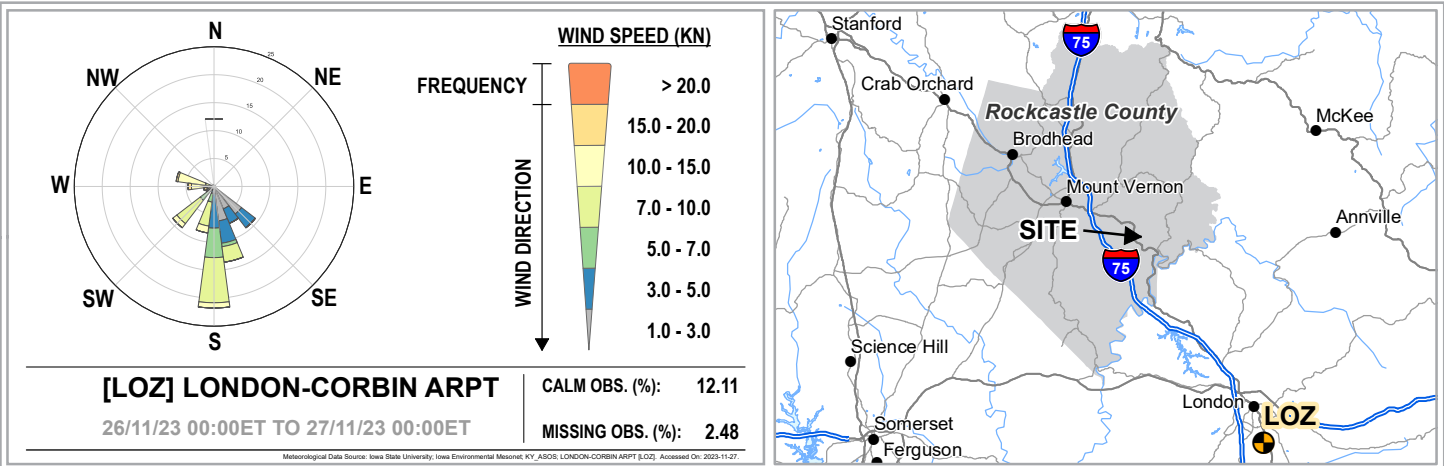
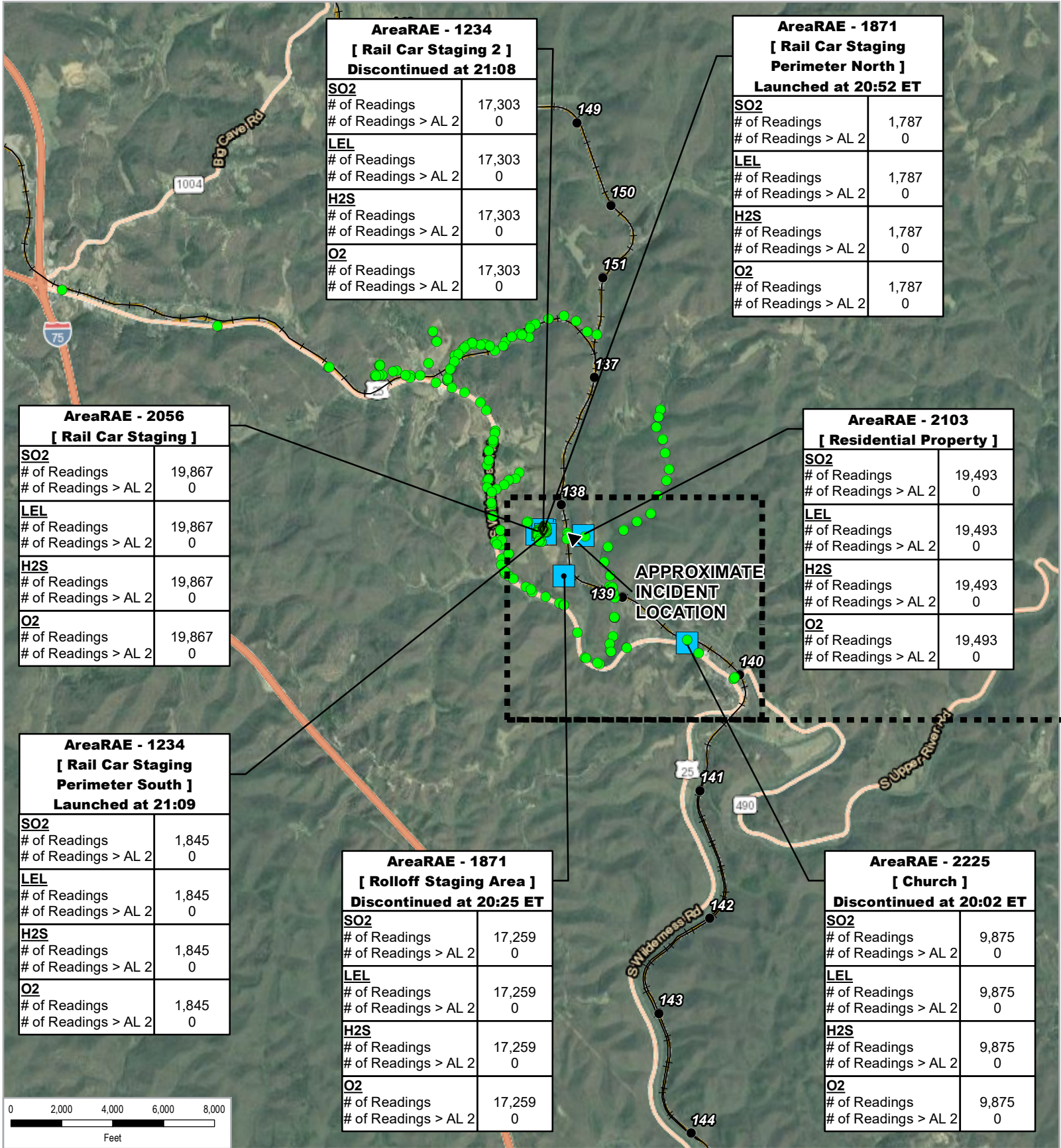
Feet

Map Projection: Lambert Conformal Conic
Horizontal Datum: North American 1983
Grid: NAD 1983 StatePlane Kentucky South FIPS 1602 Feet

CSXT FIRE
CINCINNATI CORBIN SUB - MP 138.2
LIVINGSTON, KENTUCKY

2023/11/26 - 21:00 (ET)
AREARAE DEPLOYMENT LOCATIONS

Project No. 12628999
Date Nov 27, 2023



Legend

- Real Time Air Monitoring Location (Above Action Level) (0)
- Real Time Air Monitoring Location (Below Action Level) (372)
- Stationary Monitoring Location (7)
- Real Time Methanol Monitoring Location (Above Action Level) (0)
- Real Time Methanol Monitoring Location (Below Action Level) (28)
- Weather Station (LOZ)
- Mile Post
- Track Centerline

NOTES:

- > AL = Above Action Level 2
- Action Level for Hydrogen Sulfide is ≥ 0.5 ppm
- Action Level for Sulfur Dioxide is ≥ 0.2 ppm
- Action Level for Methanol is ≥ 100.0 ppm
- Action Level for LEL is ≥ 1.0 %
- Action Level for PM2.5 is ≥ 2.5 mg/m3
- Action Level for PM10 is ≥ 5.0 mg/m3
- Action Level for Oxygen is ≤ 19.5 % or ≥ 23.5 %

Paper Size ANSI B

Map Projection: Lambert Conformal Conic

Horizontal Datum: North American 1983

Grid: NAD 1983 StatePlane Kentucky South FIPS 1602 Feet

CSXT FIRE

CINCINNATI CORBIN SUB - MP 138.2

LIVINGSTON, KENTUCKY

2023/11/26 - 00:00 TO

2023/11/26 - 23:59 (ET)

AIR MONITORING RESULTS SUMMARY

Project No. 12628999

Date Nov 27, 2023

GHD

Source: Imagery © Google, Esri, HERE, Garmin, (c) OpenStreetMap contributors

Meteorological Data Source: Iowa State University, Iowa Environmental Mesonet, ASOS Network, North Dakota ASOS, GAF Grafton, Hutson Field Airport.

Q:\GIS\PROJECTS\12628999\GIS\Map\Deliverables\AirMonitoring\12628999_GIS007_AirMonitoring_20231126-0000to20231126-2359.mxd

Print date: 27 Nov 2023 - 18:27