

Historic Potteries Site Public Meeting

February 21, 2024, 6:30PM

Jon Byk

byk.jonathan@epa.gov

347-899-6210

Joel Petty

petty.joel@epa.gov

212-637-4399

Agenda

- Introductions
- About EPA's Superfund Program
- EPA Initial Involvement in East Trenton – L.H. Mitchell Site
- Historic Potteries Site Background & History
- Current Activities including Grant Intermediate Sampling
- Exposure Pathway & Risk
- Next Steps
- Questions & Answers

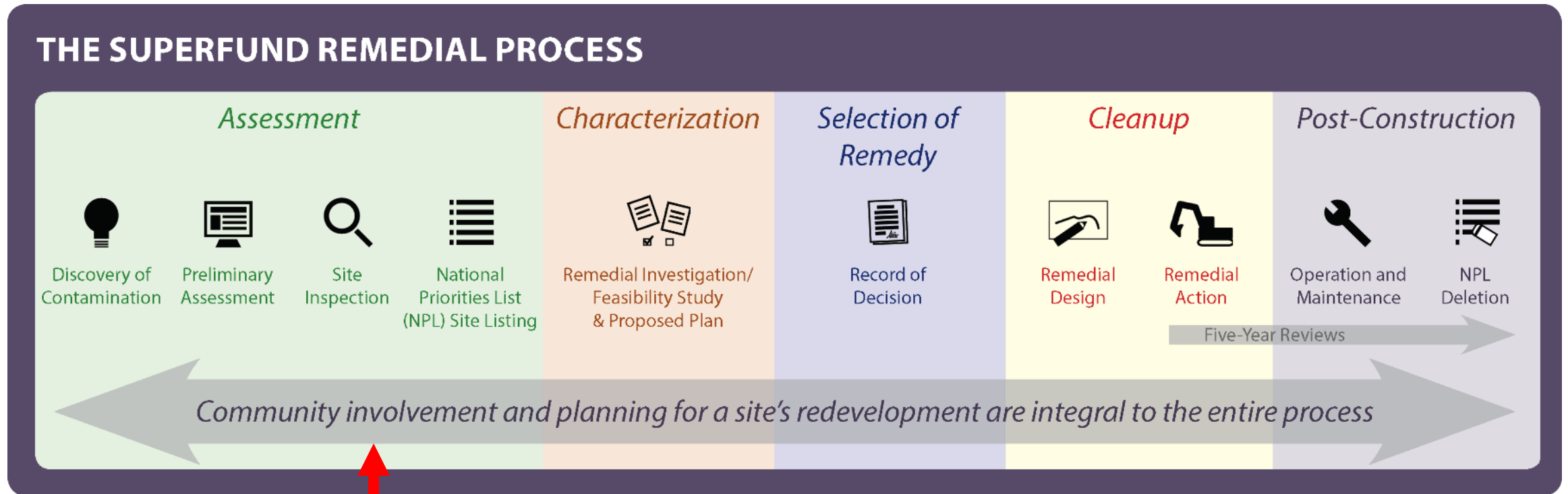
What is Superfund?

- Congress established the Comprehensive Environmental Response, Compensation and Liability Act (CERCLA) in 1980
- CERCLA is sometimes informally referred to as "Superfund"
- EPA's Superfund program is responsible for cleaning up some of the nation's most contaminated sites and responding to environmental emergencies and natural disasters

Superfund Removal and Remedial Programs

- Superfund has two sub-programs that study and address polluted sites:
 - **Removal Program:** for short-term responses to mitigate the most immediate threats to people's health or the environment
 - **Remedial Program:** for complex sites needing long-term response that are placed on the National Priorities List (NPL)
- For sites in the remedial program, EPA often employs the removal program to take immediate action
 - Removal actions can last days to several years while remedial actions often involve years of study and cleanup work to achieve full cleanup

Superfund Remedial Process



Current status of Historic Potteries Site

NOTE: **removal actions** can occur at any time and simultaneously.

Initial EPA Soil Investigation at L.H. Mitchell Site

2018: L.H. Mitchell lead solder facility was referred to EPA by NJDEP for assessment

2018 & 2019: EPA investigation of historic lead contamination in soil surrounding L.H. Mitchell

All sampled residential properties besides background locations contained lead at the surface (0-2 in.) ≥ 200 parts per million (ppm)

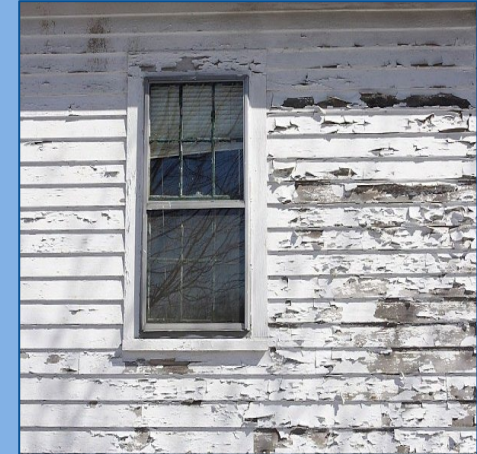
L.H. Mitchell site was ineligible for a removal action due to the elevated levels of lead being unattributable to the facility

Historic Sources of Lead in Soil

Automobile Emissions



Lead-Based Paint



Fill



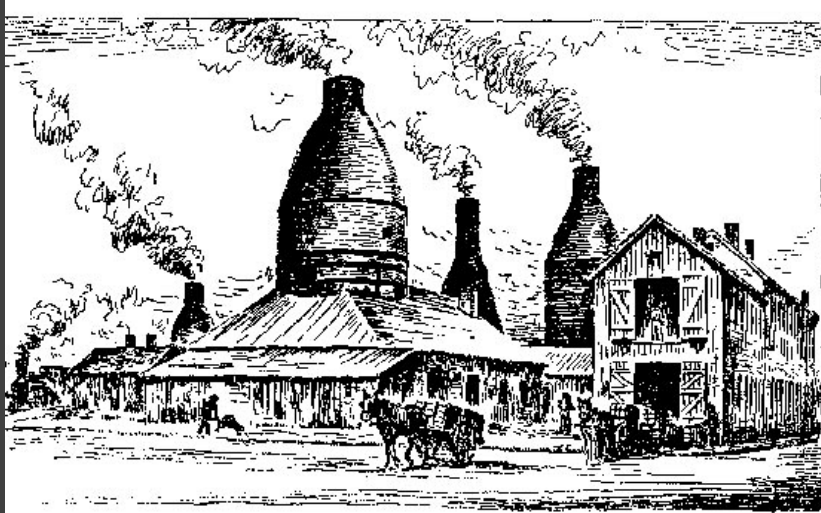
Industrial Emissions



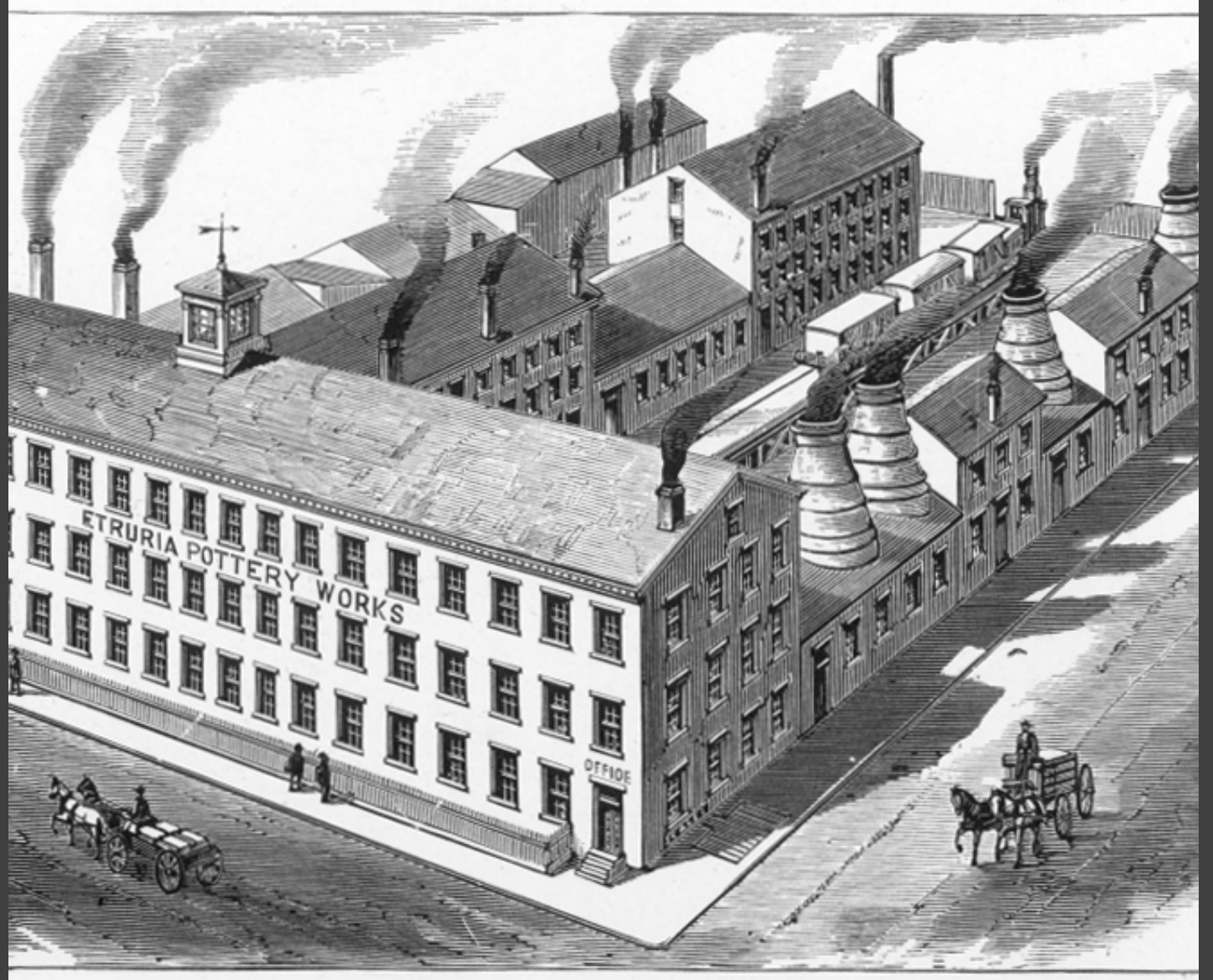


Historic Potteries Industry

- **Ceramics Manufacturing – historically, predominant industry in East Trenton**
 - About 80 locations throughout the city identified from historic maps, about ½ large scale-operations
 - Over 30 locations identified in East Trenton/Top Road that may have impacted residential properties
- From 1850s grew steadily until its peak in the 1920s; began decline afterwards



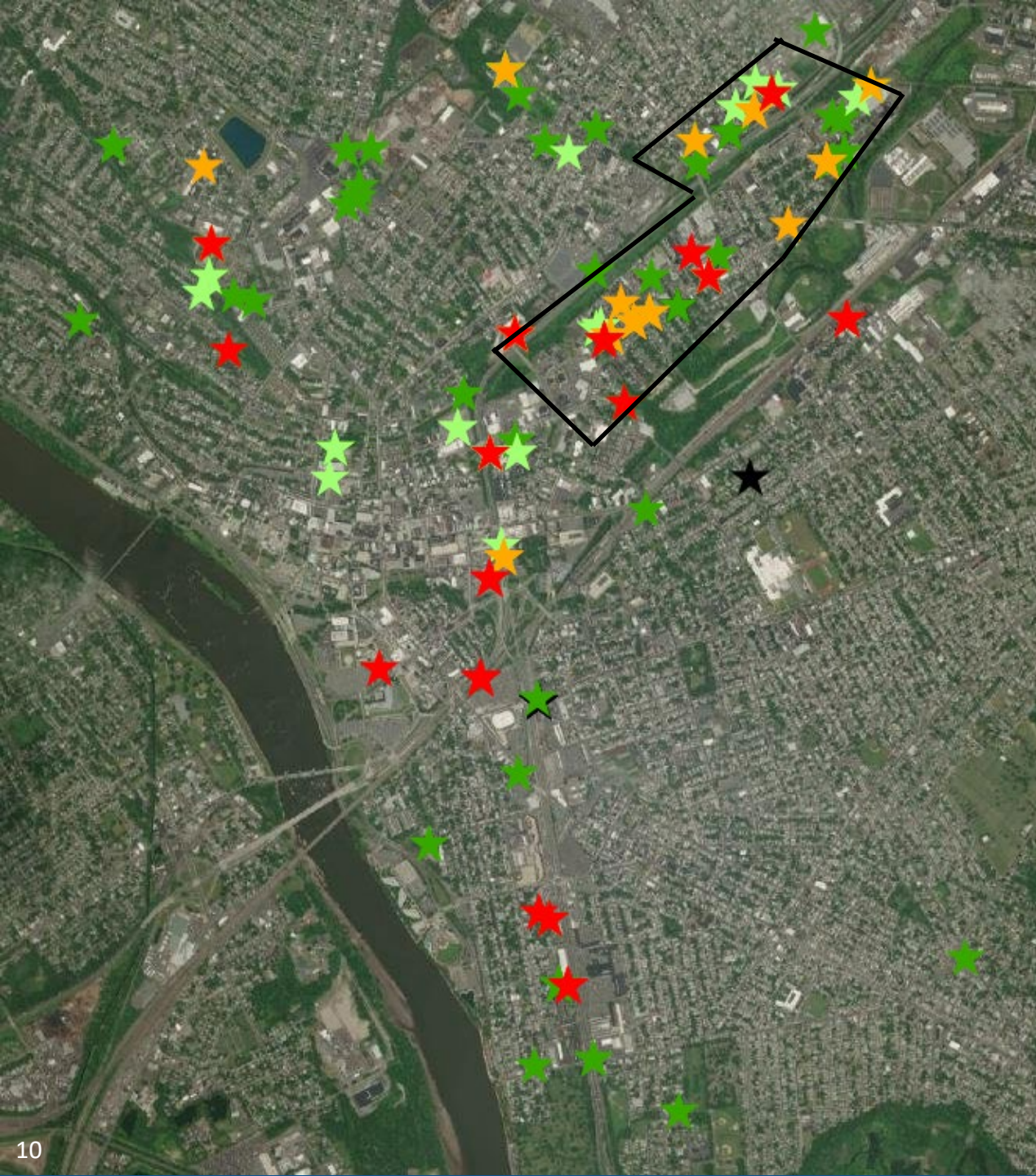
TAYLOR AND SPEELER'S POTTERY, CIRCA 1852



Identified Pottery Locations

≈30 Pottery Locations Identified in East Trenton & Top Road Neighborhoods

≈80 Pottery Locations Identified throughout Trenton



Historic Potteries Site Attribution Study

NJDEP referral in January 2020, study conducted from 2020 - 2023

Ceramic materials from these potteries found in residential soils at varying frequencies

Found relationship between soil and ceramic chips from potteries and residential properties

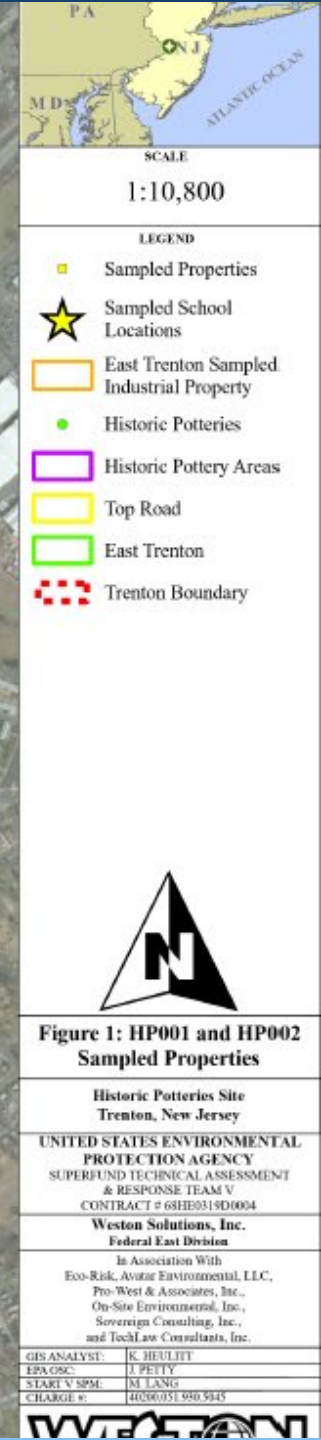
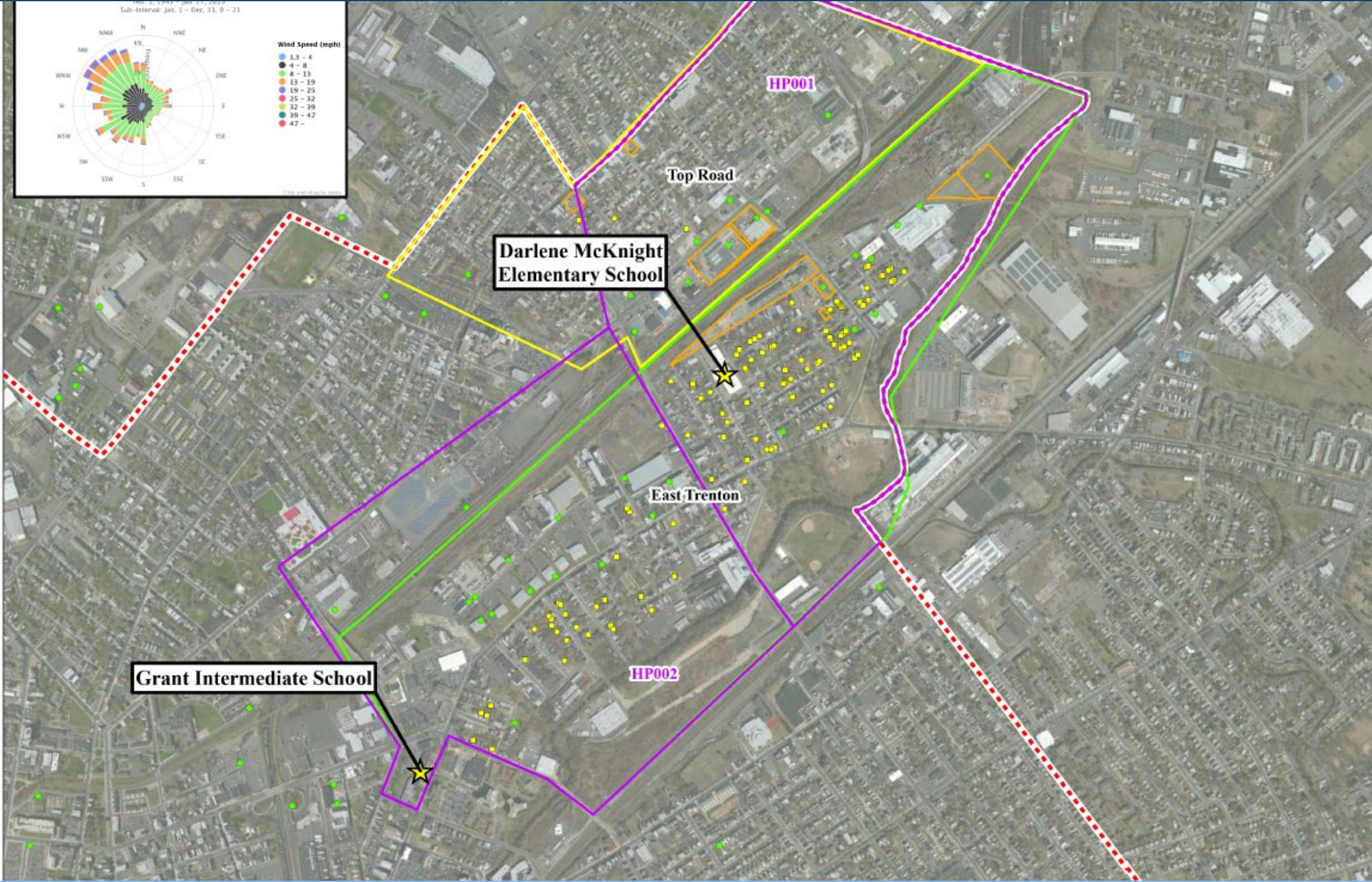
Non-CERCLA sources ruled out as the main sources of lead

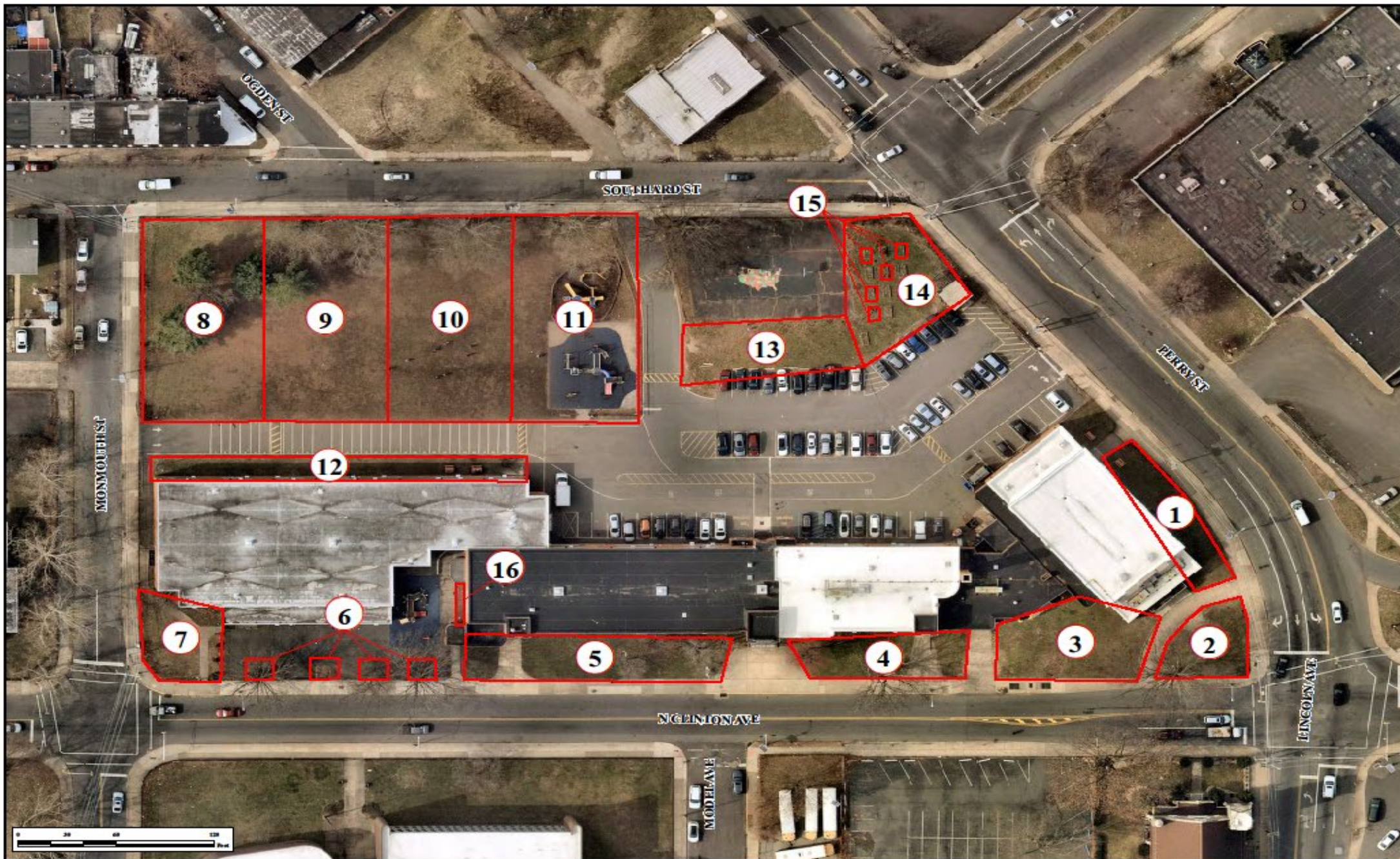
Pottery fill and airborne releases from the kilns significantly contributed to the lead contamination

Current Activities

- **Outreach and Public Education**
 - Over 900 homes in East Trenton
- **Soil Sampling**
 - 100+ homes sampled
 - Two schools
 - Three parks
- **Removal Action Preparation**
 - Prepare resident results letters
 - Interim actions at high-risk properties
- **Community Meetings**
 - School faculty meeting held on 2/2
 - Availability session held on 2/9
 - Community meeting at Grant Intermediate today
 - Board of Education meeting 2/26/24 at 5:30 PM







SCALE
1:720

LEGEND
Assessment Quad

Sources:
Newsmap, www.newsmap.com, Imagery Date: 2/2/23



FIGURE 1: GRANT INTERMEDIATE SCHOOL AERIAL PLAN

Historic Potteries
Trenton, New Jersey

UNITED STATES ENVIRONMENTAL
PROTECTION AGENCY
SUPERFUND TECHNICAL ASSESSMENT
& RESPONSE TEAM V
CONTRACT # 6818001150004

Weston Solutions, Inc.

In Association With
Eco-Risk, Avaster Environmental, LLC,
Pro-West & Associates, Inc.,
On-Site Environmental, Inc.,
Sovereign Consulting, Inc.

CREATED BY	K. BELLETTY
DATE	11/17/2024
REVISION	0
DATE MODIFIED	11/17/2024



Grant School Results

- **Soil samples collected from 16 areas or “quadrants”**
- **Lead concentrations highest within top 6”**
 - Average lead concentration in the top 2 inches of soil property wide is **312 ppm**
 - Average lead concentration in the top 2 inches of soil in the play areas is **224 ppm**
 - Average lead concentration in the garden beds is **92 ppm**
- The **RML** is a screening number used to help prioritize and define areas that may be eligible for a removal action

EPA Removal Management Level (RML) for lead = 200ppm

Grant School Results

- Exposure factors include **concentration, duration, age, and pathway**
 - Exposure pathways: **Ingestion and inhalation**
- Health risks from lead evaluated differently for adults and kids
 - Children more vulnerable to effects of lead exposure
- Risk to children and staff evaluated using blood lead level models
 - Estimates risk of elevated blood lead levels from multiple exposure pathways
- **EPA is taking immediate action to make sure the youngest children using the school are protected from elevated soil concentrations**

Grant School – Next Steps

- **Interim Actions to make sure school is safe for those who use it most**
- Access temporarily restricted to soil areas until protective measures installed
- **EPA is working to open plays areas**
 - Clean cover material to be installed in main play areas first
 - Fencing around low use areas
- Actions to be implemented by EPA over next several weeks

Overall Site Next Steps

• **February/March 2024**

- Begin interim action at Ulysses S. Grant Intermediate School
- Receive validated data and deliver results letters to residents
- Conduct meetings with Board of Education, Faculty, and Parents about school actions
- Conduct additional residential sampling in East Trenton as requested

• **Throughout 2024 - 2025**

- Interim actions to address highest risk properties: schools, parks, and residences
- Review data to determine NPL eligibility
- If eligible, propose site for listing, then address public comments

• **Future, if Site is Listed on NPL**

- Begin characterization (RI/FS) & remedy selection
- Investigate other areas where historic potteries operated
- Record of Decision to perform remedial actions

Community involvement to occur during all activities

EPA SITE TEAM

Joel Petty, Remedial Project Manager, petty.joel@epa.gov, 212-637-4399

Jon Byk, On-Scene Coordinator, byk.jonathan@epa.gov, 347-899-6210

Pat Seppi, Community Involvement Coordinator, seppi.pat@epa.gov, 646-369-0068

Joel Waddell, Community Involvement Coordinator, waddell.joel@epa.gov, 929-656-3416

Abbey States, Risk Assessor, states.abbey@epa.gov, 212-637-4350

Kim Hong, On-Scene Coordinator (Spanish Speaker), hong.kimberly@epa.gov, 929-423-6509



Website:
response.epa.gov/Historic_Potteries

QUESTIONS?