

## Reading Drum Emergency Response



Community Involvement Plan | Reading Drum, PA

Spring 2024

## Table of Contents

---

1. Introduction .....	
1.1 Community Involvement at Superfund Sites .....	
2. Superfund Overview .....	
2.1 What is Superfund? .....	
2.2 What are Removal Actions? .....	
3. Site Investigation and Cleanup .....	
4. About the Reading Community .....	
4.1 Community Demographics .....	
4.2 Environmental Justice .....	
4.3 Community Feedback .....	
5. Community Involvement Tools and Techniques .....	
5.1 Outreach Material .....	
Appendices .....	
A. Acronyms & Community Involvement Action Plan .....	
B. Resources for the Community .....	
C. EPA and Other Agency Contacts .....	
D. Elected Officials .....	
E. Media Outlets .....	
F. Information Repositories .....	
G. Sample Interview Questions .....	
H. Public Notice .....	
I. Additional Websites and Resources .....	

# 1 - Introduction

Under the federal Superfund program, the U.S. Environmental Protection Agency (EPA) is overseeing an environmental investigation and cleanup at the old Lincoln Chemical Factory in Reading, PA. The cleanup is known as the Reading Drum Emergency Response. Since November 2023, EPA, its contractors, and local partners have been onsite at the old Lincoln Chemical Factory in Reading, PA to assess, characterize, and prepare for removal many drums and totes containing potentially hazardous substances that are scattered throughout the non-operational facility. EPA support was requested after two fires occurred in the same week on-site.

## Community Involvement Goals:

- Provide accurate, timely, and understandable information about the cleanup
- Ensure community needs and concerns are considered; and
- Respect and acknowledge community input and feedback on EPA's process as it is being carried out.



## 1.1 Community Involvement at Superfund Sites

The Community Involvement Plan (CIP) is EPA's site-specific roadmap for informing and engaging community members in the Superfund process. This CIP is intended to provide general Superfund program information, describe the site and the community, and identify the needs and concerns of the community.

Furthermore, this CIP is intended to be a resource for EPA staff, our various partners, and the community. The CIP will inform new team members about the community, identify community concerns, and list community resources for communicating with residents and officials.

This Community Involvement Plan:

- Adopts community involvement tools and practices to be used at the Reading Drum Emergency Response
- Incorporates recommendations from members of the Joint Information Center (JIC) regarding ways to inform community members

### Contact Information

#### **Ashley Nilsen**

##### **On Scene Coordinator**

U.S. EPA Region III  
1600 JFK Bld - 3SD31  
Philadelphia, PA 19103  
Phone: (215) 814-3269  
Email: [nilsen.ashley@epa.gov](mailto:nilsen.ashley@epa.gov)

#### **Angela Ithier**

##### **Public Information Officer**

U.S. EPA Region III  
1600 JFK Bld - 3RA22  
Philadelphia, PA 19103  
Phone: (215) 814-5248  
Email: [ithier.angela@epa.gov](mailto:ithier.angela@epa.gov)

#### **Renata Thakurdial**

##### **Community Involvement Coordinator**

U.S. EPA Region III  
1600 JFK Bld - 3RA22  
Philadelphia, PA 19103  
Phone: (215) 814-2745  
Email: [thakurdial.renata@epa.gov](mailto:thakurdial.renata@epa.gov)

#### **John Brakeall**

##### **Public Information Officer**

U.S. EPA Region III  
1600 JFK Bld - 3RA22  
Philadelphia, PA 19103  
Phone: (215) 814-5537  
Email: [brakeall.john@epa.gov](mailto:brakeall.john@epa.gov)

## 2 - Superfund Overview

---

### 2.1 - What is Superfund?

To participate in or follow the Superfund process as it unfolds in your community, it is important to know what Superfund is and how it works. EPA's Superfund program, enacted in 1980 under the Comprehensive Environmental Response, Compensation, and Liability Act (CERCLA) and amended in 1986 by the Superfund Amendments and Reauthorization Act (SARA), is responsible for cleaning up some of the nation's most contaminated land and responding to environmental emergencies, oil spills, and natural disasters. To protect public health and the environment, the Superfund program focuses on making a visible and lasting difference in communities, ensuring that people can live and work in healthy, vibrant places.

There are several steps involved in cleaning up a contaminated site. Once EPA is made aware of a contaminated site from individual citizens, local or state agencies or others, EPA follows a step-by-step process to determine the best way to clean up the site and protect human health and the environment. If the site poses an immediate threat to public health or the environment, EPA can intervene with an emergency response or removal action.

**For more information EPA's cleanup programs,  
please visit:**

- **EPA's Superfund website**  
<https://www.epa.gov/superfund>
- **This is Superfund: A Community Guide to EPA's Superfund Program**  
<https://semspub.epa.gov/src/document/HQ/175197>

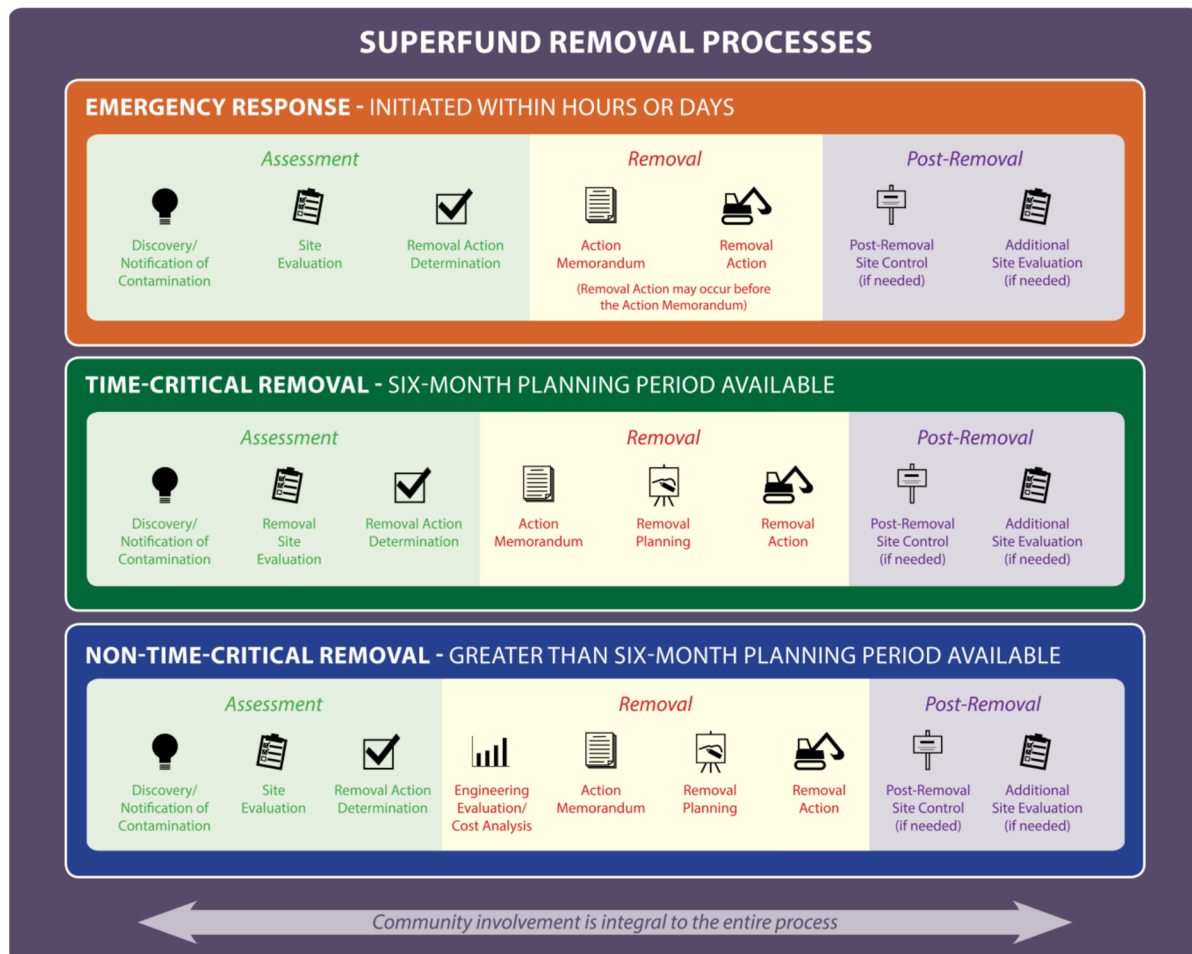


## 2.2 What are Removal Actions?

Removal actions are responses to releases that threaten the public health, welfare, or the environment of the United States. These actions tend to be swift in order to address immediate threats from hazardous substances, pollutants, or contaminants.

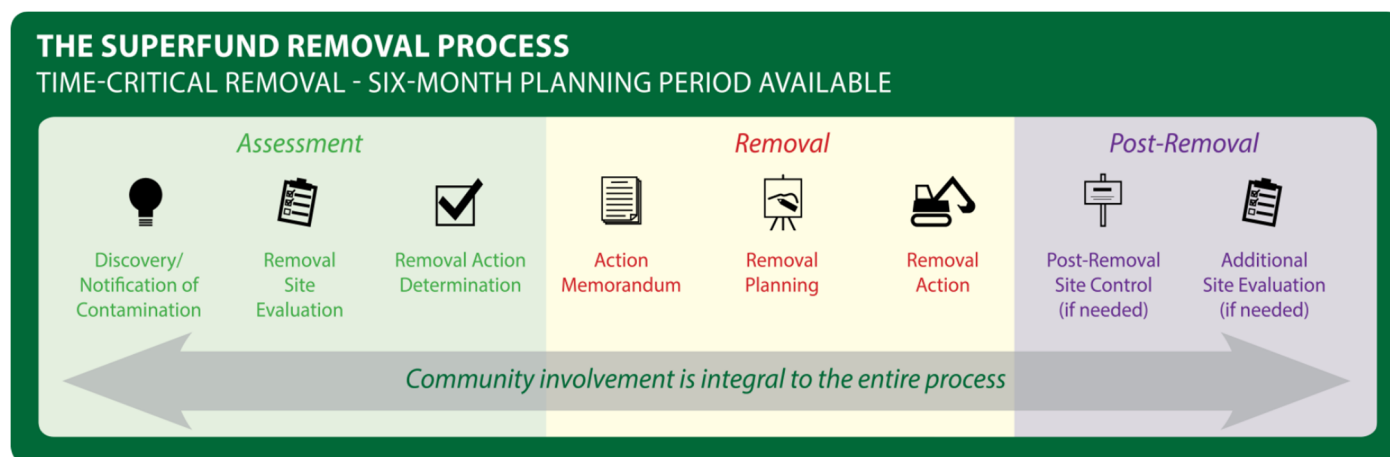
Removal actions are initiated when an Action Memorandum (action memo) is signed. The action memo designates the type of removal action to be conducted. Alternatively, EPA can use a Special Bulletin to quickly begin removal actions in emergency situations. There are three types of removal actions:

1. **Emergency Removals** require an immediate response to releases or threatened releases to the environment.
2. **Time-Critical Removals** are situations for which EPA determines that a removal is appropriate and onsite removal activities must begin within six months.
3. **Non-Time-Critical Removals** are undertaken when EPA determines that a removal action is appropriate and the situation allows for a planning period of at least six months before on-site activities must begin.



### 3 - Site Investigation and Cleanup

Reading Drum Emergency Response has been designated as a time-critical removal. It is a **long-term response** because removal actions extend beyond 120 days.



#### Community Overview

The Lincoln Chemical Company in Reading, PA is a non-operational facility with numerous chemicals in containers stored throughout the building. These chemicals include flammables, combustibles, acids, bases, oxidizers, and peroxides. After fires that occurred on October 31 and November 2, 2023, the building is in a dilapidated state and has been half demolished. The area surrounding the site is zoned mixed industrial and residential.

#### Community Engagement

EPA established a Joint Information Center comprised of representatives from the City of Reading, the County of Berks Emergency Services Department, Pennsylvania Department of the Environment (PADEP) to share concerns, manage messaging with the larger community, and address any communications needs to ensure a smooth cleanup process.

The City of Reading directed concerned citizens to call their Citizen Service Center with any complaints or concerns [877-727-3234]. The Citizen Service Center also has a physical location in City Hall.

EPA sent a factsheet and postcard to local residents and businesses to explain the on-going cleanup process.

The EPA response page and a Story Map [in English and Spanish] are available for community members to track the progress of the cleanup.

## Response Timeline

Oct. 31<sup>st</sup>: Local fire department responded to and put out first fire.

Nov. 2<sup>nd</sup>: A second fire occurs and EPA, along with its contractors and PA DEP, join local and county responders to investigate the report of containers of chemicals in the building.

Nov. 3<sup>rd</sup>: Air monitoring starts, and a boom is placed at the outfall near the river to collect any contaminants that may flow away from the site. As part of fire-fighting efforts, there is a partial demolition near the top of the building to allow access to 'hot spots' in the building. More water is needed on these spots to put the fire out completely.

Nov. 4<sup>th</sup>: The fire is put out completely and local first responders inspect the inside of the building to determine its structural safety. EPA conducts initial brief entry to put together a plan of action for its investigation.

Nov. 5<sup>th</sup>- 8<sup>th</sup>: EPA and its contractor make short purposeful entries into the building to catalog chemicals and sort them into different areas of the site that are stable and safe for temporary storage.

Nov. 9<sup>th</sup>: All on-site workers must cease activity because the morning building inspection revealed a structural concern. Additional inspection is conducted, and further demolition is needed to stabilize the building for worker safety.



Nov. 10<sup>th</sup>- 16<sup>th</sup>: The City of Reading conducted additional demolition work to stabilize the fire-impacted portion of the structure. Continuation of short purposeful entries to catalog chemicals and sort them into different areas of the site that are stable and safe for temporary storage.



## Response Timeline

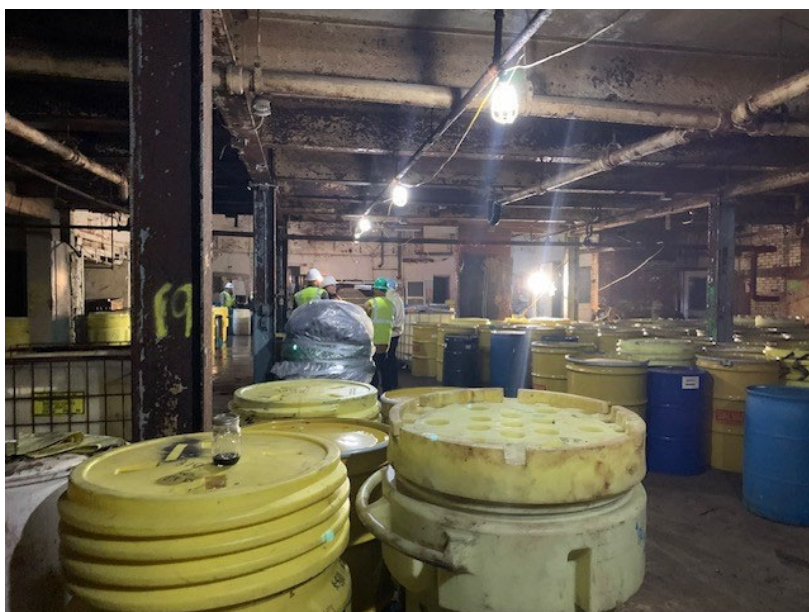
Nov. 17<sup>th</sup>-18<sup>th</sup>: Continuation of short, purposeful entries to catalog chemicals and sort them into different areas of the site that are stable and safe for temporary storage.

Nov. 19<sup>th</sup>-26<sup>th</sup>: During the week of Thanksgiving there is a pause to give rest to on-site workers. Security surveillance continued during this time.

Nov. 27<sup>th</sup>-Dec. 1<sup>st</sup>: The investigation has progressed significantly. Local first responders inspect the inside of the building to determine its structural safety. All containers with chemicals are tested in the mobile laboratory to identify what is inside (catalog) and are then moved to a location on-site for temporary storage. The work of identifying everything stored in drums and totes in the building is 75% complete. Air monitoring is on-going, and results are below any levels of concern.

Dec. 2<sup>nd</sup>-8<sup>th</sup>: Sampling and sorting of containers discovered on the property are estimated to be 80% complete. The results of the sampling and sorting process are being used to inform future disposal actions. The boom which was placed at the nearby outfall to the Schuylkill River was removed because it was determined that there is no longer a need for it.

Dec. 11<sup>th</sup> -17<sup>th</sup>: Sampling and sorting of containers discovered on the property are estimated to be 90% complete. After screening rainwater on-site, EPA received approval from the Reading Area Water Authority to discharge rainwater from work areas into the sewer line. Future discharges of rainwater will require approval from the Reading Area Water Authority. Air monitoring is on-going, and the results showed slight exceedances that can be attributed to vehicle exhaust and weather.



## Response Timeline

Dec. 18<sup>th</sup> -21<sup>st</sup>, 2023

Structural integrity checks occur every day before work begins. Air monitoring is on-going. EPA has been screening rainwater and received approval to discharge rainwater from work areas into the sewer line. Teams worked to organize a central staging area with stabilized drums and totes based on their contents. Disposal samples were taken and delivered to a laboratory for analysis, this will help determine where waste should be shipped off-site. The building was secured for a pause in work over the holidays and portions of 9th and Laurel Streets were closed.

Dec. 22<sup>nd</sup>, 2023 – January 2<sup>nd</sup>, 2024

After a week of rest, work crews returned on January 3, 2024. Security was on-site 24/7 during this period.

Jan. 3<sup>rd</sup> – 6<sup>th</sup>, 2024

EPA has been screening rainwater and, with approval, has been discharging it into the city sewer line. Further preparation for shipping stabilized drums and totes off-site has begun. Disposal samples are being prepared and sent out to determine which disposal facilities can accept the waste. A portion of the building, which is structurally stable, has been designated for storing drums and totes that are ready to be shipped off-site.



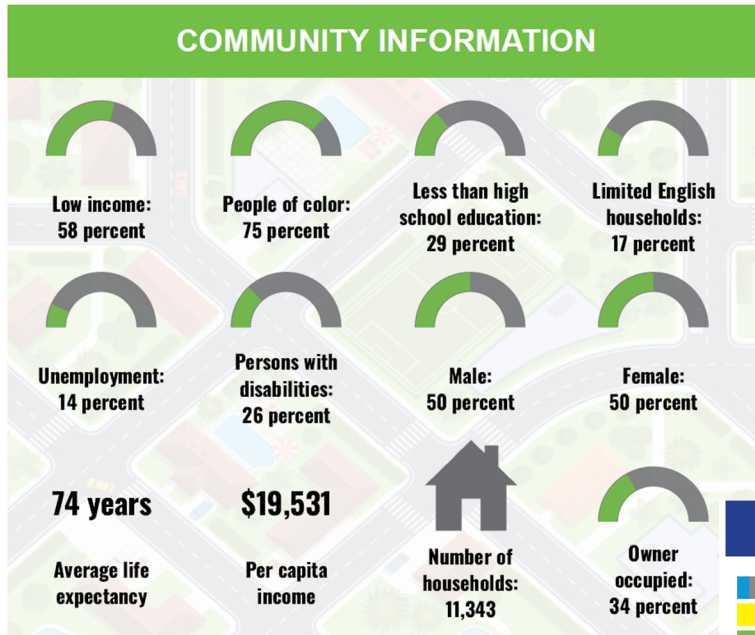
Jan. 8<sup>th</sup> – 20<sup>th</sup>, 2024

EPA has been screening rainwater and, with approval, has been discharging it into the city sewer line. Field screening of the contents of totes and drums is nearly complete. Securely prepared totes and drums, whose contents have been characterized, are being stored in the central staging area. The central staging area is continually re-organized to accommodate additional drums and totes ready for shipping off-site.

## 4 - About the Reading Community

### 4.1 Community Demographics

Based on 2020 Census Data



#### BREAKDOWN BY AGE

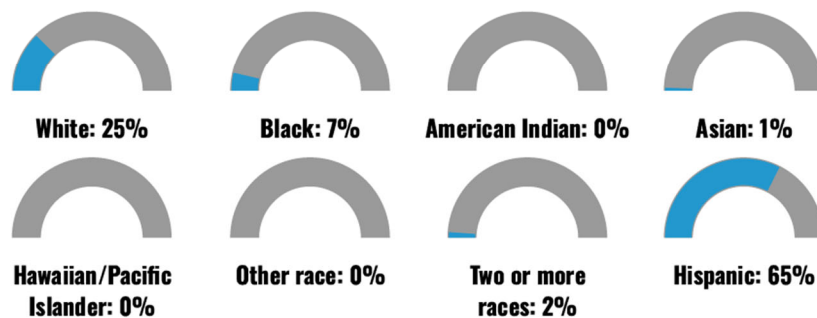


#### LIMITED ENGLISH SPEAKING BREAKDOWN



Notes: Numbers may not sum to totals due to rounding. Hispanic population can be of any race. Source: U.S. Census Bureau, American Community Survey (ACS) 2017-2021. Life expectancy data comes from the Centers for Disease Control.

#### BREAKDOWN BY RACE



## 4.2 Environmental Justice

Environmental Justice is the fair treatment and meaningful involvement of all people regardless of race, color, national origin or income, with respect to the development, implementation and enforcement of environmental laws, regulations and policies.

EPA Region 3 programs collaborate closely to make sure underserved, low income and tribal communities facing disproportionate environmental risks have opportunities for meaningful participation in environmental decision-making. Region 3 also coordinates closely with EPA Headquarters and states to support initiatives that provide all people living near Superfund sites with technical assistance, training opportunities and other services. EPA has a variety of environmental justice resources available at [www.epa.gov/environmentaljustice](http://www.epa.gov/environmentaljustice), including:

*Environmental Justice Thriving Communities Technical Assistance Centers (EJ TCTAC)* Program will establish technical assistance centers across the nation providing technical assistance, training, and related support to communities with environmental justice concerns and their partners. The services provided will include training and assistance on writing grant proposals, navigating federal systems such as Grants.gov and SAM.gov, effectively managing grant funds, community engagement, meeting facilitation, and translation and interpretation services for limited English-speaking participants.

### EJSCREEN

EJSCREEN is an environmental justice mapping and screening tool. It uses environmental indicators for a community to show potential exposures and demographic factors to show potential susceptibility. An EJSCREEN analysis for the Site was completed in 2024. The environmental and demographic information for a one-mile radius surrounding the Reading Drum Emergency Response Site is compared to the rest of the State of Pennsylvania and the nation in the chart below. As an example, if a given location is at the 95th percentile nationwide, this means that only 5 percent of the US population has a higher block group value than the average person in the location being analyzed.

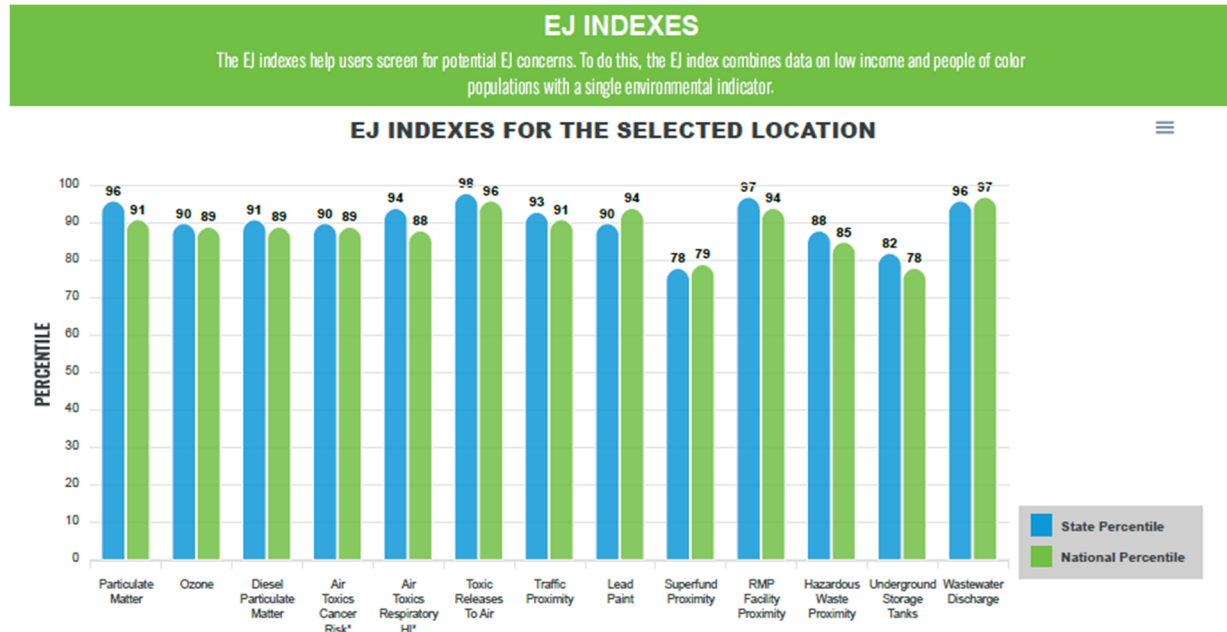
**The EJSCREEN noted that all of the environmental indicators for this location are approximately at or exceed the 80th percentile for the State and Nation.**

More information about EJSCREEN and how to interpret a standard report can be found at:

<https://www.epa.gov/ejscreen/understanding-ejscreen-results>

## 4.2 Environmental Justice

Selected Area: 1 mile Ring centered at non-operational Lincoln Chemical Factory [40.327043,-75.920656]



Reading, Pennsylvania (Population: 29,185): EPA Region 3

### EJSCREEN Quick Facts

To summarize how environmental indicators and demographics come together in the same location, EJSCREEN uses EJ Indexes. EJSCREEN has 13 EJ Indexes that reflect the 13 environmental indicators below. In the EJ Indexes, environmental indicators are combined with information about the low-income and minority population in a Census block group. EJSCREEN presents results in terms of percentiles, allowing the community to be compared to the rest of the state or nation.

- National Scale Air Toxics Assessment Air Toxics Cancer Risk
- National Scale Air Toxics Assessment Respiratory Hazard Index
- National Scale Air Toxics Assessment Diesel Particulate Matter (DPM)
- Toxic Releases to Air
- Particulate Matter (PM2.5)
- Ozone
- Lead Paint Indicator
- Traffic Proximity and Volume
- Proximity to Risk Management Plan Sites
- Proximity to Treatment Storage and Disposal Facilities
- Proximity to National Priorities List (NPL) Sites



## 4.2 Environmental Justice



### Community Resources

#### **Reading Public Library (5 total locations)**

100 S 5th Street

Reading, PA 19602

#### **Reading Science Center**

645 Penn Street

Reading, PA 19601

#### **Citizen's Service Center**

815 Washington Street, Rm 1-27

Reading, PA 19601

#### **Centro Hispano Daniel Torres**

25 N 2nd Street,

Reading, PA, 19601

#### **GoggleWorks Center for the Arts**

201 Washington Street

Reading, PA 19601

#### **Reading Public Museum**

500 Museum Road

Reading, PA 19611

### 4.3 Community Feedback

Beginning in early 2024, EPA began conducting interviews with partners in the JIC. The interviews help guide development of the Community Involvement Plan. EPA collected feedback verbally through phone calls and through written responses.

Interviewees included representatives from Pennsylvania Department of Environmental Protection (PA DEP), Berks County Department of Emergency Management Services, and the City of Reading. Those interviewed have been engaged in the emergency responses actions and communications at the site in different capacities. They shared a few recommendations regarding outreach efforts. Recommendations included:

- Respondents support EPA's use of door to door mailers. Door to door mailers, especially to those in close vicinity of the site, is an effective tool for engaging the community.
- There is a large Spanish-speaking population in Reading. Producing materials in Spanish is critical.
- Local media is an effective way to share information. Respondents recommended using local media outlets like WFMZ, WFMZ in Spanish, Reading Eagle, Berks Weekly, and others.

All those interviewed stated that they were pleased with EPA's outreach efforts to date. EPA will continue to work closely with the community and JIC to ensure effective community engagement.

## 5 - Community Involvement Tools and Techniques

---

The foundation of Superfund's Community Involvement Program is the belief that members of the community affected by a Superfund site have the right to be informed and involved in EPA's decision-making process. EPA recognizes the benefits that an engaged public brings to the Superfund cleanup process and is committed to providing and encouraging public participation so that the people whose lives have been impacted by hazardous waste sites, and EPA's actions to clean them up, have a say in what happens in their community. EPA's Community Involvement Program strives to maintain a consistent community presence and build relationships with the community and local stakeholders, as well as local, state, and other federal government agencies.

This Community Involvement Action Plan highlights EPA's key objectives, methods and timeline for conducting site-specific activities to keep residents, community stakeholders, and local officials informed and involved throughout the cleanup process. Which ones are used and how frequently they occur usually reflect the stage in the process and level of interest expressed by the community. To establish this plan, EPA considered several factors, including community needs, concerns and recommendations.

For more information on available community resources, please visit:

**EPA's Superfund Community Involvement Website**

<https://www.epa.gov/superfund/superfund-community-involvement>

# 5 - Community Involvement Tools and Techniques

## 5.1 Outreach Material

**Reading Drum Emergency Response**  
U.S. EPA Region 3 - Reading, Pennsylvania  
January 10, 2024

**Respuesta de Emergencia Reading Drum**  
U.S. EPA Region 3 - Reading, Pennsylvania  
10 de enero, 2024

**Reading, Pennsylvania** November 2023

**Reading Drum Fire**

**EPA begins assessment**  
The U.S. Environmental Protection Agency (EPA), along with its contractor, have partnered with the Pennsylvania Department of Environmental Protection, Berks County, and the City of Reading to immediately start air monitoring activities in the area. EPA will lead an on-going assessment to determine what may be stored in the old Lincoln Chemical Company building in Reading, Pennsylvania. Though no longer in business, there are abandoned chemical storage containers throughout the building. Assessment and subsequent cleanup activities will safely address any hazardous chemicals that remain. The main objective of the cleanup are:

- Protect human health and environment in the area
- Ensure the safety of responders and all site workers
- Stabilize abandoned containers left in-situ to reduce the threat of release
- Identify what is in the containers and determine how to properly dispose of them

**Are there chemicals in the building?**  
There are abandoned hazardous chemical storage containers in the building. EPA is still working to identify what these chemicals are.

**What are the results of the air monitoring?**  
Initial results of air monitoring from multiple analyzers that were strategically placed around the fire area. All monitoring results have shown safe levels.

**MAP OF THE BUILDING AND NEARBY STREETS**

**What can I expect?**

- Change will continue for several weeks. EPA will have security measures in place during this time.
- You may see workers loading containers of chemicals onto trucks, for transportation to a permitted disposal facility. Workers will wear personal protective equipment, such as chemical protective suits and respirators.
- Traffic around the intersection of South 9th and Laurel Streets will be blocked for the safety of the community.
- Air monitoring equipment will be set-up in the area near the burned building.

**Questions? Contact us:**  
Ashley Nilsen, On-Scene Coordinator  
U.S. EPA Region 3  
ashley.nilsen@epa.gov  
215-814-3269

Renata Thakurdyal, Community Involvement Coordinator  
U.S. EPA Region 3  
thakurdyal.renata@epa.gov  
215-814-2745

**Reading, Pennsylvania** Noviembre 2023

**Incendio de tambores en Reading**

**EPA comienza la evaluación**  
Agencia de Protección Ambiental de Estados Unidos (EPA, por sus siglas en inglés), junto con su contratista, se han asociado con el Departamento de Protección Ambiental de Pensilvania, el condado de Berks y la ciudad de Reading para comenzar de inmediato las actividades de monitoreo del aire en el área. La EPA dirige una evaluación continua para determinar lo que puede almacenarse en el antiguo edificio de la Lincoln Chemical Company en Reading, Pensilvania. Aunque ya no está en funcionamiento, los contenedores de almacenamiento de productos químicos abandonados en todo el edificio. La evaluación y las actividades de limpieza posterior eliminarán de manera segura cualquier producto químico peligroso que quede. Los principales objetivos de la limpieza son:

- Proteger la salud humana y el medioambiente en la zona
- Garantizar la seguridad de los respondedores y de todos los trabajadores en el sitio
- Estabilizar los contenedores abandonados in situ para reducir la amenaza de liberación
- Determinar qué hay en los contenedores y cómo descartarlos adecuadamente.

**¿Hay sustancias químicas en el edificio?**  
Hay contenedores de almacenamiento de productos químicos peligrosos abandonados en diferentes condiciones en todo el edificio. La EPA todavía está trabajando para identificar cuáles son estas sustancias químicas.

**¿Cuáles son los resultados del monitoreo del aire?**  
Los resultados iniciales del monitoreo del aire son de múltiples analizadores que se colocaron estratégicamente alrededor del área del incendio. Todos los resultados del monitoreo han mostrado niveles seguros.

**¿Qué puedo esperar?**

- La limpieza continuará durante varias semanas. La EPA tendrá medidas de seguridad durante este tiempo.
- Es posible que vea trabajadores cargando contenedores de productos químicos en camiones, para transportarlos a una instalación de eliminación permitida. Los trabajadores usarán equipo de protección personal, como trajes de protección química y respiradores.
- El tráfico alrededor de la intersección de las calles South 9th y Laurel estará bloqueado por la seguridad de la comunidad.
- Se pondrán equipos de monitoreo del aire en el área cercana al edificio quemado.

**¿Preguntas? Contáctenos:**  
Ashley Nilsen, Coordinadora en Escena  
U.S. EPA Región 3  
ashley.nilsen@epa.gov  
215-814-3269

Renata Thakurdyal, Coordinadora de Participación Comunitaria  
U.S. EPA Región 3  
thakurdyal.renata@epa.gov  
215-814-2745

**EPA Reading Drum Respuesta de Emergencia**

**ACTUALIZACIÓN DEL SITIO | Diciembre 2023**

Esta comunicación proporciona una actualización sobre el estado de la respuesta de emergencia.

- Las actividades de limpieza están en curso y se espera que finalicen a principios de 2024.
- El monitoreo del aire está en curso y los resultados están por debajo de cualquier nivel de preocupación.
- El monitoreo y clasificación de contenedores en todo el edificio está completo en aproximadamente un 80%.
- Habría un **pausa en las actividades laborales del 22 de diciembre al 2 de enero**. El trabajo se reanuda el 3 de enero. Habrá seguridad en el lugar durante las vacaciones.

Consulte el enlace a continuación como la información más actualizada para la respuesta de emergencia de Reading Drum o escanee el código QR que se encuentra en la parte superior derecha.

**\*El Mapa Histórico [StoryMap]:**  
<https://arcgis.com/mhc/ckc>

Si necesita ayuda para acceder al Mapa Histórico [StoryMap], vaya a la información repositorio del sitio: Reading Public Library 100 S 5th St

Contáctenos si tiene alguna pregunta o inquietud.

Ashley Nilsen, Coordinadora en Escena  
Agencia de Protección Ambiental de los Estados Unidos  
215-814-3269 • nilsen.ashley@epa.gov

Renata Thakurdyal, Coordinadora de Participación Comunitaria  
Agencia de Protección Ambiental de los Estados Unidos  
215-814-2745 • thakurdyal.renata@epa.gov

**EPA Reading Drum Emergency Response**

**SITE UPDATE | December 2023**

This communication provides an update on the status of the emergency response.

- The clean up activities are on-going and are expected to be completed in early 2024.
- Air monitoring is on-going and the results are below any levels of concern.
- The sampling and sorting of containers throughout the building is about 80% complete.
- There will be a **pause in work activities from December 22nd to January 2nd**. Work will resume on January 3rd. There will be security on-site throughout the holiday break.

There is a **StoryMap** with details and pictures of the on-going cleanup activities. Scan the QR Code with your smartphone or visit the website: [StoryMap: https://arcgis.com/mhc/ckc](https://arcgis.com/mhc/ckc)

If you need assistance accessing the StoryMap, please go to the information repository for the site: Reading Public Library, 100 S 5th St Reading, PA 29602

Please contact us with any questions or concerns.

Ashley Nilsen, On-Scene Coordinator  
U.S. Environmental Protection Agency  
215-814-3269 • nilsen.ashley@epa.gov

Renata Thakurdyal, Community Involvement Coordinator  
U.S. Environmental Protection Agency  
215-814-2745 • thakurdyal.renata@epa.gov

**EPA Reading Drum Respuesta de Emergencia**

**Actualización de la comunidad | Enero 2024**

**Proveedores de Respuesta**  
La Unión Química de la Industria (UQI) es una industria o empresa con diversos productos químicos que se almacenan en contenedores. Desde el 1 de enero hasta el 2 de febrero de 2024, el edificio de la UQI en Reading, PA, será cerrado al público. Durante este tiempo, los trabajadores de la UQI estarán trabajando en el sitio para asegurar la seguridad de la comunidad.

**¿Qué puedo esperar?**

- La limpieza continuará durante varias semanas. La EPA tendrá medidas de seguridad durante este tiempo.
- Es posible que vea trabajadores cargando contenedores de productos químicos en camiones, para transportarlos a una instalación de eliminación permitida. Los trabajadores usarán equipo de protección personal, como trajes de protección química y respiradores.
- El tráfico alrededor de la intersección de las calles South 9th y Laurel estará bloqueado por la seguridad de la comunidad.
- Se pondrán equipos de monitoreo del aire en el área cercana al edificio quemado.

**¿Preguntas? Contáctenos:**  
Ashley Nilsen, Coordinadora en Escena  
U.S. EPA Región 3  
ashley.nilsen@epa.gov  
215-814-3269

Renata Thakurdyal, Coordinadora de Participación Comunitaria  
U.S. EPA Región 3  
thakurdyal.renata@epa.gov  
215-814-2745

**EPA Reading Drum Respuesta de Emergencia**

**Actualización de la comunidad | Enero 2024**

**Proveedores de Respuesta**  
La Unión Química de la Industria (UQI) es una industria o empresa con diversos productos químicos que se almacenan en contenedores. Desde el 1 de enero hasta el 2 de febrero de 2024, el edificio de la UQI en Reading, PA, será cerrado al público. Durante este tiempo, los trabajadores de la UQI estarán trabajando en el sitio para asegurar la seguridad de la comunidad.

**¿Qué puedo esperar?**

- La limpieza continuará durante varias semanas. La EPA tendrá medidas de seguridad durante este tiempo.
- Es posible que vea trabajadores cargando contenedores de productos químicos en camiones, para transportarlos a una instalación de eliminación permitida. Los trabajadores usarán equipo de protección personal, como trajes de protección química y respiradores.
- El tráfico alrededor de la intersección de las calles South 9th y Laurel estará bloqueado por la seguridad de la comunidad.
- Se pondrán equipos de monitoreo del aire en el área cercana al edificio quemado.

**¿Preguntas? Contáctenos:**  
Ashley Nilsen, Coordinadora en Escena  
U.S. EPA Región 3  
ashley.nilsen@epa.gov  
215-814-3269

Renata Thakurdyal, Coordinadora de Participación Comunitaria  
U.S. EPA Región 3  
thakurdyal.renata@epa.gov  
215-814-2745

**EPA Reading Drum Emergency Response**

**Community Update | January 2024**

**Proveedores de Respuesta**  
The Union Chemical Company in Reading, PA is a non-specified facility with numerous chemicals in containers stored throughout the building. From January 1st through February 2nd, 2024, the building will be closed to the public. During this time, the workers at the facility will be working to ensure the safety of the community.

**¿Qué puedo esperar?**

- La limpieza continuará durante varias semanas. La EPA tendrá medidas de seguridad durante este tiempo.
- Es posible que vea trabajadores cargando contenedores de productos químicos en camiones, para transportarlos a una instalación de eliminación permitida. Los trabajadores usarán equipo de protección personal, como trajes de protección química y respiradores.
- El tráfico alrededor de la intersección de las calles South 9th y Laurel estará bloqueado por la seguridad de la comunidad.
- Se pondrán equipos de monitoreo del aire en el área cercana al edificio quemado.

**¿Preguntas? Contáctenos:**  
Ashley Nilsen, Coordinadora en Escena  
U.S. EPA Región 3  
ashley.nilsen@epa.gov  
215-814-3269

Renata Thakurdyal, Coordinadora de Participación Comunitaria  
U.S. EPA Región 3  
thakurdyal.renata@epa.gov  
215-814-2745

**EPA Reading Drum Emergency Response**

**Community Update | January 2024**

**Proveedores de Respuesta**  
The Union Chemical Company in Reading, PA is a non-specified facility with numerous chemicals in containers stored throughout the building. From January 1st through February 2nd, 2024, the building will be closed to the public. During this time, the workers at the facility will be working to ensure the safety of the community.

**¿Qué puedo esperar?**

- La limpieza continuará durante varias semanas. La EPA tendrá medidas de seguridad durante este tiempo.
- Es posible que vea trabajadores cargando contenedores de productos químicos en camiones, para transportarlos a una instalación de eliminación permitida. Los trabajadores usarán equipo de protección personal, como trajes de protección química y respiradores.
- El tráfico alrededor de la intersección de las calles South 9th y Laurel estará bloqueado por la seguridad de la comunidad.
- Se pondrán equipos de monitoreo del aire en el área cercana al edificio quemado.

**¿Preguntas? Contáctenos:**  
Ashley Nilsen, Coordinadora en Escena  
U.S. EPA Región 3  
ashley.nilsen@epa.gov  
215-814-3269

Renata Thakurdyal, Coordinadora de Participación Comunitaria  
U.S. EPA Región 3  
thakurdyal.renata@epa.gov  
215-814-2745

## Appendix A - Acronyms & Abbreviations

---

<b>ATSDR</b>	Agency for Toxic Substances and Disease Registry
<b>ACS</b>	American Community Survey
<b>CAG</b>	Community Advisory Group
<b>CERCLA</b>	Comprehensive Environmental Response, Compensation, and Liability Act
<b>CIC</b>	Community Involvement Coordinator
<b>CIP</b>	Community Involvement Plan
<b>EJ</b>	Environmental Justice
<b>EPA</b>	Environmental Protection Agency
<b>JIC</b>	Joint Information Center
<b>NPL</b>	National Priorities List
<b>OSC</b>	On-Scene Coordinator
<b>PADEP</b>	Pennsylvania Department of Environmental Protection
<b>PRPs</b>	Potentially Responsible Parties
<b>SARA</b>	Superfund Amendments and Reauthorization Act
<b>TASC</b>	Technical Assistance Services for Communities



## Community Involvement Action Plan

Community Involvement Objectives	Tools & Methods	Status
Establish a Joint Information Center (JIC) with partnering agencies and establish points of contact for the community	Dedicate points of contact for community, host regular meetings with JIC to collaborate on community involvement.	Completed
Establish a location for the community to access key Site information	Information repository in community and at EPA	Completed
Maintain a consistent community presence to build relationships, especially among those most directly affected by contamination and cleanup	Door-to-door outreach, stakeholder interviews, factsheet and post card distribution, website updates, media updates, email updates, newspaper ads	Ongoing as needed Outreach commenced in November 2023 and is ongoing
Conduct early, frequent, and meaningful community involvement activities using a wide variety of tools and strategies to engage and communicate ongoing and planned site activities with the community		
Explain technical site activities and findings in a format that all can understand		
Evaluate community involvement and outreach efforts and adjust as necessary	Update Community Involvement Plan	Periodically throughout the cleanup process, on an as-needed basis

## Appendix B - Resources for the Community

EPA offers many opportunities and resources to facilitate the community's involvement in EPA's activities and decisions. Which tools are used and how many activities occur usually reflects the level of interest expressed by the community. For a comprehensive description of available resources and opportunities, go to: [www.epa.gov/superfund/superfund-community-involvement](http://www.epa.gov/superfund/superfund-community-involvement)

### Get Involved and Get Support

#### **Community Advisory Group (CAG)**

- Self-governing stakeholder group that meets regularly to learn about EPA's cleanup process, discuss issues and concerns, and provide feedback to EPA. EPA can provide support to the CAG by attending meetings, making presentations, procuring meeting rooms, advertising the meetings, and providing copies of site-related documents.

#### **Technical Assistance Needs Assessment (TANA) Tool**

- This process identifies additional support that a community may require in order to understand technical information and participate meaningfully in the Superfund decision-making process. A TANA helps EPA determine what technical assistance resources and information the Agency can provide to meet community needs.

#### **Technical Assistance Services for Communities (TASC) Program**

- This program provides services through a national EPA contract. Under the contract, a contractor provides scientists, engineers and other professionals to review and explain information to communities. TASC services are determined on a project-specific basis and provided at no cost to communities.

#### **Technical Assistance Grant (TAG) Program**

- TAGs are awarded to non-profit incorporated community groups. With TAG funding, community groups can contract with independent technical advisors to interpret and help the community understand technical information about their site. The TAG recipient group is responsible for managing their grant funds and contributing a 20 percent award match. Most groups meet this requirement through in-kind contributions such as volunteer hours toward grant-related activities.

#### **Technical Assistance Plan (TAP)**

- A TAP is funded by potentially responsible parties through provisions in a negotiated settlement agreement. A TAP enables community groups to retain the services of an independent technical advisor and to provide resources for a community group to help other community members learn about site decisions.

For questions, please contact the site's Community Involvement Coordinator:

**Renata Thakurdyal**  
(215) 814-2745  
[thakurdyal.renata@epa.gov](mailto:thakurdyal.renata@epa.gov)

## Appendix C - EPA and Other Agency Contacts

---

### EPA

**Ashley Nilsen**  
**On Scene Coordinator**  
U.S. EPA Region III  
1600 JFK Blvd.  
Philadelphia, PA 19103  
Phone: (215) 814-3269  
Email: [nilsen.ashley@epa.gov](mailto:nilsen.ashley@epa.gov)

**Kelley Chase**  
**On Scene Coordinator**  
U.S. EPA Region III  
1600 JFK Blvd.  
Philadelphia, PA 19103  
Phone: (215) 814-3124  
Email: [chase.kelley@epa.gov](mailto:chase.kelley@epa.gov)

**Eduardo Rovira**  
**On Scene Coordinator**  
U.S. EPA Region III  
1600 JFK Blvd.  
Philadelphia, PA 19103  
Phone: (215) 814-3436  
Email: [rovira.eduardo@epa.gov](mailto:rovira.eduardo@epa.gov)

**Lisa Trakis**  
**TASC Coordinator**  
U.S. EPA Region III  
1600 JFK Blvd.  
Philadelphia, PA 19103  
Phone: (215) 814-5433  
Email: [trakis.lisa@epa.gov](mailto:trakis.lisa@epa.gov)

**Renata Thakurdial**  
**Community Involvement Coordinator**  
U.S. EPA Region III  
1600 JFK Blvd.  
Philadelphia, PA 19103  
Phone: (215) 814-2745  
Email: [thakurdial.renata@epa.gov](mailto:thakurdial.renata@epa.gov)

**John Brakeall**  
**Public Information Officer/TAG Coordinator**  
U.S. EPA Region III  
1600 JFK Blvd.  
Philadelphia, PA 19103  
Phone: (215) 814-5537  
Email: [brakeall.john@epa.gov](mailto:brakeall.john@epa.gov)

**Angela Ithier**  
**Public Information Officer**  
U.S. EPA Region III  
1600 JFK Blvd.  
Philadelphia, PA 19103  
Phone: (215) 814-5248  
Email: [ithier.angela@epa.gov](mailto:ithier.angela@epa.gov)

**Katherine Page**  
**CAG Coordinator**  
U.S. EPA Region III  
1600 JFK Blvd.  
Philadelphia, PA 19103  
Phone: (215) 814-2409  
Email: [page.katherine@epa.gov](mailto:page.katherine@epa.gov)

### State Agency

**Pennsylvania Department of Environmental Protection**  
**John Repetz**  
**Regional Communications Manager**  
Southcentral Regional Office  
909 Elmerton Ave.  
Harrisburg, PA 17110  
Phone: (717) 705-4704  
[www.dep.pa.gov](http://www.dep.pa.gov)

## Appendix D - Elected Officials

---

### Federal

**Senator Bob Casey**

393 Russell Senate Office Building  
Washington, DC 20510  
Phone: (866) 802-2833  
<https://www.casey.senate.gov/>

**U.S. Representative Chrissy Houlahan**

201 Penn Steet, Suite 201  
Reading, PA 19601  
Phone: (610) 295-0815  
<https://houlahan.house.gov/>

**Senator John Fetterman**

142 Russell Senate Office Building  
Washington, DC 20510  
Phone: (202) 224-4254  
<https://www.fetterman.senate.gov/>

### State

**Governor Josh Shapiro**

508 Main Capital Building  
Harrisburg, PA 17120  
(717) 787-2500  
<https://www.governor.pa.gov/>

**Representative Judith Schwank****District 11**

210 George Street, Suite 201  
Reading, PA 19605  
Phone: (610) 929-2151  
<https://www.senatorschwank.com/>

**Representative Manuel Guzman Jr.,****District 127**

645 Penn Street, 4th Floor  
Reading, PA 19601  
Phone: (610) 376-1529  
<https://www.pahouse.com/guzman/>

## Appendix D - Elected Officials

---

### Local

#### **Mayor Eddie Moran, City of Reading**

Reading, PA 19601

Phone: (610)-655-6234

<https://www.readingpa.gov/office-of-the-mayor>

#### **City Council, City of Reading**

815 Washington Street

Philadelphia, PA 19601

Phone: (610) 655-6204

<https://www.readingpa.gov/city-council>

#### **Commissioners, County of Berks**

Berks County Service Center

633 Court Street, 13th Floor

Reading, PA 19601

Phone: (610) 478-6136

<https://www.countyofberks.com/departments/commissioners>



## Appendix E - Media Contacts

---

### Newspapers

**Reading Eagle**

345 Penn Street

Reading, PA 19603

Phone: (610) 371-5000

<https://www.readingeagle.com/>

**Berks Weekly**

237 Court Street, #312

Reading, PA 19601

Phone: (484) 525-0703

<https://berksweekly.com/>

### Television Stations

**WFMZ-TV 69 News**

<https://www.wfmz.com/>

**WTVE 51**

<https://www.rnntv.com/wtve/>

**WPVI-TV 6 ABC**

<https://6abc.com/>

**Berks Community Television**

<https://www.bctv.org/>

### Radio Stations

**WEEU 830 AM**

<https://www.830weeu.com/>

**WXPB Radio**

<https://xpb.org/>

## Appendix F - Information Repositories

---

When EPA proposes a site cleanup plan, it collects the documents that were used or relied upon to develop the proposed action. This collection of technical documents is called the Administrative Record. The Administrative Record is available online and at the information repositories. The following information repositories have been established for the Reading Drum Emergency Response:

### Local Repository

**Reading Public Library**

100 S 5th Street  
Reading, PA 19602

*Phone: (610) 655-6350*

### EPA Office

**U.S. EPA Region 3**

Public Reading Room  
1600 JFK Blvd.  
Philadelphia, PA 19103

*Phone: (215) 814-5122*

### Online - Administrative Record

<https://semspub.epa.gov/src/collection/03/AR67554>

## Appendix G - Sample Interview Questions

---

### General Information

1. Are you aware of the Reading Drum Emergency Response?
2. (For residents) How long have you lived in this community?
3. (For officials) Do you live in the area affected by the site?
4. When/how did you first learn about the site?
5. What have you heard about the site?
6. What/who is the source of this information?
7. Do you think this information is credible?
8. Who do consider reliable sources of information about local environmental issues?
9. Are there environmental concerns in the community, other than this site?
10. Who are the major employers in this area?
11. Did you or others in the community take any actions to focus attention on conditions at the site? If so, what were your concerns or goals?
12. Did you or anyone you know work at the site when it was operating or play at the site after it closed?
13. Since the site ceased operations, do you know if it is used for recreational purposes or if trespassing is an issue?
14. What are your current concerns about the site?

### Community Involvement Information

1. Do you think community members would be interested in forming a Community Liaison Panel to follow the work at the site and help keep the community-at-large informed?
2. Would you be interested in forming such a group?
3. Do you know others who might be interested in such a group?
4. Do you know of any environmental or special interest groups, such as sportsmen's groups, that may be interested in participating in a group or being kept informed of site-related activities?

### Keeping Residents Informed

1. What are the best ways for us to communicate with you? (Mailings, Email, Meetings/Information Sessions, Public Notices, etc.)
2. What kinds of information do you want?
3. How do you usually get information about the community or local environmental concerns?

4. Do you use the internet or other social media, such as Twitter or Facebook?
5. Do you know of any residents in the site vicinity who have communications differences, such as hearing or visual impairments?
6. Do you know of residents in the site vicinity who may require translation services?

#### **Planning Community Events**

1. If EPA wanted to hold a meeting or an open house, can you suggest any locations that are convenient for residents?
2. Are there any nights of the week that we should avoid when scheduling meetings?
3. Are there seasonal community activities that are important and widely attended?

## Appendix H - Public Notice

The public notice below was placed in the Reading Eagle on Saturday, December 16, 2023 .

# **EPA PUBLIC NOTICE**

## **Administrative Record Available for Public Review Reading Drum Fire**

The U.S. Environmental Protection Agency (EPA) announces the availability of the Administrative Record for cleanup activities at the old Lincoln Chemical Factory in Reading, Pennsylvania. EPA is helping to inventory and sort the chemicals that are in containers in the building so they can be disposed of safely. The Administrative Record contains documents about the cleanup which describe how public health and the environment are being protected.

**Site documents can be viewed online:**

<https://semspub.epa.gov/src/collection/03/AR67554>



**Have questions?**

Contact: Renata Thakurdial, EPA Community Involvement Coordinator

215-814-2745 or [thakurdial.renata@epa.gov](mailto:thakurdial.renata@epa.gov)



## Appendix I - Additional Websites & Resources

---

### **Reading Drum Emergency Response webpage**

<https://response.epa.gov/ReadingDrum>

### **Reading Drum Story Map**

<https://arcg.is/1m4LCX1>

### **Reading Drum Mapa histórico**

<https://storymaps.arcgis.com/stories/23b0342e9fe24f3da9c15cb868b3d799>

### **EPA's Superfund Program**

<https://www.epa.gov/superfund>

### **Superfund Community Involvement**

<https://www.epa.gov/superfund/superfund-community-involvement>

### **This is Superfund: A Community Guide to EPA's Superfund Program**

<http://semspub.epa.gov/src/document/HQ/175197>