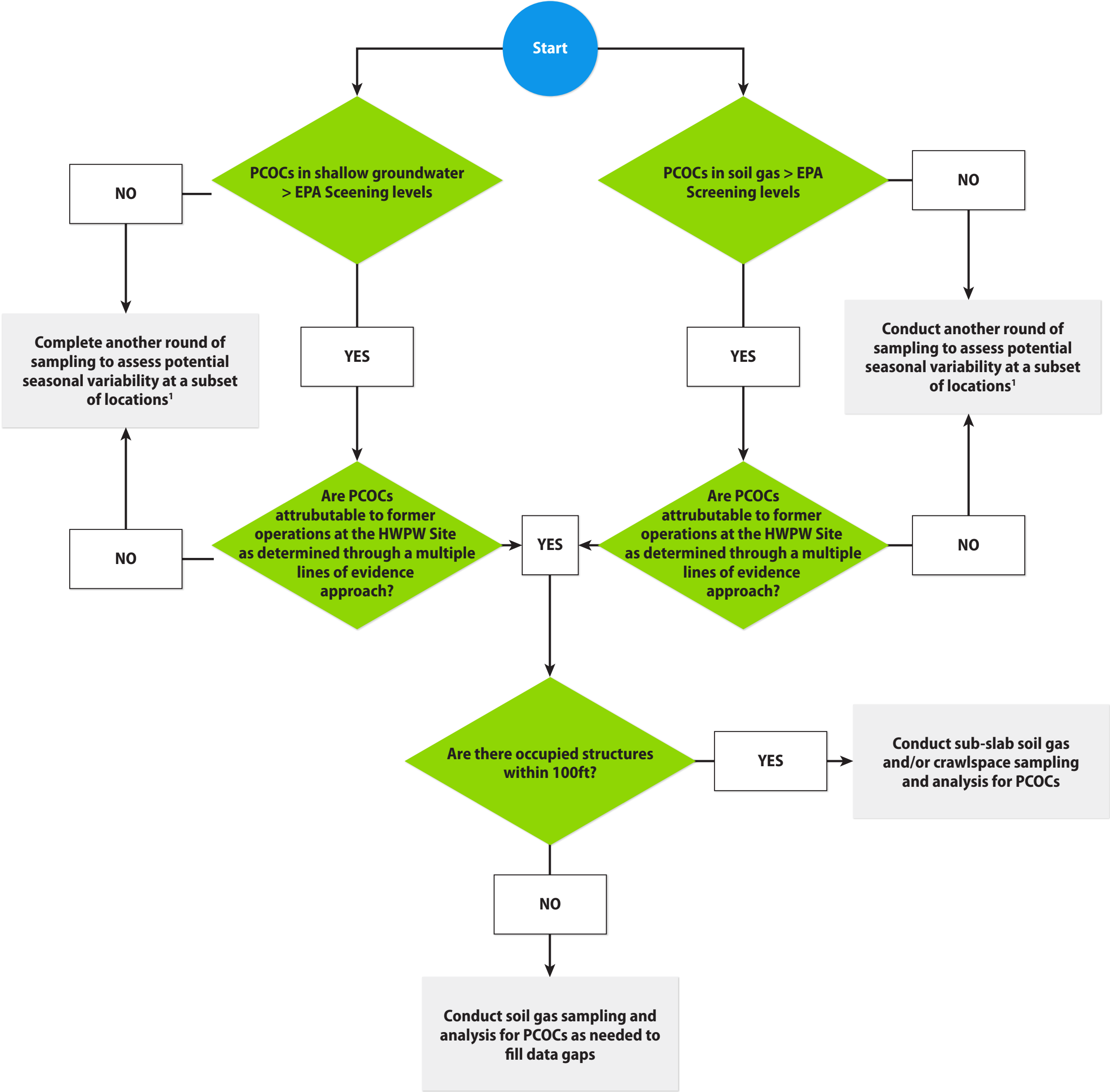
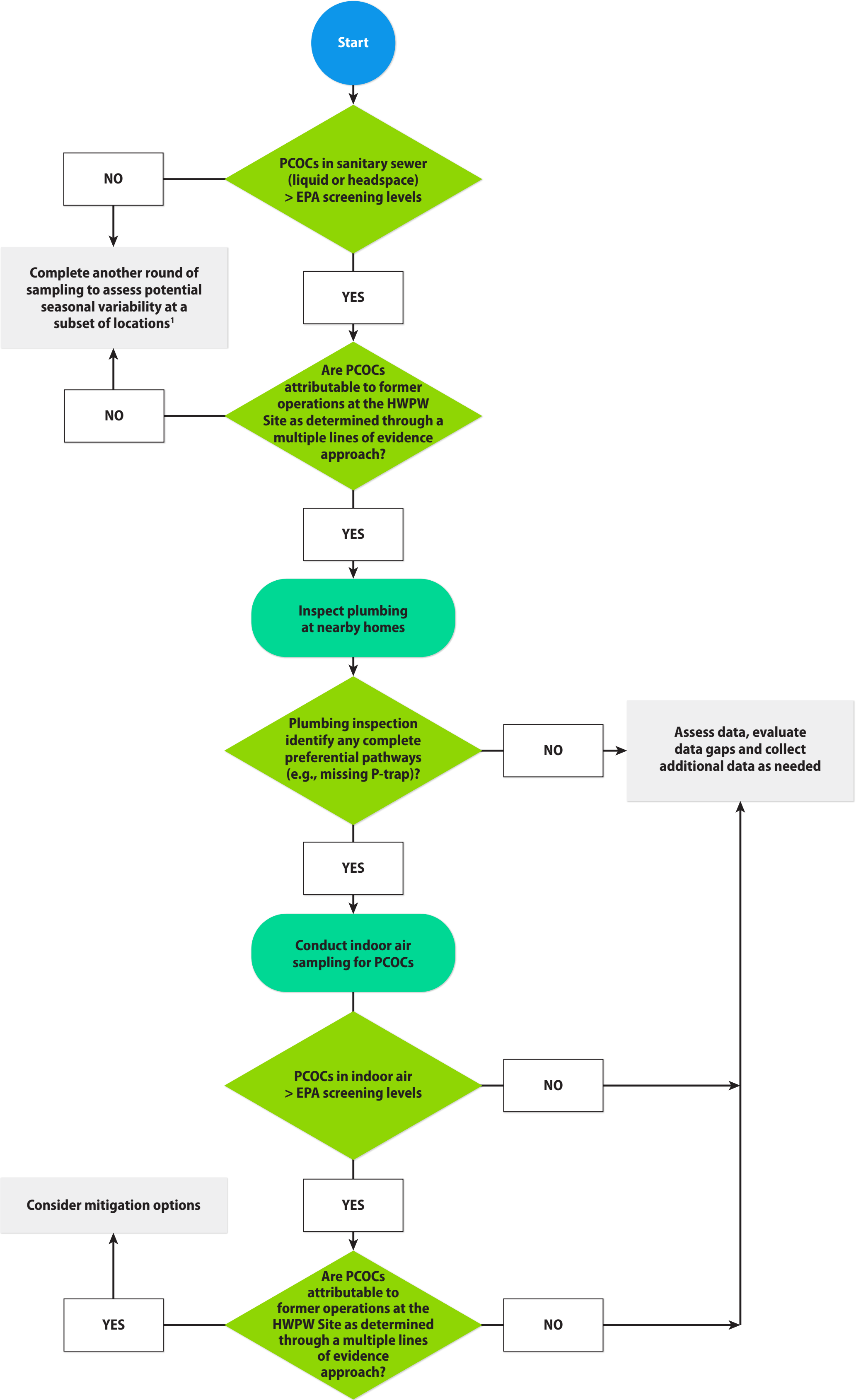


# EPA APPROVED VAPOR INTRUSION INVESTIGATION DECISION TREES

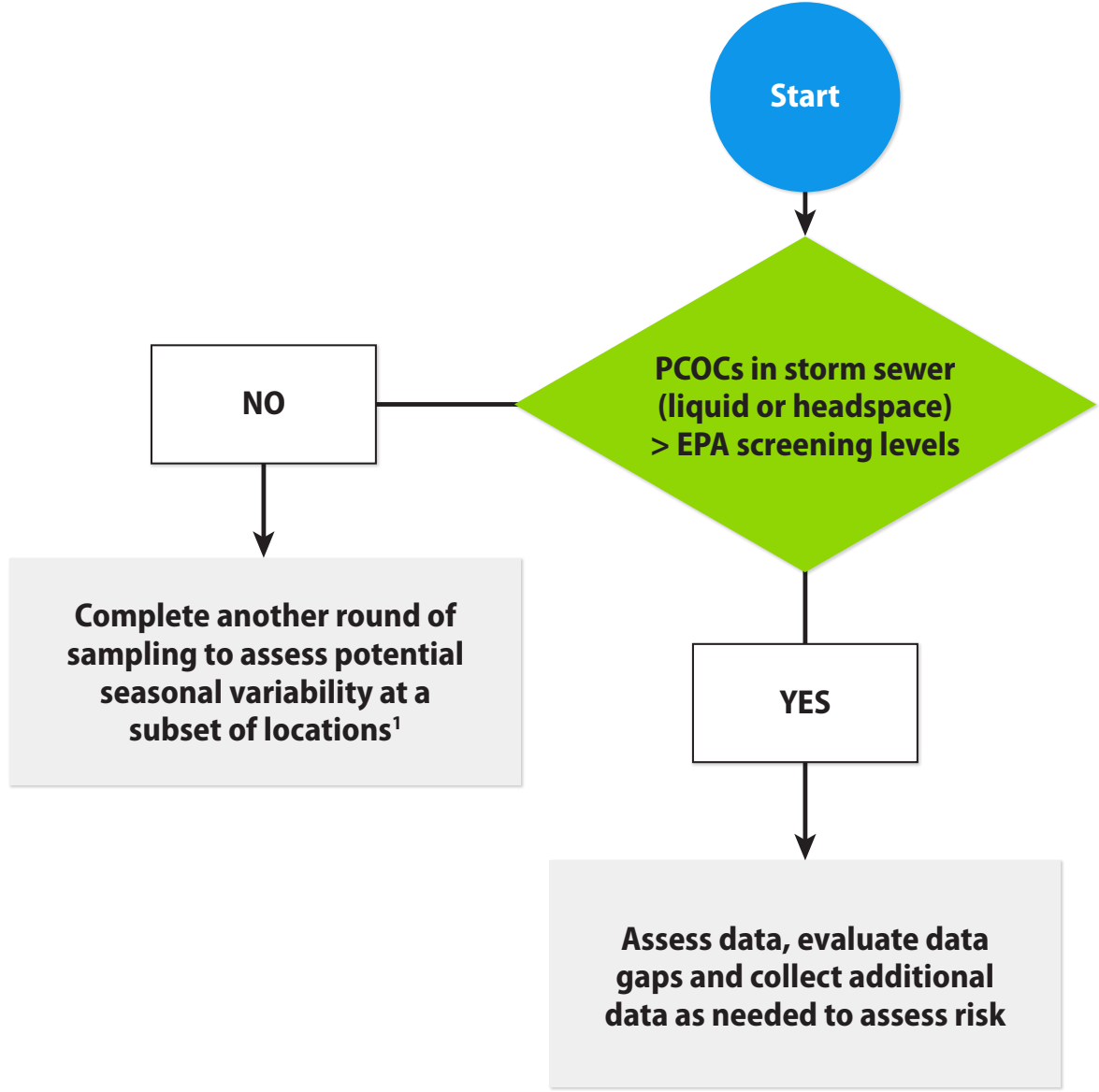
## SHALLOW GROUNDWATER AND SOIL GAS DECISION TREE



## SANITARY SEWER DECISION TREE



## STORM SEWER DECISION TREE



Notes:  
1 - Monitoring locations along Liberty Road and the east and west monitoring locations will be sampled at least twice.  
Final EPA Approved Field Sampling Plan – Vapor Intrusion Investigation  
UPRR Former Houston Wood Preserving Works Site  
August 2023

