

**REMOVAL PROGRAM
PRELIMINARY ASSESSMENT/
SITE INVESTIGATION REPORT
FOR THE
WAMPUS MILFORD ASSOCIATES SITE
MILFORD, NEW HAVEN COUNTY, CONNECTICUT
19 AND 20 DECEMBER 2006**

Prepared For:

U.S. Environmental Protection Agency
Region I
Emergency Planning and Response Branch
1 Congress Street, Suite 1100
Boston, MA 02114-2023

CONTRACT NO. EP-W-05-042

TDD NO. 01-06-11-0002

TASK NO. 0259

DC NO. R-4537

Submitted By:

Weston Solutions, Inc.
Region I
Superfund Technical Assessment and Response Team III (START)
3 Riverside Drive
Andover, MA 01810

February 2007

TABLE OF CONTENTS

- I. Preliminary Assessment/Site Investigation Forms
- II. Narrative Chronology
- III. Appendices
 - Appendix A - Figures
 - Appendix B - Photodocumentation Log
 - Appendix C - Chain-of-Custody Records
 - Appendix D - Analytical Summary Tables
 - Appendix E - Analytical Results Tables

I. Preliminary Assessment/Site Investigation Forms

REMOVAL PRELIMINARY ASSESSMENT

Physical Site Characterization (Continued)

500 feet from residential properties, and exposure to children and trespassers by contamination present is possible. In addition, drainage from the swale flows to Stubby Plain Brook, which discharges to the Indian River and ultimately Long Island Sound. Fluid flow through the swale may direct contaminated runoff water to the Stubby Plain Brook and subsequent downstream locations.

The site was formerly owned and operated by the Burndy Corporation, beginning in 1956, for the manufacture of electrical components and accessories. Operations included rubber and plastic molding, operation of power presses, screw machining, degreasing, plating, wastewater treatment, soldering, assembly, and shipping. Metal hydroxide sludges from the treatment of wastes generated by electroplating were accumulated in two on-site surface impoundments and disposed of in an on-site landfill. These and other areas of concern on Lot 1 continue to be addressed by the property owner under the direct oversight of the Connecticut Department of Environmental Protection (CTDEP).

All outstanding stock of the Burndy Corporation was purchased by Framatome Connectors International in 1989. In 1993, all operations at the facility ceased. In 1995, the company name was changed from the Burndy Corporation to Framatome Connectors USA. In 1999, ownership of the site was subsequently transferred to the partners of the Wampus Milford Association (WMA). The site is currently owned by Mr. Ed Lapidus, who was one of the original partners of WMA.

A 1998 site investigation conducted by HRP Associates (HRP) on behalf of Framatome Connectors USA revealed that the drainage swale sediments contained elevated levels of metals exceeding Connecticut Remediation Standard Regulations (RSR) Industrial/Commercial (I/C) Direct Exposure Criteria (DEC). These metals include, but are not limited to, lead [detected at a maximum concentration of 11,400 milligrams per kilogram (mg/kg) at sample location SD-11, exceeding CT RSR I/C DEC of 1,000 mg/kg] and cadmium (detected at a maximum concentration of 1,340 mg/kg at sample location SD-25, exceeding CT RSR I/C DEC of 1,000 mg/kg). A copy of the 1998 HRP investigation report including a figure showing the 1998 sampling locations was not available for use by START.

CTDEP has been the lead agency overseeing investigation and remediation activities at the site. CTDEP had contacted the EPA Resource Conservation and Recovery Act (RCRA) Corrective Action Section due to the lack of response by WMA to CTDEP's request that the remediation of the drainage swale on Lot 2 be conducted. During Fall 2004, the EPA Emergency Planning and Response Branch (EPRB) was requested by EPA's RCRA Corrective Action Section to conduct a Preliminary Assessment/Site Investigation (PA/SI) at the site. On 23 November 2004, EPA issued a Request for Access to Property to WMA for the purposes of performing a PA/SI.

On 2 December 2004, WMA's environmental attorney notified EPA that one of the partners of WMA was in the process of purchasing the 80 Wampus Lane property from his partners and had placed funds in escrow to support environmental work at the property. Based on these developments, a request was made for EPA to withdraw the Request for Access to allow WMA to remediate the swale. Following a December 2004 conference call with WMA's attorney and consultants and receipt of a 3 January 2005 schedule for investigation and remediation of the swale, EPA responded with a letter dated 13 January 2005 that withdrew the 23 November 2004 Request

Physical Site Characterization (Concluded)

REMOVAL PRELIMINARY ASSESSMENT

for Access and outlined EPA's expectations for the work that would be performed by WMA. In that letter, EPA requested that the remediation of the drainage swale be completed by 30 June 2005.

During Spring 2005, a site investigation was conducted by Environmental Resources Management, Inc. (ERM) on behalf of WMA. At the time of the writing of this report, no formal report was available on the results of the 2005 investigation.

On 2 August 2006, WMA sent a letter to EPA stating that WMA did not have any additional funds to complete a cleanup of the drainage swale. As a result, on 12 October 2006, EPA's RCRA Corrective Action section requested that the EPA EPRB perform a PA/SI of the drainage swale at the site.

Description of Substances Possibly Present, Known or Alleged: A 1998 site investigation conducted by HRP on behalf of Framatome Connectors USA revealed that the drainage swale soils contained elevated levels of metals: lead (maximum concentration 11,400 mg/kg, detected at sample location SD-11) and cadmium (maximum concentration of 1,340 mg/kg, detected at sample location SD-25).

Existing Analytical Data

() **Real-Time Monitoring Data:**

(X) **Sampling Data:** *Work Plan for 80 Wampus Lane*, prepared by ERM-New England, Inc., March 2005, which included the 1998 data collected by HRP.

Potential Threat

Description of potential hazards to environment and/or population-identify any of the criteria for a Removal Action (from NCP) that may be met by the site under 40 CFR 300.415 [b] [2].

- i. Actual or potential exposure to nearby human populations, animals, or the food chain from hazardous substances, pollutants or contaminants.
- ii. Actual or potential contamination of drinking water supplies or sensitive ecosystems.
- iii. Hazardous substances or pollutants or contaminants in drums, barrels, tanks, or other bulk storage containers, that may pose a threat of release.
- iv. High levels of hazardous substances or pollutants or contaminants in soils largely at or near the surface, that may migrate.
- v. Weather conditions that may cause hazardous substances or pollutants or contaminants to migrate or be released.
- vi. Threat of fire or explosion.

Potential Threat (Concluded)

REMOVAL PRELIMINARY ASSESSMENT

- vii. The availability of other appropriate federal or state response mechanisms to respond to the release.
- viii. Other situations or factors that may pose threats to public health or welfare or the environment.

Prior Response Activities

PRP STATE FEDERAL OTHER

Brief Description: The Potentially Responsible Party (PRP) collected samples from the drainage swale and surrounding soils in 1998 and 2005.

Priority for Site Investigation

High Medium Low None

Comments:

Report Generation

Originator:	Alysha Lynch	Date:	26 February 2007
Affiliation:	Weston Solutions, Inc. (START)	Telephone:	(978) 552-2115
TDD No.:	01-06-11-0002	Task No.:	0259-00



**EPA REGION I
REMOVAL SITE INVESTIGATION**

Inspection Information

Site Name: Wampus Milford Associates **Address:** 80 Wampus Lane
Town: Milford **County:** New Haven **State:** Connecticut (CT)
Date of Inspection: 19 December 2006 **Time of Inspection:** 1100 hours (hrs) to 1700 hrs
Weather Conditions: Sunny, 50 ° Fahrenheit
Date of Inspection: 20 December 2006 **Time of Inspection:** 0700 hrs to 1300 hrs
Weather Conditions: Sunny, 50 ° Fahrenheit
Site Status at Time of Inspection: **ACTIVE** **INACTIVE**
Comments:

Agencies/Personnel Performing Inspection

	<u>Names</u>	<u>Program</u>
(X) EPA:	Melanie Morash	U.S. Environmental Protection Agency (EPA) Region I Emergency Planning and Response Branch (EPRB) On-Scene Coordinator (OSC).
(X) EPA Contractor:	Alysha Lynch Mark Hall John Burton Aaron Benoit	Weston Solutions, Inc., (WESTON), Superfund Technical Assessment and Response Team III (START).
() State:		
() Other:		
Current Owner Based on Field Interview: Ed Lapidus		

Physical Site Characteristics

Parameter	Quantities/Extent
() Cylinders:	
() Drums:	

REMOVAL SITE INVESTIGATION

Physical Site Characteristics (Concluded)

Parameter	Quantities/Extent
(X) Lagoons:	A drainage swale approximately 210 feet long by 12 feet wide that reportedly received treated wastewater was observed on site.
() Tanks:	
() Above:	
() Below:	
() Asbestos:	
() Piles:	
() Stained Soil:	
(X) Sheens:	There were visible sheens in various areas of the drainage swale.
() Stressed Vegetation:	
() Landfill:	
(X) Population in Vicinity:	Access to the site is currently unrestricted to both pedestrian and vehicular traffic. The drainage swale and surrounding soils are located approximately 1,000 feet from a school and approximately 500 feet from residential properties.
() Wells:	
() Drinking:	
() Monitoring:	
() Other:	

Physical Site Observations

The focus of this investigation was the drainage swale that is located to the north of the developed areas on the 80 Wampus Lane property. The drainage swale is approximately 210 feet long and approximately 12 feet wide, and water flowing in the swale empties into the Stubby Plain Brook at its northeastern boundary. The drainage swale is located in an overgrown vegetated area and was delineated using high-visibility fencing that was installed by the property owner.

Field Sampling and Analysis

Matrix/Analytical Parameter	Field Instrumentation				
	CGI/O₂	RAD	PID	FID	Other
Background Readings:	0.0/21.1%	11µR/hr	0.0 ppm	0.0 ppm	
Air:					
Soil:	0.0/21.1%	11µR/hr	0.0 ppm	0.0 ppm	
Surface:	0.0/21.1%	11µR/hr	0.0 ppm	0.0 ppm	
Water:	0.0/21.1%	11µR/hr	0.0 ppm	0.0 ppm	
Tanks:					

REMOVAL SITE INVESTIGATION

Field Sampling and Analysis (Concluded)

Matrix/Analytical Parameter	Field Instrumentation				
	CGI/O ₂	RAD	PID	FID	Other
Background Readings:	0.0/21.1%	11µR/hr	0.0 ppm	0.0 ppm	
Drums:					
Vats:					
Lagoons:					
Spillage:					
Run Off:					
Piles:					
Sediments:	0.0/21.1%	11µR/hr	0.0 ppm	0.0 ppm	
Groundwater:					
Other:					

Field Quality Control Procedures

() SOP Followed

(X) Deviation From SOP

Comments: START sampling activities followed the protocol outlined in the document entitled, *Sampling and Analysis Plan (SAP) for the Wampus Milford Associates Site, Milford, New Haven County, Connecticut*, December 2006. However, only nine subsurface sample locations were sampled instead of 10, due to refusal encountered at location SB-06.

Description of Sampling Conducted

On 19 December 2006, OSC Melanie Morash and START members Alysha Lynch, Mark Hall, and John Burton mobilized to the Wampus Milford Associates site, located in Milford, New Haven County, Connecticut, to conduct surface soil, subsurface soil, and sediment sampling activities. START personnel established a support zone and calibrated air monitoring instruments, including a combination photoionization detector (PID)/flame ionization detector (FID), a combustible gas indicator/oxygen meter (CGI/O₂), and a radiation meter (MicroR). Background levels were recorded in the Health and Safety Plan (HASP) as follows: PID = 0.0 units; FID = 0.0 units; lower explosive limit (LEL) = 0%; oxygen (O₂) = 21.1%; and MicroR = 11 microRoentgens per hour (µR/hr). START member Lynch conducted a safety and operations meeting, and on-site personnel reviewed and signed the site Health and Safety Plan (HASP). The HASP was prepared as a separate document, entitled *Weston Solutions Inc., Region I START Site Health and Safety Plan (HASP) for the Wampus Milford Associates Site, 80 Wampus Street, Milford, Connecticut*, dated December 2006.

START members Lynch, Hall, and Burton began establishing surface soil sample locations as referenced in the December 2002 EPA guidance document entitled, *Guidance on Choosing a Sampling Design for Environmental Data Collection EPA QA/G-5S*.

REMOVAL SITE INVESTIGATION

Description of Sampling Conducted (Continued)

This guidance document was used at the request of the OSC. The PA/SI consisted of systematic sampling to ensure that a target population was fully and uniformly represented in a set of n samples collected (where n would be approximately 50 for surface samples and 10 for subsurface samples). The initial surface sampling locations were consistent with the known likely release scenario for the area of concern, at the head of the 210-foot-long man-made earthen drainage swale into which a former operator of the facility reportedly received treated plating wastewater and stormwater run-off between 1965 and 1991. The swale channeled this flow downstream to the Stubby Plain Brook, a tributary of the Indian River. START established transects along the drainage swale approximately 20 feet apart. The sample spacing along each transect was determined by the width of the drainage swale, with one grab sample collected from the floor, one grab sample collected from each of the walls, and one grab sample collected at an equidistance from the wall samples at the surface of the embankment along the drainage swale. Where the drainage swale narrowed to less than approximately 12 inches in width, the grab samples collected from each of the walls of the swale were omitted as directed by the OSC. At the completion of the establishment of the sample locations in accordance with the systematic sampling, 63 surface sample locations were determined, where three of the surface locations were field duplicates co-located with existing sample locations. The locations were labeled SS-00 through SS-62, where SS-60 through SS-62 were the field duplicates.

On 20 December 2006, OSC Morash and START members Lynch, Hall, Burton, and Aaron Benoit arrived on site to complete sampling activities. OSC Morash and START member Benoit established the sample locations for subsurface soil sampling. OSC Morash selected three transects to complete the depth sampling, omitting the center line location from each transect due to the difficulty of obtaining subsurface samples from the fully saturated soils along the center line of the swale. The three transects were spaced approximately 75 feet from the previous transect designated for depth sampling. Depth samples were collected from 1-, 2-, and 3-feet below ground surface (bgs) where possible. The locations were labeled SB-01 through SB-11, where SB-11 was the field duplicate. SB-06 was not collected due to refusal at 0-3 inches bgs.

START members Hall and Burton collected three sediment samples from the Stubby Plain Brook adjacent to the confluence of the Stubby Plain Brook and the drainage swale. At the completion of sampling activities, the site and selected sample locations were photodocumented by START member Hall. START member Benoit mapped the area of the drainage swale by collecting geographic coordinates from the swale perimeter using a Trimble Global Positioning System (GPS) unit.

The 63 surface soil samples, 17 subsurface soil samples, and three sediment samples were collected for metals, hexavalent chromium, and polycyclic aromatic hydrocarbons (PAH) analysis. Additionally, the surface soil samples that were located in the center line of the drainage swale were analyzed for polychlorinated biphenyls (PCBs) and total petroleum hydrocarbons (TPH). All samples were sent to EPA Office of Environmental Measurement and

REMOVAL SITE INVESTIGATION

Description of Sampling Conducted (Concluded)

Evaluation (OEME) New England Regional Laboratory (NERL) located in North Chelmsford, Massachusetts for analysis. Hexavalent chromium analysis was performed by an EPA-subcontracted laboratory (Alpha Analytical Laboratories, Westborough, MA).

Analyses

Analytical Parameter	Media	Laboratory
<input type="checkbox"/> VOC	<input type="checkbox"/> AIR	<input checked="" type="checkbox"/> OEME
<input checked="" type="checkbox"/> PCB*	<input type="checkbox"/> WATER	<input type="checkbox"/> CLP
<input type="checkbox"/> PESTICIDE	<input checked="" type="checkbox"/> SOIL	<input checked="" type="checkbox"/> PRIVATE ¹
<input checked="" type="checkbox"/> METALS	<input type="checkbox"/> SOURCE	<input type="checkbox"/> SAS
<input type="checkbox"/> CYANIDE	<input checked="" type="checkbox"/> SEDIMENT	<input type="checkbox"/> SOW
<input type="checkbox"/> SVOC		<input type="checkbox"/> FIELD
<input type="checkbox"/> TOXICITY		
<input type="checkbox"/> DIOXIN		
<input type="checkbox"/> ASBESTOS		
<input checked="" type="checkbox"/> OTHER: PAH, TPH*		

Analytical results: see Appendices D and E – Analytical Summary Tables and Analytical Results Tables.

* PCB and TPH analyses were only performed on samples collected from the center line of the drainage swale.

¹ Hexavalent chromium analysis for soil and sediment samples was performed by an EPA-subcontracted laboratory (Alpha Analytical Laboratories, Westborough, MA).

Receptors

Comments

- Drinking Water Private:
 Municipal:
 Groundwater:
 Unrestricted Access:
 Population in Proximity:

There are no fences to fully restrict access to the site. Access to the site is currently unrestricted to both pedestrian and vehicular traffic. The drainage swale and surrounding soils are located approximately 1,000 feet from a school and approximately 500 feet from residential properties, and exposure to children and trespassers is possible. The property is currently being leased to Trans-Lite, Inc., a shipping company, and workers were observed on the property during the Removal Site Investigation.

REMOVAL SITE INVESTIGATION

Receptors (Concluded)

- (X) Sensitive Ecosystem:** The drainage swale discharges to Stubby Plain Brook, a tributary of the Indian River, which flows into Long Island Sound.
- () Other:**

Additional Procedures for Site Determination

- () Biological Evaluation () ATSDR (X) Not applicable at this time**

Site Determination

Depending on further information, criteria that may be met by the site include 40 CFR 300.415 [b] [2], parts:

- i. Actual or potential exposure to nearby human populations, animals, or the food chain from hazardous substances, pollutants or contaminants.
- ii. Actual or potential contamination of drinking water supplies or sensitive ecosystems.
- iii. Hazardous substances or pollutants or contaminants in drums, barrels, tanks, or other bulk storage containers, that may pose a threat of release.
- iv. High levels of hazardous substances or pollutants or contaminants in soils largely at or near the surface, that may migrate.
- v. Weather conditions that may cause hazardous substances or pollutants or contaminants to migrate or be released.
- vi. Threat of fire or explosion.
- vii. The availability of other appropriate federal or state response mechanisms to respond to the release.
- viii. Other situations or factors that may pose threats to public health or welfare or the environment.

REMOVAL SITE INVESTIGATION

Report Generation

Originator:	Alysha Lynch	Date:	7 February 2007
Affiliation:	Weston Solutions, Inc. (START)	Telephone:	(978) 552-2115
TDD No.:	01-06-11-0002	Task No.:	0259-00

II. Narrative Chronology

Narrative Chronology

Site Description

The Wampus Milford Associates site (the site) is a 24-acre parcel located at 80 Wampus Lane in Milford, New Haven County, Connecticut [see Appendix A – Figures: Site Location Map (Figure 1)]. The geographic coordinates for the site are latitude 41° 13' 28.0" North and longitude 73° 2' 45.6" West. The site consists of two lots, Lot 1 and Lot 2, as well as one on-site building [see Appendix A – Figures: Site Diagram (Figure 2)]. There is a man-made, earthen drainage swale on Lot 2. The drainage swale is approximately 210 feet long by 12 feet wide, with a ponding area and weir, and reportedly received treated plating wastewater and stormwater run-off between 1965 and 1991. The swale channeled flow to the Stubby Plain Brook, a tributary of the Indian River. Previous site investigations of the drainage swale and surrounding soils conducted by the current and former property owners indicated that there were elevated concentrations of certain contaminants, including, but not limited to, cadmium, copper, beryllium, and polycyclic aromatic hydrocarbons (PAHs).

Access to the site is currently unrestricted to both pedestrian and vehicular traffic. The drainage swale and surrounding soils are located approximately 1,000 feet from a school and approximately 500 feet from residential properties, and exposure to children and trespassers is possible. In addition, drainage from the swale flows to Stubby Plain Brook, which discharges to the Indian River and ultimately Long Island Sound.

Site History

The site was formerly owned and operated by the Burndy Corporation, beginning in 1956, for the manufacture of electrical components and accessories. Operations included rubber and plastic molding, operation of power presses, screw machining, degreasing, plating, wastewater treatment, soldering, assembly, and shipping. Metal hydroxide sludges from the treatment of wastes generated by electroplating were accumulated in two on-site surface impoundments and disposed of in an on-site landfill. These and other areas of concern on Lot 1 continue to be addressed by the property owner under the direct oversight of the Connecticut Department of Environmental Protection (CTDEP).

All outstanding stock of the Burndy Corporation was purchased by Framatome Connectors International in 1989. In 1993, all operations at the facility ceased. In 1995, the company name was changed from the Burndy Corporation to Framatome Connectors USA. In 1999, ownership of the site was subsequently transferred to the partners of the Wampus Milford Association (WMA). The site is currently owned by Mr. Ed Lapidus, who was one of the original partners of WMA.

A 1998 site investigation conducted by HRP Associates (HRP) on behalf of Framatome Connectors USA revealed that the drainage swale sediments contained elevated levels of metals. These metals include, but are not limited to, lead [detected at a maximum concentration of 11,400 milligrams per kilogram (mg/kg) at sample location SD-11, exceeding Connecticut (CT) Remediation Standard Regulations (RSR) Industrial/Commercial (I/C) Direct Exposure Criteria (DEC) of 1,000 mg/kg] and cadmium (detected at a maximum concentration of 1,340 mg/kg at sample location SD-25, exceeding CT RSR I/C DEC of 1,000 mg/kg). A copy of the 1998 HRP

investigation report including a figure showing the 1998 sampling locations was not available for use by START.

CTDEP has been the lead agency overseeing investigation and remediation activities at the site. CTDEP had contacted the EPA Resource Conservation and Recovery Act (RCRA) Corrective Action Section due to the lack of response by WMA to CTDEP's request that the remediation of the drainage swale on Lot 2 be conducted. During Fall 2004, the EPA Emergency Planning and Response Branch (EPRB) was requested by EPA's RCRA Corrective Action Section to conduct a Preliminary Assessment/Site Investigation (PA/SI) at the site. On 23 November 2004, EPA issued a Request for Access to Property to WMA for the purposes of performing a PA/SI.

On 2 December 2004, WMA's environmental attorney notified EPA that one of the partners of WMA was in the process of purchasing the 80 Wampus Lane property from his partners and had placed funds in escrow to support environmental work at the property. Based on these developments, a request was made for EPA to withdraw the Request for Access to allow WMA to remediate the swale. Following a December 2004 conference call with WMA's attorney and consultants and receipt of a 3 January 2005 schedule for investigation and remediation of the swale, EPA responded with a letter dated 13 January 2005 that withdrew the 23 November 2004 Request for Access and outlined EPA's expectations for the work that would be performed by WMA. In that letter, EPA requested that the remediation of the drainage swale be completed by 30 June 2005.

During Spring 2005, a site investigation was conducted by Environmental Resources Management, Inc. (ERM) on behalf of WMA. At the time of the writing of this report, no formal report was available on the results of the 2005 investigation.

On 2 August 2006, WMA sent a letter to EPA stating that WMA did not have any additional funds to complete a cleanup of the drainage swale. As a result, on 12 October 2006, EPA's RCRA Corrective Action section requested that the EPA EPRB perform a PA/SI of the drainage swale at the site.

Site Activities

On 19 December 2006, OSC Melanie Morash and START members Alysha Lynch, Mark Hall, and John Burton mobilized to the site to conduct surface soil, subsurface soil, and sediment sampling activities. START personnel established a support zone and calibrated air monitoring instruments, including a combination photoionization detector (PID)/flame ionization detector (FID), a combustible gas indicator/oxygen meter (CGI/O₂), and a radiation meter (MicroR). Background levels were recorded in the Health and Safety Plan (HASP) as follows: PID = 0.0 units; FID = 0.0 units; lower explosive limit (LEL) = 0%; oxygen (O₂) = 21.1%; and MicroR = 11 microRoentgens per hour (μR/hr). START member Lynch conducted a safety and operations meeting, and on-site personnel reviewed and signed the site Health and Safety Plan (HASP). The HASP was prepared as a separate document, entitled *Weston Solutions Inc., Region I START Site Health and Safety Plan (HASP) for the Wampus Milford Associates Site, 80 Wampus Street, Milford, Connecticut*, dated December 2006. START member Lynch discussed the sampling activities with all personnel, and START sampling activities followed the protocol outlined in the document entitled, *Sampling and Analysis Plan (SAP) for the Wampus Milford Associates Site, Milford, New Haven County, Connecticut*, dated December 2006.

START members Lynch, Hall, and Burton began establishing surface soil sample locations as referenced in the December 2002 EPA guidance document entitled, Guidance on Choosing a Sampling Design for Environmental Data Collection EPA QA/G-5S. This guidance document was used at the request of the OSC. The PA/SI consisted of systematic sampling to ensure that a target population was fully and uniformly represented in a set of n samples collected (where n will be approximately 50 for surface samples and 10 for subsurface samples). The initial surface sampling locations were consistent with the known likely release scenario for the area of concern, at the head of the 210 foot long man-made earthen drainage swale which a former operator of the facility reported received treated plating wastewater and stormwater run-off between 1965 and 1991. The swale channeled this flow downstream to the Stubby Plain Brook, a tributary of the Indian River. START established transects along the drainage swale approximately 20-feet apart. The sample spacing along each transect was determined by the width of the drainage swale, with one grab sample collected from the floor, one grab sample collected from each of the walls, and one grab sample collected at an equidistance from the wall samples at the surface of the embankment along the drainage swale. Where the drainage swale narrowed to less than approximately 12 inches in width, the grab samples collected from each of the walls of the swale were omitted as directed by the OSC due to the difficulty of obtaining subsurface samples from the fully saturated soils along the center line of the swale. At the completion of the establishment of the sample locations in accordance to the systematic sampling, 63 surface sample locations were determined, where three of the surface locations were field duplicates co-located with existing sample locations. The locations were labeled SS-00 through SS-62, where SS-60 through SS-62 were the field duplicates [see Appendix A – Figures: Sample Location Map (Figure 3)].

On 20 December 2006, OSC Morash and START members Lynch, Hall, Burton, and Aaron Benoit arrived on site to complete sampling activities. OSC Morash and START member Benoit established the sample locations for subsurface soil sampling. OSC Morash selected three transects to complete the depth sampling, omitting the center line location from each transect. The three transects were spaced approximately 75 feet from the previous transect designated for depth sampling. Depth samples were collected from 1-, 2-, and 3-feet below ground surface (bgs) where possible. The locations were labeled SB-01 through SB-11, where SB-11 was the field duplicate. SB-06 was not collected due to refusal at 0-3 inches bgs.

START members Hall and Burton collected three sediment samples from the Stubby Plain Brook adjacent to the confluence of the Stubby Plain Brook and the drainage swale. At the completion of sampling activities, the site and selected sample locations were photodocumented by START member Hall (see Appendix B – Photodocumentation Log). START member Benoit mapped the area of the drainage swale by collecting geographic coordinates from the swale perimeter using a Trimble Global Positioning System (GPS) unit.

The 63 surface soil samples, 17 subsurface soil samples, and three sediment samples were collected for metals, hexavalent chromium, and PAH analyses. Additionally, surface soil samples (SS-01, SS-04, SS-08, SS-13, SS-18, SS-23, SS-28, SS-33, SS-38, SS-51, and SS-55) that were located along the center line of the drainage swale and surface soil samples (SS-44 and SS-48) that were collected along the wall of the drainage swale were analyzed for polychlorinated biphenyls (PCBs) and total petroleum hydrocarbons (TPH). All samples were sent to EPA Office of Environmental Measurement and Evaluation (OEME) New England

Regional Laboratory (NERL) located in North Chelmsford, Massachusetts for analysis (see Appendix C - Chain-of-Custody Records). Hexavalent chromium analyses were completed by an EPA-subcontracted laboratory (Alpha Analytical Laboratories, Westborough, MA). Analytical Summary Tables and Analytical Data Tables may be found in Appendices D and E, respectively.

Analytical Data Summaries

Total Petroleum Hydrocarbon and Polychlorinated Biphenyl Results

Thirteen surface soil samples that were located in the center line of the drainage swale and embankments of the drainage swale were submitted for TPH and PCB analyses. TPH was detected in 12 of these samples at concentrations ranging from 83 to 15,700 mg/kg. (See Appendix D – Table 1, *Summary of Total Petroleum Hydrocarbon Results, Surface Soil Samples.*) Surface soil sample locations are depicted in Figure 3 (see Appendix A: Figures – Figure 3, Sample Locations). The surface soil sample data were compared to the Connecticut Department of Environmental Protection (CT DEP), Direct Exposure Criteria for Soil, Industrial/Commercial Criteria (DEC I/CC). The concentration of TPH in one sample, SS-01 (15,700 mg/kg), exceeded the DEC I/CC of 2,500 mg/kg. (See Appendix D – Table 1, *Summary of Total Petroleum Hydrocarbon Results, Surface Soil Samples.*)

PCB Aroclor-1254 was detected in five of the surface soil samples at concentrations ranging from 0.16 mg/kg to 0.89 mg/kg; and PCB Aroclor-1242 was detected in one of the samples at a concentration of 1.1 mg/kg. None of the concentrations of PCBs detected in surface soil samples exceeded the DEC I/CC of 10 mg/kg. (See Appendix D – Table 2, *Summary of Polychlorinated Biphenyl Results, Surface Soil Samples.*)

Polycyclic Aromatic Hydrocarbon Results

Sixty-three surface soil samples, 17 subsurface soil samples, and three sediment samples were submitted for PAH analyses. PAHs were detected in 58 of the surface and subsurface soil samples; and none were detected in the sediment samples. Fifteen PAHs (maximum concentration in parentheses) were detected in the soil samples, including the following: acenaphthene [6,100 micrograms per kilogram ($\mu\text{g}/\text{kg}$)]; anthracene (13,000 $\mu\text{g}/\text{kg}$); benzo(a)anthracene (24,000 $\mu\text{g}/\text{kg}$); benzo(a)pyrene (21,000 $\mu\text{g}/\text{kg}$); benzo(b)fluoranthene (28,000 $\mu\text{g}/\text{kg}$); benzo(g,h,i)perylene (11,000 $\mu\text{g}/\text{kg}$); benzo(k)fluoranthene (7,600 $\mu\text{g}/\text{kg}$); chrysene (23,000 $\mu\text{g}/\text{kg}$); dibenz(a,h)anthracene (2,900 $\mu\text{g}/\text{kg}$); fluoranthene (66,000 $\mu\text{g}/\text{kg}$); fluorene (5,400 $\mu\text{g}/\text{kg}$); indeno(1,2,3-cd)pyrene (11,000 $\mu\text{g}/\text{kg}$); naphthalene (3,700 $\mu\text{g}/\text{kg}$); phenanthrene (52,000 $\mu\text{g}/\text{kg}$); and pyrene (56,000 $\mu\text{g}/\text{kg}$). (See Appendix D – Table 3, *Summary of Polycyclic Aromatic Hydrocarbon Results, Surface Soil, Subsurface Soil, and Sediment Samples.*) The maximum concentrations of these 15 PAHs were detected in surface soil sample SS-51, collected from the center line along the southern end of the drainage swale (see Appendix A: Figure – Figure 3, Sample Locations). Based on the PAH analytical results, 26 soil samples exceeded the DEC I/CC for benzo(a)pyrene, five exceeded the DEC I/CC for benzo(b)fluoranthene, and one exceeded the DEC I/CC for benzo(a)anthracene. (See Appendix D – Table 3, *Summary of Polycyclic Aromatic Hydrocarbon Results, Surface Soil, Subsurface Soil, and Sediment Samples.*)

Metals Results

Sixty-three surface soil samples, 17 subsurface soil samples, and three sediment samples were submitted for metals and hexavalent chromium analyses.

Seven metals (sample number and maximum concentration in parentheses) were detected in the soil samples, including the following: beryllium (SS-24; 6.2 mg/kg), cadmium (SS-18; 890 mg/kg), copper (SS-01; 18,000 mg/kg), lead (SS-18; 6,400 mg/kg), nickel (SS-38; 1,500 mg/kg), vanadium (SS-24; 250 mg/kg), and zinc (SS-01; 1,400 mg/kg). Based on the metals analytical results, four of the soil samples exceeded the DEC I/CC for beryllium, and five soil samples exceeded the DEC I/CC for lead. (See Appendix D – Table 4, *Summary of Metals Results, Surface Soil and Subsurface Soil Samples.*)

Five metals (sample number and maximum concentration in parentheses) were detected in the sediment samples, including the following: copper (SD-02; 30 mg/kg), lead (SD-01; 14 mg/kg), nickel (SD-01 and SD-03; 23 mg/kg), vanadium (SD-03; 72 mg/kg), and zinc (SD-01; 68 mg/kg). Based on the metals analytical results, two sediment samples exceeded the Consensus-Based Freshwater Sediment Benchmarks Threshold Effect Concentrations (TECs) for nickel. (See Appendix D – Table 5, *Summary of Metals Results, Sediment Samples.*)

Hexavalent chromium was not detected in any of the soil or sediment samples.

Summary of Exceedances

The following compounds/elements exceeded the DEC I/CC in one or more surface and/or subsurface soil samples: benzo(a)pyrene; benzo(b)fluoranthene; benzo(a)anthracene; beryllium; and lead. Nickel exceeded the Consensus-Based Freshwater Sediment Benchmarks TECs in two sediment samples collected from Stubby Plain Brook.

III. Appendices

Appendix A

Figures



Figure 1

SITE LOCATION MAP

**WAMPUS MILFORD ASSOCIATES
80 WAMPUS LANE
MILFORD, CONNECTICUT**

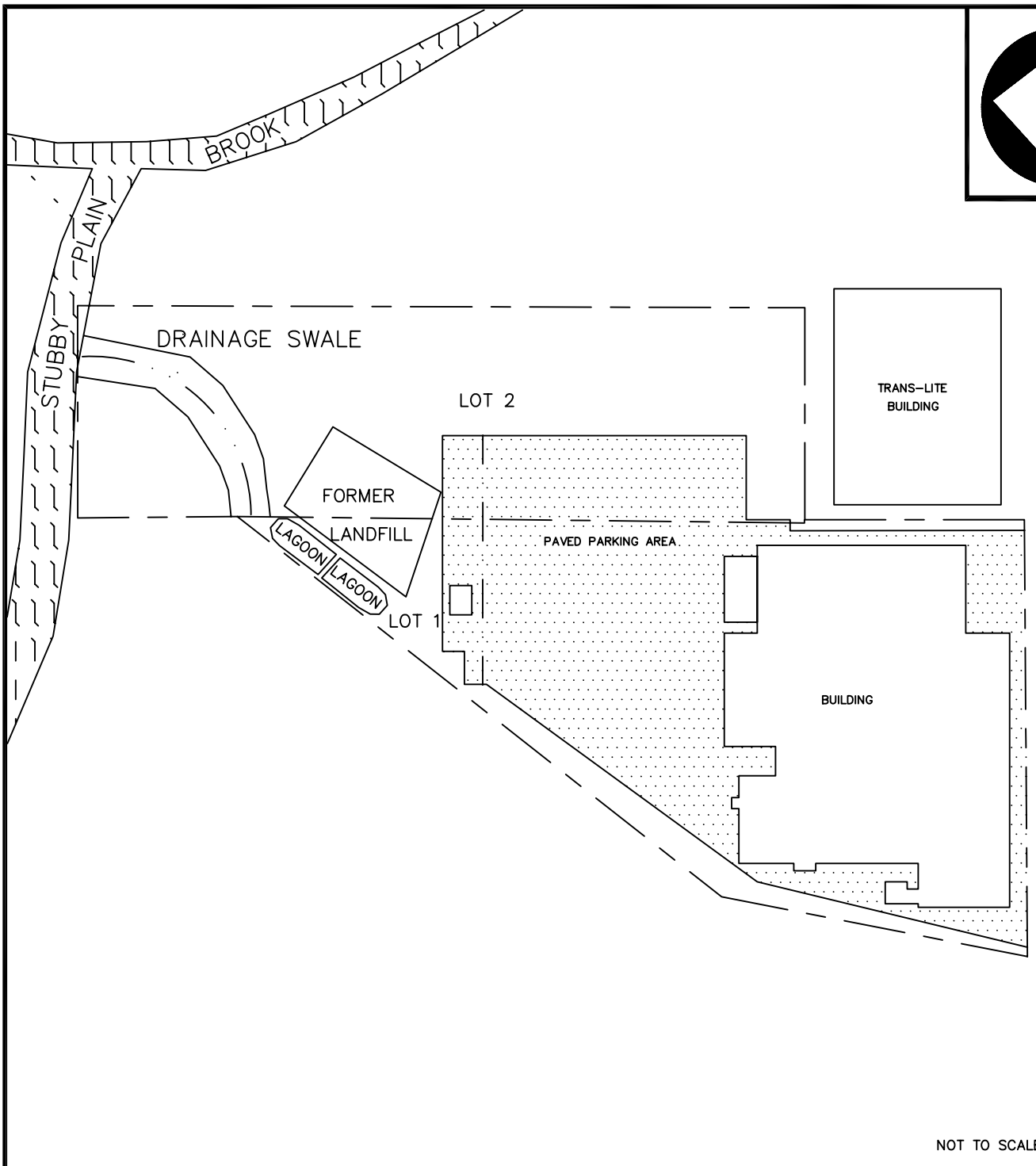
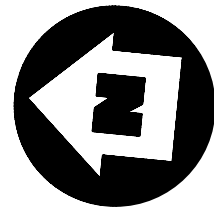
**EPA Region I
Superfund Technical Assessment and
Response Team (START) III
Contract No. EP-W-05-042**

TDD Number: 06-11-0002
Created by: A. LYNCH
Created on: 22 NOVEMBER 2006
Modified by: B. MACE
Modified on: 21 FEBRUARY 2007

Data Sources:

Topos: MicroPath/USGS
Quadrangle Name(s): Milford, Connecticut
All other data: START





NOT TO SCALE

LEGEND

- LOT BOUNDARIES
-  STUBBY PLAIN BROOK
- - - DRAINAGE SWALE
-  GROUNDWATER FLOW DIRECTION
-  PAVED AREA

SITE DIAGRAM

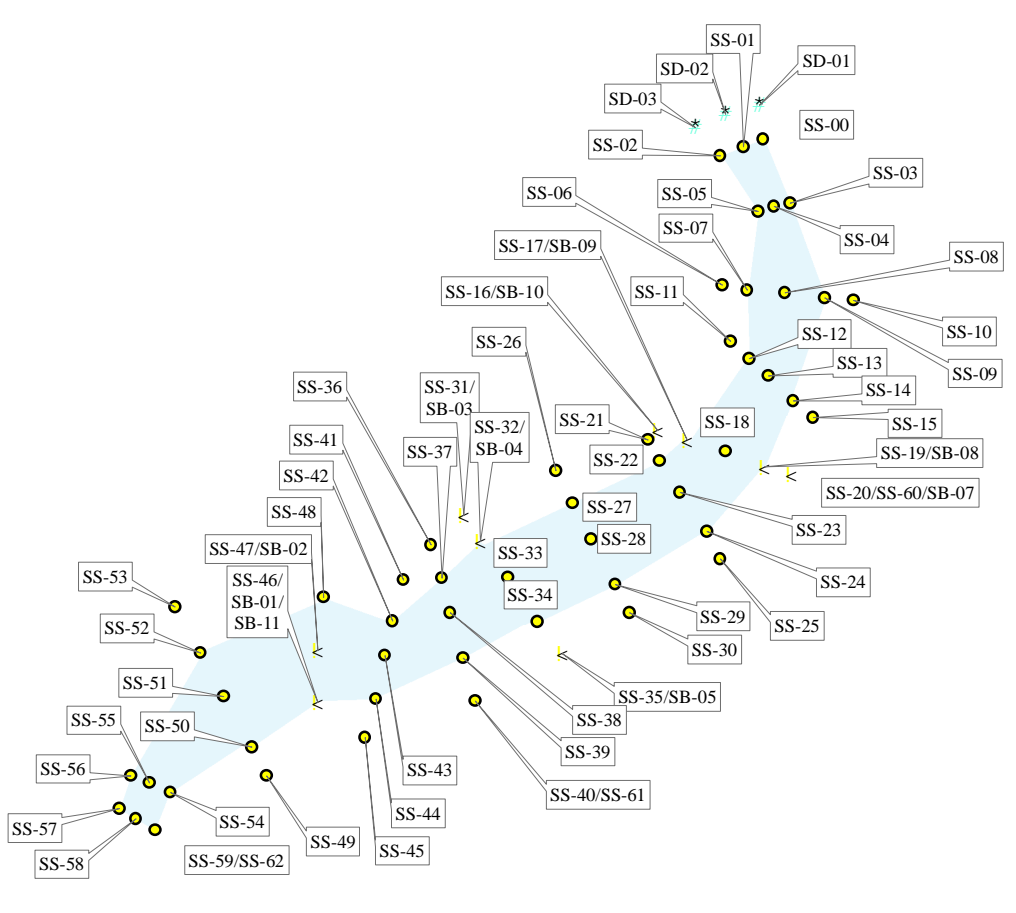
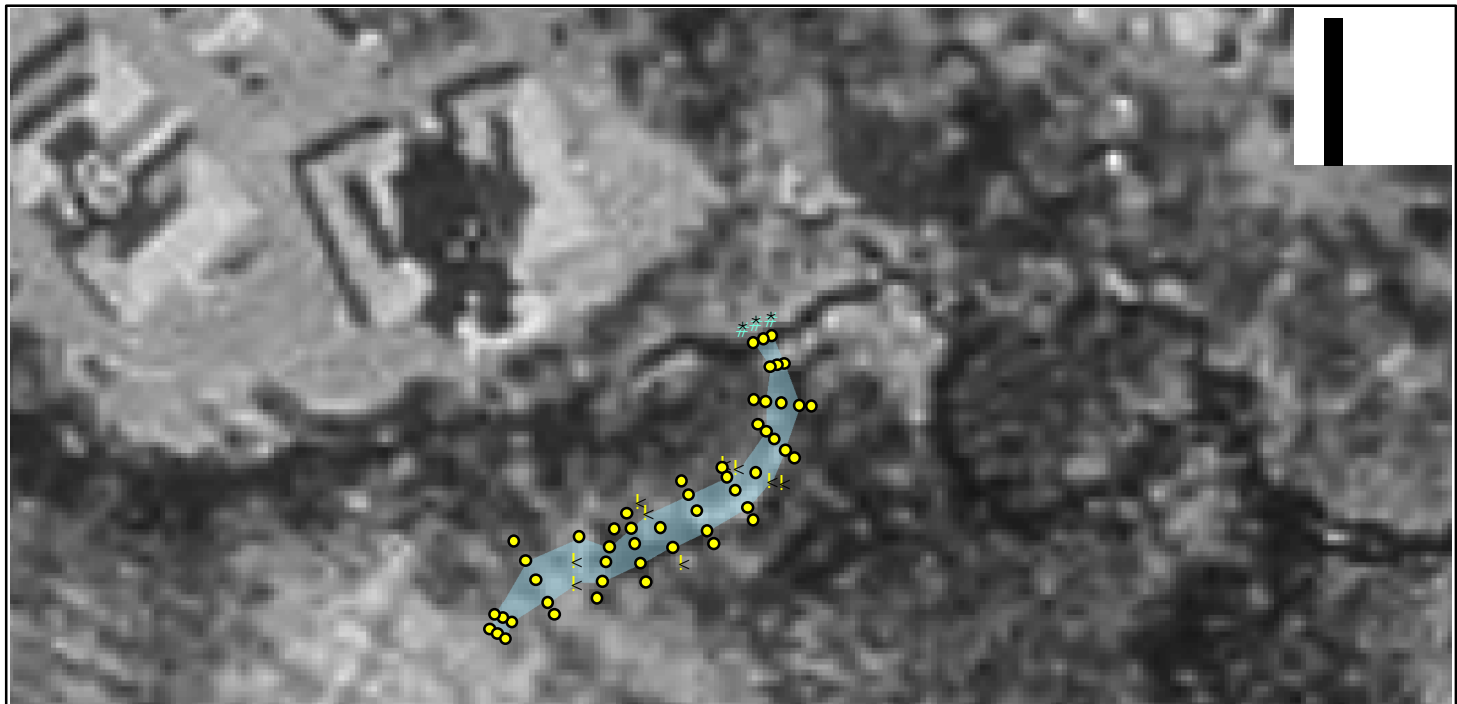
WAMPUS MILFORD ASSOCIATES
 80 WAMPUS LANE
 MILFORD, CONNECTICUT



REGION I SUPERFUND TECHNICAL ASSESSMENT AND RESPONSE TEAM

TDD # 06110002	DRAWN BY: A. LYNCH	DATE 02/21/2007
-------------------	-----------------------	--------------------

FILE NAME: R:\06110002\Figures\Figure2	FIGURE 2
---	----------



Legend

- * Sediment Sample
- Soil Sample
- ▲ Soil Sample/Boring
- Swale

SAMPLE LOCATION MAP

WAMPUS MILFORD ASSOCIATES
 80 WAMPUS LANE
 MILFORD, CONNECTICUT



REGION I SUPERFUND TECHNICAL ASSESSMENT AND RESPONSE TEAM

TDD NUMBER: 06-11-0002	CREATED BY: D. MUZRALL	CREATED ON: 1/3/2007
FILE LOCATION: E:\CT_GIS\Wampus\ Figure 3 - Sample Location Map.mxd		FIGURE 3

Appendix B

Photodocumentation Log

PHOTOGRAPHY LOG SHEET
Wampus Milford Associates • Milford, Connecticut



SCENE: View of Stubby Plain Brook with surface sample (SS) locations SS-01 and SS-02. Photograph taken facing west.

DATE: 20 December 2006

TIME: 1119 hours

PHOTOGRAPHER: Mark Hall

CAMERA: HP M22



SCENE: View of the drainage swale and surface sample locations SS-03 through SS-05. Photograph taken facing south.

DATE: 20 December 2006

TIME: 1120 hours

PHOTOGRAPHER: Mark Hall

CAMERA: HP M22

PHOTOGRAPHY LOG SHEET
Wampus Milford Associates • Milford, Connecticut



SCENE: View of the drainage swale with established sample locations. Photograph taken facing south.

DATE: 20 December 2006

PHOTOGRAPHER: Mark Hall

TIME: 1121 hours

CAMERA: HP M22



SCENE: View of the drainage swale. Photograph taken facing north.

DATE: 20 December 2006

PHOTOGRAPHER: Mark Hall

TIME: 1124 hours

CAMERA: HP M22

PHOTOGRAPHY LOG SHEET
Wampus Milford Associates • Milford, Connecticut



SCENE: View of the drainage swale with established sample locations. Photograph taken facing southwest.

DATE: 20 December 2006

TIME: 1125 hours

PHOTOGRAPHER: Mark Hall

CAMERA: HP M22



SCENE: View of the drainage swale with surface sample locations SS-21 through SS-25. Photograph taken facing east.

DATE: 20 December 2006

TIME: 1128 hours

PHOTOGRAPHER: Mark Hall

CAMERA: HP M22

PHOTOGRAPHY LOG SHEET
Wampus Milford Associates • Milford, Connecticut



SCENE: View of the drainage swale. Photograph taken facing west.

DATE: 20 December 2006

PHOTOGRAPHER: Mark Hall

TIME: 1129 hours

CAMERA: HP M22



SCENE: View of the concrete weir at the terminus of the drainage swale. Photograph taken facing south.

DATE: 20 December 2006

PHOTOGRAPHER: Mark Hall

TIME: 1131 hours

CAMERA: HP M22

PHOTOGRAPHY LOG SHEET
Wampus Milford Associates • Milford, Connecticut



SCENE: View of the drainage swale with surface sample locations SS-48 through SS-53. Photograph taken facing north.

DATE: 20 December 2006

PHOTOGRAPHER: Mark Hall

TIME: 1132 hours

CAMERA: HP M22

Appendix C

Chain-of-Custody Records

Appendix D

Analytical Summary Tables

TABLE 1

**SUMMARY OF TOTAL PETROLEUM HYDROCARBON RESULTS
SURFACE SOIL SAMPLES
WAMPUS MILFORD ASSOCIATES
MILFORD, CONNECTICUT**

SAMPLE LOCATION SAMPLE NUMBER DEPTH	SS-01 D15850 0 - 3 in.	SS-04 D18004 0 - 3 in.	SS-08 D18920 0 - 3 in.	SS-13 D18925 0 - 3 in.	SS-18 D18867 0 - 3 in.	SS-23 D18896 0 - 3 in.	CT DEP DEC I/CC
PARAMETER							
TPH	15,700	139	162	113	632	306	2,500

SAMPLE LOCATION SAMPLE NUMBER DEPTH	SS-28 D18901 0 - 3 in.	SS-38 D18911 0 - 3 in.	SS-44 D18917 0 - 3 in.	SS-48 D19113 0 - 3 in.	SS-51 D19116 0 - 3 in.	SS-55 D19121 0 - 3 in.	CT DEP DEC I/CC
PARAMETER							
TPH	601	1,860	650	2,240	465	83	2,500

NOTES:

- 1) Samples analyzed by Alpha Analytical Laboratory using EPA Method 3545, Petroleum Hydrocarbon Quantitation by GC-FID.
- 2) All Results in Milligrams per Kilogram (mg/Kg).
- 3) CT DEP DEC I/CC = Connecticut Department of Environmental Protection, Direct Exposure Criteria for Soil, Industrial/Commercial Criteria. Units in milligrams per Kilogram (mg/Kg).
- 4) Bolded and shaded results exceed CT DEP DEC I/CC.
- 5) TPH = Total Petroleum Hydrocarbons.
- 6) in. = Inches below ground surface.

TABLE 2

**SUMMARY OF POLYCHLORINATED BIPHENYL RESULTS
SURFACE SOIL SAMPLES
WAMPUS MILFORD ASSOCIATES
MILFORD, CONNECTICUT**

SAMPLE LOCATION SAMPLE NUMBER DEPTH	SS-01 D15850 0 - 3 in.	SS-33 D18906 0 - 3 in.	SS-44 D18917 0 - 3 in.	SS-48 D19113 0 - 3 in.	SS-51 D19116 0 - 3 in.	SS-55 D19121 0 - 3 in.	CT DEP DEC I/CC
COMPOUND							
Aroclor-1242	1.1	ND	ND	ND	ND	ND	10*
Aroclor-1254	0.89	0.16	0.36	0.26	0.29	ND	10*

NOTES:

- 1) Samples analyzed by U.S. EPA Office of Environmental Measurement and Evaluation (OEME) using EPA Region I SOP, EIASOP-PESTSOIL2.SOP, PCBs Medium level in Soil and Sediments.
- 2) All Results in Milligrams per Kilogram (mg/Kg).
- 3) CT DEP DEC I/CC = Connecticut Department of Environmental Protection, Direct Exposure Criteria for Soil, Industrial/Commercial Criteria. Units in milligrams per Kilogram (mg/Kg).
- 4) ND = Not Detected.
- 5) in. = Inches below ground surface.
- 6) * = CT DEP DEC I/CC for polychlorinated biphenyls is used.

TABLE 3

**SUMMARY OF POLYCYCLIC AROMATIC HYDROCARBON RESULTS
SURFACE SOIL AND SUBSURFACE SOIL SAMPLES
WAMPUS MILFORD ASSOCIATES
MILFORD, CONNECTICUT**

SAMPLE LOCATION SAMPLE NUMBER SAMPLE DEPTH	SS-01 D15850 0 - 3 in.	SS-02 D15851 0 - 3 in.	SS-03 D15852 0 - 3 in.	SS-04 D18004 0 - 3 in.	SS-05 D18005 0 - 3 in.	SS-06 D18006 0 - 3 in.	SS-08 D18920 0 - 3 in.	SS-09 D18921 0 - 3 in.	SS-11 D18923 0 - 3 in.	CT DEP DEC I/CC
COMPOUND										
Acenaphthene	ND	ND	ND	ND	ND	ND	ND	ND	ND	2,500,000
Anthracene	ND	ND	ND	ND	ND	ND	ND	ND	ND	2,500,000
Benzo(a)anthracene	3,600	3,700	4,100	ND	5,700	ND	570	2,000	1,600	7,800
Benzo(a)pyrene	2,500	3,000	3,000	ND	3,900	ND	470	1,400	ND	1,000
Benzo(b)fluoranthene	1,700	4,900	4,700	ND	7,600	ND	600	2,000	ND	7,800
Benzo(g,h,i)perylene	2,400	3,200	2,700	ND	4,100	ND	320	1,000	ND	NL
Benzo(k)fluoranthene	1,900	2,300	1,800	ND	1,300	ND	300	ND	ND	78,000
Chrysene	5,800	3,900	3,900	ND	5,400	ND	640	1,700	ND	NL
Dibenz(a,h)anthracene	ND	ND	ND	ND	ND	ND	ND	ND	ND	NL
Fluoranthene	ND	8,100	8,600	610	12,000	ND	1,500	5,100	2,000	2,500,000
Fluorene	ND	ND	ND	ND	ND	ND	ND	ND	ND	2,500,000
Indeno(1,2,3-cd)pyrene	2,400	3,400	3,200	ND	4,300	ND	390	1,200	ND	NL
Naphthalene	ND	ND	ND	ND	ND	ND	ND	ND	ND	2,500,000
Phenanthrene	ND	2,800	2,700	ND	4,200	ND	390	1,900	ND	2,500,000
Pyrene	2,000	6,800	6,700	390	9,600	1,600	940	3,500	2,400	2,500,000

NOTES:

- 1) Samples analyzed by U.S. EPA Office of Environmental Measurement and Evaluation (OEME) using EPA Region I SOP, EIASOP-PAH_SOIL4, PAHs in Soil.
- 2) All Results in Micrograms per Kilogram (µg/kg).
- 3) CT DEP DEC I/CC = Connecticut Department of Environmental Protection, Direct Exposure Criteria for Soil, Industrial/Commercial Criteria.
Units in micrograms per Kilogram (µg/Kg).
- 4) Bolded and shaded results exceed CT DEP DEC I/CC.
- 5) ND = Not Detected.
- 6) NL = Not Listed under CT DEP DEC I/CC.
- 7) in. = Inches below ground surface.
- 8) Ft. = Feet below ground surface.

TABLE 3

**SUMMARY OF POLYCYCLIC AROMATIC HYDROCARBON RESULTS
SURFACE SOIL AND SUBSURFACE SOIL SAMPLES
WAMPUS MILFORD ASSOCIATES
MILFORD, CONNECTICUT**

SAMPLE LOCATION SAMPLE NUMBER SAMPLE DEPTH	SS-14 D18926 0 - 3 in.	SS-16 D18865 0 - 3 in.	SS-17 D18866 0 - 3 in.	SS-18 D18867 0 - 3 in.	SS-19 D18868 0 - 3 in.	SS-20 D18869 0 - 3 in.	SS-21 D18870 0 - 3 in.	SS-22 D18895 0 - 3 in.	SS-23 D18896 0 - 3 in.	CT DEP DEC I/CC
COMPOUND										
Acenaphthene	ND	ND	ND	ND	ND	ND	ND	ND	ND	2,500,000
Anthracene	ND	ND	ND	ND	ND	ND	ND	ND	ND	2,500,000
Benzo(a)anthracene	2,900	1,600	1,300	880	4,600	ND	ND	1,700	310	7,800
Benzo(a)pyrene	2,300	ND	ND	530	3,100	ND	ND	1,500	210	1,000
Benzo(b)fluoranthene	2,800	ND	1,200	820	4,400	ND	1,100	2,900	370	7,800
Benzo(g,h,i)perylene	2,000	ND	ND	480	3,200	ND	750	1,700	ND	NL
Benzo(k)fluoranthene	1,500	ND	ND	ND	1,500	ND	ND	850	ND	78,000
Chrysene	2,700	ND	1,100	1,100	4,000	ND	880	2,100	270	NL
Dibenz(a,h)anthracene	ND	ND	ND	ND	ND	ND	ND	ND	ND	NL
Fluoranthene	6,400	ND	2,100	2,300	9,800	900	1,500	4,000	580	2,500,000
Fluorene	ND	ND	ND	ND	ND	ND	ND	ND	ND	2,500,000
Indeno(1,2,3-cd)pyrene	2,400	ND	1,100	600	3,700	ND	770	1,700	ND	NL
Naphthalene	ND	ND	ND	ND	ND	ND	ND	ND	ND	2,500,000
Phenanthrene	2,100	ND	ND	ND	3,700	ND	620	1,100	250	2,500,000
Pyrene	5,000	2,000	2,000	1,600	7,500	ND	1,500	3,300	500	2,500,000

NOTES:

- 1) Samples analyzed by U.S. EPA Office of Environmental Measurement and Evaluation (OEME) using EPA Region I SOP, EIASOP-PAHSOIL4, PAHs in Soil.
- 2) All Results in Micrograms per Kilogram ($\mu\text{g}/\text{kg}$).
- 3) CT DEP DEC I/CC = Connecticut Department of Environmental Protection, Direct Exposure Criteria for Soil, Industrial/Commercial Criteria.
Units in micrograms per Kilogram ($\mu\text{g}/\text{Kg}$).
- 4) Bolded and shaded results exceed CT DEP DEC I/CC.
- 5) ND = Not Detected.
- 6) NL = Not Listed under CT DEP DEC I/CC.
- 7) in. = Inches below ground surface.
- 8) Ft. = Feet below ground surface.

TABLE 3

**SUMMARY OF POLYCYCLIC AROMATIC HYDROCARBON RESULTS
SURFACE SOIL AND SUBSURFACE SOIL SAMPLES
WAMPUS MILFORD ASSOCIATES
MILFORD, CONNECTICUT**

SAMPLE LOCATION SAMPLE NUMBER SAMPLE DEPTH	SS-24 D18897 0 - 3 in.	SS-26 D18899 0 - 3 in.	SS-27 D18900 0 - 3 in.	SS-28 D18901 0 - 3 in.	SS-29 D18902 0 - 3 in.	SS-30 D18903 0 - 3 in.	SS-31 D18904 0 - 3 in.	SS-32 D18905 0 - 3 in.	SS-33 D18906 0 - 3 in.	CT DEP DEC I/CC
COMPOUND										
Acenaphthene	ND	ND	ND	ND	ND	ND	ND	ND	ND	2,500,000
Anthracene	ND	ND	ND	ND	ND	ND	ND	ND	800	2,500,000
Benzo(a)anthracene	5,000	510	ND	740	1,700	540	620	2,800	3,900	7,800
Benzo(a)pyrene	4,500	370	ND	520	1,300	410	460	2,600	2,600	1,000
Benzo(b)fluoranthene	7,900	530	300	920	2,300	ND	730	4,500	4,800	7,800
Benzo(g,h,i)perylene	4,300	380	ND	490	1,200	420	510	2,300	1,300	NL
Benzo(k)fluoranthene	2,100	ND	ND	280	ND	1,000	ND	1,700	2,400	78,000
Chrysene	6,900	540	ND	780	1,800	580	700	3,900	3,600	NL
Dibenz(a,h)anthracene	ND	ND	ND	ND	ND	ND	ND	ND	530	NL
Fluoranthene	11,000	1,000	360	1,800	3,600	1,100	1,300	7,100	7,400	2,500,000
Fluorene	ND	ND	ND	ND	ND	ND	ND	ND	ND	2,500,000
Indeno(1,2,3-cd)pyrene	4,700	420	ND	530	1,300	440	490	2,400	1,800	NL
Naphthalene	ND	ND	ND	ND	ND	ND	ND	ND	ND	2,500,000
Phenanthrene	3,600	ND	ND	750	1,200	370	ND	2,500	3,300	2,500,000
Pyrene	9,800	990	370	1,400	3,200	1,000	1,300	5,900	4,400	2,500,000

NOTES:

- 1) Samples analyzed by U.S. EPA Office of Environmental Measurement and Evaluation (OEME) using EPA Region I SOP, EIASOP-PAHSOIL4, PAHs in Soil.
- 2) All Results in Micrograms per Kilogram (µg/kg).
- 3) CT DEP DEC I/CC = Connecticut Department of Environmental Protection, Direct Exposure Criteria for Soil, Industrial/Commercial Criteria.
Units in micrograms per Kilogram (µg/Kg).
- 4) Bolded and shaded results exceed CT DEP DEC I/CC.
- 5) ND = Not Detected.
- 6) NL = Not Listed under CT DEP DEC I/CC.
- 7) in. = Inches below ground surface.
- 8) Ft. = Feet below ground surface.

TABLE 3

**SUMMARY OF POLYCYCLIC AROMATIC HYDROCARBON RESULTS
SURFACE SOIL AND SUBSURFACE SOIL SAMPLES
WAMPUS MILFORD ASSOCIATES
MILFORD, CONNECTICUT**

SAMPLE LOCATION SAMPLE NUMBER SAMPLE DEPTH	SS-34 D18907 0 - 3 in.	SS-35 D18908 0 - 3 in.	SS-36 D18909 0 - 3 in.	SS-37 D18910 0 - 3 in.	SS-38 D18911 0 - 3 in.	SS-39 D18912 0 - 3 in.	SS-40 D18913 0 - 3 in.	SS-41 D18914 0 - 3 in.	SS-42 D18915 0 - 3 in.	CT DEP DEC I/CC
COMPOUND										
Acenaphthene	ND	ND	ND	ND	ND	ND	ND	ND	ND	2,500,000
Anthracene	ND	ND	ND	950	750	ND	ND	ND	1,100	2,500,000
Benzo(a)anthracene	1,500	ND	4,100	4,700	4,600	390	1,600	4,600	6,000	7,800
Benzo(a)pyrene	1,400	ND	3,400	4,200	3,400	370	1,600	4,900	5,700	1,000
Benzo(b)fluoranthene	2,100	320	4,800	6,800	4,200	640	2,400	9,000	8,600	7,800
Benzo(g,h,i)perylene	ND	ND	2,300	4,000	2,900	ND	1,400	4,900	5,400	NL
Benzo(k)fluoranthene	1,300	ND	1,200	1,500	1,800	ND	810	2,600	3,300	78,000
Chrysene	1,700	ND	4,400	5,000	5,900	450	2,100	4,200	6,200	NL
Dibenz(a,h)anthracene	ND	ND	580	890	ND	ND	ND	ND	ND	NL
Fluoranthene	3,600	400	8,000	8,600	6,300	780	ND	12,000	16,000	2,500,000
Fluorene	ND	ND	ND	ND	ND	ND	ND	ND	ND	2,500,000
Indeno(1,2,3-cd)pyrene	1,200	ND	2,700	4,000	3,500	ND	1,600	4,900	5,200	NL
Naphthalene	ND	ND	ND	ND	ND	ND	ND	ND	ND	2,500,000
Phenanthrene	1,100	ND	2,500	4,800	3,700	ND	ND	3,500	5,000	2,500,000
Pyrene	1,900	380	7,100	8,000	10,000	700	3,300	8,500	10,000	2,500,000

NOTES:

- 1) Samples analyzed by U.S. EPA Office of Environmental Measurement and Evaluation (OEME) using EPA Region I SOP, EIASOP-PAHSOIL4, PAHs in Soil.
- 2) All Results in Micrograms per Kilogram (µg/kg).
- 3) CT DEP DEC I/CC = Connecticut Department of Environmental Protection, Direct Exposure Criteria for Soil, Industrial/Commercial Criteria.
Units in micrograms per Kilogram (µg/Kg).
- 4) Bolded and shaded results exceed CT DEP DEC I/CC.
- 5) ND = Not Detected.
- 6) NL = Not Listed under CT DEP DEC I/CC.
- 7) in. = Inches below ground surface.
- 8) Ft. = Feet below ground surface.

TABLE 3

SUMMARY OF POLYCYCLIC AROMATIC HYDROCARBON RESULTS
 SURFACE SOIL AND SUBSURFACE SOIL SAMPLES
 WAMPUS MILFORD ASSOCIATES
 MILFORD, CONNECTICUT

SAMPLE LOCATION SAMPLE NUMBER SAMPLE DEPTH	SS-43 D18916 0 - 3 in.	SS-44 D18917 0 - 3 in.	SS-46 D19111 0 - 3 in.	SS-47 D19112 0 - 3 in.	SS-48 D19113 0 - 3 in.	SS-49 D19114 0 - 3 in.	SS-50 D19115 0 - 3 in.	SS-51 D19116 0 - 3 in.	SS-52 D19117 0 - 3 in.	CT DEP DEC I/CC
COMPOUND										
Acenaphthene	ND	ND	ND	ND	500	ND	ND	6,100	ND	2,500,000
Anthracene	640	ND	ND	ND	1,400	ND	ND	13,000	ND	2,500,000
Benzo(a)anthracene	3,000	2,500	ND	330	7,600	ND	ND	24,000	ND	7,800
Benzo(a)pyrene	2,600	2,100	ND	350	7,400	ND	ND	21,000	ND	1,000
Benzo(b)fluoranthene	3,900	3,400	260	510	10,000	340	ND	28,000	260	7,800
Benzo(g,h,i)perylene	2,200	1,800	ND	ND	4,500	ND	ND	11,000	ND	NL
Benzo(k)fluoranthene	1,100	1,200	ND	ND	3,500	ND	ND	7,600	ND	78,000
Chrysene	3,100	2,400	ND	370	8,600	ND	ND	23,000	ND	NL
Dibenz(a,h)anthracene	ND	ND	ND	ND	1,200	ND	ND	2,900	ND	NL
Fluoranthene	7,600	6,200	310	800	17,000	370	ND	66,000	450	2,500,000
Fluorene	ND	ND	ND	ND	ND	ND	ND	5,400	ND	2,500,000
Indeno(1,2,3-cd)pyrene	2,400	1,900	ND	ND	4,600	ND	ND	11,000	ND	NL
Naphthalene	ND	ND	ND	ND	ND	ND	ND	3,700	ND	2,500,000
Phenanthrene	2,900	1,800	ND	470	6,400	ND	ND	52,000	570	2,500,000
Pyrene	5,100	4,000	330	820	15,000	400	280	56,000	440	2,500,000

NOTES:

- 1) Samples analyzed by U.S. EPA Office of Environmental Measurement and Evaluation (OEME) using EPA Region I SOP, EIASOP-PAHSOIL4, PAHs in Soil.
- 2) All Results in Micrograms per Kilogram (µg/kg).
- 3) CT DEP DEC I/CC = Connecticut Department of Environmental Protection, Direct Exposure Criteria for Soil, Industrial/Commercial Criteria.
Units in micrograms per Kilogram (µg/Kg).
- 4) Bolded and shaded results exceed CT DEP DEC I/CC.
- 5) ND = Not Detected.
- 6) NL = Not Listed under CT DEP DEC I/CC.
- 7) in. = Inches below ground surface.
- 8) Ft. = Feet below ground surface.

TABLE 3

**SUMMARY OF POLYCYCLIC AROMATIC HYDROCARBON RESULTS
SURFACE SOIL AND SUBSURFACE SOIL SAMPLES
WAMPUS MILFORD ASSOCIATES
MILFORD, CONNECTICUT**

SAMPLE LOCATION SAMPLE NUMBER SAMPLE DEPTH	SS-53 D19118 0 - 3 in.	SS-54 D19120 0 - 3 in.	SS-55 D19121 0 - 3 in.	SS-56 D19122 0 - 3 in.	SS-57 D19123 0 - 3 in.	SS-58 D19124 0 - 3 in.	SS-59 D19125 0 - 3 in.	SS-60 D19126 0 - 3 in.	SB-01 D19133 0 - 1 Ft.	CT DEP DEC I/CC
COMPOUND										
Acenaphthene	ND	ND	460	ND	ND	ND	ND	ND	740	2,500,000
Anthracene	ND	ND	1,200	ND	ND	ND	ND	ND	1,500	2,500,000
Benzo(a)anthracene	ND	ND	4,300	430	700	ND	700	1,800	2,500	7,800
Benzo(a)pyrene	ND	ND	3,700	430	470	ND	620	1,800	2,300	1,000
Benzo(b)fluoranthene	310	ND	5,100	580	710	ND	630	2,500	2,900	7,800
Benzo(g,h,i)perylene	ND	ND	2,000	ND	420	ND	390	1,100	1,400	NL
Benzo(k)fluoranthene	ND	ND	1,800	ND	520	ND	450	1,400	1,100	78,000
Chrysene	ND	ND	4,600	460	710	ND	700	2,200	2,300	NL
Dibenz(a,h)anthracene	ND	ND	540	ND	ND	ND	ND	ND	360	NL
Fluoranthene	380	ND	12,000	770	1,600	440	1,700	5,300	6,000	2,500,000
Fluorene	ND	ND	370	ND	ND	ND	ND	ND	950	2,500,000
Indeno(1,2,3-cd)pyrene	ND	ND	2,000	ND	600	330	610	1,600	1,400	NL
Naphthalene	ND	ND	ND	ND	ND	ND	ND	ND	1,000	2,500,000
Phenanthrene	ND	ND	5,200	430	610	ND	520	1,900	5,800	2,500,000
Pyrene	390	ND	11,000	880	940	ND	920	3,400	5,100	2,500,000

NOTES:

- 1) Samples analyzed by U.S. EPA Office of Environmental Measurement and Evaluation (OEME) using EPA Region I SOP, EIASOP-PAHSOIL4, PAHs in Soil.
- 2) All Results in Micrograms per Kilogram ($\mu\text{g}/\text{kg}$).
- 3) CT DEP DEC I/CC = Connecticut Department of Environmental Protection, Direct Exposure Criteria for Soil, Industrial/Commercial Criteria.
Units in micrograms per Kilogram ($\mu\text{g}/\text{Kg}$).
- 4) Bolded and shaded results exceed CT DEP DEC I/CC.
- 5) ND = Not Detected.
- 6) NL = Not Listed under CT DEP DEC I/CC.
- 7) in. = Inches below ground surface.
- 8) Ft. = Feet below ground surface.

TABLE 3

**SUMMARY OF POLYCYCLIC AROMATIC HYDROCARBON RESULTS
SURFACE SOIL AND SUBSURFACE SOIL SAMPLES
WAMPUS MILFORD ASSOCIATES
MILFORD, CONNECTICUT**

SAMPLE LOCATION SAMPLE NUMBER SAMPLE DEPTH	SB-01 D19134 1 - 2 Ft.	SB-02 D19136 1 - 2 Ft.	SB-03 D19137 1 - 2 Ft.	SB-07 D19247 1 - 2 Ft.	CT DEP DEC I/CC
COMPOUND					
Acenaphthene	ND	ND	ND	ND	2,500,000
Anthracene	ND	ND	ND	ND	2,500,000
Benzo(a)anthracene	ND	270	410	830	7,800
Benzo(a)pyrene	ND	290	400	490	1,000
Benzo(b)fluoranthene	ND	500	510	620	7,800
Benzo(g,h,i)perylene	ND	ND	ND	460	NL
Benzo(k)fluoranthene	ND	ND	300	450	78,000
Chrysene	ND	380	410	720	NL
Dibenz(a,h)anthracene	ND	ND	ND	ND	NL
Fluoranthene	500	840	860	1,800	2,500,000
Fluorene	ND	ND	ND	ND	2,500,000
Indeno(1,2,3-cd)pyrene	290	360	370	680	NL
Naphthalene	ND	ND	ND	ND	2,500,000
Phenanthrene	ND	290	ND	930	2,500,000
Pyrene	ND	450	490	1,100	2,500,000

NOTES:

- 1) Samples analyzed by U.S. EPA Office of Environmental Measurement and Evaluation (OEME) using EPA Region I SOP, EIASOP-PAH_SOIL4, PAHs in Soil.
- 2) All Results in Micrograms per Kilogram ($\mu\text{g}/\text{kg}$).
- 3) CT DEP DEC I/CC = Connecticut Department of Environmental Protection, Direct Exposure Criteria for Soil, Industrial/Commercial Criteria.
Units in micrograms per Kilogram ($\mu\text{g}/\text{Kg}$).
- 4) Bolded and shaded results exceed CT DEP DEC I/CC.
- 5) ND = Not Detected.
- 6) NL = Not Listed under CT DEP DEC I/CC.
- 7) in. = Inches below ground surface.
- 8) Ft. = Feet below ground surface.

TABLE 4

**SUMMARY OF METALS RESULTS
SURFACE SOIL AND SUBSURFACE SOIL SAMPLES
WAMPUS MILFORD ASSOCIATES
MILFORD, CONNECTICUT**

SAMPLE LOCATION SAMPLE NUMBER SAMPLE DEPTH	SS-01 D15850 0 - 3 in.	SS-02 D15851 0 - 3 in.	SS-03 D15852 0 - 3 in.	SS-04 D18004 0 - 3 in.	SS-05 D18005 0 - 3 in.	SS-06 D18006 0 - 3 in.	SS-07 D18919 0 - 3 in.	SS-08 D18920 0 - 3 in.	SS-09 D18921 0 - 3 in.	CT DEP DEC I/CC
PARAMETER										
Beryllium	ND	ND	ND	ND	ND	ND	ND	ND	ND	2
Cadmium	560	72	120	25	73	13	37	50	36	1,000
Copper	18,000	1,000	1,100	350	840	99	490	780	550	76,000
Lead	700	440	610	110	470	83	300	330	310	1,000
Nickel	290	110	190	52	130	27	67	120	55	7,500
Vanadium	67	88	69	13	71	26	50	22	33	14,000
Zinc	1,400	490	360	78	260	98	110	110	100	610,000

SAMPLE LOCATION SAMPLE NUMBER SAMPLE DEPTH	SS-10 D18922 0 - 3 in.	SS-11 D18923 0 - 3 in.	SS-12 D18924 0 - 3 in.	SS-13 D18925 0 - 3 in.	SS-14 D18926 0 - 3 in.	SS-15 D18927 0 - 3 in.	SS-16 D18865 0 - 3 in.	SS-17 D18866 0 - 3 in.	SS-18 D18867 0 - 3 in.	CT DEP DEC I/CC
PARAMETER										
Beryllium	ND	ND	ND	ND	ND	ND	ND	ND	4.9	2
Cadmium	1.5	13	30	27	260	ND	10	42	890	1,000
Copper	45	200	1,000	530	3,500	14	63	830	9,200	76,000
Lead	9.9	210	520	230	710	11	64	460	6,400	1,000
Nickel	15	30	63	52	290	8.9	20	82	720	7,500
Vanadium	14	52	18	19	73	11	20	28	58	14,000
Zinc	24	76	54	68	290	17	100	170	530	610,000

NOTES:

- 1) Metals samples analyzed by U.S. EPA Office of Environmental Measurement and Evaluation (OEME) using EPA Region I SOP, EIASOP-INGDVICP0, Metals in Soil Medium Level by Inductively Coupled Plasma (ICP).
- 2) All results in Milligrams per Kilogram (mg/Kg).
- 3) CT DEP DEC I/CC = Connecticut Department of Environmental Protection, Direct Exposure Criteria for Soil, Industrial/Commercial Criteria. Units in Milligrams per Kilogram (mg/Kg).
- 4) Bolded and shaded results exceed CT DEP DEC I/CC.
- 5) ND = Not Detected.
- 6) in. = Inches below ground surface.
- 7) Ft. = Feet below ground surface.

TABLE 4

SUMMARY OF METALS RESULTS
 SURFACE SOIL AND SUBSURFACE SOIL SAMPLES
 WAMPUS MILFORD ASSOCIATES
 MILFORD, CONNECTICUT

SAMPLE LOCATION SAMPLE NUMBER SAMPLE DEPTH	SS-19 D18868 0 - 3 in.	SS-20 D18869 0 - 3 in.	SS-21 D18870 0 - 3 in.	SS-22 D18895 0 - 3 in.	SS-23 D18896 0 - 3 in.	SS-24 D18897 0 - 3 in.	SS-25 D18898 0 - 3 in.	SS-26 D18899 0 - 3 in.	SS-27 D18900 0 - 3 in.	CT DEP DEC I/CC
PARAMETER										
Beryllium	ND	ND	ND	ND	0.85	6.2	ND	ND	ND	2
Cadmium	270	5.3	13	23	30	270	3.2	20	7.4	1,000
Copper	3,700	48	210	530	640	5,700	65	540	170	76,000
Lead	840	28	140	310	400	1,900	19	200	50	1,000
Nickel	290	17	53	100	110	1,300	15	110	50	7,500
Vanadium	110	16	30	39	23	250	11	54	28	14,000
Zinc	430	72	110	130	86	1,100	28	170	86	610,000

SAMPLE LOCATION SAMPLE NUMBER SAMPLE DEPTH	SS-28 D18901 0 - 3 in.	SS-29 D18902 0 - 3 in.	SS-30 D18903 0 - 3 in.	SS-31 D18904 0 - 3 in.	SS-32 D18905 0 - 3 in.	SS-33 D18906 0 - 3 in.	SS-34 D18907 0 - 3 in.	SS-35 D18908 0 - 3 in.	SS-36 D18909 0 - 3 in.	CT DEP DEC I/CC
PARAMETER										
Beryllium	ND	2.1	1.9	ND	ND	1.1	1.6	ND	ND	2
Cadmium	70	80	140	10	91	75	110	1.4	39	1,000
Copper	940	2,600	2,300	160	950	1,300	2,500	34	560	76,000
Lead	360	1,100	1,900	74	620	480	470	21	410	1,000
Nickel	150	230	290	52	380	180	220	13	160	7,500
Vanadium	30	110	57	31	200	52	200	14	75	14,000
Zinc	120	390	170	89	640	240	390	25	260	610,000

NOTES:

- 1) Metals samples analyzed by U.S. EPA Office of Environmental Measurement and Evaluation (OEME) using EPA Region I SOP, EIASOP-INGDVICP0, Metals in Soil Medium Level by Inductively Coupled Plasma (ICP).
- 2) All results in Milligrams per Kilogram (mg/Kg).
- 3) CT DEP DEC I/CC = Connecticut Department of Environmental Protection, Direct Exposure Criteria for Soil, Industrial/Commercial Criteria. Units in Milligrams per Kilogram (mg/Kg).
- 4) Bolded and shaded results exceed CT DEP DEC I/CC.
- 5) ND = Not Detected.
- 6) in. = Inches below ground surface.
- 7) Ft. = Feet below ground surface.

TABLE 4

SUMMARY OF METALS RESULTS
 SURFACE SOIL AND SUBSURFACE SOIL SAMPLES
 WAMPUS MILFORD ASSOCIATES
 MILFORD, CONNECTICUT

SAMPLE LOCATION SAMPLE NUMBER SAMPLE DEPTH	SS-37 D18910 0 - 3 in.	SS-38 D18911 0 - 3 in.	SS-39 D18912 0 - 3 in.	SS-40 D18913 0 - 3 in.	SS-41 D18914 0 - 3 in.	SS-42 D18915 0 - 3 in.	SS-43 D18916 0 - 3 in.	SS-44 D18917 0 - 3 in.	SS-45 D18918 0 - 3 in.	CT DEP DEC I/CC
PARAMETER										
Beryllium	ND	6.1	ND	ND	ND	ND	ND	1.3	ND	2
Cadmium	76	740	30	4.1	110	72	46	38	14	1,000
Copper	850	8,700	340	470	790	420	330	2,600	140	76,000
Lead	490	4,100	190	130	240	230	240	330	27	1,000
Nickel	170	1,500	78	130	170	96	58	97	20	7,500
Vanadium	110	89	64	42	100	110	63	72	14	14,000
Zinc	510	1,000	250	140	630	520	260	170	78	610,000

SAMPLE LOCATION SAMPLE NUMBER SAMPLE DEPTH	SS-46 D19111 0 - 3 in.	SS-47 D19112 0 - 3 in.	SS-48 D19113 0 - 3 in.	SS-49 D19114 0 - 3 in.	SS-50 D19115 0 - 3 in.	SS-51 D19116 0 - 3 in.	SS-52 D19117 0 - 3 in.	SS-53 D19118 0 - 3 in.	SS-54 D19120 0 - 3 in.	CT DEP DEC I/CC
PARAMETER										
Beryllium	ND	ND	0.84	ND	ND	ND	ND	ND	ND	2
Cadmium	22	20	22	13	13	53	19	13	2.3	1,000
Copper	270	150	680	200	140	290	260	270	81	76,000
Lead	31	150	290	40	36	82	45	55	9.8	1,000
Nickel	28	22	65	21	20	46	36	19	15	7,500
Vanadium	13	18	66	14	13	53	11	13	17	14,000
Zinc	74	61	240	49	44	250	60	70	33	610,000

NOTES:

- 1) Metals samples analyzed by U.S. EPA Office of Environmental Measurement and Evaluation (OEME) using EPA Region I SOP, EIASOP-INGDVICP0, Metals in Soil Medium Level by Inductively Coupled Plasma (ICP).
- 2) All results in Milligrams per Kilogram (mg/Kg).
- 3) CT DEP DEC I/CC = Connecticut Department of Environmental Protection, Direct Exposure Criteria for Soil, Industrial/Commercial Criteria. Units in Milligrams per Kilogram (mg/Kg).
- 4) Bolded and shaded results exceed CT DEP DEC I/CC.
- 5) ND = Not Detected.
- 6) in. = Inches below ground surface.
- 7) Ft. = Feet below ground surface.

TABLE 4

**SUMMARY OF METALS RESULTS
SURFACE SOIL AND SUBSURFACE SOIL SAMPLES
WAMPUS MILFORD ASSOCIATES
MILFORD, CONNECTICUT**

SAMPLE LOCATION SAMPLE NUMBER SAMPLE DEPTH	SS-55 D19121 0 - 3 in.	SS-56 D19122 0 - 3 in.	SS-57 D19123 0 - 3 in.	SS-58 D19124 0 - 3 in.	SS-59 D19125 0 - 3 in.	SS-60 D19126 0 - 3 in.	SS-61 D19127 0 - 3 in.	SS-62 D19128 0 - 3 in.	SS-00 D19129 0 - 3 in.	CT DEP DEC I/CC
PARAMETER										
Beryllium	ND	ND	ND	ND	ND	ND	ND	ND	ND	2
Cadmium	8.5	9.7	8.1	6.3	5.9	4.1	6	5.9	28	1,000
Copper	130	210	130	110	110	43	440	110	610	76,000
Lead	24	11	21	19	18	28	130	19	370	1,000
Nickel	18	16	17	18	16	15	23	15	65	7,500
Vanadium	16	13	14	17	15	19	39	15	88	14,000
Zinc	52	39	37	40	36	46	130	34	440	610,000

SAMPLE LOCATION SAMPLE NUMBER SAMPLE DEPTH	SB-01 D19133 0 - 1 Ft.	SB-02 D19135 0 - 1 Ft.	SB-03 D19138 0 - 1 Ft.	SB-04 D19139 0 - 1 Ft.	SB-05 D19140 0 - 1 Ft.	SB-07 D19247 0 - 1 Ft.	SB-08 D19249 0 - 1 Ft.	SB-09 D19250 0 - 1 Ft.	SB-10 D19252 0 - 1 Ft.	CT DEP DEC I/CC
PARAMETER										
Beryllium	ND	ND	ND	ND	ND	ND	ND	ND	ND	2
Cadmium	10	6	3.6	ND	1.9	ND	6.4	1.4	1.1	1,000
Copper	72	53	22	21	11	59	170	21	16	76,000
Lead	12	19	3.7	7.9	3.2	2.9	37	6.2	4.1	1,000
Nickel	16	12	22	19	8.8	7.3	16	12	9.8	7,500
Vanadium	13	11	8.5	14	5.7	5.7	6.3	5.9	6.6	14,000
Zinc	36	21	24	25	15	15	25	12	20	610,000

NOTES:

- 1) Metals samples analyzed by U.S. EPA Office of Environmental Measurement and Evaluation (OEME) using EPA Region I SOP, EIASOP-INGDVICP0, Metals in Soil Medium Level by Inductively Coupled Plasma (ICP).
- 2) All results in Milligrams per Kilogram (mg/Kg).
- 3) CT DEP DEC I/CC = Connecticut Department of Environmental Protection, Direct Exposure Criteria for Soil, Industrial/Commercial Criteria. Units in Milligrams per Kilogram (mg/Kg).
- 4) Bolded and shaded results exceed CT DEP DEC I/CC.
- 5) ND = Not Detected.
- 6) in. = Inches below ground surface.
- 7) Ft. = Feet below ground surface.

TABLE 4

**SUMMARY OF METALS RESULTS
SURFACE SOIL AND SUBSURFACE SOIL SAMPLES
WAMPUS MILFORD ASSOCIATES
MILFORD, CONNECTICUT**

SAMPLE LOCATION SAMPLE NUMBER SAMPLE DEPTH	SB-11 D19254 0 - 1 Ft.	SB-01 D19134 1 - 2 Ft.	SB-02 D19136 1 - 2 Ft.	SB-03 D19137 1 - 2 Ft.	SB-07 D19247 1 - 2 Ft.	SB-09 D19251 1 - 2 Ft.	SB-10 D19253 1 - 2 Ft.	SB-11 D19255 1 - 2 Ft.	CT DEP DEC I/CC
PARAMETER									
Beryllium	ND	ND	ND	ND	ND	ND	ND	ND	2
Cadmium	7.5	2.9	3.1	ND	2.7	1.8	1	2.6	1,000
Copper	89	14	46	16	86	20	8.2	12	76,000
Lead	13	5.6	14	6.1	3.7	8.3	3.5	5.2	1,000
Nickel	16	14	14	22	11	12	10	12	7,500
Vanadium	14	12	12	18	8.5	8.2	6.6	9.1	14,000
Zinc	33	36	29	32	27	15	13	29	610,000

NOTES:

- 1) Metals samples analyzed by U.S. EPA Office of Environmental Measurement and Evaluation (OEME) using EPA Region I SOP, EIASOP-INGDVICP0, Metals in Soil Medium Level by Inductively Coupled Plasma (ICP).
- 2) All results in Milligrams per Kilogram (mg/Kg).
- 3) CT DEP DEC I/CC = Connecticut Department of Environmental Protection, Direct Exposure Criteria for Soil, Industrial/Commercial Criteria. Units in Milligrams per Kilogram (mg/Kg).
- 4) Bolded and shaded results exceed CT DEP DEC I/CC.
- 5) ND = Not Detected.
- 6) in. = Inches below ground surface.
- 7) Ft. = Feet below ground surface.

TABLE 5

**SUMMARY OF METALS RESULTS
SEDIMENT SAMPLES
WAMPUS MILFORD ASSOCIATES
MILFORD, CONNECTICUT**

SAMPLE LOCATION SAMPLE NUMBER SAMPLE DEPTH	SD-01 D19130 0 - 6 in.	SD-02 D19131 0 - 6 in.	SD-03 D19132 0 - 6 in.	TECs
PARAMETER				
Copper	23	30	11	31.6
Lead	14	12	13	35.8
Nickel	23	19	23	22.7
Vanadium	51	50	72	Not available
Zinc	68	51	57	121

NOTES:

- 1) Metals samples analyzed by U.S. EPA Office of Environmental Measurement and Evaluation (OEME) using EPA Region I SOP, EIASOP-INGDVICP0, Metals in Soil Medium Level by Inductively Coupled Plasma (ICP).
- 2) All results in Milligrams per Kilogram (mg/Kg).
- 3) TECs = Freshwater Sediment Benchmarks/Threshold Effect Concentrations. From MacDonald, D.D., C.G. Ingersoll, T.A.Berger. 2000. Development and Evaluation of Consensus-Based Sediment Quality Guidelines for Freshwater Ecosystems. Archives of Environmental Contamination and Toxicology Vol. 39, pp 20-31.
- 4) Bolded and shaded results exceed TECs for Freshwater Sediments.
- 5) ND = Not Detected.
- 6) in. = Inches below ground surface.

Appendix E

Analytical Data Tables

TABLE 1

TOTAL PETROLEUM HYDROCARBONS (TPH) IN SOILS ANALYSES
mg/kg

SITE: WAMPUS MILFORD ASSOCIATES
CASE: 06120038 - 06120041
LABORATORY: OEME

NOT VALIDATED DATA

SAMPLE LOCATION:	SS-01	SS-04	SS-08	SS-13	SS-18	SS-23	SS-28
SAMPLE NUMBER:	D15850	D18004	D18920	D18925	D18867	D18896	D18901
LABORATORY NUMBER:	AA68363	AA68366	AA68370	AA68375	AA68380	AA68385	AA68390

ORGANIC ANALYTES	METHOD	REPORTING LIMIT	SS-01	SS-04	SS-08	SS-13	SS-18	SS-23	SS-28
TPH	8015	33.3	15700	139	162	113	632	306	601

DILUTION FACTOR:	25	1	1	1	1	1	1	2
PERCENT SOLIDS:	20	74	70	77	77	77	71	69
DATE SAMPLED:	12/19/2006	12/19/2006	12/19/2006	12/19/2006	12/19/2006	12/19/2006	12/19/2006	12/19/2006
DATE EXTRACTED:	12/27/2006	12/30/2006	12/27/2006	12/27/2006	12/27/2006	12/27/2006	12/27/2006	12/27/2006
DATE ANALYZED:	12/30/2006	1/2/2007	12/30/2006	12/30/2006	12/30/2006	12/30/2006	12/30/2006	12/30/2006

NOTES:

- 1) METHOD = EPA/SW-846 8082.
- 2) ND = Not Detected.

TABLE 1

TOTAL PETROLEUM HYDROCARBONS (TPH) IN SOILS ANALYSES
mg/kg

SITE: WAMPUS MILFORD ASSOCIATES
CASE: 06120038 - 06120041
LABORATORY: OEME

NOT VALIDATED DATA

SAMPLE LOCATION:	SS-33	SS-38	SS-44	SS-48	SS-51	SS-55
SAMPLE NUMBER:	D18906	D18911	D18917	D19113	D19116	D19121
LABORATORY NUMBER:	AA68395	AA68400	AA68410	AA68414	AA68417	AA68435

ORGANIC ANALYTES	METHOD	REPORTING LIMIT							
TPH	8015	33.3	ND	1860	650	2240	465	83.1	

DILUTION FACTOR:	2	2	1	5	1	1
PERCENT SOLIDS:	38	40	18	52	30	69
DATE SAMPLED:	12/19/2006	12/19/2006	12/19/2006	12/20/2006	12/19/2006	12/19/2006
DATE EXTRACTED:	12/27/2006	12/27/2006	12/30/2006	12/30/2006	12/27/2006	12/30/2006
DATE ANALYZED:	12/30/2006	12/29/2006	1/02/2007	1/03/2007	12/30/2006	1/03/2007

NOTES:

- 1) METHOD = EPA/SW-846 8082.
- 2) ND = Not Detected.

TABLE 2

POLYCHLORINATED BIPHENYLS (PCB) IN SOILS ANALYSES
mg/kg

SITE: WAMPUS MILFORD ASSOCIATES
CASE: 06120038, 06120039
LABORATORY: OEME

NOT VALIDATED DATA

SAMPLE LOCATION:	SS-01	SS-04	SS-08	SS-13	SS-18	SS-23	SS-28
SAMPLE NUMBER:	D15850	D18004	D18920	D18925	D18867	D18896	D18901
LABORATORY NUMBER:	AA68363	AA68366	AA68370	AA68375	AA68380	AA68385	AA68390

ORGANIC ANALYTES	METHOD	REPORTING LIMIT	SS-01	SS-04	SS-08	SS-13	SS-18	SS-23	SS-28
Aroclor-1016	8082	0.10	ND	ND	ND	ND	ND	ND	ND
Aroclor-1221	8082	0.10	ND	ND	ND	ND	ND	ND	ND
Aroclor-1232	8082	0.10	ND	ND	ND	ND	ND	ND	ND
Aroclor-1242	8082	0.10	1.1	ND	ND	ND	ND	ND	ND
Aroclor-1248	8082	0.10	ND	ND	ND	ND	ND	ND	ND
Aroclor-1254	8082	0.10	0.89	ND	ND	ND	ND	ND	ND
Aroclor-1260	8082	0.10	ND	ND	ND	ND	ND	ND	ND
Aroclor-1262	8082	0.10	ND	ND	ND	ND	ND	ND	ND
Aroclor-1268	8082	0.10	ND	ND	ND	ND	ND	ND	ND

DILUTION FACTOR:	1	1	1	1	1	1	1
PERCENT SOLIDS:	NA	79	75	78	65	72	60
DATE SAMPLED:	12/19/2006	12/19/2006	12/19/2006	12/19/2006	12/19/2006	12/19/2006	12/19/2006
DATE EXTRACTED:	12/28/2006	12/27/2006	12/27/2006	12/27/2006	12/27/2006	12/27/2006	12/27/2006
DATE ANALYZED:	1/10/2007	1/17/2007	1/17/2007	1/17/2007	1/17/2007	1/8/2007	1/8/2007

NOTES:

- 1) METHOD = EPA/SW-846 8082.
- 2) ND = Not Detected.

TABLE 2

POLYCHLORINATED BIPHENYLS (PCB) IN SOILS ANALYSES
mg/kg

SITE: WAMPUS MILFORD ASSOCIATES
CASE: 06120038, 06120039
LABORATORY: OEME

NOT VALIDATED DATA

SAMPLE LOCATION:	SS-33	SS-38	SS-44	SS-48	SS-51	SS-55
SAMPLE NUMBER:	D18906	D18911	D18917	D19113	D19116	D19121
LABORATORY NUMBER:	AA68395	AA68400	AA68403	AA68450	AA68404	AA68406

ORGANIC ANALYTES	METHOD	REPORTING LIMIT	SS-33	SS-38	SS-44	SS-48	SS-51	SS-55
Aroclor-1016	8082	0.10	ND	ND	ND	ND	ND	ND
Aroclor-1221	8082	0.10	ND	ND	ND	ND	ND	ND
Aroclor-1232	8082	0.10	ND	ND	ND	ND	ND	ND
Aroclor-1242	8082	0.10	ND	ND	ND	ND	ND	ND
Aroclor-1248	8082	0.10	ND	ND	ND	ND	ND	ND
Aroclor-1254	8082	0.10	0.16	ND	0.36	0.26	0.29	ND
Aroclor-1260	8082	0.10	ND	ND	ND	ND	ND	ND
Aroclor-1262	8082	0.10	ND	ND	ND	ND	ND	ND
Aroclor-1268	8082	0.10	ND	ND	ND	ND	ND	ND

DILUTION FACTOR:	1	1	1	1	1	1
PERCENT SOLIDS:	57	49	27	49	40	69
DATE SAMPLED:	12/19/2006	12/19/2006	12/19/2006	12/20/2006	12/19/2006	12/19/2006
DATE EXTRACTED:	12/27/2006	12/27/2006	12/27/2006	12/27/2006	12/27/2006	12/27/2006
DATE ANALYZED:	1/17/2007	1/17/2007	1/17/2007	1/17/2007	1/17/2007	1/17/2007

NOTES:

- 1) METHOD = EPA/SW-846 8082.
- 2) ND = Not Detected.

TABLE 3

POLYCYCLIC AROMATIC HYDROCARBONS (PAH) IN SOILS ANALYSES
ug/kg

SITE: WAMPUS MILFORD ASSOCIATES
CASE: 06120038 - 06120042
LABORATORY: OEME

NOT VALIDATED DATA

SAMPLE LOCATION:	SS-01	SS-02	SS-03	SS-04	SS-05	SS-06	SS-07
SAMPLE NUMBER:	D15850	D15851	D15852	D18004	D18005	D18006	D18919
LABORATORY NUMBER:	AA68363	AA68364	AA68365	AA68366	AA68367	AA68368	AA68369

ORGANIC ANALYTES	METHOD	REPORTING LIMIT	SS-01	SS-02	SS-03	SS-04	SS-05	SS-06	SS-07
Acenaphthene	8270	220	ND	ND	ND	ND	ND	ND	ND
Acenaphthylene	8270	220	ND	ND	ND	ND	ND	ND	ND
Anthracene	8270	220	ND	ND	ND	ND	ND	ND	ND
Benzo(a)anthracene	8270	220	3600	3700	4100	ND	5700	ND	ND
Benzo(a)pyrene	8270	220	2500	3000	3000	ND	3900	ND	ND
Benzo(b)fluoranthene	8270	220	1700	4900	4700	ND	7600	ND	ND
Benzo(g,h,i)perylene	8270	220	2400	3200	2700	ND	4100	ND	ND
Benzo(k)fluoranthene	8270	220	1900	2300	1800	ND	1300	ND	ND
Chrysene	8270	220	5800	3900	3900	ND	5400	ND	ND
Dibenz(a,h)anthracene	8270	220	ND	ND	ND	ND	ND	ND	ND
Fluoranthene	8270	220	ND	8100	8600	610	12000	ND	ND
Fluorene	8270	220	ND	ND	ND	ND	ND	ND	ND
Indeno(1,2,3-cd)pyrene	8270	220	2400	3400	3200	ND	4300	ND	ND
Naphthalene	8270	220	ND	ND	ND	ND	ND	ND	ND
Phenanthrene	8270	220	ND	2800	2700	ND	4200	ND	ND
Pyrene	8270	220	2000	6800	6700	390	9600	1600	ND

DILUTION FACTOR:	1	1	1	1	1	1	1
PERCENT SOLIDS:	18	35	28	78	29	25	34
DATE SAMPLED:	12/19/2006	12/19/2006	12/19/2006	12/19/2006	12/19/2006	12/19/2006	12/19/2006
DATE EXTRACTED:	12/26/2006	12/26/2006	12/26/2006	12/26/2006	12/26/2006	12/26/2006	12/26/2006
DATE ANALYZED:	1/3/2007	1/3/2007	1/3/2007	1/3/2007	1/3/2007	1/3/2007	1/3/2007

NOTES:

- 1) METHOD = EPA/SW-846 8270.
2) ND = Not Detected.

TABLE 3

POLYCYCLIC AROMATIC HYDROCARBONS (PAH) IN SOILS ANALYSES
ug/kg

SITE: WAMPUS MILFORD ASSOCIATES
CASE: 06120038 - 06120042
LABORATORY: OEME

NOT VALIDATED DATA

SAMPLE LOCATION:	SS-08	SS-09	SS-10	SS-11	SS-12	SS-13	SS-14
SAMPLE NUMBER:	D18920	D18921	D18922	D18923	D18924	D18925	D18926
LABORATORY NUMBER:	AA68370	AA68371	AA68372	AA68373	AA68374	AA68375	AA68376

ORGANIC ANALYTES	METHOD	REPORTING LIMIT	SS-08	SS-09	SS-10	SS-11	SS-12	SS-13	SS-14
Acenaphthene	8270	220	ND	ND	ND	ND	ND	ND	ND
Acenaphthylene	8270	220	ND	ND	ND	ND	ND	ND	ND
Anthracene	8270	220	ND	ND	ND	ND	ND	ND	ND
Benzo(a)anthracene	8270	220	570	2000	ND	1600	ND	ND	2900
Benzo(a)pyrene	8270	220	470	1400	ND	ND	ND	ND	2300
Benzo(b)fluoranthene	8270	220	600	2000	ND	ND	ND	ND	2800
Benzo(g,h,i)perylene	8270	220	320	1000	ND	ND	ND	ND	2000
Benzo(k)fluoranthene	8270	220	300	ND	ND	ND	ND	ND	1500
Chrysene	8270	220	640	1700	ND	ND	ND	ND	2700
Dibenz(a,h)anthracene	8270	220	ND	ND	ND	ND	ND	ND	ND
Fluoranthene	8270	220	1500	5100	ND	2000	ND	ND	6400
Fluorene	8270	220	ND	ND	ND	ND	ND	ND	ND
Indeno(1,2,3-cd)pyrene	8270	220	390	1200	ND	ND	ND	ND	2400
Naphthalene	8270	220	ND	ND	ND	ND	ND	ND	ND
Phenanthrene	8270	220	390	1900	ND	ND	ND	ND	2100
Pyrene	8270	220	940	3500	ND	2400	ND	ND	5000

DILUTION FACTOR:	1	1	1	1	1	1	1	1
PERCENT SOLIDS:	76	34	88	36	63	80	33	
DATE SAMPLED:	12/19/2006	12/19/2006	12/19/2006	12/19/2006	12/19/2006	12/19/2006	12/19/2006	12/19/2006
DATE EXTRACTED:	12/26/2006	12/26/2006	12/26/2006	12/26/2006	12/26/2006	12/26/2006	12/26/2006	12/26/2006
DATE ANALYZED:	1/3/2007	1/3/2007	1/4/2007	1/4/2007	1/4/2007	1/4/2007	1/4/2007	1/4/2007

NOTES:

- 1) METHOD = EPA/SW-846 8270.
- 2) ND = Not Detected.

TABLE 3

POLYCYCLIC AROMATIC HYDROCARBONS (PAH) IN SOILS ANALYSES
ug/kg

SITE: WAMPUS MILFORD ASSOCIATES
CASE: 06120038 - 06120042
LABORATORY: OEME

NOT VALIDATED DATA

SAMPLE LOCATION:	SS-15	SS-16	SS-17	SS-18	SS-19	SS-20	SS-21
SAMPLE NUMBER:	D18927	D18865	D18866	D18867	D18868	D18869	D18870
LABORATORY NUMBER:	AA68377	AA68378	AA68379	AA68380	AA68381	AA68382	AA68383

ORGANIC ANALYTES	METHOD	REPORTING LIMIT	SS-15	SS-16	SS-17	SS-18	SS-19	SS-20	SS-21
Acenaphthene	8270	220	ND	ND	ND	ND	ND	ND	ND
Acenaphthylene	8270	220	ND	ND	ND	ND	ND	ND	ND
Anthracene	8270	220	ND	ND	ND	ND	ND	ND	ND
Benzo(a)anthracene	8270	220	ND	1600	1300	880	4600	ND	ND
Benzo(a)pyrene	8270	220	ND	ND	ND	530	3100	ND	ND
Benzo(b)fluoranthene	8270	220	ND	ND	1200	820	4400	ND	1100
Benzo(g,h,i)perylene	8270	220	ND	ND	ND	480	3200	ND	750
Benzo(k)fluoranthene	8270	220	ND	ND	ND	ND	1500	ND	ND
Chrysene	8270	220	ND	ND	1100	1100	4000	ND	880
Dibenz(a,h)anthracene	8270	220	ND	ND	ND	ND	ND	ND	ND
Fluoranthene	8270	220	ND	ND	2100	2300	9800	900	1500
Fluorene	8270	220	ND	ND	ND	ND	ND	ND	ND
Indeno(1,2,3-cd)pyrene	8270	220	ND	ND	1100	600	3700	ND	770
Naphthalene	8270	220	ND	ND	ND	ND	ND	ND	ND
Phenanthrene	8270	220	ND	ND	ND	ND	3700	ND	620
Pyrene	8270	220	ND	2000	2000	1600	7500	ND	1500

DILUTION FACTOR:	1	1	1	1	1	1	1	1	1
PERCENT SOLIDS:	78	37	36	49	35	48	49		
DATE SAMPLED:	12/19/2006	12/19/2006	12/19/2006	12/19/2006	12/19/2006	12/19/2006	12/19/2006	12/19/2006	12/19/2006
DATE EXTRACTED:	12/26/2006	12/26/2006	12/26/2006	12/26/2006	12/26/2006	12/26/2006	12/26/2006	12/26/2006	12/27/2006
DATE ANALYZED:	1/4/2007	1/4/2007	1/4/2007	1/5/2007	1/5/2007	1/5/2007	1/5/2007	1/8/2007	

NOTES:

- 1) METHOD = EPA/SW-846 8270.
- 2) ND = Not Detected.

TABLE 3

POLYCYCLIC AROMATIC HYDROCARBONS (PAH) IN SOILS ANALYSES
ug/kg

SITE: WAMPUS MILFORD ASSOCIATES
CASE: 06120038 - 06120042
LABORATORY: OEME

NOT VALIDATED DATA

SAMPLE LOCATION:	SS-22	SS-23	SS-24	SS-25	SS-26	SS-27	SS-28
SAMPLE NUMBER:	D18895	D18896	D18897	D18898	D18899	D18900	D18901
LABORATORY NUMBER:	AA68384	AA68385	AA68386	AA68387	AA68388	AA68389	AA68390

ORGANIC ANALYTES	METHOD	REPORTING LIMIT	SS-22	SS-23	SS-24	SS-25	SS-26	SS-27	SS-28
Acenaphthene	8270	220	ND	ND	ND	ND	ND	ND	ND
Acenaphthylene	8270	220	ND	ND	ND	ND	ND	ND	ND
Anthracene	8270	220	ND	ND	ND	ND	ND	ND	ND
Benzo(a)anthracene	8270	220	1700	310	5000	ND	510	ND	740
Benzo(a)pyrene	8270	220	1500	210	4500	ND	370	ND	520
Benzo(b)fluoranthene	8270	220	2900	370	7900	ND	530	300	920
Benzo(g,h,i)perylene	8270	220	1700	ND	4300	ND	380	ND	490
Benzo(k)fluoranthene	8270	220	850	ND	2100	ND	ND	ND	280
Chrysene	8270	220	2100	270	6900	ND	540	ND	780
Dibenz(a,h)anthracene	8270	220	ND	ND	ND	ND	ND	ND	ND
Fluoranthene	8270	220	4000	580	11000	ND	1000	360	1800
Fluorene	8270	220	ND	ND	ND	ND	ND	ND	ND
Indeno(1,2,3-cd)pyrene	8270	220	1700	ND	4700	ND	420	ND	530
Naphthalene	8270	220	ND	ND	ND	ND	ND	ND	ND
Phenanthrene	8270	220	1100	250	3600	ND	ND	ND	750
Pyrene	8270	220	3300	500	9800	ND	990	370	1400

DILUTION FACTOR:	1	1	1	1	1	1	1	1
PERCENT SOLIDS:	47	78	31	57	81	86	65	
DATE SAMPLED:	12/19/2006	12/19/2006	12/19/2006	12/19/2006	12/19/2006	12/19/2006	12/19/2006	12/19/2006
DATE EXTRACTED:	12/27/2006	12/27/2006	12/27/2006	12/27/2006	12/27/2006	12/27/2006	12/27/2006	12/27/2006
DATE ANALYZED:	1/8/2007	1/8/2007	1/8/2007	1/8/2007	1/8/2007	1/8/2007	1/8/2007	1/8/2007

NOTES:

- 1) METHOD = EPA/SW-846 8270.
- 2) ND = Not Detected.

TABLE 3

POLYCYCLIC AROMATIC HYDROCARBONS (PAH) IN SOILS ANALYSES
ug/kg

SITE: WAMPUS MILFORD ASSOCIATES
CASE: 06120038 - 06120042
LABORATORY: OEME

NOT VALIDATED DATA

SAMPLE LOCATION:	SS-29	SS-30	SS-31	SS-32	SS-33	SS-34	SS-35
SAMPLE NUMBER:	D18902	D18903	D18904	D18905	D18906	D18907	D18908
LABORATORY NUMBER:	AA68391	AA68392	AA68393	AA68394	AA68395	AA68396	AA68397

ORGANIC ANALYTES	METHOD	REPORTING LIMIT	SS-29	SS-30	SS-31	SS-32	SS-33	SS-34	SS-35
Acenaphthene	8270	220	ND	ND	ND	ND	ND	ND	ND
Acenaphthylene	8270	220	ND	ND	ND	ND	ND	ND	ND
Anthracene	8270	220	ND	ND	ND	ND	800	ND	ND
Benzo(a)anthracene	8270	220	1700	540	620	2800	3900	1500	ND
Benzo(a)pyrene	8270	220	1300	410	460	2600	2600	1400	ND
Benzo(b)fluoranthene	8270	220	2300	ND	730	4500	4800	2100	320
Benzo(g,h,i)perylene	8270	220	1200	420	510	2300	1300	ND	ND
Benzo(k)fluoranthene	8270	220	ND	1000	ND	1700	2400	1300	ND
Chrysene	8270	220	1800	580	700	3900	3600	1700	ND
Dibenz(a,h)anthracene	8270	220	ND	ND	ND	ND	530	ND	ND
Fluoranthene	8270	220	3600	1100	1300	7100	7400	3600	400
Fluorene	8270	220	ND	ND	ND	ND	ND	ND	ND
Indeno(1,2,3-cd)pyrene	8270	220	1300	440	490	2400	1800	1200	ND
Naphthalene	8270	220	ND	ND	ND	ND	ND	ND	ND
Phenanthrene	8270	220	1200	370	ND	2500	3300	1100	ND
Pyrene	8270	220	3200	1000	1300	5900	4400	1900	380

DILUTION FACTOR:	1	1	1	1	1	1	1
PERCENT SOLIDS:	27	69	56	31	48	28	75
DATE SAMPLED:	12/19/2006	12/19/2006	12/19/2006	12/19/2006	12/19/2006	12/19/2006	12/19/2006
DATE EXTRACTED:	12/27/2006	12/27/2006	12/27/2006	12/27/2006	12/27/2006	12/27/2006	12/27/2006
DATE ANALYZED:	1/8/2007	1/8/2007	1/9/2007	1/9/2007	1/17/2007	1/17/2007	1/4/2007

NOTES:

- 1) METHOD = EPA/SW-846 8270.
- 2) ND = Not Detected.

TABLE 3

POLYCYCLIC AROMATIC HYDROCARBONS (PAH) IN SOILS ANALYSES
ug/kg

SITE: WAMPUS MILFORD ASSOCIATES
CASE: 06120038 - 06120042
LABORATORY: OEME

NOT VALIDATED DATA

SAMPLE LOCATION:	SS-36	SS-37	SS-38	SS-39	SS-40	SS-41	SS-42
SAMPLE NUMBER:	D18909	D18910	D18911	D18912	D18913	D18914	D18915
LABORATORY NUMBER:	AA68398	AA68399	AA68400	AA68401	AA68402	AA68407	AA68408

ORGANIC ANALYTES	METHOD	REPORTING LIMIT	SS-36	SS-37	SS-38	SS-39	SS-40	SS-41	SS-42
Acenaphthene	8270	220	ND	ND	ND	ND	ND	ND	ND
Acenaphthylene	8270	220	ND	ND	ND	ND	ND	ND	ND
Anthracene	8270	220	ND	950	750	ND	ND	ND	1100
Benzo(a)anthracene	8270	220	4100	4700	4600	390	1600	4600	6000
Benzo(a)pyrene	8270	220	3400	4200	3400	370	1600	4900	5700
Benzo(b)fluoranthene	8270	220	4800	6800	4200	640	2400	9000	8600
Benzo(g,h,i)perylene	8270	220	2300	4000	2900	ND	1400	4900	5400
Benzo(k)fluoranthene	8270	220	1200	1500	1800	ND	810	2600	3300
Chrysene	8270	220	4400	5000	5900	450	2100	4200	6200
Dibenz(a,h)anthracene	8270	220	580	890	ND	ND	ND	ND	ND
Fluoranthene	8270	220	8000	8600	6300	780	ND	12000	16000
Fluorene	8270	220	ND	ND	ND	ND	ND	ND	ND
Indeno(1,2,3-cd)pyrene	8270	220	2700	4000	3500	ND	1600	4900	5200
Naphthalene	8270	220	ND	ND	ND	ND	ND	ND	ND
Phenanthrene	8270	220	2500	4800	3700	ND	ND	3500	5000
Pyrene	8270	220	7100	8000	10000	700	3300	8500	10000

DILUTION FACTOR:	1	1	1	1	1	1	1
PERCENT SOLIDS:	44	35	41	70	34	28	30
DATE SAMPLED:	12/19/2006	12/19/2006	12/19/2006	12/19/2006	12/19/2006	12/19/2006	12/19/2006
DATE EXTRACTED:	12/27/2006	12/27/2006	12/27/2006	12/27/2006	12/27/2006	12/28/2006	12/28/2006
DATE ANALYZED:	1/4/2007	1/4/2007	1/4/2007	1/4/2007	1/4/2007	1/10/2007	1/10/2007

NOTES:

- 1) METHOD = EPA/SW-846 8270.
- 2) ND = Not Detected.

TABLE 3

POLYCYCLIC AROMATIC HYDROCARBONS (PAH) IN SOILS ANALYSES
ug/kg

SITE: WAMPUS MILFORD ASSOCIATES
CASE: 06120038 - 06120042
LABORATORY: OEME

NOT VALIDATED DATA

SAMPLE LOCATION:	SS-43	SS-44	SS-45	SS-46	SS-47	SS-48	SS-49
SAMPLE NUMBER:	D18916	D18917	D18918	D19111	D19112	D19113	D19114
LABORATORY NUMBER:	AA68409	AA68410	AA68411	AA68412	AA68413	AA68414	AA68415

ORGANIC ANALYTES	METHOD	REPORTING LIMIT	SS-43	SS-44	SS-45	SS-46	SS-47	SS-48	SS-49
Acenaphthene	8270	220	ND	ND	ND	ND	ND	500	ND
Acenaphthylene	8270	220	ND	ND	ND	ND	ND	ND	ND
Anthracene	8270	220	640	ND	ND	ND	ND	1400	ND
Benzo(a)anthracene	8270	220	3000	2500	ND	ND	330	7600	ND
Benzo(a)pyrene	8270	220	2600	2100	ND	ND	350	7400	ND
Benzo(b)fluoranthene	8270	220	3900	3400	ND	260	510	10000	340
Benzo(g,h,i)perylene	8270	220	2200	1800	ND	ND	ND	4500	ND
Benzo(k)fluoranthene	8270	220	1100	1200	ND	ND	ND	3500	ND
Chrysene	8270	220	3100	2400	ND	ND	370	8600	ND
Dibenz(a,h)anthracene	8270	220	ND	ND	ND	ND	ND	1200	ND
Fluoranthene	8270	220	7600	6200	ND	310	800	17000	370
Fluorene	8270	220	ND	ND	ND	ND	ND	ND	ND
Indeno(1,2,3-cd)pyrene	8270	220	2400	1900	ND	ND	ND	4600	ND
Naphthalene	8270	220	ND	ND	ND	ND	ND	ND	ND
Phenanthrene	8270	220	2900	1800	ND	ND	470	6400	ND
Pyrene	8270	220	5100	4000	ND	330	820	15000	400

DILUTION FACTOR:	1	1	1	1	1	1	1
PERCENT SOLIDS:	34	37	73	90	86	46	90
DATE SAMPLED:	12/19/2006	12/19/2006	12/19/2006	12/19/2006	12/19/2006	12/20/2006	12/19/2006
DATE EXTRACTED:	12/28/2006	12/28/2006	12/28/2006	12/28/2006	12/28/2006	12/28/2006	12/28/2006
DATE ANALYZED:	1/10/2007	1/10/2007	1/10/2007	1/10/2007	1/10/2007	1/10/2007	1/10/2007

NOTES:

- 1) METHOD = EPA/SW-846 8270.
- 2) ND = Not Detected.

TABLE 3

POLYCYCLIC AROMATIC HYDROCARBONS (PAH) IN SOILS ANALYSES
ug/kg

SITE: WAMPUS MILFORD ASSOCIATES
CASE: 06120038 - 06120042
LABORATORY: OEME

NOT VALIDATED DATA

SAMPLE LOCATION:	SS-50	SS-51	SS-52	SS-53	SS-54	SS-55	SS-56
SAMPLE NUMBER:	D19115	D19116	D19117	D19118	D19120	D19121	D19122
LABORATORY NUMBER:	AA68416	AA68417	AA68418	AA68419	AA68434	AA68435	AA68436

ORGANIC ANALYTES	METHOD	REPORTING LIMIT	SS-50	SS-51	SS-52	SS-53	SS-54	SS-55	SS-56
Acenaphthene	8270	220	ND	6100	ND	ND	ND	460	ND
Acenaphthylene	8270	220	ND	ND	ND	ND	ND	ND	ND
Anthracene	8270	220	ND	13000	ND	ND	ND	1200	ND
Benzo(a)anthracene	8270	220	ND	24000	ND	ND	ND	4300	430
Benzo(a)pyrene	8270	220	ND	21000	ND	ND	ND	3700	430
Benzo(b)fluoranthene	8270	220	ND	28000	260	310	ND	5100	580
Benzo(g,h,i)perylene	8270	220	ND	11000	ND	ND	ND	2000	ND
Benzo(k)fluoranthene	8270	220	ND	7600	ND	ND	ND	1800	ND
Chrysene	8270	220	ND	23000	ND	ND	ND	4600	460
Dibenz(a,h)anthracene	8270	220	ND	2900	ND	ND	ND	540	ND
Fluoranthene	8270	220	ND	66000	450	380	ND	12000	770
Fluorene	8270	220	ND	5400	ND	ND	ND	370	ND
Indeno(1,2,3-cd)pyrene	8270	220	ND	11000	ND	ND	ND	2000	ND
Naphthalene	8270	220	ND	3700	ND	ND	ND	ND	ND
Phenanthrene	8270	220	ND	52000	570	ND	ND	5200	430
Pyrene	8270	220	280	56000	440	390	ND	11000	880

DILUTION FACTOR:	1	1	1	1	1	1	1
PERCENT SOLIDS:	91	53	92	91	134*	58	88
DATE SAMPLED:	12/19/2006	12/19/2006	12/19/2006	12/19/2006	12/19/2006	12/19/2006	12/19/2006
DATE EXTRACTED:	12/28/2006	12/28/2006	12/28/2006	12/28/2006	12/28/2006	12/28/2006	12/28/2006
DATE ANALYZED:	1/10/2007	1/10/2007	1/10/2007	1/10/2007	1/10/2007	1/10/2007	1/10/2007

NOTES:

- 1) METHOD = EPA/SW-846 8270.
- 2) ND = Not Detected.

TABLE 3

POLYCYCLIC AROMATIC HYDROCARBONS (PAH) IN SOILS ANALYSES
ug/kg

SITE: WAMPUS MILFORD ASSOCIATES
CASE: 06120038 - 06120042
LABORATORY: OEME

NOT VALIDATED DATA

SAMPLE LOCATION:	SS-57	SS-58	SS-59	SS-60	SS-61	SS-62	SS-00
SAMPLE NUMBER:	D19123	D19124	D19125	D19126	D19127	D19128	D19129
LABORATORY NUMBER:	AA68437	AA68438	AA68439	AA68440	AA68441	AA68442	AA68443

ORGANIC ANALYTES	METHOD	REPORTING LIMIT	SS-57	SS-58	SS-59	SS-60	SS-61	SS-62	SS-00
Acenaphthene	8270	220	ND	ND	ND	ND	ND	ND	ND
Acenaphthylene	8270	220	ND	ND	ND	ND	ND	ND	ND
Anthracene	8270	220	ND	ND	ND	ND	ND	ND	ND
Benzo(a)anthracene	8270	220	700	ND	700	1800	ND	ND	ND
Benzo(a)pyrene	8270	220	470	ND	620	1800	ND	ND	ND
Benzo(b)fluoranthene	8270	220	710	ND	630	2500	ND	ND	ND
Benzo(g,h,i)perylene	8270	220	420	ND	390	1100	ND	ND	ND
Benzo(k)fluoranthene	8270	220	520	ND	450	1400	ND	ND	ND
Chrysene	8270	220	710	ND	700	2200	ND	ND	ND
Dibenz(a,h)anthracene	8270	220	ND	ND	ND	ND	ND	ND	ND
Fluoranthene	8270	220	1600	440	1700	5300	ND	ND	ND
Fluorene	8270	220	ND	ND	ND	ND	ND	ND	ND
Indeno(1,2,3-cd)pyrene	8270	220	600	330	610	1600	ND	ND	ND
Naphthalene	8270	220	ND	ND	ND	ND	ND	ND	ND
Phenanthrene	8270	220	610	ND	520	1900	ND	ND	ND
Pyrene	8270	220	940	ND	920	3400	ND	ND	ND

DILUTION FACTOR:	1	1	1	1	1	1	1	1
PERCENT SOLIDS:	91	91	90	48	67	90	36	
DATE SAMPLED:	12/19/2006	12/19/2006	12/19/2006	12/19/2006	12/19/2006	12/19/2006	12/19/2006	12/19/2006
DATE EXTRACTED:	12/28/2006	12/28/2006	12/28/2006	12/28/2006	12/28/2006	12/28/2006	12/28/2006	12/28/2006
DATE ANALYZED:	1/9/2007	1/9/2007	1/9/2007	1/9/2007	1/9/2007	1/9/2007	1/9/2007	1/9/2007

NOTES:

- 1) METHOD = EPA/SW-846 8270.
- 2) ND = Not Detected.

TABLE 4

POLYCYCLIC AROMATIC HYDROCARBONS (PAH) IN SOILS ANALYSES
ug/kg

SITE: WAMPUS MILFORD ASSOCIATES
CASE: 06120040, 06120041
LABORATORY: OEME

NOT VALIDATED DATA

SAMPLE LOCATION:	SB-01 (0-1)	SB-02 (0-1)	SB-03 (0-1)	SB-04 (0-1)	SB-05 (0-1)	SB-07 (0-1)	SB-08 (0-1)
SAMPLE NUMBER:	D19133	D19135	D19138	D19139	D19140	D19247	D19249
LABORATORY NUMBER:	AA68420	AA68421	AA68422	AA68423	AA68424	AA68425	AA68426

ORGANIC ANALYTES	METHOD	REPORTING LIMIT	SB-01 (0-1)	SB-02 (0-1)	SB-03 (0-1)	SB-04 (0-1)	SB-05 (0-1)	SB-07 (0-1)	SB-08 (0-1)
Acenaphthene	8270	250	740	ND	ND	ND	ND	ND	ND
Acenaphthylene	8270	250	ND	ND	ND	ND	ND	ND	ND
Anthracene	8270	250	1500	ND	ND	ND	ND	ND	ND
Benzo(a)anthracene	8270	250	2500	ND	ND	ND	ND	ND	ND
Benzo(a)pyrene	8270	250	2300	ND	ND	ND	ND	ND	ND
Benzo(b)fluoranthene	8270	250	2900	ND	ND	ND	ND	ND	ND
Benzo(g,h,i)perylene	8270	250	1400	ND	ND	ND	ND	ND	ND
Benzo(k)fluoranthene	8270	250	1100	ND	ND	ND	ND	ND	ND
Chrysene	8270	250	2300	ND	ND	ND	ND	ND	ND
Dibenz(a,h)anthracene	8270	250	360	ND	ND	ND	ND	ND	ND
Fluoranthene	8270	250	6000	ND	ND	ND	ND	ND	ND
Fluorene	8270	250	950	ND	ND	ND	ND	ND	ND
Indeno(1,2,3-cd)pyrene	8270	250	1400	ND	ND	ND	ND	ND	ND
Naphthalene	8270	250	1000	ND	ND	ND	ND	ND	ND
Phenanthrene	8270	250	5800	ND	ND	ND	ND	ND	ND
Pyrene	8270	250	5100	ND	ND	ND	ND	ND	ND

DILUTION FACTOR:	1	1	1	1	1	1	1
PERCENT SOLIDS:	87	86	77	72	81	73	77
DATE SAMPLED:	12/20/2006	12/20/2006	12/20/2006	12/20/2006	12/20/2006	12/20/2006	12/20/2006
DATE EXTRACTED:	12/28/2006	12/28/2006	12/28/2006	12/28/2006	12/28/2006	12/28/2006	12/28/2006
DATE ANALYZED:	1/10/2007	1/10/2007	1/10/2007	1/10/2007	1/10/2007	1/10/2007	1/10/2007

NOTES:

- 1) METHOD = EPA/SW-846 8270.
- 2) ND = Not Detected.

TABLE 4

POLYCYCLIC AROMATIC HYDROCARBONS (PAH) IN SOILS ANALYSES
ug/kg

SITE: WAMPUS MILFORD ASSOCIATES
CASE: 06120040, 06120041
LABORATORY: OEME

NOT VALIDATED DATA

SAMPLE LOCATION:	SB-09 (0-1)	SB-10 (0-1)	SB-11 (0-1)	SB-01 (1-2)	SB-02 (1-2)	SB-03 (1-2)	SB-07 (1-2)
SAMPLE NUMBER:	D19250	D19252	D19254	D19134	D19136	D19137	D19247
LABORATORY NUMBER:	AA68427	AA68428	AA68429	AA68447	AA68448	AA68449	AA68451

ORGANIC ANALYTES	METHOD	REPORTING LIMIT	SB-09 (0-1)	SB-10 (0-1)	SB-11 (0-1)	SB-01 (1-2)	SB-02 (1-2)	SB-03 (1-2)	SB-07 (1-2)
Acenaphthene	8270	250	ND	ND	ND	ND	ND	ND	ND
Acenaphthylene	8270	250	ND	ND	ND	ND	ND	ND	ND
Anthracene	8270	250	ND	ND	ND	ND	ND	ND	ND
Benzo(a)anthracene	8270	250	ND	ND	ND	ND	270	410	830
Benzo(a)pyrene	8270	250	ND	ND	ND	ND	290	400	490
Benzo(b)fluoranthene	8270	250	ND	ND	ND	ND	500	510	620
Benzo(g,h,i)perylene	8270	250	ND	ND	ND	ND	ND	ND	460
Benzo(k)fluoranthene	8270	250	ND	ND	ND	ND	ND	300	450
Chrysene	8270	250	ND	ND	ND	ND	380	410	720
Dibenz(a,h)anthracene	8270	250	ND	ND	ND	ND	ND	ND	ND
Fluoranthene	8270	250	ND	ND	ND	500	840	860	1800
Fluorene	8270	250	ND	ND	ND	ND	ND	ND	ND
Indeno(1,2,3-cd)pyrene	8270	250	ND	ND	ND	290	360	370	680
Naphthalene	8270	250	ND	ND	ND	ND	ND	ND	ND
Phenanthrene	8270	250	ND	ND	ND	ND	290	ND	930
Pyrene	8270	250	ND	ND	ND	ND	450	490	1100

DILUTION FACTOR:	1	1	1	1	1	1	1	1	1
PERCENT SOLIDS:	77	79	58	85	85	73	69		
DATE SAMPLED:	12/20/2006	12/20/2006	12/20/2006	12/20/2006	12/20/2006	12/20/2006	12/20/2006	12/20/2006	12/20/2006
DATE EXTRACTED:	12/28/2006	12/28/2006	12/28/2006	12/28/2006	12/28/2006	12/28/2006	12/28/2006	12/28/2006	12/29/2006
DATE ANALYZED:	1/9/2007	1/9/2007	1/9/2007	1/9/2007	1/9/2007	1/9/2007	1/9/2007	1/9/2007	1/9/2007

NOTES:

- 1) METHOD = EPA/SW-846 8270.
- 2) ND = Not Detected.

TABLE 4

POLYCYCLIC AROMATIC HYDROCARBONS (PAH) IN SOILS ANALYSES
ug/kg

SITE: WAMPUS MILFORD ASSOCIATES
CASE: 06120040, 06120041
LABORATORY: OEME

NOT VALIDATED DATA

SAMPLE LOCATION:	SB-09 (1-2)	SB-10 (1-2)	SB-11 (1-2)
SAMPLE NUMBER:	D19251	D19253	D19255
LABORATORY NUMBER:	AA68452	AA68453	AA68454

ORGANIC ANALYTES	METHOD	REPORTING LIMIT			
Acenaphthene	8270	250	ND	ND	ND
Acenaphthylene	8270	250	ND	ND	ND
Anthracene	8270	250	ND	ND	ND
Benzo(a)anthracene	8270	250	ND	ND	ND
Benzo(a)pyrene	8270	250	ND	ND	ND
Benzo(b)fluoranthene	8270	250	ND	ND	ND
Benzo(g,h,i)perylene	8270	250	ND	ND	ND
Benzo(k)fluoranthene	8270	250	ND	ND	ND
Chrysene	8270	250	ND	ND	ND
Dibenz(a,h)anthracene	8270	250	ND	ND	ND
Fluoranthene	8270	250	ND	ND	ND
Fluorene	8270	250	ND	ND	ND
Indeno(1,2,3-cd)pyrene	8270	250	ND	ND	ND
Naphthalene	8270	250	ND	ND	ND
Phenanthrene	8270	250	ND	ND	ND
Pyrene	8270	250	ND	ND	ND

DILUTION FACTOR:	1	1	1
PERCENT SOLIDS:	78	77	86
DATE SAMPLED:	12/20/2006	12/20/2006	12/20/2006
DATE EXTRACTED:	12/29/2006	12/29/2006	12/29/2006
DATE ANALYZED:	1/9/2007	1/9/2007	1/9/2007

NOTES:

- 1) METHOD = EPA/SW-846 8270.
- 2) ND = Not Detected.

TABLE 5

POLYCYCLIC AROMATIC HYDROCARBONS (PAH) IN SEDIMENTS ANALYSES
ug/kg

SITE: WAMPUS MILFORD ASSOCIATES
CASE: 06120041
LABORATORY: OEME

NOT VALIDATED DATA

SAMPLE LOCATION:	SD-01	SD-02	SD-03
SAMPLE NUMBER:	D19130	D19131	D19132
LABORATORY NUMBER:	AA68444	AA68445	AA68446

ORGANIC ANALYTES	METHOD	REPORTING LIMIT			
Acenaphthene	8270	230	ND	ND	ND
Acenaphthylene	8270	230	ND	ND	ND
Anthracene	8270	230	ND	ND	ND
Benzo(a)anthracene	8270	230	ND	ND	ND
Benzo(a)pyrene	8270	230	ND	ND	ND
Benzo(b)fluoranthene	8270	230	ND	ND	ND
Benzo(g,h,i)perylene	8270	230	ND	ND	ND
Benzo(k)fluoranthene	8270	230	ND	ND	ND
Chrysene	8270	230	ND	ND	ND
Dibenz(a,h)anthracene	8270	230	ND	ND	ND
Fluoranthene	8270	230	ND	ND	ND
Fluorene	8270	230	ND	ND	ND
Indeno(1,2,3-cd)pyrene	8270	230	ND	ND	ND
Naphthalene	8270	230	ND	ND	ND
Phenanthrene	8270	230	ND	ND	ND
Pyrene	8270	230	ND	ND	ND

DILUTION FACTOR:	1	1	1
PERCENT SOLIDS:	21	23	21
DATE SAMPLED:	12/20/2006	12/20/2006	12/20/2006
DATE EXTRACTED:	12/28/2006	12/28/2006	12/28/2006
DATE ANALYZED:	1/9/2007	1/9/2007	1/9/2007

NOTES:

- 1) METHOD = EPA/SW-846 8270.
2) ND = Not Detected.

TABLE 6
METALS IN SOILS ANALYSES
 mg/kg

SITE: WAMPUS MILFORD ASSOCIATES
CASE: 06120038 - 06120042
LABORATORY: OEME

NOT VALIDATED DATA

SAMPLE LOCATION:	SS-01	SS-02	SS-03	SS-04	SS-05	SS-06	SS-07
SAMPLE NUMBER:	D15850	D15851	D15852	D18004	D18005	D18006	D18919
LABORATORY NUMBER:	AA68363	AA68364	AA68365	AA68366	AA68367	AA68368	AA68369
DATE SAMPLED:	12/19/2006	12/19/2006	12/19/2006	12/19/2006	12/19/2006	12/19/2006	12/19/2006

INORGANIC ANALYTES	METHOD	REPORTING LIMIT							
Beryllium	ICP	1.6	ND	ND	ND	ND	ND	ND	ND
Cadmium	ICP	2.0	560	72	120	25	73	13	37
Copper	ICP	4.0	18000	1000	1100	350	840	99	490
Lead	ICP	4.0	700	440	610	110	470	83	300
Nickel	ICP	4.0	290	110	190	52	130	27	67
Vanadium	ICP	2.0	67	88	69	13	71	26	50
Zinc	ICP	4.0	1400	490	360	78	260	98	110

NOTES:

- 1) METHOD = Inductively Coupled Plasma (ICP).
- 2) ND = Not Detected.

TABLE 6
METALS IN SOILS ANALYSES
 mg/kg

SITE: WAMPUS MILFORD ASSOCIATES
CASE: 06120038 - 06120042
LABORATORY: OEME

NOT VALIDATED DATA

SAMPLE LOCATION:	SS-08	SS-09	SS-10	SS-11	SS-12	SS-13	SS-14
SAMPLE NUMBER:	D18920	D18921	D18922	D18923	D18924	D18925	D18926
LABORATORY NUMBER:	AA68370	AA68371	AA68372	AA68373	AA68374	AA68375	AA68376
DATE SAMPLED:	12/19/2006	12/19/2006	12/19/2006	12/19/2006	12/19/2006	12/19/2006	12/19/2006

INORGANIC ANALYTES	METHOD	REPORTING LIMIT								
Beryllium	ICP	1.6	ND	ND	ND	ND	ND	ND	ND	ND
Cadmium	ICP	2.0	50	36	1.5	13	30	27	260	260
Copper	ICP	4.0	780	550	45	200	1000	530	3500	3500
Lead	ICP	4.0	330	310	9.9	210	520	230	710	710
Nickel	ICP	4.0	120	55	15	30	63	52	290	290
Vanadium	ICP	2.0	22	33	14	52	18	19	73	73
Zinc	ICP	4.0	110	100	24	76	54	68	290	290

NOTES:

- 1) METHOD = Inductively Coupled Plasma (ICP).
- 2) ND = Not Detected.

TABLE 6
METALS IN SOILS ANALYSES
mg/kg

SITE: WAMPUS MILFORD ASSOCIATES
CASE: 06120038 - 06120042
LABORATORY: OEME

NOT VALIDATED DATA

SAMPLE LOCATION:	SS-15	SS-16	SS-17	SS-18	SS-19	SS-20	SS-21
SAMPLE NUMBER:	D18927	D18865	D18866	D18867	D18868	D18869	D18870
LABORATORY NUMBER:	AA68377	AA68378	AA68379	AA68380	AA68381	AA68382	AA68383
DATE SAMPLED:	12/19/2006	12/19/2006	12/19/2006	12/19/2006	12/19/2006	12/19/2006	12/19/2006

INORGANIC ANALYTES	METHOD	REPORTING LIMIT								
Beryllium	ICP	1.6	ND	ND	ND	4.9	ND	ND	ND	ND
Cadmium	ICP	2.0	ND	10	42	890	270	5.3	13	
Copper	ICP	4.0	14	63	830	9200	3700	48	210	
Lead	ICP	4.0	11	64	460	6400	840	28	140	
Nickel	ICP	4.0	8.9	20	82	720	290	17	53	
Vanadium	ICP	2.0	11	20	28	58	110	16	30	
Zinc	ICP	4.0	17	100	170	530	430	72	110	

NOTES:

- 1) METHOD = Inductively Coupled Plasma (ICP).
- 2) ND = Not Detected.

TABLE 6
METALS IN SOILS ANALYSES
 mg/kg

SITE: WAMPUS MILFORD ASSOCIATES
CASE: 06120038 - 06120042
LABORATORY: OEME

NOT VALIDATED DATA

SAMPLE LOCATION:	SS-22	SS-23	SS-24	SS-25	SS-26	SS-27	SS-28
SAMPLE NUMBER:	D18895	D18896	D18897	D18898	D18899	D18900	D18901
LABORATORY NUMBER:	AA68384	AA68385	AA68386	AA68387	AA68388	AA68389	AA68390
DATE SAMPLED:	12/19/2006	12/19/2006	12/19/2006	12/19/2006	12/19/2006	12/19/2006	12/19/2006

INORGANIC ANALYTES	METHOD	REPORTING LIMIT								
Beryllium	ICP	1.6	ND	0.85	6.2	ND	ND	ND	ND	ND
Cadmium	ICP	2.0	23	30	270	3.2	20	7.4	70	70
Copper	ICP	4.0	530	640	5700	65	540	170	940	940
Lead	ICP	4.0	310	400	1900	19	200	50	360	360
Nickel	ICP	4.0	100	110	1300	15	110	50	150	150
Vanadium	ICP	2.0	39	23	250	11	54	28	30	30
Zinc	ICP	4.0	130	86	1100	28	170	86	120	120

NOTES:

- 1) METHOD = Inductively Coupled Plasma (ICP).
- 2) ND = Not Detected.

TABLE 6
METALS IN SOILS ANALYSES
mg/kg

SITE: WAMPUS MILFORD ASSOCIATES
CASE: 06120038 - 06120042
LABORATORY: OEME

NOT VALIDATED DATA

SAMPLE LOCATION:	SS-29	SS-30	SS-31	SS-32	SS-33	SS-34	SS-35
SAMPLE NUMBER:	D18902	D18903	D18904	D18905	D18906	D18907	D18908
LABORATORY NUMBER:	AA68391	AA68392	AA68393	AA68394	AA68395	AA68396	AA68397
DATE SAMPLED:	12/19/2006	12/19/2006	12/19/2006	12/19/2006	12/19/2006	12/19/2006	12/19/2006

INORGANIC ANALYTES	METHOD	REPORTING LIMIT								
Beryllium	ICP	1.6	2.1	1.9	ND	ND	1.1	1.6	ND	
Cadmium	ICP	2.0	80	140	10	91	75	110	1.4	
Copper	ICP	4.0	2600	2300	160	950	1300	2500	34	
Lead	ICP	4.0	1100	1900	74	620	480	470	21	
Nickel	ICP	4.0	230	290	52	380	180	220	13	
Vanadium	ICP	2.0	110	57	31	200	52	200	14	
Zinc	ICP	4.0	390	170	89	640	240	390	25	

NOTES:

- 1) METHOD = Inductively Coupled Plasma (ICP).
- 2) ND = Not Detected.

TABLE 6
METALS IN SOILS ANALYSES
 mg/kg

SITE: WAMPUS MILFORD ASSOCIATES
CASE: 06120038 - 06120042
LABORATORY: OEME

NOT VALIDATED DATA

SAMPLE LOCATION:	SS-36	SS-37	SS-38	SS-39	SS-40	SS-41	SS-42
SAMPLE NUMBER:	D18909	D18910	D18911	D18912	D18913	D18914	D18915
LABORATORY NUMBER:	AA68398	AA68399	AA68400	AA68401	AA68402	AA68407	AA68408
DATE SAMPLED:	12/19/2006	12/19/2006	12/19/2006	12/19/2006	12/19/2006	12/19/2006	12/19/2006

INORGANIC ANALYTES	METHOD	REPORTING LIMIT								
Beryllium	ICP	1.6	ND	ND	6.1	ND	ND	ND	ND	ND
Cadmium	ICP	2.0	39	76	740	30	4.1	110	72	
Copper	ICP	4.0	560	850	8700	340	470	790	420	
Lead	ICP	4.0	410	490	4100	190	130	240	230	
Nickel	ICP	4.0	160	170	1500	78	130	170	96	
Vanadium	ICP	2.0	75	110	89	64	42	100	110	
Zinc	ICP	4.0	260	510	1000	250	140	630	520	

NOTES:

- 1) METHOD = Inductively Coupled Plasma (ICP).
- 2) ND = Not Detected.

TABLE 6
METALS IN SOILS ANALYSES
 mg/kg

SITE: WAMPUS MILFORD ASSOCIATES
CASE: 06120038 - 06120042
LABORATORY: OEME

NOT VALIDATED DATA

SAMPLE LOCATION:	SS-43	SS-44	SS-45	SS-46	SS-47	SS-48	SS-49
SAMPLE NUMBER:	D18916	D18917	D18918	D19111	D19112	D19113	D19114
LABORATORY NUMBER:	AA68409	AA68410	AA68411	AA68412	AA68413	AA68414	AA68415
DATE SAMPLED:	12/19/2006	12/19/2006	12/19/2006	12/19/2006	12/19/2006	12/20/2006	12/19/2006

INORGANIC ANALYTES	METHOD	REPORTING LIMIT								
Beryllium	ICP	1.6	ND	1.3	ND	ND	ND	ND	0.84	ND
Cadmium	ICP	2.0	46	38	14	22	20	22	22	13
Copper	ICP	4.0	330	2600	140	270	150	680	680	200
Lead	ICP	4.0	240	330	27	31	150	290	290	40
Nickel	ICP	4.0	58	97	20	28	22	65	65	21
Vanadium	ICP	2.0	63	72	14	13	18	66	66	14
Zinc	ICP	4.0	260	170	78	74	61	240	240	49

NOTES:

- 1) METHOD = Inductively Coupled Plasma (ICP).
- 2) ND = Not Detected.

TABLE 6
METALS IN SOILS ANALYSES
mg/kg

SITE: WAMPUS MILFORD ASSOCIATES
CASE: 06120038 - 06120042
LABORATORY: OEME

NOT VALIDATED DATA

SAMPLE LOCATION:	SS-50	SS-51	SS-52	SS-53	SS-54	SS-55	SS-56
SAMPLE NUMBER:	D19115	D19116	D19117	D19118	D19120	D19121	D19122
LABORATORY NUMBER:	AA68416	AA68417	AA68418	AA68419	AA68434	AA68435	AA68436
DATE SAMPLED:	12/19/2006	12/19/2006	12/19/2006	12/19/2006	12/19/2006	12/19/2006	12/19/2006

INORGANIC ANALYTES METHOD		REPORTING LIMIT								
Beryllium	ICP	1.6	ND	ND	ND	ND	ND	ND	ND	ND
Cadmium	ICP	2.0	13	53	19	13	2.3	8.5	9.7	
Copper	ICP	4.0	140	290	260	270	81	130	210	
Lead	ICP	4.0	36	82	45	55	9.8	24	11	
Nickel	ICP	4.0	20	46	36	19	15	18	16	
Vanadium	ICP	2.0	13	53	11	13	17	16	13	
Zinc	ICP	4.0	44	250	60	70	33	52	39	

NOTES:

- 1) METHOD = Inductively Coupled Plasma (ICP).
- 2) ND = Not Detected.

TABLE 6
METALS IN SOILS ANALYSES
mg/kg

SITE: WAMPUS MILFORD ASSOCIATES
CASE: 06120038 - 06120042
LABORATORY: OEME

NOT VALIDATED DATA

SAMPLE LOCATION:	SS-57	SS-58	SS-59	SS-60	SS-61	SS-62	SS-00
SAMPLE NUMBER:	D19123	D19124	D19125	D19126	D19127	D19128	D19129
LABORATORY NUMBER:	AA68437	AA68438	AA68439	AA68440	AA68441	AA68442	AA68443
DATE SAMPLED:	12/19/2006	12/19/2006	12/19/2006	12/19/2006	12/19/2006	12/19/2006	12/19/2006

INORGANIC ANALYTES	METHOD	REPORTING LIMIT								
Beryllium	ICP	1.6	ND	ND	ND	ND	ND	ND	ND	ND
Cadmium	ICP	2.0	8.1	6.3	5.9	4.1	6	5.9	28	
Copper	ICP	4.0	130	110	110	43	440	110	610	
Lead	ICP	4.0	21	19	18	28	130	19	370	
Nickel	ICP	4.0	17	18	16	15	23	15	65	
Vanadium	ICP	2.0	14	17	15	19	39	15	88	
Zinc	ICP	4.0	37	40	36	46	130	34	440	

NOTES:

- 1) METHOD = Inductively Coupled Plasma (ICP).
- 2) ND = Not Detected.

TABLE 7

METALS IN SOILS ANALYSES
mg/kg

SITE: WAMPUS MILFORD ASSOCIATES
CASE: 06120041
LABORATORY: OEME

NOT VALIDATED DATA

SAMPLE LOCATION:	SD-01	SD-02	SD-03
SAMPLE NUMBER:	D19130	D19131	D19132
LABORATORY NUMBER:	AA68444	AA68445	AA68446
DATE SAMPLED:	12/20/2006	12/20/2006	12/20/2006

INORGANIC ANALYTES	METHOD	REPORTING LIMIT	SD-01	SD-02	SD-03
Beryllium	ICP	1.6	ND	ND	ND
Cadmium	ICP	2.0	ND	ND	ND
Copper	ICP	4.0	23	30	11
Lead	ICP	4.0	14	12	13
Nickel	ICP	4.0	23	19	23
Vanadium	ICP	2.0	51	50	72
Zinc	ICP	4.0	68	51	57

NOTES:

- 1) METHOD = Inductively Coupled Plasma (ICP).
- 2) ND = Not Detected.

TABLE 8

METALS IN SOILS ANALYSES
mg/kg

SITE: WAMPUS MILFORD ASSOCIATES
CASE: 06120041
LABORATORY: OEME

NOT VALIDATED DATA

SAMPLE LOCATION:	SB-01 (0-1)	SB-02 (0-1)	SB-03 (0-1)	SB-04 (0-1)	SB-05 (0-1)	SB-07 (0-1)	SB-08 (0-1)
SAMPLE NUMBER:	D19133	D19135	D19138	D19139	D19140	D19247	D19249
LABORATORY NUMBER:	AA68420	AA68421	AA68422	AA68423	AA68424	AA68425	AA68426
DATE SAMPLED:	12/20/2006	12/20/2006	12/20/2006	12/20/2006	12/20/2006	12/20/2006	12/20/2006

INORGANIC ANALYTES	METHOD	REPORTING LIMIT	SB-01 (0-1)	SB-02 (0-1)	SB-03 (0-1)	SB-04 (0-1)	SB-05 (0-1)	SB-07 (0-1)	SB-08 (0-1)
Aluminum	ICP		5300	5300	3800	7300	2900	3200	3200
Antimony	ICP		ND	ND	ND	ND	ND	ND	ND
Arsenic	ICP		2.1	3.1	ND	3.1	ND	ND	2
Barium	ICP		15	14	5.6	13	6.2	6.2	8
Beryllium	ICP	1.6	ND	ND	ND	ND	ND	ND	ND
Cadmium	ICP	2.0	10	6	3.6	ND	1.9	ND	6.4
Calcium	ICP		1300	580	730	1300	740	750	570
Chromium	ICP		13	9.6	8.1	13	4.7	4.7	11
Cobalt	ICP		4.6	3.9	2.9	5.5	ND	ND	ND
Copper	ICP	4.0	72	53	22	21	11	59	170
Iron	ICP		9200	9700	7200	14000	6200	6100	6700
Lead	ICP	4.0	12	19	3.7	7.9	3.2	2.9	37
Magnesium	ICP		2200	1900	1500	3300	1100	990	1100
Manganese	ICP		290	180	210	160	110	74	56
Nickel	ICP	4.0	16	12	22	19	8.8	7.3	16
Potassium	ICP		420	450	300	590	280	260	240
Selenium	ICP		ND	ND	ND	ND	ND	ND	ND
Silver	ICP		ND	ND	ND	ND	ND	ND	ND
Sodium	ICP		60	58	71	76	54	ND	ND
Thallium	ICP		ND	ND	ND	ND	ND	ND	ND
Vanadium	ICP	2.0	13	11	8.5	14	5.7	5.7	6.3
Zinc	ICP	4.0	36	21	24	25	15	15	25

NOTES:

- 1) METHOD = Inductively Coupled Plasma (ICP).
- 2) ND = Not Detected.

TABLE 8

METALS IN SOILS ANALYSES
mg/kg

SITE: WAMPUS MILFORD ASSOCIATES
CASE: 06120041
LABORATORY: OEME

NOT VALIDATED DATA

SAMPLE LOCATION:	SB-09 (0-1)	SB-10 (0-1)	SB-11 (0-1)	SB-01 (1-2)	SB-02 (1-2)	SB-03 (1-2)	SB-07 (1-2)
SAMPLE NUMBER:	D19250	D19252	D19254	D19134	D19136	D19137	D19247
LABORATORY NUMBER:	AA68427	AA68428	AA68429	AA68447	AA68448	AA68449	AA68451
DATE SAMPLED:	12/20/2006	12/20/2006	12/20/2006	12/20/2006	12/20/2006	12/20/2006	12/20/2006

INORGANIC ANALYTES	METHOD	REPORTING LIMIT	SB-09 (0-1)	SB-10 (0-1)	SB-11 (0-1)	SB-01 (1-2)	SB-02 (1-2)	SB-03 (1-2)	SB-07 (1-2)
Aluminum	ICP		3400	3900	5600	6400	5800	11000	5100
Antimony	ICP		ND	ND	ND	ND	ND	ND	ND
Arsenic	ICP		ND	ND	2.3	ND	ND	2.8	2.3
Barium	ICP		3.3	4	16	11	11	19	11
Beryllium	ICP	1.6	ND	ND	ND	ND	ND	ND	ND
Cadmium	ICP	2.0	1.4	1.1	7.5	2.9	3.1	ND	2.7
Calcium	ICP		540	670	1200	810	530	1300	830
Chromium	ICP		5.8	5.8	15	12	14	20	7.8
Cobalt	ICP		2.3	2.7	4.1	8.6	4.2	7.5	2.3
Copper	ICP	4.0	21	16	89	14	46	16	86
Iron	ICP		6700	6900	11000	13000	10000	18000	7900
Lead	ICP	4.0	6.2	4.1	13	5.6	14	6.1	3.7
Magnesium	ICP		1400	1400	2500	3500	2600	4900	1600
Manganese	ICP		69	150	330	360	230	280	100
Nickel	ICP	4.0	12	9.8	16	14	14	22	11
Potassium	ICP		230	260	420	710	400	640	290
Selenium	ICP		ND	ND	ND	ND	ND	ND	ND
Silver	ICP		ND	ND	1.2	ND	ND	ND	ND
Sodium	ICP		ND	ND	73	67	ND	74	ND
Thallium	ICP		ND	ND	ND	ND	ND	ND	ND
Vanadium	ICP	2.0	5.9	6.6	14	12	12	18	8.5
Zinc	ICP	4.0	12	20	33	36	29	32	27

NOTES:

- 1) METHOD = Inductively Coupled Plasma (ICP).
- 2) ND = Not Detected.

TABLE 8

METALS IN SOILS ANALYSES
mg/kg

SITE: WAMPUS MILFORD ASSOCIATES
CASE: 06120041
LABORATORY: OEME

NOT VALIDATED DATA

SAMPLE LOCATION:	SB-09 (1-2)	SB-10 (1-2)	SB-11 (1-2)
SAMPLE NUMBER:	D19251	D19253	D19255
LABORATORY NUMBER:	AA68452	AA68453	AA68454
DATE SAMPLED:	12/20/2006	12/20/2006	12/20/2006

INORGANIC ANALYTES	METHOD	REPORTING LIMIT	SB-09 (1-2)	SB-10 (1-2)	SB-11 (1-2)
Aluminum	ICP		4700	4200	5200
Antimony	ICP		ND	ND	ND
Arsenic	ICP		2.4	ND	ND
Barium	ICP		4.6	4	9.3
Beryllium	ICP	1.6	ND	ND	ND
Cadmium	ICP	2.0	1.8	1	2.6
Calcium	ICP		1000	780	740
Chromium	ICP		7.2	6.1	9.3
Cobalt	ICP		3.6	3.1	6.5
Copper	ICP	4.0	20	8.2	12
Iron	ICP		8000	6100	10000
Lead	ICP	4.0	8.3	3.5	5.2
Magnesium	ICP		1600	1400	2800
Manganese	ICP		91	85	270
Nickel	ICP	4.0	12	10	12
Potassium	ICP		320	260	640
Selenium	ICP		ND	ND	ND
Silver	ICP		ND	ND	ND
Sodium	ICP		ND	ND	58
Thallium	ICP		ND	ND	ND
Vanadium	ICP	2.0	8.2	6.6	9.1
Zinc	ICP	4.0	15	13	29

NOTES:

- 1) METHOD = Inductively Coupled Plasma (ICP).
- 2) ND = Not Detected.

TABLE 9

HEXAVALENT CHROMIUM IN SOILS ANALYSES
mg/kg

SITE: WAMPUS MILFORD ASSOCIATES
CASE: 06120038 - 06120042
LABORATORY: OEME

NOT VALIDATED DATA

SAMPLE LOCATION:	SS-01	SS-02	SS-03	SS-04	SS-05	SS-06	SS-07
SAMPLE NUMBER:	D15850	D15851	D15852	D18004	D18005	D18006	D18919
LABORATORY NUMBER:	AA68363	AA68364	AA68365	AA68366	AA68367	AA68368	AA68369
DATE SAMPLED:	12/19/2006	12/19/2006	12/19/2006	12/19/2006	12/19/2006	12/19/2006	12/19/2006

INORGANIC ANALYTES	METHOD	REPORTING LIMIT	SS-01	SS-02	SS-03	SS-04	SS-05	SS-06	SS-07
Hexavalent Chromium	7196A	0.8	ND	ND	ND	ND	ND	ND	ND

NOTES:

- 1) METHOD = EPA/SW-846 7196A.
- 2) ND = Not Detected.

TABLE 9

HEXAVALENT CHROMIUM IN SOILS ANALYSES
mg/kg

SITE: WAMPUS MILFORD ASSOCIATES
CASE: 06120038 - 06120042
LABORATORY: OEME

NOT VALIDATED DATA

SAMPLE LOCATION:	SS-08	SS-09	SS-10	SS-11	SS-12	SS-13	SS-14
SAMPLE NUMBER:	D18920	D18921	D18922	D18923	D18924	D18925	D18926
LABORATORY NUMBER:	AA68370	AA68371	AA68372	AA68373	AA68374	AA68375	AA68376
DATE SAMPLED:	12/19/2006	12/19/2006	12/19/2006	12/19/2006	12/19/2006	12/19/2006	12/19/2006

INORGANIC ANALYTES	METHOD	REPORTING LIMIT							
Hexavalent Chromium	7196A	0.8	ND	ND	ND	ND	ND	ND	ND

NOTES:

- 1) METHOD = EPA/SW-846 7196A.
- 2) ND = Not Detected.

TABLE 9

HEXAVALENT CHROMIUM IN SOILS ANALYSES
mg/kg

SITE: WAMPUS MILFORD ASSOCIATES
CASE: 06120038 - 06120042
LABORATORY: OEME

NOT VALIDATED DATA

SAMPLE LOCATION:	SS-15	SS-16	SS-17	SS-18	SS-19	SS-20	SS-21
SAMPLE NUMBER:	D18927	D18865	D18866	D18867	D18868	D18869	D18870
LABORATORY NUMBER:	AA68377	AA68378	AA68379	AA68380	AA68381	AA68382	AA68383
DATE SAMPLED:	12/19/2006	12/19/2006	12/19/2006	12/19/2006	12/19/2006	12/19/2006	12/19/2006

INORGANIC ANALYTES	METHOD	REPORTING LIMIT	SS-15	SS-16	SS-17	SS-18	SS-19	SS-20	SS-21
Hexavalent Chromium	7196A	0.8	ND	ND	ND	ND	ND	ND	ND

NOTES:

- 1) METHOD = EPA/SW-846 7196A.
- 2) ND = Not Detected.

TABLE 9

HEXAVALENT CHROMIUM IN SOILS ANALYSES
mg/kg

SITE: WAMPUS MILFORD ASSOCIATES
CASE: 06120038 - 06120042
LABORATORY: OEME

NOT VALIDATED DATA

SAMPLE LOCATION:	SS-22	SS-23	SS-24	SS-25	SS-26	SS-27	SS-28
SAMPLE NUMBER:	D18895	D18896	D18897	D18898	D18899	D18900	D18901
LABORATORY NUMBER:	AA68384	AA68385	AA68386	AA68387	AA68388	AA68389	AA68390
DATE SAMPLED:	12/19/2006	12/19/2006	12/19/2006	12/19/2006	12/19/2006	12/19/2006	12/19/2006

INORGANIC ANALYTES	METHOD	REPORTING LIMIT	SS-22	SS-23	SS-24	SS-25	SS-26	SS-27	SS-28
Hexavalent Chromium	7196A	0.8	ND	ND	ND	ND	ND	ND	ND

NOTES:

- 1) METHOD = EPA/SW-846 7196A.
- 2) ND = Not Detected.

TABLE 9

HEXAVALENT CHROMIUM IN SOILS ANALYSES
mg/kg

SITE: WAMPUS MILFORD ASSOCIATES
CASE: 06120038 - 06120042
LABORATORY: OEME

NOT VALIDATED DATA

SAMPLE LOCATION:	SS-29	SS-30	SS-31	SS-32	SS-33	SS-34	SS-35
SAMPLE NUMBER:	D18902	D18903	D18904	D18905	D18906	D18907	D18908
LABORATORY NUMBER:	AA68391	AA68392	AA68393	AA68394	AA68395	AA68396	AA68397
DATE SAMPLED:	12/19/2006	12/19/2006	12/19/2006	12/19/2006	12/19/2006	12/19/2006	12/19/2006

INORGANIC ANALYTES	METHOD	REPORTING LIMIT	SS-29	SS-30	SS-31	SS-32	SS-33	SS-34	SS-35
Hexavalent Chromium	7196A	0.8	ND	ND	ND	ND	ND	ND	ND

NOTES:

- 1) METHOD = EPA/SW-846 7196A.
- 2) ND = Not Detected.

TABLE 9

HEXAVALENT CHROMIUM IN SOILS ANALYSES
mg/kg

SITE: WAMPUS MILFORD ASSOCIATES
CASE: 06120038 - 06120042
LABORATORY: OEME

NOT VALIDATED DATA

SAMPLE LOCATION:	SS-36	SS-37	SS-38	SS-39	SS-40	SS-41	SS-42
SAMPLE NUMBER:	D18909	D18910	D18911	D18912	D18913	D18914	D18915
LABORATORY NUMBER:	AA68398	AA68399	AA68400	AA68401	AA68402	AA68407	AA68408
DATE SAMPLED:	12/19/2006	12/19/2006	12/19/2006	12/19/2006	12/19/2006	12/19/2006	12/19/2006

INORGANIC ANALYTES	METHOD	REPORTING LIMIT	SS-36	SS-37	SS-38	SS-39	SS-40	SS-41	SS-42
Hexavalent Chromium	7196A	0.8	ND	ND	ND	ND	ND	ND	ND

NOTES:

- 1) METHOD = EPA/SW-846 7196A.
- 2) ND = Not Detected.

TABLE 9

HEXAVALENT CHROMIUM IN SOILS ANALYSES
mg/kg

SITE: WAMPUS MILFORD ASSOCIATES
CASE: 06120038 - 06120042
LABORATORY: OEME

NOT VALIDATED DATA

SAMPLE LOCATION:	SS-43	SS-44	SS-45	SS-46	SS-47	SS-48	SS-49
SAMPLE NUMBER:	D18916	D18917	D18918	D19111	D19112	D19113	D19114
LABORATORY NUMBER:	AA68409	AA68410	AA68411	AA68412	AA68413	AA68414	AA68415
DATE SAMPLED:	12/19/2006	12/19/2006	12/19/2006	12/19/2006	12/19/2006	12/20/2006	12/19/2006

INORGANIC ANALYTES	METHOD	REPORTING LIMIT	SS-43	SS-44	SS-45	SS-46	SS-47	SS-48	SS-49
Hexavalent Chromium	7196A	0.8	ND	ND	ND	ND	ND	ND	ND

NOTES:

- 1) METHOD = EPA/SW-846 7196A.
- 2) ND = Not Detected.

TABLE 9

HEXAVALENT CHROMIUM IN SOILS ANALYSES
mg/kg

SITE: WAMPUS MILFORD ASSOCIATES
CASE: 06120038 - 06120042
LABORATORY: OEME

NOT VALIDATED DATA

SAMPLE LOCATION:	SS-50	SS-51	SS-52	SS-53	SS-54	SS-55	SS-56
SAMPLE NUMBER:	D19115	D19116	D19117	D19118	D19120	D19121	D19122
LABORATORY NUMBER:	AA68416	AA68417	AA68418	AA68419	AA68434	AA68435	AA68436
DATE SAMPLED:	12/19/2006	12/19/2006	12/19/2006	12/19/2006	12/19/2006	12/19/2006	12/19/2006

INORGANIC ANALYTES	METHOD	REPORTING LIMIT	SS-50	SS-51	SS-52	SS-53	SS-54	SS-55	SS-56
Hexavalent Chromium	7196A	0.8	ND	ND	ND	ND	ND	ND	ND

NOTES:

- 1) METHOD = EPA/SW-846 7196A.
- 2) ND = Not Detected.

TABLE 9

HEXAVALENT CHROMIUM IN SOILS ANALYSES
mg/kg

SITE: WAMPUS MILFORD ASSOCIATES
CASE: 06120038 - 06120042
LABORATORY: OEME

NOT VALIDATED DATA

SAMPLE LOCATION:	SS-57	SS-58	SS-59	SS-60	SS-61	SS-62	SS-00
SAMPLE NUMBER:	D19123	D19124	D19125	D19126	D19127	D19128	D19129
LABORATORY NUMBER:	AA68437	AA68438	AA68439	AA68440	AA68441	AA68442	AA68443
DATE SAMPLED:	12/19/2006	12/19/2006	12/19/2006	12/19/2006	12/19/2006	12/19/2006	12/19/2006

INORGANIC ANALYTES	METHOD	REPORTING LIMIT	SS-57	SS-58	SS-59	SS-60	SS-61	SS-62	SS-00
Hexavalent Chromium	7196A	0.8	ND	ND	ND	ND	ND	ND	ND

NOTES:

- 1) METHOD = EPA/SW-846 7196A.
- 2) ND = Not Detected.

TABLE 10

SITE: WAMPUS MILFORD ASSOCIATES
CASE: 06120041
LABORATORY: OEME

HEXAVALENT CHROMIUM IN SOILS ANALYSES
mg/kg

NOT VALIDATED DATA

SAMPLE LOCATION:	SB-01 (0-1)	SB-02 (0-1)	SB-03 (0-1)	SB-04 (0-1)	SB-05 (0-1)	SB-07 (0-1)	SB-08 (0-1)
SAMPLE NUMBER:	D19133	D19135	D19138	D19139	D19140	D19247	D19249
LABORATORY NUMBER:	AA68420	AA68421	AA68422	AA68423	AA68424	AA68425	AA68426
DATE SAMPLED:	12/20/2006	12/20/2006	12/20/2006	12/20/2006	12/20/2006	12/20/2006	12/20/2006

INORGANIC ANALYTES METHOD	REPORTING LIMIT	SB-01 (0-1)	SB-02 (0-1)	SB-03 (0-1)	SB-04 (0-1)	SB-05 (0-1)	SB-07 (0-1)	SB-08 (0-1)
Hexavalent Chromium 7196A	0.8	ND	ND	ND	ND	ND	ND	ND

NOTES:

- 1) METHOD = EPA/SW-846 7196A.
- 2) ND = Not Detected.

TABLE 10

SITE: WAMPUS MILFORD ASSOCIATES
CASE: 06120041
LABORATORY: OEME

HEXAVALENT CHROMIUM IN SOILS ANALYSES
mg/kg

NOT VALIDATED DATA

SAMPLE LOCATION:	SB-09 (0-1)	SB-10 (0-1)	SB-11 (0-1)	SB-01 (1-2)	SB-02 (1-2)	SB-03 (1-2)	SB-07 (1-2)
SAMPLE NUMBER:	D19250	D19252	D19254	D19134	D19136	D19137	D19247
LABORATORY NUMBER:	AA68427	AA68428	AA68429	AA68447	AA68448	AA68449	AA68451
DATE SAMPLED:	12/20/2006	12/20/2006	12/20/2006	12/20/2006	12/20/2006	12/20/2006	12/20/2006

INORGANIC ANALYTES METHOD	REPORTING LIMIT								
Hexavalent Chromium 7196A	0.8	ND	ND	ND	ND	ND	ND	ND	ND

NOTES:

- 1) METHOD = EPA/SW-846 7196A.
- 2) ND = Not Detected.

TABLE 10

SITE: WAMPUS MILFORD ASSOCIATES
CASE: 06120041
LABORATORY: OEME

HEXAVALENT CHROMIUM IN SOILS ANALYSES
mg/kg

NOT VALIDATED DATA

SAMPLE LOCATION:	SB-09 (1-2)	SB-10 (1-2)	SB-11 (1-2)
SAMPLE NUMBER:	D19251	D19253	D19255
LABORATORY NUMBER:	AA68452	AA68453	AA68454
DATE SAMPLED:	12/20/2006	12/20/2006	12/20/2006

INORGANIC ANALYTES	METHOD	REPORTING LIMIT			
Hexavalent Chromium	7196A	0.8	ND	ND	ND

NOTES:

- 1) METHOD = EPA/SW-846 7196A.
- 2) ND = Not Detected.

TABLE 11

HEXAVALENT CHROMIUM IN SEDIMENT ANALYSES
mg/kg

SITE: WAMPUS MILFORD ASSOCIATES
CASE: 06120041
LABORATORY: OEME

NOT VALIDATED DATA

SAMPLE LOCATION:	SD-01	SD-02	SD-03
SAMPLE NUMBER:	D19130	D19131	D19132
LABORATORY NUMBER:	AA68444	AA68445	AA68446
DATE SAMPLED:	12/20/2006	12/20/2006	12/20/2006

INORGANIC ANALYTES	METHOD	REPORTING LIMIT	SD-01	SD-02	SD-03
Hexavalent Chromium	7196A	0.8	ND	ND	ND

NOTES:

- 1) METHOD = EPA/SW-846 7196A.
- 2) ND = Not Detected.