



Benton Creosote

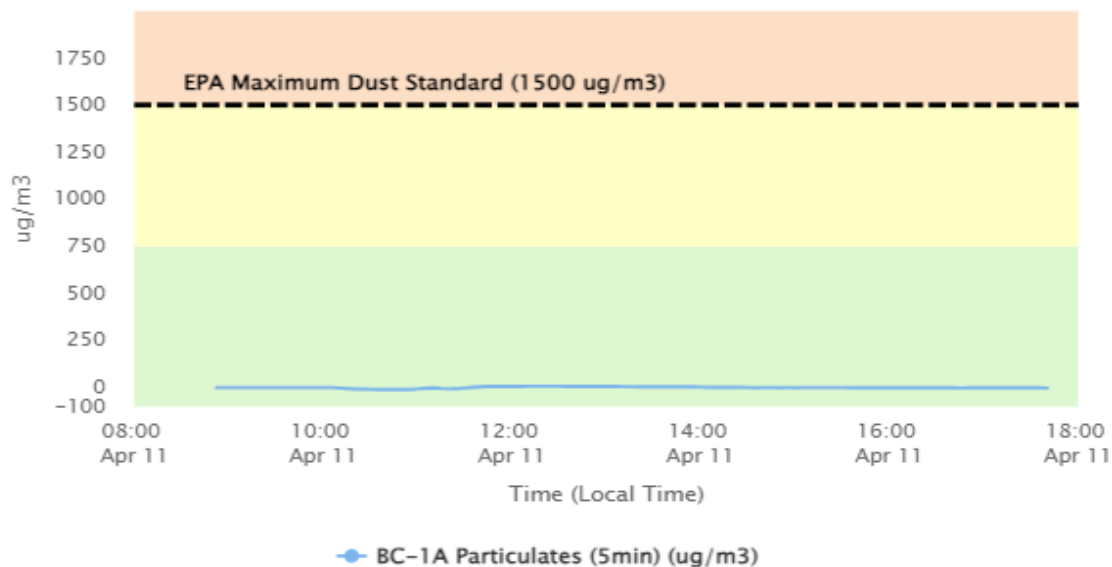
Perimeter Air Monitoring Daily Report (4/11/2024)

For Location BC-1



To better understand in what direction and how strong the wind is blowing at the Benton Creosote Site, please see the Wind Rose (shown in the top righthand corner of the map). A Wind Rose is a vivid chart showing the wind's direction, its frequency, and its speed at a specific location. A Wind Rose shows the direction of the wind by the length of the "bars" or "petals." A day with consistent wind directions will have one or two long petals. A day with different wind directions will have many shorter similar-length petals. For instance, a day with one long petal pointing north (N) means that winds mainly blew from the north in a southerly direction. The Wind Rose also shows a percentage (%) of time during which the wind blew in one direction or another.

Dust Monitoring



Stat	Reading (ug/m3)	Time Occurred
Min	0	10:45:20 AM
Max	4.573	12:20:20 PM
Avg	-2.30	4/11/2024
Comments	Particulate monitors may produce negative results after the data has been transmitted to a host platform display or if the instrument experiences zero drift. Both occur when the particulate load and humidity in the atmosphere is low. Voltage readings at low levels may fluctuate at the analog output due to the instrument's resolution capability resulting in a negative reading.	



Benton Creosote

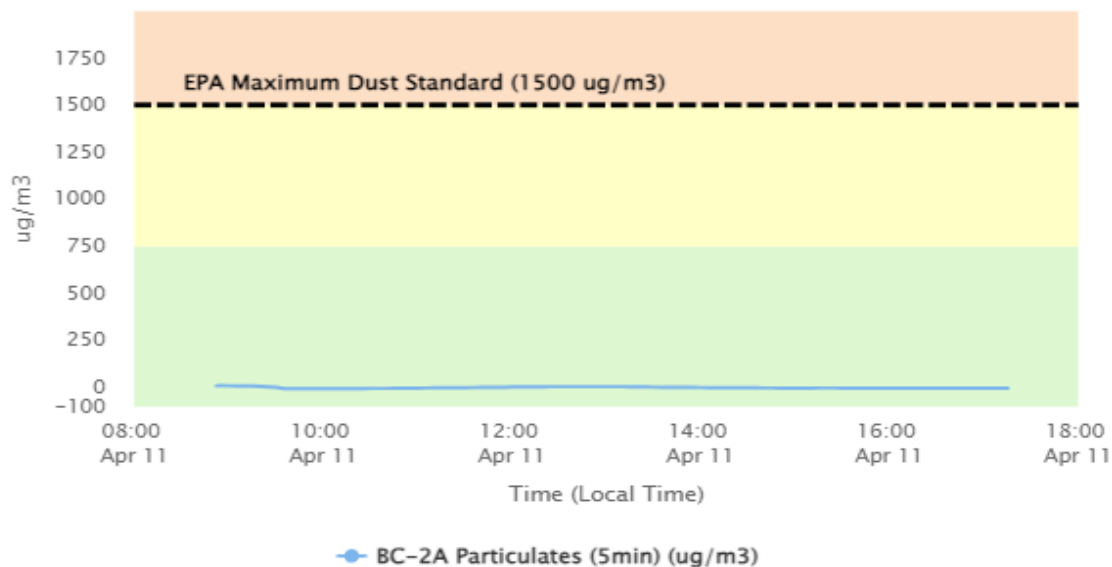
Perimeter Air Monitoring Daily Report (4/11/2024)

For Location BC-2



To better understand in what direction and how strong the wind is blowing at the Benton Creosote Site, please see the Wind Rose (shown in the top righthand corner of the map). A Wind Rose is a vivid chart showing the wind's direction, its frequency, and its speed at a specific location. A Wind Rose shows the direction of the wind by the length of the "bars" or "petals." A day with consistent wind directions will have one or two long petals. A day with different wind directions will have many shorter similar-length petals. For instance, a day with one long petal pointing north (N) means that winds mainly blew from the north in a southerly direction. The Wind Rose also shows a percentage (%) of time during which the wind blew in one direction or another.

Dust Monitoring



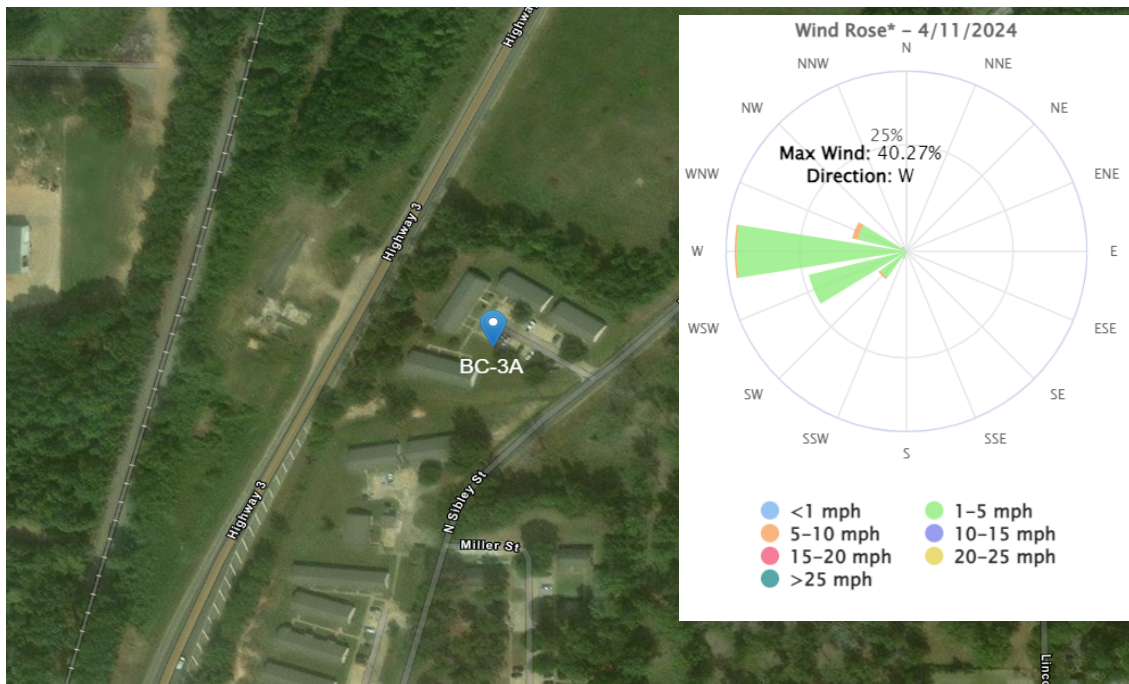
Stat	Reading (ug/m3)	Time Occurred
Min	0	9:35:20 AM
Max	7.262	8:55:20 AM
Avg	-3.02	4/11/2024
Comments	Particulate monitors may produce negative results after the data has been transmitted to a host platform display or if the instrument experiences zero drift. Both occur when the particulate load and humidity in the atmosphere is low. Voltage readings at low levels may fluctuate at the analog output due to the instrument's resolution capability resulting in a negative reading.	



Benton Creosote

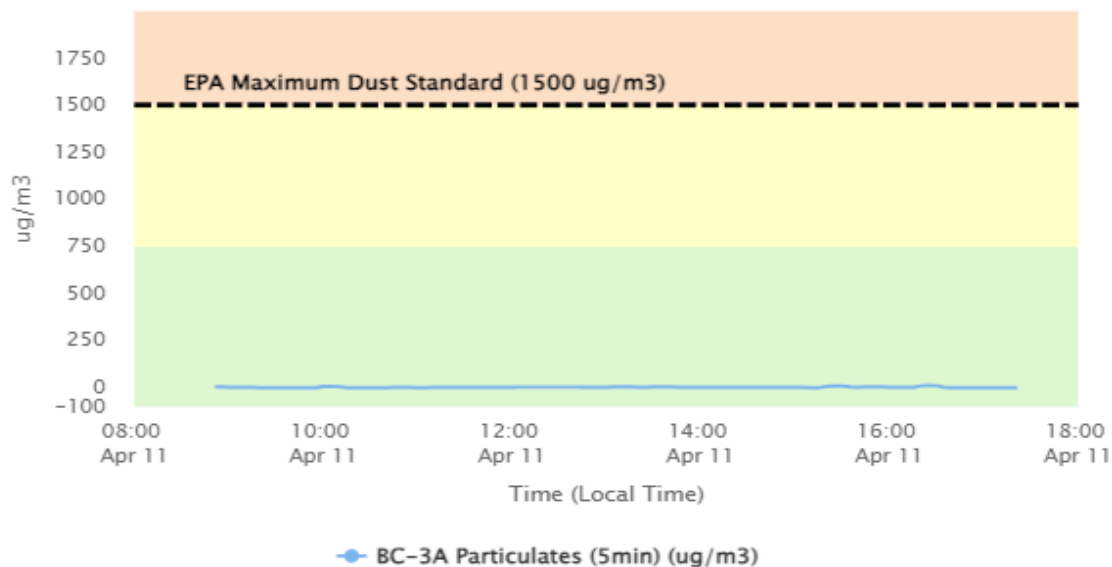
Perimeter Air Monitoring Daily Report (4/11/2024)

For Location BC-3



To better understand in what direction and how strong the wind is blowing at the Benton Creosote Site, please see the Wind Rose (shown in the top righthand corner of the map). A Wind Rose is a vivid chart showing the wind's direction, its frequency, and its speed at a specific location. A Wind Rose shows the direction of the wind by the length of the "bars" or "petals." A day with consistent wind directions will have one or two long petals. A day with different wind directions will have many shorter similar-length petals. For instance, a day with one long petal pointing north (N) means that winds mainly blew from the north in a southerly direction. The Wind Rose also shows a percentage (%) of time during which the wind blew in one direction or another.

Dust Monitoring



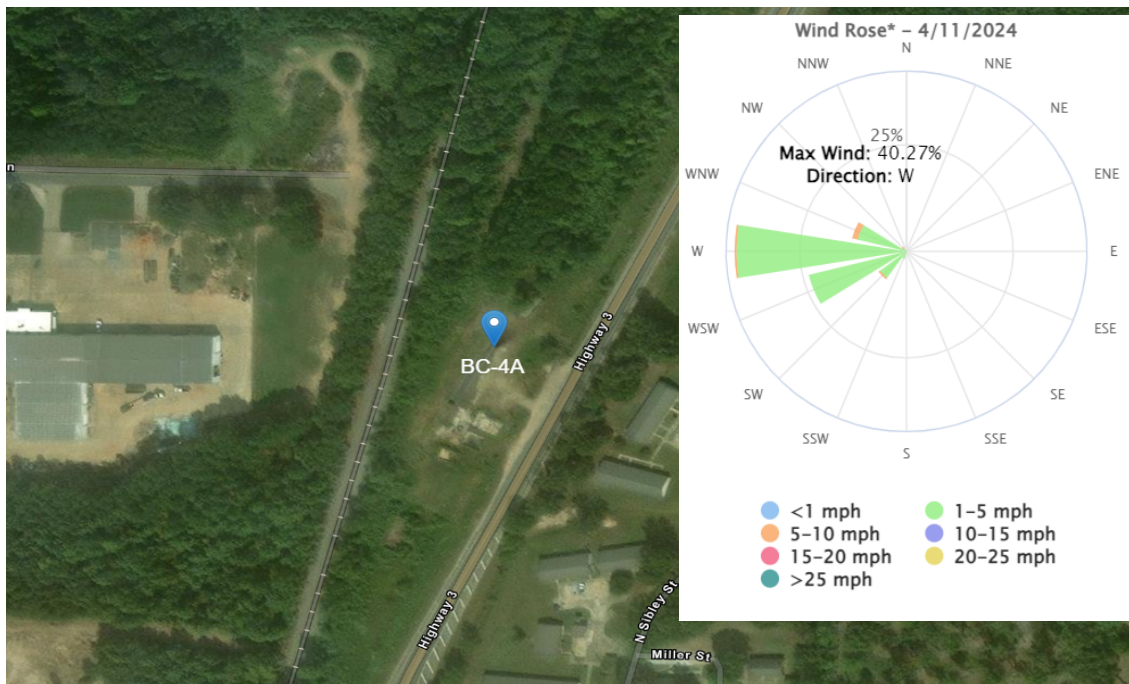
Stat	Reading (ug/m3)	Time Occurred
Min	0	9:35:20 AM
Max	7.301	4:25:20 PM
Avg	-1.06	4/11/2024
Comments	Particulate monitors may produce negative results after the data has been transmitted to a host platform display or if the instrument experiences zero drift. Both occur when the particulate load and humidity in the atmosphere is low. Voltage readings at low levels may fluctuate at the analog output due to the instrument's resolution capability resulting in a negative reading.	



Benton Creosote

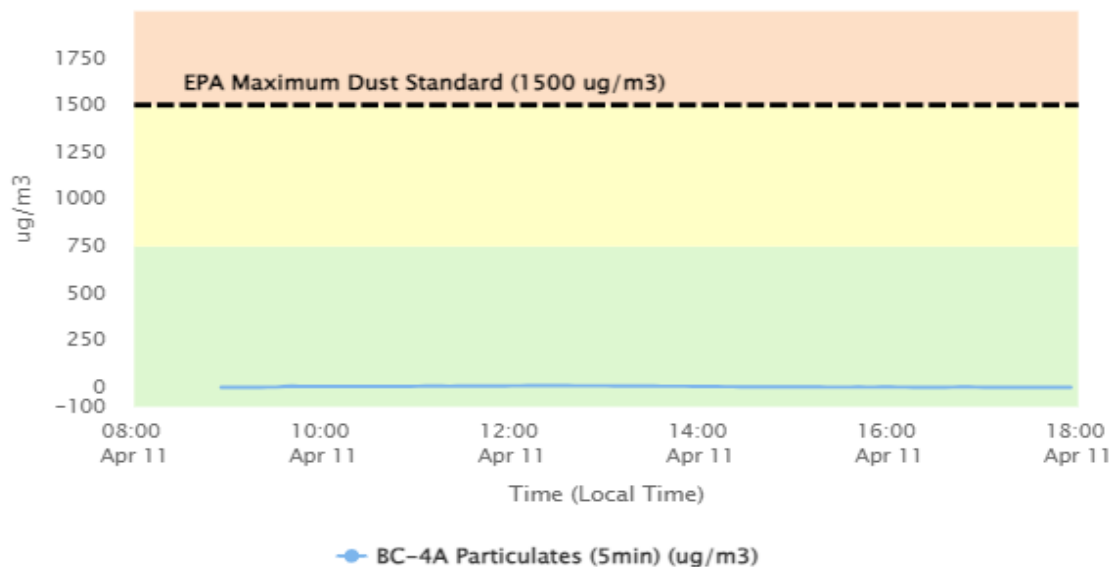
Perimeter Air Monitoring Daily Report (4/11/2024)

For Location BC-4



To better understand in what direction and how strong the wind is blowing at the Benton Creosote Site, please see the Wind Rose (shown in the top righthand corner of the map). A Wind Rose is a vivid chart showing the wind's direction, its frequency, and its speed at a specific location. A Wind Rose shows the direction of the wind by the length of the "bars" or "petals." A day with consistent wind directions will have one or two long petals. A day with different wind directions will have many shorter similar-length petals. For instance, a day with one long petal pointing north (N) means that winds mainly blew from the north in a southerly direction. The Wind Rose also shows a percentage (%) of time during which the wind blew in one direction or another.

Dust Monitoring



Stat	Reading (ug/m3)	Time Occurred
Min	0	5:45:20 PM
Max	7.547	12:20:20 PM
Avg	2.63	4/11/2024
Comments		