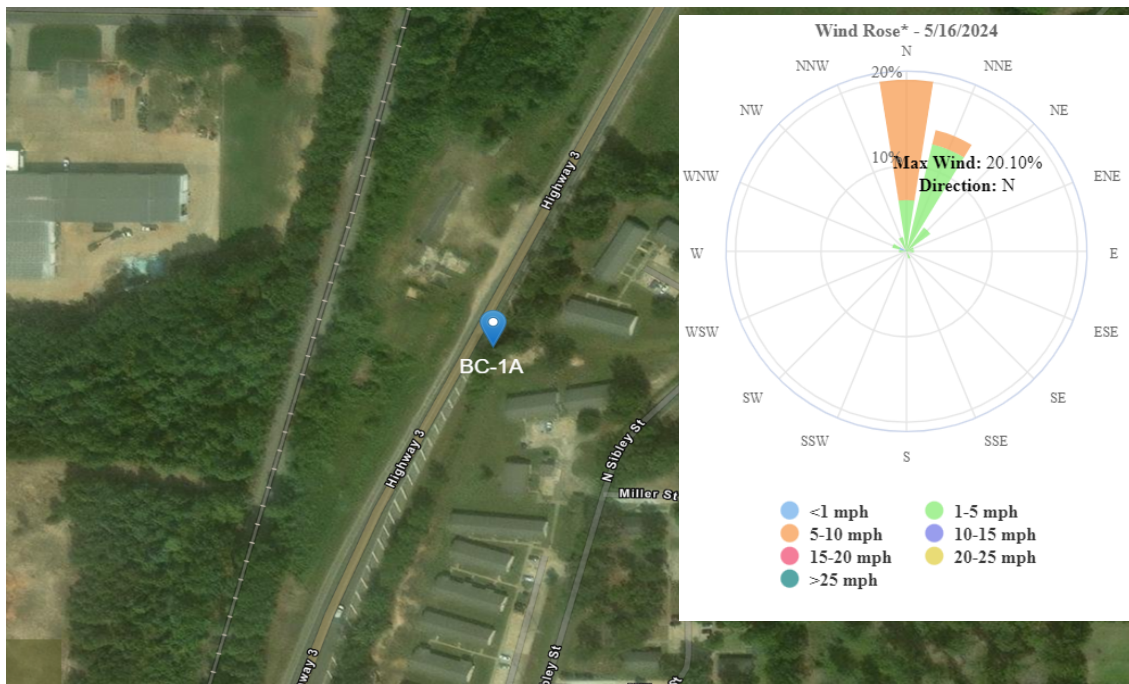




Benton Creosote

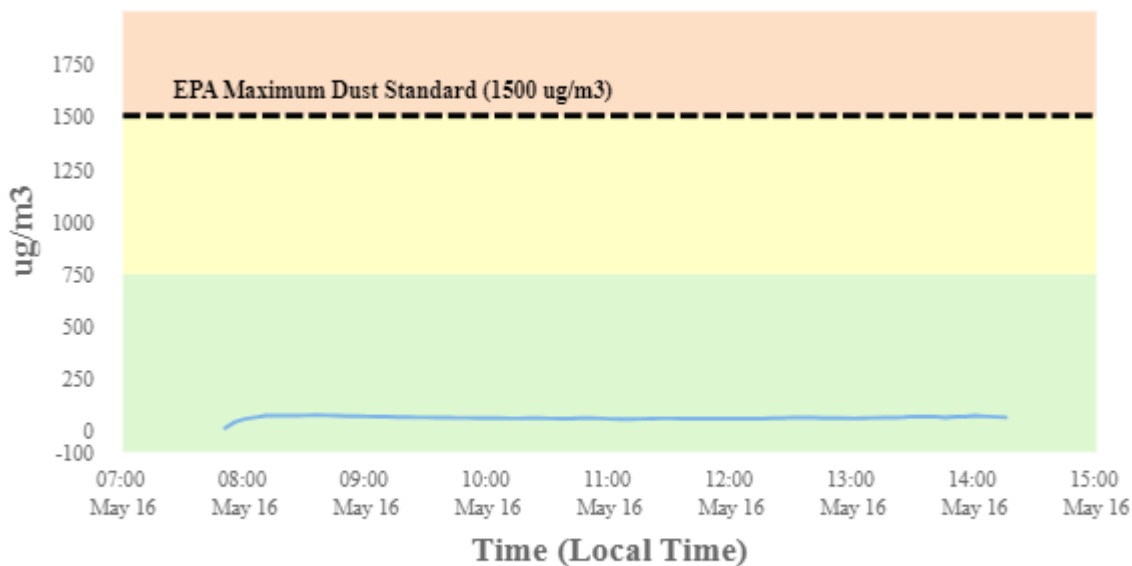
Perimeter Air Monitoring Daily Report (5/16/2024)

For Location BC-1A



To better understand in what direction and how strong the wind is blowing at the Benton Creosote Site, please see the Wind Rose (shown in the top righthand corner of the map). A Wind Rose is a vivid chart showing the wind's direction, its frequency, and its speed at a specific location. A Wind Rose shows the direction of the wind by the length of the "bars" or "petals." A day with consistent wind directions will have one or two long petals. A day with different wind directions will have many shorter similar-length petals. For instance, a day with one long petal pointing north (N) means that winds mainly blew from the north in a southerly direction. The Wind Rose also shows a percentage (%) of time during which the wind blew in one direction or another.

Dust Monitoring



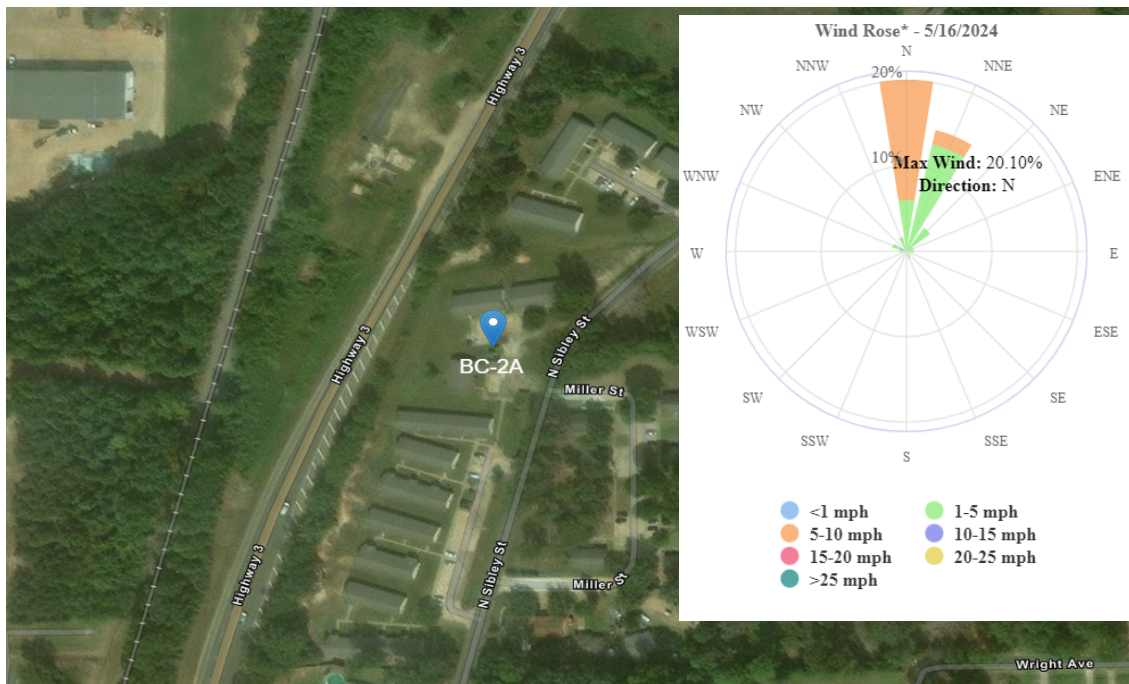
Stat	Reading (ug/m3)	Time Occurred
Min	8.05	7:50:20 AM
Max	69.83	8:35:20 AM
Avg	58.05	5/16/2024
Comments	Perimeter air monitoring conducted by START was done as a precautionary measure due to having open grids on the site. No contaminated soil was excavated or transported on this day. Due to rain on the site the DustTrak units were turned off at 1410 hrs.	



Benton Creosote

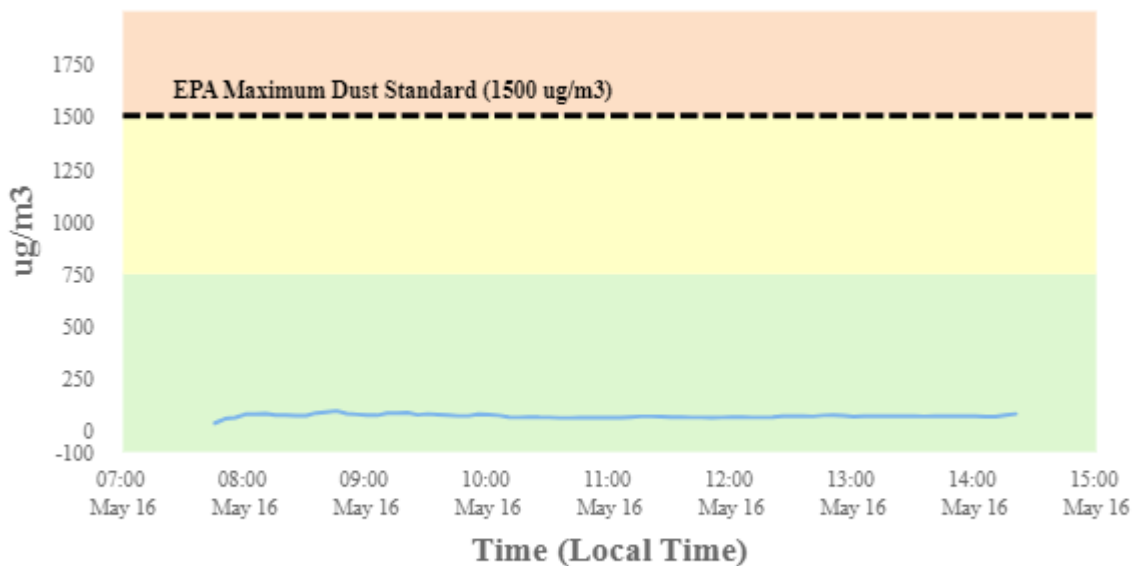
Perimeter Air Monitoring Daily Report (5/16/2024)

For Location BC-2A



To better understand in what direction and how strong the wind is blowing at the Benton Creosote Site, please see the Wind Rose (shown in the top righthand corner of the map). A Wind Rose is a vivid chart showing the wind's direction, its frequency, and its speed at a specific location. A Wind Rose shows the direction of the wind by the length of the "bars" or "petals." A day with consistent wind directions will have one or two long petals. A day with different wind directions will have many shorter similar-length petals. For instance, a day with one long petal pointing north (N) means that winds mainly blew from the north in a southerly direction. The Wind Rose also shows a percentage (%) of time during which the wind blew in one direction or another.

Dust Monitoring



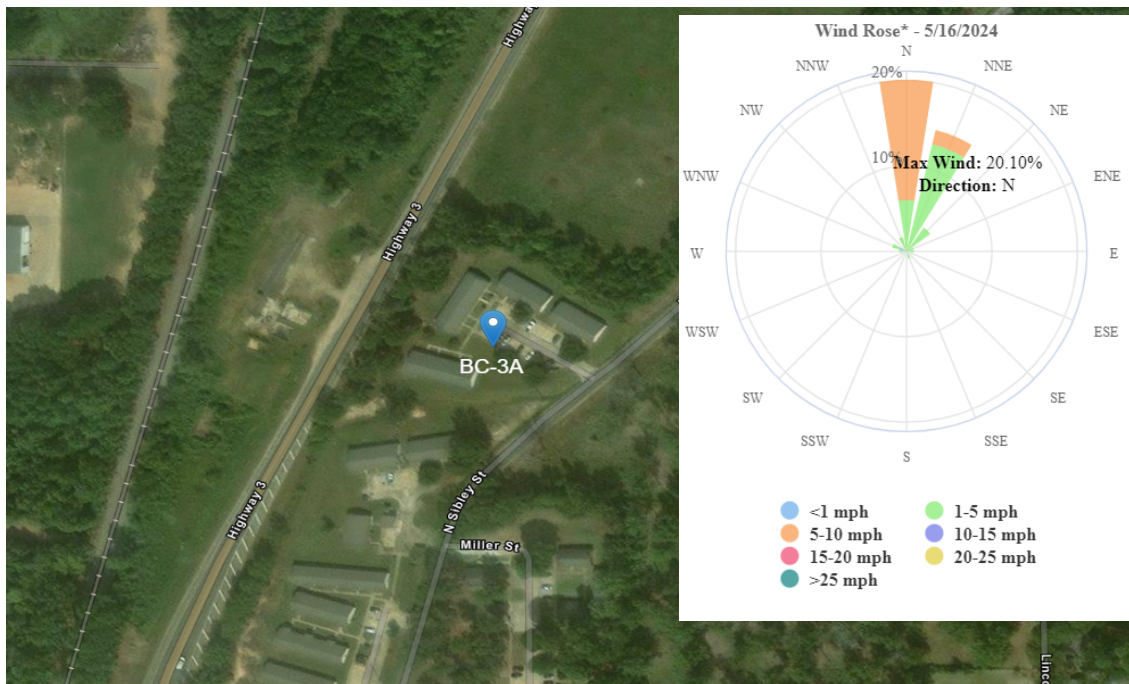
Stat	Reading (ug/m3)	Time Occurred
Min	32.48	7:45:20 AM
Max	90.6	8:45:20 AM
Avg	66.37	5/16/2024
Comments	Perimeter air monitoring conducted by START was done as a precautionary measure due to having open grids on the site. No contaminated soil was excavated or transported on this day. Due to rain on the site the DustTrak units were turned off at 1410 hrs.	



Benton Creosote

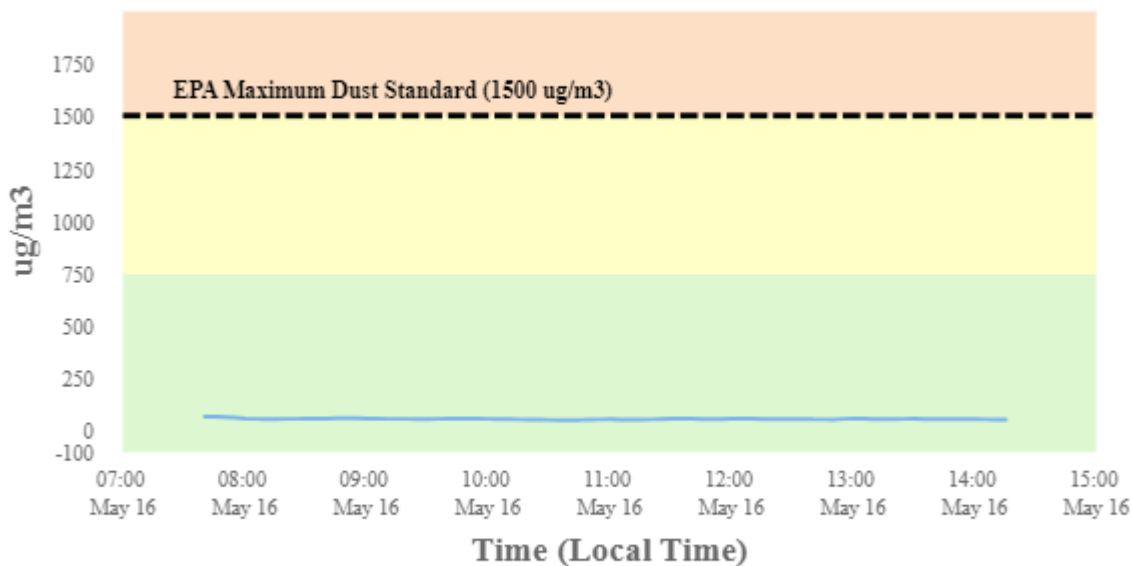
Perimeter Air Monitoring Daily Report (5/16/2024)

For Location BC-3A



To better understand in what direction and how strong the wind is blowing at the Benton Creosote Site, please see the Wind Rose (shown in the top righthand corner of the map). A Wind Rose is a vivid chart showing the wind's direction, its frequency, and its speed at a specific location. A Wind Rose shows the direction of the wind by the length of the "bars" or "petals." A day with consistent wind directions will have one or two long petals. A day with different wind directions will have many shorter similar-length petals. For instance, a day with one long petal pointing north (N) means that winds mainly blew from the north in a southerly direction. The Wind Rose also shows a percentage (%) of time during which the wind blew in one direction or another.

Dust Monitoring



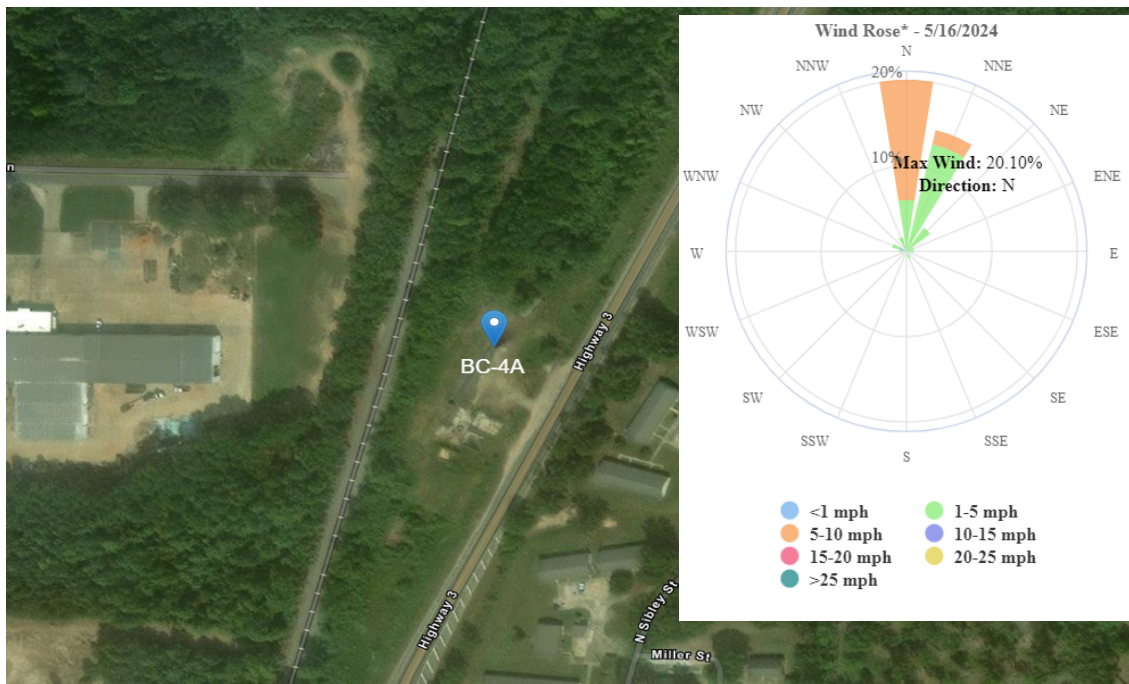
Stat	Reading (ug/m3)	Time Occurred
Min	47.52	10:35:20 AM
Max	63.94	7:40:20 AM
Avg	52.47	5/16/2024
Comments	Perimeter air monitoring conducted by START was done as a precautionary measure due to having open grids on the site. No contaminated soil was excavated or transported on this day. Due to rain on the site the DustTrak units were turned off at 1410 hrs.	



Benton Creosote

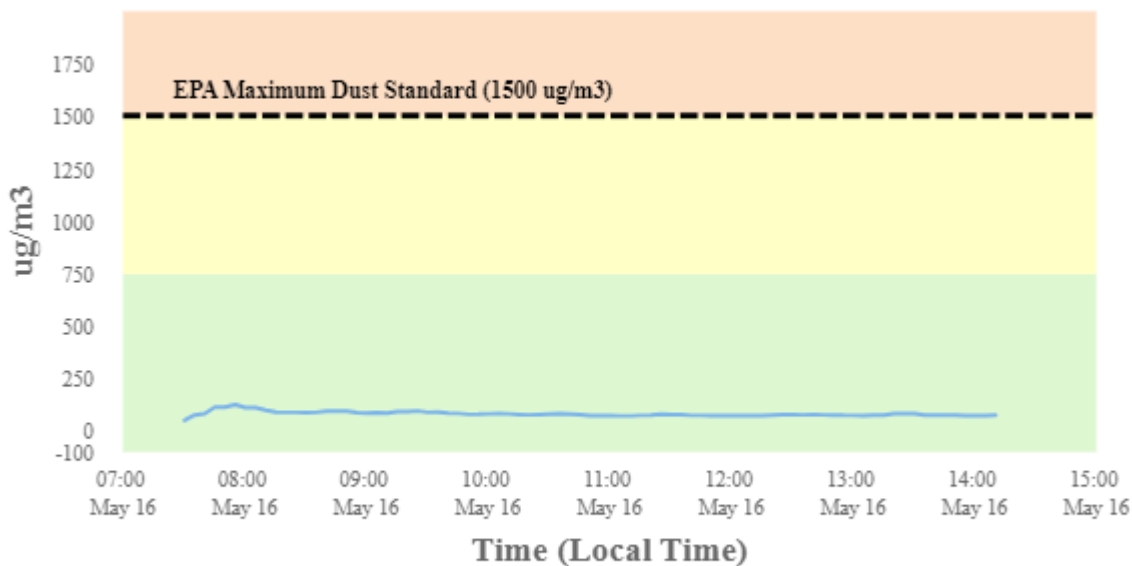
Perimeter Air Monitoring Daily Report (5/16/2024)

For Location BC-4A



To better understand in what direction and how strong the wind is blowing at the Benton Creosote Site, please see the Wind Rose (shown in the top righthand corner of the map). A Wind Rose is a vivid chart showing the wind's direction, its frequency, and its speed at a specific location. A Wind Rose shows the direction of the wind by the length of the "bars" or "petals." A day with consistent wind directions will have one or two long petals. A day with different wind directions will have many shorter similar-length petals. For instance, a day with one long petal pointing north (N) means that winds mainly blew from the north in a southerly direction. The Wind Rose also shows a percentage (%) of time during which the wind blew in one direction or another.

Dust Monitoring



Stat	Reading (ug/m3)	Time Occurred
Min	45.49	7:30:20 AM
Max	120.9	7:55:20 AM
Avg	77.22	5/16/2024
Comments	Perimeter air monitoring conducted by START was done as a precautionary measure due to having open grids on the site. No contaminated soil was excavated or transported on this day. Due to rain on the site the DustTrak units were turned off at 1410 hrs.	