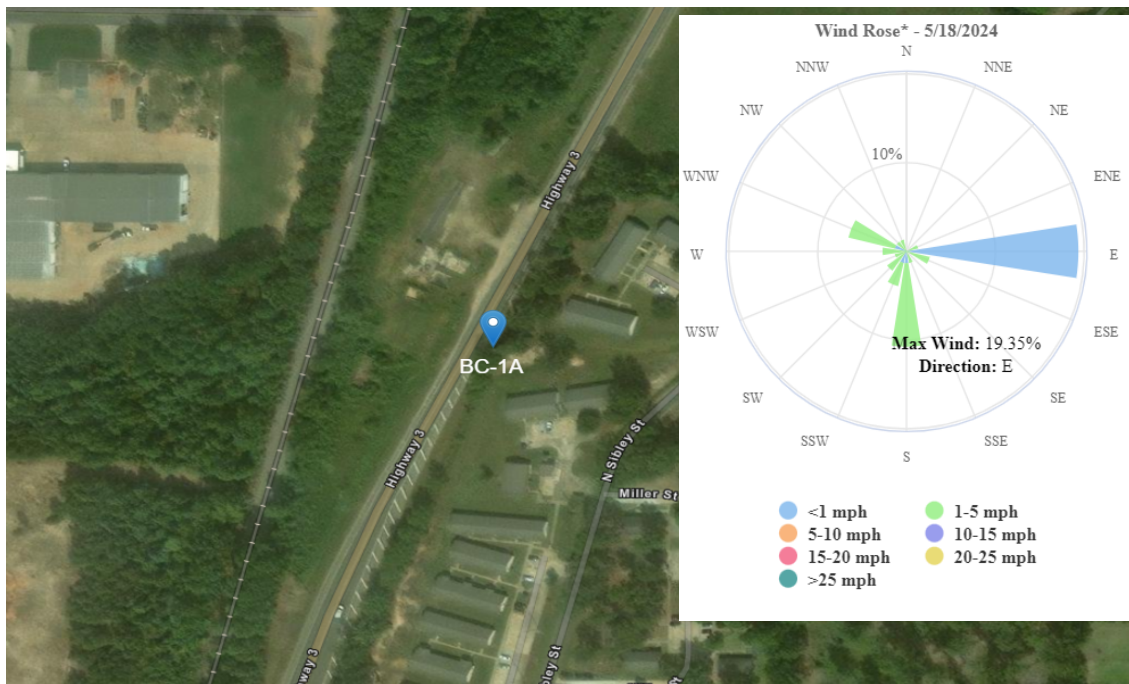




# Benton Creosote

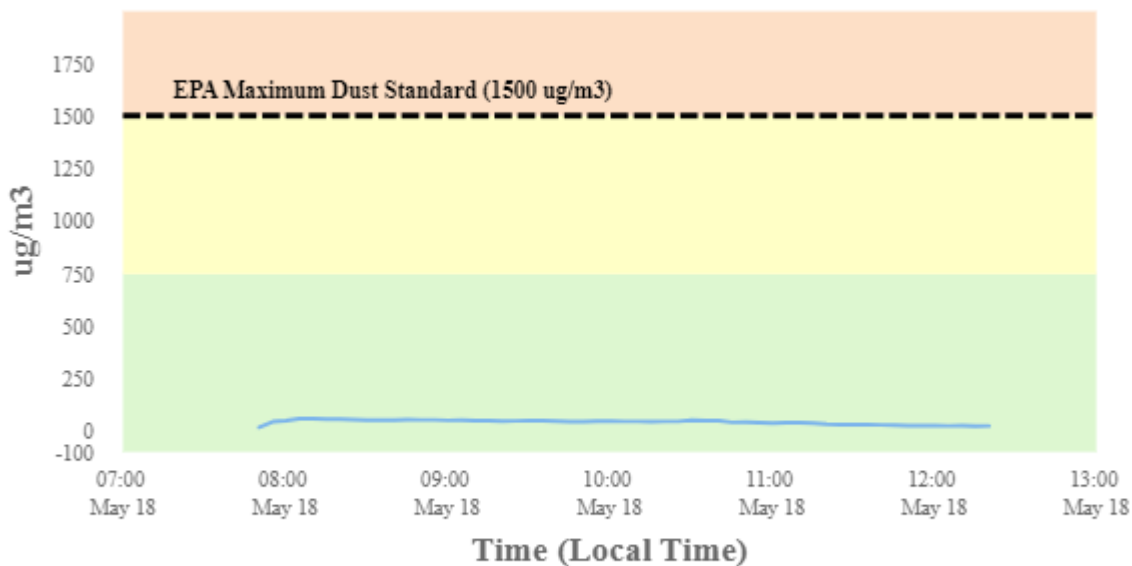
## Perimeter Air Monitoring Daily Report (5/18/2024)

### For Location BC-1A



To better understand in what direction and how strong the wind is blowing at the Benton Creosote Site, please see the Wind Rose (shown in the top righthand corner of the map). A Wind Rose is a vivid chart showing the wind's direction, its frequency, and its speed at a specific location. A Wind Rose shows the direction of the wind by the length of the "bars" or "petals." A day with consistent wind directions will have one or two long petals. A day with different wind directions will have many shorter similar-length petals. For instance, a day with one long petal pointing north (N) means that winds mainly blew from the north in a southerly direction. The Wind Rose also shows a percentage (%) of time during which the wind blew in one direction or another.

## Dust Monitoring



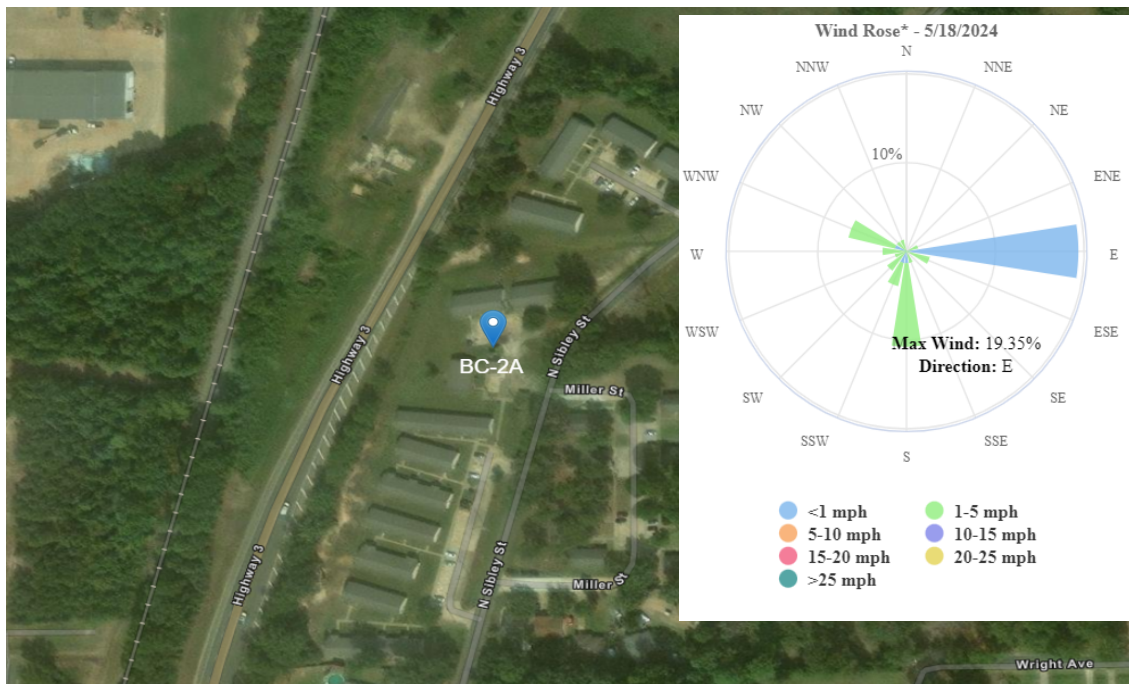
Stat	Reading (ug/m3)	Time Occurred
Min	12.46	7:50:20 AM
Max	53.65	8:05:20 AM
Avg	38.06	5/18/2024
Comments	Perimeter air monitoring conducted by START was done as a precautionary measure due to having open grids on the site. No contaminated soil was excavated or transported on this day. START shutdown the Dust Trak units at 1210 hrs with permission from the OSC and demobilized from the site at 1300 hrs.	



# Benton Creosote

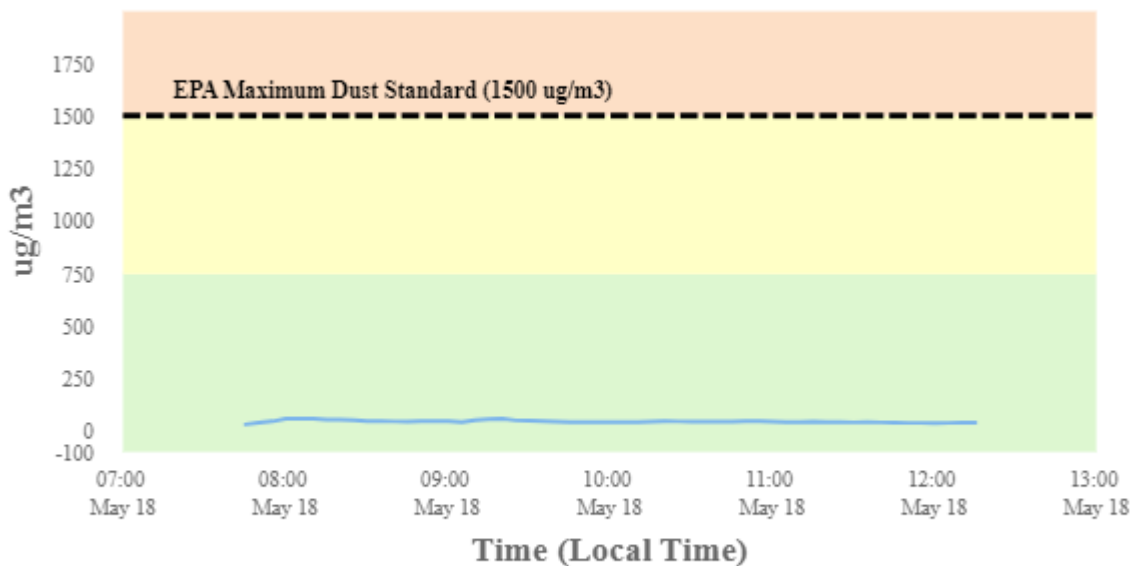
## Perimeter Air Monitoring Daily Report (5/18/2024)

### For Location BC-2A



To better understand in what direction and how strong the wind is blowing at the Benton Creosote Site, please see the Wind Rose (shown in the top righthand corner of the map). A Wind Rose is a vivid chart showing the wind's direction, its frequency, and its speed at a specific location. A Wind Rose shows the direction of the wind by the length of the "bars" or "petals." A day with consistent wind directions will have one or two long petals. A day with different wind directions will have many shorter similar-length petals. For instance, a day with one long petal pointing north (N) means that winds mainly blew from the north in a southerly direction. The Wind Rose also shows a percentage (%) of time during which the wind blew in one direction or another.

## Dust Monitoring



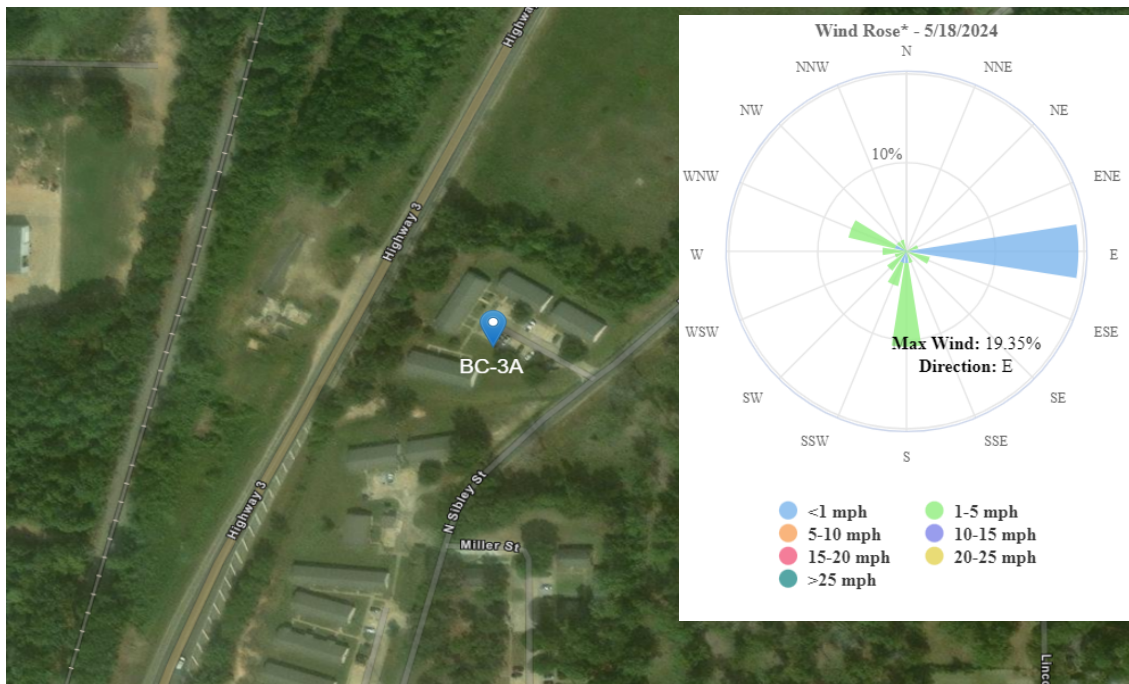
Stat	Reading (ug/m3)	Time Occurred
Min	26.43	7:45:20 AM
Max	54.08	8:00:20 AM
Avg	40.58	5/18/2024
Comments	Perimeter air monitoring conducted by START was done as a precautionary measure due to having open grids on the site. No contaminated soil was excavated or transported on this day. START shutdown the Dust Trak units at 1210 hrs with permission from the OSC and demobilized from the site at 1300 hrs.	



# Benton Creosote

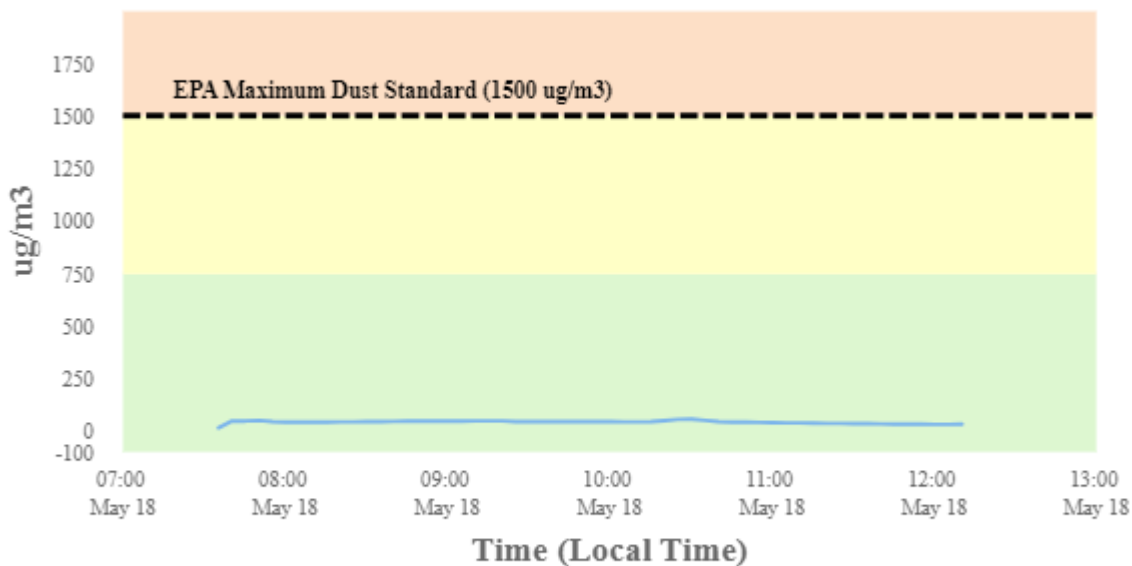
## Perimeter Air Monitoring Daily Report (5/18/2024)

### For Location BC-3A



To better understand in what direction and how strong the wind is blowing at the Benton Creosote Site, please see the Wind Rose (shown in the top righthand corner of the map). A Wind Rose is a vivid chart showing the wind's direction, its frequency, and its speed at a specific location. A Wind Rose shows the direction of the wind by the length of the "bars" or "petals." A day with consistent wind directions will have one or two long petals. A day with different wind directions will have many shorter similar-length petals. For instance, a day with one long petal pointing north (N) means that winds mainly blew from the north in a southerly direction. The Wind Rose also shows a percentage (%) of time during which the wind blew in one direction or another.

## Dust Monitoring



Stat	Reading (ug/m3)	Time Occurred
Min	10.1	7:35:20 AM
Max	50.8	10:30:20 AM
Avg	37.60	5/18/2024
Comments	Perimeter air monitoring conducted by START was done as a precautionary measure due to having open grids on the site. No contaminated soil was excavated or transported on this day. START shutdown the Dust Trak units at 1210 hrs with permission from the OSC and demobilized from the site at 1300 hrs.	

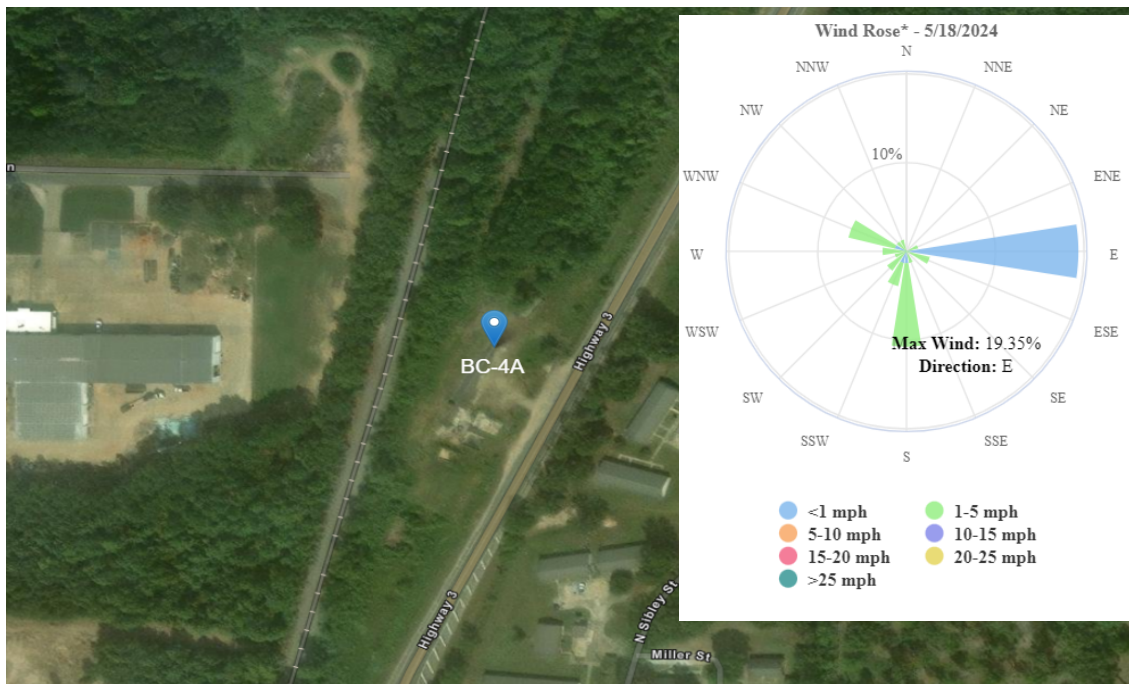




# Benton Creosote

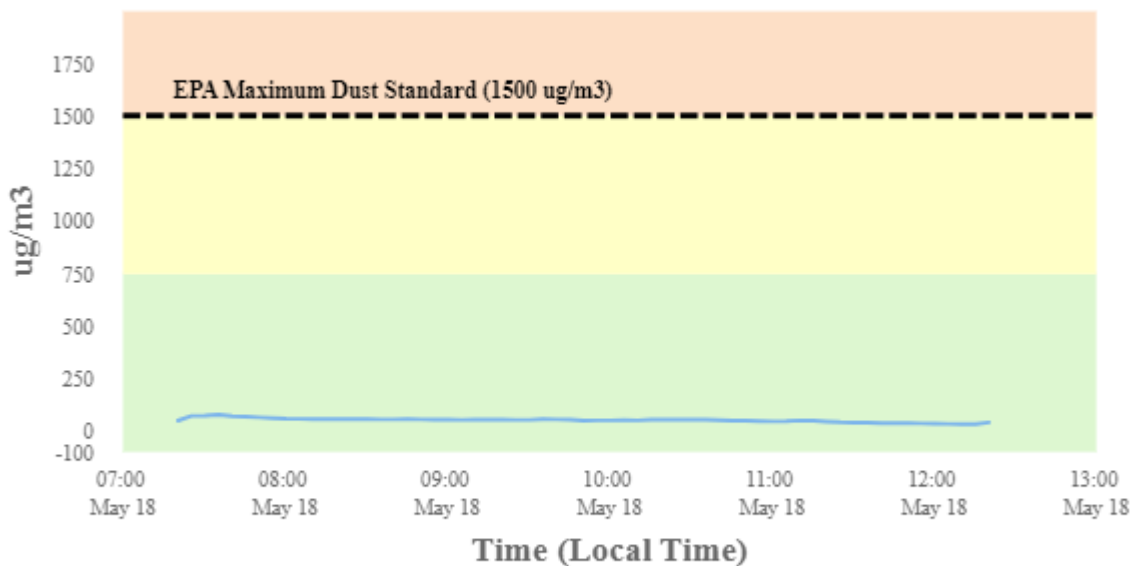
## Perimeter Air Monitoring Daily Report (5/18/2024)

### For Location BC-4A



To better understand in what direction and how strong the wind is blowing at the Benton Creosote Site, please see the Wind Rose (shown in the top righthand corner of the map). A Wind Rose is a vivid chart showing the wind's direction, its frequency, and its speed at a specific location. A Wind Rose shows the direction of the wind by the length of the "bars" or "petals." A day with consistent wind directions will have one or two long petals. A day with different wind directions will have many shorter similar-length petals. For instance, a day with one long petal pointing north (N) means that winds mainly blew from the north in a southerly direction. The Wind Rose also shows a percentage (%) of time during which the wind blew in one direction or another.

## Dust Monitoring



Stat	Reading (ug/m3)	Time Occurred
Min	27.18	12:15:20 PM
Max	73.63	7:35:20 AM
Avg	46.99	5/18/2024
Comments	Perimeter air monitoring conducted by START was done as a precautionary measure due to having open grids on the site. No contaminated soil was excavated or transported on this day. START shutdown the Dust Trak units at 1210 hrs with permission from the OSC and demobilized from the site at 1300 hrs.	