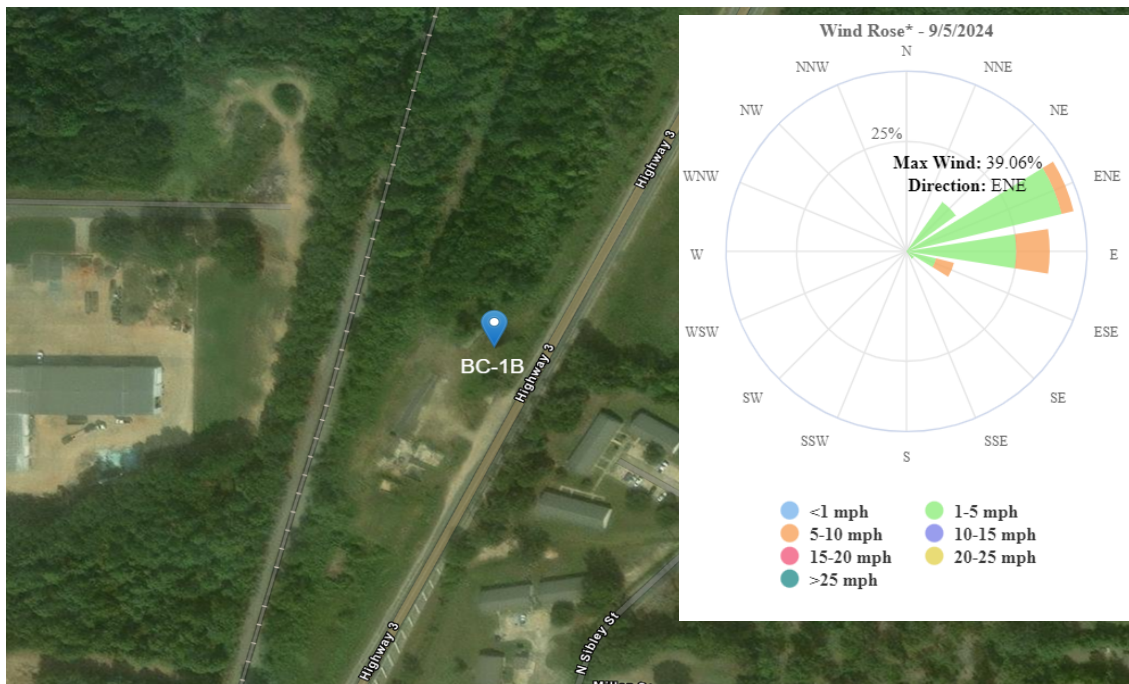




Benton Creosote

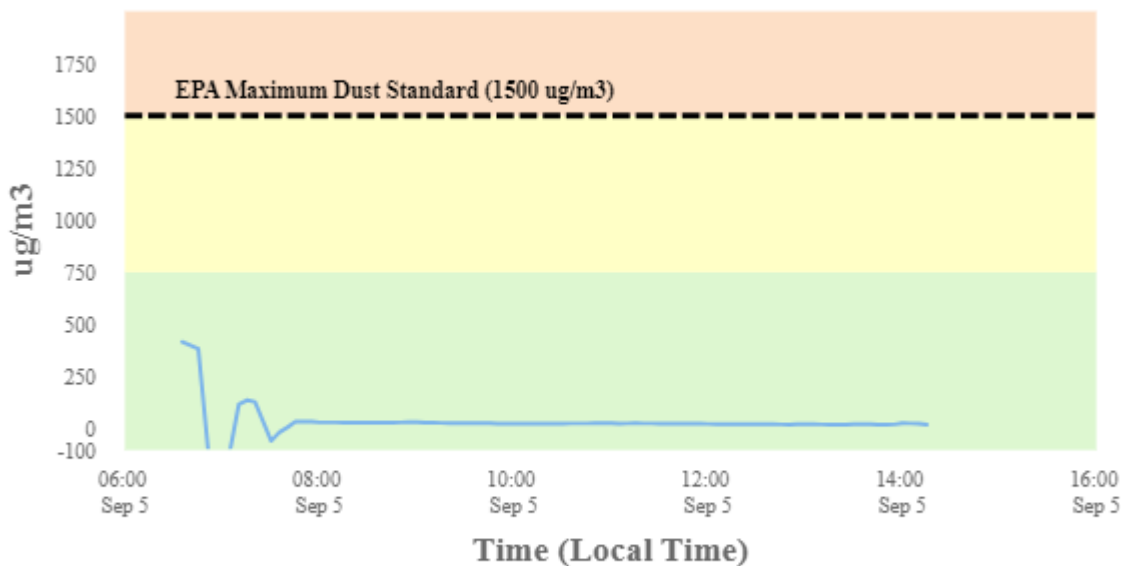
Perimeter Air Monitoring Daily Report (9/5/2024)

For Location BC-1B



To better understand in what direction and how strong the wind is blowing at the Benton Creosote Site, please see the Wind Rose (shown in the top righthand corner of the map). A Wind Rose is a vivid chart showing the wind's direction, its frequency, and its speed at a specific location. A Wind Rose shows the direction of the wind by the length of the "bars" or "petals." A day with consistent wind directions will have one or two long petals. A day with different wind directions will have many shorter similar-length petals. For instance, a day with one long petal pointing north (N) means that winds mainly blew from the north in a southerly direction. The Wind Rose also shows a percentage (%) of time during which the wind blew in one direction or another.

Dust Monitoring



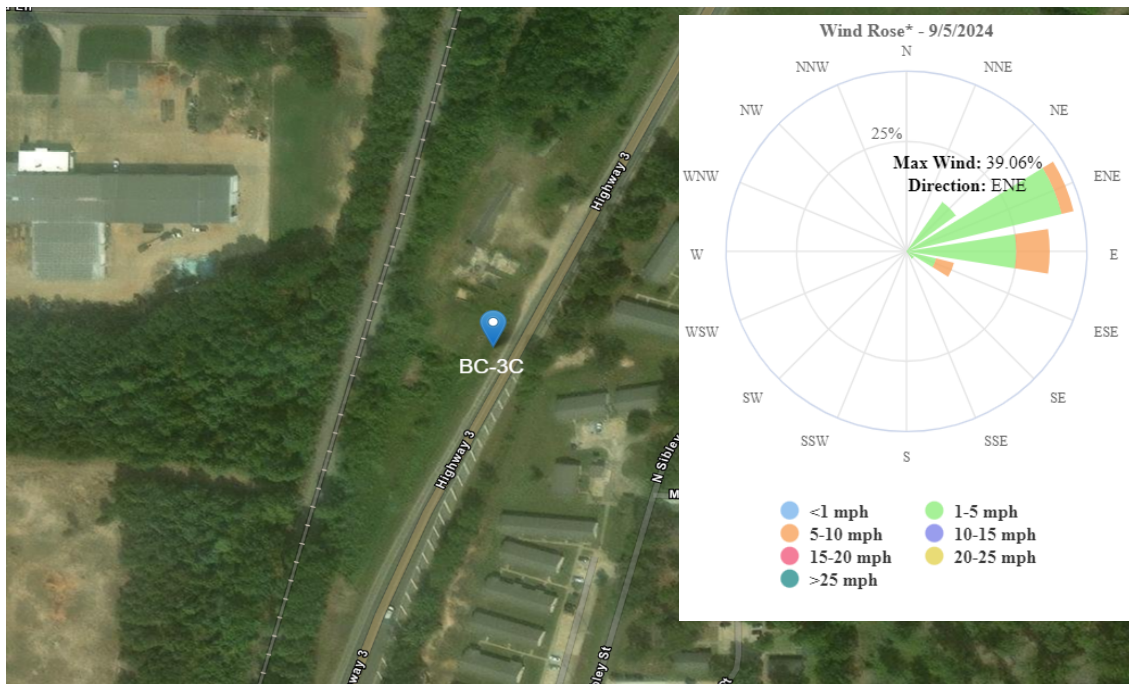
Stat	Reading (ug/m3)	Time Occurred
Min	0	6:55:20 AM
Max	412.2	6:35:20 AM
Avg	23.84	9/5/2024
Comments	Dustrak Station 1 was not functioning properly between 0635 and 0730 due to a power cord that was not connected properly. This is the reason for the negative readings shown on the attached graph. Once the cable was secured properly at approximately 0730, Station 1 began functioning and recording air monitoring data properly once again.	



Benton Creosote

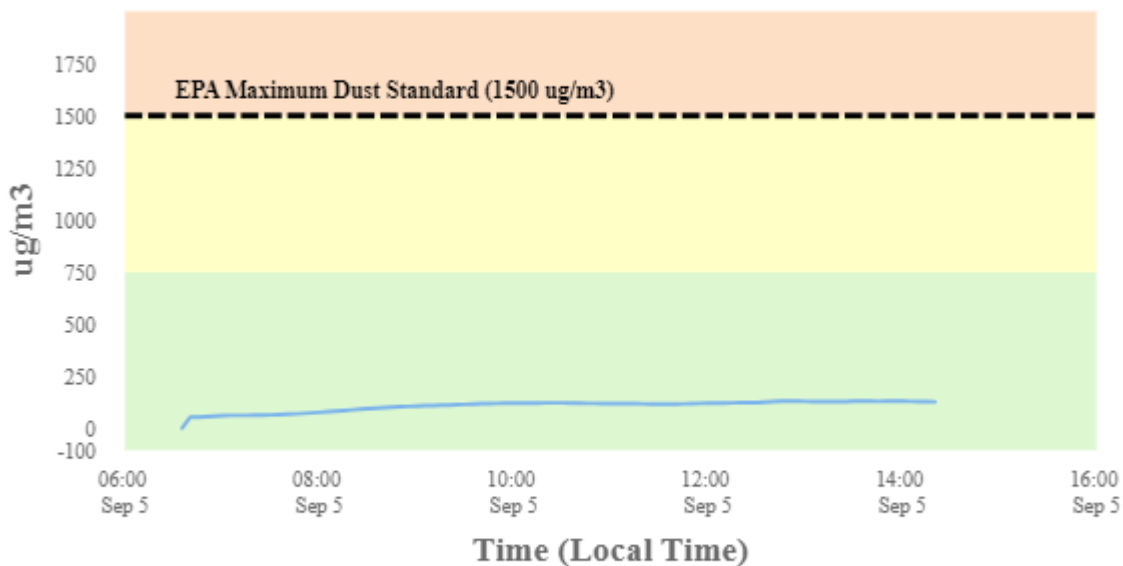
Perimeter Air Monitoring Daily Report (9/5/2024)

For Location BC-3C



To better understand in what direction and how strong the wind is blowing at the Benton Creosote Site, please see the Wind Rose (shown in the top righthand corner of the map). A Wind Rose is a vivid chart showing the wind's direction, its frequency, and its speed at a specific location. A Wind Rose shows the direction of the wind by the length of the "bars" or "petals." A day with consistent wind directions will have one or two long petals. A day with different wind directions will have many shorter similar-length petals. For instance, a day with one long petal pointing north (N) means that winds mainly blew from the north in a southerly direction. The Wind Rose also shows a percentage (%) of time during which the wind blew in one direction or another.

Dust Monitoring



Stat	Reading (ug/m3)	Time Occurred
Min	0	6:35:20 AM
Max	129.2	12:50:20 PM
Avg	105.36	9/5/2024
Comments		