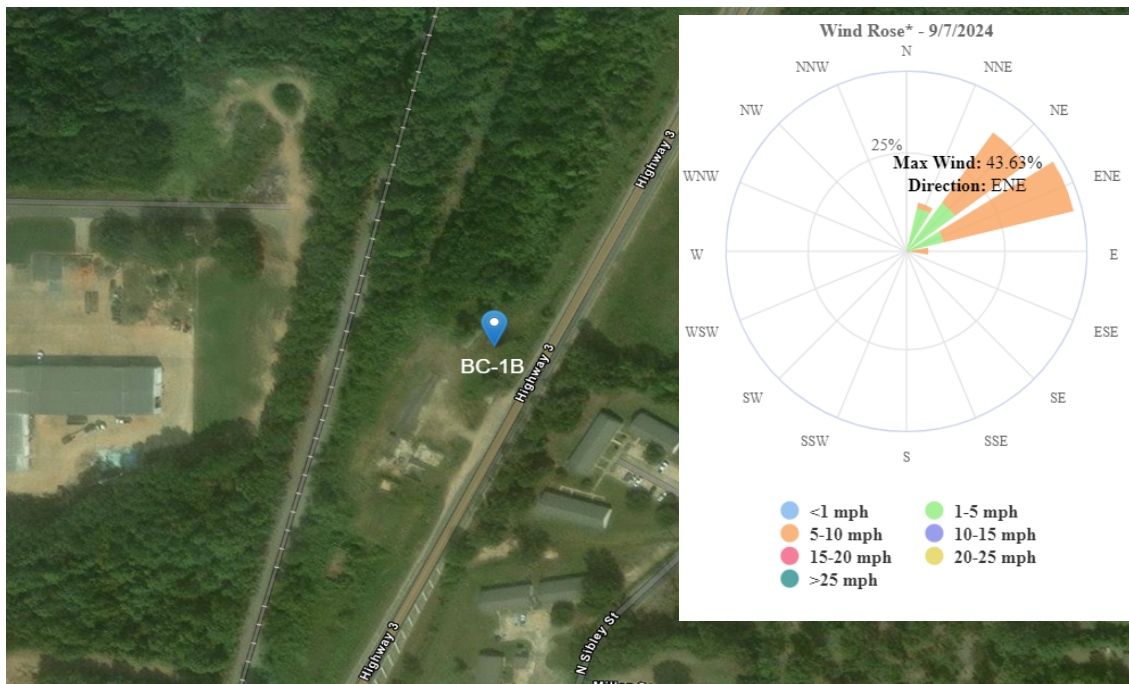




Benton Creosote

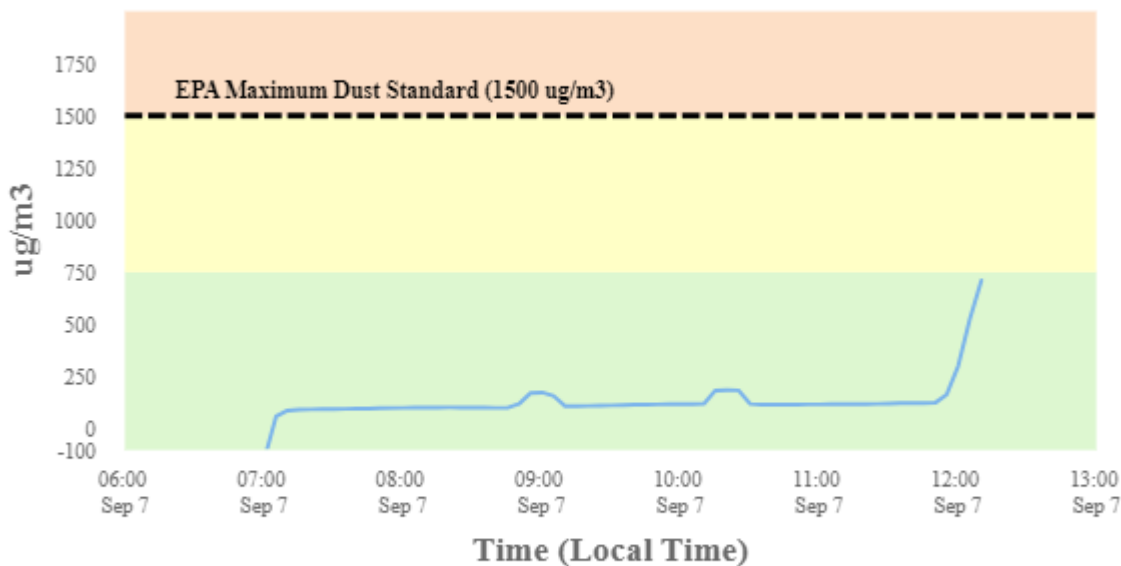
Perimeter Air Monitoring Daily Report (9/7/2024)

For Location BC-1B



To better understand in what direction and how strong the wind is blowing at the Benton Creosote Site, please see the Wind Rose (shown in the top righthand corner of the map). A Wind Rose is a vivid chart showing the wind's direction, its frequency, and its speed at a specific location. A Wind Rose shows the direction of the wind by the length of the "bars" or "petals." A day with consistent wind directions will have one or two long petals. A day with different wind directions will have many shorter similar-length petals. For instance, a day with one long petal pointing north (N) means that winds mainly blew from the north in a southerly direction. The Wind Rose also shows a percentage (%) of time during which the wind blew in one direction or another.

Dust Monitoring



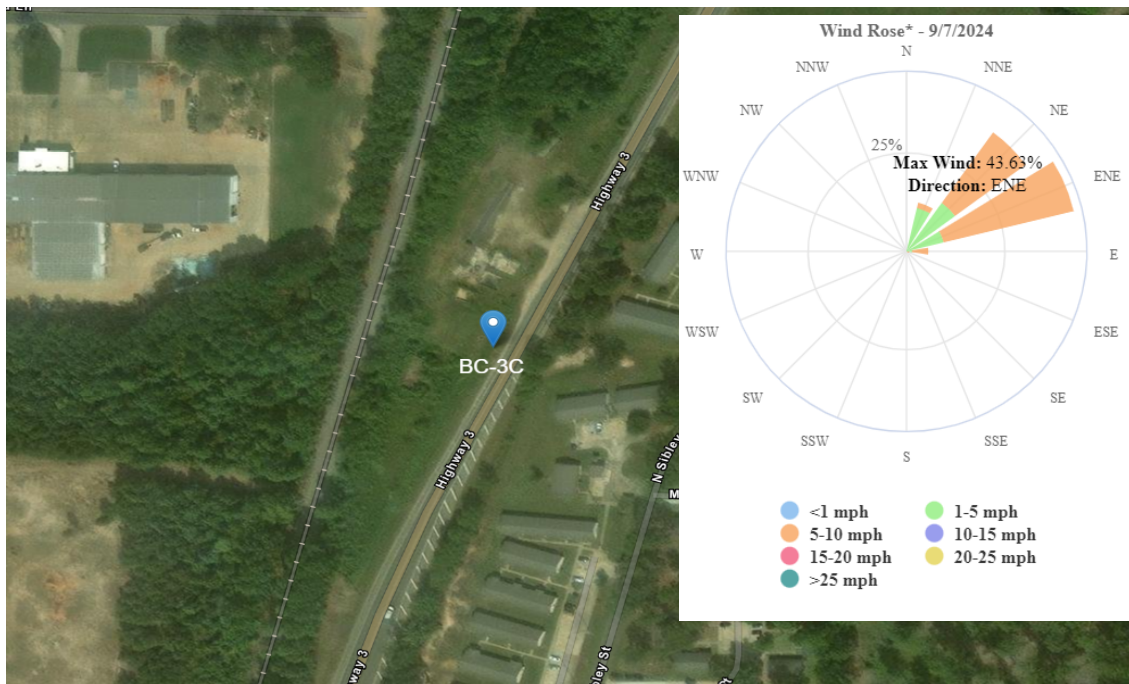
Stat	Reading (ug/m3)	Time Occurred
Min	0	6:55:20 AM
Max	523.1	12:05:20 PM
Avg	110.22	9/7/2024
Comments	There was an increase in dust monitoring readings from 121 ug/m3 at 1150, to 706 ug/m3 at 1210. This spike was likely caused by high winds that moved into the area during this time period and caused significant amount of airborne dust in the site's gravel parking lot. Still, no readings were near or above the EPA Maximum Dust Standard of 1500 ug/m3.	



Benton Creosote

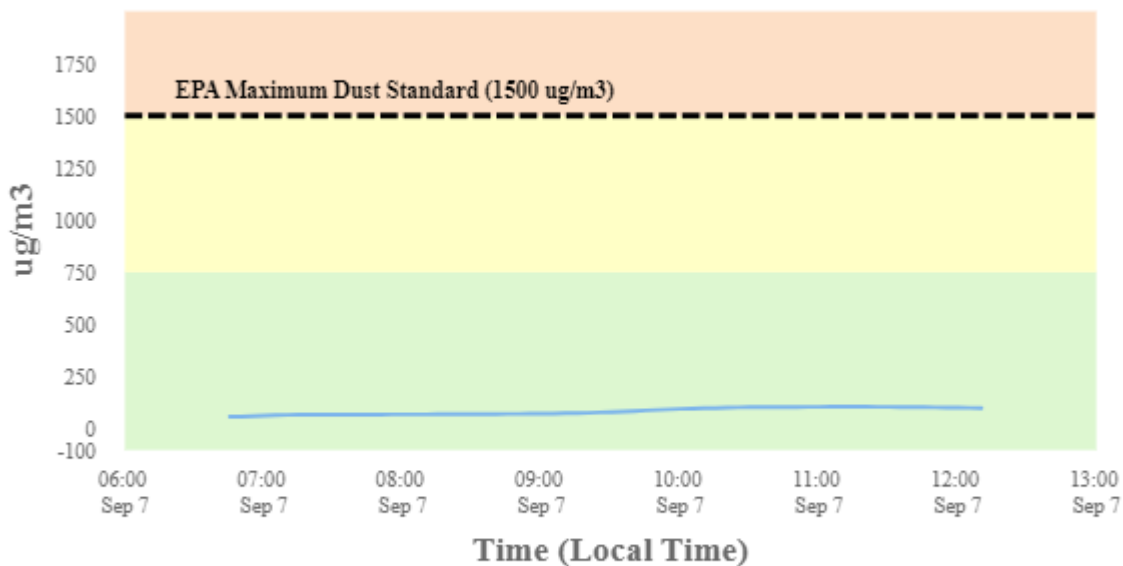
Perimeter Air Monitoring Daily Report (9/7/2024)

For Location BC-3C



To better understand in what direction and how strong the wind is blowing at the Benton Creosote Site, please see the Wind Rose (shown in the top righthand corner of the map). A Wind Rose is a vivid chart showing the wind's direction, its frequency, and its speed at a specific location. A Wind Rose shows the direction of the wind by the length of the "bars" or "petals." A day with consistent wind directions will have one or two long petals. A day with different wind directions will have many shorter similar-length petals. For instance, a day with one long petal pointing north (N) means that winds mainly blew from the north in a southerly direction. The Wind Rose also shows a percentage (%) of time during which the wind blew in one direction or another.

Dust Monitoring



Stat	Reading (ug/m3)	Time Occurred
Min	55.19	6:45:20 AM
Max	102.7	11:15:20 AM
Avg	80.92	9/7/2024
Comments		