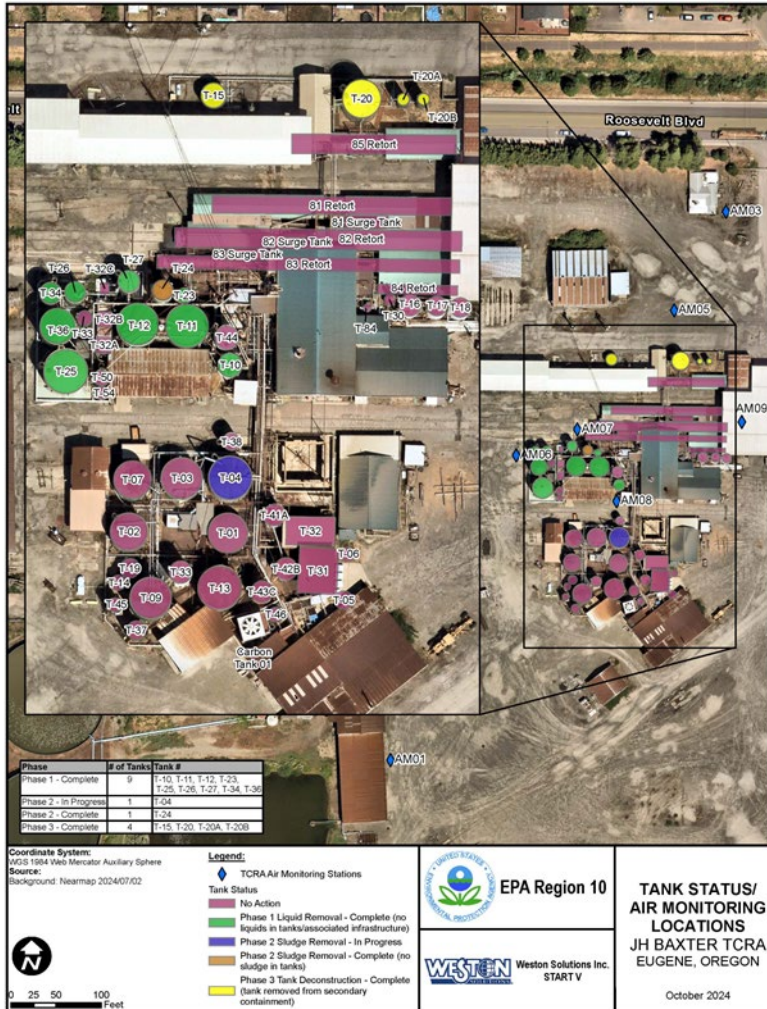


September 29 - October 06 (Operations Period #9)

- Transported 8 trucks of liquid waste for disposal. 2 WS 4.0 (creo / penta - low BTU) trucks were rejected due to high viscosity and were sent back. (see progress metrics)
- Tanks 20a/b, 20, and 15 were deconstructed and removed from Zone 1. Scrap metal was staged in dry storage building for decon, recycling / disposal activities.
- Approximately 110,000-gallons of ACZA were pumped out of Zone 2 and stored into six frac tanks.
- Liquid waste has been removed from all primary storage tanks in Zone 2.
- Began preparing Zone 2 tanks for deconstruction activities.
- Began evacuating piping associated with ACZA storage tanks.
- Constructed staging area for water treatment system.
- Continued pump-out of WS 4.0 (creo / penta - low BTU) into trucks for off-site disposal.
- EPA and ODEQ met to discuss process water treatment effluent limitations.



NH3 Air Monitoring Data (AreaRAE) September 30 - October 5, 2024

Date	Air Monitoring Station	Total Run Time	NH ₃ Min (ppm)	NH ₃ Max (ppm)	NH ₃ Average (ppm)	Percent of Readings Exceeding 25 ppm
9/30/2024	AM03	9:45	0	0	0	0%
	AM06	9:45	0	0	0	0%
	AM08	9:45	0	0	0	0%
10/1/2024	AM03	9:33	0	0	0	0%
	AM05	9:33	0	0	0	0%
	AM06	9:33	0	0	0	0%
10/2/2024	AM03	9:43	0	0	0	0%
	AM05	9:43	0	0	0	0%
	AM06	9:43	0	0	0	0%
10/3/2024	AM01	9:04	0	0	0	0%
	AM03	9:04	0	0	0	0%
	AM05	9:04	0	0	0	0%
10/4/2024	AM03	8:17	0	0	0	0%
	AM06	8:17	0	0	0	0%
10/5/2024	AM03	8:54	0	0	0	0%
	AM05	8:54	0	0	0	0%
	AM06	8:54	0	0	0	0%

VOC Air Monitoring Data (AreaRAE) September 30 - October 5, 2024

Date	Air Monitoring Station	Total Run Time	VOC Min (ppb)	VOC Max (ppb)	VOC Average (ppb)	Percent of Readings Exceeding 5 ppm
9/30/2024	AM03	9:45	0	492	186	0%
	AM06	9:45	124	903	405	0%
	AM08	9:45	0	490	214	0%
10/1/2024	AM03	9:33	0	270	49	0%
	AM05	9:33	165	415	292	0%
	AM06	9:33	0	344	114	0%
10/2/2024	AM03	9:43	0	285	64	0%
	AM05	9:43	234	990	400	0%
	AM06	9:43	0	329	161	0%
10/3/2024	AM01	9:04	0	204	80	0%
	AM03	9:04	0	182	18	0%
	AM05	9:04	33	429	254	0%
10/4/2024	AM03	8:17	109	374	189	0%
	AM06	8:17	0	53	0	0%
10/5/2024	AM03	8:54	0	334	204	0%
	AM05	8:54	403	561	499	0%
	AM06	8:54	12	360	272	0%

Particulate Air Monitoring Data (DusTrak) September 30 - October 5, 2024

Date	Air Monitoring Station	Total Run Time	Min (mg/m ³)	Max (mg/m ³)	Average (mg/m ³)	Max TWA	Percent of Readings Exceeding 0.07 mg/m ³
9/30/2024	AM03	10:56	0	0.069	0.004	0.007	0.0%
	AM06	10:56	0	0.594	0.009	0.012	0.1%
	AM08	10:56	0.005	0.029	0.009	0.014	0.0%
10/1/2024	AM03	10:00	0.002	0.061	0.012	0.020	0.0%
	AM05	10:00	0.009	0.177	0.022	0.037	0.1%
10/2/2024	AM03	7:35	0	0.09	0.003	0.005	0.0%
	AM05	7:35	0.003	0.277	0.01	0.021	0.0%
10/3/2024	AM03	9:22	0.002	0.036	0.004	0.004	0.0%
	AM05	1:52	0.008	0.035	0.010	0.010	0.0%
10/4/2024	AM03	9:15	0.005	0.189	0.023	0.046	0.0%
	AM06	9:15	0.001	0.037	0.005	0.023	0.0%
10/5/2024	AM03	9:53	0.004	0.049	0.012	0.015	0.0%
	AM05	9:53	0	0.376	0.022	0.024	1.2%

Waste Name	Tank#	Profile #	Truck#	Ship Date	Manifest #	Disposal Qty (lbs)
WS 1.0 Pentachlorophenol 3-6% in oil	T-20	CH-2793166	124011	8/14/2024	019433223FLE	16,600
WS 1.0 Pentachlorophenol 3-6% in oil	T-20	CH-2793166	17258	8/14/2024	019433219FLE	38,940
WS 1.0 Pentachlorophenol 3-6% in oil	T-20	CH-2793166	123040	8/14/2024	019443224FLE	32,200
WS 1.0 Pentachlorophenol 3-6% in oil	T-20	CH-2793166	124017	8/15/2024	019433225FLE	38,640
WS 1.0 Pentachlorophenol 3-6% in oil	T-20 & 25	CH-2793166	123063	8/16/2024	019433226FLE	36,000
WS 1.0 Pentachlorophenol 3-6% in oil	T-25	CH-2793166	124019	8/16/2024	019433227FLE	33,220
WS 1.0 Pentachlorophenol 3-6% in oil	T-25	CH-2793166	124011	8/16/2024	019433228FLE	27,380
WS 1.0 Pentachlorophenol 3-6% in oil	T-25	CH-2793166	123040	8/19/2024	019433229FLE	37,640
WS 1.0 Pentachlorophenol 3-6% in oil	T-20 & 25	CH-2793166	124017	8/20/2024	019433230FLE	39,360
WS 1.0 Pentachlorophenol 3-6% in oil	T-25	CH-2793166	123063	8/20/2024	019433231FLE	40,340
WS 1.0 Pentachlorophenol 3-6% in oil	T-25	CH-2793166	17258	8/21/2024	019433215FLE	38,940
WS 1.0 Pentachlorophenol 3-6% in oil	T-20 & 25	CH-2793166	123040	8/22/2024	019433232FLE	41,960
WS 1.0 Pentachlorophenol 3-6% in oil	T-25	CH-2793166	124017	8/23/2024	019433233FLE	37,000
WS 1.0 Pentachlorophenol 3-6% in oil	T-25/Retort 81	CH-2793166	123063	8/23/2024	019433234FLE	37,180
WS 4.0 Creosote/Penta	T-4	CH-2808188	123040	8/26/2024	019298949FLE	40,820
WS 1.0 Pentachlorophenol 3-6% in oil (Off-spec low btu<500, A22K)	20 A & B	CH-2793166	124017	8/27/2024	019433235FLE	41,100
WS 4.0 Creosote/Penta	T-4	CH-2808188	123063	8/28/2024	019298948FLE	39,160
WS 1.0 Pentachlorophenol 3-6% in oil	20-B/Retort 81/Totes	CH-2793166	14006	8/28/2024	019433236FLE	20,900
WS 4.0 Creosote/Penta	T-4	CH-2808188	17258	8/29/2024	019298944FLE	40,480
WS 4.0 Creosote/Penta	T-4	CH-2808188	123040	8/29/2024	019298945FLE	41,120
WS 4.0 Creosote/Penta	T-4	CH-2808188	124036	8/30/2024	019298946FLE	38,000
WS 4.0 Creosote/Penta	T-4	CH-2808188	124017	8/30/2024	019298947FLE	41,620
WS 4.0 Creosote/Penta (off-spec low btu<500, A22K)	T-4	CH-2808188	24067	9/3/2024	019298925FLE	39,140
WS 4.0 Creosote/Penta	T-4 & T-2	CH-2808188	123063	9/3/2024	019298926FLE	38,900
WS 4.0 Creosote/Penta	T-2	CH-2808188	123040	9/3/2024	019298927FLE	42,360
WS 5.0 Water 50/50 Creo/Penta Low BTU	500 bbl Close Top	CH-2797074	124017	9/3/2024	019298950FLE	39,380
WS 4.0 Creosote/Penta	T-2	CH-2808188	124036	9/5/2024	019298928FLE	37,560
WS 4.0 Creosote/Penta	T-2	CH-2808188	123063	9/17/2024	019298929FLE	39,960
WS 4.0 Creosote/Penta	T-2	CH-2808188	123040	9/19/2024	019298930FLE	40,480
WS 5.0 Water 50/50 Creo/Penta Low BTU	500 bbl Close Top # 4	CH-2797074	124036	9/19/2024	019298951FLE	32,580
WS 4.0 Creosote/Penta	T-2	CH-2808188	124017	9/20/2024	019298931FLE	35,740
WS 4.0 Creosote/Penta (low btu, CH notified9/23)	T-7	CH-2808188	124036	9/23/2024	019298932FLE	25,500
WS 4.0 Creosote/Penta	T-2 & T-7	CH-2808188	123040	9/23/2024	019298933FLE	40,660
WS 5.0 Water 50/50 Creo/Penta Low BTU	T-1/500 bbl Tank 4	CH-2797074	124017	9/25/2024	019298952FLE	37,960
WS 5.0 Water 50/50 Creo/Penta Low BTU	T-26	CH-2797074	123040	9/26/2024	019298953FLE	40,960
WS 5.0 Water 50/50 Creo/Penta Low BTU	T-26	CH-2797074	3270	9/30/2024	019298956FLE	28,920
WS 4.0 Creosote/Penta	T-26	CH-2808188	124017	9/30/2024	019298934FLE	39,100
WS 4.0 Creosote/Penta	T-27	CH-2808188	123040	9/30/2024	019298936FLE	41,700
WS 4.0 Creosote/Penta	T-27	CH-2808188	124036	9/30/2024	019298937FLE	30,520
Rejected 10/7/24 due to high sludge- WS 5.0 Water 50/50 Creo/Penta Low BTU	T-26	CH-2797074	124017	10/2/2024	019298956FLE	
Rejected 10/7/24 due to high sludge- WS 5.0 Water 50/50 Creo/Penta Low BTU	T-27&500 bbl	CH-2797074	123040	10/3/2024	019298957FLE	
WS 5.0 Water 50/50 Creo/Penta Low BTU	500 bbl Close Top # 4	CH-2797074	124036	10/3/2024	019298958FLE	29,480
WS 5.0 Water 50/50 Creo/Penta Low BTU	500 bbl Close Top # 4	CH-2797074	SIR0060	10/3/2024	019298959FLE	30,040
Totals through Operational Period #9						1,489,540.00