

Community Update Fact Sheet

Yukon, PA | EPA Region 3 | March 2026



EPA Groundwater Investigation

The U.S. Environmental Protection Agency (EPA) is investigating the groundwater near the MAX Environmental Technologies landfill in Yukon, Pennsylvania.

Starting in Spring 2026, EPA will sample nearby residential drinking water wells to evaluate if there is potential groundwater contamination originating from the MAX Environmental landfill.

This sampling data will help EPA determine if further actions are needed to protect human health and the environment.

EPA would like to sample your private well at no cost!

As a precautionary, yet important measure, EPA has identified your home as one we would like to sample.

Contact us to participate!

Joseph Gawarzewski

On-Scene Coordinator
215-435-3945
Gawarzewski.Joseph@epa.gov

John Brakeall

Community Involvement Coordinator
267-649-2977
Brakeall.John@epa.gov

Miranda Cento

Community Involvement Coordinator
215-814-3273
Cento.Miranda.N@epa.gov



Figure 1. Photo of private well sample collection.

WHAT DOES SAMPLING INVOLVE?

- Sample collection will take 30-60 minutes.
- Sample results are confidential and will be sent only to the homeowner.
- The homeowner will need to sign an access agreement granting EPA permission to enter their property and collect samples.
- **To submit a signed access agreement via mail**, please sign the enclosed access agreement and mail back with the enclosed prepaid envelope.
- **To submit a signed access agreement via email**, follow the link or scan the QR code below to obtain a digital copy of the access agreement. Then, send a signed copy via email to Miranda Cento at cento.miranda.n@epa.gov.

<https://shorturl.at/zlswb>



WHAT TO EXPECT AND NEXT STEPS

- After samples are collected, EPA will send them to a certified laboratory for analysis.
- Once analyzed, EPA will mail the homeowner a copy of their sample results. It may take about 2 months for sample results to be mailed out.
- EPA will communicate with the homeowner if further investigation or actions are needed to protect human health and the environment.

CURRENT SITE STATUS

- MAX Environmental is currently under EPA orders for violations under the Clean Water Act (CWA) and Resource Conservation and Recovery Act (RCRA).
- The Pennsylvania Department of Environmental Protection (PADEP) continues to regulate on-going activities at the landfill.
- EPA continues to work closely with PADEP to investigate potential contamination from the MAX Environmental landfill to determine if further investigation or actions are needed.
- Waste operations are currently permitted on 137 acres of the 160-acre landfill.
- Waste management units at the landfill include:
 - Five closed impoundments covering 25.5 acres,
 - An active 16.5-acre solid waste landfill (Area 6 shown in Figure 2),
 - Waste storage tanks and containers,
 - Waste treatment tanks, and
 - A leachate management wastewater treatment system.
- Waste received by the landfill is required to be treated before being disposed.

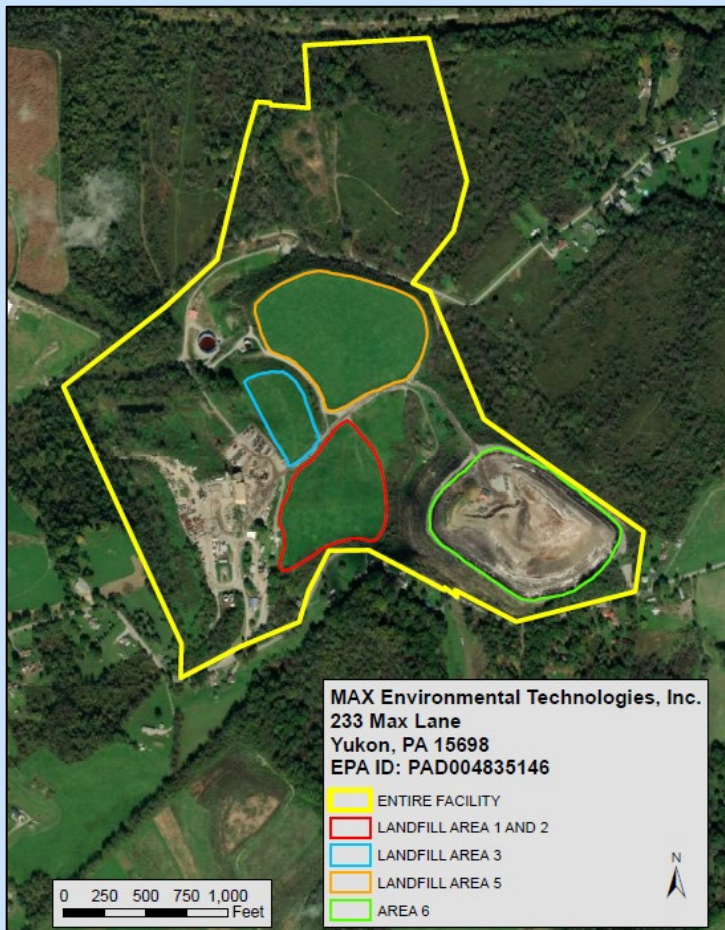


Figure 2. MAX Environmental Landfill site map located approximately 30 miles southeast of Pittsburgh, PA, in South Huntingdon Township, Westmoreland County, Pennsylvania.



Figure 3. Max Environmental on-site wastewater treatment plant. Photo taken during a 2023 EPA inspection.

SITE HISTORY HIGHLIGHTS

- **Prior to 1964:** The site operated as a strip mine.
- **1964:** MAX Environmental Technologies began operations as a landfill that accepted steel and glass industrial waste for treatment and disposal.
- **1990:** The landfill began receiving the following types of wastes for treatment and disposal:
 - Solids, including slag,
 - Electric arc furnace dust,
 - Metal-impacted soils, and
 - Drill cuttings from the oil and gas industry.
- **2023:** An EPA inspection of the landfill found multiple CWA and RCRA violations.
- **2024:** EPA ordered MAX Environmental to immediately begin work to:
 - Return to compliance with their CWA and RCRA permits,
 - Eliminate the potential for release of hazardous waste into the environment, and
 - Ensure that future ongoing operations do not cause or contribute to hazardous releases.

LEARN MORE ABOUT EPA

Follow the link or scan the QR code below to learn more about EPA

www.Epa.Gov

