

The Region 5 Regional Response Team developed Tribal Emergency Response Fact Sheets to provide emergency responders with important government contacts and information related to areas of Tribal interest. Responders are encouraged to view this information in combination with the GIS-based emergency response tools on RRT5.org.

To access these tools, visit [rrt5.org/InteractiveMapping](http://rrt5.org/InteractiveMapping) or reach out to RRT5 Coordinator Barbi Lee at [Lee.Barbi@epa.gov](mailto:Lee.Barbi@epa.gov).

# Oneida Nation of Wisconsin Emergency Response Fact Sheet

See more Fact Sheets at: [rrt5.org/Library/TribalFactsheets](http://rrt5.org/Library/TribalFactsheets)

Quick Jump:

[Reservation and Trust Land Map\(s\)](#)

[Key Information](#)

[Acronym List](#)

[Data Resources](#)

[Update Log](#)

# Fact Sheet: Oneida Nation of Wisconsin

Brown, Outagamie Counties, WI

Reservation and Trust Land Map(s)

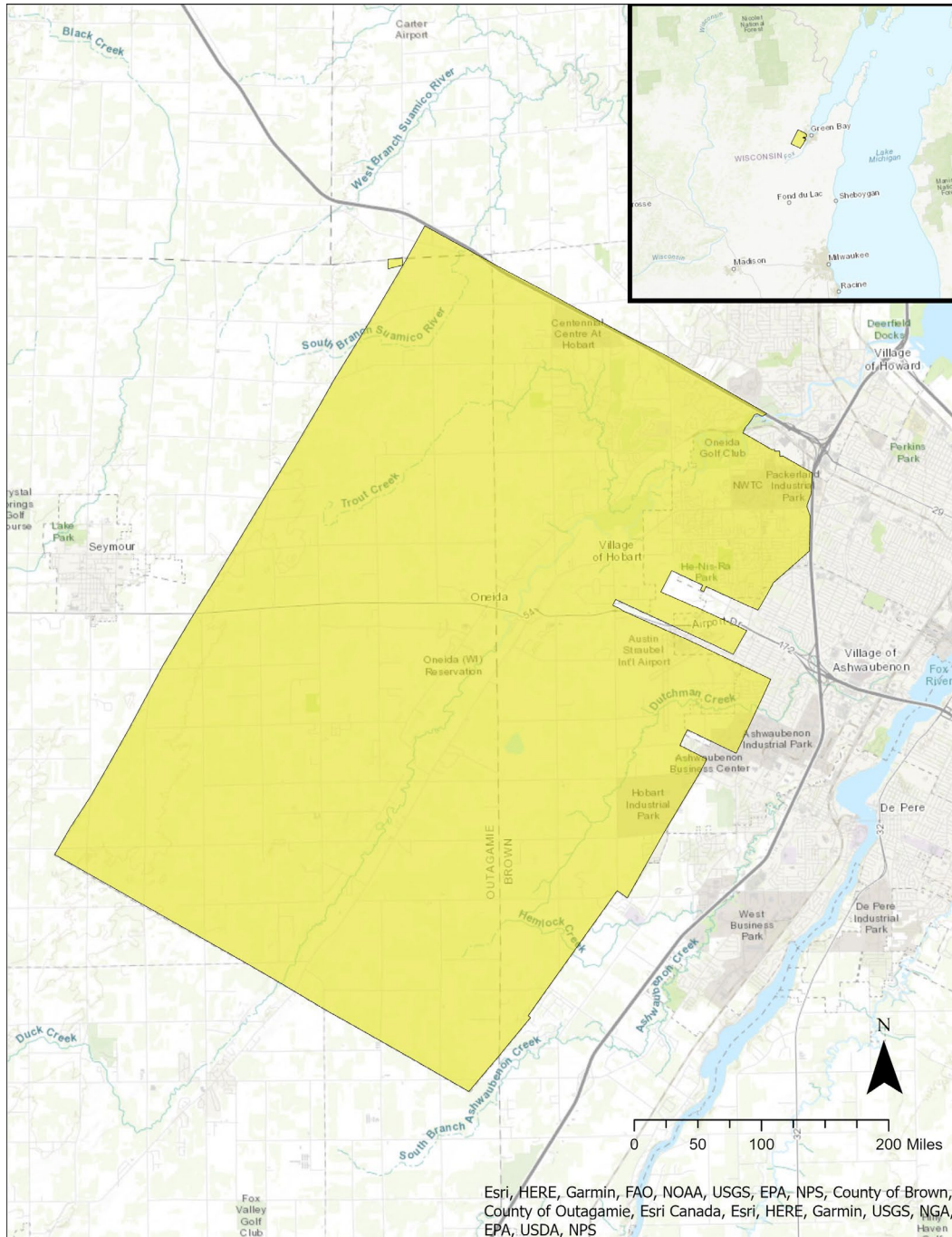


Image of Oneida Nation of Wisconsin Reservation and trust lands.

# Fact Sheet: Oneida Nation of Wisconsin

Brown, Outagamie Counties; Wisconsin

## Key Information

<p><b>National Response Center (staffed 24 hours):</b> 800-424-8802</p> <p><b>WI Pollution Emergency Alert System Hotline:</b> 800-943-0003</p> <p><b>WI State Patrol Northeast Region:</b> 920-929-3700</p> <p><b>WI Department of Health Services, Environmental Health:</b> 608-267-3227</p> <p><a href="#">Wisconsin Healthcare Emergency Readiness Coalitions</a></p> <p><b>For public health emergencies, contact: 24-Hour Outagamie County Public Health Department:</b> 920-832-4646</p> <p><b>WI Department of Natural Resources:</b> 1-888-936-7463</p>	<p><b>CONTACTS</b></p> <p><b>Emergency: 911</b></p> <p><b>Tribal Emergency Management Director:</b> Kaylynn Biely, 920-869-6650, <a href="mailto:kbiely@oneidanation.org">kbiely@oneidanation.org</a>  <b>Tribal Environmental Compliance Specialist:</b> Maureen Perkins, 920-869-4548, <a href="mailto:mperkins@oneidanation.org">mperkins@oneidanation.org</a>  <b>Tribal Historic Preservation Officer (THPO):</b> Kanani Nunies, 920-496-5379, <a href="mailto:oneida_thpo@oneidanation.org">oneida_thpo@oneidanation.org</a>; <a href="mailto:knunies@oneidanation.org">knunies@oneidanation.org</a>  <b>Tribal Environmental, Land &amp; Agriculture Division Director:</b> Eric McLester, 920-869-4950, <a href="mailto:emclest2@oneidanation.org">emclest2@oneidanation.org</a></p> <p><b>Tribal Police:</b> 920-869-2026; Non-Emergency: 920-869-2239  <b>Tribal Fire and Rescue:</b> ---  <b>Tribal Health Clinic:</b> <a href="#">Oneida Community Health Center</a>, 525 Airport Drive, Oneida, WI 54155. Medical Clinic: 920-869-4979.</p> <p><b>LAND DESCRIPTION</b></p> <p><b>County FIPS Codes:</b> 55009, 55087</p> <p><b>Land Area:</b> 102 sq mi  <b>Estimated Population:</b> 27,441  <b>Major Industries:</b> Tribe operates over 1,200 acres of cash and feed crops. Great growth in industrial sector; Manufacturing, Educational services and health care  <b>Major Rail Lines:</b> Canadian National, FOXY nearby  <b>Major Roadways:</b> US41 runs just to the East; WI-54 bisects the reservation east to west and meets with WI-55; WI-29, WI-172 run nearby  <b>Major Towns:</b> Oneida, Village of Hobart  <b>Major Water Bodies:</b> Lake Michigan, Green Bay, Fox River, Duck Creek, Duchman Creek, Trout Creek  <b>Ports:</b> None known</p> <p><b>CLOSEST HOSPITALS WITH TRAUMA CENTERS</b></p> <p><b>St. Mary’s Hospital Medical Center– Green Bay (Level III) (Closest):</b> 1726 Shawano Ave. Green Bay, Wisconsin 54303. 920-498-4200.  <b>HSHS St. Vincent Hospital (Level II):</b> 835 S Van Buren St. Green Bay, WI 54301. 920-433-0111.</p> <p><b>OTHER HOSPITALS</b></p> <p><b>Ascension NE Wisconsin – St. Elizabeth Campus (Level III) – Listed on Tribal Emergency Response Plan:</b> 1506 S Oneida St, Appleton, WI 54915. 920-738-2000.</p> <p><b>CLOSEST BURN UNIT</b></p> <p><b>University of Wisconsin Burn and Wound Center (Level I):</b> 600 Highland Ave., Madison, WI 53792. 608-264-8040. <a href="#">Burn and Wound Center   Locations and Clinics   UW Health</a></p> <p><b>APPLICABLE RESPONSE PLANS</b></p> <p><b>Federal:</b> <a href="#">Region 5 Regional Contingency Plan/Area Contingency Plan</a>  <b>State:</b> <a href="#">Wisconsin Emergency Response Plan</a>  <b>Tribe:</b> <a href="#">Oneida Nation Emergency Response Plan (2020-2025)</a>  <b>County / Other:</b></p> <ul style="list-style-type: none"> <li><a href="#">Brown County All Hazards Mitigation Plan (2020)</a></li> <li><a href="#">Oneida County All Hazards Mitigation Plan (2023)</a></li> </ul>
<p><b>EPA Region 5 Spill Line (staffed 24 hours):</b> 312-353-2318</p> <p><b>EPA Area OSC:</b> Colin Hendrickson Cell: 224-661-1342 <a href="mailto:Hendrickson.colin@epa.gov">Hendrickson.colin@epa.gov</a></p> <p><b>EPA Planning OSC:</b> Jacob Hassan <a href="mailto:hassan.jacob@epa.gov">hassan.jacob@epa.gov</a></p> <p><b>EPA Region 5 Tribal Liaison:</b> Margaret Vaitkus Office: 312-886-6235 <a href="mailto:vaitkus.margaret@epa.gov">vaitkus.margaret@epa.gov</a></p>	

<p><b>Electric Utilities:</b>  <b>We Energies</b> Emergency:  800-662-4797</p> <p><b>Gas Utilities:</b>  <b>Wisconsin Public Service</b>  Emergency: 800-450-7280</p> <p><b>Pipelines:</b>  <a href="https://www.npms.phmsa.dot.gov/PublicViewer">https://www.npms.phmsa.dot.gov/  PublicViewer</a>  Gas: ---  <b>Company:</b> Phone</p> <p><u>Hazardous Liquids</u>  1 within 10 mile radius:  <b>West Shore Pipeline Co.</b>  <b>(Petroleum Product):</b> 610-904-4113</p> <p><b>Types of Facilities:</b>  <b>FRP:</b> 12 within 10 miles  <b>NPDES:</b> 265 within boundaries, 825 within 10 miles  <b>RCRA:</b> 1 within 10 miles  <b>RMP:</b> 1 within boundaries, 21 within 10 miles  <b>SARA Title III:</b> None known  <b>SPCC:</b> None known  <b>TRI:</b> 11 within boundaries, 147 within 10 miles</p> <p><b>Water Intakes (Industrial):</b>  None within boundaries</p> <p><b>Tribal Water Utilities:</b>  Oneida Utilities Department</p>	<p><b>SENSITIVE AREAS</b></p> <p><b>Culturally Sensitive Areas:</b> Contact THPO listed above</p> <p><b>Environmentally Sensitive Areas:</b> 2 within 10 mile radius: Fox River Walleye Spawning Area (Important Aquatic Habitat), Cat Island (Conservation Area)  <b>Wildlife Management Areas:</b> None known  <b>Drinking Water Intakes:</b> None known  See the <a href="#">Inland Sensitivity Atlas</a> for more information.</p> <p><b>Economically Sensitive Areas:</b> None known</p> <p><b>SOURCES OF RESPONSE EQUIPMENT</b></p> <p>---</p> <p><b>HAZMAT TEAMS</b></p> <p>---</p> <p><b>FACILITIES</b></p> <p>See <a href="http://rrt5.org/InteractiveMapping/StateMaps">rrt5.org/InteractiveMapping/StateMaps</a> to access data on facility type and location.</p> <p><b>MUNICIPAL WWTP</b></p> <p><b>Oneida Wastewater Treatment Plant, Oneida Indian Reservation (NPDES ID WI0071323)</b>  West 200 State Highway 54, Oneida Indian Reservation, Oneida, Wisconsin (may be permanently closed?). 44.501662, -88.210227</p>
--	---

# Appendix

## Acronym List

**FIPS - Federal Information Processing Standards.** FIPS codes are numbers which uniquely identify geographic areas. The number of digits in FIPS codes vary depending on the level of geography. State-level FIPS codes have two digits, county-level FIPS codes have five digits of which the first two are the FIPS code of the state to which the county belongs.

**FRP - Facility Response Plan.** Facilities that could reasonably be expected to cause "substantial harm" to the environment by discharging oil into or on navigable waters are required to prepare and submit Facility Response Plans (FRPs). FRPs are submitted to the appropriate EPA Region dependent on the location of the facility. Local/Tribal Emergency Planning Committees (L/TEPC) and State Emergency Response Commissions (SERCs) may request a copy of the FRP from an owner or operator.

**NPDES - National Pollutant Discharge Elimination System.** The NPDES program authorizes point source discharges of pollutants to waters of the United States. The term pollutant is defined very broadly in the Clean Water Act and includes any type of industrial, municipal, and agricultural waste discharged into water.

**OSC – On-Scene Coordinator.** OSCs are the federal officials responsible for monitoring or directing responses to all oil spills and hazardous substance releases reported to the federal government. An OSC is an agent of either EPA or the U.S. Coast Guard, depending on where the incident occurs. EPA's OSCs have primary responsibility for spills and releases to inland areas and waters. U.S. Coast Guard's OSCs have responsibility for coastal waters and the Great Lakes.

**POC – Point of Contact.** An individual that can serve as a primary contact for an organization or program.

**PPE – Personally Protective Equipment.** PPE is equipment worn to minimize exposure to hazards that cause serious injuries and illnesses. Examples of PPE may include items such as gloves, safety glasses and shoes, respirators, and full body suits. Different levels of PPE may be recommended based on the potential exposure to hazardous materials.

**RCRA – Resource Conservation and Recovery Act.** RCRA gives EPA the authority to control hazardous waste during its many phases, including the generation, transportation, treatment, storage, and disposal of hazardous waste. RCRA also set forth a framework for the management of non-hazardous solid wastes. RCRA mainly applies to active facilities, although under certain conditions, it can address abandoned and inactive facilities.

**RMP – Risk Management Program.** The RMP rule requires facilities that use extremely hazardous substances to develop a Risk Management Plan.

**RRT5 – Regional Response Team, Region 5.** The RRT acts as a regional planning and coordination body for preparedness and response actions. The RRT5 is co-chaired by the US Coast Guard Ninth District and US Environmental Protection Agency Region V. Preparedness activities are carried out in conjunction with appropriate State Emergency Response Committees, Area Committees, Local Emergency Planning Committees and Tribal Councils and emergency programs.

**SARA Title III – Superfund Amendments and Reauthorization Act Title III.** SARA Title III establishes requirements regarding emergency planning and "Community Right-to-Know" (EPCRA) reporting on hazardous and toxic chemicals for federal, state, local, and Tribal governments, as well as regulated facilities. Facilities subject to EPCRA must comply with some primary requirements for planning, pollution prevention, emergency release notification and toxic chemical release inventory reporting.

**SPCC - Spill Prevention, Control and Countermeasure.** The Oil Pollution Prevention regulation sets forth requirements for the prevention of, preparedness for, and response to oil discharges at specific non-transportation-related facilities. The regulation requires facilities to develop and implement Spill Prevention, Control, and Countermeasure Plans and establishes procedures, methods, and equipment requirements.

**THPO – Tribal Historic Preservation Officer.** A THPO advises federal, state and local agencies on the management of Tribal historic properties and instruct municipalities on National Historic Preservation Act (NHPA) Section 106 reviews to represent Tribal interests.

**TRI – Toxics Release Inventory.** Certain facilities are required to report to the TRI Program if they meet specific threshold criteria. The TRI is a resource for learning about toxic chemical releases and pollution prevention activities reported by such facilities.

**WWTP – Wastewater Treatment Plant.** A WWTP Wastewater treatment plants process water from homes and businesses, which contains nitrogen and phosphorus from human waste, food and certain soaps and detergents. EPA regulates the discharge and treatment of wastewater under the Clean Water Act (CWA). The National Pollutant Discharge Elimination System (NPDES) issues permits to all wastewater dischargers and treatment facilities.

## Data Resources

Tribe website: [oneida-nsn.gov](http://oneida-nsn.gov)

Region 5 Response Team Inland Sensitivity Atlas (ISA): [response.epa.gov/ISA](http://response.epa.gov/ISA)

Region 5 Response Team Stakeholder and Government Maps: [rrt5.org/InteractiveMapping/StateMaps](http://rrt5.org/InteractiveMapping/StateMaps)

FEMA Resilience Analysis and Planning Tool (RAPT): [fema.gov/about/reports-and-data/resilience-analysis-planning-tool](http://fema.gov/about/reports-and-data/resilience-analysis-planning-tool)

U.S. Energy Atlas: [atlas.eia.gov/pages/energy-maps](http://atlas.eia.gov/pages/energy-maps)

Wisconsin State Patrol: [wsp.wi.gov/Pages/Contact](http://wsp.wi.gov/Pages/Contact)

Wisconsin Department of Natural Resources: [dnr.wisconsin.gov](http://dnr.wisconsin.gov)

Wisconsin Department of Health Services: [dhs.wisconsin.gov/environmental/index](http://dhs.wisconsin.gov/environmental/index)

Outagamie County: <https://www.outagamie.org/home>

Brown County Emergency Management: [browncountywi.gov/departments/emergency-management/general-information/about](http://browncountywi.gov/departments/emergency-management/general-information/about)

Outagamie County Emergency Management: [outagamie.org/government/departments-a-e/emergency-management](http://outagamie.org/government/departments-a-e/emergency-management)

## Update Log

The majority of information in this document was compiled using publicly available sources of information (shown in the [Data Resources](#) section). EPA staff attempt to review the information in this document for accuracy at least once a year and such dates of verification will be reflected in the Update Log below. Persons of relevant authority for the entities listed in this document are asked to notify the Region 5 Superfund and Emergency Management Division Tribal Coordinator Jamie Stoik ([Stoik.Jamie@epa.gov](mailto:Stoik.Jamie@epa.gov)) or their [Region 5 EPA Tribal Liaison](#) with updated information as it is known.

<b>Date</b>	April 23, 2026
<b>Summary of Changes</b>	Updated contact information for Tribe's Director of Emergency Management.
<b>Reviewer</b>	Jamie Stoik, Program Analyst, Environmental Protection Agency

<b>Date</b>	November 18, 2025
<b>Summary of Changes</b>	Added contact information based on Tribe and County website(s); updated EPA contact information; updated Data Resources; tested links.
<b>Reviewer</b>	Jamie Stoik, Program Analyst, Environmental Protection Agency