

Table 1: Weekly Perimeter Air Monitoring Summary
Allied Textile Printing Site
Paterson, Passaic County, New Jersey
April 20 2026 through April 24 2026

Date	Air Monitoring Instrument Number	Action Level Exceeded?¹	Work Day 15-Minute TWA Concentration Range (µg/m³)
April 20	ASL01	N	1.0 to 8.0
	ASL02	N	1.0 to 4.0
	ASL03	N	1.0 to 4.0
	ASL04	N	1.0 to 5.6
April 21	ASL01	N	1.0 to 6.0
	ASL02	N	1.0 to 3.0
	ASL03	N	1.0 to 6.0
	ASL048.0	N	1.0 to 5.0
April 22	ASL01	N	2.0 to 11.0
	ASL02	N	3.0 to 17.0
	ASL03	N	1.0 to 8.0
	ASL04	N	1.0 to 10.6
April 23	ASL01	N	2.4 to 18.0
	ASL02	N	1.0 to 16.0
	ASL03	N	1.0 to 11.0
	ASL04	N	1.0 to 14.4
April 24	ASL01	N	1.0 to 8.0
	ASL02	N	1.0 to 8.8
	ASL03	N	1.0 to 4.0
	ASL04	N	1.0 to 6.4

Notes:

The EPA uses air monitors to track small particles in the air called PM¹⁰, which are less than 10 micrometers in size. These particles can include dust, dirt, smoke, or asbestos fibers. The air monitors measure the average amount of PM¹⁰ in the air over 15 minutes. If the amount of PM¹⁰ is above 150 µg/m³, the monitors alert the EPA and workers on-site. If this happens, all site activities will stop, results are reported to the EPA, and dust control measures are re-evaluated. It's important to note that high levels of PM¹⁰ do not necessarily mean there is asbestos in the air. The monitors only measure the amount of particles, not what they are made of.

¹Action level utilized on-site is currently 150 µg/m³ with PM₁₀, which is compared to the average air monitoring measurement over a 15-minute period. If the action level is exceeded for a 15-minute period, on-site safety procedures are to suspend site activities, report results to the EPA On-Scene Coordinator and re-evaluate dust suppression measures.

Air monitoring is not performed during inclement weather conditions/rain and thunderstorms.

Abbreviations:

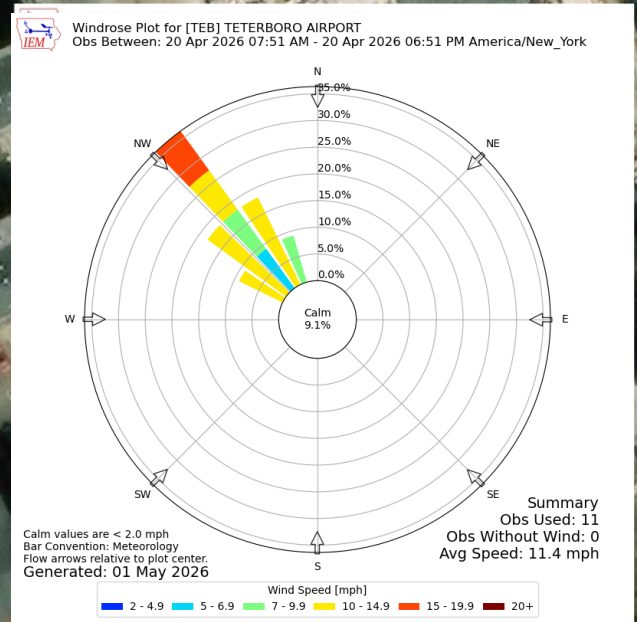
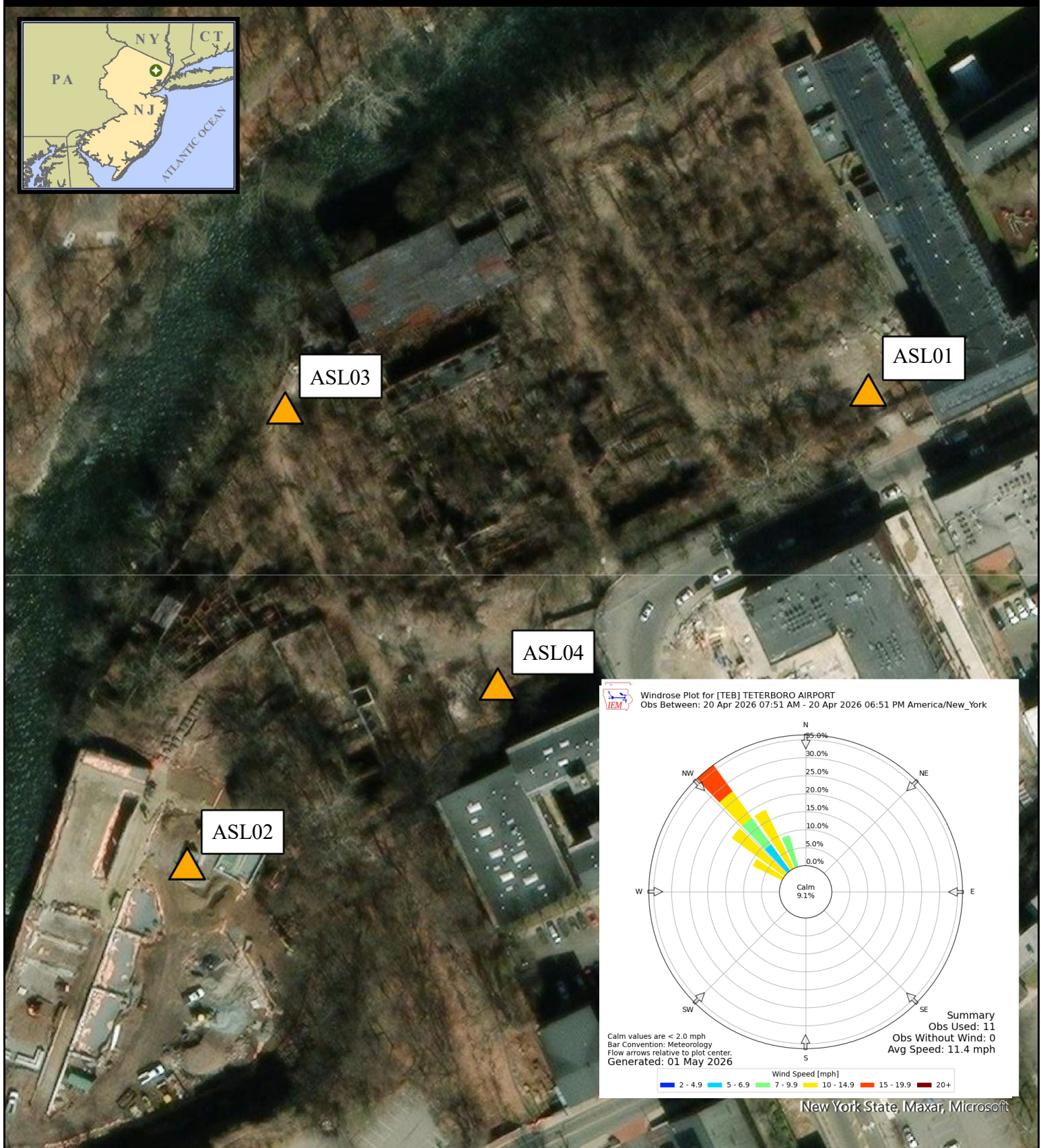
EPA - United State Environmental Protection Agency

µg/m³ - Micrograms per meter cubed

PM₁₀ - Particulate Matter, diameter 10 micrometers and smaller

TWA- Time weighted average

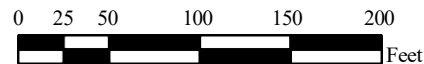
ASL -Air Station Location



New York State, Maxar, Microsoft

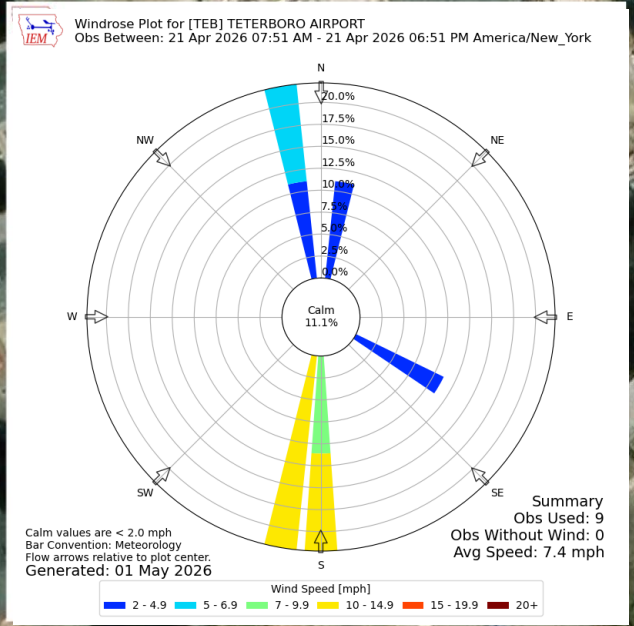
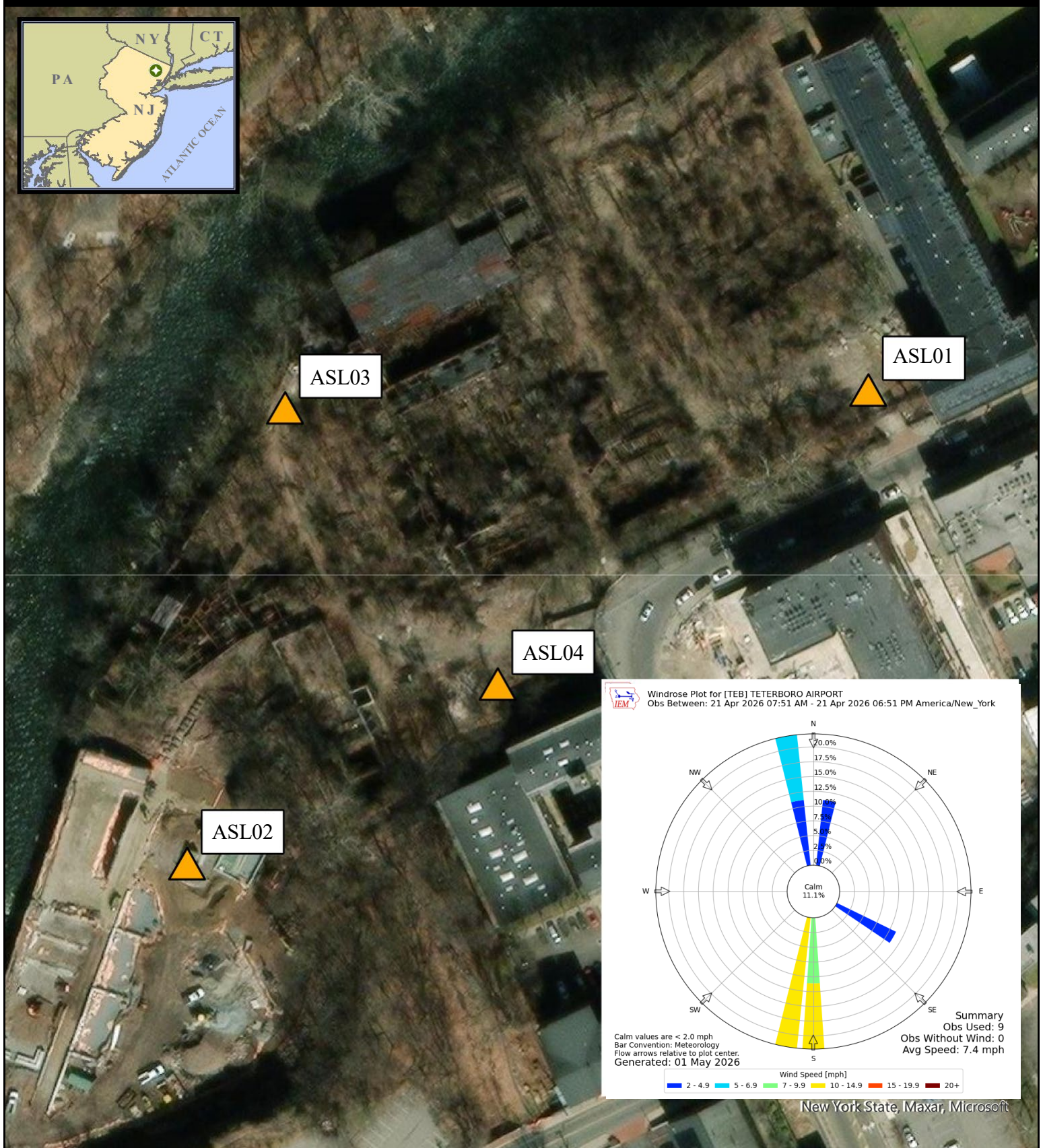
Legend
 Air Monitoring Location

- Notes:
1. Air monitoring locations are approximate.
 2. ASL01 (North Gate), ASL02 (Overlook Park Lower Fence Gate), ASL03 (North River Fence), and ASL04 (Exterior Colt Gun Building/Decontamination Zone).
 3. Air stations consist of a DustTrak II with a particulate matter smaller than 10 microns in diameter (PM10) impactor and a GilAir Plus for air asbestos air sampling.



Air Monitoring Location Map

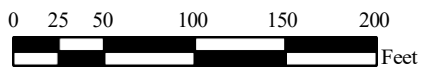
Allied Textile Printing Paterson, New Jersey	
U.S. ENVIRONMENTAL PROTECTION AGENCY SUPERFUND TECHNICAL ASSESSMENT & RESPONSE TEAM VI CONTRACT # 68HE0325D0001	
GIS ANALYST:	
EPA OSC:	C. Grell
START V SPME:	
CHARGE #:	
Weston Solutions, Inc. Federal East Division	



New York State, Maxar, Microsoft

Legend
 Air Monitoring Location

- Notes:
1. Air monitoring locations are approximate.
 2. ASL01 (North Gate), ASL02 (Overlook Park Lower Fence Gate), ASL03 (North River Fence), and ASL04 (Exterior Colt Gun Building/Decontamination Zone).
 3. Air stations consist of a DustTrak II with a particulate matter smaller than 10 microns in diameter (PM10) impactor and a GilAir Plus for air asbestos air sampling.



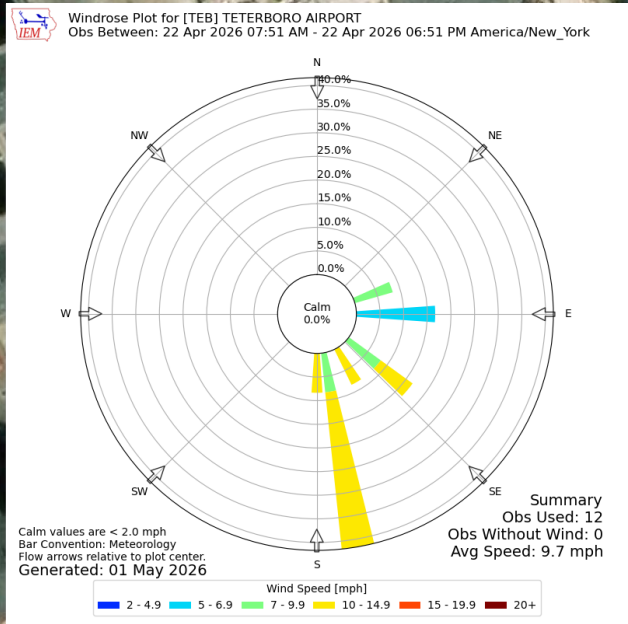
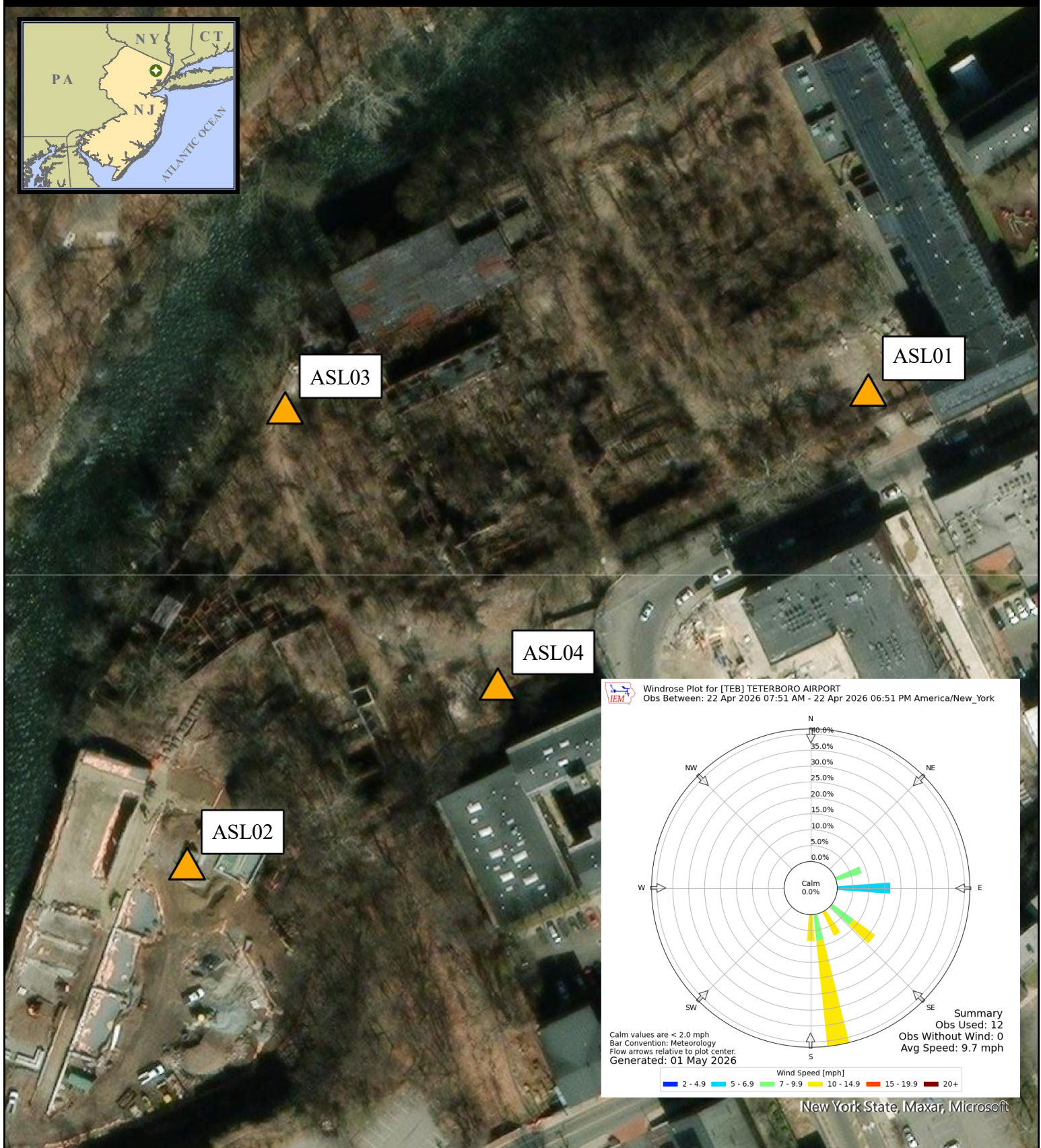
Air Monitoring Location Map

Allied Textile Printing
 Paterson, New Jersey

U.S. ENVIRONMENTAL PROTECTION AGENCY
 SUPERFUND TECHNICAL ASSESSMENT
 & RESPONSE TEAM VI
 CONTRACT # 68HE0325D0001

GIS ANALYST:	
EPA OSC:	C. Grell
START V SPME:	
CHARGE #:	

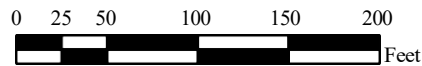
WESTON SOLUTIONS Westcon Solutions, Inc.
 Federal East Division



New York State, Maxar, Microsoft

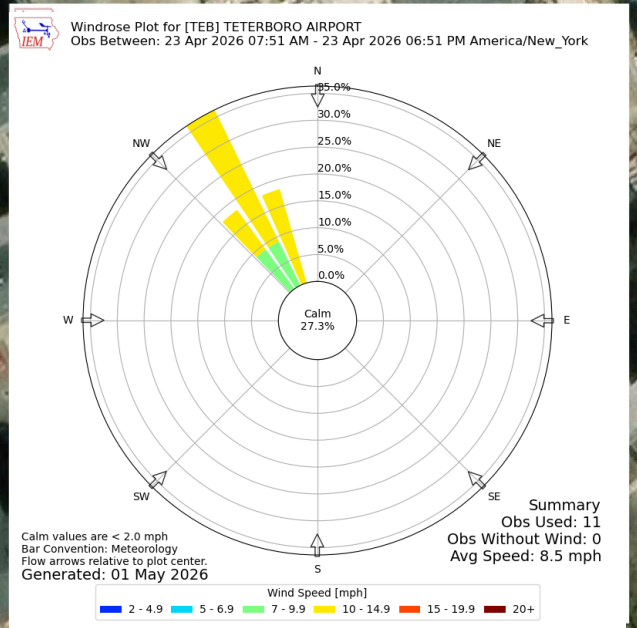
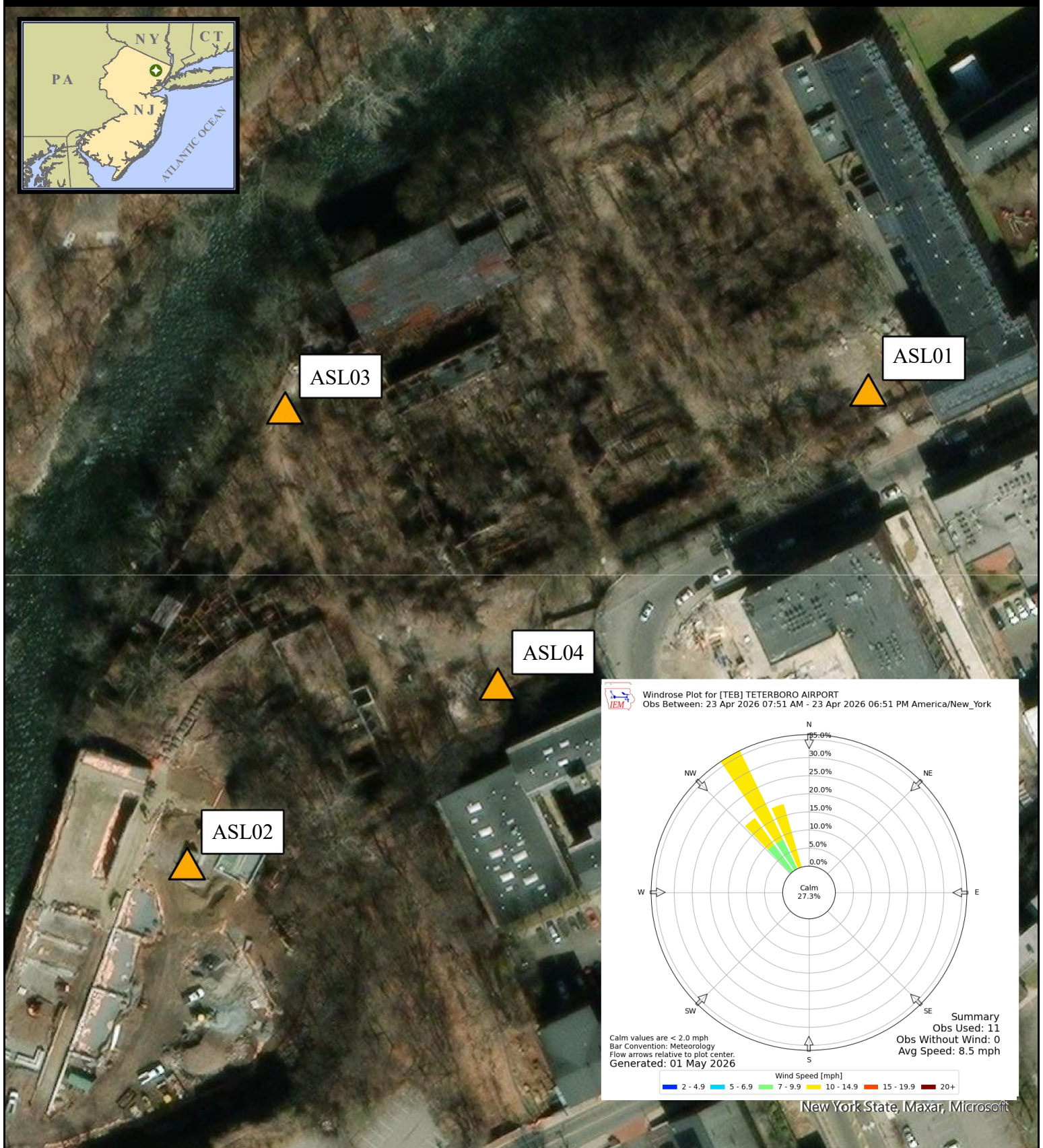
Legend
 Air Monitoring Location

- Notes:
1. Air monitoring locations are approximate.
 2. ASL01 (North Gate), ASL02 (Overlook Park Lower Fence Gate), ASL03 (North River Fence), and ASL04 (Exterior Colt Gun Building/Decontamination Zone).
 3. Air stations consist of a DustTrak II with a particulate matter smaller than 10 microns in diameter (PM10) impactor and a GilAir Plus for air asbestos air sampling.



Air Monitoring Location Map

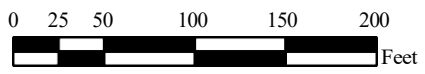
Allied Textile Printing Paterson, New Jersey	
U.S. ENVIRONMENTAL PROTECTION AGENCY SUPERFUND TECHNICAL ASSESSMENT & RESPONSE TEAM VI CONTRACT # 68HE0325D0001	
GIS ANALYST:	
EPA OSC:	C. Grell
START V SPME:	
CHARGE #:	
WESTON SOLUTIONS Weston Solutions, Inc. Federal East Division	



New York State, Maxar, Microsoft

Legend
 Air Monitoring Location

- Notes:
1. Air monitoring locations are approximate.
 2. ASL01 (North Gate), ASL02 (Overlook Park Lower Fence Gate), ASL03 (North River Fence), and ASL04 (Exterior Colt Gun Building/Decontamination Zone).
 3. Air stations consist of a DustTrak II with a particulate matter smaller than 10 microns in diameter (PM10) impactor and a GilAir Plus for air asbestos air sampling.

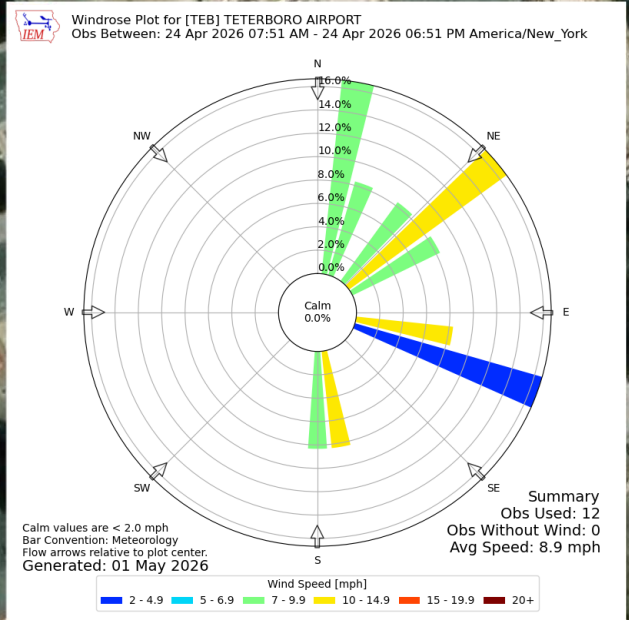
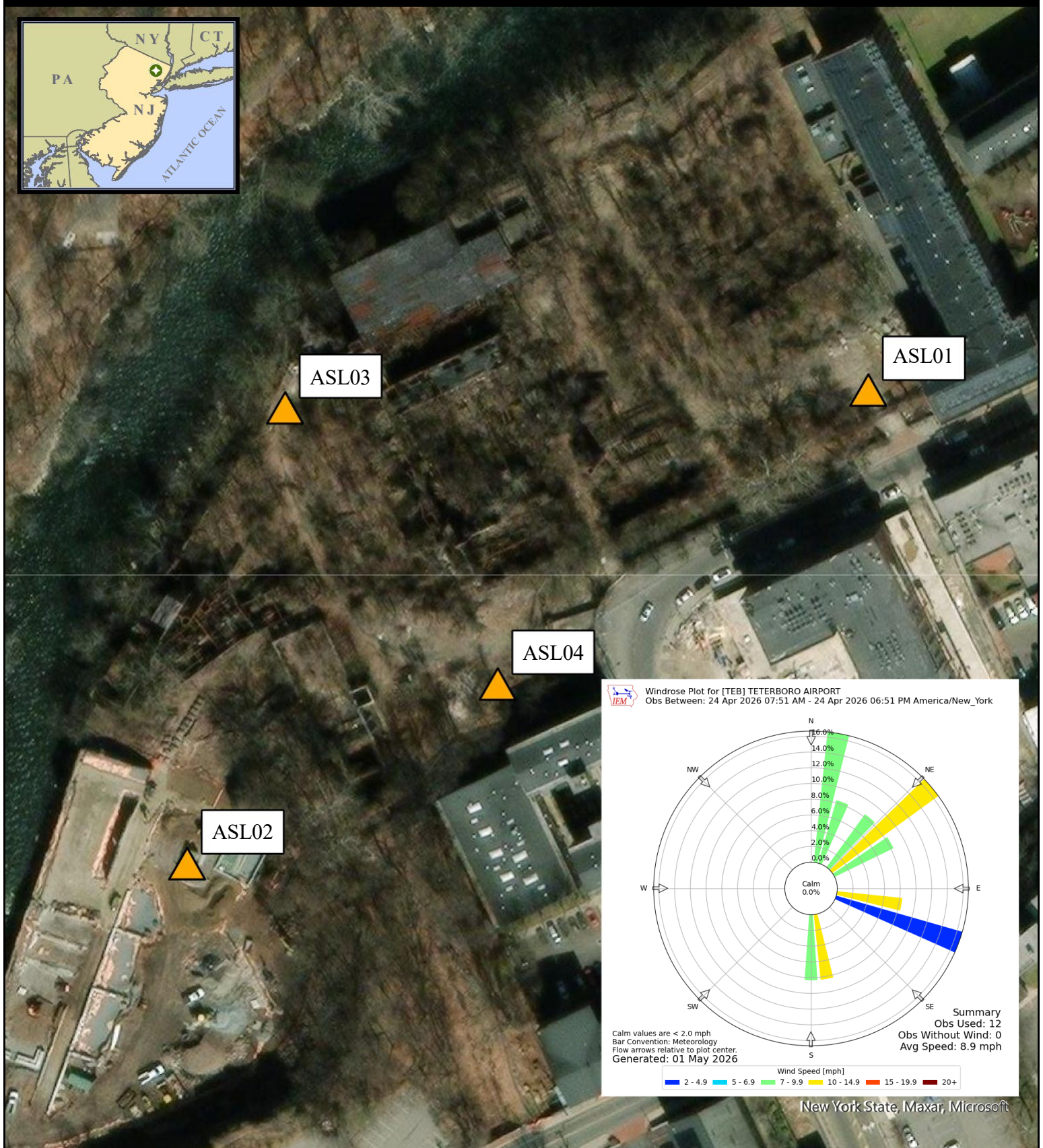


Air Monitoring Location Map

Allied Textile Printing
 Paterson, New Jersey
 U.S. ENVIRONMENTAL PROTECTION AGENCY
 SUPERFUND TECHNICAL ASSESSMENT
 & RESPONSE TEAM VI
 CONTRACT # 68HE0325D0001

GIS ANALYST:	
EPA OSC:	C. Grell
START V SPME:	
CHARGE #:	

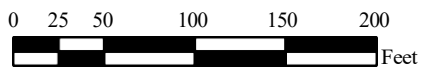




New York State, Maxar, Microsoft

Legend
 Air Monitoring Location

- Notes:
1. Air monitoring locations are approximate.
 2. ASL01 (North Gate), ASL02 (Overlook Park Lower Fence Gate), ASL03 (North River Fence), and ASL04 (Exterior Colt Gun Building/Decontamination Zone).
 3. Air stations consist of a DustTrak II with a particulate matter smaller than 10 microns in diameter (PM10) impactor and a GilAir Plus for air asbestos air sampling.



Air Monitoring Location Map

Allied Textile Printing
 Paterson, New Jersey
 U.S. ENVIRONMENTAL PROTECTION AGENCY
 SUPERFUND TECHNICAL ASSESSMENT
 & RESPONSE TEAM VI
 CONTRACT # 68HE0325D0001

GIS ANALYST:
 EPA OSC: C. Grell
 START V SPME:
 CHARGE #:

