

**Table 1: Weekly Perimeter Air Monitoring Summary**  
**Allied Textile Printing Site**  
**Paterson, Passaic County, New Jersey**  
**April 27 2026 through May 01 2026**

<b>Date</b>	<b>Air Monitoring Instrument Number</b>	<b>Action Level Exceeded?<sup>1</sup></b>	<b>Work Day 15-Minute TWA Concentration Range (µg/m<sup>3</sup>)</b>
April 27	ASL01	N	1.0 to 5.0
	ASL02	N	1.0 to 7.0
	ASL03	N	1.0 to 9.0
	ASL04	N	1.0 to 8.0
April 28	ASL01	N	1.0 to 5.0
	ASL02	N	1.0 to 7.0
	ASL03	N	1.0 to 6.0
	ASL048.0	N	1.0 to 3.0
April 29	ASL01	N	2.0 to 7.0
	ASL02	N	3.0 to 6.0
	ASL03	N	1.0 to 10.0
	ASL04	N	1.0 to 9.0
April 30	ASL01	N	2.4 to 6.0
	ASL02	N	1.0 to 10.0
	ASL03	N	1.0 to 10.0
	ASL04	N	1.0 to 11.0
May 01	ASL01	N	1.0 to 6.0
	ASL02	N	1.0 to 8.8
	ASL03	N	1.0 to 6.0
	ASL04	N	1.0 to 8.0

**Notes:**

The EPA uses air monitors to track small particles in the air called PM<sup>10</sup>, which are less than 10 micrometers in size. These particles can include dust, dirt, smoke, or asbestos fibers. The air monitors measure the average amount of PM<sup>10</sup> in the air over 15 minutes. If the amount of PM<sup>10</sup> is above 150 µg/m<sup>3</sup>, the monitors alert the EPA and workers on-site. If this happens, all site activities will stop, results are reported to the EPA, and dust control measures are re-evaluated. It's important to note that high levels of PM<sup>10</sup> do not necessarily mean there is asbestos in the air. The monitors only measure the amount of particles, not what they are made of.

<sup>1</sup>Action level utilized on-site is currently 150 µg/m<sup>3</sup> with PM<sub>10</sub>, which is compared to the average air monitoring measurement over a 15-minute period. If the action level is exceeded for a 15-minute period, on-site safety procedures are to suspend site activities, report results to the EPA On-Scene Coordinator and re-evaluate dust suppression measures.

Air monitoring is not performed during inclement weather conditions/rain and thunderstorms.

**Abbreviations:**

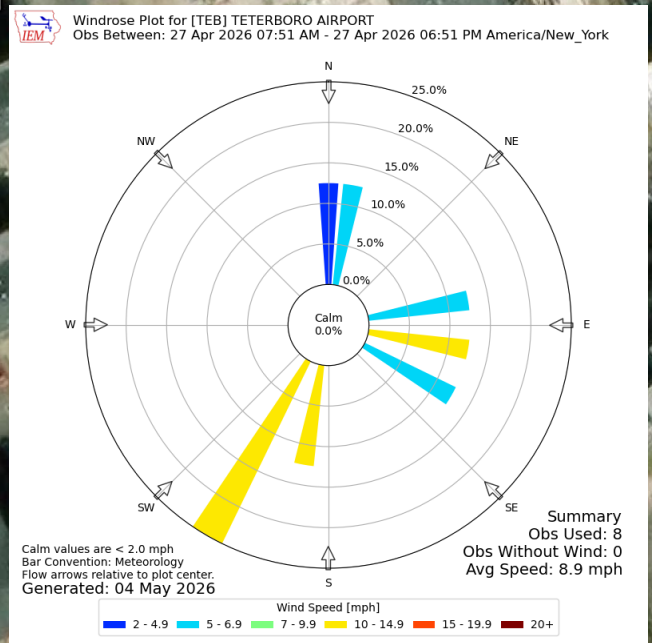
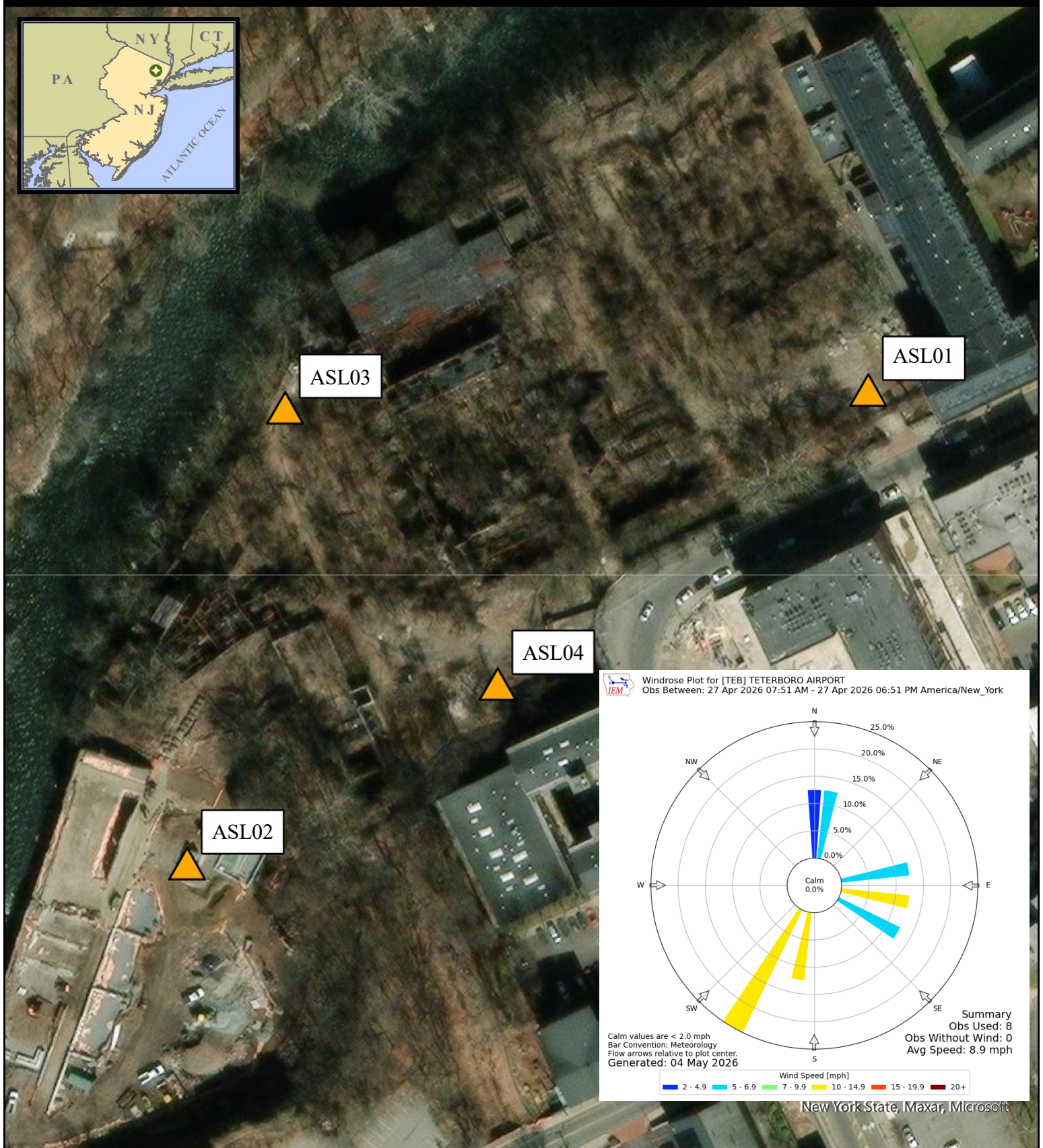
EPA - United State Environmental Protection Agency

µg/m<sup>3</sup> - Micrograms per meter cubed

PM<sub>10</sub> - Particulate Matter, diameter 10 micrometers and smaller

TWA- Time weighted average

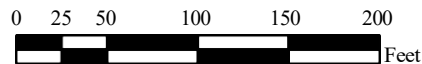
ASL -Air Station Location



New York State, Maxar, Microsoft

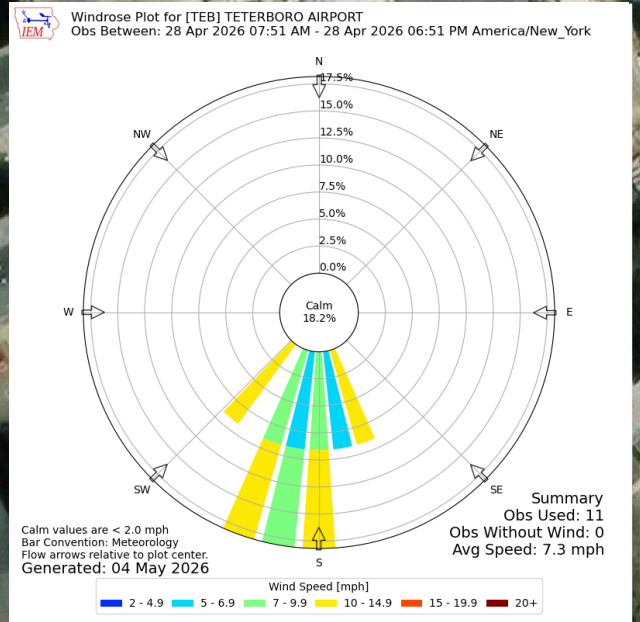
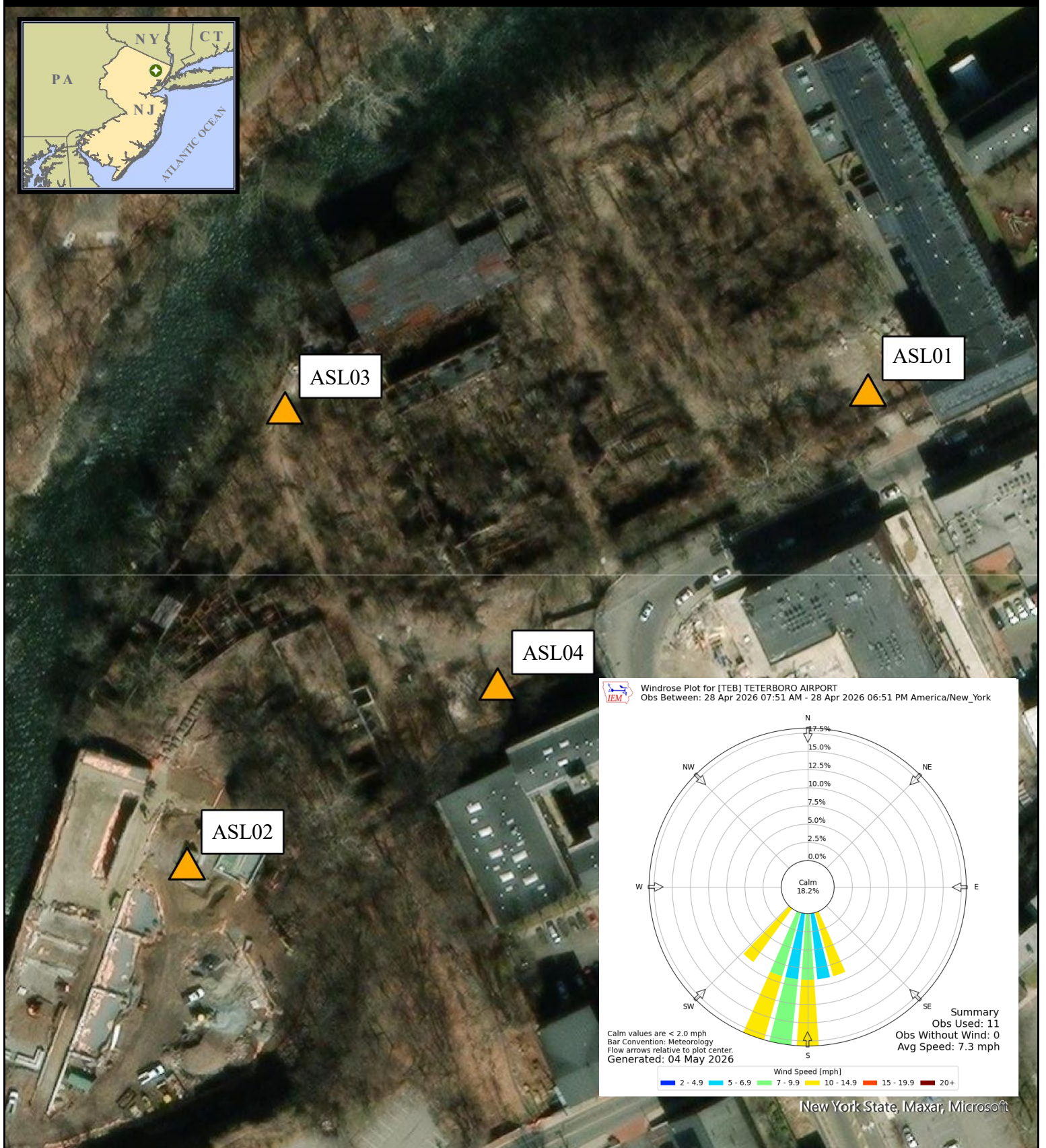
**Legend**  
 Air Monitoring Location

- Notes:
1. Air monitoring locations are approximate.
  2. ASL01 (North Gate), ASL02 (Overlook Park Lower Fence Gate), ASL03 (North River Fence), and ASL04 (Exterior Colt Gun Building/Decontamination Zone).
  3. Air stations consist of a DustTrak II with a particulate matter smaller than 10 microns in diameter (PM10) impactor and a GilAir Plus for air asbestos air sampling.



**Air Monitoring Location Map**

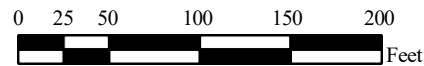
Allied Textile Printing Paterson, New Jersey	
U.S. ENVIRONMENTAL PROTECTION AGENCY SUPERFUND TECHNICAL ASSESSMENT & RESPONSE TEAM VI CONTRACT # 68HE0325D0001	
GIS ANALYST:	
EPA OSC:	C. Grell
START V SPME:	
CHARGE #:	
<b>Weston Solutions, Inc.</b> Federal East Division	



New York State, Maxar, Microsoft

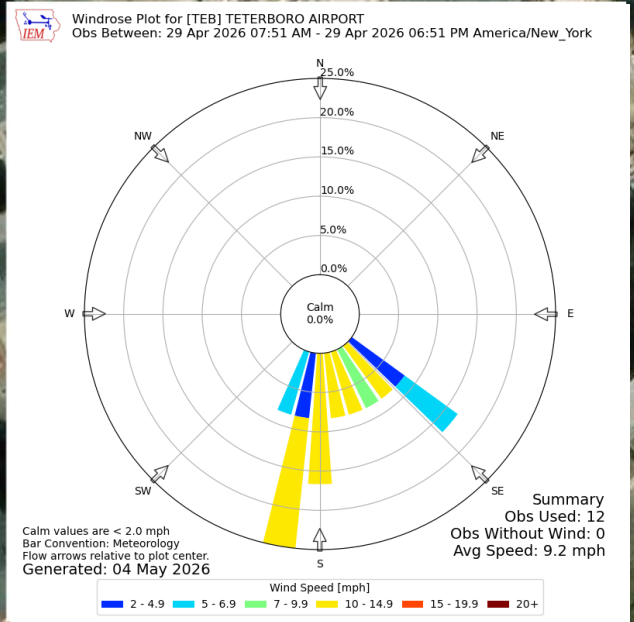
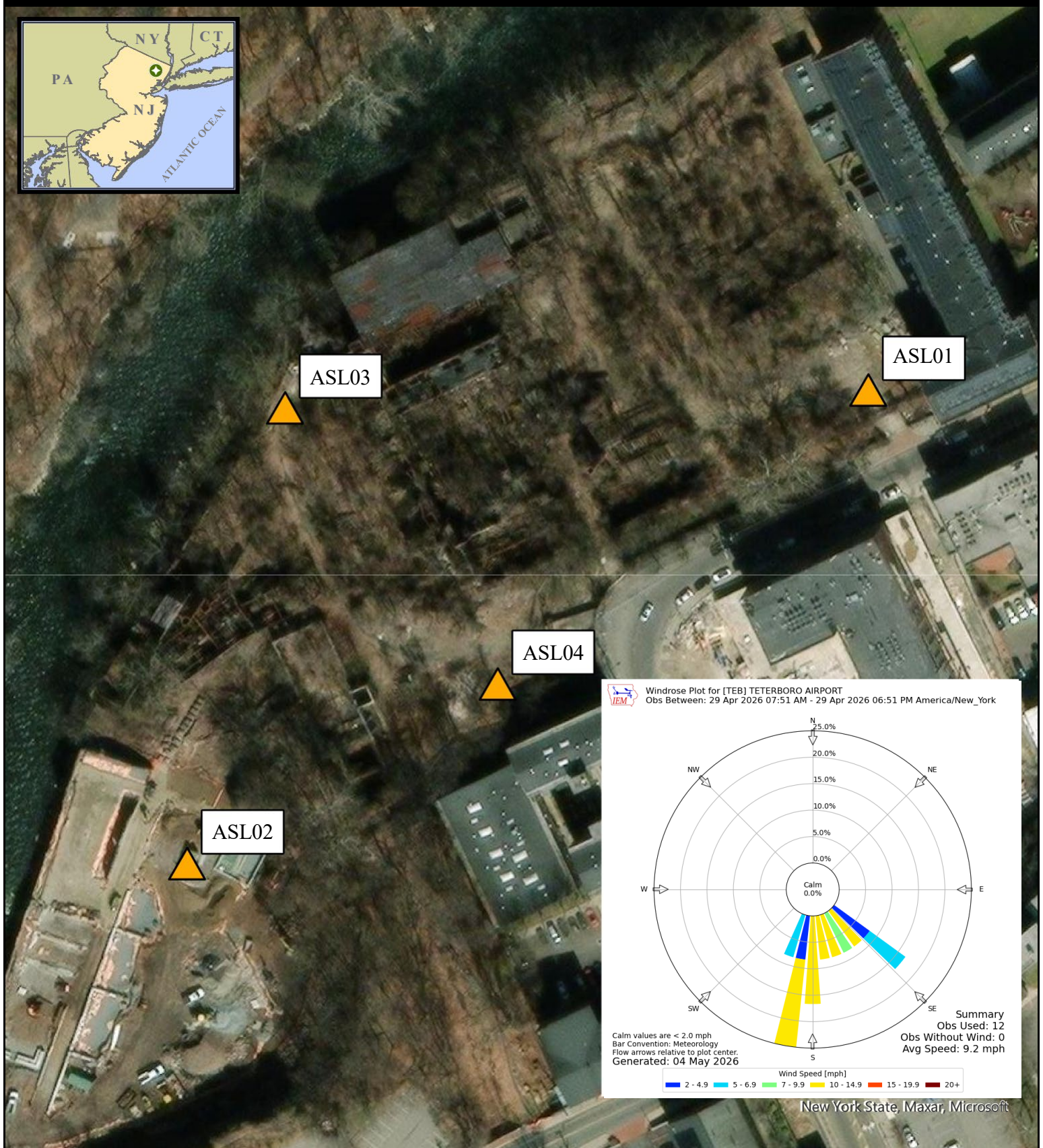
**Legend**  
 Air Monitoring Location

- Notes:
1. Air monitoring locations are approximate.
  2. ASL01 (North Gate), ASL02 (Overlook Park Lower Fence Gate), ASL03 (North River Fence), and ASL04 (Exterior Colt Gun Building/Decontamination Zone).
  3. Air stations consist of a DustTrak II with a particulate matter smaller than 10 microns in diameter (PM10) impactor and a GilAir Plus for air asbestos air sampling.



**Air Monitoring Location Map**

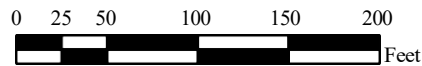
Allied Textile Printing Paterson, New Jersey	
U.S. ENVIRONMENTAL PROTECTION AGENCY SUPERFUND TECHNICAL ASSESSMENT & RESPONSE TEAM VI CONTRACT # 68HE0325D0001	
GIS ANALYST:	
EPA OSC:	C. Grell
START V SPME:	
CHARGE #:	
<b>WESTON SOLUTIONS</b> Weston Solutions, Inc. Federal East Division	



New York State, Maxar, Microsoft

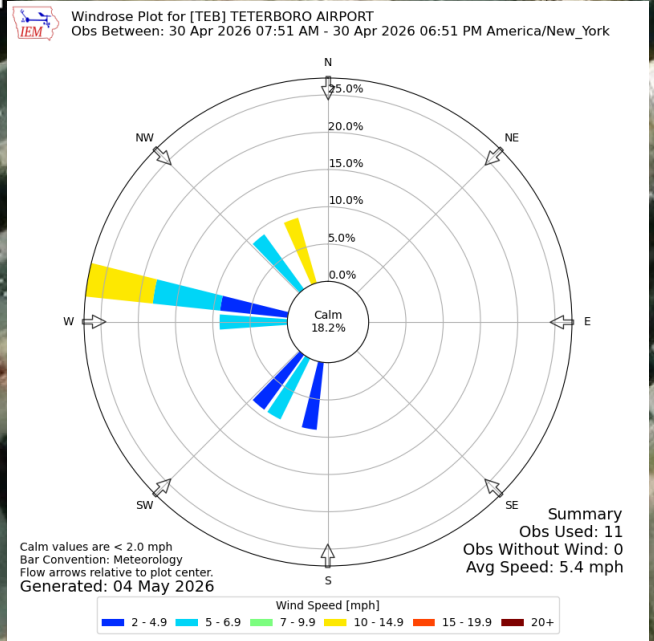
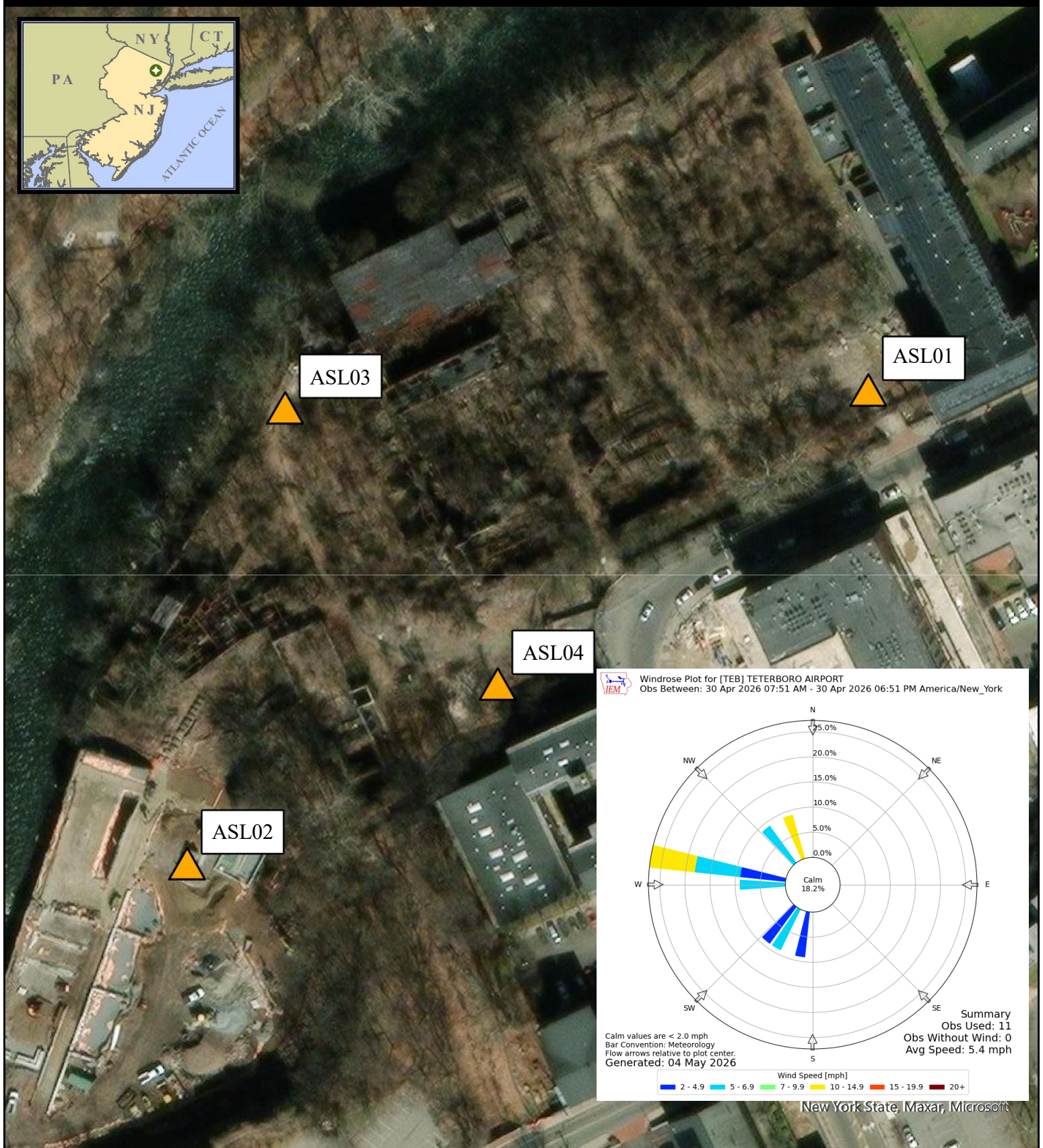
**Legend**  
 Air Monitoring Location

- Notes:
1. Air monitoring locations are approximate.
  2. ASL01 (North Gate), ASL02 (Overlook Park Lower Fence Gate), ASL03 (North River Fence), and ASL04 (Exterior Colt Gun Building/Decontamination Zone).
  3. Air stations consist of a DustTrak II with a particulate matter smaller than 10 microns in diameter (PM10) impactor and a GilAir Plus for air asbestos air sampling.



**Air Monitoring Location Map**

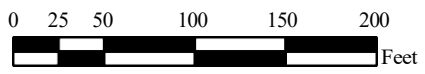
Allied Textile Printing Paterson, New Jersey	
U.S. ENVIRONMENTAL PROTECTION AGENCY SUPERFUND TECHNICAL ASSESSMENT & RESPONSE TEAM VI CONTRACT # 68HE0325D0001	
GIS ANALYST:	
EPA OSC:	C. Grell
START V SPME:	
CHARGE #:	
Weston Solutions, Inc. Federal East Division	



New York State, Maxar, Microsoft

**Legend**  
 Air Monitoring Location

- Notes:
1. Air monitoring locations are approximate.
  2. ASL01 (North Gate), ASL02 (Overlook Park Lower Fence Gate), ASL03 (North River Fence), and ASL04 (Exterior Colt Gun Building/Decontamination Zone).
  3. Air stations consist of a DustTrak II with a particulate matter smaller than 10 microns in diameter (PM10) impactor and a GilAir Plus for air asbestos air sampling.



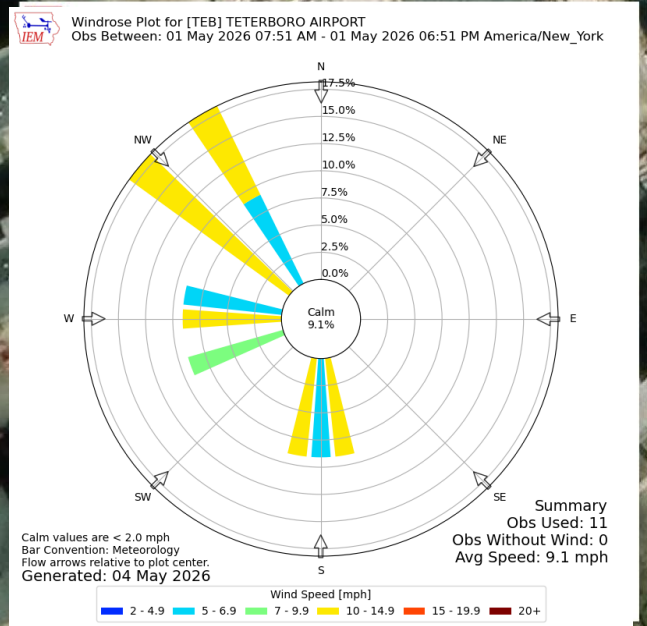
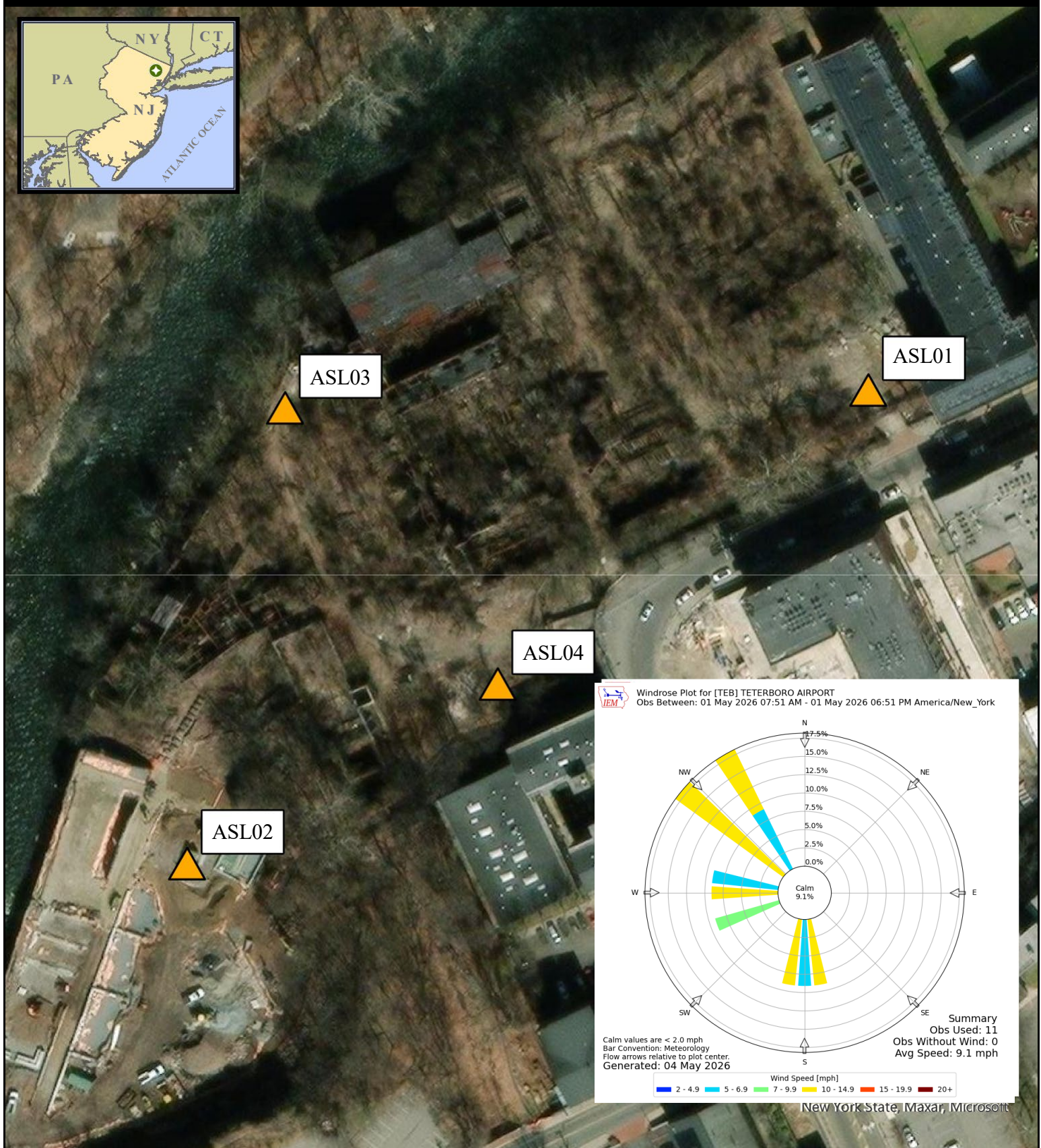
**Air Monitoring Location Map**

Allied Textile Printing  
 Paterson, New Jersey

U.S. ENVIRONMENTAL PROTECTION AGENCY  
 SUPERFUND TECHNICAL ASSESSMENT  
 & RESPONSE TEAM VI  
 CONTRACT # 68HE0325D0001

GIS ANALYST:	
EPA OSC:	C. Grell
STAR1 V SPME:	
CHARGE #:	

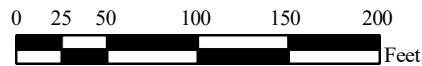
**WESTON SOLUTIONS** Westcon Solutions, Inc.  
 Federal East Division



New York State, Maxar, Microsoft

**Legend**  
 Air Monitoring Location

- Notes:
1. Air monitoring locations are approximate.
  2. ASL01 (North Gate), ASL02 (Overlook Park Lower Fence Gate), ASL03 (North River Fence), and ASL04 (Exterior Colt Gun Building/Decontamination Zone).
  3. Air stations consist of a DustTrak II with a particulate matter smaller than 10 microns in diameter (PM10) impactor and a GilAir Plus for air asbestos air sampling.



**Air Monitoring Location Map**

Allied Textile Printing  
 Paterson, New Jersey

U.S. ENVIRONMENTAL PROTECTION AGENCY  
 SUPERFUND TECHNICAL ASSESSMENT  
 & RESPONSE TEAM VI  
 CONTRACT # 68HE0325D0001

GIS ANALYST:	
EPA OSC:	C. Grell
START V SPME:	
CHARGE #:	

**WESTON SOLUTIONS** Weston Solutions, Inc. Federal East Division