

LEARN MORE AT: www.response.gov/blisscornerneighborhoodsiteIV



Bliss Corner Neighborhood Site Dartmouth, MA

SITE DESCRIPTION AND HISTORY

In July 2018, the Massachusetts Department of Environmental Protection (MassDEP) responded to an odor complaint at an unoccupied residential lot at 85 McCabe Street, Dartmouth, Massachusetts. MassDEP identified buried waste material on the property prompting soil sampling for metals and polychlorinated biphenyls (PCBs). In the ensuing months, MassDEP inspected and sampled additional unoccupied properties and Town of Dartmouth rights-of-way, through which MassDEP observed a fill layer consisting of coal ash, glass, brick, and coal clinkers. This layer came to be representative of contaminated properties throughout the neighborhood.

In September 2019, MassDEP began residential sampling in the Bliss Corner Neighborhood, and in October 2020, MassDEP requested EPA's support for further residential sampling. To date, EPA and MassDEP have sampled over 100 properties. In August 2021, MassDEP asked EPA for help in addressing residential properties that show the highest concentrations of lead and/or PCB contamination in surficial soil through removal action. To date, EPA has conducted 20 cleanups at properties within the neighborhood.



UPCOMING ACTIONS

EPA is starting work on six additional properties where average lead concentrations measured on the properties exceed the EPA Removal Management Level and the MassDEP Residential Standard. PCBs were also detected at four of these properties, one of which shows an average PCB concentration above MassDEP's Residential Standard. Through Removal Response IV, these six properties have been selected for removal actions and are expected to comprise the final removal actions in the Bliss Corner neighborhood conducted by EPA. Site work is expected to begin in late spring/early summer 2026 and continue into 2029.

Expect to see heavy machinery and workers in protective clothing at properties with active cleanups. Air monitoring and other engineering controls (soil wetting operations) will be in place during active work to monitor and mitigate dust. Working hours will be approximately Monday-Thursday from 7 am to 5 pm. EPA will coordinate closely with the six property owners regarding the details of work specific to their properties.

CONTACTS

CAYLA JIMENEZ

On-Scene Coordinator
U.S. EPA
857-208-3791
jimenez.cayla@epa.gov

AARON SHAHEEN

Community Involvement Coordinator
U.S. EPA
617-918-1071
shaheen.aaron@epa.gov

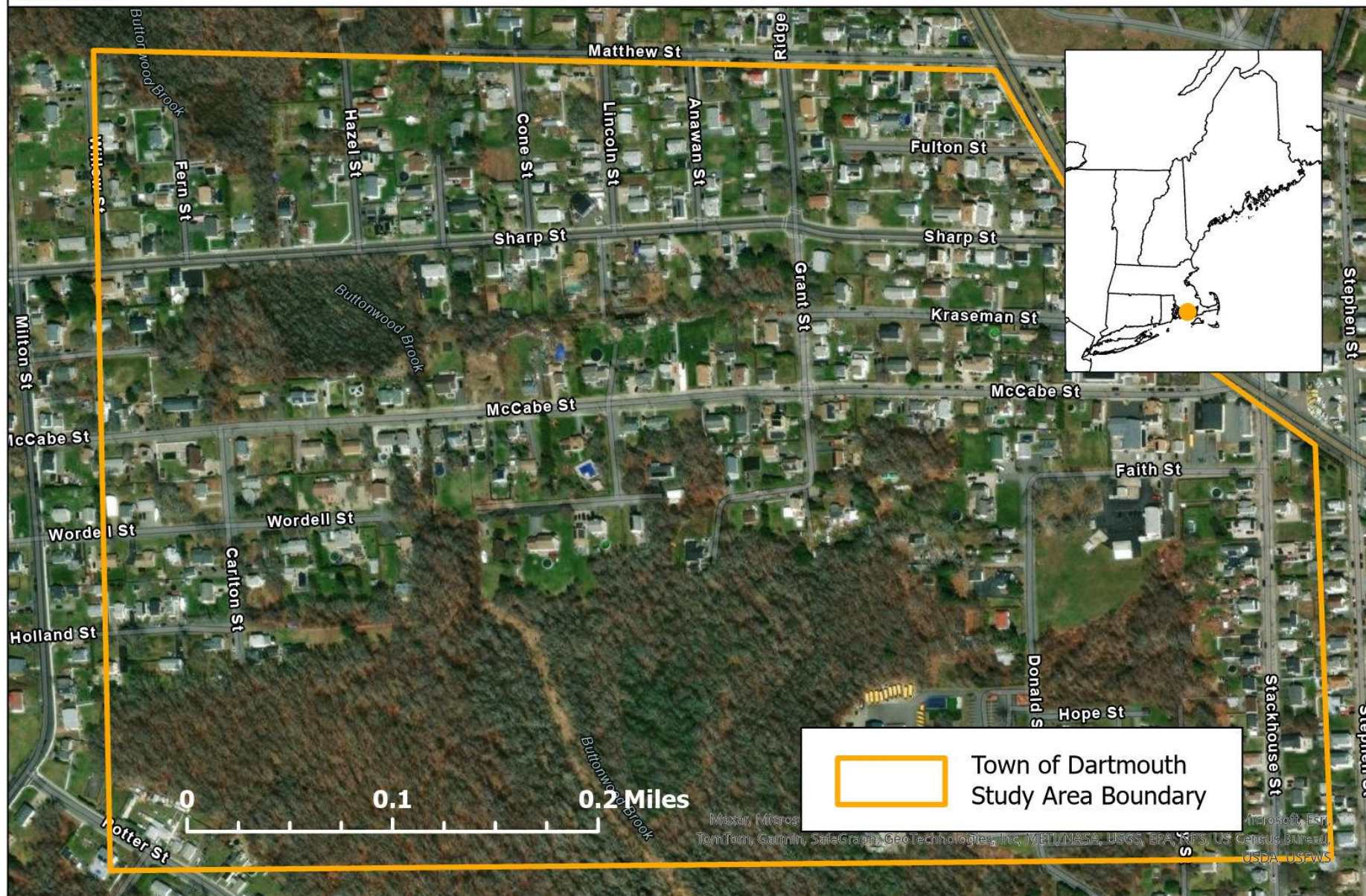
LORI WILLIAMSON

Bureau of Waste Site Cleanup
MassDEP
617-874-7164
lori.williamson@mass.gov



US EPA R1
 Superfund & Emergency Management Division
 Emergency Planning and Response Branch
 February 3, 2025

Bliss Corner Neighborhood Site



 Town of Dartmouth
Study Area Boundary