

Table 1: Weekly Perimeter Air Monitoring Summary
Allied Textile Printing Site
Paterson, Passaic County, New Jersey
May 11 2026 through May 15 2026

Date	Air Monitoring Instrument Number	Action Level Exceeded?¹	Work Day 15-Minute TWA Concentration Range (µg/m³)
May 11	ASL01	N	1.0 to 3.0
	ASL02	N	1.0 to 2.0
	ASL03	N	1.0 to 6.0
	ASL04	N	1.0 to 2.0
May 12	ASL01	N	1.0 to 3.0
	ASL02	N	1.0 to 9.0
	ASL03	N	1.0 to 4.0
	ASL04	N	1.0 to 2.0
May 13	ASL01	N	1.0 to 13.0
	ASL02	N	1.0 to 15.0
	ASL03	N	1.0 to 22.0
	ASL04	N	1.0 to 8.0
May 14	ASL01	N	1.0 to 7.0
	ASL02	N	1.0 to 9.0
	ASL03	N	1.0 to 11.0
	ASL04	N	1.0 to 5.0
May 15	ASL01	N	1.0 to 4.0
	ASL02	N	1.0 to 6.0
	ASL03	N	1.0 to 10.0
	ASL04	N	1.0 to 7.0

Notes:

The EPA uses air monitors to track small particles in the air called PM¹⁰, which are less than 10 micrometers in size. These particles can include dust, dirt, smoke, or asbestos fibers. The air monitors measure the average amount of PM¹⁰ in the air over 15 minutes. If the amount of PM¹⁰ is above 150 µg/m³, the monitors alert the EPA and workers on-site. If this happens, all site activities will stop, results are reported to the EPA, and dust control measures are re-evaluated. It's important to note that high levels of PM¹⁰ do not necessarily mean there is asbestos in the air. The monitors only measure the amount of particles, not what they are made of.

¹Action level utilized on-site is currently 150 µg/m³ with PM₁₀, which is compared to the average air monitoring measurement over a 15-minute period. If the action level is exceeded for a 15-minute period, on-site safety procedures are to suspend site activities, report results to the EPA On-Scene Coordinator and re-evaluate dust suppression measures.

Air monitoring is not performed during inclement weather conditions/rain and thunderstorms.

Abbreviations:

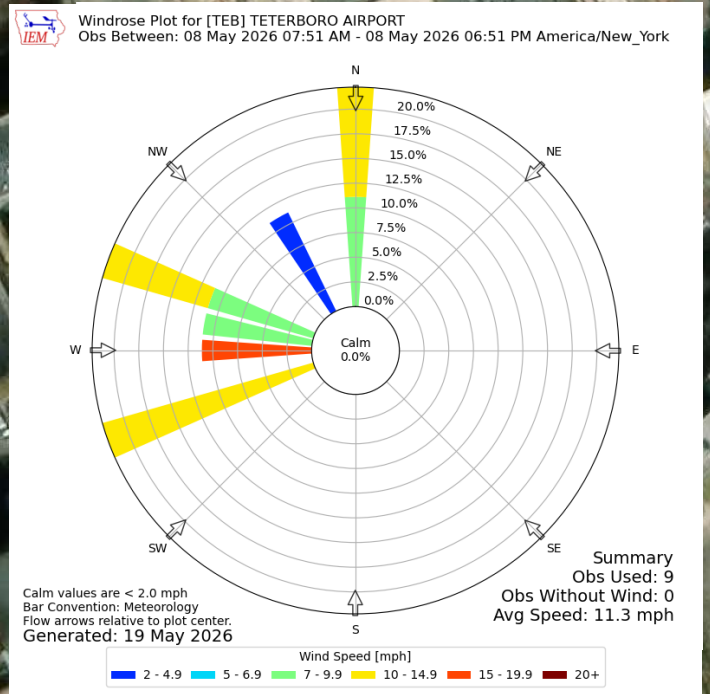
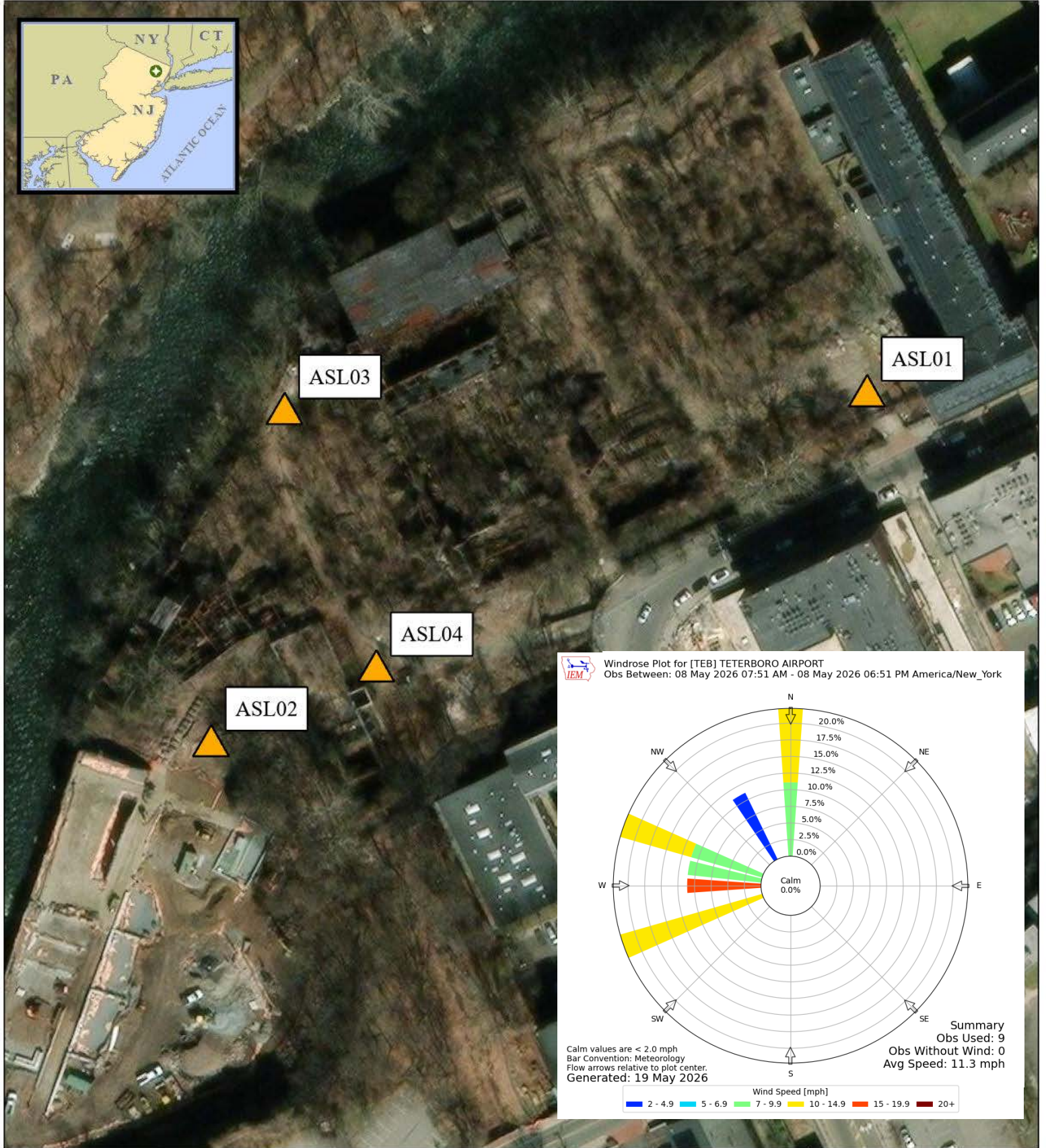
EPA - United State Environmental Protection Agency

µg/m³ - Micrograms per meter cubed

PM₁₀ - Particulate Matter, diameter 10 micrometers and smaller

TWA- Time weighted average

ASL -Air Station Location



Legend

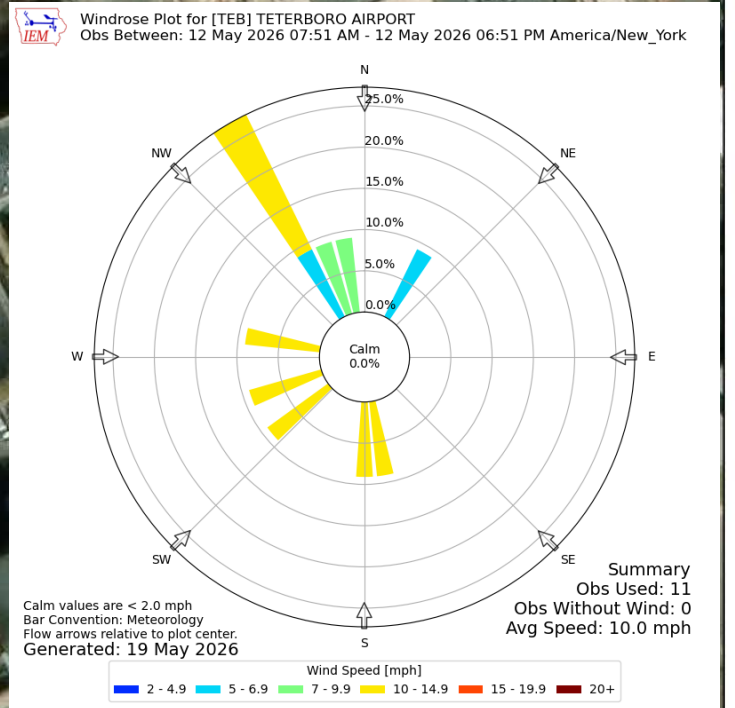
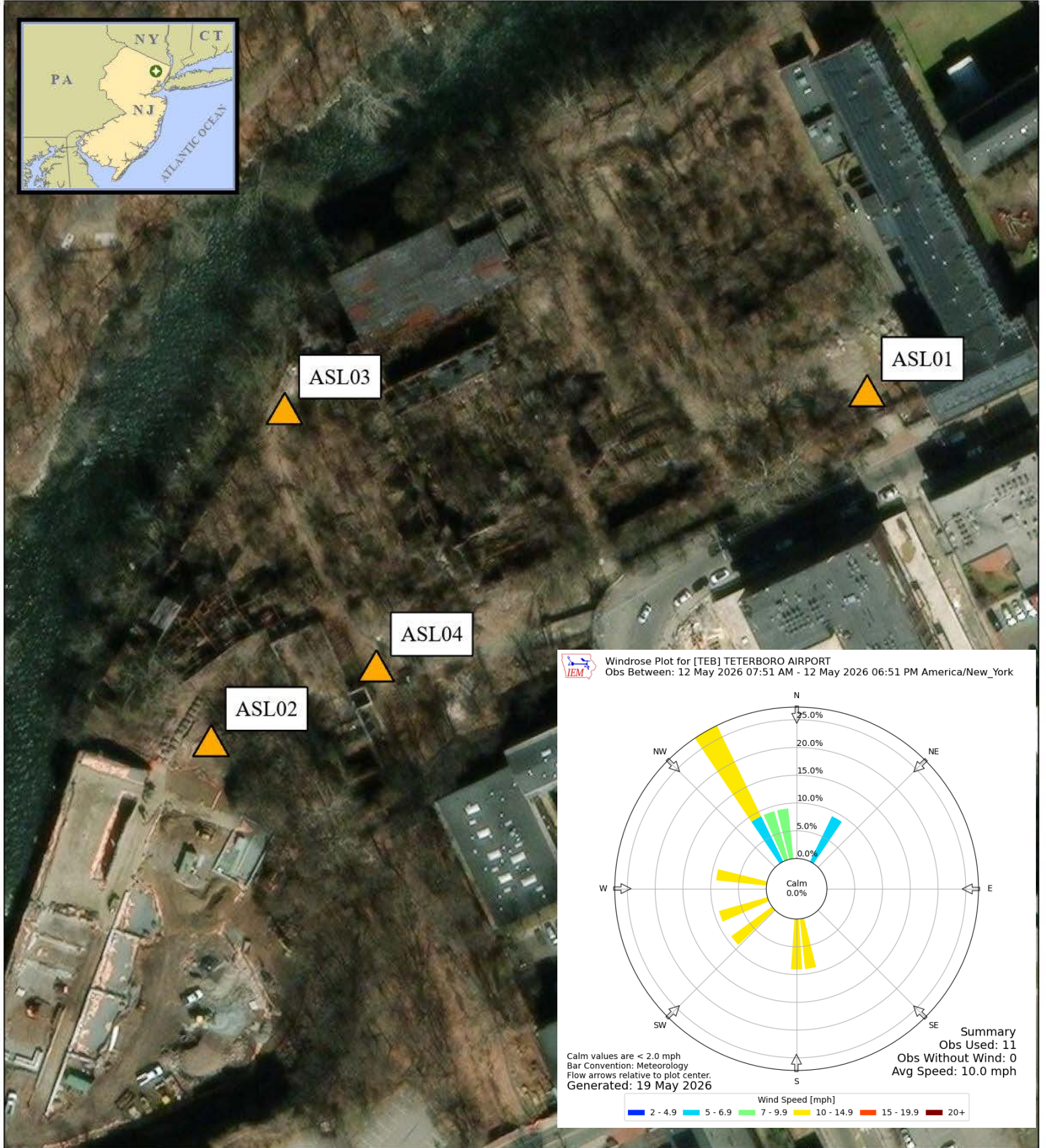
Air Monitoring Location

- Notes:
- Air monitoring locations are approximate.
 - ASL01 (North Gate), ASL02 (Overlook Park Lower Fence Gate), ASL03 (North River Fence), and ASL04 (Exterior Colt Gun Building).
 - Air stations consist of a DustTrak II with a particulate matter smaller than 10 microns in diameter (PM10) impactor and a GilAir Plus for air asbestos air sampling.



Air Monitoring Location Map

Allied Textile Printing Paterson, New Jersey	
U.S. ENVIRONMENTAL PROTECTION AGENCY SUPERFUND TECHNICAL ASSESSMENT & RESPONSE TEAM VI CONTRACT # 68HE032D0001	
GIS ANALYST:	A. PETROSH
EPA OSC:	C. GRELL
START V' SPM:	JT CARACAPPA
CHARGE #:	H0400 011 004 1035
	Weston Solutions, Inc. Federal East Division



Legend

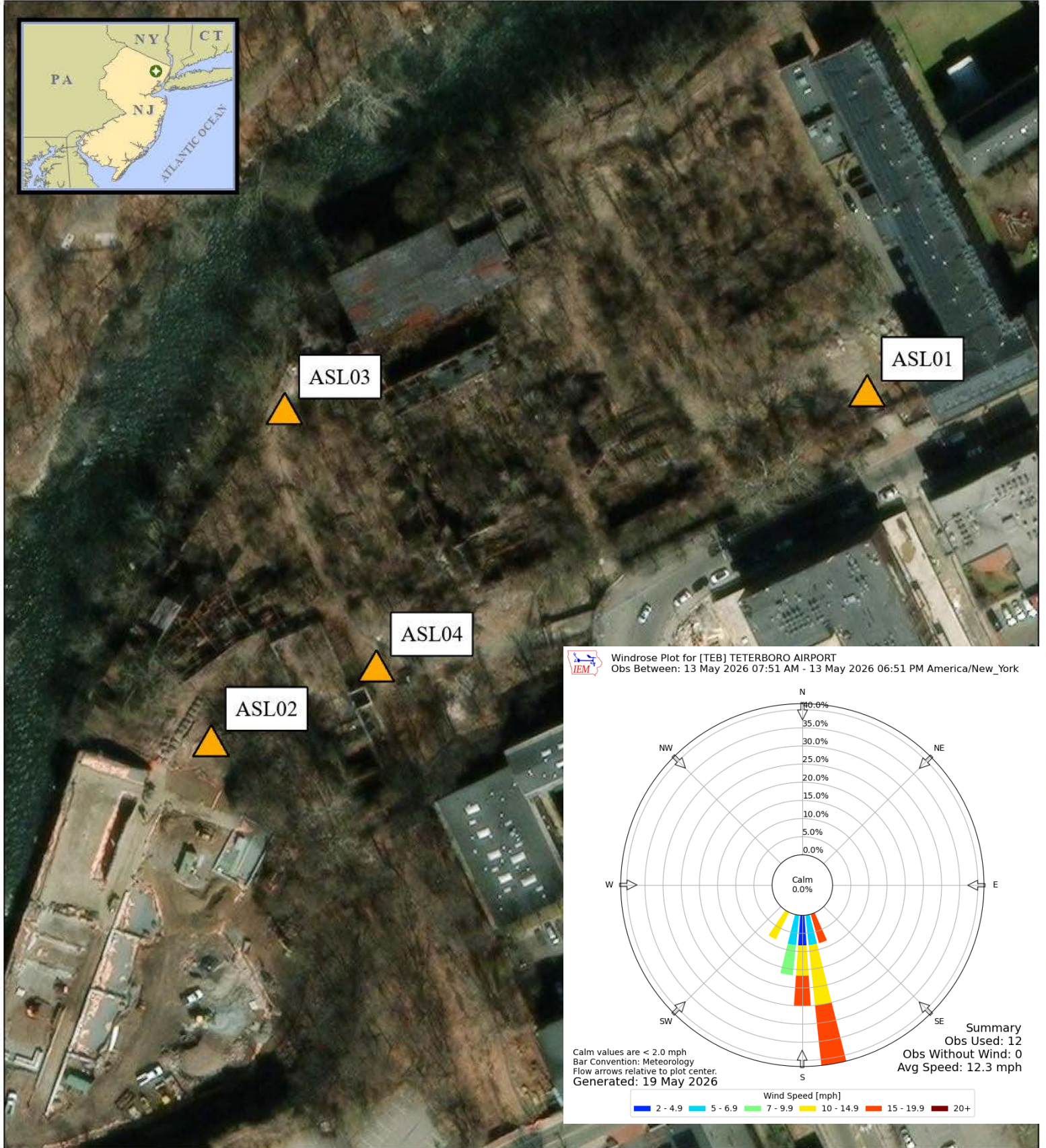
Air Monitoring Location

- Notes:
- Air monitoring locations are approximate.
 - ASL01 (North Gate), ASL02 (Overlook Park Lower Fence Gate), ASL03 (North River Fence), and ASL04 (Exterior Colt Gun Building).
 - Air stations consist of a DustTrak II with a particulate matter smaller than 10 microns in diameter (PM10) impactor and a GilAir Plus for air asbestos air sampling.

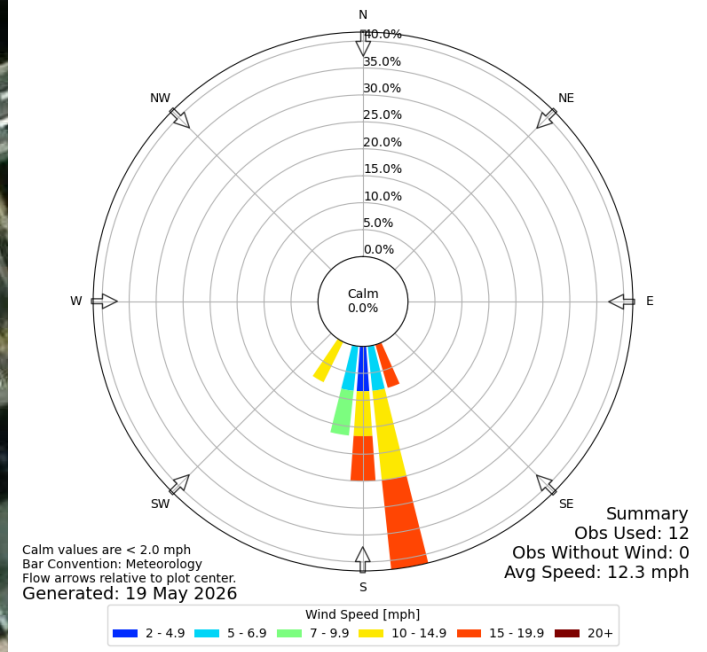


Air Monitoring Location Map

Allied Textile Printing Paterson, New Jersey	
U.S. ENVIRONMENTAL PROTECTION AGENCY SUPERFUND TECHNICAL ASSESSMENT & RESPONSE TEAM VI CONTRACT # 6SHE0325D0001	
GIS ANALYST:	A. PETROSH
EPA OSC:	C. GRELL
START V SPM:	T. CARACAPPA
CHARGE #:	H0400 011 004 1035
	Weston Solutions, Inc. Federal East Division



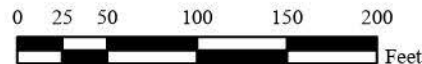
Windrose Plot for [TEB] TETERBORO AIRPORT
 Obs Between: 13 May 2026 07:51 AM - 13 May 2026 06:51 PM America/New_York



Legend

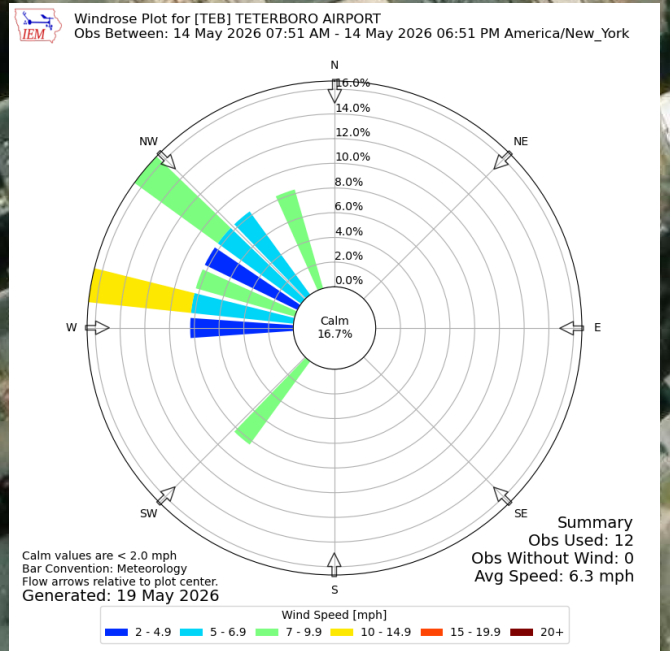
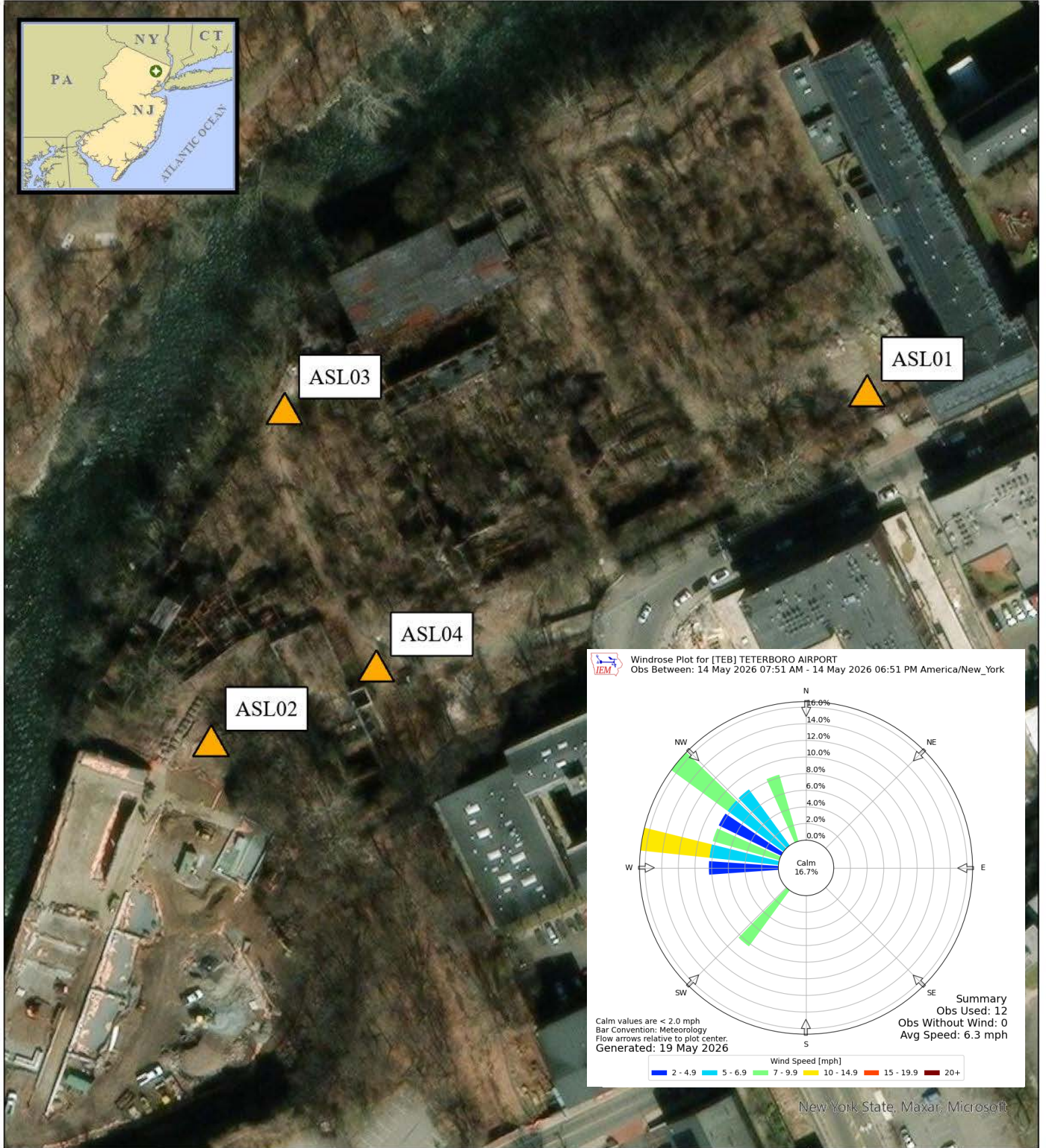
Air Monitoring Location

- Notes:
1. Air monitoring locations are approximate.
 2. ASL01 (North Gate), ASL02 (Overlook Park Lower Fence Gate), ASL03 (North River Fence), and ASL04 (Exterior Colt Gun Building).
 3. Air stations consist of a DustTrak II with a particulate matter smaller than 10 microns in diameter (PM10) impactor and a GilAir Plus for air asbestos air sampling.



Air Monitoring Location Map

Allied Textile Printing Paterson, New Jersey	
U.S. ENVIRONMENTAL PROTECTION AGENCY SUPERFUND TECHNICAL ASSESSMENT & RESPONSE TEAM VI CONTRACT # 68HE032D0001	
GIS ANALYST:	A. PETROSH
EPA OSC:	C. GRELL
START V' SPM:	T. CARACAPPA
CHARGE #:	H0400 011 004 1035
	Weston Solutions, Inc. Federal East Division



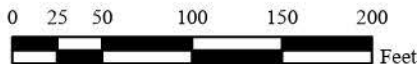
New York State, Maxar, Microsoft

Legend

Air Monitoring Location

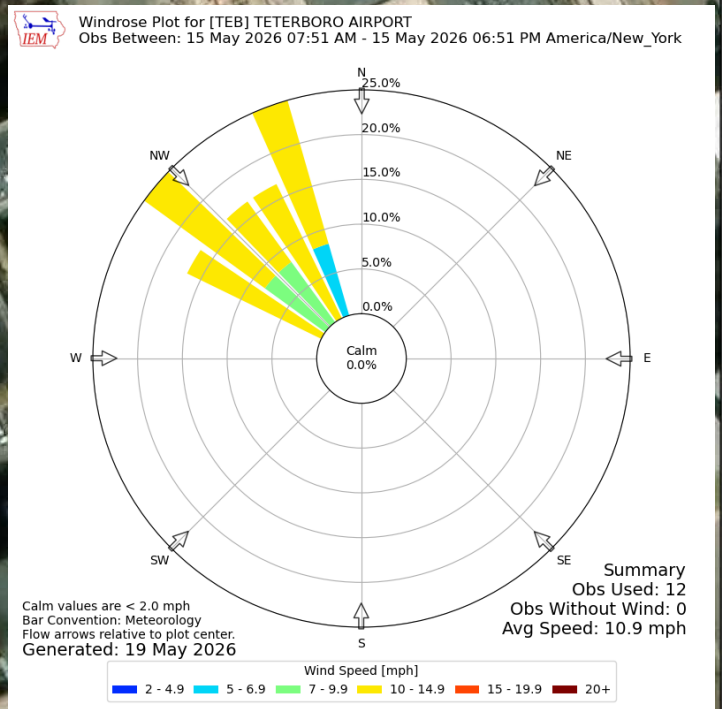
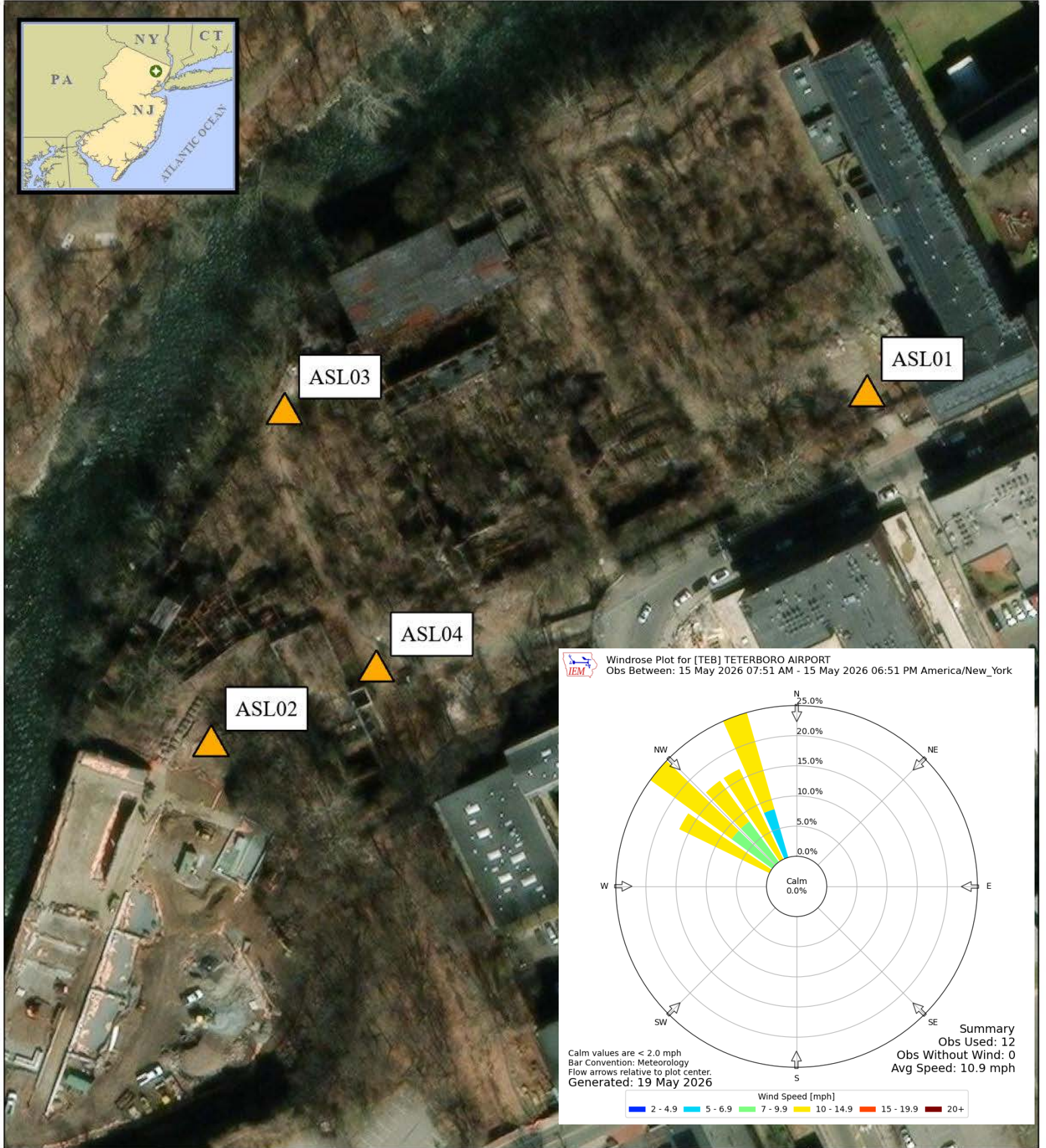
Notes:

- Air monitoring locations are approximate.
- ASL01 (North Gate),
ASL02 (Overlook Park Lower Fence Gate),
ASL03 (North River Fence),
and ASL04 (Exterior Colt Gun Building).
- Air stations consist of a DustTrak II with a particulate matter smaller than 10 microns in diameter (PM10) impactor and a GilAir Plus for air asbestos air sampling.



Air Monitoring Location Map

Allied Textile Printing Paterson, New Jersey	
U.S. ENVIRONMENTAL PROTECTION AGENCY SUPERFUND TECHNICAL ASSESSMENT & RESPONSE TEAM VI CONTRACT # 63HE032D0001	
GIS ANALYST:	A. PETROSH
EPA OSC:	C. GRELL
START V SPM:	J. CARACAPPA
CHARGE #:	H0400 011 004 1035
	Weston Solutions, Inc. Federal East Division

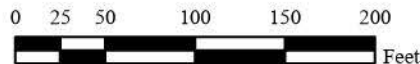


Legend

Air Monitoring Location

Notes:

- Air monitoring locations are approximate.
- ASL01 (North Gate),
ASL02 (Overlook Park Lower Fence Gate),
ASL03 (North River Fence),
and ASL04 (Exterior Colt Gun Building).
- Air stations consist of a DustTrak II with a particulate matter smaller than 10 microns in diameter (PM10) impactor and a GilAir Plus for air asbestos air sampling.



Air Monitoring Location Map

Allied Textile Printing Paterson, New Jersey	
U.S. ENVIRONMENTAL PROTECTION AGENCY SUPERFUND TECHNICAL ASSESSMENT & RESPONSE TEAM VI CONTRACT # 68HE032D0001	
GIS ANALYST:	A. PETROSH
EPA OSC:	C. GRELL
START V SPM:	T. CARACAPPA
CHARGE #:	H0400 011 004 1035
	Weston Solutions, Inc. Federal East Division