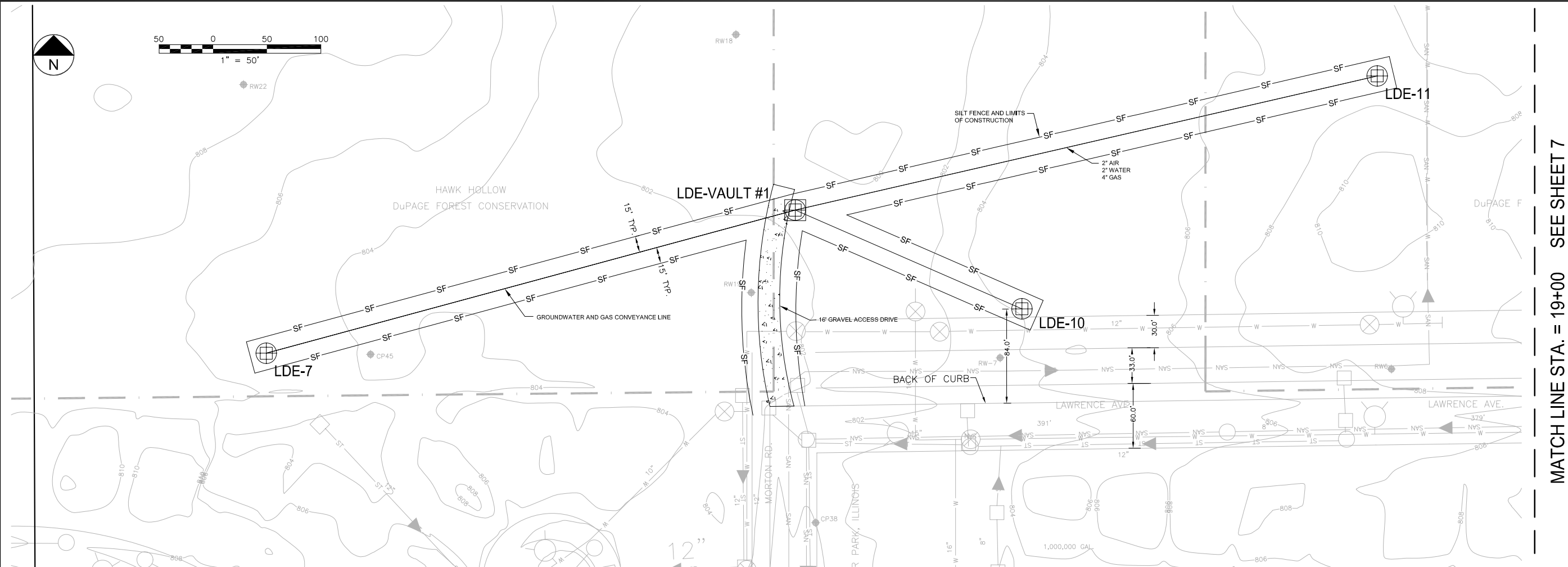


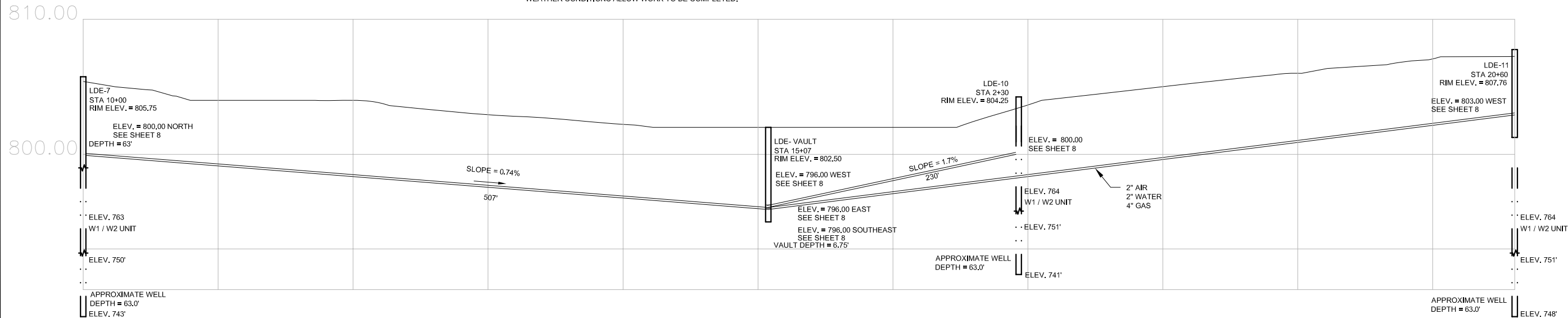
X:\PROJECTS\200704805\DWG\Corrective Action\Fig 5-2 & 5-3_11-24-08.dwg; 11/25/2008 11:14:21 AM; DUCKART, RYAN; STS.snb



MATCH LINE STA. = 19+00 SEE SHEET 7

- NOTES:**
1. "THE INFORMATION SHOWN ON THIS DRAWING CONCERNING TYPE AND LOCATION OF UNDER-GROUND UTILITIES IS NOT GUARANTEED TO BE ACCURATE OR ALL INCLUSIVE. THE CONTRACTOR IS RESPONSIBLE FOR MAKING HIS OWN DETERMINATIONS AS TO THE TYPE AND LOCATION OF UNDER-GROUND UTILITIES AS MAY BE NECESSARY TO AVOID DAMAGE THERETO."
 2. TOPOGRAPHY SHOWN ARE FROM DUPAGE COUNTY BASED ON AEROMETRIC SURVEYS AND MAY NOT REPRESENT ACTUAL FIELD ELEVATIONS. CONTRACTOR SHALL VERIFY GRADES BEFORE STARTING WORK.
 3. PROFILE DEPICTS PIPING GRADES AND CONNECTIONS REFER TO TABLE 4-2 FOR SUMMARY OF WELL CONSTRUCTION .
 4. REFER TO TABLE 4-2 FOR WELL CONSTRUCTION SUMMARY ACTUAL DEPTHS MUST BE DETERMINED IN THE FIELD BASED ON THE ENCOUNTERED GEOLOGIC CONDITIONS.
 5. SURFACE CONDITIONS TO BE RESTORED TO ORIGINAL GRADE AND RESEEDDED USING SEED MIXTURE SPECIFIED BY DUPAGE COUNTY FOREST PRESERVE DISTRICT. RESTORATION WILL OCCUR WHEN WEATHER CONDITIONS ALLOW WORK TO BE COMPLETED.

RELEASED FOR REGULATORY REVIEW



STS | AECOM

1035 Kepler Dr.
Green Bay, WI 54311

920-468-1978

www.stsconsultants.com

Copyright 2008 ©
By: STS Consultants, Ltd.

MALLARD LAKE LANDFILL
OFF SITE GAS COLLECTION SYSTEM UPDATE - EXAMPLE
DuPAGE COUNTY
HANOVER PARK, ILLINOIS
HAWK HOLLOW GAS EXTRACTION PLAN AND PROFILE

Issued

Rev	Date	Description

Designed:
Drawn: RLD 11/24/2008
Checked: KJC 11/24/2008
Approved: MGR 11/24/2008

PROJECT NUMBER
200704805
SHEET REFERENCE NUMBER

5-2