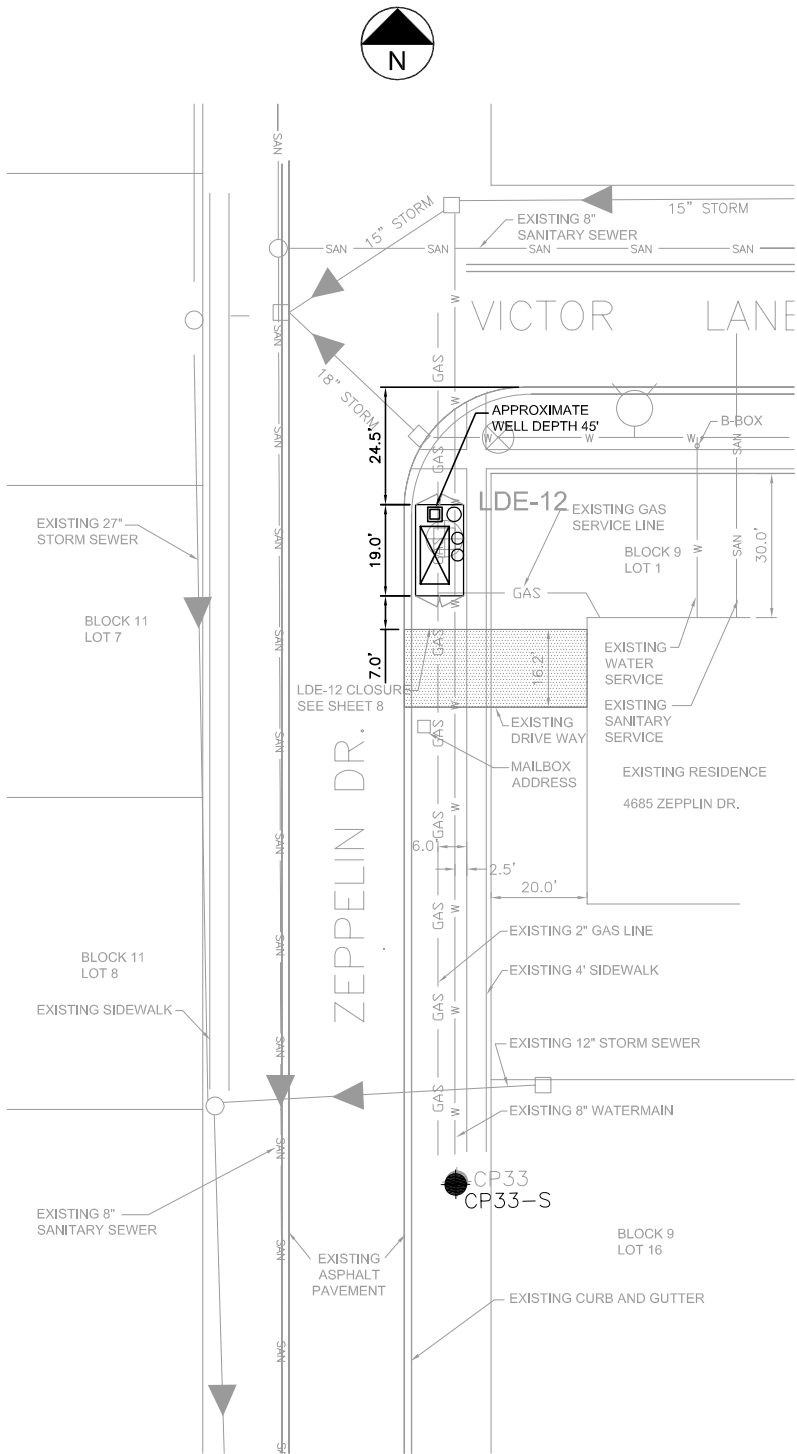
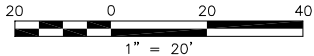
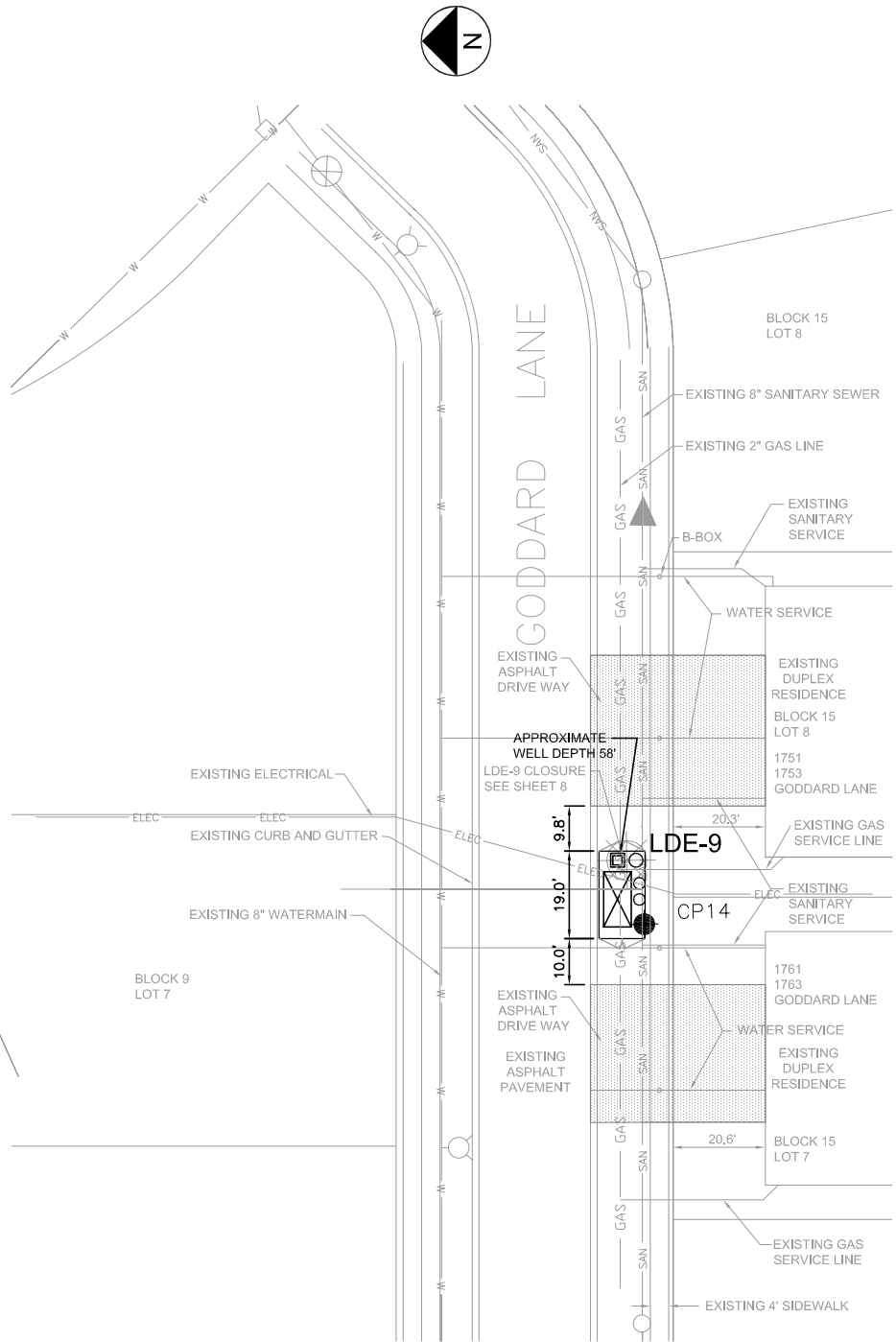
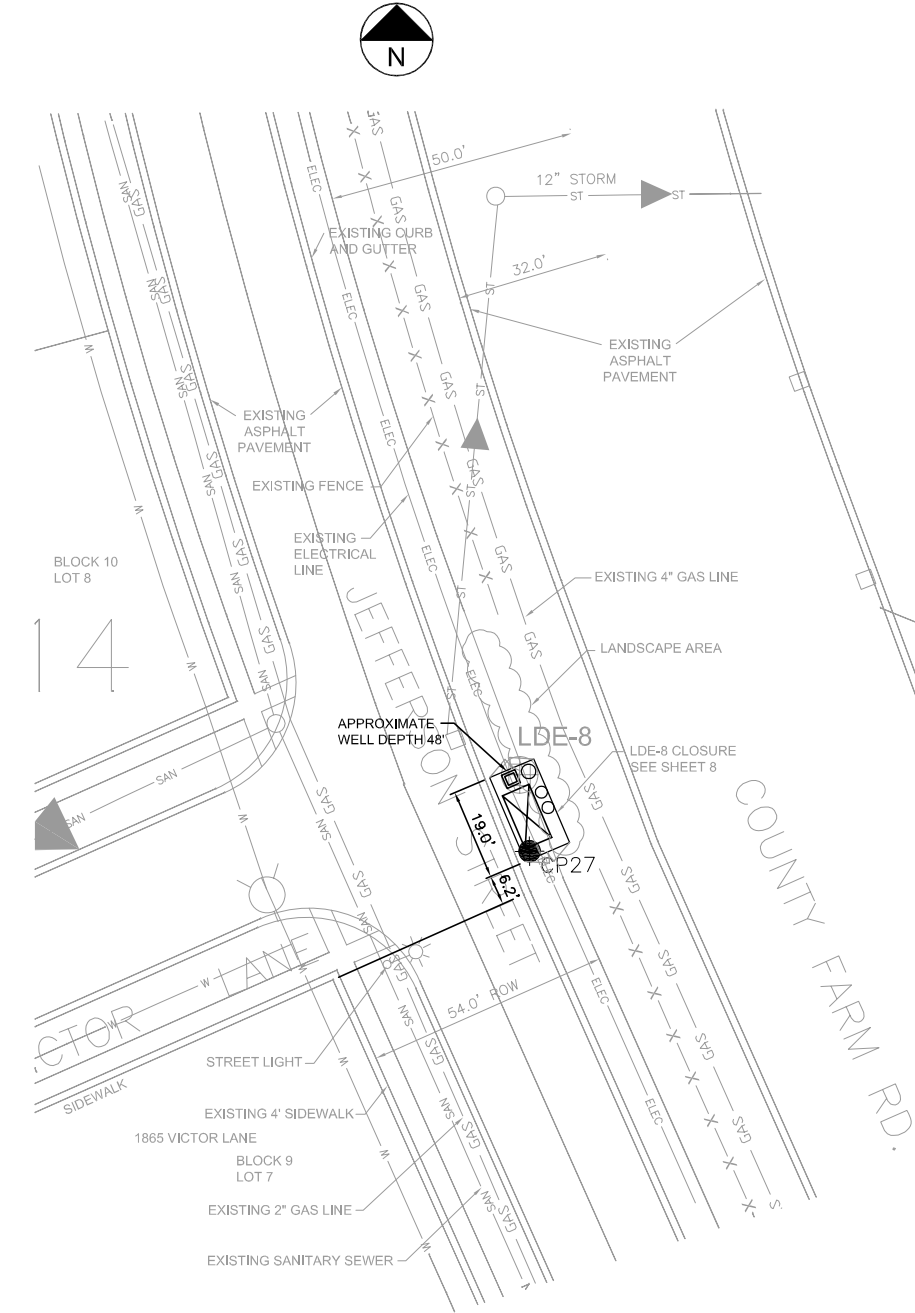


X:\PROJECTS\200704805\DWG\Corrective Action\Fig 5-4\_11-24-08.dwg: 11/25/2008 11:26:36 AM: DUCKART, RYAN: STS.snb



- NOTES:
1. REFER TO TABLE 4-2 FOR SUMMARY OF WELL CONSTRUCTION, WELL TO BE 6"Ø INSTALLED WITHIN 12"Ø BOREHOLE
  2. REFER TO FIGURES SHEET 8 FOR WELL CONSTRUCTION AND AND CONNECTION DETAILS
  3. LOCATION OF UTILITIES PROVIDED BY HANOVER PARK, WELL LOCATIONS ARE STAKED IN THE FIELD AND UTILITIES HAVE BEEN MARKED.
  4. PROPOSED WELL LOCATIONS WILL BE VACUUM EXTRACTED TO A DEPTH OF 8' IN AREAS OF WHERE UTILITIES ARE IN CLOSE PROXIMITY (±4') OF THE STAKED WELL LOCATION.
  5. LOCATION OF WATER SERVICE LINE AND SANITARY SEWER SERVICE LINE PER VILLAGE OF HANOVER RECORDS.
  6. ALL DISTURBED AREAS WITHIN PARKWAY SHALL BE RESODDED AND ANY LANDSCAPE PLANTS/MATERIALS SHALL BE REPLACED WITH LIKE CONDITIONS.
  7. ALL SIDEWALK, DRIVEWAY OR CURB DAMAGED DURING OPERATION SHALL BE REPLACED.
  8. PARKWAY AREA ADJACENT TO LDE-8 SHALL BE REGRADED TO ALLOW FOR A FLAT AREA TO SERVICE SITE, SITE SHALL BE RESTORED TO ORIGINAL CONDITION UPON COMPLETEION OF OPERATION.
- NO PARKING SIGNS SHALL BE PLACED 10 FEET SIDE OF ENCLOSURE TO PROHIBIT STREET PARKING NEED ENCLOSURE.



MALLARD LAKE LANDFILL  
OFF SITE GAS COLLECTION SYSTEM UPDATE - EXAMPLE  
DuPAGE COUNTY  
HANOVER PARK, ILLINOIS  
RESIDENTIAL AREA GAS EXTRACTION PLAN

Issued	
Rev	Date Description

Designed:  
Drawn: RLD 11/24/2008  
Checked: KJC 11/24/2008  
Approved: MGR 11/24/2008

PROJECT NUMBER  
200704805

SHEET REFERENCE NUMBER