

Jewett White Lead
2000 Richmond Terrace
Port Richmond
Staten Island, New York

Jewett White Lead

- History of EPA's involvement
- EPA investigation of Jewett White Lead
- Actions taken

Jewett White Lead

- **June 3, 2008** – EPA received request from then Councilman, now Congressman Michael McMahon to review the property located at 2000 Richmond Terrace
- Congressman McMahon was notified of the potential hazards posed at the Jewett White Lead site by the North Shore Waterfront Conservancy (NSWC)

Jewett White Lead

- NSWC received an environmental justice grant from NY State Dept of Environmental Conservation (NYSDEC) to identify manufacturing sites along the North Shore that have negative environmental impacts on the community
- NSWC found that 2000 Richmond Terrace was owned by Jewett White Lead, a lead manufacturing facility from 1839 to 1920s

Jewett White Lead

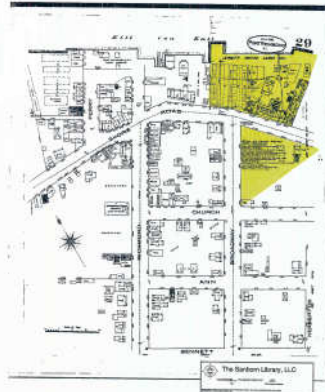
- Manufactured white lead
 - Originally made by filling lead jars and pots with vinegar (an acid) and applying a heat source
 - The lead crumbled into a white powder
- Uses for white lead
 - one of the oldest paint pigments used
 - also used in making putty and the manufacture of certain pottery

Jewett White Lead

- NSWC also discovered: June 8, 1981 - NL Industries voluntarily reported the operation of a white lead facility located at Shore Road in Staten island to EPA
 - Reporting was performed to fulfill new reporting requirement under Federal Superfund law
- EPA investigated the notification, but was unable to find the site.

1885 Sanborn Map

Jewett owned property at 2000 Richmond Terrace but did not appear to have operations here at this date



Historic 1898 map overlaid current map



Jewett White Lead

- **July 2008** – EPA performed a site visit
- Site was being used to store construction equipment and road millings from a local sewer project

Jewett White Lead

- **October 2008** – current property owner hired a contractor to collect soil samples from 2000 Richmond Terrace
- Sampling results indicate high levels of lead in surface soils and at depth

Jewett White Lead

- **December 17 – 18** – EPA collected soil samples from 16 test pits
- Off-site samples collected from four locations along sidewalk and gutter line of Richmond Terrace to determine if lead-contaminated soils had moved from the Site

December 2008 Sampling Event



Jewett White Lead

- **Late Feb 2009** – EPA received validated analytical results from soil sampling
- High levels of lead found in the soils both at the surface and at depth

Jewett White Lead

- **Average** concentration at surface = **5,081 ppm**
(Roughly 0.4% lead)
- Highest surface sample = **37,100 ppm**
(Roughly 3.7% lead)
- Higher concentrations found at depth =
28,245 ppm (at 2') to **53,398 ppm** (at 3')
- Highest concentration found at 2' depth =
240,000 ppm
(Roughly 24% lead)

Jewett White Lead

- What is a **PPM**?
 - PPM stands for **P**arts **P**er **M**illion
 - It is a scientific measurement of the amount of a pollutant or contaminant in a sample
 - Just as per cent means out of a hundred parts per million or ppm means out of a million
- One PPM is like:
 - One inch in 16 miles
 - One second in 11.5 days
 - One minute in two years

Jewett White Lead

- **Average** concentration at surface = **5,081 ppm**
(Roughly 0.4% lead)
- Highest surface sample = **37,100 ppm**
(Roughly 3.7% lead)
- Higher concentrations found at depth =
28,245 ppm (at 2') to **53,398 ppm** (at 3')
- Highest concentration found at 2' depth =
240,000 ppm
(Roughly 24% lead)

Jewett White Lead

- **Average** concentration at surface = **5,081 ppm**
- For industrial sites, New York State Soil Cleanup Objectives are 3,900 ppm
- Average concentration at Jewett Site are **1 ½** times higher than those allowed by New York State

Jewett White Lead

- High levels of lead also found in off-site samples collected along sidewalk
- Concentrations ranged from **383 ppm to 2,760 ppm**
- Twice the level allowed on residential properties (1200 ppm)

Jewett White Lead

- New York State Dept of Health (NYSDOH) reviewed EPA sampling data under Cooperative Agreement with ATSDR
- March 25, 2009 EPA received NYSDOH letter of technical assistance for the site
 - Lead in surface soil and road dust are a significant public health concern
 - Recommend collecting additional samples to determine extent of contamination and the potential for exposure

Jewett White Lead Interim Cleanup

- Based upon NYSDOH's recommendations EPA determined that an interim cleanup was required to prevent soils from leaving the property
- At request of EPA, property owner took an action on April 6, 2009 to stop the off-site movement of soils and sediment due to runoff

Installed silt fence and hay bales



Remove lead-contaminated soils and sediments from sidewalks and curb line



Spread grass seed and mulch on property to hold soils in place



Grass growing on property



Posted Signs on Fencing



Jewett White Lead

- Air monitoring done during all on-site and off-site activities
- Monitored for lead dust in air

Personnel monitoring pumps worn by on-site workers



Off-site air monitor



Jewett White Lead

- The results of air sampling showed low levels of lead
 - Less than worker safety standards
 - Less than national air quality standards at fenceline

Next Steps

- With upkeep of the grass and silt fencing, the temporary measures in place at the Site are protective of human health and the environment until a cleanup action is taken
- EPA is evaluating options for cleanup of the Site

For additional information and updates on EPA activities at the Jewett White Lead Site contact:

Wanda Ayala
Community Involvement Coordinator, US EPA
(212) 637-3676

Kimberly Staiger
On-Scene Coordinator, US EPA
(732) 452-6415

Or visit:

www.epaosc.net/jewettwhitelead