

Jewett White Lead
2000 Richmond Terrace
Port Richmond, Staten Island
Off-site Sampling Plan

Jewett White Lead Off-Site Sampling Plan



- Objective:
- To see if lead has moved from the Site into the surrounding community
- To see if more actions are needed to protect the public's health

Jewett White Lead Off-Site Sampling Plan

- How may lead spread from Jewett White Lead site into the community?
 - Through particulate emissions from past operations of the lead manufacturing plant
 - During fires in the early 1900s at the Jewett White Lead factory
 - Possible tracking of contaminated soil off-site during operations at the site
 - Any past disturbances of the soils on site

Jewett White Lead Off-Site Sampling Plan

Complicating factors:

- Other potential sources of lead –
 - Other industries that used lead
 - Elevated steel structures
 - Older homes with lead paint
 - Historic leaded gasoline emissions
- High background levels of lead in urban areas

Jewett White Lead Off-Site Sampling Plan

■ Off-site characterization:

- Residential backyard sampling
- Curbs and curb line sampling
- Elevated rail line sampling
- Background lead levels

Residential property sampling

- Residential yards included in the sampling will be those right next to the Site
- Samples will be collected randomly so that conclusions can be drawn about this entire block
- These samples will be used to tell us if lead from the site has moved onto the neighboring properties
- Additional samples will be collected in children's play areas and gardens



Residential property sampling

- EPA will be using an XRF to see if lead-based paint is present on homes
- It is a portable x-ray machine that can see through a surface and tell if lead paint is underneath
- If lead paint is present, soil samples will be collected from drip line



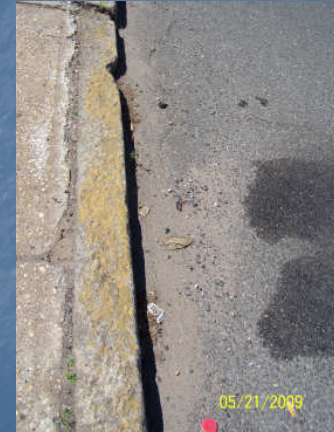
Curbs and curb line sampling



- Soil samples will be collected from sidewalk grassy patches in area bound by Port Richmond, Bennett, Heberton, and Richmond Terrace
- These samples will be used to determine if lead from Jewett has moved into the community

Curbs and curb line sampling

- Curb line samples will be collected from areas where road grit and dust collects



Elevated rail line at Church St and Park Ave

- Samples will be collected beneath the rail line directly south of the site
- Soil samples will be collected near the Site fence line
- These samples will provide information on movement of soils from site onto Railroad property



Train Trestle Sampling



- Collect samples of road grit/dust from street curbs next to and under train trestle at Church and Park
- Will use these samples to determine if the elevated rail line is a potential source of lead

Train Trestle Sampling

- Soil samples will be collected beneath the rail line at Maple and Sharpe
- Collect samples of road grit/dust from the curbs next to and beneath elevated train at Maple and Sharpe



Background sampling

- Soil samples will be collected along the curb line and grassy sidewalk areas in a comparable neighborhood
- This will provide information on the background levels of lead in the area
- What the concentrations of lead would be if Jewett White Lead never existed

Background sampling

- Road grit samples will be collected along Richmond Terrace from Port Richmond Avenue to Larkin Street
- This will provide information on other sources of lead contamination in the surrounding area along Richmond Terrace



Jewett White Lead Off-Site Sampling

- EPA will sample the backyards of the residential properties immediately adjacent to the site
- These homes, based on how close they are located to the Site, are the ones most likely to be impacted by releases from Jewett White Lead

Jewett White Lead Off-Site Sampling

- Sampling results collected from the residential properties will be provided to the property owners
- Sampling results are expected to be available by the end of August
- Results of this sampling will be made available to the public without identifying individual properties

NEXT STEPS

- Additional soil samples may be necessary to evaluate individual properties
- Additional sampling may be necessary at additional properties further from the Site

Jewett White Lead Off-Site

For information and updates on EPA activities related to the
Jewett White Lead Site contact:

Wanda Ayala
Community Involvement Coordinator, USEPA
(212) 637-3676

Kimberly Staiger
On-Scene Coordinator, USEPA
(732) 452-6415

Or visit:

www.epaosc.net/jewettwhitelead