

Analytical Results Summary
Perryville, IL
June 21, 2009

Two surface water samples (Rock River 1 and Rock River 2) were collected from Rock River on June 21, 2009 and analyzed for Total Petroleum Hydrocarbons – Gasoline Range Organics (TPH-GRO), benzene, ethylbenzene, toluene, xylene, m&p-xylene, and o-xylene. Rock River 1 is located approximately 3 miles south of the Interstate 88 bridge. Rock River 2 is located approximately 2 miles south of the Interstate 88 bridge. The surface water sample locations are presented in the attached figure. The surface water samples were collected from the top 2 inches of the water column. TPH-GRO was analyzed by USEPA Method 5030/8015 Modified. Benzene, ethylbenzene, toluene, xylene, m&p-xylene, and o-xylene were analyzed by USEPA Method 8260.

Analytical results were compared to Illinois Environmental Protection Agency (Illinois EPA) Tier 1 Groundwater Remediation Objectives for the Groundwater Component of the Groundwater Ingestion Route for all chemicals except TPH-GRO. Illinois EPA does not have a groundwater value for TPH-GRO, therefore the value developed by the Louisiana Department of Environmental Quality (LDEQ) for Class I groundwater was used. All chemicals analyzed were non-detect and are well below their applicable screening level.

Analytical results were also compared to Region 5 Ecological Screening Levels (ESLs) to assess any potential impact to the ecosystem. All chemicals analyzed were non-detect and are well below their applicable screening level.

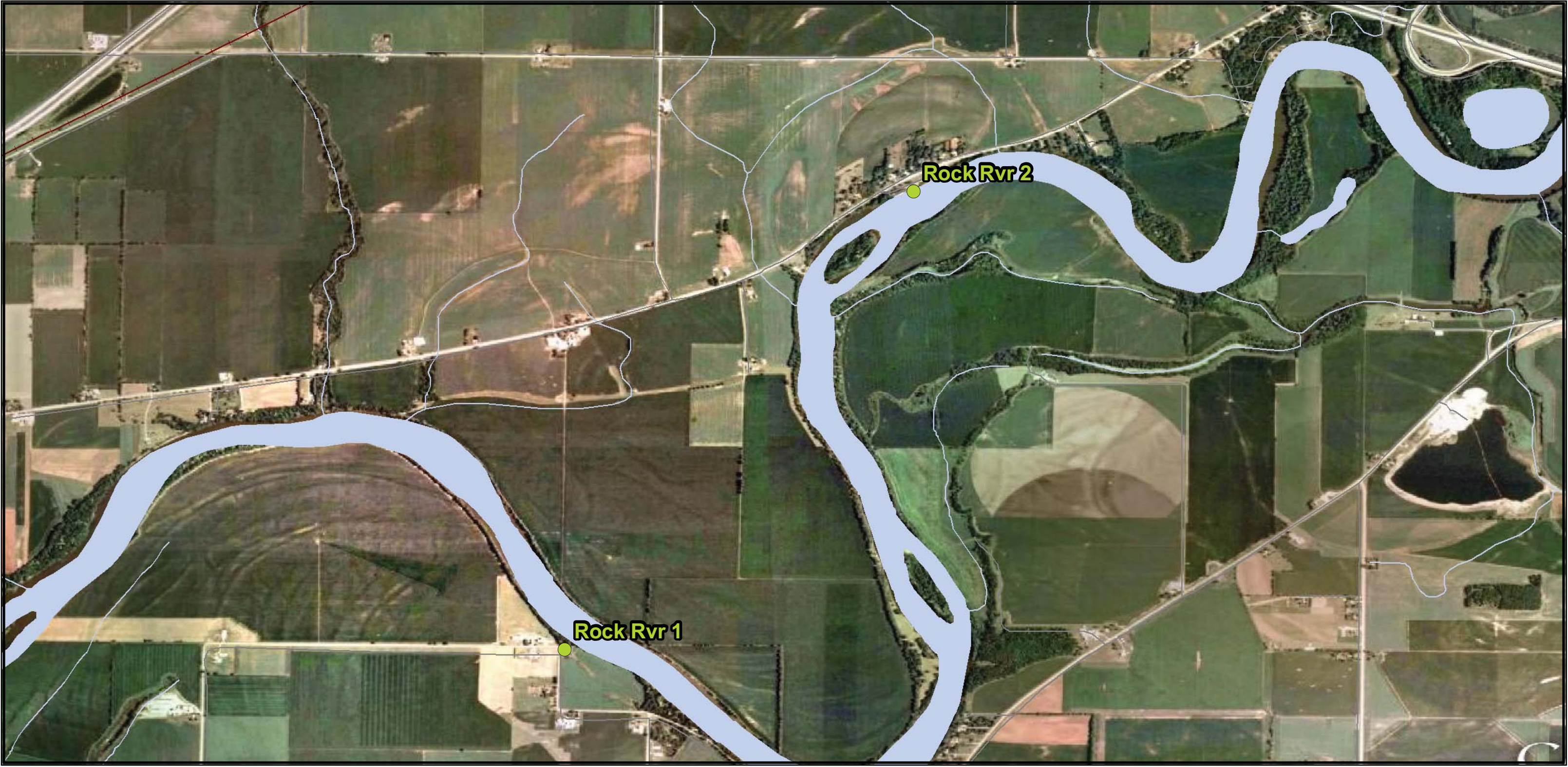
The attached table presents the surface water results for June 21, 2009 and applicable screening levels.

Analytical Results Summary
Perryville, IL
(ug/L)

Chemicals	Date Collected	Time Collected	TPH-GRO	Benzene	Ethylbenzene	Toluene	Xylene	m&p-Xylene	o-Xylene
ROCK RIVER 1	6/21/2009	17:05	NA	<0.41	<0.54	<0.67	<2.6	<1.8	<0.83
ROCK RIVER 2	6/21/2009	18:10	<39.6	<0.41	<0.54	<0.67	<2.6	<1.8	<0.83
Human Health Screening Levels			*340	5	700	1,000	10,000	NA	NA
Region 5 Ecological Screening Levels			NA	114	14	253	27	NA	NA

*LDEQ MO1-Standard GW-1

NA - Not Available



Sample Location For Rock River - June 21, 2009

Legend

● Sample Locations selection

0 0.2 0.4 0.8 Miles

N



Center for Toxicology
and Environmental Health