

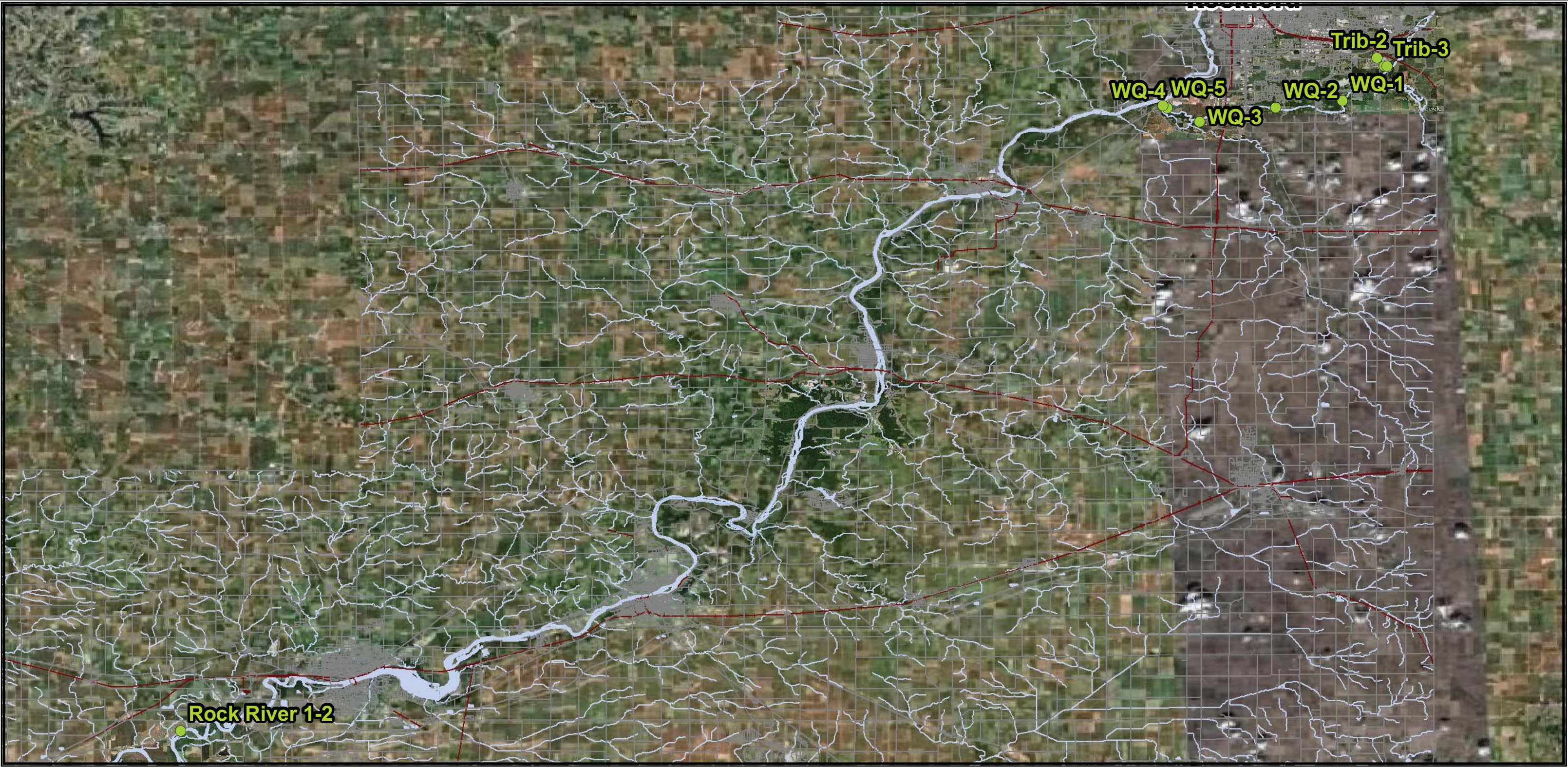
**Analytical Results Summary**  
**Perryville, IL**  
**June 22, 2009**

Eleven surface water samples (TRIB-BKG, TRIB-1, TRIB-2, TRIB-3, ROCK RVR 1-2, KISH BKG, WQ 1, WQ 2, WQ 3, WQ 4, and WQ 5) were collected from the unnamed tributary that releases into the Kishwaukee River, the Rock River, and the Kishwaukee River on June 22, 2009 and analyzed for Total Petroleum Hydrocarbons – Gasoline Range Organics (TPH-GRO), benzene, ethylbenzene, toluene, xylene, m&p-xylene, and o-xylene. In addition to surface water samples, a community well sample (COUNTRY HILLS WELL # 1) was collected. The actual name of the community well is Conventry Hills and is located at 6110 Abington Drive. The surface water sample locations and community well sample location are presented in the attached figures. TPH-GRO was analyzed by USEPA Method 5030/8015 Modified. Benzene, ethylbenzene, toluene, xylene, m&p-xylene, and o-xylene were analyzed by USEPA Method 8260.

Analytical results were compared to Illinois Environmental Protection Agency (Illinois EPA) Tier 1 Groundwater Remediation Objectives for the Groundwater Component of the Groundwater Ingestion Route for all chemicals except TPH-GRO. Illinois EPA does not have a groundwater value for TPH-GRO, therefore the value developed by the Louisiana Department of Environmental Quality (LDEQ) for Class I groundwater was used. All chemicals analyzed were non-detect except for TPH-GRO which had estimated concentrations below the detection limit. All analytical results are well below their applicable human health screening level.

Analytical results were also compared to Region 5 Ecological Screening Levels (ESLs) to assess any potential impact to the ecosystem. All chemicals analyzed that have a Region 5 ESL were non-detect and are well below their applicable screening level.

The attached table presents the surface water and community well results for June 22, 2009 and applicable screening levels.



Sample Location For Rock River - June 22, 2009

**Legend**

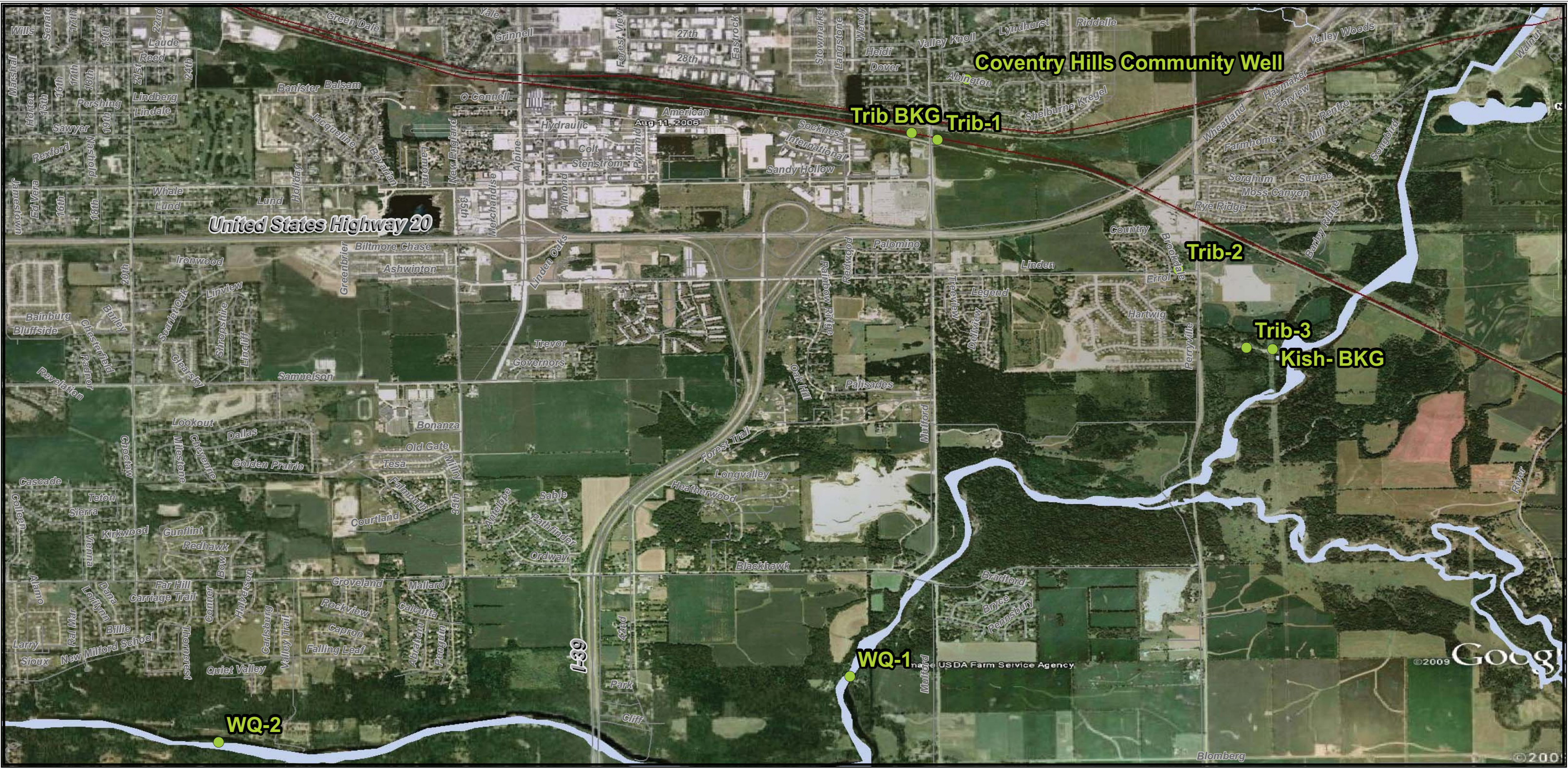
● Station Locations

0 1.25 2.5 5 Miles

N



Center for Toxicology  
and Environmental Health



Sample Location For Rock River - June 22, 2009

**Legend**

● Station Locations

N

0 0.125 0.25 0.5 Miles



Center for Toxicology  
and Environmental Health



Sample Location For Rock River - June 22, 2009

**Legend**

● Station Locations

0 0.1 0.2 0.4 Miles



Center for Toxicology  
and Environmental Health



Sample Location For Rock River - June 22, 2009

**Legend**

● Station Locations

0 0.03 0.06 0.12 Miles

N



Center for Toxicology  
and Environmental Health