

Analytical Results Summary
Perryville, IL
June 23, 2009

Twenty surface water samples (TRIB-2, TRIB-3, WQ-6, WQ-7, WQ-10, WQ-11, WQ-12, WQ-9, WQ-8, TRIB-1, SOURCE-1, WQ(R)-1L, WQ(R)-1R, WQ(R)-2L, WQ(R)-2R, WQ(R)-3L, WQ(R)-3R, WQ(R)-4L, WQ(R)-4R, WQ(R)-5) were collected from the unnamed tributary that releases into the Kishwaukee River, the Rock River, and the Kishwaukee River on June 23, 2009 and analyzed for Total Petroleum Hydrocarbons – Gasoline Range Organics (TPH-GRO), benzene, ethylbenzene, toluene, xylene, m&p-xylene, and o-xylene. The surface water sample locations are presented in the attached figures. TPH-GRO was analyzed by USEPA Method 5030/8015 Modified. Benzene, ethylbenzene, toluene, xylene, m&p-xylene, and o-xylene were analyzed by USEPA Method 8260.

Analytical results were compared to Illinois Environmental Protection Agency (Illinois EPA) Tier 1 Groundwater Remediation Objectives for the Groundwater Component of the Groundwater Ingestion Route for all chemicals except TPH-GRO. Illinois EPA does not have a groundwater value for TPH-GRO, therefore the value developed by the Louisiana Department of Environmental Quality (LDEQ) for Class I groundwater was used. All chemicals analyzed were non-detect and are well below their applicable human health screening level.

Analytical results were also compared to Region 5 Ecological Screening Levels (ESLs) to assess any potential impact to the ecosystem. All chemicals analyzed were non-detect and are well below their applicable screening level.

The attached table presents the surface water results for June 23, 2009 and applicable screening levels.



Sample Location For Rock River - June 23, 2009

Legend

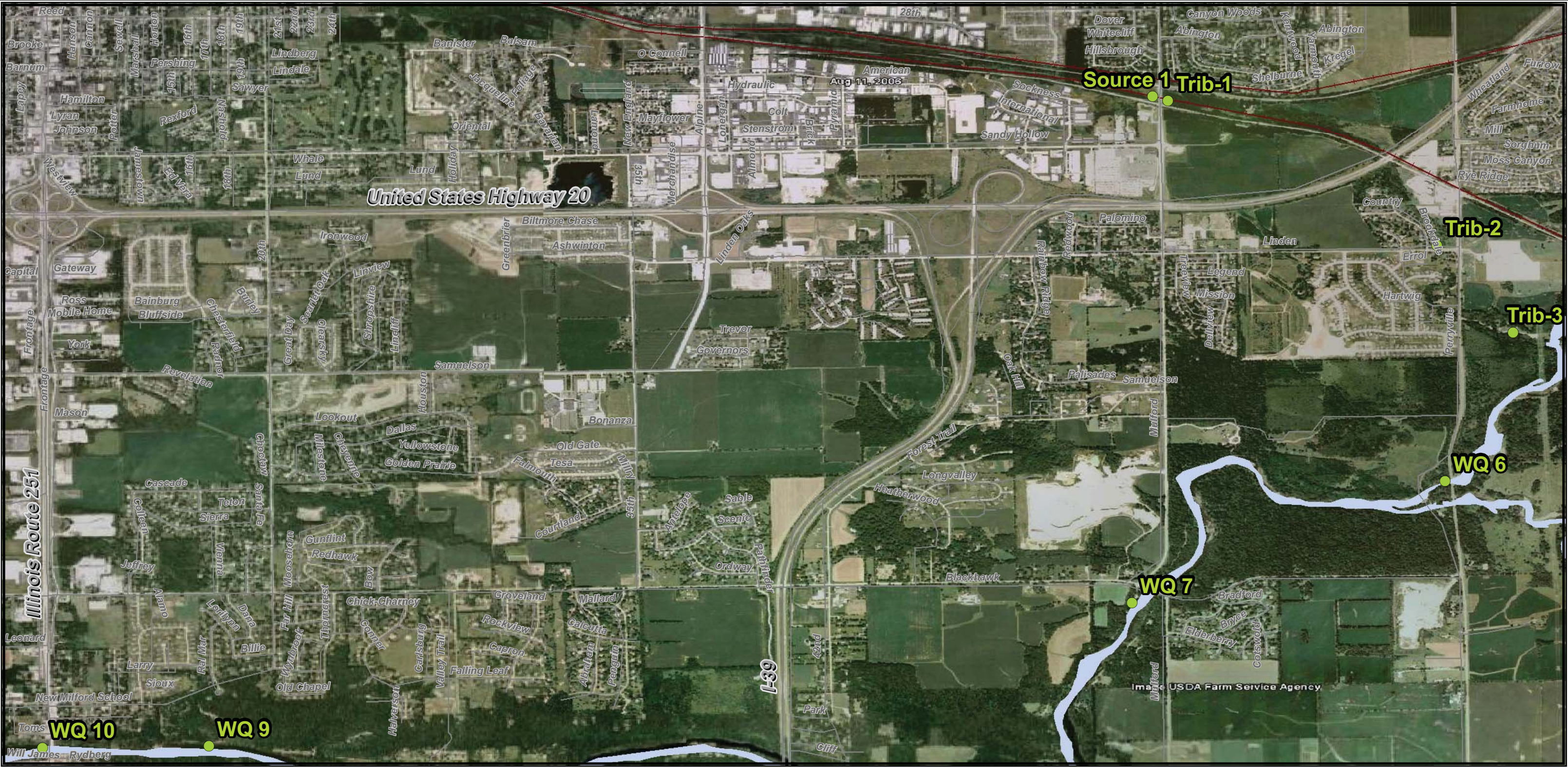
● Station Locations

0 1.25 2.5 5 Miles

N



Center for Toxicology
and Environmental Health



Sample Location For Rock River - June 23, 2009

Legend

● Station Locations

0 0.2 0.4 0.8 Miles

N



Center for Toxicology
and Environmental Health



Sample Location For Rock River - June 23, 2009

Legend

● Station Locations

0 0.1 0.2 0.4 Miles

N



**Center for Toxicology
and Environmental Health**



Sample Location For Rock River - June 23, 2009

Legend

● Station Locations

0 0.125 0.25 0.5 Miles

N



Center for Toxicology
and Environmental Health