

**Water Analytical Results Summary**  
**Perryville, IL**  
**June 24, 2009**

Sixteen surface water samples (WQ(R)-6L, WQ(R)-6R, WQ(R)-7L, WQ(R)-7R, WQ(R)-8L, WQ(R)-8R, WQ(R)-9L, WQ(R)-9R, WQ(R)-10L, WQ(R)-10R, WQ(R)-11L, WQ(R)-11R, WQ(R)-12L, WQ(R)-12R, WQ(R)-13L, and WQ(R)-13R) were collected from the Rock River on June 24, 2009. In addition to surface water samples, seven residential well samples (5965 WHITECLIFF, 5877 HILLSBROUGH RD, 4480 CLOVERCREST, 5971 HILLSBROUGH, 5949 HILLSBROUGH CIR., 4466 BROOKDALE, and 3496 S. MULFORD) were collected in the adjacent area to the derailment. All water samples were analyzed for Total Petroleum Hydrocarbons – Gasoline Range Organics (TPH-GRO), benzene, ethylbenzene, toluene, xylene, m&p-xylene, and o-xylene. TPH-GRO was analyzed by USEPA Method 5030/8015 Modified. Benzene, ethylbenzene, toluene, xylene, m&p-xylene, and o-xylene were analyzed by USEPA Method 8260. The surface water sample locations and residential well sample locations are presented in the attached figures.

Analytical results were compared to Illinois Environmental Protection Agency (Illinois EPA) Tier 1 Groundwater Remediation Objectives for the Groundwater Component of the Groundwater Ingestion Route for all chemicals except TPH-GRO. Illinois EPA does not have a groundwater value for TPH-GRO, therefore the value developed by the Louisiana Department of Environmental Quality (LDEQ) for Class I groundwater was used. All chemicals analyzed were non-detect and are well below their applicable human health screening level.

Analytical results were also compared to Region 5 Ecological Screening Levels (ESLs) to assess any potential impact to the ecosystem. All chemicals analyzed were non-detect and are well below their applicable screening level.

The attached table presents the surface water and residential well results for June 24, 2009 and applicable screening levels.

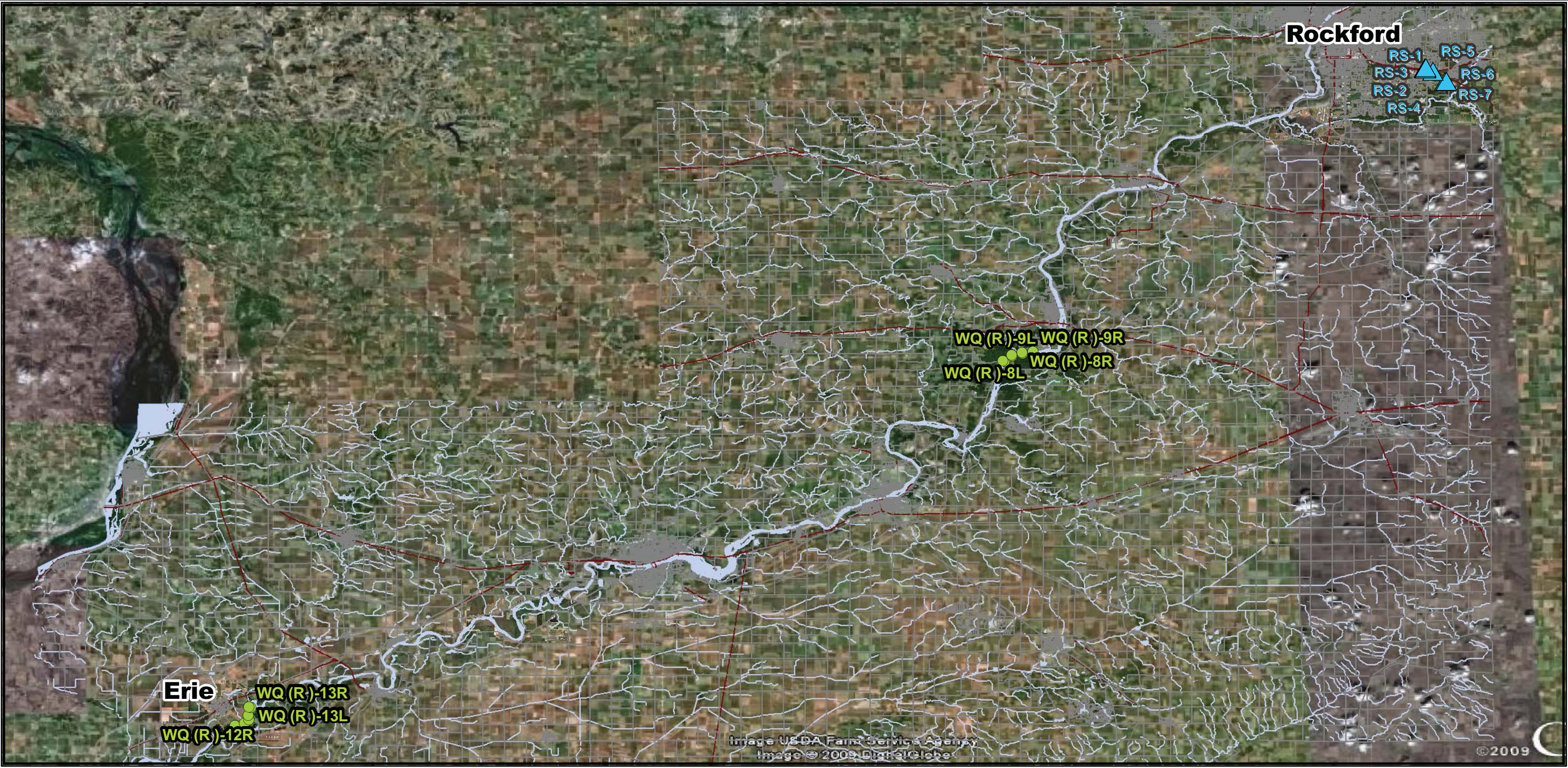
Water Analytical Results Summary  
Perryville, IL  
(ug/L)

Sample ID	Date Collected	Time Collected	TPH-GRO	Benzene	Ethylbenzene	Toluene	Xylene	m&p-Xylene	o-Xylene
WQ(R)-6L	6/24/2009	09:20	<100	<1.0	<1.0	<1.0	<3.0	<2.0	<1.0
WQ(R)-6R	6/24/2009	09:15	<100	<1.0	<1.0	<1.0	<3.0	<2.0	<1.0
WQ(R)-7L	6/24/2009	09:35	<100	<1.0	<1.0	<1.0	<3.0	<2.0	<1.0
WQ(R)-7R	6/24/2009	09:42	<100	<1.0	<1.0	<1.0	<3.0	<2.0	<1.0
WQ(R)-8L	6/24/2009	09:52	<100	<1.0	<1.0	<1.0	<3.0	<2.0	<1.0
WQ(R)-8R	6/24/2009	10:00	<100	<1.0	<1.0	<1.0	<3.0	<2.0	<1.0
WQ(R)-9L	6/24/2009	10:17	<100	<1.0	<1.0	<1.0	<3.0	<2.0	<1.0
WQ(R)-9R	6/24/2009	10:10	<100	<1.0	<1.0	<1.0	<3.0	<2.0	<1.0
WQ(R)-10L	6/24/2009	12:37	<100	<1.0	<1.0	<1.0	<3.0	<2.0	<1.0
WQ(R)-10R	6/24/2009	12:25	<100	<1.0	<1.0	<1.0	<3.0	<2.0	<1.0
WQ(R)-11L	6/24/2009	12:47	<100	<1.0	<1.0	<1.0	<3.0	<2.0	<1.0
WQ(R)-11R	6/24/2009	12:58	<100	<1.0	<1.0	<1.0	<3.0	<2.0	<1.0
WQ(R)-12L	6/24/2009	13:15	<100	<1.0	<1.0	<1.0	<3.0	<2.0	<1.0
WQ(R)-12R	6/24/2009	13:07	<100	<1.0	<1.0	<1.0	<3.0	<2.0	<1.0
WQ(R)-13L	6/24/2009	13:22	<100	<1.0	<1.0	<1.0	<3.0	<2.0	<1.0
WQ(R)-13R	6/24/2009	13:30	<100	<1.0	<1.0	<1.0	<3.0	<2.0	<1.0
5965 WHITECLIFF	6/24/2009	15:30	<100	<1.0	<1.0	<1.0	<3.0	<2.0	<1.0
5877 HILLSBROUGH RD	6/24/2009	16:00	<100	<1.0	<1.0	<1.0	<3.0	<2.0	<1.0
4480 CLOVERCREST	6/24/2009	17:32	<100	<1.0	<1.0	<1.0	<3.0	<2.0	<1.0
5971 HILLSBROUGH	6/24/2009	16:20	<100	<1.0	<1.0	<1.0	<3.0	<2.0	<1.0
5949 HILLSBROUGH CIR.	6/24/2009	15:40	<100	<1.0	<1.0	<1.0	<3.0	<2.0	<1.0
4466 BROOKDALE	6/24/2009	17:10	<100	<1.0	<1.0	<1.0	<3.0	<2.0	<1.0
3496 S. MULFORD	6/24/2009	16:40	<100	<1.0	<1.0	<1.0	<3.0	<2.0	<1.0
Human Health Screening Levels			<b>*340</b>	<b>5</b>	<b>700</b>	<b>1,000</b>	<b>10,000</b>	<b>NA</b>	<b>NA</b>
Region 5 Ecological Screening Levels			<b>NA</b>	<b>114</b>	<b>14</b>	<b>253</b>	<b>27</b>	<b>NA</b>	<b>NA</b>

\*LDEQ MO1-Standard GW-1

NA - Not Available





Surface Water and Residential Well Sample Locations - June 24, 2009

**Legend**

- ▲ Residential Well Samples
- Surface Water Samples

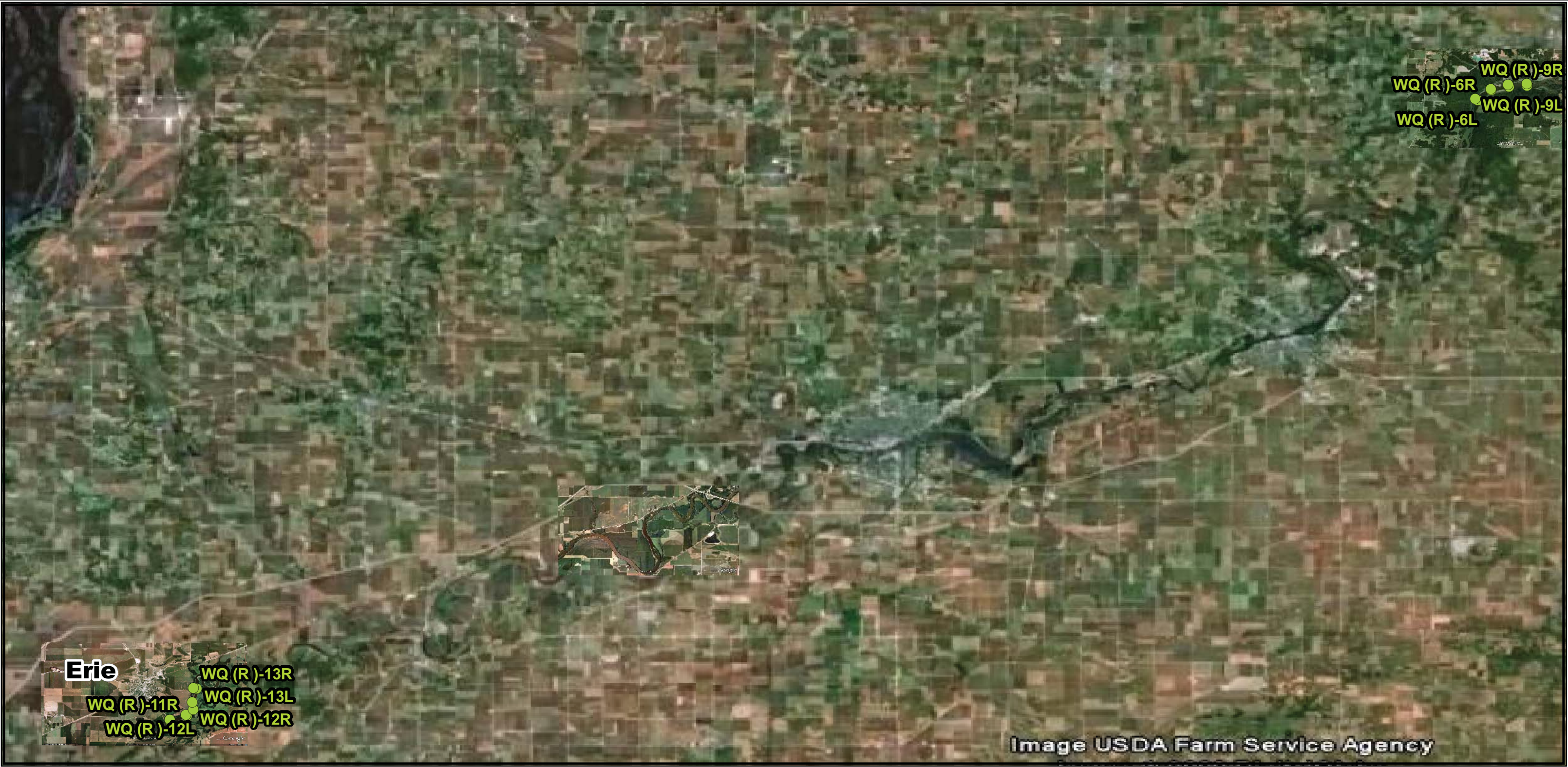
N

0 1.252.5 5 Miles



Center for Toxicology  
and Environmental Health





Sample Locations For Rock River - June 24, 2009

**Legend**

● Surface Water Samples

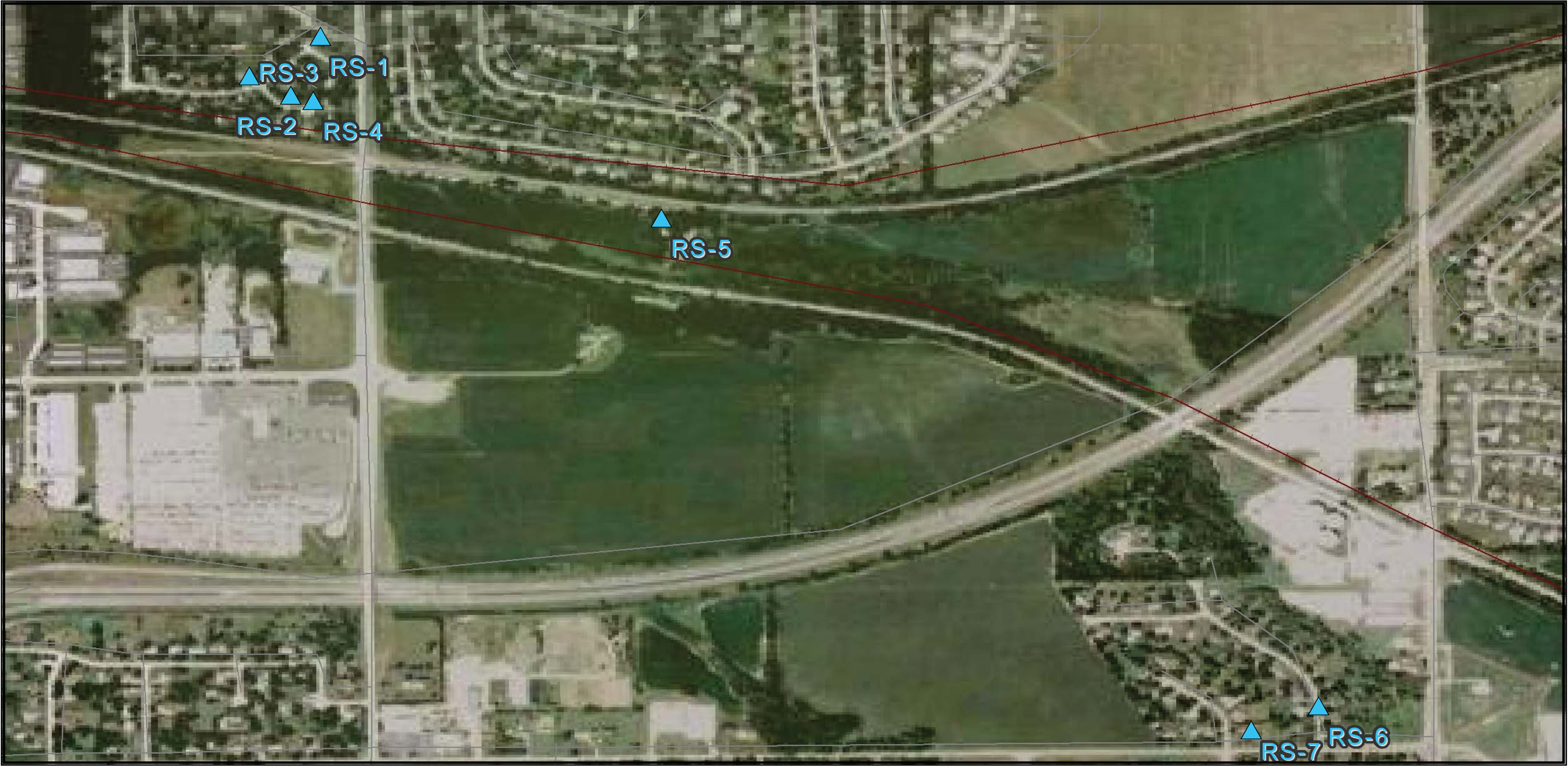
0 1.5 3 6 Miles

N



Center for Toxicology  
and Environmental Health





Residential Well Sample Locations - June 24, 2009

**Legend**

▲ Residential Well Samples

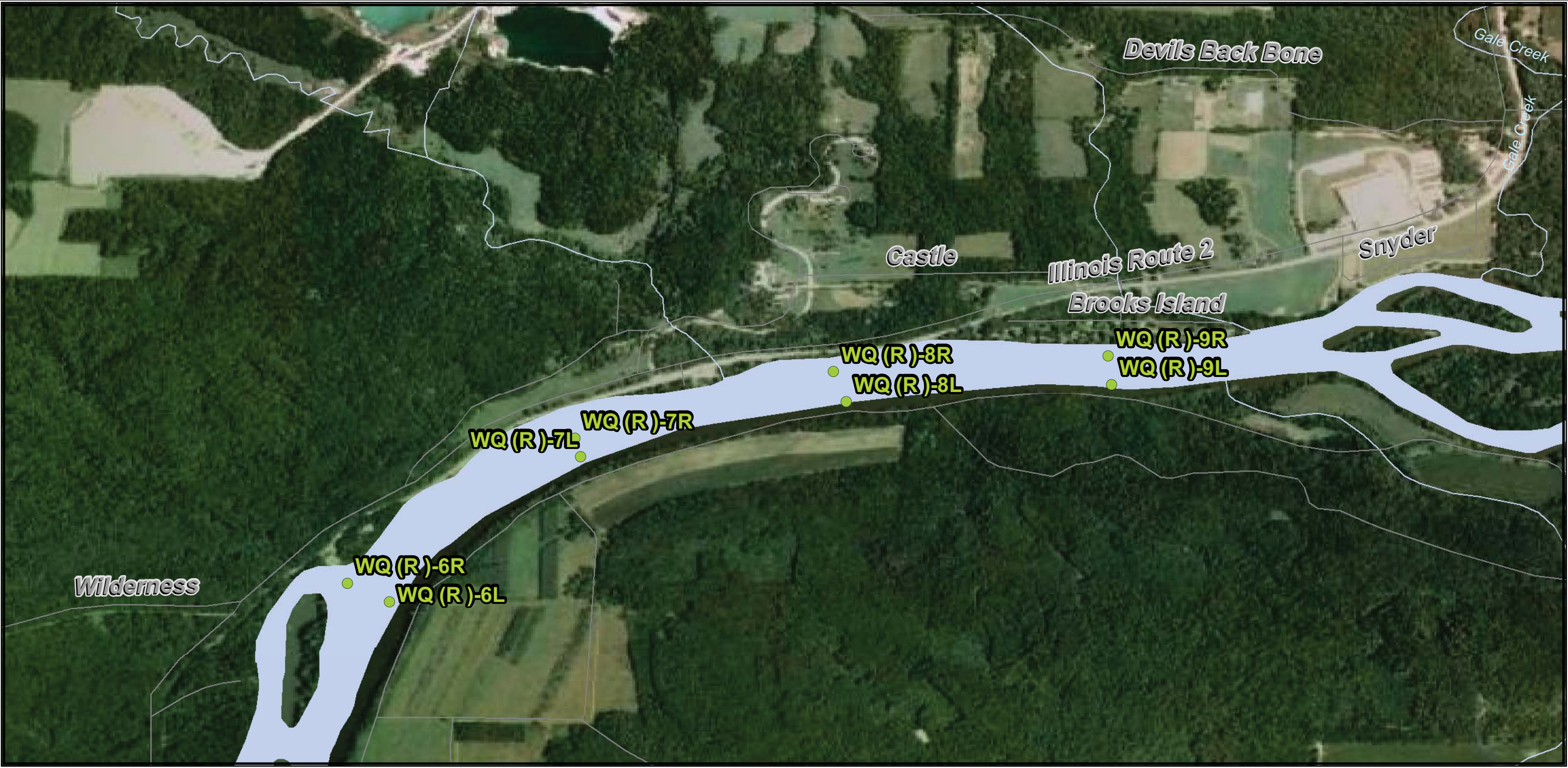
N

0 0.035 0.07 0.14 Miles



**Center for Toxicology  
and Environmental Health**





Sample Locations For Rock River - June 24, 2009

**Legend**

● Surface Water Samples

0 0.1 0.2 0.4 Miles

N



Center for Toxicology  
and Environmental Health





Sample Locations For Rock River - June 24, 2009

**Legend**

● Surface Water Samples

0 0.125 0.25 0.5 Miles



Center for Toxicology  
and Environmental Health



June 25, 2009

Devin Sprinkle  
Chicago Central & Pacific Railroad  
17641 South Ashland Ave  
Homewood, IL 60430

RE: Project: PERRYVILLE, IL  
Pace Project No.: 4019067

Dear Devin Sprinkle:

Enclosed are the analytical results for sample(s) received by the laboratory on June 24, 2009. The results relate only to the samples included in this report. Results reported herein conform to the most current NELAC standards, where applicable, unless otherwise narrated in the body of the report.

If you have any questions concerning this report, please feel free to contact me.

Sincerely,



Brian Basten for  
Laurie Woelfel  
laurie.woelfel@pacelabs.com  
Project Manager

Enclosures

## REPORT OF LABORATORY ANALYSIS

Page 1 of 19

This report shall not be reproduced, except in full,  
without the written consent of Pace Analytical Services, Inc..





## CERTIFICATIONS

Project: PERRYVILLE, IL

Pace Project No.: 4019067

---

### Green Bay Certification IDs

Wisconsin DATCP Certification #: 105-444  
Wisconsin DATCP Certification #: 105-444  
Wisconsin Certification #: 405132750  
Wisconsin Certification #: 405132750  
South Carolina Certification #: 83006001  
South Carolina Certification #: 83006001  
North Dakota Certification #: R-200  
North Dakota Certification #: R-150  
North Carolina Certification #: 503  
North Carolina Certification #: 503  
New York Certification #: 11887

New York Certification #: 11888  
Minnesota Certification #: 055-999-334  
Minnesota Certification #: 055-999-334  
Louisiana Certification #: 04169  
Louisiana Certification #: 04168  
Kentucky Certification #: 83  
Kentucky Certification #: 82  
Illinois Certification #: 200051  
Illinois Certification #: 200050  
Florida/NELAP Certification #: E87951  
Florida/NELAP Certification #: E87948

---

## REPORT OF LABORATORY ANALYSIS

Page 2 of 19

This report shall not be reproduced, except in full,  
without the written consent of Pace Analytical Services, Inc..



## SAMPLE SUMMARY

Project: PERRYVILLE, IL

Pace Project No.: 4019067

Lab ID	Sample ID	Matrix	Date Collected	Date Received
4019067001	WQ(R)-6L	Water	06/24/09 09:20	06/24/09 21:16
4019067002	WQ(R)-6R	Water	06/24/09 09:15	06/24/09 21:16
4019067003	WQ(R)-7L	Water	06/24/09 09:35	06/24/09 21:16
4019067004	WQ(R)-7R	Water	06/24/09 09:42	06/24/09 21:16
4019067005	WQ(R)-8L	Water	06/24/09 09:52	06/24/09 21:16
4019067006	WQ(R)-8R	Water	06/24/09 10:00	06/24/09 21:16
4019067007	WQ(R)-9L	Water	06/24/09 10:17	06/24/09 21:16
4019067008	WQ(R)-9R	Water	06/24/09 10:10	06/24/09 21:16
4019067009	WQ(R)-10L	Water	06/24/09 12:37	06/24/09 21:16
4019067010	WQ(R)-10R	Water	06/24/09 12:25	06/24/09 21:16
4019067011	WQ(R)-11L	Water	06/24/09 12:47	06/24/09 21:16
4019067012	WQ(R)-11R	Water	06/24/09 12:58	06/24/09 21:16
4019067013	WQ(R)-12L	Water	06/24/09 13:15	06/24/09 21:16
4019067014	WQ(R)-12R	Water	06/24/09 13:07	06/24/09 21:16
4019067015	WQ(R)-13L	Water	06/24/09 13:22	06/24/09 21:16
4019067016	WQ(R)-13R	Water	06/24/09 13:30	06/24/09 21:16
4019067017	TRIP BLANK	Water	06/24/09 00:00	06/24/09 21:16

## REPORT OF LABORATORY ANALYSIS

Page 3 of 19

This report shall not be reproduced, except in full,  
without the written consent of Pace Analytical Services, Inc..



## SAMPLE ANALYTE COUNT

Project: PERRYVILLE, IL

Pace Project No.: 4019067

Lab ID	Sample ID	Method	Analysts	Analytes Reported	Laboratory
4019067001	WQ(R)-6L	EPA 5030/8015 Mod.	PMS	1	PASI-G
		EPA 8260	JJB	9	PASI-G
4019067002	WQ(R)-6R	EPA 5030/8015 Mod.	PMS	1	PASI-G
		EPA 8260	JJB	9	PASI-G
4019067003	WQ(R)-7L	EPA 5030/8015 Mod.	PMS	1	PASI-G
		EPA 8260	JJB	9	PASI-G
4019067004	WQ(R)-7R	EPA 5030/8015 Mod.	PMS	1	PASI-G
		EPA 8260	JJB	9	PASI-G
4019067005	WQ(R)-8L	EPA 5030/8015 Mod.	PMS	1	PASI-G
		EPA 8260	JJB	9	PASI-G
4019067006	WQ(R)-8R	EPA 5030/8015 Mod.	PMS	1	PASI-G
		EPA 8260	JJB	9	PASI-G
4019067007	WQ(R)-9L	EPA 5030/8015 Mod.	PMS	1	PASI-G
		EPA 8260	JJB	9	PASI-G
4019067008	WQ(R)-9R	EPA 5030/8015 Mod.	PMS	1	PASI-G
		EPA 8260	JJB	9	PASI-G
4019067009	WQ(R)-10L	EPA 5030/8015 Mod.	PMS	1	PASI-G
		EPA 8260	JJB	9	PASI-G
4019067010	WQ(R)-10R	EPA 5030/8015 Mod.	PMS	1	PASI-G
		EPA 8260	SMT	9	PASI-G
4019067011	WQ(R)-11L	EPA 5030/8015 Mod.	PMS	1	PASI-G
		EPA 8260	SMT	9	PASI-G
4019067012	WQ(R)-11R	EPA 5030/8015 Mod.	PMS	1	PASI-G
		EPA 8260	SMT	9	PASI-G
4019067013	WQ(R)-12L	EPA 5030/8015 Mod.	PMS	1	PASI-G
		EPA 8260	SMT	9	PASI-G
4019067014	WQ(R)-12R	EPA 5030/8015 Mod.	PMS	1	PASI-G
		EPA 8260	SMT	9	PASI-G
4019067015	WQ(R)-13L	EPA 5030/8015 Mod.	PMS	1	PASI-G
		EPA 8260	SMT	9	PASI-G
4019067016	WQ(R)-13R	EPA 5030/8015 Mod.	PMS	1	PASI-G
		EPA 8260	SMT	9	PASI-G
4019067017	TRIP BLANK	EPA 8260	SMT	9	PASI-G

## REPORT OF LABORATORY ANALYSIS

Page 4 of 19

This report shall not be reproduced, except in full,  
without the written consent of Pace Analytical Services, Inc..





## PROJECT NARRATIVE

Project: PERRYVILLE, IL

Pace Project No.: 4019067

---

**Method:** EPA 5030/8015 Mod.

**Description:** Gasoline Range Organics

**Client:** Chicago Central & Pacific Railroad

**Date:** June 25, 2009

**General Information:**

16 samples were analyzed for EPA 5030/8015 Mod.. All samples were received in acceptable condition with any exceptions noted below.

**Hold Time:**

The samples were analyzed within the method required hold times with any exceptions noted below.

**Initial Calibrations (including MS Tune as applicable):**

All criteria were within method requirements with any exceptions noted below.

**Continuing Calibration:**

All criteria were within method requirements with any exceptions noted below.

**Internal Standards:**

All internal standards were within QC limits with any exceptions noted below.

**Surrogates:**

All surrogates were within QC limits with any exceptions noted below.

**Method Blank:**

All analytes were below the report limit in the method blank with any exceptions noted below.

**Laboratory Control Spike:**

All laboratory control spike compounds were within QC limits with any exceptions noted below.

**Matrix Spikes:**

All percent recoveries and relative percent differences (RPDs) were within acceptance criteria with any exceptions noted below.

**Duplicate Sample:**

All duplicate sample results were within method acceptance criteria with any exceptions noted below.

**Additional Comments:**

## REPORT OF LABORATORY ANALYSIS

Page 5 of 19

This report shall not be reproduced, except in full,  
without the written consent of Pace Analytical Services, Inc..





## PROJECT NARRATIVE

Project: PERRYVILLE, IL

Pace Project No.: 4019067

---

**Method:** EPA 8260

**Description:** 8260 MSV UST

**Client:** Chicago Central & Pacific Railroad

**Date:** June 25, 2009

**General Information:**

17 samples were analyzed for EPA 8260. All samples were received in acceptable condition with any exceptions noted below.

**Hold Time:**

The samples were analyzed within the method required hold times with any exceptions noted below.

**Initial Calibrations (including MS Tune as applicable):**

All criteria were within method requirements with any exceptions noted below.

**Continuing Calibration:**

All criteria were within method requirements with any exceptions noted below.

**Internal Standards:**

All internal standards were within QC limits with any exceptions noted below.

**Surrogates:**

All surrogates were within QC limits with any exceptions noted below.

**Method Blank:**

All analytes were below the report limit in the method blank with any exceptions noted below.

**Laboratory Control Spike:**

All laboratory control spike compounds were within QC limits with any exceptions noted below.

**Matrix Spikes:**

All percent recoveries and relative percent differences (RPDs) were within acceptance criteria with any exceptions noted below.

**Duplicate Sample:**

All duplicate sample results were within method acceptance criteria with any exceptions noted below.

**Additional Comments:**

This data package has been reviewed for quality and completeness and is approved for release.

## REPORT OF LABORATORY ANALYSIS

Page 6 of 19

This report shall not be reproduced, except in full,  
without the written consent of Pace Analytical Services, Inc..





## ANALYTICAL RESULTS

Project: PERRYVILLE, IL  
Pace Project No.: 4019067

Sample: WQ(R)-6L		Lab ID: 4019067001	Collected: 06/24/09 09:20	Received: 06/24/09 21:16	Matrix: Water			
Parameters	Results	Units	Report Limit	DF	Prepared	Analyzed	CAS No.	Qual
<b>Gasoline Range Organics</b>		Analytical Method: EPA 5030/8015 Mod.						
TPH (C06-C10)	ND ug/L		100	1		06/25/09 08:16		
<b>8260 MSV UST</b>		Analytical Method: EPA 8260						
Benzene	ND ug/L		1.0	1		06/25/09 08:17	71-43-2	
Ethylbenzene	ND ug/L		1.0	1		06/25/09 08:17	100-41-4	
Toluene	ND ug/L		1.0	1		06/25/09 08:17	108-88-3	
Xylene (Total)	ND ug/L		3.0	1		06/25/09 08:17	1330-20-7	
m&p-Xylene	ND ug/L		2.0	1		06/25/09 08:17	1330-20-7	
o-Xylene	ND ug/L		1.0	1		06/25/09 08:17	95-47-6	
Dibromofluoromethane (S)	85 %		70-130	1		06/25/09 08:17	1868-53-7	
Toluene-d8 (S)	95 %		70-130	1		06/25/09 08:17	2037-26-5	
4-Bromofluorobenzene (S)	94 %		70-130	1		06/25/09 08:17	460-00-4	

Sample: WQ(R)-6R		Lab ID: 4019067002	Collected: 06/24/09 09:15	Received: 06/24/09 21:16	Matrix: Water			
Parameters	Results	Units	Report Limit	DF	Prepared	Analyzed	CAS No.	Qual
<b>Gasoline Range Organics</b>		Analytical Method: EPA 5030/8015 Mod.						
TPH (C06-C10)	ND ug/L		100	1		06/25/09 08:41		
<b>8260 MSV UST</b>		Analytical Method: EPA 8260						
Benzene	ND ug/L		1.0	1		06/25/09 08:39	71-43-2	
Ethylbenzene	ND ug/L		1.0	1		06/25/09 08:39	100-41-4	
Toluene	ND ug/L		1.0	1		06/25/09 08:39	108-88-3	
Xylene (Total)	ND ug/L		3.0	1		06/25/09 08:39	1330-20-7	
m&p-Xylene	ND ug/L		2.0	1		06/25/09 08:39	1330-20-7	
o-Xylene	ND ug/L		1.0	1		06/25/09 08:39	95-47-6	
Dibromofluoromethane (S)	87 %		70-130	1		06/25/09 08:39	1868-53-7	
Toluene-d8 (S)	96 %		70-130	1		06/25/09 08:39	2037-26-5	
4-Bromofluorobenzene (S)	93 %		70-130	1		06/25/09 08:39	460-00-4	

Sample: WQ(R)-7L		Lab ID: 4019067003	Collected: 06/24/09 09:35	Received: 06/24/09 21:16	Matrix: Water			
Parameters	Results	Units	Report Limit	DF	Prepared	Analyzed	CAS No.	Qual
<b>Gasoline Range Organics</b>		Analytical Method: EPA 5030/8015 Mod.						
TPH (C06-C10)	ND ug/L		100	1		06/25/09 06:59		
<b>8260 MSV UST</b>		Analytical Method: EPA 8260						
Benzene	ND ug/L		1.0	1		06/25/09 09:02	71-43-2	
Ethylbenzene	ND ug/L		1.0	1		06/25/09 09:02	100-41-4	
Toluene	ND ug/L		1.0	1		06/25/09 09:02	108-88-3	
Xylene (Total)	ND ug/L		3.0	1		06/25/09 09:02	1330-20-7	
m&p-Xylene	ND ug/L		2.0	1		06/25/09 09:02	1330-20-7	

Date: 06/25/2009 02:56 PM

## REPORT OF LABORATORY ANALYSIS

Page 7 of 19

This report shall not be reproduced, except in full,  
without the written consent of Pace Analytical Services, Inc..





## ANALYTICAL RESULTS

Project: PERRYVILLE, IL  
Pace Project No.: 4019067

Sample: WQ(R)-7L		Lab ID: 4019067003	Collected: 06/24/09 09:35	Received: 06/24/09 21:16	Matrix: Water			
Parameters	Results	Units	Report Limit	DF	Prepared	Analyzed	CAS No.	Qual
<b>8260 MSV UST</b>		Analytical Method: EPA 8260						
o-Xylene	ND	ug/L	1.0	1		06/25/09 09:02	95-47-6	
Dibromofluoromethane (S)	88	%	70-130	1		06/25/09 09:02	1868-53-7	
Toluene-d8 (S)	96	%	70-130	1		06/25/09 09:02	2037-26-5	
4-Bromofluorobenzene (S)	95	%	70-130	1		06/25/09 09:02	460-00-4	

Sample: WQ(R)-7R		Lab ID: 4019067004	Collected: 06/24/09 09:42	Received: 06/24/09 21:16	Matrix: Water			
Parameters	Results	Units	Report Limit	DF	Prepared	Analyzed	CAS No.	Qual
<b>Gasoline Range Organics</b>		Analytical Method: EPA 5030/8015 Mod.						
TPH (C06-C10)	ND	ug/L	100	1		06/25/09 09:07		
<b>8260 MSV UST</b>		Analytical Method: EPA 8260						
Benzene	ND	ug/L	1.0	1		06/25/09 09:24	71-43-2	
Ethylbenzene	ND	ug/L	1.0	1		06/25/09 09:24	100-41-4	
Toluene	ND	ug/L	1.0	1		06/25/09 09:24	108-88-3	
Xylene (Total)	ND	ug/L	3.0	1		06/25/09 09:24	1330-20-7	
m&p-Xylene	ND	ug/L	2.0	1		06/25/09 09:24	1330-20-7	
o-Xylene	ND	ug/L	1.0	1		06/25/09 09:24	95-47-6	
Dibromofluoromethane (S)	90	%	70-130	1		06/25/09 09:24	1868-53-7	
Toluene-d8 (S)	96	%	70-130	1		06/25/09 09:24	2037-26-5	
4-Bromofluorobenzene (S)	93	%	70-130	1		06/25/09 09:24	460-00-4	

Sample: WQ(R)-8L		Lab ID: 4019067005	Collected: 06/24/09 09:52	Received: 06/24/09 21:16	Matrix: Water			
Parameters	Results	Units	Report Limit	DF	Prepared	Analyzed	CAS No.	Qual
<b>Gasoline Range Organics</b>		Analytical Method: EPA 5030/8015 Mod.						
TPH (C06-C10)	ND	ug/L	100	1		06/25/09 09:33		
<b>8260 MSV UST</b>		Analytical Method: EPA 8260						
Benzene	ND	ug/L	1.0	1		06/25/09 09:47	71-43-2	
Ethylbenzene	ND	ug/L	1.0	1		06/25/09 09:47	100-41-4	
Toluene	ND	ug/L	1.0	1		06/25/09 09:47	108-88-3	
Xylene (Total)	ND	ug/L	3.0	1		06/25/09 09:47	1330-20-7	
m&p-Xylene	ND	ug/L	2.0	1		06/25/09 09:47	1330-20-7	
o-Xylene	ND	ug/L	1.0	1		06/25/09 09:47	95-47-6	
Dibromofluoromethane (S)	92	%	70-130	1		06/25/09 09:47	1868-53-7	
Toluene-d8 (S)	97	%	70-130	1		06/25/09 09:47	2037-26-5	
4-Bromofluorobenzene (S)	94	%	70-130	1		06/25/09 09:47	460-00-4	



## ANALYTICAL RESULTS

Project: PERRYVILLE, IL  
Pace Project No.: 4019067

Sample: WQ(R)-8R		Lab ID: 4019067006		Collected: 06/24/09 10:00		Received: 06/24/09 21:16		Matrix: Water	
Parameters		Results	Units	Report Limit	DF	Prepared	Analyzed	CAS No.	Qual
Gasoline Range Organics		Analytical Method: EPA 5030/8015 Mod.							
TPH (C06-C10)		ND ug/L		100	1		06/25/09 09:59		
8260 MSV UST		Analytical Method: EPA 8260							
Benzene		ND ug/L		1.0	1		06/25/09 10:09	71-43-2	
Ethylbenzene		ND ug/L		1.0	1		06/25/09 10:09	100-41-4	
Toluene		ND ug/L		1.0	1		06/25/09 10:09	108-88-3	
Xylene (Total)		ND ug/L		3.0	1		06/25/09 10:09	1330-20-7	
m&p-Xylene		ND ug/L		2.0	1		06/25/09 10:09	1330-20-7	
o-Xylene		ND ug/L		1.0	1		06/25/09 10:09	95-47-6	
Dibromofluoromethane (S)		94 %		70-130	1		06/25/09 10:09	1868-53-7	
Toluene-d8 (S)		96 %		70-130	1		06/25/09 10:09	2037-26-5	
4-Bromofluorobenzene (S)		91 %		70-130	1		06/25/09 10:09	460-00-4	

Sample: WQ(R)-9L		Lab ID: 4019067007		Collected: 06/24/09 10:17		Received: 06/24/09 21:16		Matrix: Water	
Parameters		Results	Units	Report Limit	DF	Prepared	Analyzed	CAS No.	Qual
Gasoline Range Organics		Analytical Method: EPA 5030/8015 Mod.							
TPH (C06-C10)		ND ug/L		100	1		06/25/09 10:24		
8260 MSV UST		Analytical Method: EPA 8260							
Benzene		ND ug/L		1.0	1		06/25/09 10:32	71-43-2	
Ethylbenzene		ND ug/L		1.0	1		06/25/09 10:32	100-41-4	
Toluene		ND ug/L		1.0	1		06/25/09 10:32	108-88-3	
Xylene (Total)		ND ug/L		3.0	1		06/25/09 10:32	1330-20-7	
m&p-Xylene		ND ug/L		2.0	1		06/25/09 10:32	1330-20-7	
o-Xylene		ND ug/L		1.0	1		06/25/09 10:32	95-47-6	
Dibromofluoromethane (S)		98 %		70-130	1		06/25/09 10:32	1868-53-7	
Toluene-d8 (S)		95 %		70-130	1		06/25/09 10:32	2037-26-5	
4-Bromofluorobenzene (S)		92 %		70-130	1		06/25/09 10:32	460-00-4	

Sample: WQ(R)-9R		Lab ID: 4019067008		Collected: 06/24/09 10:10		Received: 06/24/09 21:16		Matrix: Water	
Parameters		Results	Units	Report Limit	DF	Prepared	Analyzed	CAS No.	Qual
Gasoline Range Organics		Analytical Method: EPA 5030/8015 Mod.							
TPH (C06-C10)		ND ug/L		100	1		06/25/09 10:50		
8260 MSV UST		Analytical Method: EPA 8260							
Benzene		ND ug/L		1.0	1		06/25/09 10:54	71-43-2	
Ethylbenzene		ND ug/L		1.0	1		06/25/09 10:54	100-41-4	
Toluene		ND ug/L		1.0	1		06/25/09 10:54	108-88-3	
Xylene (Total)		ND ug/L		3.0	1		06/25/09 10:54	1330-20-7	
m&p-Xylene		ND ug/L		2.0	1		06/25/09 10:54	1330-20-7	

Date: 06/25/2009 02:56 PM

## REPORT OF LABORATORY ANALYSIS

Page 9 of 19

This report shall not be reproduced, except in full,  
without the written consent of Pace Analytical Services, Inc..





## ANALYTICAL RESULTS

Project: PERRYVILLE, IL  
Pace Project No.: 4019067

Sample: WQ(R)-9R		Lab ID: 4019067008	Collected: 06/24/09 10:10	Received: 06/24/09 21:16	Matrix: Water			
Parameters	Results	Units	Report Limit	DF	Prepared	Analyzed	CAS No.	Qual
<b>8260 MSV UST</b>		Analytical Method: EPA 8260						
o-Xylene	ND	ug/L	1.0	1		06/25/09 10:54	95-47-6	
Dibromofluoromethane (S)	94	%	70-130	1		06/25/09 10:54	1868-53-7	
Toluene-d8 (S)	96	%	70-130	1		06/25/09 10:54	2037-26-5	
4-Bromofluorobenzene (S)	93	%	70-130	1		06/25/09 10:54	460-00-4	

Sample: WQ(R)-10L		Lab ID: 4019067009	Collected: 06/24/09 12:37	Received: 06/24/09 21:16	Matrix: Water			
Parameters	Results	Units	Report Limit	DF	Prepared	Analyzed	CAS No.	Qual
<b>Gasoline Range Organics</b>		Analytical Method: EPA 5030/8015 Mod.						
TPH (C06-C10)	ND	ug/L	100	1		06/25/09 08:28		
<b>8260 MSV UST</b>		Analytical Method: EPA 8260						
Benzene	ND	ug/L	1.0	1		06/25/09 11:17	71-43-2	
Ethylbenzene	ND	ug/L	1.0	1		06/25/09 11:17	100-41-4	
Toluene	ND	ug/L	1.0	1		06/25/09 11:17	108-88-3	
Xylene (Total)	ND	ug/L	3.0	1		06/25/09 11:17	1330-20-7	
m&p-Xylene	ND	ug/L	2.0	1		06/25/09 11:17	1330-20-7	
o-Xylene	ND	ug/L	1.0	1		06/25/09 11:17	95-47-6	
Dibromofluoromethane (S)	99	%	70-130	1		06/25/09 11:17	1868-53-7	
Toluene-d8 (S)	94	%	70-130	1		06/25/09 11:17	2037-26-5	
4-Bromofluorobenzene (S)	91	%	70-130	1		06/25/09 11:17	460-00-4	

Sample: WQ(R)-10R		Lab ID: 4019067010	Collected: 06/24/09 12:25	Received: 06/24/09 21:16	Matrix: Water			
Parameters	Results	Units	Report Limit	DF	Prepared	Analyzed	CAS No.	Qual
<b>Gasoline Range Organics</b>		Analytical Method: EPA 5030/8015 Mod.						
TPH (C06-C10)	ND	ug/L	100	1		06/25/09 08:54		
<b>8260 MSV UST</b>		Analytical Method: EPA 8260						
Benzene	ND	ug/L	1.0	1		06/25/09 10:29	71-43-2	
Ethylbenzene	ND	ug/L	1.0	1		06/25/09 10:29	100-41-4	
Toluene	ND	ug/L	1.0	1		06/25/09 10:29	108-88-3	
Xylene (Total)	ND	ug/L	3.0	1		06/25/09 10:29	1330-20-7	
m&p-Xylene	ND	ug/L	2.0	1		06/25/09 10:29	1330-20-7	
o-Xylene	ND	ug/L	1.0	1		06/25/09 10:29	95-47-6	
Dibromofluoromethane (S)	100	%	70-130	1		06/25/09 10:29	1868-53-7	
Toluene-d8 (S)	104	%	70-130	1		06/25/09 10:29	2037-26-5	
4-Bromofluorobenzene (S)	95	%	70-130	1		06/25/09 10:29	460-00-4	



## ANALYTICAL RESULTS

Project: PERRYVILLE, IL  
Pace Project No.: 4019067

<b>Sample: WQ(R)-11L</b>		<b>Lab ID: 4019067011</b>	Collected: 06/24/09 12:47		Received: 06/24/09 21:16		Matrix: Water	
Parameters	Results	Units	Report Limit	DF	Prepared	Analyzed	CAS No.	Qual
<b>Gasoline Range Organics</b>		Analytical Method: EPA 5030/8015 Mod.						
TPH (C06-C10)	ND ug/L		100	1		06/25/09 09:20		
<b>8260 MSV UST</b>		Analytical Method: EPA 8260						
Benzene	ND ug/L		1.0	1		06/25/09 10:53	71-43-2	
Ethylbenzene	ND ug/L		1.0	1		06/25/09 10:53	100-41-4	
Toluene	ND ug/L		1.0	1		06/25/09 10:53	108-88-3	
Xylene (Total)	ND ug/L		3.0	1		06/25/09 10:53	1330-20-7	
m&p-Xylene	ND ug/L		2.0	1		06/25/09 10:53	1330-20-7	
o-Xylene	ND ug/L		1.0	1		06/25/09 10:53	95-47-6	
Dibromofluoromethane (S)	96 %		70-130	1		06/25/09 10:53	1868-53-7	
Toluene-d8 (S)	105 %		70-130	1		06/25/09 10:53	2037-26-5	
4-Bromofluorobenzene (S)	98 %		70-130	1		06/25/09 10:53	460-00-4	

<b>Sample: WQ(R)-11R</b>		<b>Lab ID: 4019067012</b>	Collected: 06/24/09 12:58		Received: 06/24/09 21:16		Matrix: Water	
Parameters	Results	Units	Report Limit	DF	Prepared	Analyzed	CAS No.	Qual
<b>Gasoline Range Organics</b>		Analytical Method: EPA 5030/8015 Mod.						
TPH (C06-C10)	ND ug/L		100	1		06/25/09 09:46		
<b>8260 MSV UST</b>		Analytical Method: EPA 8260						
Benzene	ND ug/L		1.0	1		06/25/09 11:17	71-43-2	
Ethylbenzene	ND ug/L		1.0	1		06/25/09 11:17	100-41-4	
Toluene	ND ug/L		1.0	1		06/25/09 11:17	108-88-3	
Xylene (Total)	ND ug/L		3.0	1		06/25/09 11:17	1330-20-7	
m&p-Xylene	ND ug/L		2.0	1		06/25/09 11:17	1330-20-7	
o-Xylene	ND ug/L		1.0	1		06/25/09 11:17	95-47-6	
Dibromofluoromethane (S)	95 %		70-130	1		06/25/09 11:17	1868-53-7	
Toluene-d8 (S)	102 %		70-130	1		06/25/09 11:17	2037-26-5	
4-Bromofluorobenzene (S)	94 %		70-130	1		06/25/09 11:17	460-00-4	

<b>Sample: WQ(R)-12L</b>		<b>Lab ID: 4019067013</b>	Collected: 06/24/09 13:15		Received: 06/24/09 21:16		Matrix: Water	
Parameters	Results	Units	Report Limit	DF	Prepared	Analyzed	CAS No.	Qual
<b>Gasoline Range Organics</b>		Analytical Method: EPA 5030/8015 Mod.						
TPH (C06-C10)	ND ug/L		100	1		06/25/09 07:11		
<b>8260 MSV UST</b>		Analytical Method: EPA 8260						
Benzene	ND ug/L		1.0	1		06/25/09 11:41	71-43-2	
Ethylbenzene	ND ug/L		1.0	1		06/25/09 11:41	100-41-4	
Toluene	ND ug/L		1.0	1		06/25/09 11:41	108-88-3	
Xylene (Total)	ND ug/L		3.0	1		06/25/09 11:41	1330-20-7	
m&p-Xylene	ND ug/L		2.0	1		06/25/09 11:41	1330-20-7	

Date: 06/25/2009 02:56 PM

## REPORT OF LABORATORY ANALYSIS

Page 11 of 19

This report shall not be reproduced, except in full,  
without the written consent of Pace Analytical Services, Inc..





## ANALYTICAL RESULTS

Project: PERRYVILLE, IL  
Pace Project No.: 4019067

Sample: WQ(R)-12L		Lab ID: 4019067013	Collected: 06/24/09 13:15	Received: 06/24/09 21:16	Matrix: Water			
Parameters	Results	Units	Report Limit	DF	Prepared	Analyzed	CAS No.	Qual
<b>8260 MSV UST</b>		Analytical Method: EPA 8260						
o-Xylene	ND	ug/L	1.0	1		06/25/09 11:41	95-47-6	
Dibromofluoromethane (S)	95	%	70-130	1		06/25/09 11:41	1868-53-7	
Toluene-d8 (S)	99	%	70-130	1		06/25/09 11:41	2037-26-5	
4-Bromofluorobenzene (S)	97	%	70-130	1		06/25/09 11:41	460-00-4	

Sample: WQ(R)-12R		Lab ID: 4019067014	Collected: 06/24/09 13:07	Received: 06/24/09 21:16	Matrix: Water			
Parameters	Results	Units	Report Limit	DF	Prepared	Analyzed	CAS No.	Qual
<b>Gasoline Range Organics</b>		Analytical Method: EPA 5030/8015 Mod.						
TPH (C06-C10)	ND	ug/L	100	1		06/25/09 10:11		
<b>8260 MSV UST</b>		Analytical Method: EPA 8260						
Benzene	ND	ug/L	1.0	1		06/25/09 12:04	71-43-2	
Ethylbenzene	ND	ug/L	1.0	1		06/25/09 12:04	100-41-4	
Toluene	ND	ug/L	1.0	1		06/25/09 12:04	108-88-3	
Xylene (Total)	ND	ug/L	3.0	1		06/25/09 12:04	1330-20-7	
m&p-Xylene	ND	ug/L	2.0	1		06/25/09 12:04	1330-20-7	
o-Xylene	ND	ug/L	1.0	1		06/25/09 12:04	95-47-6	
Dibromofluoromethane (S)	97	%	70-130	1		06/25/09 12:04	1868-53-7	
Toluene-d8 (S)	101	%	70-130	1		06/25/09 12:04	2037-26-5	
4-Bromofluorobenzene (S)	93	%	70-130	1		06/25/09 12:04	460-00-4	

Sample: WQ(R)-13L		Lab ID: 4019067015	Collected: 06/24/09 13:22	Received: 06/24/09 21:16	Matrix: Water			
Parameters	Results	Units	Report Limit	DF	Prepared	Analyzed	CAS No.	Qual
<b>Gasoline Range Organics</b>		Analytical Method: EPA 5030/8015 Mod.						
TPH (C06-C10)	ND	ug/L	100	1		06/25/09 10:37		
<b>8260 MSV UST</b>		Analytical Method: EPA 8260						
Benzene	ND	ug/L	1.0	1		06/25/09 09:42	71-43-2	
Ethylbenzene	ND	ug/L	1.0	1		06/25/09 09:42	100-41-4	
Toluene	ND	ug/L	1.0	1		06/25/09 09:42	108-88-3	
Xylene (Total)	ND	ug/L	3.0	1		06/25/09 09:42	1330-20-7	
m&p-Xylene	ND	ug/L	2.0	1		06/25/09 09:42	1330-20-7	
o-Xylene	ND	ug/L	1.0	1		06/25/09 09:42	95-47-6	
Dibromofluoromethane (S)	95	%	70-130	1		06/25/09 09:42	1868-53-7	
Toluene-d8 (S)	104	%	70-130	1		06/25/09 09:42	2037-26-5	
4-Bromofluorobenzene (S)	94	%	70-130	1		06/25/09 09:42	460-00-4	

## ANALYTICAL RESULTS

Project: PERRYVILLE, IL  
Pace Project No.: 4019067

Sample: WQ(R)-13R		Lab ID: 4019067016		Collected: 06/24/09 13:30		Received: 06/24/09 21:16		Matrix: Water	
Parameters	Results	Units	Report Limit	DF	Prepared	Analyzed	CAS No.	Qual	
Gasoline Range Organics		Analytical Method: EPA 5030/8015 Mod.							
TPH (C06-C10)	ND ug/L		100	1		06/25/09 11:03			
8260 MSV UST		Analytical Method: EPA 8260							
Benzene	ND ug/L		1.0	1		06/25/09 12:28	71-43-2		
Ethylbenzene	ND ug/L		1.0	1		06/25/09 12:28	100-41-4		
Toluene	ND ug/L		1.0	1		06/25/09 12:28	108-88-3		
Xylene (Total)	ND ug/L		3.0	1		06/25/09 12:28	1330-20-7		
m&p-Xylene	ND ug/L		2.0	1		06/25/09 12:28	1330-20-7		
o-Xylene	ND ug/L		1.0	1		06/25/09 12:28	95-47-6		
Dibromofluoromethane (S)	96 %		70-130	1		06/25/09 12:28	1868-53-7		
Toluene-d8 (S)	102 %		70-130	1		06/25/09 12:28	2037-26-5		
4-Bromofluorobenzene (S)	96 %		70-130	1		06/25/09 12:28	460-00-4		

Sample: TRIP BLANK		Lab ID: 4019067017		Collected: 06/24/09 00:00		Received: 06/24/09 21:16		Matrix: Water	
Parameters		Results	Units	Report Limit	DF	Prepared	Analyzed	CAS No.	Qual
8260 MSV UST		Analytical Method: EPA 8260							
Benzene	ND ug/L		1.0	1		06/25/09 10:05	71-43-2		
Ethylbenzene	ND ug/L		1.0	1		06/25/09 10:05	100-41-4		
Toluene	ND ug/L		1.0	1		06/25/09 10:05	108-88-3		
Xylene (Total)	ND ug/L		3.0	1		06/25/09 10:05	1330-20-7		
m&p-Xylene	ND ug/L		2.0	1		06/25/09 10:05	1330-20-7		
o-Xylene	ND ug/L		1.0	1		06/25/09 10:05	95-47-6		
Dibromofluoromethane (S)	96 %		70-130	1		06/25/09 10:05	1868-53-7		
Toluene-d8 (S)	99 %		70-130	1		06/25/09 10:05	2037-26-5		
4-Bromofluorobenzene (S)	93 %		70-130	1		06/25/09 10:05	460-00-4		



## QUALITY CONTROL DATA

Project: PERRYVILLE, IL

Pace Project No.: 4019067

QC Batch:	GCV/3587	Analysis Method:	EPA 5030/8015 Mod.
QC Batch Method:	EPA 5030/8015 Mod.	Analysis Description:	Gasoline Range Organics
Associated Lab Samples:	4019067001, 4019067002, 4019067003, 4019067004, 4019067005, 4019067006, 4019067007, 4019067008		

METHOD BLANK:	174509	Matrix:	Water
Associated Lab Samples:	4019067001, 4019067002, 4019067003, 4019067004, 4019067005, 4019067006, 4019067007, 4019067008		

Parameter	Units	Blank Result	Reporting Limit	Analyzed	Qualifiers
TPH (C06-C10)	ug/L	ND	100	06/25/09 05:42	

LABORATORY CONTROL SAMPLE & LCSD:		174510 174511									
Parameter	Units	Spike Conc.	LCS Result	LCSD Result	LCS % Rec	LCSD % Rec	% Rec Limits	RPD	Max RPD	Qualifiers	
TPH (C06-C10)	ug/L	1000	1040	1030	104	103	80-120	.3	20		

MATRIX SPIKE & MATRIX SPIKE DUPLICATE:		174515 174516										
Parameter	Units	4019067003 Result	MS Spike Conc.	MSD Spike Conc.	MS Result	MSD Result	MS % Rec	MSD % Rec	% Rec Limits	RPD	Max RPD	Qual
TPH (C06-C10)	ug/L	ND	1000	1000	1070	1080	107	108	63-142	.4	23	

## QUALITY CONTROL DATA

Project: PERRYVILLE, IL

Pace Project No.: 4019067

QC Batch: GCV/3588 Analysis Method: EPA 5030/8015 Mod.  
QC Batch Method: EPA 5030/8015 Mod. Analysis Description: Gasoline Range Organics  
Associated Lab Samples: 4019067009, 4019067010, 4019067011, 4019067012, 4019067013, 4019067014, 4019067015, 4019067016

METHOD BLANK: 174512 Matrix: Water  
Associated Lab Samples: 4019067009, 4019067010, 4019067011, 4019067012, 4019067013, 4019067014, 4019067015, 4019067016

Parameter	Units	Blank Result	Reporting Limit	Analyzed	Qualifiers
TPH (C06-C10)	ug/L	ND	100	06/25/09 05:54	

LABORATORY CONTROL SAMPLE & LCSD: 174513		174514								
Parameter	Units	Spike Conc.	LCS Result	LCSD Result	LCS % Rec	LCSD % Rec	% Rec Limits	RPD	Max RPD	Qualifiers
TPH (C06-C10)	ug/L	1000	1000	1000	100	100	80-120	.05	20	

MATRIX SPIKE & MATRIX SPIKE DUPLICATE: 174517					174518							
Parameter	Units	4019067013 Result	MS Spike Conc.	MSD Spike Conc.	MS Result	MSD Result	MS % Rec	MSD % Rec	% Rec Limits	RPD	Max RPD	Qual
TPH (C06-C10)	ug/L	ND	1000	1000	1010	1030	97	98	63-142	2	23	



## QUALITY CONTROL DATA

Project: PERRYVILLE, IL

Pace Project No.: 4019067

QC Batch:	MSV/4824	Analysis Method:	EPA 8260
QC Batch Method:	EPA 8260	Analysis Description:	8260 MSV UST-WATER
Associated Lab Samples:	4019067001, 4019067002, 4019067003, 4019067004, 4019067005, 4019067006, 4019067007, 4019067008, 4019067009		

METHOD BLANK: 174527 Matrix: Water

Associated Lab Samples: 4019067001, 4019067002, 4019067003, 4019067004, 4019067005, 4019067006, 4019067007, 4019067008, 4019067009

Parameter	Units	Blank Result	Reporting Limit	Analyzed	Qualifiers
Benzene	ug/L	ND	1.0	06/25/09 06:24	
Ethylbenzene	ug/L	ND	1.0	06/25/09 06:24	
m&p-Xylene	ug/L	ND	2.0	06/25/09 06:24	
o-Xylene	ug/L	ND	1.0	06/25/09 06:24	
Toluene	ug/L	ND	1.0	06/25/09 06:24	
Xylene (Total)	ug/L	ND	3.0	06/25/09 06:24	
4-Bromofluorobenzene (S)	%	94	70-130	06/25/09 06:24	
Dibromofluoromethane (S)	%	84	70-130	06/25/09 06:24	
Toluene-d8 (S)	%	97	70-130	06/25/09 06:24	

LABORATORY CONTROL SAMPLE & LCSD: 174528

174529

Parameter	Units	Spike Conc.	LCS Result	LCSD Result	LCS % Rec	LCSD % Rec	% Rec Limits	RPD	Max RPD	Qualifiers
Benzene	ug/L	50	49.9	50.0	100	100	70-131	.3	20	
Ethylbenzene	ug/L	50	53.7	54.2	107	108	70-130	1	20	
m&p-Xylene	ug/L	100	101	101	101	101	70-130	.2	20	
o-Xylene	ug/L	50	49.2	48.9	98	98	70-130	.6	20	
Toluene	ug/L	50	52.2	52.7	104	105	70-130	.9	20	
Xylene (Total)	ug/L	150	150	150	100	100	70-130	.03	20	
4-Bromofluorobenzene (S)	%				98	96	70-130			
Dibromofluoromethane (S)	%				87	88	70-130			
Toluene-d8 (S)	%				99	98	70-130			

MATRIX SPIKE & MATRIX SPIKE DUPLICATE: 174533

174534

Parameter	Units	4019067001 Result	MS Spike Conc.	MSD Spike Conc.	MS Result	MSD Result	MS % Rec	MSD % Rec	% Rec Limits	RPD	Max RPD	Qual
Benzene	ug/L	ND	50	50	50.7	49.7	101	99	69-131	2	20	
Ethylbenzene	ug/L	ND	50	50	54.3	54.4	109	109	70-130	.2	20	
m&p-Xylene	ug/L	ND	100	100	101	102	101	102	70-130	.5	20	
o-Xylene	ug/L	ND	50	50	49.0	49.0	98	98	70-130	.06	20	
Toluene	ug/L	ND	50	50	52.9	52.5	106	105	70-130	.7	20	
Xylene (Total)	ug/L	ND	150	150	150	151	100	100	70-130	.3	20	
4-Bromofluorobenzene (S)	%						96	97	70-130			
Dibromofluoromethane (S)	%						89	87	70-130			
Toluene-d8 (S)	%						97	98	70-130			

## QUALITY CONTROL DATA

Project: PERRYVILLE, IL

Pace Project No.: 4019067

QC Batch:	MSV/4825	Analysis Method:	EPA 8260
QC Batch Method:	EPA 8260	Analysis Description:	8260 MSV UST-WATER
Associated Lab Samples:	4019067010, 4019067011, 4019067012, 4019067013, 4019067014, 4019067015, 4019067016, 4019067017		

METHOD BLANK:	174530	Matrix:	Water
Associated Lab Samples:	4019067010, 4019067011, 4019067012, 4019067013, 4019067014, 4019067015, 4019067016, 4019067017		

Parameter	Units	Blank Result	Reporting Limit	Analyzed	Qualifiers
Benzene	ug/L	ND	1.0	06/25/09 07:41	
Ethylbenzene	ug/L	ND	1.0	06/25/09 07:41	
m&p-Xylene	ug/L	ND	2.0	06/25/09 07:41	
o-Xylene	ug/L	ND	1.0	06/25/09 07:41	
Toluene	ug/L	ND	1.0	06/25/09 07:41	
Xylene (Total)	ug/L	ND	3.0	06/25/09 07:41	
4-Bromofluorobenzene (S)	%	97	70-130	06/25/09 07:41	
Dibromofluoromethane (S)	%	94	70-130	06/25/09 07:41	
Toluene-d8 (S)	%	103	70-130	06/25/09 07:41	

LABORATORY CONTROL SAMPLE & LCSD:		174531	174532							
Parameter	Units	Spike Conc.	LCS Result	LCSD Result	LCS % Rec	LCSD % Rec	% Rec Limits	RPD	Max RPD	Qualifiers
Benzene	ug/L	50	44.9	47.2	90	94	70-131	5	20	
Ethylbenzene	ug/L	50	50.2	50.7	100	101	70-130	1	20	
m&p-Xylene	ug/L	100	102	103	102	103	70-130	.9	20	
o-Xylene	ug/L	50	49.2	49.4	98	99	70-130	.4	20	
Toluene	ug/L	50	48.6	48.7	97	97	70-130	.3	20	
Xylene (Total)	ug/L	150	151	152	101	102	70-130	.8	20	
4-Bromofluorobenzene (S)	%				97	96	70-130			
Dibromofluoromethane (S)	%				96	100	70-130			
Toluene-d8 (S)	%				101	100	70-130			

MATRIX SPIKE & MATRIX SPIKE DUPLICATE:			174647		174648							
Parameter	Units	4019067015	MS	MSD	MS	MSD	MS	MSD	% Rec	Max	Qual	
		Result	Spike	Spike								Result
Benzene	ug/L	ND	50	50	47.3	46.5	95	93	69-131	2	20	
Ethylbenzene	ug/L	ND	50	50	51.2	49.4	102	99	70-130	3	20	
m&p-Xylene	ug/L	ND	100	100	101	102	101	102	70-130	.5	20	
o-Xylene	ug/L	ND	50	50	49.0	47.9	98	96	70-130	2	20	
Toluene	ug/L	ND	50	50	49.2	48.3	98	96	70-130	2	20	
Xylene (Total)	ug/L	ND	150	150	150	150	100	100	70-130	.4	20	
4-Bromofluorobenzene (S)	%						96	95	70-130			
Dibromofluoromethane (S)	%						99	98	70-130			
Toluene-d8 (S)	%						105	99	70-130			



## QUALIFIERS

Project: PERRYVILLE, IL

Pace Project No.: 4019067

---

### DEFINITIONS

DF - Dilution Factor, if reported, represents the factor applied to the reported data due to changes in sample preparation, dilution of the sample aliquot, or moisture content.

ND - Not Detected at or above adjusted reporting limit.

J - Estimated concentration above the adjusted method detection limit and below the adjusted reporting limit.

MDL - Adjusted Method Detection Limit.

S - Surrogate

1,2-Diphenylhydrazine (8270 listed analyte) decomposes to Azobenzene.

Consistent with EPA guidelines, unrounded data are displayed and have been used to calculate % recovery and RPD values.

LCS(D) - Laboratory Control Sample (Duplicate)

MS(D) - Matrix Spike (Duplicate)

DUP - Sample Duplicate

RPD - Relative Percent Difference

NC - Not Calculable.

Pace Analytical is NELAP accredited. Contact your Pace PM for the current list of accredited analytes.

U - Indicates the compound was analyzed for, but not detected.

### LABORATORIES

PASI-G Pace Analytical Services - Green Bay

## QUALITY CONTROL DATA CROSS REFERENCE TABLE

Project: PERRYVILLE, IL

Pace Project No.: 4019067

Lab ID	Sample ID	QC Batch Method	QC Batch	Analytical Method	Analytical Batch
4019067001	WQ(R)-6L	EPA 5030/8015 Mod.	GCV/3587		
4019067002	WQ(R)-6R	EPA 5030/8015 Mod.	GCV/3587		
4019067003	WQ(R)-7L	EPA 5030/8015 Mod.	GCV/3587		
4019067004	WQ(R)-7R	EPA 5030/8015 Mod.	GCV/3587		
4019067005	WQ(R)-8L	EPA 5030/8015 Mod.	GCV/3587		
4019067006	WQ(R)-8R	EPA 5030/8015 Mod.	GCV/3587		
4019067007	WQ(R)-9L	EPA 5030/8015 Mod.	GCV/3587		
4019067008	WQ(R)-9R	EPA 5030/8015 Mod.	GCV/3587		
4019067009	WQ(R)-10L	EPA 5030/8015 Mod.	GCV/3588		
4019067010	WQ(R)-10R	EPA 5030/8015 Mod.	GCV/3588		
4019067011	WQ(R)-11L	EPA 5030/8015 Mod.	GCV/3588		
4019067012	WQ(R)-11R	EPA 5030/8015 Mod.	GCV/3588		
4019067013	WQ(R)-12L	EPA 5030/8015 Mod.	GCV/3588		
4019067014	WQ(R)-12R	EPA 5030/8015 Mod.	GCV/3588		
4019067015	WQ(R)-13L	EPA 5030/8015 Mod.	GCV/3588		
4019067016	WQ(R)-13R	EPA 5030/8015 Mod.	GCV/3588		
4019067001	WQ(R)-6L	EPA 8260	MSV/4824		
4019067002	WQ(R)-6R	EPA 8260	MSV/4824		
4019067003	WQ(R)-7L	EPA 8260	MSV/4824		
4019067004	WQ(R)-7R	EPA 8260	MSV/4824		
4019067005	WQ(R)-8L	EPA 8260	MSV/4824		
4019067006	WQ(R)-8R	EPA 8260	MSV/4824		
4019067007	WQ(R)-9L	EPA 8260	MSV/4824		
4019067008	WQ(R)-9R	EPA 8260	MSV/4824		
4019067009	WQ(R)-10L	EPA 8260	MSV/4824		
4019067010	WQ(R)-10R	EPA 8260	MSV/4825		
4019067011	WQ(R)-11L	EPA 8260	MSV/4825		
4019067012	WQ(R)-11R	EPA 8260	MSV/4825		
4019067013	WQ(R)-12L	EPA 8260	MSV/4825		
4019067014	WQ(R)-12R	EPA 8260	MSV/4825		
4019067015	WQ(R)-13L	EPA 8260	MSV/4825		
4019067016	WQ(R)-13R	EPA 8260	MSV/4825		
4019067017	TRIP BLANK	EPA 8260	MSV/4825		



June 25, 2009

Devin Sprinkle  
Chicago Central & Pacific Railroad  
17641 South Ashland Ave  
Homewood, IL 60430

RE: Project: PERRYVILLE, IL  
Pace Project No.: 4019069

Dear Devin Sprinkle:

Enclosed are the analytical results for sample(s) received by the laboratory on June 25, 2009. The results relate only to the samples included in this report. Results reported herein conform to the most current NELAC standards, where applicable, unless otherwise narrated in the body of the report.

If you have any questions concerning this report, please feel free to contact me.

Sincerely,



Brian Basten for  
Laurie Woelfel  
laurie.woelfel@pacelabs.com  
Project Manager

Enclosures

## REPORT OF LABORATORY ANALYSIS

Page 1 of 14

This report shall not be reproduced, except in full,  
without the written consent of Pace Analytical Services, Inc..



## CERTIFICATIONS

Project: PERRYVILLE, IL

Pace Project No.: 4019069

---

### Green Bay Certification IDs

Wisconsin DATCP Certification #: 105-444  
Wisconsin DATCP Certification #: 105-444  
Wisconsin Certification #: 405132750  
Wisconsin Certification #: 405132750  
South Carolina Certification #: 83006001  
South Carolina Certification #: 83006001  
North Dakota Certification #: R-200  
North Dakota Certification #: R-150  
North Carolina Certification #: 503  
North Carolina Certification #: 503  
New York Certification #: 11887

New York Certification #: 11888  
Minnesota Certification #: 055-999-334  
Minnesota Certification #: 055-999-334  
Louisiana Certification #: 04169  
Louisiana Certification #: 04168  
Kentucky Certification #: 83  
Kentucky Certification #: 82  
Illinois Certification #: 200051  
Illinois Certification #: 200050  
Florida/NELAP Certification #: E87951  
Florida/NELAP Certification #: E87948

---

## REPORT OF LABORATORY ANALYSIS

Page 2 of 14

This report shall not be reproduced, except in full,  
without the written consent of Pace Analytical Services, Inc..





## SAMPLE SUMMARY

Project: PERRYVILLE, IL

Pace Project No.: 4019069

Lab ID	Sample ID	Matrix	Date Collected	Date Received
4019069001	5965 WHITECLIFF	Water	06/24/09 15:30	06/25/09 07:55
4019069002	5877 HILLSBROUGH RD	Water	06/24/09 16:00	06/25/09 07:55
4019069003	4480 CLOVERCREST	Water	06/24/09 17:32	06/25/09 07:55
4019069004	5971 HILLSBROUGH	Water	06/24/09 16:20	06/25/09 07:55
4019069005	5949 HILLSBROUGH CIR.	Water	06/24/09 15:40	06/25/09 07:55
4019069006	4466 BROOKDALE	Water	06/24/09 17:10	06/25/09 07:55
4019069007	3496 S. MULFORD	Water	06/24/09 16:40	06/25/09 07:55

## REPORT OF LABORATORY ANALYSIS

Page 3 of 14

This report shall not be reproduced, except in full,  
without the written consent of Pace Analytical Services, Inc..

## SAMPLE ANALYTE COUNT

Project: PERRYVILLE, IL

Pace Project No.: 4019069

Lab ID	Sample ID	Method	Analysts	Analytes Reported	Laboratory
4019069001	5965 WHITECLIFF	EPA 5030/8015 Mod.	PMS	1	PASI-G
		EPA 8260	HNW	9	PASI-G
4019069002	5877 HILLSBROUGH RD	EPA 5030/8015 Mod.	PMS	1	PASI-G
		EPA 8260	HNW	9	PASI-G
4019069003	4480 CLOVERCREST	EPA 5030/8015 Mod.	PMS	1	PASI-G
		EPA 8260	HNW	9	PASI-G
4019069004	5971 HILLSBROUGH	EPA 5030/8015 Mod.	PMS	1	PASI-G
		EPA 8260	HNW	9	PASI-G
4019069005	5949 HILLSBROUGH CIR.	EPA 5030/8015 Mod.	PMS	1	PASI-G
		EPA 8260	HNW	9	PASI-G
4019069006	4466 BROOKDALE	EPA 5030/8015 Mod.	PMS	1	PASI-G
		EPA 8260	HNW	9	PASI-G
4019069007	3496 S. MULFORD	EPA 5030/8015 Mod.	PMS	1	PASI-G
		EPA 8260	HNW	9	PASI-G

## REPORT OF LABORATORY ANALYSIS

Page 4 of 14

This report shall not be reproduced, except in full,  
without the written consent of Pace Analytical Services, Inc..



## PROJECT NARRATIVE

Project: PERRYVILLE, IL

Pace Project No.: 4019069

---

**Method:** EPA 5030/8015 Mod.

**Description:** Gasoline Range Organics

**Client:** Chicago Central & Pacific Railroad

**Date:** June 25, 2009

**General Information:**

7 samples were analyzed for EPA 5030/8015 Mod.. All samples were received in acceptable condition with any exceptions noted below.

**Hold Time:**

The samples were analyzed within the method required hold times with any exceptions noted below.

**Initial Calibrations (including MS Tune as applicable):**

All criteria were within method requirements with any exceptions noted below.

**Continuing Calibration:**

All criteria were within method requirements with any exceptions noted below.

**Internal Standards:**

All internal standards were within QC limits with any exceptions noted below.

**Surrogates:**

All surrogates were within QC limits with any exceptions noted below.

**Method Blank:**

All analytes were below the report limit in the method blank with any exceptions noted below.

**Laboratory Control Spike:**

All laboratory control spike compounds were within QC limits with any exceptions noted below.

**Matrix Spikes:**

All percent recoveries and relative percent differences (RPDs) were within acceptance criteria with any exceptions noted below.

**Duplicate Sample:**

All duplicate sample results were within method acceptance criteria with any exceptions noted below.

**Additional Comments:**

## REPORT OF LABORATORY ANALYSIS

Page 5 of 14

This report shall not be reproduced, except in full,  
without the written consent of Pace Analytical Services, Inc..



## PROJECT NARRATIVE

Project: PERRYVILLE, IL

Pace Project No.: 4019069

---

**Method:** EPA 8260

**Description:** 8260 MSV UST

**Client:** Chicago Central & Pacific Railroad

**Date:** June 25, 2009

**General Information:**

7 samples were analyzed for EPA 8260. All samples were received in acceptable condition with any exceptions noted below.

**Hold Time:**

The samples were analyzed within the method required hold times with any exceptions noted below.

**Initial Calibrations (including MS Tune as applicable):**

All criteria were within method requirements with any exceptions noted below.

**Continuing Calibration:**

All criteria were within method requirements with any exceptions noted below.

**Internal Standards:**

All internal standards were within QC limits with any exceptions noted below.

**Surrogates:**

All surrogates were within QC limits with any exceptions noted below.

**Method Blank:**

All analytes were below the report limit in the method blank with any exceptions noted below.

**Laboratory Control Spike:**

All laboratory control spike compounds were within QC limits with any exceptions noted below.

**Matrix Spikes:**

All percent recoveries and relative percent differences (RPDs) were within acceptance criteria with any exceptions noted below.

**Duplicate Sample:**

All duplicate sample results were within method acceptance criteria with any exceptions noted below.

**Additional Comments:**

This data package has been reviewed for quality and completeness and is approved for release.

## REPORT OF LABORATORY ANALYSIS

Page 6 of 14

This report shall not be reproduced, except in full,  
without the written consent of Pace Analytical Services, Inc..



## ANALYTICAL RESULTS

Project: PERRYVILLE, IL  
Pace Project No.: 4019069

<b>Sample: 5965 WHITECLIFF</b>		<b>Lab ID: 4019069001</b>	Collected: 06/24/09 15:30		Received: 06/25/09 07:55		Matrix: Water	
Parameters	Results	Units	Report Limit	DF	Prepared	Analyzed	CAS No.	Qual
<b>Gasoline Range Organics</b>		Analytical Method: EPA 5030/8015 Mod.						
TPH (C06-C10)	ND ug/L		100	1		06/25/09 11:41		
<b>8260 MSV UST</b>		Analytical Method: EPA 8260						
Benzene	ND ug/L		1.0	1		06/25/09 09:53	71-43-2	
Ethylbenzene	ND ug/L		1.0	1		06/25/09 09:53	100-41-4	
Toluene	ND ug/L		1.0	1		06/25/09 09:53	108-88-3	
Xylene (Total)	ND ug/L		3.0	1		06/25/09 09:53	1330-20-7	
m&p-Xylene	ND ug/L		2.0	1		06/25/09 09:53	1330-20-7	
o-Xylene	ND ug/L		1.0	1		06/25/09 09:53	95-47-6	
Dibromofluoromethane (S)	99 %		70-130	1		06/25/09 09:53	1868-53-7	
Toluene-d8 (S)	101 %		70-130	1		06/25/09 09:53	2037-26-5	
4-Bromofluorobenzene (S)	97 %		70-130	1		06/25/09 09:53	460-00-4	

<b>Sample: 5877 HILLSBROUGH RD</b>		<b>Lab ID: 4019069002</b>	Collected: 06/24/09 16:00		Received: 06/25/09 07:55		Matrix: Water	
Parameters	Results	Units	Report Limit	DF	Prepared	Analyzed	CAS No.	Qual
<b>Gasoline Range Organics</b>		Analytical Method: EPA 5030/8015 Mod.						
TPH (C06-C10)	ND ug/L		100	1		06/25/09 12:07		
<b>8260 MSV UST</b>		Analytical Method: EPA 8260						
Benzene	ND ug/L		1.0	1		06/25/09 10:17	71-43-2	
Ethylbenzene	ND ug/L		1.0	1		06/25/09 10:17	100-41-4	
Toluene	ND ug/L		1.0	1		06/25/09 10:17	108-88-3	
Xylene (Total)	ND ug/L		3.0	1		06/25/09 10:17	1330-20-7	
m&p-Xylene	ND ug/L		2.0	1		06/25/09 10:17	1330-20-7	
o-Xylene	ND ug/L		1.0	1		06/25/09 10:17	95-47-6	
Dibromofluoromethane (S)	97 %		70-130	1		06/25/09 10:17	1868-53-7	
Toluene-d8 (S)	101 %		70-130	1		06/25/09 10:17	2037-26-5	
4-Bromofluorobenzene (S)	96 %		70-130	1		06/25/09 10:17	460-00-4	

<b>Sample: 4480 CLOVERCREST</b>		<b>Lab ID: 4019069003</b>	Collected: 06/24/09 17:32		Received: 06/25/09 07:55		Matrix: Water	
Parameters	Results	Units	Report Limit	DF	Prepared	Analyzed	CAS No.	Qual
<b>Gasoline Range Organics</b>		Analytical Method: EPA 5030/8015 Mod.						
TPH (C06-C10)	ND ug/L		100	1		06/25/09 12:33		
<b>8260 MSV UST</b>		Analytical Method: EPA 8260						
Benzene	ND ug/L		1.0	1		06/25/09 10:41	71-43-2	
Ethylbenzene	ND ug/L		1.0	1		06/25/09 10:41	100-41-4	
Toluene	ND ug/L		1.0	1		06/25/09 10:41	108-88-3	
Xylene (Total)	ND ug/L		3.0	1		06/25/09 10:41	1330-20-7	
m&p-Xylene	ND ug/L		2.0	1		06/25/09 10:41	1330-20-7	

Date: 06/25/2009 02:56 PM

## REPORT OF LABORATORY ANALYSIS

Page 7 of 14

This report shall not be reproduced, except in full,  
without the written consent of Pace Analytical Services, Inc..





## ANALYTICAL RESULTS

Project: PERRYVILLE, IL

Pace Project No.: 4019069

Sample: 4480 CLOVERCREST		Lab ID: 4019069003	Collected: 06/24/09 17:32	Received: 06/25/09 07:55	Matrix: Water			
Parameters	Results	Units	Report Limit	DF	Prepared	Analyzed	CAS No.	Qual
<b>8260 MSV UST</b>		Analytical Method: EPA 8260						
o-Xylene	ND	ug/L	1.0	1		06/25/09 10:41	95-47-6	
Dibromofluoromethane (S)	98	%	70-130	1		06/25/09 10:41	1868-53-7	
Toluene-d8 (S)	100	%	70-130	1		06/25/09 10:41	2037-26-5	
4-Bromofluorobenzene (S)	97	%	70-130	1		06/25/09 10:41	460-00-4	

Sample: 5971 HILLSBROUGH		Lab ID: 4019069004	Collected: 06/24/09 16:20	Received: 06/25/09 07:55	Matrix: Water			
Parameters	Results	Units	Report Limit	DF	Prepared	Analyzed	CAS No.	Qual
<b>Gasoline Range Organics</b>		Analytical Method: EPA 5030/8015 Mod.						
TPH (C06-C10)	ND	ug/L	100	1		06/25/09 12:58		
<b>8260 MSV UST</b>		Analytical Method: EPA 8260						
Benzene	ND	ug/L	1.0	1		06/25/09 11:04	71-43-2	
Ethylbenzene	ND	ug/L	1.0	1		06/25/09 11:04	100-41-4	
Toluene	ND	ug/L	1.0	1		06/25/09 11:04	108-88-3	
Xylene (Total)	ND	ug/L	3.0	1		06/25/09 11:04	1330-20-7	
m&p-Xylene	ND	ug/L	2.0	1		06/25/09 11:04	1330-20-7	
o-Xylene	ND	ug/L	1.0	1		06/25/09 11:04	95-47-6	
Dibromofluoromethane (S)	99	%	70-130	1		06/25/09 11:04	1868-53-7	
Toluene-d8 (S)	101	%	70-130	1		06/25/09 11:04	2037-26-5	
4-Bromofluorobenzene (S)	97	%	70-130	1		06/25/09 11:04	460-00-4	

Sample: 5949 HILLSBROUGH CIR.		Lab ID: 4019069005	Collected: 06/24/09 15:40	Received: 06/25/09 07:55	Matrix: Water			
Parameters	Results	Units	Report Limit	DF	Prepared	Analyzed	CAS No.	Qual
<b>Gasoline Range Organics</b>		Analytical Method: EPA 5030/8015 Mod.						
TPH (C06-C10)	ND	ug/L	100	1		06/25/09 11:54		
<b>8260 MSV UST</b>		Analytical Method: EPA 8260						
Benzene	ND	ug/L	1.0	1		06/25/09 11:28	71-43-2	
Ethylbenzene	ND	ug/L	1.0	1		06/25/09 11:28	100-41-4	
Toluene	ND	ug/L	1.0	1		06/25/09 11:28	108-88-3	
Xylene (Total)	ND	ug/L	3.0	1		06/25/09 11:28	1330-20-7	
m&p-Xylene	ND	ug/L	2.0	1		06/25/09 11:28	1330-20-7	
o-Xylene	ND	ug/L	1.0	1		06/25/09 11:28	95-47-6	
Dibromofluoromethane (S)	97	%	70-130	1		06/25/09 11:28	1868-53-7	
Toluene-d8 (S)	101	%	70-130	1		06/25/09 11:28	2037-26-5	
4-Bromofluorobenzene (S)	97	%	70-130	1		06/25/09 11:28	460-00-4	

## ANALYTICAL RESULTS

Project: PERRYVILLE, IL

Pace Project No.: 4019069

Sample: 4466 BROOKDALE		Lab ID: 4019069006	Collected: 06/24/09 17:10	Received: 06/25/09 07:55	Matrix: Water			
Parameters	Results	Units	Report Limit	DF	Prepared	Analyzed	CAS No.	Qual
<b>Gasoline Range Organics</b>		Analytical Method: EPA 5030/8015 Mod.						
TPH (C06-C10)	ND ug/L		100	1		06/25/09 12:20		
<b>8260 MSV UST</b>		Analytical Method: EPA 8260						
Benzene	ND ug/L		1.0	1		06/25/09 11:51	71-43-2	
Ethylbenzene	ND ug/L		1.0	1		06/25/09 11:51	100-41-4	
Toluene	ND ug/L		1.0	1		06/25/09 11:51	108-88-3	
Xylene (Total)	ND ug/L		3.0	1		06/25/09 11:51	1330-20-7	
m&p-Xylene	ND ug/L		2.0	1		06/25/09 11:51	1330-20-7	
o-Xylene	ND ug/L		1.0	1		06/25/09 11:51	95-47-6	
Dibromofluoromethane (S)	100 %		70-130	1		06/25/09 11:51	1868-53-7	
Toluene-d8 (S)	101 %		70-130	1		06/25/09 11:51	2037-26-5	
4-Bromofluorobenzene (S)	96 %		70-130	1		06/25/09 11:51	460-00-4	

Sample: 3496 S. MULFORD		Lab ID: 4019069007	Collected: 06/24/09 16:40	Received: 06/25/09 07:55	Matrix: Water			
Parameters	Results	Units	Report Limit	DF	Prepared	Analyzed	CAS No.	Qual
<b>Gasoline Range Organics</b>		Analytical Method: EPA 5030/8015 Mod.						
TPH (C06-C10)	ND ug/L		100	1		06/25/09 12:46		
<b>8260 MSV UST</b>		Analytical Method: EPA 8260						
Benzene	ND ug/L		1.0	1		06/25/09 12:15	71-43-2	
Ethylbenzene	ND ug/L		1.0	1		06/25/09 12:15	100-41-4	
Toluene	ND ug/L		1.0	1		06/25/09 12:15	108-88-3	
Xylene (Total)	ND ug/L		3.0	1		06/25/09 12:15	1330-20-7	
m&p-Xylene	ND ug/L		2.0	1		06/25/09 12:15	1330-20-7	
o-Xylene	ND ug/L		1.0	1		06/25/09 12:15	95-47-6	
Dibromofluoromethane (S)	99 %		70-130	1		06/25/09 12:15	1868-53-7	
Toluene-d8 (S)	102 %		70-130	1		06/25/09 12:15	2037-26-5	
4-Bromofluorobenzene (S)	97 %		70-130	1		06/25/09 12:15	460-00-4	

## QUALITY CONTROL DATA

Project: PERRYVILLE, IL

Pace Project No.: 4019069

QC Batch:	GCV/3587	Analysis Method:	EPA 5030/8015 Mod.
QC Batch Method:	EPA 5030/8015 Mod.	Analysis Description:	Gasoline Range Organics
Associated Lab Samples:	4019069001, 4019069002, 4019069003, 4019069004		

METHOD BLANK: 174509 Matrix: Water

Associated Lab Samples: 4019069001, 4019069002, 4019069003, 4019069004

Parameter	Units	Blank Result	Reporting Limit	Analyzed	Qualifiers
TPH (C06-C10)	ug/L	ND	100	06/25/09 05:42	

LABORATORY CONTROL SAMPLE & LCSD: 174510

174511

Parameter	Units	Spike Conc.	LCS Result	LCSD Result	LCS % Rec	LCSD % Rec	% Rec Limits	RPD	Max RPD	Qualifiers
TPH (C06-C10)	ug/L	1000	1040	1030	104	103	80-120	.3	20	

MATRIX SPIKE & MATRIX SPIKE DUPLICATE: 174515

174516

Parameter	Units	4019067003 Result	MS Spike Conc.	MSD Spike Conc.	MS Result	MSD Result	MS % Rec	MSD % Rec	% Rec Limits	RPD	Max RPD	Qual
TPH (C06-C10)	ug/L	ND	1000	1000	1070	1080	107	108	63-142	.4	23	



## QUALITY CONTROL DATA

Project: PERRYVILLE, IL

Pace Project No.: 4019069

QC Batch:	GCV/3588	Analysis Method:	EPA 5030/8015 Mod.
QC Batch Method:	EPA 5030/8015 Mod.	Analysis Description:	Gasoline Range Organics
Associated Lab Samples:	4019069005, 4019069006, 4019069007		

METHOD BLANK: 174512 Matrix: Water

Associated Lab Samples: 4019069005, 4019069006, 4019069007

Parameter	Units	Blank Result	Reporting Limit	Analyzed	Qualifiers
TPH (C06-C10)	ug/L	ND	100	06/25/09 05:54	

LABORATORY CONTROL SAMPLE & LCSD: 174513

174514

Parameter	Units	Spike Conc.	LCS Result	LCSD Result	LCS % Rec	LCSD % Rec	% Rec Limits	RPD	Max RPD	Qualifiers
TPH (C06-C10)	ug/L	1000	1000	1000	100	100	80-120	.05	20	

MATRIX SPIKE & MATRIX SPIKE DUPLICATE: 174517

174518

Parameter	Units	4019067013 Result	MS Spike Conc.	MSD Spike Conc.	MS Result	MSD Result	MS % Rec	MSD % Rec	% Rec Limits	RPD	Max RPD	Qual
TPH (C06-C10)	ug/L	ND	1000	1000	1010	1030	97	98	63-142	2	23	

## QUALITY CONTROL DATA

Project: PERRYVILLE, IL

Pace Project No.: 4019069

QC Batch: MSV/4827

Analysis Method: EPA 8260

QC Batch Method: EPA 8260

Analysis Description: 8260 MSV UST-WATER

Associated Lab Samples: 4019069001, 4019069002, 4019069003, 4019069004, 4019069005, 4019069006, 4019069007

METHOD BLANK: 174578

Matrix: Water

Associated Lab Samples: 4019069001, 4019069002, 4019069003, 4019069004, 4019069005, 4019069006, 4019069007

Parameter	Units	Blank Result	Reporting Limit	Analyzed	Qualifiers
Benzene	ug/L	ND	1.0	06/25/09 07:09	
Ethylbenzene	ug/L	ND	1.0	06/25/09 07:09	
m&p-Xylene	ug/L	ND	2.0	06/25/09 07:09	
o-Xylene	ug/L	ND	1.0	06/25/09 07:09	
Toluene	ug/L	ND	1.0	06/25/09 07:09	
Xylene (Total)	ug/L	ND	3.0	06/25/09 07:09	
4-Bromofluorobenzene (S)	%	96	70-130	06/25/09 07:09	
Dibromofluoromethane (S)	%	96	70-130	06/25/09 07:09	
Toluene-d8 (S)	%	101	70-130	06/25/09 07:09	

LABORATORY CONTROL SAMPLE & LCSD: 174579

174580

Parameter	Units	Spike Conc.	LCS Result	LCSD Result	LCS % Rec	LCSD % Rec	% Rec Limits	RPD	Max RPD	Qualifiers
Benzene	ug/L	50	47.8	46.6	96	93	70-131	2	20	
Ethylbenzene	ug/L	50	50.5	49.5	101	99	70-130	2	20	
m&p-Xylene	ug/L	100	100	98.8	100	99	70-130	2	20	
o-Xylene	ug/L	50	49.4	49.2	99	98	70-130	.3	20	
Toluene	ug/L	50	49.6	48.5	99	97	70-130	2	20	
Xylene (Total)	ug/L	150	150	148	100	99	70-130	1	20	
4-Bromofluorobenzene (S)	%				97	96	70-130			
Dibromofluoromethane (S)	%				99	98	70-130			
Toluene-d8 (S)	%				102	100	70-130			

## QUALIFIERS

Project: PERRYVILLE, IL

Pace Project No.: 4019069

---

### DEFINITIONS

DF - Dilution Factor, if reported, represents the factor applied to the reported data due to changes in sample preparation, dilution of the sample aliquot, or moisture content.

ND - Not Detected at or above adjusted reporting limit.

J - Estimated concentration above the adjusted method detection limit and below the adjusted reporting limit.

MDL - Adjusted Method Detection Limit.

S - Surrogate

1,2-Diphenylhydrazine (8270 listed analyte) decomposes to Azobenzene.

Consistent with EPA guidelines, unrounded data are displayed and have been used to calculate % recovery and RPD values.

LCS(D) - Laboratory Control Sample (Duplicate)

MS(D) - Matrix Spike (Duplicate)

DUP - Sample Duplicate

RPD - Relative Percent Difference

NC - Not Calculable.

Pace Analytical is NELAP accredited. Contact your Pace PM for the current list of accredited analytes.

U - Indicates the compound was analyzed for, but not detected.

### LABORATORIES

PASI-G Pace Analytical Services - Green Bay



## QUALITY CONTROL DATA CROSS REFERENCE TABLE

Project: PERRYVILLE, IL

Pace Project No.: 4019069

Lab ID	Sample ID	QC Batch Method	QC Batch	Analytical Method	Analytical Batch
4019069001	5965 WHITECLIFF	EPA 5030/8015 Mod.	GCV/3587		
4019069002	5877 HILLSBROUGH RD	EPA 5030/8015 Mod.	GCV/3587		
4019069003	4480 CLOVERCREST	EPA 5030/8015 Mod.	GCV/3587		
4019069004	5971 HILLSBROUGH	EPA 5030/8015 Mod.	GCV/3587		
4019069005	5949 HILLSBROUGH CIR.	EPA 5030/8015 Mod.	GCV/3588		
4019069006	4466 BROOKDALE	EPA 5030/8015 Mod.	GCV/3588		
4019069007	3496 S. MULFORD	EPA 5030/8015 Mod.	GCV/3588		
4019069001	5965 WHITECLIFF	EPA 8260	MSV/4827		
4019069002	5877 HILLSBROUGH RD	EPA 8260	MSV/4827		
4019069003	4480 CLOVERCREST	EPA 8260	MSV/4827		
4019069004	5971 HILLSBROUGH	EPA 8260	MSV/4827		
4019069005	5949 HILLSBROUGH CIR.	EPA 8260	MSV/4827		
4019069006	4466 BROOKDALE	EPA 8260	MSV/4827		
4019069007	3496 S. MULFORD	EPA 8260	MSV/4827		





Sample Location For Rock River - June 24, 2009

**Legend**

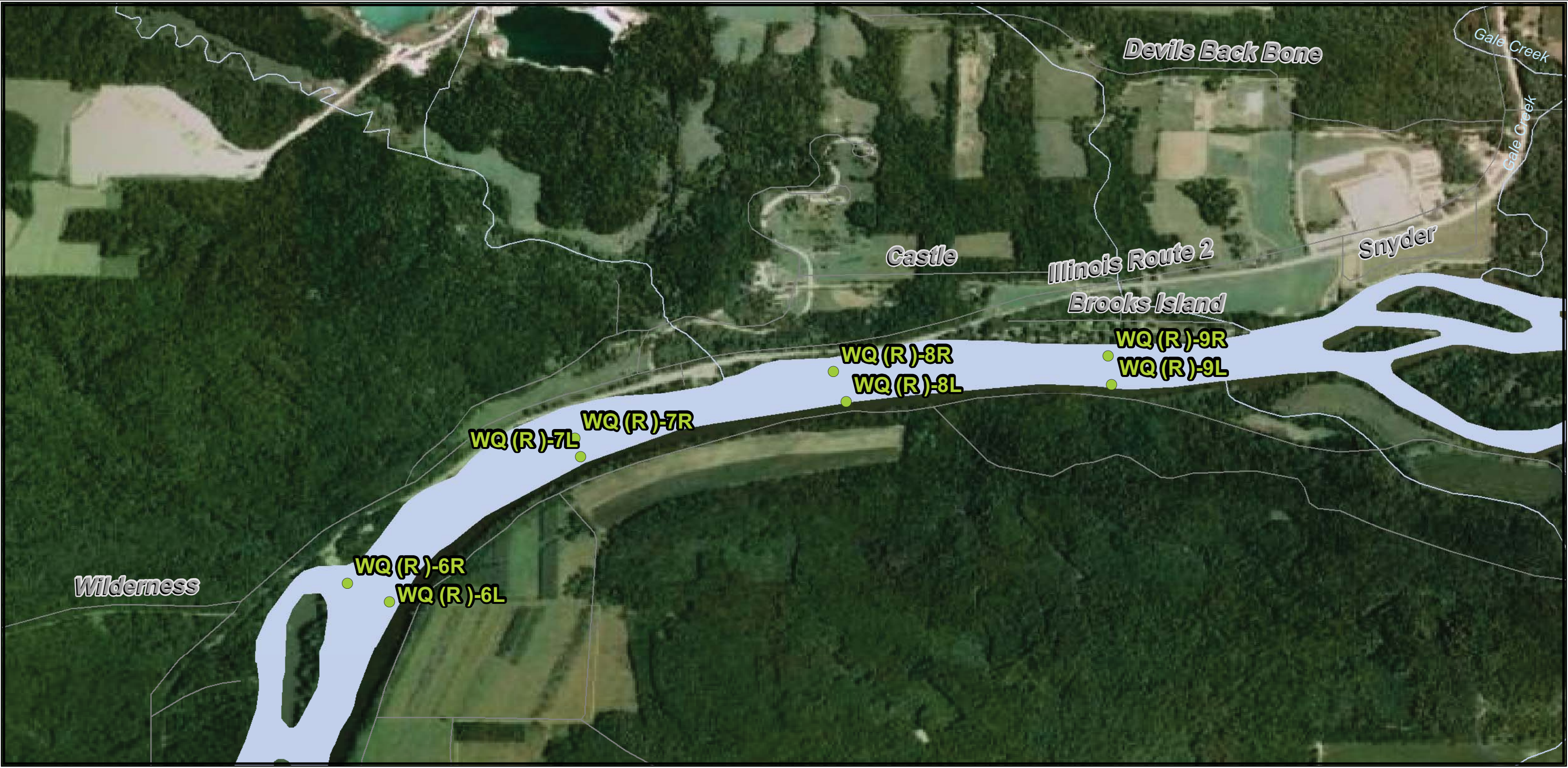
● Surface Water Samples

0 0.125 0.25 0.5 Miles



Center for Toxicology  
and Environmental Health





Sample Location For Rock River - June 24, 2009

**Legend**

● Surface Water Samples

0 0.1 0.2 0.4 Miles

N



Center for Toxicology  
and Environmental Health