

APPENDIX A

PHOTOGRAPHIC DOCUMENTATION

PHOTOGRAPH IDENTIFICATION SHEET

TDD No. 03-05-0004

Lens Type: Olympus C700 Digital

Site Name: Columbia American Plating

Photo No.	Designation	Date	By	Dir.	Description
1	Overhead	5/18/03	START-2	N	CAP site with labeled work areas.
2	decon	6/15/03	OSC	E	SSA: Decontamination area.
3	P4060003	4/6/01	DEQ	NE	Photo of SSA, including debris pile and unvegetated area.
4	P5160001	5/16/03	SMe	NW	SSA: Drum yard from SE corner of facility.
5	P5160002	5/16/03	SMe	SW	SSA: Drum yard and main entrance to facility.
6	P5160005	5/16/03	SMe	NW	MPA: Plating Line No. 1 (along west wall of main plating area) and power box.
7	P5170056	5/17/03	START-2	S	MPA: Southern half of Plating Line No. 1.
8	P5170059	5/17/03	START-2	N	MPA: Plating Line No. 1.
9	P5170061	5/17/03	START-2	N	MPA: One of the plating lines in the main plating area.
10	P5170035	5/17/03	START-2	N	MPA: Large acid vat plating line -- north end.
11	P5170037	5/17/03	START-2	E	MPA: Large plating vat.
12	P5170040	5/17/03	START-2	E	MPA: Large plating vat.
13	P5170046	5/17/03	START-2	--	MPA: Metal plate with electrical cables in plating area.
14	P5170038	5/17/03	START-2	--	MPA: Portion of main plating area.
15	P5170050	5/17/03	START-2	N	MPA: Electrical cabinet area in main plating area.
16	gold plating room	6/15/03	OSC	N	OA: Gold plating room.
17	P5170071	5/17/03	START-2	S	OA: Ventilation duct in gold plating room.
18	P5170069	5/17/03	START-2	N	OA: Silver plating room.
19	P5170010	5/17/03	START-2	S	OA: Beakers of chemicals on a desk in the office area.
20	P5170012	5/17/03	START-2	N	OA: Yellow flammables cabinet with chemicals.
21	P5170014	5/17/03	START-2	--	OA: Small container chemical storage on shelves.
22	reaction	6/19/03	OSC	--	OA: Reaction in container from laboratory area.
23	P5170018	5/17/03	START-2	--	OA: Small container chemical storage on/beneath work bench.
24	P5170068	5/17/03	START-2	--	OA: Small container chemical storage on blue shelving.
25	P5170001	5/17/03	START-2	--	BA: Debris inside facility/basement.
26	P5170003	5/17/03	START-2	E	BA: Debris inside facility/basement.
27	stalagmite crystal	6/18/03	OSC	Up	BA: Debris inside facility/basement.
28	P5170004	5/17/03	START-2	NE	BA: Surveying cyanide storage area.
29	P5170005	5/17/03	START-2	NE	BA: Cyanide storage area.
30	P5170007	5/17/03	START-2	SE	BA: Stockpiled 5-gallon containers in hallway.
31	P5170033	5/17/03	START-2	--	BA: Black 55-gallon drum of zinc solution.
32	P5170025	5/17/03	START-2	--	BA: Two boxes of Cadmium Brightener in cardboard boxes.
33	P5170027	5/17/03	START-2	--	BA: Five-gallon chemical containers on floor beneath metal shelves.
34	P5170006	5/17/03	START-2	E	BA: Chemical storage above control panel.
35	loading dock	6/12/03	OSC	SE	NSA: Loading dock area, note dry chemical storage under overhang.
36	P5160006	5/16/03	SMe	W	NSA: Loading dock at NE corner of facility.
37	P5160007	5/16/03	SMe	SE	WWTA: North side of facility (wastewater treatment plant located behind white wall).
38	P5160008	5/16/03	SMe	S	WWTA: Wastewater treatment plant.
39	P5160009	5/16/03	SMe	SW	NSA: North side of facility from adjacent property.
40	P5160012	5/16/03	LS	N	SSA: ERRS staging drums.
41	P4090023	5/27/03	START-2	W	MPA: Smaller containers staged in Main Plating Area.
42	P0001	5/18/03	START-2	E	WWTA: Sampling Tank No.0001 in Wastewater Treatment Area.
43	P4040008	5/18/03	START-2	SW	SSA: START-2 sampling drums.

PHOTOGRAPH IDENTIFICATION SHEET**TDD No. 03-05-0004****Lens Type: Olympus C700 Digital****Site Name: Columbia American Plating**

Photo No.	Designation	Date	By	Dir.	Description
44	P4160143	5/20/03	START-2	SW	SSA: START-2 hazard categorizing solution samples.
45	P6100002	6/10/03	RW	N	MPA: ERRS conducting compatibility tests on vats.
46	P6120003	6/12/03	SMe	E	SSA: START-2 monitoring scrubber during pumping operations.
47	P6050083	6/5/03	RW	N	MPA: ERRS pumping out Plating Tank No. 518.
48	P7080007	7/8/03	SM	N	SSA: Collecting vacuum truck sample.
49	P6120021	6/12/03	EM	NE	SSA: Orange-colored gas cloud over PSC vacuum truck.
50	P6120024	6/12/03	EM	NE	SSA: ERRS spraying down off-gas from PSC vacuum truck.
51	P6200011	6/20/03	AC	Down	WWTA: Sludge sample from Hazardous Waste Container No. F008 in WWTP Tank D0005.
52	catwalk	6/15/03	OSC	N	MPA: Remnants of catwalk between plating lines 1 and 2.
53	sludge beneath	6/16/03	OSC	N	MPA: Sludge and debris beneath plating line 2, Main Plating Area.
54	P1010004	12/31/99	DEQ	NE	MPA: Main Plating Area during vat removal.
55	P7010001	7/1/03	TM	N	MPA: START-2 collecting sample (03050745) from trough between Plating Lines No. 1 and No. 2.
56	P7090002	7/9/03	EM	NW	MPA: START-2 drilling boreholes in Main Plating Shop.
57	P7090001	7/9/03	EM	W	OA: START-2 preparing soil samples for XRF field screening.



Photo 1 CAP site with labeled work areas.

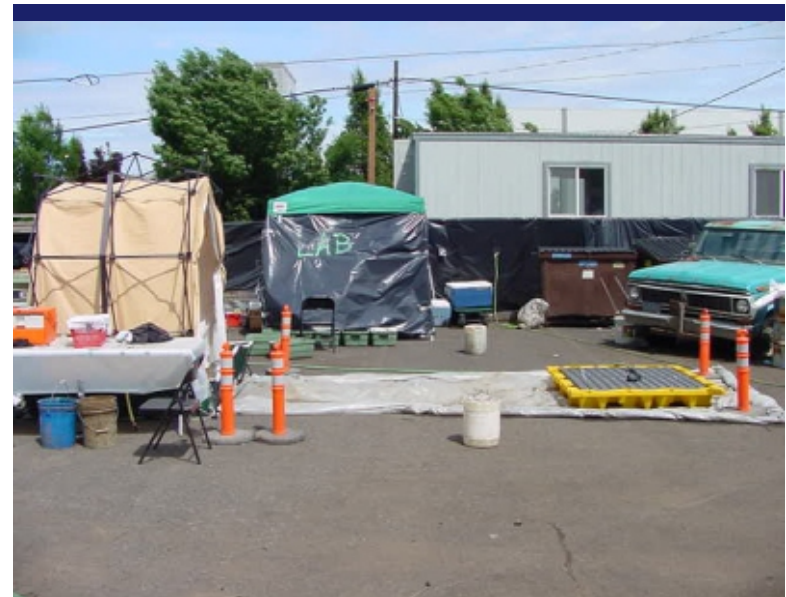


Photo 2 SSA: Decontamination area.



Photo 3 Photo of SSA, including debris pile and unvegetated area.



Photo 4 SSA: Drum yard from SE corner of facility.



Photo 5 SSA: Drum yard and main entrance to facility.



Photo 6 MPA: Plating Line No. 1 (along west wall of main plating area) and power box.



Photo 7 MPA: Southern half of Plating Line No. 1.



Photo 8 MPA: Plating Line No. 1.



Photo 9 MPA: One of the plating lines in the main plating area.



Photo 10 MPA: Large acid vat plating line – north end.



Photo 11 MPA: Large plating vat.



Photo 12 MPA: Large plating vat.



Photo 13 MPA: Metal plate with electrical cables in plating area.



Photo 14 MPA: Portion of main plating area.



Photo 15 MPA: Electrical cabinet area in main plating area.



Photo 16 OA: Gold plating room.



Photo 17 OA: Ventilation duct in gold plating room.



Photo 18 OA: Silver plating room.



Photo 19 OA: Beakers of chemicals on a desk in the office area.



Photo 20 OA: Yellow flammables cabinet with chemicals.



Photo 21 OA: Small container chemical storage on shelves.

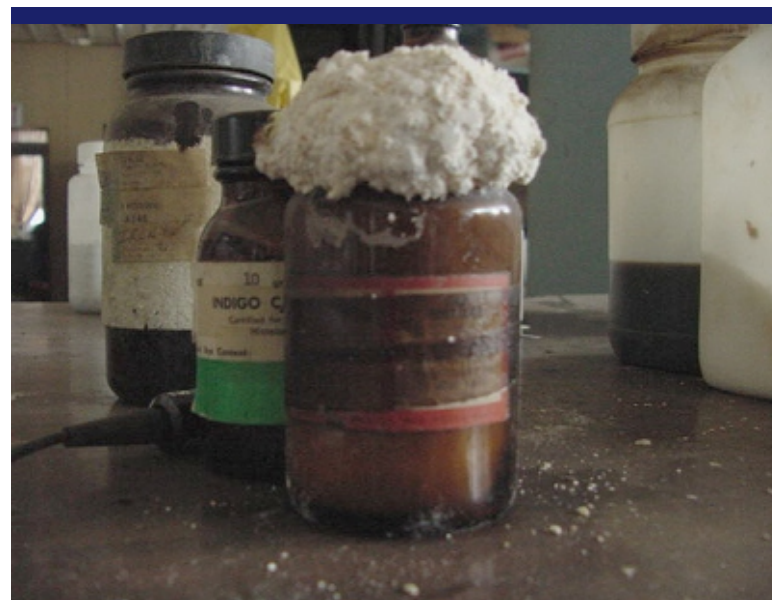


Photo 22 OA: Reaction in container from laboratory area.



Photo 23 OA: Small container chemical storage on/beneath work bench.



Photo 24 OA: Small container chemical storage on blue shelving.



Photo 25 BA: Debris inside facility/basement.



Photo 26 BA: Debris inside facility/basement.



Photo 27 BA: Debris inside facility/basement.



Photo 28 BA: Surveying cyanide storage area.



Photo 29 BA: Cyanide storage area.



Photo 30 BA: Stockpiled 5-gallon containers in hallway.



Photo 31 BA: Black 55-gallon drum of zinc solution.



Photo 32 BA: Two boxes of Cadmium Brightener in cardboard boxes.



Photo 33 BA: Five-gallon chemical containers on floor beneath metal shelves.



Photo 34 BA: Chemical storage above control panel.



Photo 35 NSA: Loading dock area, note dry chemical storage under overhang.



Photo 36 NSA: Loading dock at NE corner of facility.



Photo 37 WWTa: North side of facility (wastewater treatment plant located behind white wall).



Photo 38 WWTa: Wastewater treatment plant.



Photo 39 NSA: North side of facility from adjacent property.



Photo 40 SSA: ERRS staging drums.



Photo 41 MPA: Smaller containers staged in main plating area.



Photo 42 WWTA: Sampling Tank No. 0001 in wastewater treatment area.



Photo 43 SSA: START-2 sampling drums.



Photo 44 SSA: START-2 hazard categorizing solution samples.



Photo 45 MPA: ERRS conducting compatibility tests on vats.



Photo 46 SSA: START-2 monitoring scrubber during pumping operations.



Photo 47 MPA: ERRS pumping out Plating Tank No. 518.



Photo 48 SSA: Collecting vacuum truck sample.



Photo 49 SSA: Orange-colored gas cloud over PSC vacuum truck.



Photo 50 SSA: ERRS spraying down off-gas from PSC vacuum truck.



Photo 51 WWTA: Sludge sample from Hazardous Waste Container No. F008 in WWTP Tank D0005.



Photo 52 MPA: Remnants of catwalk between plating lines 1 and 2.



Photo 53 MPA: Sludge and debris beneath plating line 2, main plating area.



Photo 54 MPA: Main plating area during vat removal.



Photo 55 MPA: START-2 collecting sample (03050745) from trough between Plating Lines No. 1 and No. 2.



Photo 56 MPA: START-2 drilling boreholes in main plating shop.



Photo 57 OA: START-2 preparing soil samples for XRF field screening.
