

**U.S. EPA REMOVAL ACTION
AT THE
ECONOMY PLATING SITE
CHICAGO, COOK COUNTY, ILLINOIS
EMERGENCY CONTINGENCY PLAN
AUGUST 28, 2009**

The Economy Plating site (the Site) is located at 2348 through 2350 North Elston Avenue, Chicago, Cook County, Illinois. The Site is bordered by North Elston Avenue and commercial properties to the northeast, by North Winchester Street and residential properties to the southeast, and by residential properties to the southwest and northwest. The North Branch of the Chicago River is located less than 1,000 feet east of the Site (see Figure 1-1, attached).

The Site consists of a two-story brick building with an earthen floor basement and an asphalt-paved parking area is located southwest of the building. No power is currently supplied to the building. Economy Plating, Inc., a chrome plating facility, formerly operated at the Site. Economy Plating, Inc. ceased operations in 2003 and the building is currently vacant.

In May 2009, the Chicago Department of Environment (CDOE) referred the Site to the U.S. Environmental Protection Agency (U.S. EPA). On June 5, 2009, U.S. EPA and the Weston Solutions, Inc. Superfund Technical Assessment and Response Team (WESTON START) conducted a site assessment to investigate Site conditions that could pose an imminent threat to human health, human welfare, and the environment. A site reconnaissance and investigative waste sampling were conducted as part of the site assessment.

Description of Threat

Based on results of the site assessment conducted in June 2009, the Site poses an imminent and substantial threat to human health, human welfare, and the environment. The Site contains approximately 200 55-gallon drums, 85 miscellaneous containers (less than 55 gallons), and 12 vats. Several of the drums and containers are in poor condition (open and leaking). Yellow-staining is present on the interior and exterior walls of the Site building and yellow rain-water has been observed flowing off the roof of the Site building. Hazards identified at the Site include the following: wastes exhibiting characteristics of corrosive materials, wastes exhibiting characteristics of toxicity for arsenic and chromium, wastes containing cyanide, contaminants in uncontained areas (earthen-floor basement), disrepair of the Site building (roof, windows, and brick walls), evidence of vagrants and vandalism, and close proximity of residents to the Site.

On June 13 and 14, 2009, an emergency removal action was conducted at the Site to address the cyanide wastes. U.S. EPA Emergency Rapid Response Services (ERRS) contractor, Environmental Restoration, LLC (ER) overpacked the cyanide waste and transported it off-site for disposal. In addition, ERRS overpacked a 20-gallon stainless-steel keg containing nitric acid and a leaking 55-gallon steel drum. ERRS staged containers of chromic acid flakes and the two overpack drums in the basement of the Site building for future removal.

The figures in Attachment A depict the floor plans for each floor of the Site building, including the locations of hazardous and combustible materials.

Current Situation

U.S. EPA has initiated a removal action at the Site. Removal activities will begin at the Site on or about August 31, 2009. Work will be conducted Monday through Friday from 0800 to 1800 hours. Site activities are expected to last 3 months. A security firm will be hired to provide site security after work hours. Removal activities will consist of the following: establishing and delineating work zones

with caution tape and construction fencing (see Figure 1-2); removing and disposing of debris from the Site building to facilitate the removal action; securing, staging, sampling, and characterizing all Site wastes for disposal; overpacking Site wastes as necessary, and staging in a secured location for future disposal; and decontaminating pit walls, floors, and machinery. All characterized or identified hazardous substances and decontamination water will be transported off-site and disposed at a RCRA-approved disposal facility. Continuous air monitoring will be conducted to ensure workers safety and to verify that no off-site migration of chemicals is impacting the community.

Potential Response Events

The following protocols for the exclusion zones provide necessary guidance for the following potential response events:

- Vandalism / Trespassing
- Medical Emergencies
- Fire / Explosion

Vandalism / Trespassing

If an event of vandalism / trespassing occurs within the exclusion zone during working hours, the Chicago Police Department will respond (without entry into the exclusion zone) and coordinate with U.S. EPA On-Scene Coordinator (OSC) Ramon Mendoza. If an incident occurs during non-working hours, the Police Department will coordinate with site security guards. Attempts will be made to communicate with offenders from the site perimeter or the site command post via loud speaker. Attempts will be made to apprehend the offenders following their exit from the site. If any incidents of trespassing or vandalism occurs, U.S. EPA OSC Mendoza should be immediately notified of the situation. If any vandalism / trespassing occurs outside of the exclusion zones (i.e. the command post) standard local protocols will be utilized by the Chicago Police Department.

Medical Emergencies

Medical emergencies which occur within the exclusion zone will be coordinated by decontaminating and removing injured personnel from the exclusion zone to the support zone. Rescue operations in the exclusion zone are to be conducted only if it is not possible for the injured person to be brought outside to EMS personnel. ERRS crews will decontaminate the victim prior to the arrival of ambulance service on site if possible. The victim will be picked up at the support zone by EMS personnel.

The victim should be decontaminated to the maximum extent possible, paying particular attention to the areas of the body or clothing that were known to be in contact with site contaminants. If the injury is minor, a full decontamination should be completed and first aid administered prior to transport. If the victim's condition is serious, at a minimum, emergency decontamination should be completed using the eye wash station located in the support zone. For emergencies requiring transport to a hospital, the victim should be transported to St. Joseph Hospital (2900 N. Lake Shore Drive, Chicago, Illinois). A map showing directions to St. Joseph Hospital from the Site is attached (See Figure 1-3). The route to hospital is included in the site-specific health and safety plan (HASP), which will be posted in the support zone.

Fire / Explosion

In the event of a fire / explosion within the exclusion zone during work hours, on-site workers will meet at a pre-determined upwind rally location and notify the Chicago Fire Department and ambulance service. The first-arriving engine officer will assume control of firefighting operations. All other supporting personnel will meet at an upwind location and await assignment of duties. The fire department will evacuate any residents located in the immediate vicinity if necessary. The members of the Chicago Fire Department will access the fire from a perimeter location without entering the site exclusion zone. In the event that site entry is necessary, the Chicago Fire Department's Haz-Mat team will be called to respond to the fire / explosion incident. Effective immediately, no one is to enter the exclusion zone for fire fighting purposes without appropriate respiratory protection. All fire fighting for this should be attempted from a perimeter position if possible. Telephone numbers of personnel who should be contacted in the event of an incident during non-work hours are listed in Attachment B of this document. At a minimum, the following personnel should be notified:

- Chicago Fire Department
- U.S. EPA On-Scene Coordinator, Ramon Mendoza

In the event of heavy smoke or toxic gas emission, an evacuation may be necessary and should proceed according to Local Emergency Planning Committee and County Emergency Management Agency (LEPC-EMA) guidelines. After evacuation of nearby residents, START may assist with any necessary air monitoring in the impacted area. START assistance will be coordinated through U.S. EPA OSC Mendoza.

FIGURE 1-1

**ECONOMY PLATING SITE
CHICAGO, COOK COUNTY, ILLINOIS
SITE LOCATION MAP**

Image Source:
2008-07-01, DigitalGlobe



Site Location

Legend

0 500
Feet



Prepared for:
U.S. EPA REGION V

Contract No.: EP-S5-06-04
TDD: S05-0001-0905-008
DCN: 667-2A-AEOV



Prepared By:
WESTON
SOLUTIONS, INC

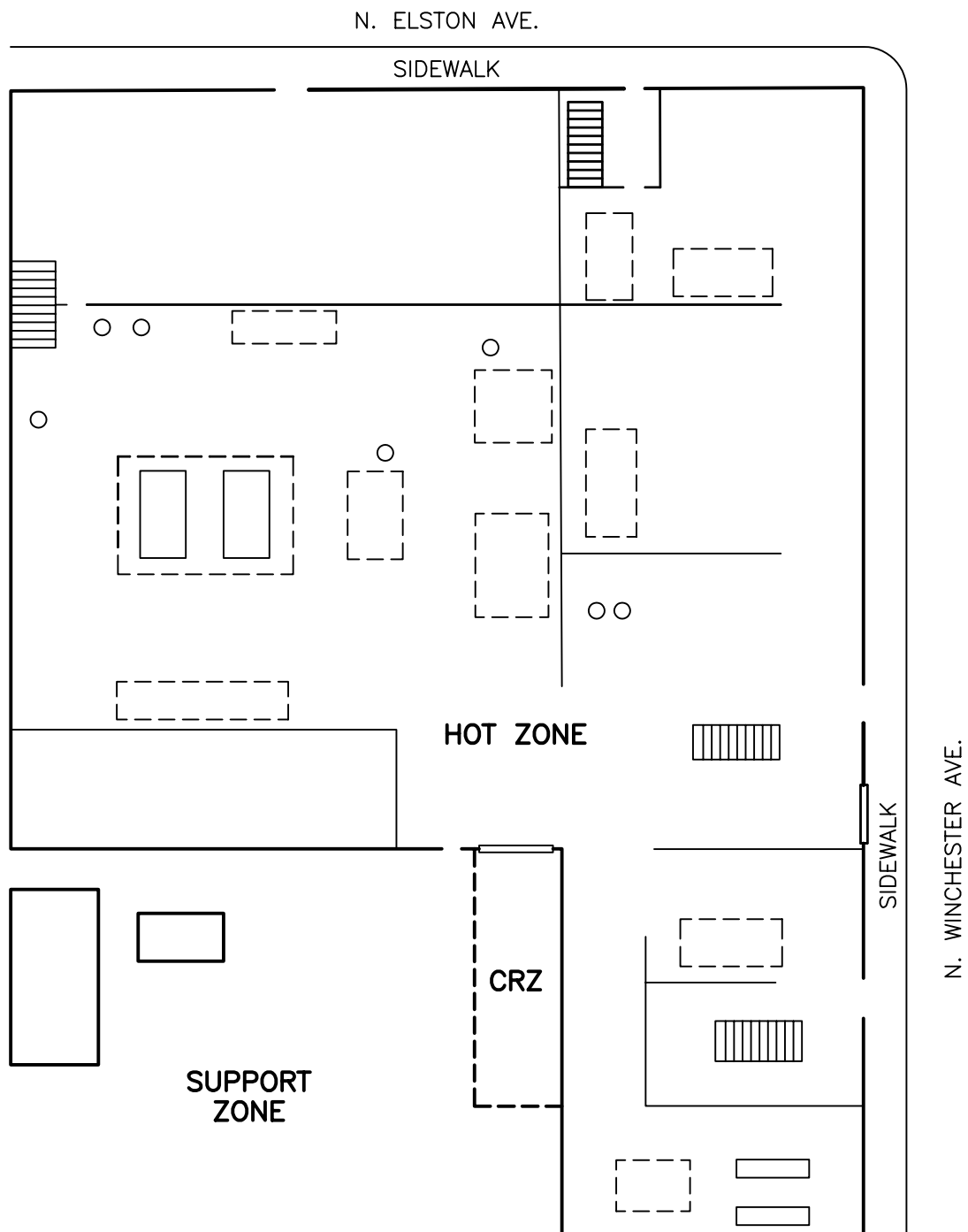
20 N. Wacker Drive
Suite 1210
Chicago, Illinois 60606

Figure 1-1
Site Location Map
Economy Plating
Chicago, Cook County, Illinois

FIGURE 1-2

**ECONOMY PLATING SITE
CHICAGO, COOK COUNTY, ILLINOIS
WORK ZONE MAP**

J:\CAD93\000\04609.dwg, 8/31/2009 9:30:29 AM



NOT TO SCALE

Figure 1-2



Prepared for:
U.S. EPA. REGION V
Contract No: EP-S5-06-04
TDD NO: S05-0001-0906-012
DCN: 667-2A-AEOV



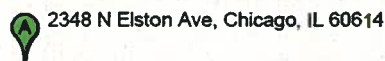
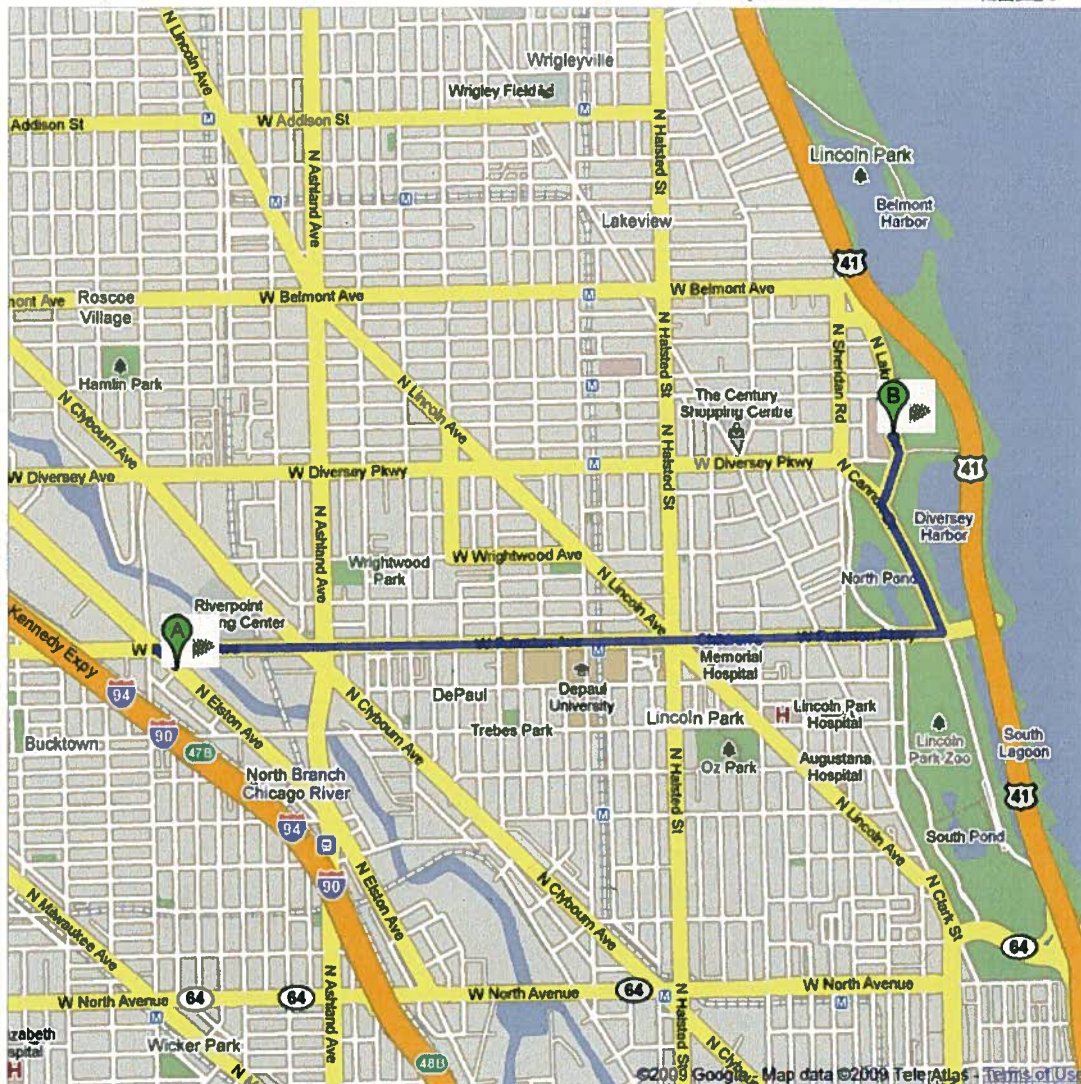
Prepared by:
WESTON SOLUTIONS, INC.
20 North Wacker Dr.
Chicago, IL 60606

Work Zone Map

Economy Plating Removal Site
2348-2350 N Elston Ave
Chicago, Cook County, Illinois

FIGURE 1-3

**ECONOMY PLATING SITE
CHICAGO, COOK COUNTY, ILLINOIS
DIRECTIONS TO ST. JOSEPH HOSPITAL**



2348 N Elston Ave, Chicago, IL 60614

1. Head northwest on N Elston Ave toward W Fullerton Ave

go 381 ft
total 381 ft



2. Sharp right at W Fullerton Ave
About 5 mins

go 1.6 mi
total 1.7 mi

3. Continue on W Fullerton Pkwy
About 1 min

go 0.7 mi
total 2.3 mi



4. Turn left at N Cannon Dr
About 1 min

go 0.4 mi
total 2.7 mi



5. Turn right at N Lake Shore Dr
Destination will be on the left

go 0.2 mi
total 3.0 mi



2900 N Lake Shore Dr, Chicago, IL 60657

These directions are for planning purposes only. You may find that construction projects, traffic, weather, or other events may cause conditions to differ from the map results, and you should plan your route accordingly. You must obey all signs or notices regarding your route.

Map data ©2009, Sanborn, Tele Atlas

ATTACHMENT A

**ECONOMY PLATING SITE
CHICAGO, COOK COUNTY, ILLINOIS
SITE FLOOR PLAN MAPS**

N. ELSTON AVE.

SIDEWALK

STAIRS UP
(CLOSED OFF)

(30) 10-GALLON
PAILS (EMPTY)
"CHROMIC ACID FLAKES"

(45) 55-GALLON
DRUMS (UNKNOWN AND
CHROMIC ACID)

(15) 55-GALLON
DRUMS (CHROMIC ACID
AND ISOPROPANOL)

(20) 55-GALLON
PAILS (CHROMIC
ACID FLAKES)

(4) 55-GALLON
DRUMS (XYLENE)

OVERPACKED LEAKING
CONTAINERS AND
20-GALLON S.S. KEG
(NITRIC ACID)

STAIRS
(UP)

SIDEWALK

N. WINCHESTER AVE.

STAIRS
(UP)

[PT]

[MISC.
DRUMS]

SOIL PILE AND YELLOW-
STAINING ON WALLS



NOT TO SCALE

Figure 1-1



Prepared for:
U.S. EPA. REGION V
Contract No: EP-S5-06-04
TDD NO: S05-0001-0906-012
DCN: 667-4D-AEOW



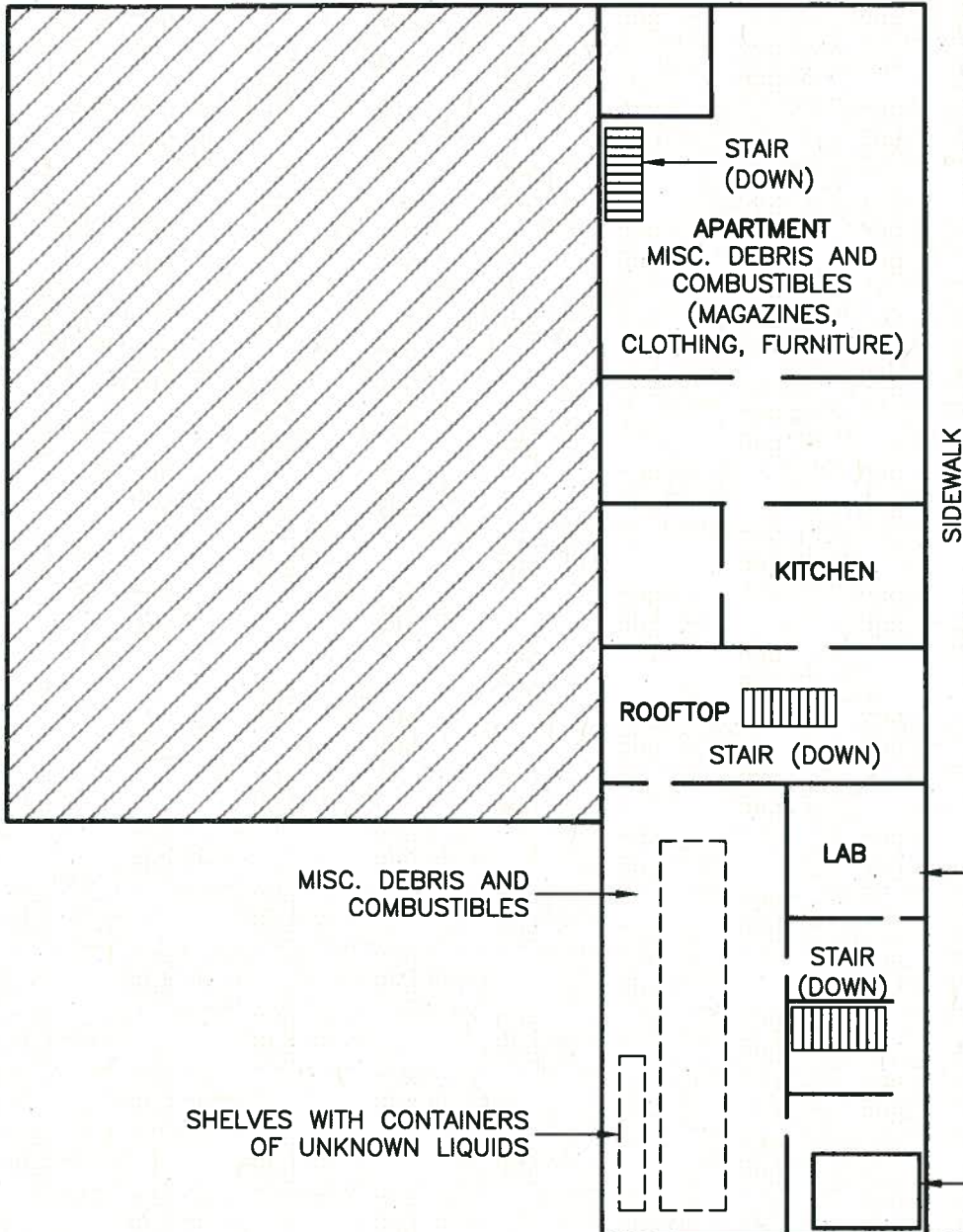
Prepared by:
WESTON SOLUTIONS, INC.
20 North Wacker Dr.
Chicago, IL 60606

Basement Floor Plan

Economy Plating Removal Site
2348-2350 N Elston Ave
Chicago, Cook County, Illinois

N. ELSTON AVE.

SIDEWALK



SIDEWALK

N. WINCHESTER AVE.



NOT TO SCALE

Figure 1-1



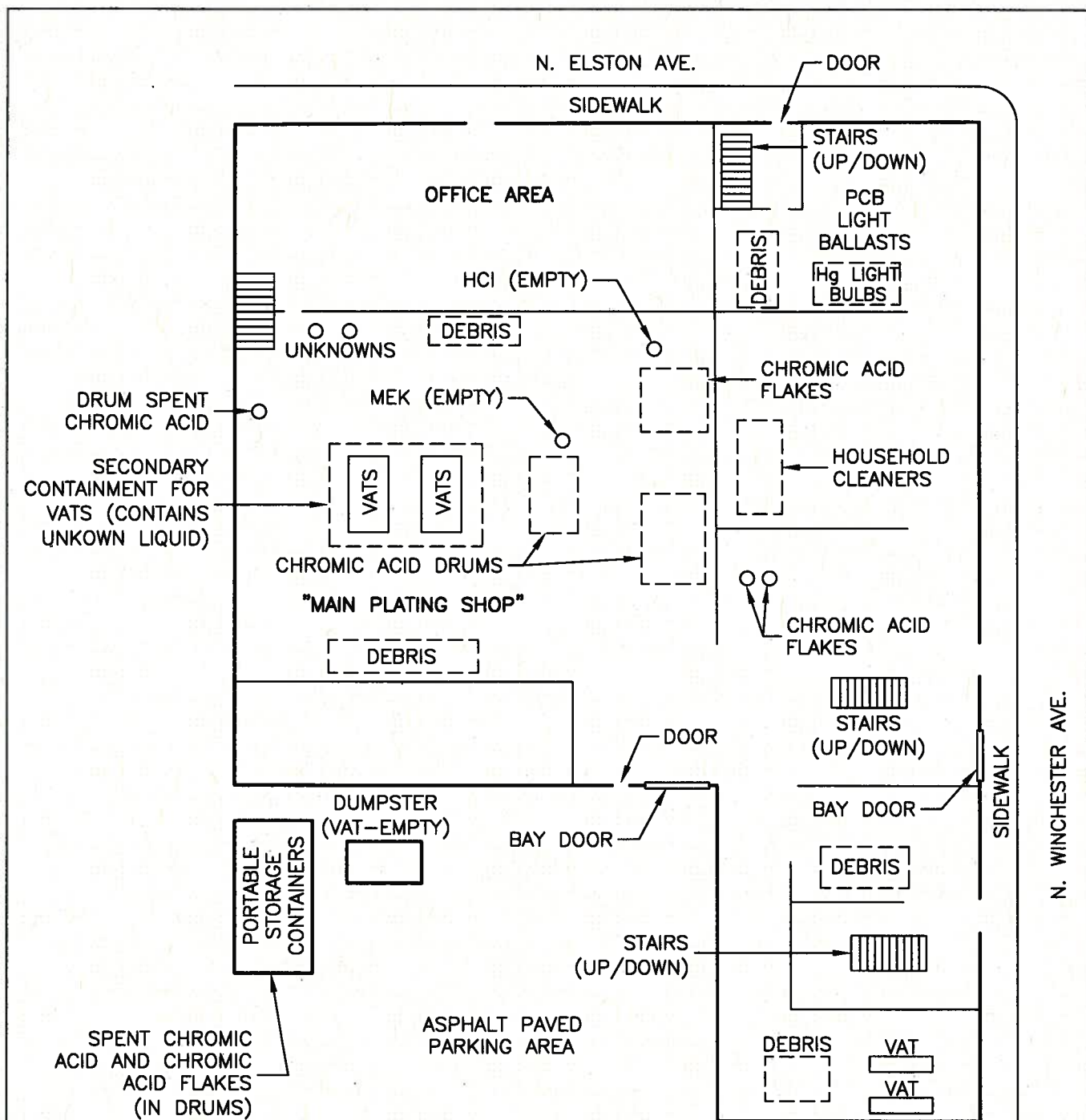
Prepared for:
U.S. EPA. REGION V
Contract No: EP-S5-06-04
TDD NO: S05-0001-0906-012
DCN: 667-4D-AEOW



Prepared by:
WESTON SOLUTIONS, INC.
20 North Wacker Dr.
Chicago, IL 60606

2nd Floor Plan

Economy Plating Removal Site
2348-2350 N Elston Ave
Chicago, Cook County, Illinois



NOT TO SCALE

Figure 1-1



Prepared for:
U.S. EPA. REGION V
Contract No: EP-S5-06-04
TDD NO: S05-0001-0906-012
DCN: 667-4D-AEOW



Prepared by:
WESTON SOLUTIONS, INC.
20 North Wacker Dr.
Chicago, IL 60606

1st Floor Plan

Economy Plating Removal Site
2348-2350 N Elston Ave
Chicago, Cook County, Illinois

ATTACHMENT B

ECONOMY PLATING SITE CHICAGO, COOK COUNTY, ILLINOIS LIST OF CONTACTS

Local / State:	Contact:	Phone Number:
Chicago Fire/Police/EMA		911
Chicago Fire Department		911
Chicago Fire Department Hazardous Materials Team		911
Chicago Police Department		911
Chicago Department of Environment (CDOE)	Pete Badillo	312-744-7197
Illinois Emergency Management Agency		800-782-7860 (24 hours)
Illinois Department of Health		217-782-4977
Federal:	Contact:	Phone Number:
U.S. EPA On-Scene Coordinator (OSC)	Ramon Mendoza	312-802-1409 (Cellular) 312-886-4314 (Office)
National Response Center		800-424-8802
U.S. EPA Contractors:	Contact:	Phone Number:
Weston Solutions, Inc. (START) Contractor	Rick Mehl	312-424-3312 (office) 847-254-6981 (cellular)
	Lauren Cook	312-424-3328 (office) 978-771-8487 (cellular)
Environmental Restoration, LLC (ERRS) Contractor	Toby Viehwig	513-543-3909 (Cellular) 800-500-0575 (office)
	John Behrens	708-473-7124 (Cellular) 708-333-9915 (office)