

**FINAL  
COMPREHENSIVE ENVIRONMENTAL RESPONSE,  
COMPENSATION, AND LIABILITY ACT  
(CERCLA)  
EMERGENCY RESPONSE REPORT  
POOLER ELEMENTARY AND HOLLY STREET MERCURY SPILLS  
POOLER, CHATHAM COUNTY, GEORGIA  
EPA CONTRACT No. EP-W-05-054  
TDD Nos. TTEMI-05-001-0061 and TTEMI-05-001-0063**

**Prepared for**

**U.S. ENVIRONMENTAL PROTECTION AGENCY  
Region 4 Emergency Response and Removal Branch  
61 Forsyth Street, SW, 11th Floor  
Atlanta, Georgia 30303**

**Prepared by**



**Tetra Tech  
EPA Region 4  
Superfund Technical Assessment and Response Team  
1955 Evergreen Boulevard, Building 200, Suite 300  
Duluth, GA 30096**



March 25, 2009

Dr. James Webster  
Mr. Terrence Byrd  
On-Scene Coordinator  
U.S. Environmental Protection Agency, Region 4  
61 Forsyth Street, SW, 11th Floor  
Atlanta, Georgia 30303

**Subject: Final Comprehensive Environmental Response, Compensation, and Liability Act  
(CERCLA) Emergency Response Report  
Pooler Elementary and Holly Street Mercury Spills  
Pooler, Chatham County, Georgia  
EPA Contract No. EP-W-05-054  
TDD Nos. TTEMI-05-001-0061 and TTEMI-05-001-0063**

Dear Dr. Webster and Mr. Byrd:

The Tetra Tech EM Inc. (Tetra Tech) Superfund Technical Assessment and Response Team (START) is submitting the final emergency response report for the Pooler Elementary and Holly Street Mercury Spills in Pooler, Chatham County, Georgia. This report summarizes response activities conducted under each of these Technical Direction Documents (TDD) from June 11 through 25, 2008.

If you have any questions about the enclosed report, please call me at (206) 300-0301 or Didi Fung at (678) 775-3095.

Sincerely,

A handwritten signature in black ink, appearing to read 'Brian Croft'.

Brian Croft  
START III Task Order Manager

A handwritten signature in black ink, appearing to read 'Andrew F. Johnson'.

Andrew F. Johnson  
START III Program Manager

Enclosure

cc: Katrina Jones, EPA Project Officer  
Darryl Walker, EPA Alternate Project Officer  
Angel Reed, Tetra Tech START III TDD Coordinator

**FINAL**  
**CERCLA EMERGENCY RESPONSE REPORT**  
**POOLER ELEMENTARY AND HOLLY STREET MERCURY SPILLS**  
**POOLER, CHATHAM COUNTY, GEORGIA**  
**EPA CONTRACT No. EP-W-05-054**  
**TDD Nos. TTEMI-05-001-0061 and TTEMI-05-001-0063**

**Revision 0**

**Prepared for**

**U.S. ENVIRONMENTAL PROTECTION AGENCY**

**Region 4, Emergency Response and Removal Branch**  
**61 Forsyth Street, SW, 11th Floor**  
**Atlanta, GA 30303**

**Prepared by**

**Tetra Tech**  
**Superfund Technical Assessment and Response Team Region 4**  
**1955 Evergreen Blvd., Building 200, Suite 300**  
**Duluth, GA 30096**



Contract No.	:	EP-W-05-054
TDD Nos.	:	TTEMI-05-001-0061
	:	TTEMI-05-001-0063
Date Prepared	:	September 30, 2008
EPA Work Task Monitors	:	Dr. James Webster
	:	Mr. Terrence Byrd
Telephone Nos.	:	(404) 562-8769
	:	(404) 562-8755
Prepared by	:	Tetra Tech
Tetra Tech START Task Order Manager:	:	Brian Croft
Telephone No.	:	(206) 300-0301

Prepared by

---

Brian Croft  
Tetra Tech START III Task  
Order Manager

Reviewed by

---

(for) Yuen Chang (Didi) Fung  
Tetra Tech START III Technical  
Reviewer

Approved by

---

Andrew F. Johnson  
Tetra Tech START III Program  
Manager

## CONTENTS

<u>Section</u>	<u>Page</u>
1.0 INTRODUCTION	1
2.0 BACKGROUND	1
3.0 EMERGENCY RESPONSE ACTION ACTIVITIES	2
3.1 POOLER ELEMENTARY SCHOOL ASSESSMENT AND CLEANUP ACTIVITIES	2
3.2 OFFSITE PROPERTY ASSESSMENT AND CLEANUP ACTIVITIES	6
3.2.1 HIGH LEVEL-OF-EFFORT (LOE) PROPERTIES	7
3.2.2 INTERMEDIATE LOE PROPERTIES	8
3.2.3 LOW LOE PROPERTIES	9
3.3 INVENTORYING AND SCREENING OF PERSONAL ITEMS	10
3.4 COMMUNITY INVOLVEMENT ACTIVITIES	11
4.0 SUMMARY	12

### Appendix

A	FIGURES
B	LOGBOOK NOTES
C	PHOTOGRAPHIC LOG
D	PUBLIC MEETING VIDEO
E	TABLE OF WITNESSES

### Attachment

1	PROPERTY DATABASE
2	NEWSPAPER ARTICLES
3	NRC INCIDENT REPORT





## 1.0 INTRODUCTION

This Comprehensive Environmental Response, Compensation, and Liability Act (CERCLA) emergency response report has been prepared under the provisions of Technical Direction Document (TDD) Numbers (Nos.) TTEMI-05-001-0061 and TTEMI-05-001-0063, which the U.S. Environmental Protection Agency Region 4 (EPA) assigned to the Tetra Tech EM Inc. (Tetra Tech) Region 4 Superfund Technical Assessment and Response Team (START) under Contract No. EP-W-05-054. The overall scope of these TDDs, monitored by EPA On-Scene Coordinator (OSC) Dr. James Webster, was to respond to the Pooler Elementary and Holly Street Mercury Spills. Although these projects were issued under separate TDDs, this report addresses emergency response activities conducted at both sites because of the similar background associated with each. Specific elements of these TDDs included providing personnel and equipment to respond to a release of mercury involving an elementary school, as well as local residences; preparing a health and safety plan; coordinating sampling activities with the Task Monitor; conducting air monitoring using Lumex 915+ mercury vapor analyzers (Lumex); assisting with the implementation of Incident Command System (ICS); preparing written and photographic documentation of emergency response activities; and preparing a draft/final report upon completion of response activities.

This CERCLA emergency response report discusses the site background (see Section 2.0), emergency response activities (see Section 3.0), and provides a summary of response activities (see Section 4.0). Appendix A provides figures that illustrate locations of response activities. Appendix B provides the logbook notes documenting response activities. Appendix C provides a photographic log documenting response activities. Appendix D provides an electronic copy of the video documenting the public meeting held during response activities. Appendix E provides a table of witnesses associated with this response. Attachment 1 provides an electronic copy of the database maintained during response activities. Attachment 2 provides various newspaper articles gathered during response activities. Attachment 3 provides a copy of the National Response Center (NRC) incident report for these incidents.

## 2.0 BACKGROUND

On June 10, 2008, a student reportedly brought elemental mercury to the Pooler Elementary School in Pooler, Chatham County, Georgia (see Figure 1). According to school officials, students initially played with the mercury in a classroom, the cafeteria, and in the school gymnasium during a graduation dance held later that day. On June 11, 2008, the NRC received a call regarding the

incident, which was assigned Incident Report No. 873821 (see Attachment 3). The NRC report indicated that an estimated volume of one teaspoon (approximately 1 pound) of mercury had been spilled. The Georgia Department of Natural Resources (DNR) Environmental Protection Division (EPD) responded to the incident and subsequently requested EPA assistance to assess the extent of contamination.

### **3.0 EMERGENCY RESPONSE ACTIVITIES**

On June 11, 2008, Tetra Tech START mobilized to the site and met with representatives from EPA; Georgia EPD; local fire, police, and health departments; and the Pooler Elementary School. ICS protocols were implemented to organize, manage, and coordinate response efforts among the entities involved. Unified command for this response was provided by EPA, Georgia EPD, and the Chatham County Board of Education Campus Police. Based on recommendations from the Agency for Toxic Substances and Disease Registry, EPA has established a preliminary attainment goal of 1,000 nanograms per cubic meter ( $\text{ng}/\text{m}^3$ ) of mercury for indoor ambient air.

Response activities consisted of the following four primary functions: Pooler Elementary School assessment and cleanup activities; offsite property assessment and cleanup, including residences, daycare facilities, and businesses; inventory and screening of personal items, including vehicles and clothing; and community involvement. These functions are discussed further in the following subsections.

#### **3.1 POOLER ELEMENTARY SCHOOL ASSESSMENT AND CLEANUP ACTIVITIES**

The Pooler Elementary School consists of five buildings (Wings 1 through 4 and the Whittaker Gymnasium) and four ancillary modular trailers used as offices, classrooms, and storage space (see Figure 2). On June 11, 2008, Tetra Tech START initiated screening activities at the school using a Lumex mercury vapor analyzer, with a detection limit of  $2 \text{ ng}/\text{m}^3$  and a maximum sensitivity of  $50,000 \text{ ng}/\text{m}^3$ . Monitoring was performed using a single 10-second average determined by the Lumex at each location. Initial screening activities in each building and trailer indicated the following mercury vapor concentrations:

- Mercury vapor concentrations in Wing 1 ranged from 1,100 to  $40,000 \text{ ng}/\text{m}^3$ , with the highest readings identified in: the janitor's closet next to the girls' room ( $40,000 \text{ ng}/\text{m}^3$ ); Room 2 ( $14,000 \text{ ng}/\text{m}^3$ ), where some students reportedly had played with the mercury; and a floormat near the building entrance between Rooms 6 and 7 ( $25,000 \text{ ng}/\text{m}^3$ ).

- Mercury vapor concentrations in Wing 2 ranged from 644 to 50,000 ng/m<sup>3</sup>, with the highest readings identified in the janitor's closet (50,000 ng/m<sup>3</sup>) and a floormat near the building entrance between Rooms 26 and 31 (10,000 ng/m<sup>3</sup>).
- Mercury vapor concentrations in Wing 3 ranged from 418 up to 2,000 ng/m<sup>3</sup>, with the highest readings identified in Room 21 and on the floormats inside and outside of the east end of the wing.
- Mercury vapor concentrations in Wing 4 ranged from 109 to 500 ng/m<sup>3</sup>.
- Mercury vapor concentrations in the Whittaker Gymnasium were 90,000 ng/m<sup>3</sup> at the east entrance to the building.
- Mercury vapor concentrations in the four ancillary modular trailers ranged from 4 to 225 ng/m<sup>3</sup>.

Based on discussions with school officials regarding the incident and the results of initial screening activities, EPA directed Environmental Restoration LLC, the Emergency and Rapid Response Services (ERRS) contractor, to initiate cleanup activities focusing on Wings 1 and 2, as well as the gymnasium. Cleanup activities included removal of items suspected contaminated such as carpet, floormats, drains, desks, book bags, and other small items; these were staged outside on plastic and allowed to heat and vent in an attempt to “bake” the mercury vapor from the items. Portable heaters and fans were also used to heat and vent contaminated rooms, when necessary. Ventilation systems remained off during response activities.

ERRS continued cleanup activities at the school from June 12 through 23, 2008. Throughout cleanup activities, periodic monitoring of hot spot areas was conducted to determine the effectiveness of remediation efforts. The following paragraphs summarize remediation efforts during the response.

**Wing 1:** Cleanup activities in Wing 1 involved remediation efforts throughout the building. Efforts initially focused on the janitor's closet and Room 2, but also included several other areas of the building. During the response, a heating and venting technique was used to assist in vaporizing and clearing the mercury from the building. Floormats and other items that indicated high concentrations of mercury were considered potential sources of mercury vapors and were removed from the building. Specifically targeted were numerous t-shirts made for graduating students that had been temporarily stored in a closet where the mercury had spilled.

In the janitor's closet, equipment such as mops and buckets that the janitorial staff had used during the school's cleanup efforts was found to be highly contaminated and removed from the building. Drains

in the janitor's closet were flushed and the closet was scrubbed with mercury-cleaning solution in an attempt to lower mercury concentrations. Multiple cleanings and subsequent rescreenings of the sink and associated drains in the janitor's closet were necessary before the attainment goal of 1,000 ng/m<sup>3</sup> was achieved.

Room 2, where some students reportedly had played with the mercury, was completely cleared of all items, including carpet, desks, chairs, and miscellaneous small items. In addition, a mercury vacuum and mercury-cleaning solution were used in an attempt to reduce mercury concentrations in this room. Despite these efforts, mercury concentrations remained high in this classroom, and the decision was made to apply epoxy paint to the floor throughout Room 2. This measure succeeded in significantly reducing mercury concentrations.

Final clearance testing in Wing 1 performed by START on June 20, 2008, indicated mercury concentrations that ranged from 75 to 984 ng/m<sup>3</sup> — below the removal action level of 1,000 ng/m<sup>3</sup>. However, a steady increase of concentrations was observed in several locations throughout the testing period, including the main hallway, the cafeteria, the boys' and girls' rooms in the eastern portion of the building, and the main office. Because of concerns regarding a potential source of mercury vapors still in the building, EPA and START conducted further screening in these areas. Based on these screening results, EPA directed ERRS to conduct additional cleanup activities in Wing 1, including removal of carpet from the main office and use of mercury-cleaning solution in the boys' and girls' rooms, and in the cafeteria. Following these actions, EPA conducted additional screening and determined that mercury concentrations were significantly lower throughout the building, including the main hallway. As a result, Wing 1 was declared clear and returned to the school representatives for occupancy.

**Wing 2:** Cleanup activities in Wing 2 focused on the area in and around the janitor's closet located in the middle of the building. Equipment such as mops and buckets that the janitorial staff had used during the incident was found highly contaminated and removed from the building. Drains in the janitor's closet were flushed with mercury-cleaning solution in an attempt to lower mercury concentrations, as were the floors inside and outside the closet. Similar to the janitor's closet in Wing 1, the sink and associated floor drain in Wing 2 required multiple cleanings and subsequent rescreenings before the attainment goal of 1,000 ng/m<sup>3</sup> was achieved. The west hallway and bathroom also needed multiple cleaning efforts before clearance testing could begin.

Final clearance testing in Wing 2 performed by START on June 18, 2008, indicated mercury

concentrations that ranged from 149 to 893 ng/m<sup>3</sup> — below the removal action level of 1,000 ng/m<sup>3</sup>. As a result, Wing 2 was declared clear and returned to the school representatives for occupancy.

**Wing 3:** Cleanup activities in Wing 3 focused on a few floor mats at the east end of the wing and a rug in the media center. Floor mats at the entrances to this building were identified to contain high concentrations and were removed from the building along with other items. Other cleanup efforts conducted in this wing included ventilation of the building prior to initiating clearance testing.

Final clearance testing in Wing 3 performed by START on June 15, 2008, indicated mercury concentrations that ranged from 31 to 414 ng/m<sup>3</sup> — below the removal action level of 1,000 ng/m<sup>3</sup>. As a result, Wing 3 was declared clear and returned to the school representatives for occupancy.

**Wing 4:** Cleanup activities in Wing 4 were limited to removal of floor mats from the entrances to this building.

Final clearance testing in Wing 4 performed by START on June 15, 2008, indicated mercury concentrations that ranged from 2 to 313 ng/m<sup>3</sup> — below the removal action level of 1,000 ng/m<sup>3</sup>. As a result, Wing 4 was declared clear and returned to the school representatives for occupancy.

**Whittaker Gymnasium:** Cleanup activities in the gymnasium required extensive efforts and involved the use of mercury vacuums and mercury-cleaning solutions to scrub the entire floor. The areas where the gym floor connected with the walls were particularly difficult to clean. Ultimately, epoxy paint was applied to the floor of the gymnasium, as well as the boys' room because of continued concentrations of mercury above 1,000 ng/m<sup>3</sup>. In addition, elevated concentrations of mercury were detected on numerous athletic balls and padded mats that were also removed from the building.

Final clearance testing in the Whittaker Gymnasium performed by START on June 23, 2008, indicated mercury concentrations that ranged from 93 to 447 ng/m<sup>3</sup> — below the removal action level of 1,000 ng/m<sup>3</sup>. As a result, the Whittaker Gymnasium was declared clear and returned to the school representatives for occupancy.

**Outlying Modular Trailers (Rooms 16 through 19 and 33 through 36):** Based on initial screening results, no cleanup activities were required in the outlying modular trailers. Throughout the response, these structures were used to manage cleanup operations or remained locked and under restricted access to eliminate the potential for introduction of transient mercury contamination.

Final clearance testing in the outlying modular trailers performed by START on June 23, 2008, indicated mercury concentrations that ranged from 2 to 183 ng/m<sup>3</sup> — below the removal action level of 1,000 ng/m<sup>3</sup>. As a result, the outlying modular trailers were declared clear and returned to the school representatives for occupancy.

### **3.2 OFFSITE PROPERTY ASSESSMENT AND CLEANUP ACTIVITIES**

By the second day of the response, the need for additional teams was apparent to expedite assessment activities. Each day revealed new information regarding the incident, and the number of offsite property assessments quickly grew from approximately 25 to more than 100 properties. As a result, additional EPA and START personnel were mobilized to assist with the response, particularly offsite property assessment activities, which included screening local residences, daycare facilities, and commercial facilities where contact with the mercury may have occurred or concerns regarding the mercury spill existed. These locations included the homes of teachers and students, as well as other facilities where students may have visited following the incident.

Offsite property assessment activities were conducted by each team using a Lumex and wearing appropriate personal protective equipment, including tyvek booties to minimize contact with potential mercury sources. Ventilation systems were temporarily turned off to allow air inside the structures to equilibrate, and initial air monitoring readings were obtained from inside the doorway of each property. The floors, followed by the breathing zone, were then monitored throughout each property in attempts to retrace the steps of any potentially contaminated individual. Additional readings were collected from point sources where mercury or mercury vapors are commonly found, such as book bags, clothes, shoes, washers and dryers, sinks, and vacuum cleaners. Lumex readings obtained from each property were recorded and later transferred to the database maintained during response activities. The database was used to evaluate whether cleanup activities were required. Attachment 1 provides an electronic copy of the database.

A total of 115 offsite properties were assessed during response activities and were classified into the following three categories: high level-of effort (LOE) properties; intermediate LOE properties; and

low LOE properties. Figure 3 in Appendix A illustrates the locations of offsite properties assessed during response activities. The following subsections provide further detail regarding each of these categories.

### 3.2.1 High LOE Properties

High LOE properties include those properties at which mercury was identified at concentrations above 1,000 ng/m<sup>3</sup> and where more extensive cleanup efforts were required. Four high LOE properties were identified:

- **1206 Estates Way:** This property was identified as the “source house” and required cleanup activities that were monitored and reported by TN & Associates, Inc. Cleanup activities conducted from June 11 through 19, 2008, included temporary relocation of the residents, as well as removal and replacement of a washing machine and dryer, carpet, and portions of an interior wall of the house. Final clearance testing for this property on June 19, 2008, indicated mercury concentrations that ranged from 66 to 786 ng/m<sup>3</sup>.
- **612 Holly Street:** Initial mercury concentrations over 50,000 ng/m<sup>3</sup> were identified inside the washing machine and vacuum cleaner, and over 900 ng/m<sup>3</sup> in the child’s bedroom. Cleanup activities conducted from June 16 through 19, 2008, included removal and replacement of a washing machine, vacuum cleaner, carpet, and various personal items. Final clearance testing for this property on June 21, 2008, indicated mercury concentrations that ranged from 8 to 89 ng/m<sup>3</sup>.
- **50 Stephen S. Green Drive:** This property involved a hotel room at the Candlewood Suites, where initial mercury concentrations were identified up to 2,300 ng/m<sup>3</sup>; the elevated readings were detected primarily in blankets and the carpet in the hotel room where the children reportedly had played following the school dance. Cleanup activities at this property involved relocation of the residents to another hotel room, and heating and venting of the room to reduce mercury concentrations. In addition, personal belongings were screened with the Lumex. Some items had to be disposed of, while the remaining items were returned. Final clearance testing for this property on June 21, 2008, indicated mercury concentrations that ranged from 131 to 230 ng/m<sup>3</sup>.
- **216 Pink Dogwood Lane:** Although screening results for the residence at this property indicated mercury concentrations that ranged from 3 to 350 ng/m<sup>3</sup>, additional screening of the vehicle and numerous personal items from this property indicated mercury concentrations above the attainment goal of 1,000 ng/m<sup>3</sup>. As a result, the vehicle and personal items were

removed from the property and taken to the school staging area for cleanup activities. The seats and floormats were removed from the vehicle and allowed to heat and vent in the sun along with personal items, which were placed in plastic bags to assist with heating and venting. Eventually, screening results indicated mercury concentrations below 1,000 ng/m<sup>3</sup> for the seats, and they were re-installed in the vehicle. However, the floor mats continued to indicate mercury concentrations above 1,000 ng/m<sup>3</sup>, and thus were disposed of and replaced with new mats. Personal items from this property were rescreened periodically, and those that indicated mercury concentrations below 1,000 ng/m<sup>3</sup> were returned to the owners, while those that continued to indicate concentrations above 1,000 ng/m<sup>3</sup> were inventoried and entered into the database prior to disposal.

### 3.2.2 Intermediate LOE Properties

Intermediate LOE properties include those properties at which elevated mercury was identified at concentrations above 1,000 ng/m<sup>3</sup> but which required only limited cleanup activities, such as removal of minor quantities of personal items and, in some instances, cleaning or removal and replacement of a washing machine or dryer. When personal items were removed, they were returned to the staging area where, if possible, they were heated and vented to reduce mercury concentrations prior to being returned to the owner. If a reduction in mercury concentrations was not achievable, the items were inventoried and photographed prior to disposal so that the owner could be reimbursed for each item. In instances where washing machines indicated contamination, a mercury-cleaning solution was flushed through the washing machine, followed by multiple rinse cycles, and the machine was allowed to dry naturally. Additional screening was conducted of the washing machine until mercury concentrations were below 1,000 ng/m<sup>3</sup>. Dryers that indicated elevated mercury concentrations were scrubbed using a mercury-cleaning solution, rinsed, and allowed to dry prior to being rescreened. However, four washing machines and one dryer at intermediate LOE properties required replacement because attempts to clean them were unsuccessful; in these instances, the appliances were removed and replaced with new items. Twenty-nine intermediate LOE properties were identified as listed below:

- 134 Arbor Village Drive
- 122 Ashwood Drive
- 1515 Benton Boulevard (Apt 2211)
- 19 Blackberry Lane
- 483 Copper Creek Circle
- 115 Dowd Street
- 421 East Mell Street
- 117 East Whatley Street
- 122 Fire Thorn Lane
- 219 Grasslands Drive



- 2 Haydens Court
- 612 Manden Lane
- 123 Manor Row
- 328 Moore Avenue
- 133 Nandina Way
- 1517 Osprey Point Circle
- 108 Pampas Drive
- 123 Pampas Drive
- 259 Pampas Drive
- 5 Roberts Street
- 145 Runner Road
- 312 Silverbrook Circle
- 317 Silverbrook Circle
- 9 Splitleaf Court
- 306 Symons Street
- 7 Tea Olive Circle
- 114 Timberland Gap
- 120 White Dogwood Lane
- 86 Yellow Jasmine Court

### 3.2.3 Low LOE Properties

Low LOE properties include those properties at which screening results indicated mercury concentrations below 1,000 ng/m<sup>3</sup>. These properties did not require cleanup activities and were cleared for occupancy. Eighty-two low LOE properties were identified as listed below.

- 76 Al Henderson Boulevard
- 16 Arbors Circle
- 157 Arbor Village Drive
- 162 Arbor Village Drive
- 163 Arbor Village Drive
- 65 B Court
- 1515 Benton Boulevard (Apt 1921)
- 607 Benton Drive
- 200 Brighton Woods Drive
- 115 Busbridge Cove
- 6 Cassidy Court
- 301 Cherry Street
- 4 Chestnut Street
- 506 Cliff Drive
- 607 Cliff Drive
- 3 Conservation Drive
- 408 Copper Creek Circle
- 418 Copper Creek Circle
- 482 Copper Creek Circle
- 7 Crystal Lake Drive
- 1602 Dean Forest Road
- 1 East Gazebo Lane
- 1705 East Highway 80
- 305 East Tietgen Street
- 115 East Whatley Street
- 119 East Whatley Street
- 321 East Whatley Street
- 154 Fire Thorn Lane
- 204 Garden Acres Way
- 7336 Garfield Street
- 404 Gleason Court
- 422 Gleason Court
- 503 Gleason Avenue
- 519 Gleason Avenue

- 213 Holly Avenue
- 405 Holly Avenue
- 121 Hunter Lane
- 165 Isaac LaRoche Drive
- 213 James Road
- 130 Longleaf Circle
- 313 Manden Road
- 608 Manden Lane
- 405 Musket Court
- 103 Nandina Way
- 136 Nandina Way
- 159 Nandina Way
- 4 Night Herron Way
- 110 North Chestnut Street
- 210 North Newton Avenue
- 114 North Skinner Avenue
- 119 North Skinner Avenue
- 205 North Skinner Avenue
- 5090 Old Louisville Road
- 1314 Osprey Point Circle
- 7 Pinehurst Lane
- 139 Pineview Crossing
- 105 Pinewood Drive
- 212 Pink Dogwood Lane
- 218 Pink Dogwood Lane
- 219 Pink Dogwood Lane
- 1132 Plantation Road
- 80 Railroad Avenue
- 14 Ravenwood Way
- 508 Rogers Street
- 225 Rothwell Street
- 231B Rothwell Street
- 411 Sangrena Drive
- 290 Shearhouse Road
- 297 Silverbrook Circle
- 299 Silverbrook Circle
- 214 Symons Street
- 10 Tea Olive Circle
- 129 Titleist Circle
- 119 Village Lake Drive
- 162 Village Lake Drive
- 166 Village Lake Drive
- 188 Walter Samuel Road
- 321 West Collins Street
- 416 West Whatley Street
- 122 White Dogwood Lane
- 419 Winskie Road
- 505 Wyndmer Place

### 3.3 INVENTORYING AND SCREENING OF PERSONAL ITEMS

Concurrent with assessment and cleanup activities at the school and offsite properties, screening of personal items and vehicles was conducted in the parking lot of the school. Initially, these activities focused on the vehicles and personal items owned by teachers, school officials, and students who had entered Room 2 in Wing 1. Subsequently, these activities were opened to all members of the community who may have come into contact with mercury in the school or gymnasium, as well as those who simply had concerns regarding potential for mercury contamination.

On a daily basis, START personnel were staged in the parking lot of the school to screen vehicles and personal items owned by local residents registered at the school as they arrived. Personal items and vehicles were screened using a Lumex and were returned to the owners when screening results indicated mercury concentrations below 1,000 ng/m<sup>3</sup>. During screening activities at the school, no vehicles indicated mercury concentrations above 1,000 ng/m<sup>3</sup>. In instances where screening results for personal items indicated mercury concentrations above 1,000 ng/m<sup>3</sup>, the items were inventoried, placed in a plastic bag, and staged to allow heating and venting to occur. Periodically, bagged items were re-screened to determine whether heating and venting activities had been effective.

Upon completion of screening activities, owners were notified of the status of their items and offered the opportunity to pick up those items with mercury concentrations below 1,000 ng/m<sup>3</sup>. Items with mercury concentrations remaining above 1,000 ng/m<sup>3</sup>, as well as those items with mercury concentrations below 1,000 ng/m<sup>3</sup> not picked up by the owners, were disposed of, and the database was updated to reflect the disposition so the items could be included in the reimbursement process.

### **3.4 COMMUNITY INVOLVEMENT ACTIVITIES**

At EPA's request, Tetra Tech START provided support for the following community involvement activities throughout the response:

- Supporting Unified Command and, in particular, the EPA Public Information Officer (PIO) in gathering, organizing, maintaining, and disseminating information regarding assessment and cleanup efforts.
- Coordinating access agreements with local residents and businesses during screening and cleanup activities at offsite properties.
- Scheduling assessment teams for screening activities at offsite properties, including cleanup activities conducted by ERRS that were required based on screening results.
- Coordinating the return of personal items to local residents following completion of screening activities, including notifying residents of the status of items available for return.
- Tracking the status of contaminated items not returned due to elevated concentrations of mercury, including obtaining signatures from affected residents in accordance with the reimbursement process.
- Working with database managers to ensure accurate representation of the status of personal items and offsite properties.
- Providing support to EPA during the public meeting on June 17, 2008, at a nearby middle

school to answer questions and respond to concerns raised by community members. Activities included preparing signs to advertise the meeting, registering attendees, addressing questions raised during the meeting, and providing written and videotaped documentation of the meeting.

#### 4.0 SUMMARY

On June 10, 2008, EPA was notified of a mercury spill at the Pooler Elementary School in Pooler, Chatham County, Georgia. On June 11, EPA conducted an assessment of the situation and initiated an emergency response to address contamination identified both at the school and at offsite properties in the vicinity of the school. START and ERRS resources were mobilized to conduct assessment and cleanup activities. The response included four primary functions: assessment and cleanup of the school; assessment and cleanup of offsite properties; inventory and screening of personal items; and community involvement activities.

Assessment and cleanup activities at the school from June 11 through 24, 2008, involved standard methods used for mercury spills — including use of mercury vacuums and mercury-cleaning solutions, and heating and venting of contaminated items. In addition, epoxy paint was used to seal floor surfaces in Wing 1 and the Whittaker Gymnasium when other cleanup tactics did not achieve the attainment goal of 1,000 ng/m<sup>3</sup>. Items that could not be cleaned to this attainment goal were inventoried and scheduled for reimbursement in accordance with federal policies. Clearance testing for the various buildings associated with the school was conducted from June 15 through 23, 2008. Based on the results of the clearance testing, EPA met with representatives from the Pooler Elementary School and the Chatham County Board of Education and conducted a final walkthrough of the building; the school was subsequently cleared for occupancy. On June 24, 2008, EPA attended a meeting with Chatham County Board of Education officials to review the response and address remaining concerns.

Assessment and cleanup activities at offsite properties were conducted to address transient mercury contamination that existed at various locations in the vicinity of the school, including the “source house” where the mercury had originated. During response activities, 115 offsite properties were assessed using a Lumex to conduct mercury screening, and were subsequently categorized as high LOE properties, intermediate LOE properties, or low LOE properties, depending on the extent of cleanup activities required. Cleanup activities at three of the four high LOE properties included temporary relocation of residents. Removal and replacement of contaminated items occurred at each

of the four high LOE properties. Cleanup activities at the 29 intermediate LOE properties were limited to removal of contaminated personal items and, in some instances, cleaning or removal and replacement of contaminated washing machines or dryers. A total of 82 low LOE properties identified during assessment activities required no cleanup efforts because screening results indicated mercury concentrations below the attainment goal of 1,000 ng/m<sup>3</sup>.

Personal items were inventoried and screened at the school property throughout the response. These activities included screening personal items and vehicles brought by school representatives and local residents who may have come into contact with mercury during the incident. As these items arrived, START screened each item or vehicle using a Lumex to determine mercury concentrations. Throughout screening activities conducted at the school, no vehicles were found to contain mercury concentrations above the attainment goal of 1,000 ng/m<sup>3</sup>. Personal items found to contain concentrations above the attainment goal were placed in plastic bags and staged in the sun to allow heating and venting to occur in an attempt to reduce mercury concentrations. If concentrations were reduced below the attainment goal, those items were returned to the owners. Items with mercury concentrations remaining above the attainment goal were inventoried for reimbursement in accordance with federal policies and then disposed. Attachment 1 provides an electronic copy of the database used to track screening results throughout the response.

Community involvement activities were conducted throughout the response to gather, organize, maintain, and disseminate information regarding the status of assessment and cleanup efforts. These activities were managed under Unified Command by EPA's PIO, and included coordination among local, state, and federal agencies. Specific activities included coordinating with school officials regarding progress of cleanup efforts at the school, obtaining access agreements for assessment and cleanup activities at offsite properties, and coordinating the screening and eventual return or disposal of contaminated personal items. In addition, EPA's PIO arranged for temporary relocation of residents who were displaced because of cleanup activities at their homes.

On June 24, 2008, Tetra Tech START demobilized from the site.

## **APPENDIX A**

### **FIGURES (Three Pages)**

Figure 1 – Site Location

Figure 2 – Building Layout (Pooler Elementary School)

Figure 3 – Offsite Property Assessment Locations



**TETRA TECH**

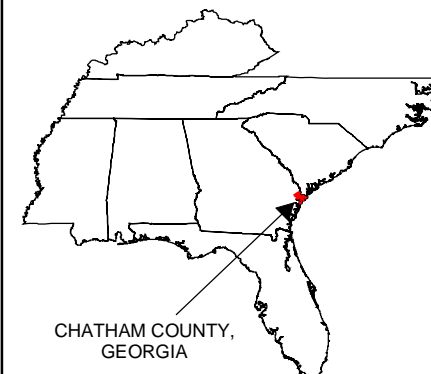
TTEMI-05-001-0061 (Pooler Elementary Mercury Spill)  
TTEMI-05-001-0063 (Holly Street Mercury Spill)





0 1,000 2,000  
Feet  
1:24,000

MAP SOURCE:  
USGS TOPOGRAPHIC QUADRANGLES,  
MELDRIM, GA 1978,  
PORT WENTWORTH, GA-SC 1982,  
MELDRIM SE, GA 1977,  
& GARDEN CITY, GA 1981.



CHATHAM COUNTY,  
GEORGIA

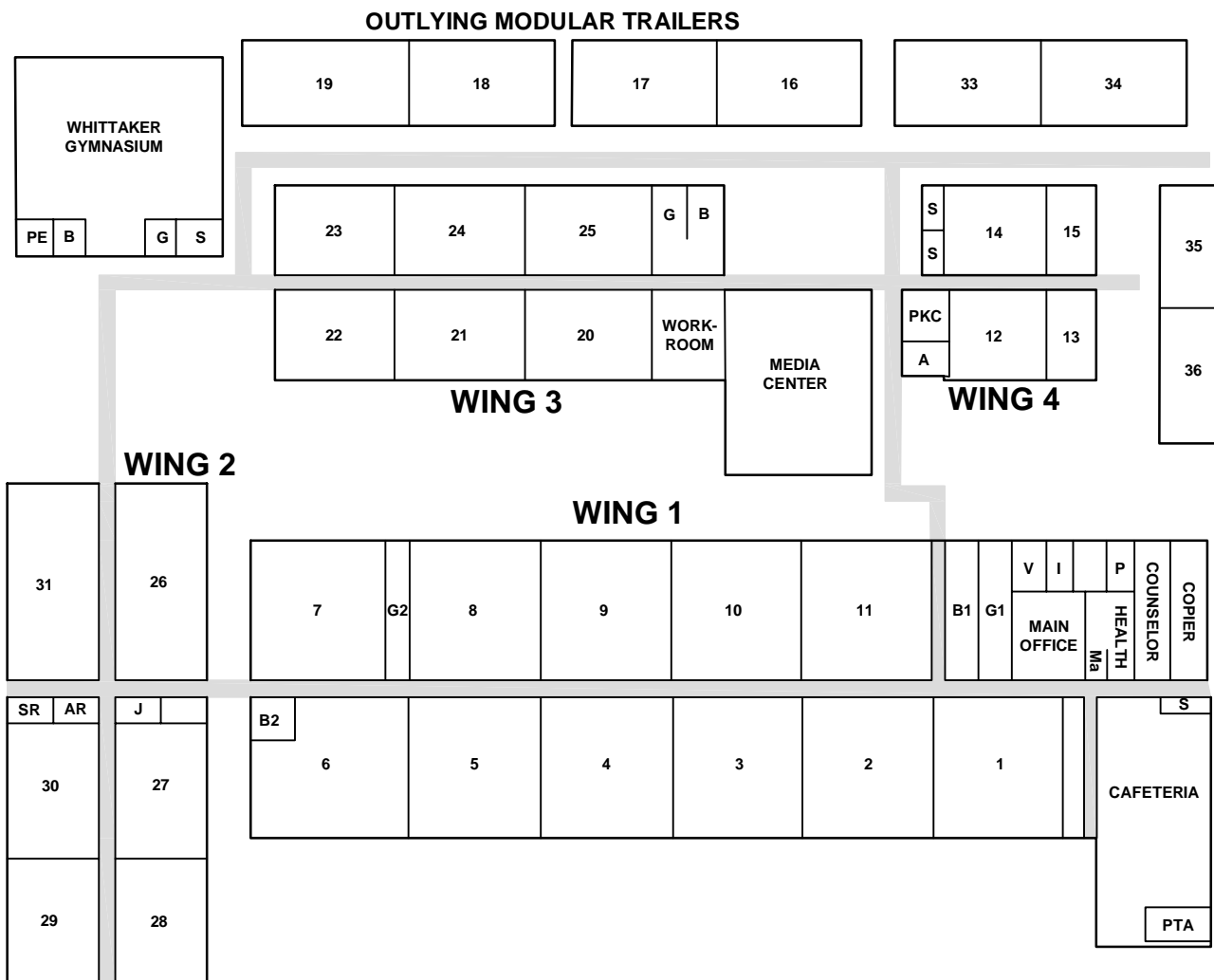


United States Environmental Protection Agency

POOLER ELEMENTARY MERCURY SPILL  
POOLER,  
CHATHAM COUNTY,  
GEORGIA  
TDD No.TTEMI-05-001-0061

**FIGURE 1  
SITE LOCATION**



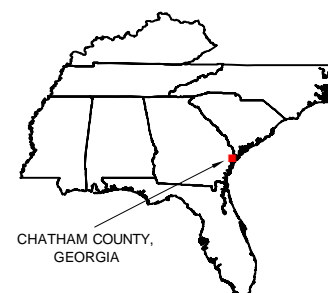


NOT TO  
SCALE

Hallway / Walkway

**NOTES:**

A - Assistant Principle  
B - Boys room  
I - Info. Spec.  
G - Girls room  
AR - Adult room  
SR - SPED room  
Ma - Mail room  
P - Principal  
PE - PE office  
S - Storage  
V - Vault



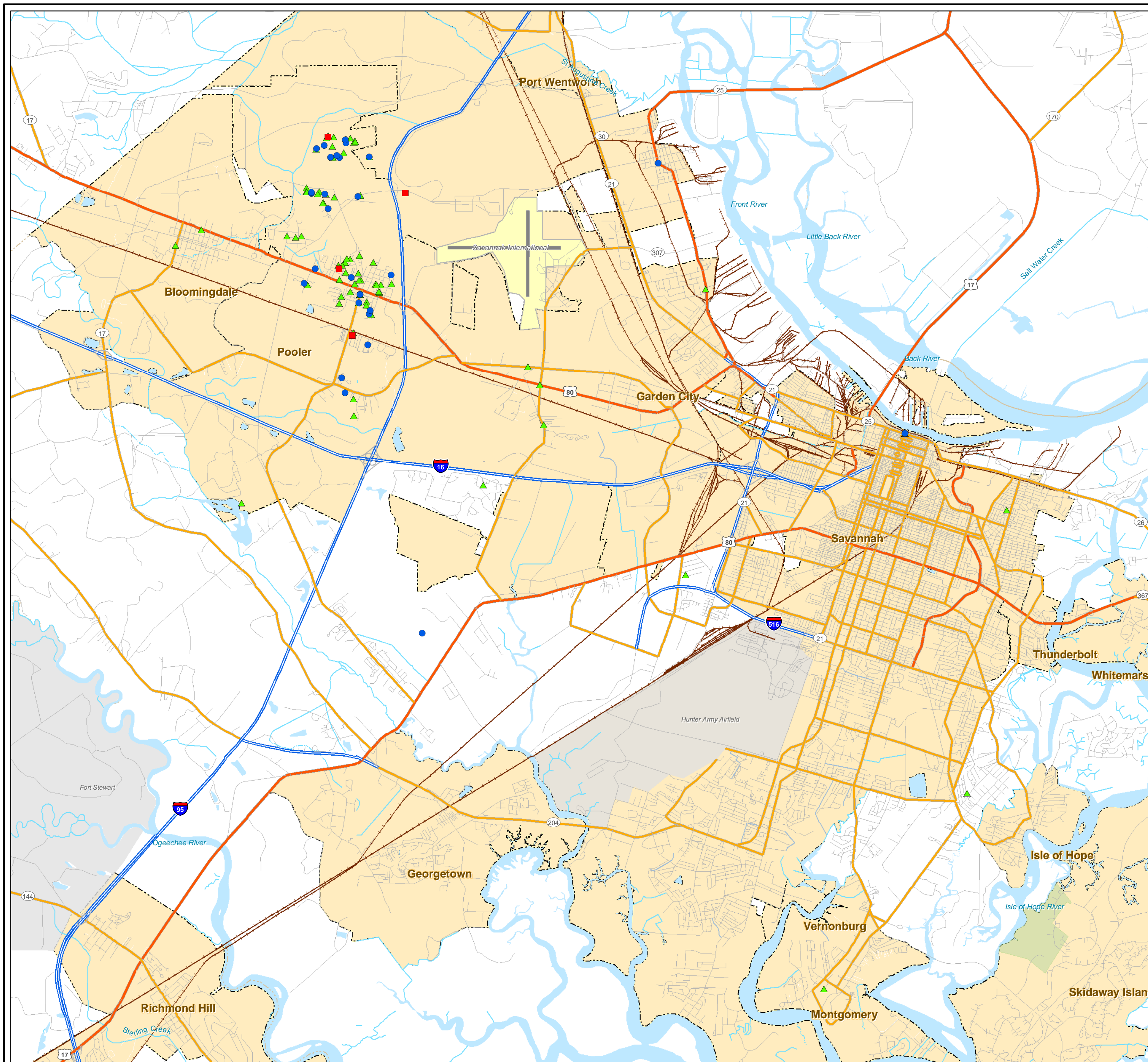
United States Environmental Protection Agency

POOLER ELEMENTARY MERCURY SPILL  
POOLER,  
CHATHAM COUNTY  
GEORGIA  
TDD No. TTEMI-05-001-0061

**FIGURE 2  
BUILDING LAYOUT**





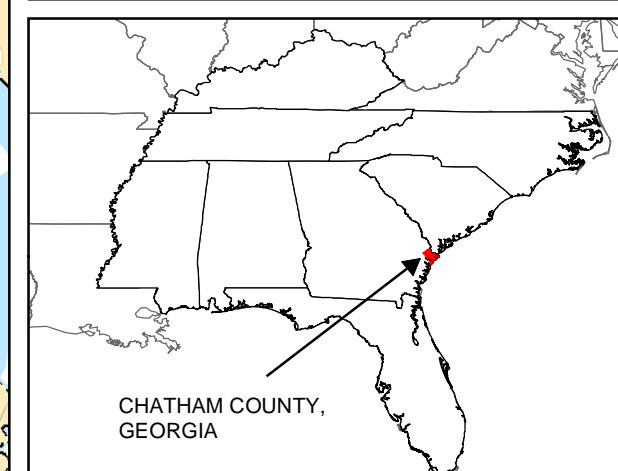


## LEGEND

### Offsite Property Categories

- High Level of Effort
- Intermediate Level of Effort
- ▲ Low Level of Effort

0 3,000 6,000 12,000 Feet  
1:72,000



CHATHAM COUNTY,  
GEORGIA



United States  
Environmental Protection Agency

POOLER ELEMENTARY MERCURY SPILL  
POOLER,  
CHATHAM COUNTY,  
GEORGIA  
TDD No. TTEMI-05-001-0061

**FIGURE 3**  
**OFFSITE PROPERTY**  
**ASSESSMENT LOCATIONS**



## **APPENDIX B**

### **LOGBOOK NOTES (55 Sheets)**



**TETRA TECH**

TTEMI-05-001-0061 (Pooler Elementary Mercury Spill)  
TTEMI-05-001-0063 (Holly Street Mercury Spill)



"Outdoor writing products for outdoor writing people."



RECYCLABLE

"Rite in the Rain" - A unique All-Weather Writing paper created to shed water and enhance the written image. It is widely used throughout the world for recording critical field data in all kinds of weather.

Available in a variety of standard and custom printed case-bound field books, loose leaf, spiral and stapled notebooks, multi-copy sets and copier paper.

For best results, use a pencil or an all-weather pen.

a product of

**J. L. DARLING CORPORATION**

Tacoma, WA 98424-1017 USA  
(253) 922-5000 • FAX (253) 922-5300  
[www.RiteintheRain.com](http://www.RiteintheRain.com)

Item No. 391

ISBN 1-932149-22-8

©

US PAT NO: 6,863,940



6 32281 39111 1

Tetra Tech



"Rite in the Rain"

ALL-WEATHER

**JOURNAL**

No. 391

Pooler Elementary  
School

June 2008

POOLER ELEMENTARY MERCURY SPILL

TTEMI-05-001-0061

"Rite in the Rain"  
ALL-WEATHER WRITING PAPER



Name \_\_\_\_\_

Address \_\_\_\_\_

Phone \_\_\_\_\_

Project \_\_\_\_\_

## CONTENTS

PAGE	REFERENCE	DATE
	Ulysses Bryant - Chief of Police	
	Michelle Cortez - GA EPD	
	Caroline Gooden-Jelks - Principal	
	G. W. Simmons - Fire Chief	
	Ashley Fields - Firefighter (Lead us thru school)	
	OTis J. Brock III - Chief Operating Officer	
	for school district	
	Chip Grefski - Emergency Manager for District	
	Robert (Bob) Simms - Environmental Restoration	
	Response Manager	
	Jim Phillips - Public Health	

6/11/08

Poder Mercury Spill

BF

2240 - START arrived @ fire station for meeting

w/ EPA

- Est. amount of mercury spilled (1 tsp) ~ 1 lb.
- 6/11/08: students cleared out at 2:00 PM; classes cancelled tomorrow (6/12/08) → All from Class 2
- 18 students and 1 teacher checked out + questioned
- Some Hg spilled in closet of classroom 2 and between there + the gym + cafeteria
- Morana Env. picked up the vial of Hg and fire dept. Hazmat suits + gloves
- Custodians have cleaned the ~~area~~ cafeteria
- Check brooms + mops used by janitors
- Scan shoes + clothing

2315 Arrived at School: Scan stuff personal items + vehicles

Unit 149 ~~unit~~ calibration %R = 11

- Checked vehicle of Mark Daniels - 1998 Chevy Suburban; Daniels turned off HVAC system to the school

All readings in ng/m<sup>3</sup>

DS Breathing = 4      DS Backseat = 1  
 DS Floorboard = 4      Breathing  
 PS Floorboard = 2

- Checked vehicle of Wing Chiang  
 1989 Toyota Pickup  
 DS Breathing = 1      DS Floor = 2

BF

6/11/08

PS Breathing = 0

PS Floor = 0

Bag w/ shoes = 350

Bag w/ clothes = 180

2nd Bag w/ clothes = 10

Alice White - Counselor

- shoes were below hazardous limits but still detectable
- ~ 1300

Jackie Haskew - Asst. Principal

- shoes: ~~800~~ 500
- pockets: 1700-2500
- had vial in pocket

- Vehicle of Alice White - Toyota Tundra

DS Breathing = 68      DS Backseat = 82

DS Floor/<sub>seat</sub> = 18-37      PS Breathing = 46

- Vehicle of Cordine Gordon-Jelks - Toyota Camry

DS Breathing = 16

DS Floor/<sub>seat</sub> = 18      PS Floor = 14

DS Backseat Breathing = 23

DS Backseat Floor/<sub>seat</sub> = 37Personal Items: Cordine Gordon-Jelks

Shoes = 1500

Daughter's backpack = 3000

Lunchbox = 3000 → both were bagged

BSC  
for  
BFBSC  
for  
BF

6/12/2008

BF

0015 - Begin scan of school building

Main Entrance Floormat = 231

Side Floormat = 797 (Entrance to Cafeteria)

↳ Floormat was bagged. Beads of Hg  
thought to be present

Just inside cafeteria door: Breathing = 5227

Front Hallway - Breathing = 5885

Front Hallway inside doormat = 8500

Principal's office floor = 8900

" " Breathing = 8400

Main Office / Secretary = 7364

Counselor's office = 8700

Health Clinic Bathroom = 9200

Main Office Bathroom = 8700

Main Hallway Girls Bathroom = 5300

Janitor's closet next to Girls Bathroom ~ 40000

Room next to Girls Bathroom = 7175 (Storage)

Room 1: Gray 5th = 3400

Boys Bathroom = 5700

Room 11: Hattrich 5th = 9600

Room 2: Proto 5th = 14000

Room 10: Doubleday 4th = 6100

Room 3: Kaminski 4th =

Room 4: Bradley 4th = 3000

Room 8: Computer = 3800

BSC for  
BF

6/12/2008

BF

Water Fountain between 7 + 8 Rooms =

Room 5 <sup>Spivey</sup> ~~Arndt~~ 1st = 1100

Girls Bthrm. next to Room 7 = 4500

Room 7 = 3300

Room 6 = 3000

Boys next to Room 6 = 5700

Inside mat next to Room 6 = 20,000-25,000

Breezeway between Wings 1 + 2 = background

Hallway - Wing 2 = 3000 (at door)  
= 4100 (further inside)

Electrical Room = 4300

Janitor's Closet = 50000

Room 28 = 2500

Room 29 = 1400

Room 30 = 1500

Room 27 = 3200

Women's Bathroom = 2900

Men's Bathroom (SR on school map) = 3900

Room 31 = 4900

Room 26 = 674

Doormat inside Wing 2 = 10000

" outside " " = 3000

Doormat outside gym = 16000

gym = 72000

Doormat outside Wing 3 = 3300

BSC for  
BF

6/12/2008

BF

Wing 3 Hallway = 482 just inside doorway  
= 1635 further down hallway

Room 22 = 1100

Room 23 =

Room 21 = 2000

Room 24 = 1500

Room 25 = 871

Room 20 = 1100

Janitor's closet next to Rm. 20 = 2500

↳ Key didn't open; reading taken from  
floor just outside

Workroom = 732

Electrical closet next to Wkrm. = 1000

Boys Bathroom " " " = 776

Girls " " " = 577

Inside doormat next to wkrm. = 2000

Outside doormat " " " = 2000

Media Center = 679

Wing 4 = 500 just inside door

Room 16 = 23 on outside mat  
= 225 inside

Room 17 = 160

Room 18 = 150

Room 33 = 4

Room 35 = 200

BSC  
BF

6/12/08

BF

0145 Completed initial sweep of school; briefed  
CEMA, school staff, + public officials

Webster has authority to coordinate cleanup

Try to get into residences. Principal is best  
contact

Morning Briefing set for 0900

0220 START offsite

B. Lork

6/12/08

Parker Mercury Spill

BF

0700 START onsite

Unit 149: Calibration % R = 7.

0820 Scan personal items / staff clothing

Caroline Gordon-Jelks - Principal

Bag 1 = 4100  $\text{ng}/\text{m}^3$ 

Bag 2 = 2500

Bag 3 = 98000

Mark Daniels - Janitor

Bag 1 = 255

Bag 2 = 120

Joe Burke - Custodian

Bag 1 = 29000

Bag 2 = 34000

Earnest Taylor - Custodian

Bag 1 = 15000

Thomas Whittaker - PE Teacher

Bag 1 = 3000

Mike Proto - 5<sup>th</sup> grade Teacher of child

Bag 1 = 7000 that brought Hg

Bag 2 = 600

Bag 3 = 7000

Allie White - Counselor

Bag 1 = 16000

Bag 2 = 4700

Jackie H

BP

6/12/08

BF

Jackie Haskell - Asst. Principal

Bag 1 = 13400

Yong Cooper - Custodian

Bag 1 = 2020

0925 - Morning briefing with EPA, START, CEMA, & GAEPD,  
Public Health

- Env. Restoration L.L.C. contracted to clean up Hg

- Plan: to scan staff vehicles, school buses,  
- Set up scanning station onsite for concerned  
parents and staff- Staff clothing will be kept for the day at  
vented to try and lower Hg levels- Home inspections will be done ~~on~~ for  
students and staff most likely to have been  
contaminated- Addresses of staff with readings  $> 10,000 \text{ ng}/\text{m}^3$ 

1) Joe Burke

290 Shearouse Rd.

Gwynn, GA 31312

912-728-3065

2) Earnest Taylor

65B Court

Savannah, GA 31404

912-234-7428

BSC for  
BF



6/12/00

BF

Yong Cooper  
152 Parrington Rd.  
Pooler, GA 31322  
912-292-4511

Alice White  
313 Manden Rd.  
Pooler, GA 31322  
912-429-3391

Caroline Gordon-Jelks  
129 Tittleist Circle  
Savannah, GA 31419  
Cell: 912-657-5453  
Home: 912-920-4700

Jackie Haskew  
1162 Village Lake Dr.  
Pooler, GA 31322  
912-604-2372

Scan of Staff Vehicles: Mike Proto: Nissan Xterra  
D.S. Breathing = 42 (Broth) PS = 115  
(Floor) PS = 70

BLC for BF

6/12/00

BF

Thomas Whittaker - Silver Nissan Xterra  
DS Breathing = 66  
DS Floor = 111

Earnest Taylor - 1989 Dodge Dynasty  
DS Breathing = 40  
DS Floor = 40

Joe Burke - Dodge Ram  
DS Breathing = 280  
DS Floor = 280

1015 Entering school with Env. Restoration to mark off rooms; Env. Restoration sets up staging area in modular classrooms; Begin cleaning high priority areas (janitor's closets, Room 2)

1200 Scanned buses that transported children from site

Bus #	Concentration (ppm)
0834	30
05-25	14
0437	7
0601	6
0114	19
0427	17
0138	16

BLC for BF

6/12/08

BF

Clothes + personal items

Dean - School Nurse

Bag 1: 8335

Bag 2: 3700

1300 Press Conference

1330 Take pictures of main hallway (Wing 1)

Unit 441 calibration 90R = 17

1400 Set up venting area for all staff clothing

1415 START Fung + EPA Webster offsite to scan houses of Gordon-Jelks and Burke and source home

1445	Scan Main Hall Janitor's office + Health Clinic after cleaning:	Pre-cleaning	Post-cleaning
	Janitor's closet	40,000	1450
		9200	9200
	Health Clinic	<del>1450</del>	1320

1530 Scan taken:

Janitor's closet = 9200

Health clinic = 9800

Room 2 ~ 20000 around desk + closet

Room 20 = 114 Room 22 = 54

Room 25 = 300

Room 24 = 41

Rm. 21 = 76

Rm. 23 = 60

BSC for 66

6/12/08

BF

1645 - Visible Hg in closet and rug of room 2; carpet and some ties will be removed

- Health clinic + janitor's closet in Wing 1 have been emptied + cleaned

- ER L.L.C. have started the janitor's closet in Wing 2

1700 Evening briefing

- Actually bagged desk of student that brought Hg

- Hg found + disposed of in Sharps bucket of nurses clinic

- Source home was screened; family will be relocated while home is cleaned

- Jackie Haskew's home was screened; it was clean

1805 START offsite

B. Forby

6/13/08

Peeler Mercury

BF

0700 START onsite

Unit 175 Calibration R% = 5

0730 Scanned wings 3 and 1. Wing 3 is cleared for complete ventilation. Wing 1 is coming down but work continues in Room 2

0900 Scanned vehicles and personal items of all teachers and staff

1100 Scanned vehicles + personal items of parents and children

< 1000 - items returned to owner

10,000 ~~>~~ 1000 - items kept at school to ventilate overnight

> 10,000 - items ventilated and ~~room~~ recommend <sup>that</sup> owners have homes checked

1445 Scanned gym and wings 2+3

All readings in wing 3 < 100,

Gym: South door = 2300

East door = 8100

ER begins cleaning gym

1730 START leaving the school

Going to scan source house: scanned clothes that family wanted to take with them to relocation site

Unit 175 Calibration % R = 5

BSC  
cor  
BF

6/13/08

BF

12 bags of clothes scanned

10 bags > 1,000  $\mu\text{g}/\text{m}^3$

2 bags < 1,000  $\mu\text{g}/\text{m}^3$

1850 Screen Marty Marvel's home

416 W. Whattery

1930 @ 1206 Estates Way

Screened Ansley Anderson's bookbag = 3200  $\mu\text{g}/\text{m}^3$

↳ bag sent back to school

ER cleaned boy's bedroom + laundry

room, All furniture + items were staged in backyard; Several loads of Hg found under freezer in laundry

room; ER will wipe down both

rooms with HGK; heat house

overnight and vent in the morning followed by screening

2200 START offsite

BSC  
cor  
BF

6-14-08

Poster Meeting

0700 START onsite

Lumex unit 175 - %R = 10

6/15/08

0900 % check on lumex #25  
%R = 2

0912 Begin screening school

2106 START PAUL PAYS AND ERIC

ADMINISTERED COMPLETED MEASUREMENT

CLEARANCE IN WINGS 3+4 OF POOLER  
ELEMENTARY school.2115 START PAUL PAYS AND ERIC ADMINISTERED  
WENT off-site.

Check off 6/15/08

6/16/08

0910 % check on Lumex #25  
%R = 5

0927 START BEGIN CHECKING SCHOOL RECORDS

TAKEN FROM WING 2. ALL RESULTS ARE  
IN NANOGRAMS PER CUBIC METER (ng/m<sup>3</sup>)Fennby to Montgomery 226 ng/m<sup>3</sup> avgBik Finkley to Spivy 153 ng/m<sup>3</sup> avg

Bantley to Martin 228

Elton to Payne 209

Gray Cub to Fennby 133

6/16/08

Gray F.16 Cub to Fennby 208 ng/m<sup>3</sup> avg

Plumtree in Gresham Bldg 243

Gray 75

Prato 72

Fennby to Montgomery (B) 262

Natteiche 226

Doubleday to Bantley 214

Tan 200

Home School to Pounds 203

School Psychicks 179

Spivy to Schrambeck 65

Elton to Payne (B) 88

1<sup>st</sup> Gray to Witham Students 78

to Regent Lands

Awards Classroom 28 Wing 2 81

Requested Files from Counselor's Office 80

Requested Files from Principal's Office 31

Classroom 27A 31

Classroom 27B 77

Special Info Office - Files from Desk 65

1105 Lumex Screening completed

1345 START DIED FUNK AND PAUL PAYS

BEGIN LOGGING AND PHOTOGRAPHING

PEPS

ITEMS CONTAMINATED ITEMS FOR

DISPOSAL FROM WINGS 1+2

6/16/08

6-16-08

1430 EPA requested START to enter Room 27 in Wing 2 to remove 10 gfl bags from a storage closet for an awards ceremony this evening. The bags were removed from the room and checked for <sup>PEPS</sup> anything edible <sup>PEPS</sup> or that would melt. Candy suckers and glue sticks were removed from the bags. The bags were placed <sup>PEPS</sup> in boxes and set in the sun for 30 minutes.

1530 START PAUL PANG conducted a % check on the LUMEX #610. %R = 7.

1615 The bags were placed two in a box (for 5 boxes of 2 bags each) and covered for 10 minutes.

1630 START PAUL PANG BEGAN SCREENING THE 5 boxes and 1 trash bag (containing 10 glue sticks and 10 candy suckers).

Box	Results (ng/m <sup>3</sup> ) Avg
Rm 27A	63
Rm 27B	29
Rm 27C	48
Rm 27D	41
Rm 27E	44

Garbage Bag w Glue  
Sticks & Candy 42

PEPS 6/14/08

6/16/08

1655 The bags were turned over to the EPA to be given to the teacher <sup>PEPS</sup> requesting the bags. The glue sticks were returned to the bags, but the candy suckers were disposed of and replaced.

1700 LUMEX #610 ~~PEPS~~ %R = 19

1930 START PAUL PANG END PHOTOGRAPHING AND LOGGING OF CONTAMINATED ITEMS FOR DISPOSAL FROM WING 1. DUE TO CAMERA MEMORY CARD BEING FULL.

2020 START PAUL PANG OFF-SITE.

Paul PANG  
16 June 08

6/17/08

1055 PERFORMED % check on LUMEX #25.  
% R = 3

GARBAGE Can 1	17	ng/m <sup>3</sup> avg
GARBAGE Can 2	18	
DESK 1	26	
DESK 2	72	
DESK 3	33	
DESK 4	55	
VCR/2 REMOTES	30	

NOTE: SCREENING OF CONTENTS OF ROOM 2 IN Wing 1 began at 1120. The contents of Room 2 were REMOVED and placed on polyethylene B sheeting outside of the building so ERS could RECLEAN Room 2. START PAUL PANG STOPPED SCREENING at 1150 to check on the air sample in Room 104 of Candlewood Suites on SO Avenues Ave.

1215 DEPARTED JCP FOR CANDLEWOOD SUITES.

1225 ARRIVED AT CANDLEWOOD SUITES Room 104. Pump was still operational and the temperature was 76.1°F.

1345 START RESUMED SCREENING CONTENTS of Room 2 from Wing 1.

Paul Pang 6/17/08

CHAIR 1	26	ng/m <sup>3</sup> avg
CHAIR 2	22	
CHAIR 3	8	
CHAIR 4	14	
CHAIR 5	39	
LAMP 1	32	
BAG 1	117	
BAG 2	25	
CHAIR 6	<del>13</del> 13	
STOOL 1	21	
STOOL 2	11	
CHAIR 7	5	
4 STACK CHAIRS A	<10	
4 STACK CHAIRS B	146	
6 STACK CHAIRS A	<10	
4 STACK CHAIRS C	65	
4 STACK CHAIRS D	29	
BAG 3	6171	
BAG 4	114	
BAG 5	323	
BAG 6	243	
BAG 7	27,820	
BAG 8	88	
BAG 9	4646	
BAG 10	214	
PG025 6/17/08		

6/17/08

BAG 11	26,640	ng/m <sup>3</sup> Avg
STORAGE CONTAINER 1	260	
STORAGE CONTAINER 2	119	
STORAGE CONTAINER 3	25	
COMPUTER MONITOR 1	20	
BAG 12	3600	
BAG 13	950	
BAG 14	5430	
BAG 15	2977	
BAG 16	2735	
BAG 17	371	
BAG 18	477	
BAG 19	2075	
BAG 20	651	
BAG 21	46	
BAG 22	285	
BAG 23	563	
BAG 24	208	
BAG 25	45	
BAG 26	445	
BAG 27	221	
BAG 28	1131	
BAG 29	5155	
BAG 30	210	
BAG 31	1364	
PEPES	6/17/08	

BAG 32	152	ng/m <sup>3</sup> Avg
BAG 33	1045	↓
<del>BAG 34</del>	<del>PEPE</del>	
<del>BAG 35</del>	<del>PEPE</del>	
<del>BAG 36</del>	<del>PEPE</del>	
<del>BAG 37</del>	<del>PEPE</del>	
<del>BAG 38</del>	<del>PEPE</del>	
<del>BAG 39</del>	<del>PEPE</del>	
<del>BAG 40</del>	<del>PEPE</del>	
<del>BAG 41</del>	<del>PEPE</del>	
<del>BAG 42</del>	<del>PEPE</del>	
<del>BAG 43</del>	<del>PEPE</del>	
<del>BAG 44</del>	<del>PEPE</del>	

1825 Lumexs #25 and #610 were low on battery power and ceased to read properly. SCREENING of the bags was ended for the day.

1910 START PAUL RAY WAS OFF-SITE.

Paul Ray  
6/17/08

6/18/08

0725 Performed % check on Lumex #610  
% R = 7

0755 Began screening Rooms 2 and 3  
of Wing 1.  
Rm 2 Results (ng/m<sup>3</sup>)  
Results are logged on school map  
given to Didi Fung.

0910 Began screening gymnasium.  
Results logged on school map  
given to Didi Fung.

1100 Began mercury clearance using  
Lumex #610 in Wing 2

1345 Screening A/C unit in <sup>room</sup> Room  
workroom of Wing 3. A/C unit  
could not be screened because  
it was not operational. A/C  
unit with no power was 232 ng/m<sup>3</sup>  
ng.

1355 Resumed mercury clearance of  
Wing 2.

1642 Screened bags taken from Room 2  
in Wing 1 for mercury contamination.  
Bags contain WWII memorabilia for  
return to a school teacher.

*[Signature]* 4/18/08

1650 Bagged WWII items returned to  
Mike Prots screened 269, 307, 256,  
264, 282 ng/m<sup>3</sup>

Address: 418 Copper Creek Circle  
Pooler, GA 31322  
(912) 713 0516

1744 Screened buffing machines used  
in the gym for mercury  
contamination prior to return  
to rental company. The results  
of the screening are 9575 ng/m<sup>3</sup> and  
13,650 ng/m<sup>3</sup>. The bags covering  
the <sup>pages</sup> ~~scrubbers~~ buffing machines  
were labelled with their  
corresponding results.

1944 Screened Wing 1 Rooms 2 & 3 with  
Lumex for mercury concentrations.  
Results are located on School map.

1944 Completed mercury clearance using  
the Lumex #610 for Wing 2. All  
sampling results were <1000 ng/m<sup>3</sup>  
<sup>pages</sup> + during the 8-hour sampling period.

2010 Start Paul Fung off-site.

*[Signature]* 4/18/08



6/19/08

0830 Start Paul Reys was on-site.

0900 BEGAN PHOTOGRAPHING AND LOGGING  
CONTENTS OF Wing 1 + 2 for

Disposal.

1145 ~~1000~~ ~~FIVE~~ COMPLETED PHOTOGRAPHING  
AND LOGGING MATERIALS FROM WING  
1 FOR DISPOSAL.1940 - JT, JM @ Wing 1 w/ Lumenex. HVAC off  
Main Entry Way South Entrance  
Lumenex -  $357 \text{ ng/m}^3$ East Entrance =  $469 \text{ ng/m}^3$ 

Mailbox Area - Spike at 4,500 @ floor

Breathing zone - 500-700

Cart wheels - 2,500

Floor E of Trophy Case 2,200

Floor S " " " 200

All breathing zone readings  $< 1,000$  @  
mailbox area.

# Cart removed to visitor staging area 3 at bld

Hallway (central portion of wing) - 250

PBP

6/19/08

Room 2 Average -  $67 \text{ ng/m}^3$  in breathing area  
- from doorwayRoom 3 - <sup>160</sup>~~200~~ @ doorway  
Cbset - Average -  $68 \text{ ng/m}^3$ 

- Lumenex bat. died.

1957 - Exit Wing 1

2000 - Lumenex charging  
- End of day

JT John Townsend

"Outdoor writing products for outdoor writing people."



RECYCLABLE

"Rite in the Rain" - A unique All-Weather Writing paper created to shed water and enhance the written image. It is widely used throughout the world for recording critical field data in all kinds of weather.

Available in a variety of standard and custom printed case-bound field books, loose leaf, spiral and stapled notebooks, multi-copy sets and copier paper.

For best results, use a pencil or an all-weather pen.

a product of

J. L. DARLING CORPORATION

Tacoma, WA 98424-1017 USA  
(253) 922-5000 • FAX (253) 922-5300

[www.RiteintheRain.com](http://www.RiteintheRain.com)

Item No. 391

ISBN 1-932149-22-8

©  
US PAT NO: 6,863,940



6 32281 39111 1



"Rite in the Rain"®

ALL-WEATHER

JOURNAL

No. 391

POOLER ELEMENTARY MERCURY SPILL

ITEM I-05-001-0061

**ALL-WEATHER WRITING PAPER**



Address \_\_\_\_\_

Phone \_\_\_\_\_

Project \_\_\_\_\_

Clear Vinyl Protective Slipcovers (Item No. 30) are available for this style of notebook. Helps protect your notebook from wear & tear. Contact your dealer or the J. L. Darling Corporation

## PAGE

## REFERENCE

DATE \_\_\_\_\_

[illegible]

2

6/12/08

~~1206~~ ESTATES. Single family residence. Ranch style.

Living Rm. Front entrance B.A.  
4175 ng/m<sup>3</sup>

Laundry Room B.A.  
7,000 ng/m<sup>3</sup>

shelves L.R. 12,000 - 14,000

Laundry Room. Laundry on floor  
33,000

Laundry Room inside cabinet  
5,000

Washing Machine with wet clothes  
51,000

dryer with clothes 3,800

Laundry basket 8,200

6/12/08<sup>3</sup>

Laundry Room. Vacuum cleaner  
8,000 ng/m<sup>3</sup>

Kitchen B.A. 4,500 ng/m<sup>3</sup>

Kitchen sink drains 4,300

Kitchen trash 5,500

Child's Room B.A. 4,900

Child's Room Floor Carpet up to 8,000

Child's Room Trash can 5,000

Child's Room Desk top 5,200

Child's Room Book bag 7,700 on bottom

Child's Room Shoes in corner  
2 pair sneakers 5,700

4 6/12/08

Child's Room bed cover and  
pillow 5,600

Child's Room Chest B.A. 4,300

Child's Room Toy box 5,700

Child's room shelving 6,000

Child's room top desk drawer  
5,500

Older child's room B.A. 5300

Older child's room bed ~5,000

Older child's room closet B.A. ~4,000

5 6/12/08

Mother's room B.A. 5,600

mother's room bed cover 5,600

mother's room closet 4,900

mother's Room shoes by door 5,700  
"multiple pairs"

master bath off mother's  
room Floor mat 6,000

bath of mother's room  
B.A. 5,000

Main bath 5,800

Main bath tub drain 5,800

Hallway closet B.A. 3,400

Double door hallway "hot water"  
5,100

6 6/12/08

Back porch. Clothing from  
previous day @ school.  
mother's and son's together  
9,000 in open bag.

mat on back porch 300 ng/m<sup>3</sup>

Table on back porch 25 ng/m<sup>3</sup>

162 Village Lake Drive 6/12/08<sup>7</sup>  
Asst. Principal home.

2-story, new construction  
with garage.

Carport carpet mat to entry 12 ng/m<sup>3</sup>

Carport entry just inside 13 ng/m<sup>3</sup>

mat just inside carport door 13

washing machine 20 ng/m<sup>3</sup>

dryer 9

master bedroom and remainder of  
first floor general screen 10-15 ng/m<sup>3</sup>  
except play room

Playroom 10 ng/m<sup>3</sup>

upstairs office 15 ng/m<sup>3</sup>

upstairs bath 12 ng/m<sup>3</sup>

6/12/08

upstairs playroom 11 ng/m<sup>3</sup>Kids bedroom 14 ng/m<sup>3</sup>Vehicle (KIA) 10 ng/m<sup>3</sup>

6/13/08

122 Ashwood Dr. Resident name Belvady

01125

1151 Screen here above ↑

	ng/m <sup>3</sup>
Laundry Rm Breathing air	97
Washing machi	124
Laundry Rm closet	75
Dryer	80
Kitchen Breathing air	90
Living room breathing air	97
shoes (child)	7500 took
backpack	2000 took
- child's bed room breathing air	96
bottom bunk bed.	92
closet	132
- Jileys bed room	89
- bath room	89
- master bedroom	87
master bathroom	84
teddy bears	200

6/13/08

9 Splitleaf Court T.K. Gray

1227

m<sup>3</sup>/m<sup>3</sup>

Outside background 15

Breath air in side laundry rm 500

Washer 2953 - 5400

Dryer 1100

Laundry closet 1100

Backpack &gt;60,000 took

- Kitchen Breathing 1100

- Living rm breathy 1100

- Dining rm breathy 1076

- 1st bed room breathing 1050

- Bathroom breathing 1050

Sink pea trap 1038

- Bed child's room 1026

mat in bedroom child 1050

6/13/08<sup>11</sup>

416 W. Whalley Whalley

Just inside front door breathing = 23

- Living room = 15

- Dining room = 11

- Girl's bedroom = 7

bed = 8

floor around bed = 13

- Bathroom = 9

sink = 9

tub drain = 8

bathroom closet = 17

- 2nd girl's bedroom = 9

carpet = 9

closet = 16

- Parent's bedroom = 15

dad's boots = 13, 20

Washing Machine = 40

Girl's hamper = 37

Mop = 40

Bag of clothes = 143



6-14-08

Parker

Peggy Craft

110 N. Chestnut (Parker) - daycare

1145 - 4 Chestnut St. (Bloomington) - daycare Stephanie SIKS

1245-205 N Skinner (Parker) - daycare Diane Collins

1650-165 1st Ave La Roche Dr. (Parker) - YMCA Aaron Carpio

1110 arrive @ 110 Chestnut St. for Lunex

screening daycare center

Front doorway 52

contact: Peggy Craft

912-748-8913 office

912-748-9001 home

Parker First Baptist church

Assembly Hall

Highway 80

Pastor Otis Hill 912-748-8009

Sec. Cheryl Elton 912-748-7521

Before and After children

congregate there.

Nursery 34 avg nanograms/m<sup>3</sup>

Twos 24 avg

Threes 18 avg

Front Office 31 avg

Break Rm 29 avg

Bathroom 32 avg

Toddlers 31 avg

Fours 55 avg

B/C 6-14-08

6-14-08

Parker First Baptist church

Assembly Hall 4 Avg nanograms/m<sup>3</sup>

Ladies Restroom 5 Avg

Mens Restroom 6 Avg

1205 4 Chestnut St.

Little Miracles Learning Center

Bloomington, GA

contact: Stephanie SIKS

912-659-9997 cell

Ambient 21 nanograms/m<sup>3</sup> Avg

PRE-K Classroom 5

3yr old Rm 4

Babies Rm 5

2yr old Rm 3

Woodlows 3

Office 4

Bathroom 3

Kitchen 5

Hallway 4

Van Door 8

Driver Door/Seat 9

Passenger Double Door 8

1254 205 N. Skinner Ave

First Steps Pre-School

B/C 6-14-08

Diana Collins 912-748-4426 office  
912-450-0013 home

6-14-08

208 N. Skunk Creek Ave.

Ambient	15 nanograms/m <sup>3</sup>	avg
Reception	21	avg
East Age 3 Rm	21	avg
Infants + Toddlers	21	avg
Age 2 Rm	22	avg
Age 3 Rm West	17	avg
Spars Rm by Kitchen	19	avg
Kitchen	25	avg
Bathroom	16	avg
Laundry Rm	16	avg
4 yr Rm	12	avg
After School Rm	12	avg
Storage/Bathroom	11	avg
Small Bathroom	10	avg

1700 arrive @ Candlewood Suites (50 Stephen S Green<sup>Dr</sup>)

to screen room + 104 at Lums

Main TV room	1,100 - 1,200 ppt
Bedroom	1,100 - 1,200 ppt
Bathroom	1,040 ppt
Blankets	2,300 ppt (bagged)

\* With Air On

BFL 6-14-08

6-14-08

Contact: Lori Sheahan

Cell - (912) 210-0105

With Air off: *	2,300 - 2,900
Main TV Room floor	2,300 PPT
Bedroom	1,200 PPT
Kid shoes	1,200 PPT
Kid shoes (Crocs)	1,800 PPT (bagged)
bedsheet	1,600 PPT (bagged)

1825 arrive @ 165 Isaac G LaRoch Rd

- meet w/ Aaron Corbis (YMCA) - said kids were restricted to gym only

(912) 547-7106

Ambient = 5 ng/m<sup>3</sup>gymnasium (main area) = 5 ng/m<sup>3</sup>boys room = 5 ng/m<sup>3</sup>

2010 return to Candlewood Suites (Rm 104) for additional screening / bagging items

2215 offsite

BFL 6-14-08

6-15-08 Pooler Mercury

0850 arrive @ 328 Moore St. for screening  
%R = 8 (Tt Lumar)

0930 back @ 328 Moore to clean & re-screen  
washing machine - 800 ng/m<sup>3</sup> after cleaning  
note: also screened 136 Nondina - cleared

BSC 6-15-08

6-16-08 Pooler Mercury

~~The Place at Pooler BSC~~

~~908 Smith Angers St BSC~~

~~Atlanta Smalls BSC~~

~~Room 106 and dining room BSC~~

~~Kelly Spillard BSC~~

~~Att - 748-6870 BSC~~

0730 onsite - IC briefing @ Pooler Elementary

0820 back @ 328<sup>more</sup> to rescreen washer %R = 4

- reading = 848 ng/m<sup>3</sup> (avg) - all below 1,000 ng/m<sup>3</sup>

- Ops Chief said to run 1 cycle of CS102

solution & have owner flush w/ 2 cycles

of just water

- cleared

0850 back @ 133 Nondina to rescreen washer

- reading = 950 ng/m<sup>3</sup> (avg) - spike to 1,100 ng/m<sup>3</sup>

- ran 1 more cycle of CS102 solution & asked

owner to cycle 2 loads just water &

we will rescreen later today

- owner asked about towels from washer - w/ 9

rescreen @ IC & try to bring back

1300 arrive @ 7 Tea Olive Circle to screen house

1350 - screening complete - bagged clothes removed

BSC 6-16-08

6-16-08 Pooler Mercury

1355 back @ 133 Nordin to re-screen washer - reading =  $2,500 \text{ ng/m}^3$  - Op Chert said to remove & buy new  
- also rescreened SUV - cadillac - clear

1450 @ 400 Copper Creek Circle for screening  
- all readings  $< 15 \text{ ng/m}^3$  - rug =  $2.3 \text{ ng/m}^3$

1540 arrive @ 5 Roberts Court for Linex screening - all rds  $< 20 \text{ ng/m}^3$

1605 @ 305 Tietjen St. for Linex screening  
1610 @ 305 Tietjen St. for Linex screening

1640 - all rds  $< 40 \text{ ng/m}^3$

return to school/16

1740 @ 800 Railroad Ave (Savannah) for screening  
- all clear - highest rdy in house =  $100 \text{ ng/m}^3$   
- pink backpack =  $159 \text{ ng/m}^3$

BSC 6-16-08

6-17-08 Pooler Mercury

0815 @ 105 Prewood Dr. for screening 7/8 = 6  
- clear

0855 @ 159 Nordha for screening

- bath mat =  $200 \text{ ng/m}^3$

- vacuum decant  $850 \text{ ng/m}^3$  - bagged & put outside

0930 @ 225 Rothwell for screening

- washer =  $200 \text{ ng/m}^3$

1100 @ 65 B Court (Savannah) for screening  
 $< 20 \text{ ng/m}^3$

1330 @ 16 Arbor Circle for screening  
 $< 5 \text{ ng/m}^3$

afternoon screening

157 Arbor Village

162 Arbor Village

134 Arbor Village

163 Arbor Village

BSC 6-17-08  
ac

6-18-88 Poster Mercury

- 0700 onsite - IC briefing
- 0755 @ 15B Rothwell for screening - cleared
- 0830 return to IC (school)
- 0850 @ 607 Clift Dr. for screening - cleared
- 0835 return to IC
- 0940 screened source house (wall of family room & laundry room) - 1,250 - 2,000  $\text{ng}/\text{m}^3$  @ base of wall in laundry room & 100 - 200  $\text{ng}/\text{m}^3$  on wall of family room - return to IC
- 1100 @ 608 Mandan for screening
- 1125 return to IC
- 1300 Rescreened washer @ 134 Arbor Village Rd
- reading = 39  $\text{ng}/\text{m}^3$
  - also rescreened bagged clothes vented outdoors by owner
  - 2 cleared
  - 3 greater than 2,500  $\text{ng}/\text{m}^3$  - owner will continue to heat outside & EPA will rescreen tomorrow after 12 pm
- 1330 @ 483 Copper Creek Circle for screening
- ~ 75  $\text{ng}/\text{m}^3$  throughout house
  - washer ~ 400; 2 bags in garage > 20,000 removed
  - book bag in family room ~ 600  $\text{ng}/\text{m}^3$
  - book bag in dining room ~ 600  $\text{ng}/\text{m}^3$
  - upstairs bath sink ~ 275  $\text{ng}/\text{m}^3$  (washed black shirt)
- BSC 6-18-88

6-18-88 Poster Mercury

- 1510 @ 503 Gleason Ave for screening
- ~ 95  $\text{ng}/\text{m}^3$  throughout house
  - 162  $\text{ng}/\text{m}^3$  on TV room floor
  - 105  $\text{ng}/\text{m}^3$  on couch in TV room floor
  - 160  $\text{ng}/\text{m}^3$  on remote control
- 1710 Arrived @ 312 Silver Brook Circle Pooler, GA.
- The washing machine was screened. it was 11,250  $\text{ng}/\text{m}^3$ .
- 1745 Blake Langford gave verbal permission to treat the washing machine.
- 1800 @ 503 Gleason for re-screening after air conditioning was shut off for 1 hour
- readings lower - highest was up to 1500  $\text{ng}/\text{m}^3$  in boy's bedroom in a plastic tote filled w/ toys - all other rds ~ 60-65  $\text{ng}/\text{m}^3$  w/ up to 95  $\text{ng}/\text{m}^3$  in TV room carpet & couch
- 1855 @ house/garage <sup>directly</sup> across from front of school to screen garage - resident concerned w/ <sup>cleanup</sup> activities, not related to mercury spill - rds 2-4  $\text{ng}/\text{m}^3$  in & around garage
- 1930 @ 312 Silver Brook Circle to check on progress of washer cleanup - ER using CS102 solution to
- BSC 6-18-88

6-18-08 Foster Mercury

clean washer -

also screened clear back bag in garage (mt)

- up to 2,000 <sup>ng/m<sup>3</sup></sup> on straps - < 100 <sup>ng/m<sup>3</sup></sup> on clear plastic - owner's rep. said to just throw it out - bagged & removed

- ER rep coming to clean washer

1950 logex @ IC

BSC 6-18-08

6-19-08 Foster Mercury

0700 onsite - IC briefing

0830 @ 312 Silver Brook Circle to rescreen

\* washer = 2,300 <sup>ng/m<sup>3</sup></sup>

- waiting for ER rep to re-clean washer

0940 @ 139 Pineal Crossing for screening

- cleared

1100 @ 1602 Dean Forest Road (Nassau Woods

Trailer Park) - Savannah - Lot I 1 for screening -

- cleared

1340 @ 6 Cassidy Ct. for screening

- cleared ~ 250 <sup>ng/m<sup>3</sup></sup> in shower drain

1425 @ 7 Pinhurst Lane for screening

- cleared - 15 <sup>ng/m<sup>3</sup></sup> in vacuum

- house ~ 2-5 <sup>ng/m<sup>3</sup></sup> throughout

1530 @ 114 Timberland Gap Rd. for screening - 1 bag (4,000) thrown out per owner

1640 @ 214 Symons St. for screening

1730 @ 312 Silver Brook Circle to rescreen

washer = 800 <sup>ng/m<sup>3</sup></sup> - cleared & ran one

more cycle of water for good measure

1900 IC briefing

2030 offsite

BSC 6-19-08

6-20-08 Pooler Mercury

0700 START onsite

%R = 6

- clearance testing for:
  - Wing 1 - cleared
  - Gymnasium - failed

BSC 6-20-08

6-21-08 Pooler Mercury

0700 START onsite

%R = 5

- checking high rdgs in wing 1 (boys & girls rooms, reception, information specialist, mail room)
- clearance testing:
  - Gym - failed
- bugged item returns

BSC 6-21-08

6-23-08 Pooler Mercury

0730 onsite

- set up for bagged item return
- clearance testing for GYM & outlying modular trailers

10 R = 2

BSC 6-23-08



Pooler Hwy 95 Left Longhorn

"Outdoor writing products for outdoor writing people."

Benton Blvd Home Depot <sup>not Post</sup> shell on R side  
Left Benton Blvd 1/2 mile Left across  
Arm Wave Depot

Town Center Blvd 1/2 mile  
N Godby Station R 1 mile  
Traffix Circle 3/4  
White Dogwood Lane

122



RECYCLABLE

"Rite in the Rain" - A unique All-Weather Writing paper created to shed water and enhance the written image. It is widely used throughout the world for recording critical field data in all kinds of weather.

Available in a variety of standard and custom printed case-bound field books, loose leaf, spiral and stapled notebooks, multi-copy sets and copier paper.

For best results, use a pencil or an all-weather pen.

a product of

J. L. DARLING CORPORATION

Tacoma, WA 98424-1017 USA  
(253) 922-5000 • FAX (253) 922-5300  
[www.RiteintheRain.com](http://www.RiteintheRain.com)

Item No. 391

ISBN 1-932149-22-8

©

US PAT NO: 6,863,940



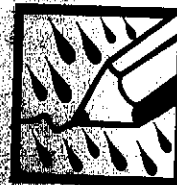
6 32281 39111 1

Pooler Elem Hg Spill 3

Holly Rd Hg Spill

TTEMI-05-001-0061

TTEMI-05-001-0063



"Rite in the Rain"®

ALL-WEATHER  
JOURNAL

No. 391

Address \_\_\_\_\_

Phone \_\_\_\_\_

Project Pooler Elementary

Figure 1. The effect of the concentration of the *Agrobacterium* suspension on the transformation efficiency of *Agrobacterium* strains.

[illegible][illegible][illegible]

2 6/14/08 Sunny  
~~Shooter~~ Sholar & Berry  
Karen Winfield (912.220.9760 c)  
120 Whitetop wood lane  
Pooler, GA 31322  
912.330.4200 (h)  
David Winfield (7yrs) 1st grade Rm 6  
James Winfield (6yrs) kids kinder Rm 30  
Don Winfield (husband)  
David did not attend dance, though  
was not in gym. He did go to  
cafeteria.

Entrance:  $3 \text{ ng/m}^3$   
Living Rm:  $2 \text{ ng/m}^3$   
kit. rug:  $3 \text{ ng/m}^3$   
family rm (tv):  $6 \text{ ng/m}^3$   
book:  $11 \text{ ng/m}^3$   
Laundry:  $15 \text{ ng/m}^3$   
David's rm:  $19 \text{ ng/m}^3$ : Bedding:  $22 \text{ ng/m}^3$   
Boys bathrm:  $24 \text{ ng/m}^3$   
James rm:  $27 \text{ ng/m}^3$ : Bedding:  $28 \text{ ng/m}^3$   
parents rm:  $31 \text{ ng/m}^3$ : Bathrm:  $33 \text{ ng/m}^3$   
washer:  $46 \text{ ng/m}^3$ : dryer:  $36 \text{ ng/m}^3$

6/14/08  
TS

3 6/14/08  
TS  
~~TS~~ Andrew Barr (912 Sholar & Berry 748.6258)  
122 White Dogwood lane  
Pooler, GA 31322  
Sharon (wife)  
Aaron (13yrs) 7th grade (doesn't go to Pooler)  
↳ did not attend dance  
Sarah (9yrs) 3rd grade  
↳ did not go to dance  
↳ went to cafeteria & gym  
Entrance:  $10 \text{ ng/m}^3$   
Dining:  $8 \text{ ng/m}^3$   
Living:  $7 \text{ ng/m}^3$   
kit. dining:  $6 \text{ ng/m}^3$   
Kitchen:  $5 \text{ ng/m}^3$   
Garage entrance:  $5 \text{ ng/m}^3$   
stairs to upstairs:  $2 \text{ ng/m}^3$   
upstairs hallway:  $5 \text{ ng/m}^3$   
parents bedrm:  $1 \text{ ng/m}^3$   
guest rm:  $0 \text{ ng/m}^3$   
Laundry rm:  $1 \text{ ng/m}^3$   
Kids bathrm:  $0 \text{ ng/m}^3$   
Sarah's rm:  $1 \text{ ng/m}^3$ : bedding:  $1 \text{ ng/m}^3$   
↳ closet:  $4 \text{ ng/m}^3$   
Aaron's rm:  $4 \text{ ng/m}^3$ : bedding:  $4 \text{ ng/m}^3$   
↳ closet:  $5 \text{ ng/m}^3$

<sup>TLS</sup>  
6/14/08 Sholer + Berry

melvin Lucky (912.220.8111 c)  
108 Pampas Drive

Pooler, GA 31322

Patsy (wife) 912.441.2627 c

Aaron (11yr - 5th)

↳ attended dance, he broke out in rash;  
father took him to Win Army Hospital;  
rash cleared; no respiratory issues

entrance: 23 ng/m<sup>3</sup>

living: 34 ng/m<sup>3</sup>

kit. dining: 34 ng/m<sup>3</sup>

kitchen/laundry: 35 ng/m<sup>3</sup>

hallway: 36 ng/m<sup>3</sup>

Aaron's rm: 37 ng/m<sup>3</sup>; closet: 36 ng/m<sup>3</sup>

parents rm: 35 ng/m<sup>3</sup>

computer rm: 34 ng/m<sup>3</sup>

Aaron has no more symptoms;  
father feels comfortable his  
son is fine. family is moving  
to Florida.

6/14/08

TLS

6/14/08 Sholer/Berry

Lilly Spilliard (Resident)

The Place at Pooler Nursing home

508 S. Rogers

Pooler, GA 31322

Gloria Small, LPN (912.748.6840)

Fay Tremelling (Lilly's daughter)

Cole Barfield (Fay's grandson) (Fay)

Fay visited Lilly. Dining rm: 10 ng/m<sup>3</sup>

Lilly's rm B10 entrance: 8 ng/m<sup>3</sup>

chair: 9 ng/m<sup>3</sup>

floor: 9 ng/m<sup>3</sup>

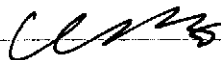
bed: 9 ng/m<sup>3</sup>

6/14/08

TLS

6/15/8

- 0700 Arrive @ ICP. Mtg + Planning
- 0830 Arrive Emily Danham 306 Sycamore  
3 bags of articles collected
- Happy Meal toys
  - Logbook
  - Paper plates/cups from dance
- 0915 Gigis 299 Silverbrook Circle  
- No readings > 1000
- 0940 At Neighbor @ Gigis. Cannot open door w/ spare key owned by Ms Gigis. The owner's of the house are out of town, but gave verbal permission to OSC Sholar over the phone. —  
- Tell them to FedEx working key & we will return. —
- 1030 Alexsil Figueredo 515 Benton Blvd Apt 1920. No readings > 1000
- 1045 At neighbor's apt, but they're not home. Give contact info to Ms Figueredo to deliver. —
- 1115 Arrive at ICP awaiting tasking
- 1145 Bob Kelly 612 Holly Ave  
House is OK, but washing machine > 50K.



6/15/08

- 1230 Alice White 325 & 313 Main  
House OK. Less than 50 throughout.
- 1245 Lunch
- 1315 ICP to receive tasking.  
~~1400~~
- 1330 At Bob Kelly to begin washer cleanup. ER will begin scrub w/ MarcX in level C.
- 1345 3 Conservation Rd. Jumanilla  
House OK. Less than 50.
- 1400 Arrive @ 121 Hunter Lane  
House < 1,000
- 1500 Arrive 115 Busbridge Rd.  
All readings < 1000.
- 1615 Return to Kelly Residence @ 612 Holly to check washer.  
- Resident has vacuumed house & ambient levels > 3500 ng/m<sup>3</sup> throughout house. Washer @ 8500, but has just completed cycle.
- 1630 Have ventilated house. All readings are < 300 ng/m<sup>3</sup>.
- 1640 Closed up house & asked residents to remain outside for 1 hour.

6/15/08

Sam Spencer 912.856.0950 c

121 Hunter Lane

Savannah, GA 31405

Kim (wife)

Patrick (7yrs) Hg autistic, being treated

Anna Brooke (4yrs)

Entrance: 5

Living: 5

Kitchen: 5

Laundry: 5

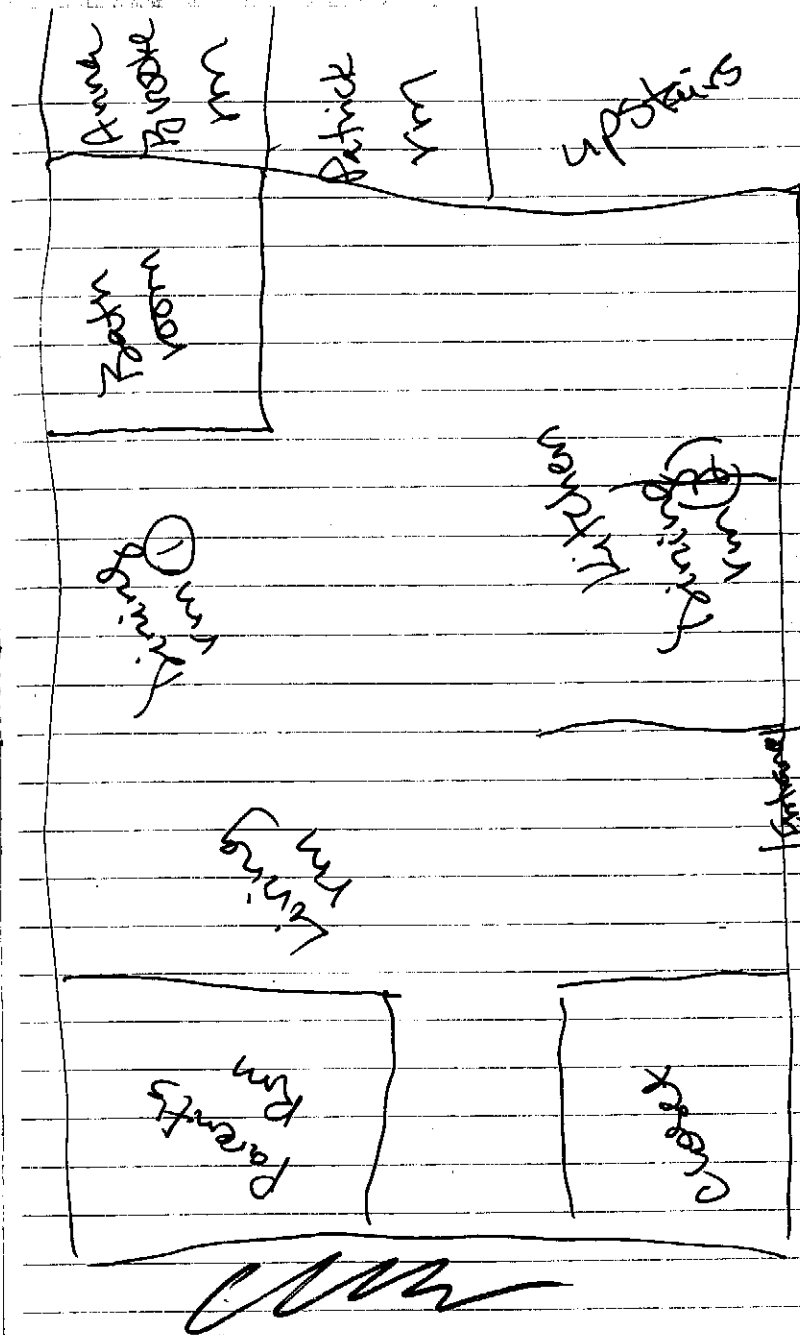
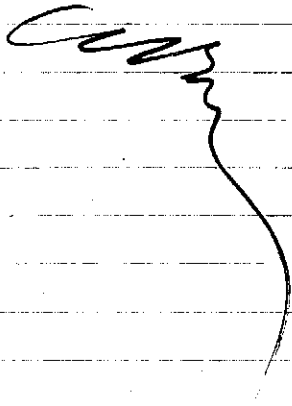
Patrick did not attend dance.

Anna rm 4

Patrick rm: 4

Upstairs: 4

Parents rm: 5



6/15/8

Sarah Jane Doubleday (Teacher)

Team 1 Berry/Sholar/Rodew

115 Busbridge Ct.

Ross (Husband)

No children

Entrance 5

Living Room 7

Kitchen 8

Dining 10

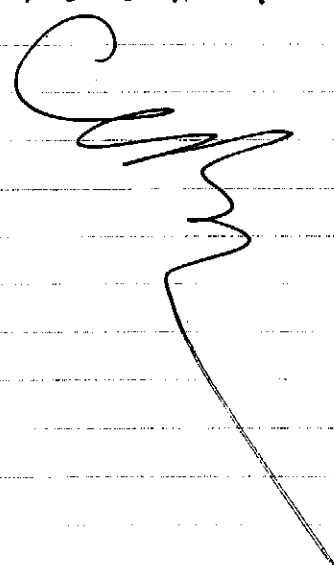
Bath 7

Stairs 8

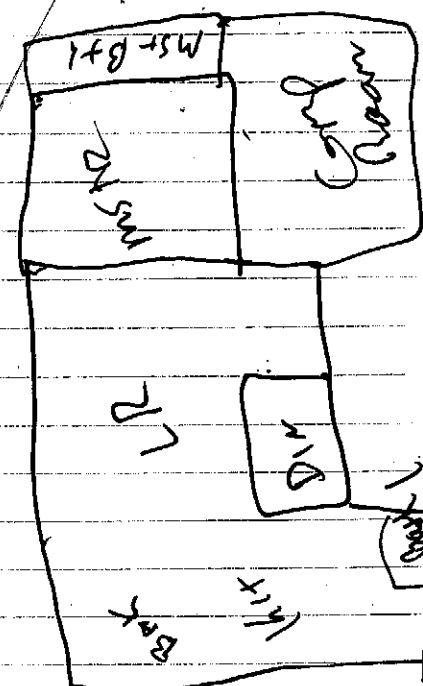
Guest BR 4

MSTR 8

MSTR BT 9



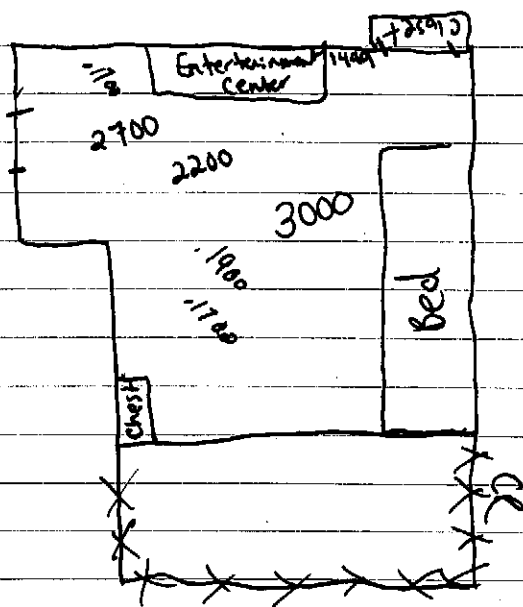
6/15/8



*[Signature]*

06/15/2008  
 1745 Bob Kelley 912-748-7692 (House #)  
 612

### Child's Bedroom



Bedroom = 1700 Ambient

*copy*

06/15/08

1740 Return to Kelly residence.  
 All rooms are  $\approx 300 \text{ ng/m}^3$   
 except for Michael's room  
 which is  $\approx 1700$  ambient.  
 Find several footprints on  
 carpet. ~~copy~~

1800 Instructed by OSC Nigren to  
 vent room to outside & tape  
 seams. ———

1830 Room is vented & sealed.  
 Family allowed to return  
 to residence but asked to  
 remain outside the room until

1950. it is addressed. ———

1650 Return to ICP to download  
 1700 offsite

*copy*



Q

6/16/8

0700 START on site. Prep truck for screenings.

0730 Morning Mtg.

0815 Depart school for screenings.

0900 Arrive 145 Runner Rd

1020 Arrive 10 Tea Olive Cir

1130 Return to ICP

1145 Arrive at Kelly residence

Washer still 750,000 ng

Frigidaire Crown Series

Heavy Duty Super Capacity

7-cycle

Room 58

Rest of house ~200

Close off room + AC will  
recheck after lunch.

1215 Lunch

1245 Back at ICP. Pick up

OSC batch

1305 Arrive at 130 Longleaf Pentris  
residence.~~1345~~

1410 Arrive at Hoffman 103 Nardna Way

1450 Arrive at Garding 115 E. Wharley

Bag + remove contents of vacuum  
can

15

6/16/8

Barrett

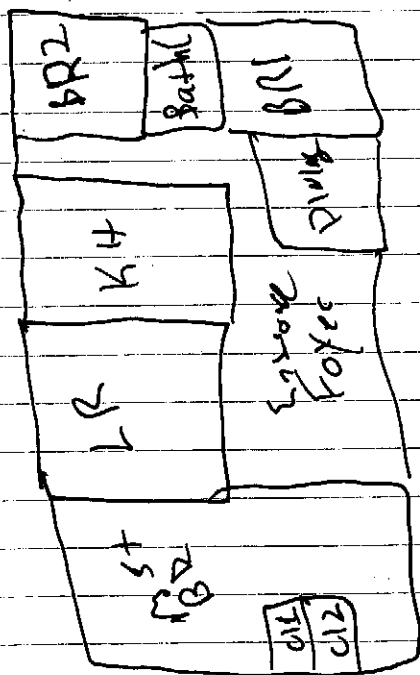
145 Runner Rd

Savannah GA

Entranceway	BZ	8
Living Room	BZ	2
Dining	BZ	10
Kit	BZ	6
Laundry	BZ	4
Washer		11
BR 1	BZ	2
Bath 1	BZ	3
BR 2	BZ	1
Master BR	BZ	2
closet 1	BZ	1
Closet 2	BZ	1
Office	BZ	12
Pool Room	BZ	13
Bad Room doses	BZ	97
Storage	BZ	10

Cez

~~6/18~~ 6/16/8  
145 Rumer Rd



*C. W. H.*

6/16/8

1515 McNeely's @ 115 E. Whalley  
report next door neighbor's  
daughter was wearing black T-shirt.  
Resident, Gina Davis, gives  
permission to Subash Patel to  
screen residence.

- Collect shoes + other  
clothing worn to dance. Will  
bring to ICP for documentation

1525 Return to Kelly residence.  
Michael's BR @ 700 ng/m<sup>3</sup>, but  
Tony 78°. Will rescreen in  
another hour.

1600 At Kiminski residence

1325 Hwy 80 Apr 505

1630 At Kelly residence. Room is  
911 ng/m<sup>3</sup>. OSC Sims ops  
to remove carpet.

1650 OSC Patel + START Berry  
begin bagging personal items  
Only 2 bags show elevated  
levels but all are <1000 ng.  
Suggest Mr. Kelly air them out.

*C. W. H.*

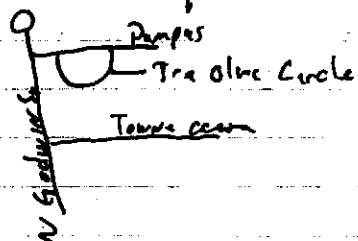
6/16/8

Elizabeth Casde

10 Tea Olive Circle

912 660 8344

- Tra Olive &amp; Holpompas



Elizabeth 34

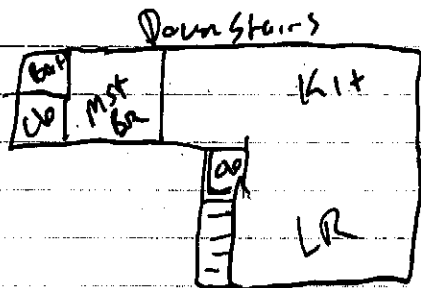
Caroline 10

Casey 7

Max 3

Harrison 1.5

- Has vacuumed + laundered.



6/16/8

Entrance BZ 12

Lr BZ 10

Lr closet BZ 9

Kitchen BZ 7

Max's ~~BR~~ BZ 7

Mst. Clo BZ 7

Shoes 'sniffed' no deflections ~ 7

Washer - 98

Playroom BZ 5

Bath upstairs BZ 3

Max's Room BZ 3

Bedding 3

Casey's R BZ 4

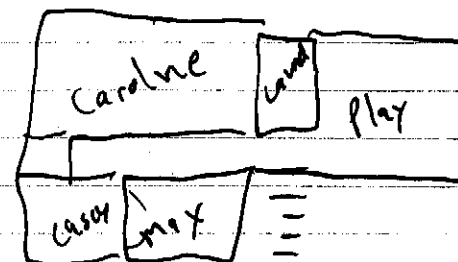
Casey's Closet BZ 1

Casey's Bedding 5

Caroline's Room BZ 1

Bagged shoes 585 (hated &amp; bagged)

Vacuum 4



6/16/8

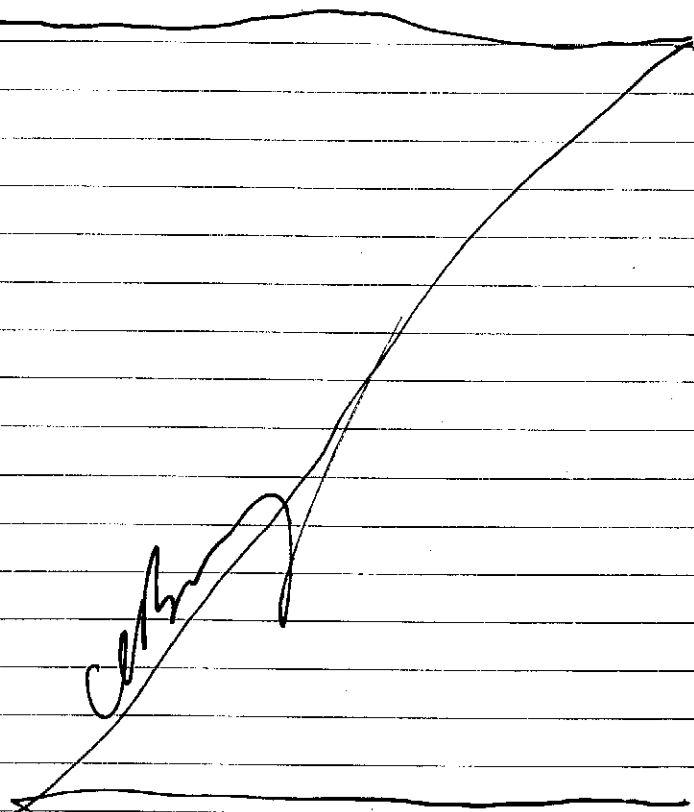
1700 ER arrives + begins to  
wipe down items.

1730 Level C - ripping up  
carpet + padding.  
Concrete subfloor.

1805 Pulling up tackling.

1830 Wiping down with Merc X

1845 Back at ICS



6/17/08

0740 Calibrated Pump 13903 for  
mercury clearance sample at  
612 Holly (Kelly Residence)

R1	.51	1pm
R2	.52	
R3	.51	
R4	.51	
R5	.52	
R6	.52	
R7	.51	
R8	.51	
R9	.51	
R10	.51	
Ravg	.51	1pm

0800 Arrive 612 Kelly

Start time 20804

House ambient =  $\approx 180$

Room = 63 w/ venting active.

- Tape up vent + tell residents  
to turn AC off if they leave the  
house. Temp today will reach  
near 100 w/ heat index.

Room T = 79.4 °F

*Paul E. [Signature]*  
6/17/08

6/17/08

0900 Calibrated Pump #A-2 For mercury  
clearance at Rm 104 at Candlewood  
Smelter Located at 50 Airways  
Ave.

Reading	Result (ppm)
R1	.61
R2	.50
R3	.61
R4	.61
R5	.50
R6	.50
R7	.52
R8	.61
R9	.50
R10	.49
Ravg	.50

0910 Set up in center of suite  
between couch & bar.

Start time = 0914

T = 78.1°F

0930 Return to FCP. Leave site for  
other Hg site at Savannah Clinic

1130 Return to IC. Lunch

1215 Return to IC. Checked on Candlewood  
Pump. Running still.  
cer

6/17/18

1330 At Letia Delles, 1314 Osprey  
Pont Circle for screening

1400 At Claire Parsons 123 Pampas Dr.  
Washer, Child's Bathroom floor  
& clothing contaminated > 1000.  
she wants to keep some clothing  
that's > 1000 but < 10,000.

Vacuum is 2100 she will also  
keep & bake outside.

Washer at 1314, but wet clothing  
still inside. ~~0222~~

1550 Kelly Fortson 259 Pampas Dr  
Collected 1 bag of clothing

1615 At 123 Pampas Claire Parsons  
Washing Machine

Seas Kenmore model 41744/02300  
Front loader

Heavy Duty 2way tumble  
washing stainless steel.

Parsons cell 4122576549

1645 612 Kelly to receive Carulite tube.

T = 76.9°F. STOP TIME = 1647

Post Cal on next page

6/17/8

1700 Post Cal of 6/2 Kelly

R1 .52

R2 .52

R3 .52

R4 .53

R5 .53

R6 .53

R7 .53

R8 .53

R9 .53

R10 .53

Avg .53

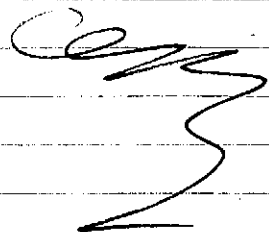
Morning Avg .50

Average Flow Rate .515 g

START TIME = 0914 6804

END TIME = 1647 1647

Total Run = 7:33 8:43

LEAK TEST INLET OK  
OUTLET


6/17/8

1755 Candlewood Room 104

Postcal

# LPM

1 .49

2 .50

3 .50

4 .50

5 .50

6 .50

7 .50

8 .50

9 .50

10 .50

Avg .50

START TIME 0914

STOP TIME 1756

Run TIME 8:42

Avg Flow Rate .50 + .50 / 2 = .50

6/2 Holly

 $8 \times 60 = 480 + 43 = 843 \text{ min} \times .515 \text{ L/min} =$ 

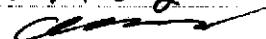
434.145 L

6/2 Holly Candlewood

 $8:42 = 842 \text{ min} \times 0.50 = 421 \text{ L}$ 

1845 Arrive @ Fed Ex

1900 Out for day



6/18/8

0700 Arrive at ICP. Set up trucks.

0730 Morn. mtg.

0815 Get Assignment from Ops

0840 At Wal Mart to get fluids, batteries  
+ SD card for camera, —0845 Arrive @ Parsons to clean  
washer + Bath floor.- Washer is \$26,000, but door  
has been cracked all night.

- Bath is 800 ambient

- Will still wash floor  
while washer runs through cycle.

1000 Arrive at Neil Watson

404 Gleason Ct

912-748-7928

1045 At Parsons, Still Rinsing.  
Bath is venting. Will close up  
+ resample in an hour

1130 Dan Wreaver

321 E Whalley

Pooler GA

912-655-4756

1200 Lunch

1300 Back @ Parsons. ~~Room~~

Backroom 300 ng. Washer

CMM

6/18/8

1300 (cont) is  $\approx 24,000$ .1340 Return to ICP to exchange  
Lumex.

1420 Arrive @ 519 Gleason Ave.

1500 Arrive @ 405 Holly

1615 Arrive @ 411 Sangre de

1800 Arrive @ 115 Dowd St.

1835 Back at ICP. Figuring out  
logistics of demo tomorrow.1900 Recalculation of air sampling  
results. $1L = .001 m^3$ 612 Holly  $434.145L = .434145 m^3$ Lab =  $0.0385 \mu g = 38.5 \mu g .0000385$  $.0000385 = .0000887 \mu g/m^3$  $.434145 = 88.7 \mu g/m^3$ Cardwood =  $42L = 0.42 m^3$ Lab =  $0.0909 \mu g = 0.0000909 \mu g$  $.00000909 \mu g = 0.003159 \mu g$  $0.421 m^3 = m^3$  $= 215.9 \mu g/m^3$ 

2030 Planning meeting over STRET - At site.

6/19/8

- 0700 Arrive @ Site. Prep truck  
 0730 Morning meeting.  
~~0843~~ Arrive @ 123 Lampas, Parsons  
 0845 Residence.  
 - Washer >25,000 ng  
 - bags of clothing 2 are <1,000  
 1 is >5,000  
 - Vacuum still 2100.  
 1010 Arrive 154 Firethorn Lane William  
 Buckley.  
 1120 Arrive 419 Winskill Rd, Heidi  
 Whitton.  
 1140 Return to IL.

~~LATE ENTRY~~

0955 START Dale vonBusch arrives on  
 site. Will overlap w/ C. Berry

*Dale vonBusch*

6/19/08

- 1330 START C. BERRY DEMOBILIZES  
 TO ATLANTA.  
 1334 START D. VON BUSCH AND  
 EPA OSC SUBASH PATEL  
 ARRIVE AT 114 N. SKINNER  
 AVENUE FOR SCREENING  
 1346 FINISH SCREENING J. ANDERSON  
 RESIDENCE  
 1428 START D. VONBUSCH AND OSC S. PATEL  
 ARRIVE AT 4 NIGHT HERON FOR  
 SCREENING  
 1440 LEFT HOUSE OF T. WHITTAKER,  
 POOLER ELEMENTARY P.E. TEACHER.  
 1500 BACK AT MCP FOR FURTHER  
 INSTRUCTIONS.  
 1554 ARRIVE AT 297 SILVER BROOK  
 CIRCLE FOR SCREENING.  
 1620 FINISHED SCREENING RESIDENCE  
 OF BJ FRANKLIN, VACOM HOSE  
 READING ~897 ng. ALL OTHER  
 READINGS ~~>300~~ <300 ng  
 1706 ARRIVE AT 216 PINK DOGWOOD LN  
 FOR SCREENING.  
 BLACK PLASTIC GARBAGE BAG  
 READ >1,100 ng WITH CONT'D



6/19/08

- 1706 LAUNDERED CLOTHES  
REST OF HOUSE < 100 mg.
- 1740 FINISHED AND LEFT HOUSE.  
S. PATEL WILL COME BACK  
WITH TRUCK TO GET BAG OF  
CLOTHES.
- 1820 OSC S. PATEL RETURNED TO  
HOUSE AND COLLECTED BAG  
OF CLOTHES.
- 1836 ARRIVE AT 115 DOWD ST TO  
SCREEN WASHING MACHINE.  
WASHING MACHINE READS  
5,811 mg.
- 1846 LEFT HOUSE, RETURN TO ICP.  
DETERMINE 115 DOWD ST  
WASHING MACHINE NEEDS TO  
BE CLEANED BY ETERS.
- 1917 ARRIVE AT 297 SILVER-  
BROOK TO RE-SCREEN VACUUM  
CLEANER + WASHING MACHINE.
- 1926 LEAVE SILVER BROOK CIR,  
RETURN <sup>DUB</sup> SCREENED WASH  
MACHINE + VACUUM, BOTH  
LESS THAN 280 mg.

CONT'D

6/19/08

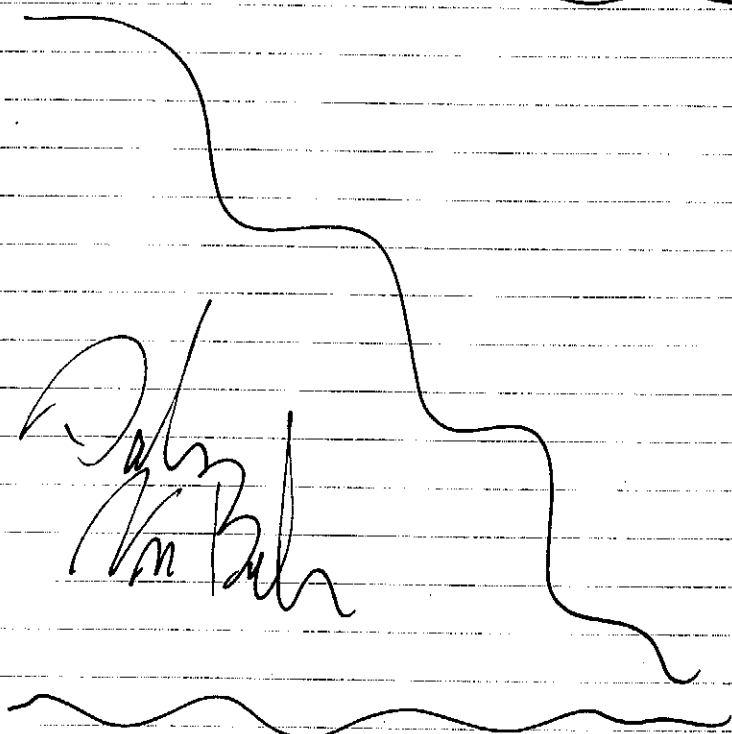
- 1937 RETURN TO 115 DOWD ST,  
ASK OWNER TO SIGN ACCESS  
AGREEMENT.
- 2045 PLANNING MEETING ENDS.  
START OFF-SITE

6/20/08

0700 - START D. VON BUSCH ASSISTS  
IN DISTRIBUTING SCREENED  
ITEMS AT INCIDENT COMMAND  
UNTIL ~ 1600

1600 - START D. VON BUSCH ASSISTS  
B. CROFT IN CLEARING WING  
1 OF POOLER ELEMENTARY.

2245 - START D. VON BUSCH +  
B. CROFT LEAVE SITE,



6/21/

0830 - START D. VON BUSCH ARRIVES  
AT POOLER ELEM. FOR  
INSTRUCTIONS.

0900 - D. VON BUSCH HELPS IN  
PARKING LOT COLLECTING,  
SCREENING, DISTRIBUTING  
ITEMS.

1000 - LEAVE SITE TO SCREEN  
HOME WITH OSC S. PATEZ

1020 - ARRIVE AT 9 SPLIT LEAF  
COURT, SAVANNAH + SCREEN  
HOME AND TRUCK OF MR.  
TONY GRAY.

NOTE: WASHING MACHINE READS  
8114 ng/m

ALSO - VACUUM CLEANER HAS  
1087 ng/m

1120 - WENT TO 2 HAYDEN'S COVE,  
WRONG ADDRESS - SAVANNAH

1150 - ARRIVE AT 9 SPLIT LEAF IN  
SAVANNAH, TAKE ADDITIONAL  
READING IN LAUNDRY ROOM  
OF ~~1150~~ 1,158 ng.

1213 - ARRIVE AT 2 HAYDEN'S COVE  
FOR SCREENING (POOLER, GA)

CONTD

6/21/08

1305 - FINISH SCREENING 2 HARDEN CV

NOTE: WASHING MACHINE READ

1,151 n.

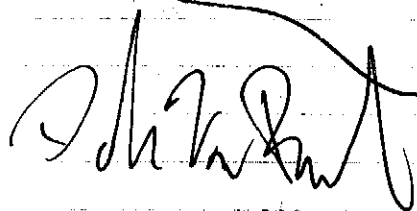
ERRS WILL RETURN TO CLEAN  
WASHING MACHINE.1344 - RETURN TO ICP TO HELP  
WITH ITEM DISTRIBUTION.1458 - ARRIVE 607 BENTON DR,  
RESIDENCE OF PEGGY EMORY  
FOR SCREENING.

ALL NUMBER VERY LOW

1526 - ARRIVE AT JOEY EMORY  
HOUSE AT 1705E HIGHWAY 80.  
ALL NUMBERS LOW.

1548 BACK COMMAND POST.

1730 - OFF SITE - D. VON BOSCH



6/22/08 Pooler Mercury

0900 tour school w/ board members

- reception office - pulled carpet - school  
will replaceWING 1 - re-washed girls/boys bathrooms  
- room 2 - painted - school will handle  
re tiling or other modifications- no scraping painted floors - minor scaper  
okay - school to retile

- room 3 carpet removed - school will replace

WING 2 - janitor closet - drain still hot, but  
breathing air fine - ATSDR approved  
clearance- shelves were removed - will rescreen  
- school will deal w/ it if still hotGym - mats are hot - not being returned  
- painting gym floor, including boys/girls  
bathroom  
- will try clearance tomorrow

WING 3 cleared - minor clearing only

WING 4 cleared

Outlying modules were cleared initially

BSC 6-22-08

6/22/08 Foster Mercury

- A/C filters are all new
- school to be opened to teachers/staff on Tuesday
- rolloffs here until approx Weds/Thurs

10000 begins bagged item return & appraisal value for residents

Dale  
Von Busch

6/22/08

0745 - ARRIVE ON SITE, START DALE VON BUSCH.

0800 - MEETING W/ EPA.

0830 - D. VON BUSCH TO ASSIST WITH DISTRIBUTING ITEMS AND SCREENING NEW ITEMS AS THEY COME IN.

~~1545~~

1645 - START D. VON BUSCH OFF SITE.

Dale  
Von Busch

6/23/08

0800 - START D. VON BUSCH  
ARRIVES ON SITE @ POOLER  
ELEMENTARY.

0830 - START MTG, TASKED  
WITH CLOTHING RETURN &  
TRiage.

ALSO, MOVING ITEMS.

1800 - D. VON BUSCH OFF SITE

Shirley

6/24/08

0745 - ON SITE, D. VON BUSCH.  
POOLER ELEMENTARY

0830 - BREAKDOWN, PACK UP  
PREPARE TO DE-MOBILIZE.  
1645 - OFF SITE FOR DAY.

D. Von Busch

6/25/08

0800 - ON SITE, POOLER ELEM.

1000 - D. VON BUSCH DEMOBILIZES  
FROM SITE, RETURN TO  
CRESTWOOD, KY.

HSC

"Outdoor writing products for outdoor writing people."



RECYCLABLE

"Rite in the Rain" - A unique All-Weather Writing paper created to shed water and enhance the written image. It is widely used throughout the world for recording critical field data in all kinds of weather.

Available in a variety of standard and custom printed case-bound field books, loose leaf, spiral and stapled notebooks, multi-copy sets and copier paper.

For best results, use a pencil or an all-weather pen.

a product of

**J. L. DARLING CORPORATION**

Tacoma, WA 98424-1017 USA  
(253) 922-5000 • FAX (253) 922-5300  
[www.RiteInTheRain.com](http://www.RiteInTheRain.com)

Item No. 391

ISBN 1-932149-22-8

©

US PAT NO: 6,863,940



6 32281 39111 1



"Rite in the Rain"®

ALL-WEATHER

**JOURNAL**

No. 391

POOLER ELEMENTARY MERCURY SPILL

ITEMI-05-001-0061



Project \_\_\_\_\_

[illegible]



6-14-08

LELAND MEADOWS

1709 Team: TERENCE Byrd and Paul Prys

1709 Paul Prys conducted T-R check  
 on <sup>port</sup> mercury analyzer RA-915+  
 #610. T-R=14

1755) START conducts residential mercury  
 analysis at 129 Tithiest Circle,  
 Savannah, GA 31419, Caroline Gordon-JELKS:  
 The Principal of Pooler Elementary.

Location	Reading ( $\mu\text{g}/\text{m}^3$ )
Upstairs Hall Closet	27
Front Door	18
Foyer	19
Half Bath	20
Living Room	21
In-Eat	26
Family (TV)	28
Kitchen	26
Kitchen Closet	26
Laundry	28
Kitchen Pantry	29
Stairs	28
Bedroom (1 <sup>st</sup> L)	27
Bathroom (1 <sup>st</sup> R)	28
Daughter's Bedroom	28
Bedroom (2 <sup>nd</sup> L)	28
2 <sup>nd</sup> Bedroom Closet	28

- P. P. C. 6/14/08

1810; START continues to conduct  
 screening with results listed below:

LOCATION	Reading ( $\mu\text{g}/\text{m}^3$ )
Master Bedroom	27
Master Bathroom	28
Master Closet	27
Coat Closet	27
Miscellaneous Bag #1	34
Miscellaneous Bag #2	39
Miscellaneous Bag #3	36
Garage	23
Shoes/Mat Garage	25

1825; Caroline Gordon-Jelks phone # 912-657-5453

6-14-08

## **APPENDIX C**

### **PHOTOGRAPHIC LOG (29 Pages)**



**TETRA TECH**

TTEMI-05-001-0061 (Pooler Elementary Mercury Spill)  
TTEMI-05-001-0063 (Holly Street Mercury Spill)



**OFFICIAL PHOTOGRAPH NO. 1**  
**U.S. ENVIRONMENTAL PROTECTION AGENCY**

**TDD Number:** TTEMI-05-001-0061

**Location:** Pooler Elementary Mercury Spill  
Pooler, Georgia

**Orientation:** Northeast

**Date:** June 19, 2008

**Photographer:** Didi Fung, Tetra Tech

**Witness:** Brian Croft, Tetra Tech

**Subject:** Main entrance to the Pooler Elementary School on the south side of Wing 1.



**TETRA TECH**

B-1 TDD No. TTEMI-05-001-0061 (Pooler Elementary Mercury Spill)



**OFFICIAL PHOTOGRAPH NO. 2**  
**U.S. ENVIRONMENTAL PROTECTION AGENCY**

**TDD Number:** TTEMI-05-001-0061

**Location:** Pooler Elementary Mercury Spill  
Pooler, Georgia

**Orientation:** East

**Date:** June 19, 2008

**Photographer:** Didi Fung, Tetra Tech

**Witness:** Brian Croft, Tetra Tech

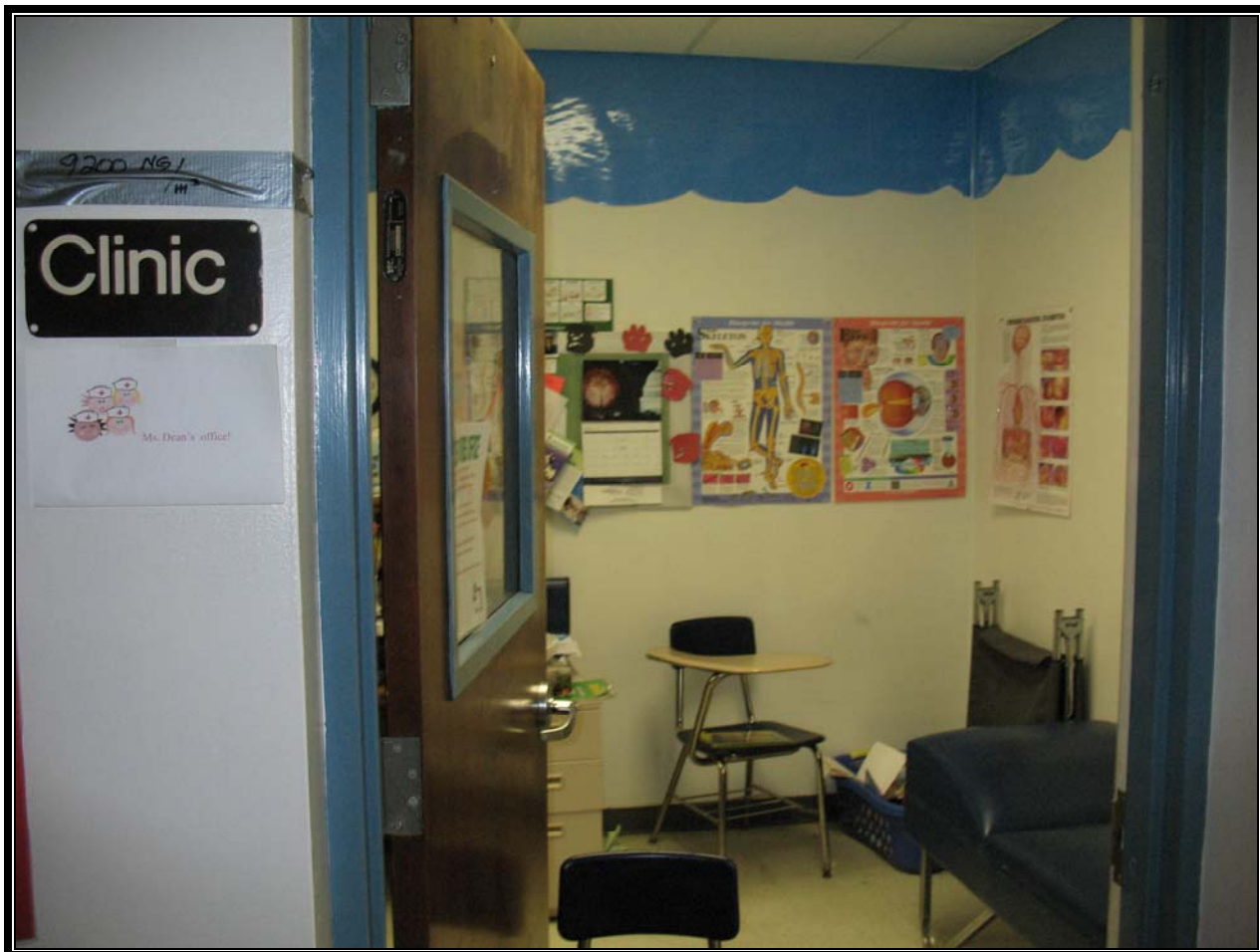
**Subject:** Sign adjacent to the main entrance to the Pooler Elementary School on the south side of Wing 1 that advertised the school dance held in the Whittaker Gymnasium following the mercury spill.



**TETRA TECH**

B-2 TDD No. TTEMI-05-001-0061 (Pooler Elementary Mercury Spill)





**OFFICIAL PHOTOGRAPH NO. 3**  
**U.S. ENVIRONMENTAL PROTECTION AGENCY**

**TDD Number:** TTEMI-05-001-0061

**Location:** Pooler Elementary Mercury Spill  
Pooler, Georgia

**Orientation:** Northeast

**Date:** June 12, 2008

**Photographer:** Didi Fung, Tetra Tech

**Witness:** Brandon Foskey, Tetra Tech

**Subject:** Interior of the Clinic located in Wing 1.



**TETRA TECH**

B-3 TDD No. TTEMI-05-001-0061 (Pooler Elementary Mercury Spill)



**OFFICIAL PHOTOGRAPH NO. 4**  
**U.S. ENVIRONMENTAL PROTECTION AGENCY**

**TDD Number:** TTEMI-05-001-0061

**Location:** Pooler Elementary Mercury Spill  
Pooler, Georgia

**Orientation:** Northeast

**Date:** June 12, 2008

**Photographer:** Didi Fung, Tetra Tech

**Witness:** Brandon Foskey, Tetra Tech

**Subject:** Interior of the Main Office located in Wing 1, which includes the Information Specialists' Office, Conference Room, and Mail Room.



**TETRA TECH**

B-4 TDD No. TTEMI-05-001-0061 (Pooler Elementary Mercury Spill)



**OFFICIAL PHOTOGRAPH NO. 5**  
**U.S. ENVIRONMENTAL PROTECTION AGENCY**

**TDD Number:** TTEMI-05-001-0061

**Location:** Pooler Elementary Mercury Spill  
Pooler, Georgia

**Orientation:** Northeast

**Date:** June 12, 2008

**Photographer:** Didi Fung, Tetra Tech

**Witness:** Brandon Foskey, Tetra Tech

**Subject:** Interior of the janitor's closet in Wing 1. Duct tape attached to wall on the right side of the doorway is visible and labeled with the initial screening result (40,000 nanograms per cubic meter [ $\text{ng}/\text{m}^3$ ]).



**TETRA TECH**

B-5 TDD No. TTEMI-05-001-0061 (Pooler Elementary Mercury Spill)



**OFFICIAL PHOTOGRAPH NO. 6**  
**U.S. ENVIRONMENTAL PROTECTION AGENCY**

**TDD Number:** TTEMI-05-001-0061

**Location:** Pooler Elementary Mercury Spill  
Pooler, Georgia

**Orientation:** Northwest

**Date:** June 12, 2008

**Photographer:** Didi Fung, Tetra Tech

**Witness:** Brandon Foskey, Tetra Tech

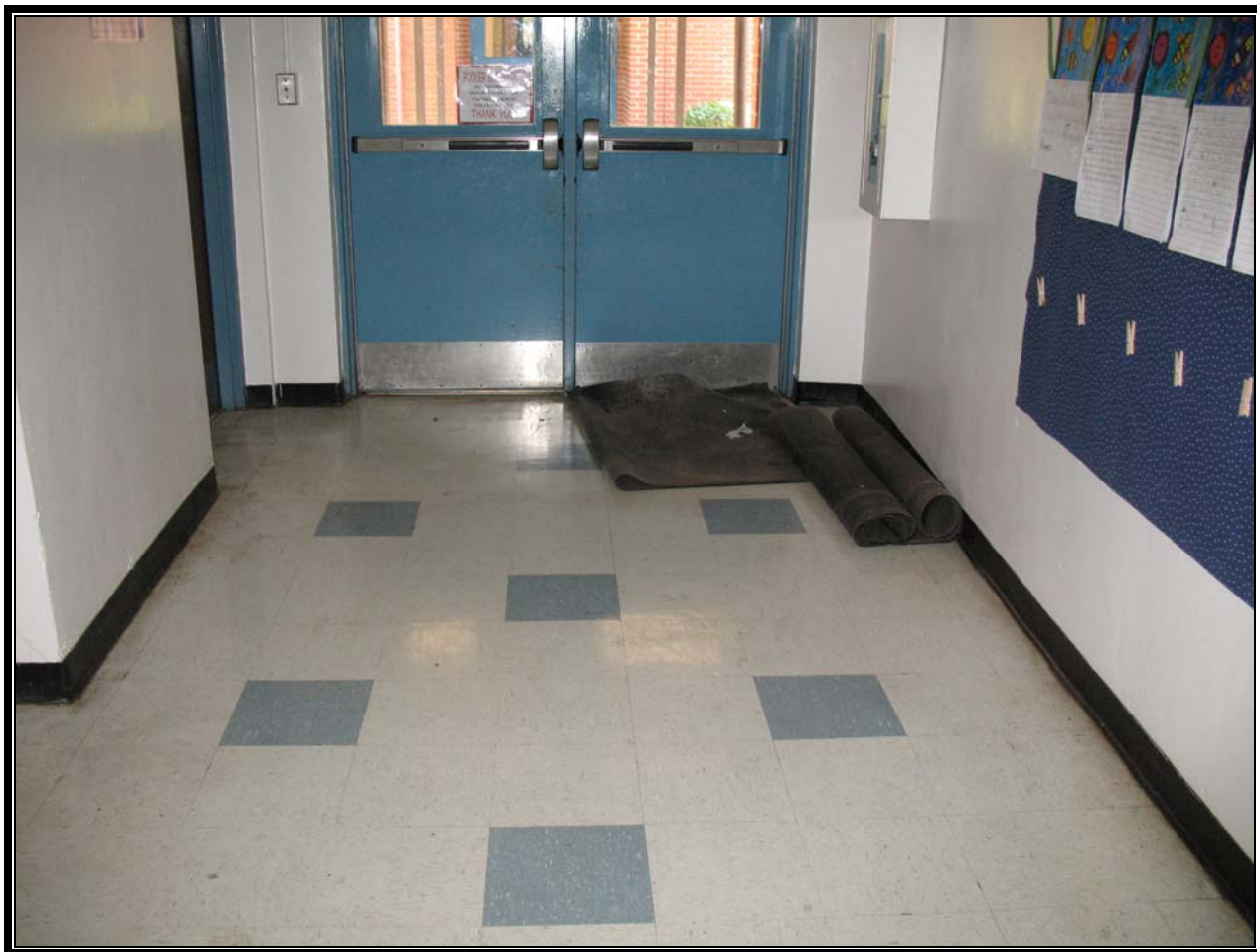
**Subject:** Door to the closet located inside Room 2. The closet was one of the locations where some students played with the mercury and spillage occurred.



**TETRA TECH**

B-6 TDD No. TTEMI-05-001-0061 (Pooler Elementary Mercury Spill)





**OFFICIAL PHOTOGRAPH NO. 7**  
**U.S. ENVIRONMENTAL PROTECTION AGENCY**

**TDD Number:** TTEMI-05-001-0061

**Location:** Pooler Elementary Mercury Spill  
Pooler, Georgia

**Orientation:** West

**Date:** June 12, 2008

**Photographer:** Didi Fung, Tetra Tech

**Witness:** Brandon Foskey, Tetra Tech

**Subject:** Floormats at the western entrance to Wing 1, which were determined to be a common source of mercury vapors and, as such, were later bagged and removed from the building.



**TETRA TECH**

B-7 TDD No. TTEMI-05-001-0061 (Pooler Elementary Mercury Spill)



**OFFICIAL PHOTOGRAPH NO. 8**  
**U.S. ENVIRONMENTAL PROTECTION AGENCY**

**TDD Number:** TTEMI-05-001-0061

**Location:** Pooler Elementary Mercury Spill  
Pooler, Georgia

**Orientation:** South

**Date:** June 12, 2008

**Photographer:** Didi Fung, Tetra Tech

**Witness:** Brandon Foskey, Tetra Tech

**Subject:** Interior of the Media Center located in Wing 2.



**TETRA TECH**

B-8 TDD No. TTEMI-05-001-0061 (Pooler Elementary Mercury Spill)



**OFFICIAL PHOTOGRAPH NO. 9**  
**U.S. ENVIRONMENTAL PROTECTION AGENCY**

**TDD Number:** TTEMI-05-001-0061

**Location:** Pooler Elementary Mercury Spill  
Pooler, Georgia

**Orientation:** Northwest

**Date:** June 12, 2008

**Photographer:** Didi Fung, Tetra Tech

**Witness:** Brandon Foskey, Tetra Tech

**Subject:** Southeast corner of the Whittaker Gymnasium where mercury concentrations greater than 50,000 ng/m<sup>3</sup> were identified.



**TETRA TECH**

B-9 TDD No. TTEMI-05-001-0061 (Pooler Elementary Mercury Spill)





**OFFICIAL PHOTOGRAPH NO. 10**  
**U.S. ENVIRONMENTAL PROTECTION AGENCY**

**TDD Number:** TTEMI-05-001-0061

**Location:** Pooler Elementary Mercury Spill  
Pooler, Georgia

**Orientation:** West

**Date:** June 14, 2008

**Photographer:** Brian Croft, Tetra Tech

**Witness:** Dale Vonbusch, Tetra Tech

**Subject:** Interior of the Whittaker Gymnasium, where mercury concentrations greater than 50,000 ng/m<sup>3</sup> were identified.



**TETRA TECH**

B-10 TDD No. TTEMI-05-001-0061 (Pooler Elementary Mercury Spill)



**OFFICIAL PHOTOGRAPH NO. 11**  
**U.S. ENVIRONMENTAL PROTECTION AGENCY**

**TDD Number:** TTEMI-05-001-0061

**Location:** Pooler Elementary Mercury Spill  
Pooler, Georgia

**Orientation:** West

**Date:** June 19, 2008

**Photographer:** Didi Fung, Tetra Tech

**Witness:** Brandon Foskey, Tetra Tech

**Subject:** Miscellaneous items removed from the janitor's closet in Wing 1 to facilitate cleanup activities there. Items were bagged and later staged outside to allow for heating and venting to occur.



**TETRA TECH**

B-11 TDD No. TTEMI-05-001-0061 (Pooler Elementary Mercury Spill)



**OFFICIAL PHOTOGRAPH NO. 12**  
**U.S. ENVIRONMENTAL PROTECTION AGENCY**

**TDD Number:** TTEMI-05-001-0061

**Location:** Pooler Elementary Mercury Spill  
Pooler, Georgia

**Orientation:** South

**Date:** June 12, 2008

**Photographer:** Didi Fung, Tetra Tech

**Witness:** Brandon Foskey, Tetra Tech

**Subject:** Staging area located between Wings 1 and 2. This area was used to stage items removed from each wing to allow for heating and venting as well as inventorying and screening activities.





**OFFICIAL PHOTOGRAPH NO. 13**  
**U.S. ENVIRONMENTAL PROTECTION AGENCY**

**TDD Number:** TTEMI-05-001-0061

**Location:** Pooler Elementary Mercury Spill  
Pooler, Georgia

**Orientation:** West

**Date:** June 14, 2008

**Photographer:** Didi Fung, Tetra Tech

**Witness:** Brandon Foskey, Tetra Tech

**Subject:** Padded mats removed from the Whittaker Gymnasium to allow heating and venting to occur. The eastern wall of the Whittaker Gymnasium is visible in the background.



**TETRA TECH**

B-13 TDD No. TTEMI-05-001-0061 (Pooler Elementary Mercury Spill)



**OFFICIAL PHOTOGRAPH NO. 14**  
**U.S. ENVIRONMENTAL PROTECTION AGENCY**

**TDD Number:** TTEMI-05-001-0061

**Location:** Pooler Elementary Mercury Spill  
Pooler, Georgia

**Orientation:** Northwest

**Date:** June 21, 2008

**Photographer:** Didi Fung, Tetra Tech

**Witness:** Brian Croft, Tetra Tech

**Subject:** Epoxy paint being applied as a sealant to the floor of the Whittaker Gymnasium.



**TETRA TECH**

B-14 TDD No. TTEMI-05-001-0061 (Pooler Elementary Mercury Spill)





**OFFICIAL PHOTOGRAPH NO. 15**  
**U.S. ENVIRONMENTAL PROTECTION AGENCY**

<b>TDD Number:</b>	TTEMI-05-001-0061	<b>Location:</b>	Pooler Elementary Mercury Spill Pooler, Georgia
<b>Orientation:</b>	Not applicable	<b>Date:</b>	June 21, 2008
<b>Photographer:</b>	Didi Fung, Tetra Tech	<b>Witness:</b>	Brian Croft, Tetra Tech
<b>Subject:</b>	Epoxy paint being applied to the floor of the boy's room in the Whittaker Gymnasium.		



**OFFICIAL PHOTOGRAPH NO. 16**  
**U.S. ENVIRONMENTAL PROTECTION AGENCY**

**TDD Number:** TTEMI-05-001-0061

**Location:** Pooler Elementary Mercury Spill  
Pooler, Georgia

**Orientation:** Northwest

**Date:** June 15, 2008

**Photographer:** Didi Fung, Tetra Tech

**Witness:** Brandon Foskey, Tetra Tech

**Subject:** EPA Mobile Command Post staged in the parking lot on the eastern side of the school. The area of the blue canopy, visible in the background, was used for the inventorying and screening personal items as they were brought to the school by local residents.



**TETRA TECH**

B-16 TDD No. TTEMI-05-001-0061 (Pooler Elementary Mercury Spill)



**OFFICIAL PHOTOGRAPH NO. 17**  
**U.S. ENVIRONMENTAL PROTECTION AGENCY**

**TDD Number:** TTEMI-05-001-0061

**Location:** Pooler Elementary Mercury Spill  
Pooler, Georgia

**Orientation:** West

**Date:** June 13, 2008

**Photographer:** Didi Fung, Tetra Tech

**Witness:** Brandon Foskey, Tetra Tech

**Subject:** Area used for the inventorying and screening personal items as they were brought to the school by local residents. Outlying modular trailers are visible on each side of the area and the Whittaker Gymnasium is visible in the background.



**TETRA TECH**

B-17 TDD No. TTEMI-05-001-0061 (Pooler Elementary Mercury Spill)





**OFFICIAL PHOTOGRAPH NO. 18**  
**U.S. ENVIRONMENTAL PROTECTION AGENCY**

**TDD Number:** TTEMI-05-001-0061

**Location:** Pooler Elementary Mercury Spill  
Pooler, Georgia

**Orientation:** South

**Date:** June 17, 2008

**Photographer:** Didi Fung, Tetra Tech

**Witness:** Brandon Foskey, Tetra Tech

**Subject:** Tetra Tech START using a Lumex to conduct screening for mercury vapor concentrations associated with personal items contained inside the plastic bag.



**TETRA TECH**

B-18 TDD No. TTEMI-05-001-0061 (Pooler Elementary Mercury Spill)



**OFFICIAL PHOTOGRAPH NO. 19**  
**U.S. ENVIRONMENTAL PROTECTION AGENCY**

**TDD Number:** TTEMI-05-001-0061

**Location:** Pooler Elementary Mercury Spill  
Pooler, Georgia

**Orientation:** Southwest

**Date:** June 15, 2008

**Photographer:** Didi Fung, Tetra Tech

**Witness:** Brandon Foskey, Tetra Tech

**Subject:** Media interview being conducted with EPA On Scene Coordinator James Webster and EPA Community Involvement Coordinator Sherryl Carbonaro. The eastern side of Wing 1 is visible on the right side of the photograph.



**TETRA TECH**

B-19 TDD No. TTEMI-05-001-0061 (Pooler Elementary Mercury Spill)





**OFFICIAL PHOTOGRAPH NO. 20**  
**U.S. ENVIRONMENTAL PROTECTION AGENCY**

**TDD Number:** TTEMI-05-001-0061

**Location:** Pooler Elementary Mercury Spill  
Pooler, Georgia

**Orientation:** Northeast

**Date:** June 13, 2008

**Photographer:** Didi Fung, Tetra Tech

**Witness:** Brandon Foskey, Tetra Tech

**Subject:** Tetra Tech START conducting vehicle screening using a Lumex. START personnel were staged in the school parking lot on a daily basis to perform screening of vehicles and personal items as they arrived from teachers and local residents.



**TETRA TECH**

B-20 TDD No. TTEMI-05-001-0061 (Pooler Elementary Mercury Spill)



**OFFICIAL PHOTOGRAPH NO. 21**  
**U.S. ENVIRONMENTAL PROTECTION AGENCY**

**TDD Number:** TTEMI-05-001-0061

**Location:** Pooler Elementary Mercury Spill  
Pooler, Georgia

**Orientation:** Northeast

**Date:** June 17, 2008

**Photographer:** Brandon Foskey, Tetra Tech

**Witness:** Erik Armistead, Tetra Tech

**Subject:** A public forum was held at the West Chatham Middle School in an effort to educate the public on the dangerous effects of mercury and give parents and teachers a chance to ask questions and present their concerns.





**OFFICIAL PHOTOGRAPH NO. 22**  
**U.S. ENVIRONMENTAL PROTECTION AGENCY**

**TDD Number:** TTEMI-05-001-0061

**Location:** Pooler Elementary Mercury Spill  
Pooler, Georgia

**Orientation:** East

**Date:** June 20, 2008

**Photographer:** Unknown

**Witness:** Unknown

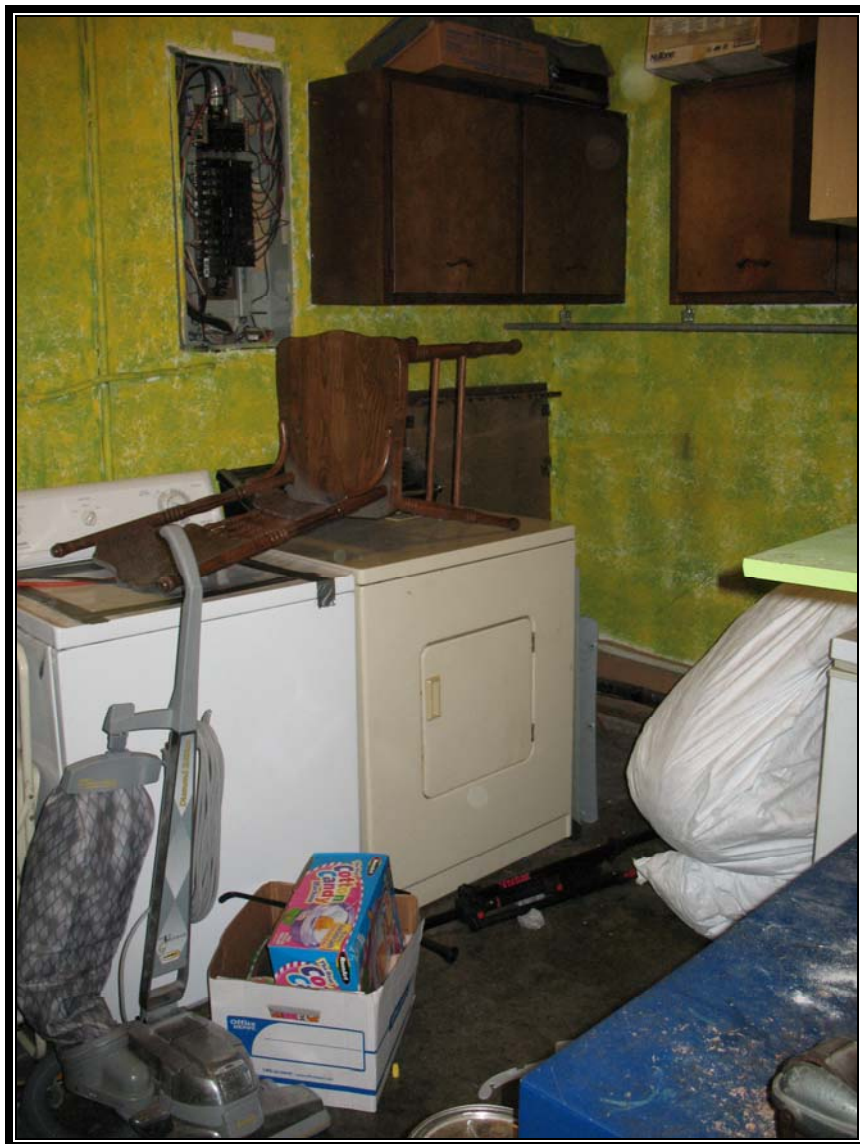
**Subject:** The front of the residence at 1206 Estates Way. This property was identified as the source house, and required extensive cleanup efforts, including the removal and replacement of the washing machine and dryer, sections of carpeting, and a portion of an interior wall.



**TETRA TECH**

B-22 TDD No. TTEMI-05-001-0061 (Pooler Elementary Mercury Spill)





**OFFICIAL PHOTOGRAPH NO. 23**  
**U.S. ENVIRONMENTAL PROTECTION AGENCY**

**TDD Number:** TTEMI-05-001-0061

**Location:** Pooler Elementary Mercury Spill  
Pooler, Georgia

**Orientation:** Southeast

**Date:** June 13, 2008

**Photographer:** Unknown

**Witness:** Unknown

**Subject:** Laundry room, where the mercury was stored, inside the residence at 1206 Estates Way, which was identified as the source house.



**TETRA TECH**

B-23 TDD No. TTEMI-05-001-0061 (Pooler Elementary Mercury Spill)



**OFFICIAL PHOTOGRAPH NO. 24**  
**U.S. ENVIRONMENTAL PROTECTION AGENCY**

**TDD Number:** TTEMI-05-001-0061

**Location:** Pooler Elementary Mercury Spill  
Pooler, Georgia

**Orientation:** Not applicable

**Date:** June 13, 2008

**Photographer:** Unknown

**Witness:** Unknown

**Subject:** Beads of mercury found on the floor of the laundry room inside the residence at 1206 Estates Way, which was identified as the source house.



**TETRA TECH**

B-24 TDD No. TTEMI-05-001-0061 (Pooler Elementary Mercury Spill)





**OFFICIAL PHOTOGRAPH NO. 25**  
**U.S. ENVIRONMENTAL PROTECTION AGENCY**

**TDD Number:** TTEMI-05-001-0061

**Location:** Pooler Elementary Mercury Spill  
Pooler, Georgia

**Orientation:** Northeast

**Date:** June 13, 2008

**Photographer:** Unknown

**Witness:** Unknown

**Subject:** Miscellaneous items removed from the residence at 1206 Estates Way, which was identified as the source house. Items were staged on plastic in the back yard to allow for heating and venting to occur.



**TETRA TECH**

B-25 TDD No. TTEMI-05-001-0061 (Pooler Elementary Mercury Spill)



**OFFICIAL PHOTOGRAPH NO. 26**  
**U.S. ENVIRONMENTAL PROTECTION AGENCY**

**TDD Number:** TTEMI-05-001-0061

**Location:** Pooler Elementary Mercury Spill  
Pooler, Georgia

**Orientation:** East

**Date:** June 17, 2008

**Photographer:** Unknown

**Witness:** Unknown

**Subject:** ERRS personnel using mercury-cleaning solution in the laundry room inside the residence at 1206 Estates Way, which was identified as the source house.



**TETRA TECH**

B-26 TDD No. TTEMI-05-001-0061 (Pooler Elementary Mercury Spill)





**OFFICIAL PHOTOGRAPH NO. 27**  
**U.S. ENVIRONMENTAL PROTECTION AGENCY**

**TDD Number:** TTEMI-05-001-0063

**Location:** Holly Street Mercury Spill  
Pooler, Georgia

**Orientation:** Northeast

**Date:** June 16, 2008

**Photographer:** Charles Berry, Tetra Tech

**Witness:** Courtney Roden, Tetra Tech

**Subject:** The front of the residence at 612 Holly Avenue, which required extensive cleanup efforts, including the removal and replacement of the washing machine, a section of carpeting, and a vacuum cleaner as well as miscellaneous personal items.



**TETRA TECH**

B-27 TDD No. TTEMI-05-001-0061 (Pooler Elementary Mercury Spill)



**OFFICIAL PHOTOGRAPH NO. 28**  
**U.S. ENVIRONMENTAL PROTECTION AGENCY**

**TDD Number:** TTEMI-05-001-0063

**Location:** Holly Street Mercury Spill  
Pooler, Georgia

**Orientation:** Northwest

**Date:** June 16, 2008

**Photographer:** Charles Berry, Tetra Tech

**Witness:** Courtney Roden, Tetra Tech

**Subject:** ERRS personnel removing carpet from the residence at 612 Holly Avenue.



**TETRA TECH**

B-28 TDD No. TTEMI-05-001-0061 (Pooler Elementary Mercury Spill)



**OFFICIAL PHOTOGRAPH NO. 29**  
**U.S. ENVIRONMENTAL PROTECTION AGENCY**

**TDD Number:** TTEMI-05-001-0063

**Location:** Holly Street Mercury Spill  
Pooler, Georgia

**Orientation:** Southeast

**Date:** June 16, 2008

**Photographer:** Charles Berry, Tetra Tech

**Witness:** Courtney Roden, Tetra Tech

**Subject:** ERRS personnel using mercury-cleaning solution to scrub the floors of the residence at 612 Holly Avenue.



**TETRA TECH**

B-29 TDD No. TTEMI-05-001-0061 (Pooler Elementary Mercury Spill)

## **APPENDIX D**

### **PUBLIC MEETING VIDEO (Electronic copy on DVD)**



**TETRA TECH**

TTEMI-05-001-0061 (Pooler Elementary Mercury Spill)  
TTEMI-05-001-0063 (Holly Street Mercury Spill)



## **APPENDIX E**

### **TABLE OF WITNESSES (2 Pages)**



**TABLE OF WITNESSES**  
**POOLER ELEMENTARY AND HOLLY STREET MERCURY SPILLS**  
**POOLER, CHATHAM COUNTY, GEORGIA**

Mr. James Webster  
On-Scene Coordinator  
U.S. Environmental Protection Agency  
61 Forsyth Street, 11<sup>th</sup> Floor  
Atlanta, GA 30303  
Telephone No.: (404) 562-8769

Mr. Jose Negron  
On-Scene Coordinator  
U.S. Environmental Protection Agency  
61 Forsyth Street, 11<sup>th</sup> Floor  
Atlanta, GA 30303  
Telephone No.: (404) 562-8754

Mr. Terrence Byrd  
On-Scene Coordinator  
U.S. Environmental Protection Agency  
61 Forsyth Street, 11<sup>th</sup> Floor  
Atlanta, GA 30303  
Telephone No.: (404) 562-8755

Ms. Leigh Lattimore  
On-Scene Coordinator  
U.S. Environmental Protection Agency  
61 Forsyth Street, 11<sup>th</sup> Floor  
Atlanta, GA 30303  
Telephone No.: (404) 562-8768

Mr. Jason Booth  
On-Scene Coordinator  
U.S. Environmental Protection Agency  
61 Forsyth Street, 11<sup>th</sup> Floor  
Atlanta, GA 30303  
Telephone No.: (404) 562-9126

Ms. Lynette Sholar  
On-Scene Coordinator  
U.S. Environmental Protection Agency  
61 Forsyth Street, 11<sup>th</sup> Floor  
Atlanta, GA 30303  
Telephone No.: (404) 562-9126

Mr. Subash Patel  
On-Scene Coordinator  
U.S. Environmental Protection Agency  
61 Forsyth Street, 11<sup>th</sup> Floor  
Atlanta, GA 30303  
Telephone No.: (404) 562-9217

Mr. Les Sims  
On-Scene Coordinator  
U.S. Environmental Protection Agency  
61 Forsyth Street, 11<sup>th</sup> Floor  
Atlanta, GA 30303  
Telephone No.: (404) 562-8892

Ms. Sherryl Carbonaro  
Community Involvement Coordinator  
U.S. Environmental Protection Agency  
61 Forsyth Street, 11<sup>th</sup> Floor  
Atlanta, GA 30303  
Telephone No.: (404) 562-8611

Ms. Michelle Cortes  
Environmental Emergency Specialist  
Georgia Environmental Protection Division  
6555 Abercorn Street, Suite 130  
Savannah, GA 31405  
Telephone No.: (912) 353-3225

Caroline Gordon-Jelks, Principal  
Jackie Haskew, Assistant Principal  
Pooler Elementary School  
308 Holly Street  
Pooler, GA 31322  
Telephone No.: (912) 748-3625

Mr. Charles (Chet) Grefski  
Logistics and Security Support  
Campus Police Department  
208 Bull Street, Room 120  
Savannah, GA 31401  
Telephone No.: (912) 201-5536

**TABLE OF WITNESSES**  
**POOLER ELEMENTARY AND HOLLY STREET MERCURY SPILLS**  
**POOLER, CHATHAM COUNTY, GEORGIA**

Mr. Robert Sims  
Response Manager  
Environmental Restoration LLC  
1666 Fabick Drive  
St. Louis, MO 63026  
Telephone No.: (636) 227-7477

Mr. Ron Lybarger  
Response Manager  
Environmental Restoration LLC  
1666 Fabick Drive  
St. Louis, MO 63026  
Telephone No.: (636) 227-7477

Mr. Didi Fung  
Project Manager  
Tetra Tech, Inc.  
1955 Evergreen Boulevard  
Duluth, GA 30096  
Telephone No.: (678) 775-3080



## **ATTACHMENT 1**

### **PROPERTY DATABASE (Electronic copy on CD)**



**TETRA TECH**

TTEMI-05-001-0061 (Pooler Elementary Mercury Spill)  
TTEMI-05-001-0063 (Holly Street Mercury Spill)

## **ATTACHMENT 2**

### **NEWSPAPER ARTICLES (18 Pages)**



**TETRA TECH**

TTEMI-05-001-0061 (Pooler Elementary Mercury Spill)  
TTEMI-05-001-0063 (Holly Street Mercury Spill)



## Child Brings Mercury to Schoolby Kelly Foster

Wednesday, June 11, 2008

A student brought a potentially dangerous material to his elementary school.

Fire crews and Hazmat were called to Pooler Elementary after a teacher found Mercury in a classroom.

A normal day at school turned into a potentially dangerous day.

A 5th grader brought Mercury from his home chemistry set into his classroom and the gym.

"The teacher noticed that they were kind of huddled around doing something, investigated what was going on and found out they were playing with Mercury at the time," said Chief Wade Simmons with Pooler Fire Department.

In all, 18 students and one teacher came in contact with it, causing Hazmat crews to isolate them and the areas exposed.

"He understood it was Mercury, but I don't think he understood it was a dangerous material he was using," said Chief Simmons.

Fire crews said the amount of Mercury the child brought to school was so small, in fact less than 4 milliliters. Still they said they didn't want to take any chances.

"The biggest thing with Mercury is to try and get it off your hands and away from your mouth, and the fact that they did that immediately reduced the risk of the children having any problems at all, tremendously," said Chief Simmons.

While Mercury is extremely dangerous if ingested, it would take a large amount of exposure to be a threat.

Firefighters monitored the students and teachers, and parents were sent a voice mail explaining the situation.

Even so, some worried about their children.

"They just gave it the all clear, they sent a message out on the phone, the firemen said it was all clear. I'm headed up here, I got to get them," said parent Melissa Lami.

The day ended with the disposal of the Mercury and a lesson in safety.

We found out the Environmental Protection Division is coming to see if there are any remaining traces of Mercury.

If that's the case, the school may be closed for the EPD inspection.

The Coastal Source will keep you updated on the details as they become available.

(Copyright 2008 WJCL 22/ABC, Fox28/WTGS, The Coastal Source)

---

**Find this article at:**

<http://www.thecoastalsource.com/news/local/19795224.html>

☐ Check the box to include the list of links referenced in the article.



## Environmental crews test air quality at Pooler Elementary School

Posted: June 12, 2008 05:37 PM EDT

Updated: June 16, 2008 11:14 AM EDT



By Brooke Kelley - [bio](#) | [email](#)

POOLER, GA (WTOC) - Students at Pooler Elementary will have another day off tomorrow as environmental crews test and cleanup.

This comes after a fifth grader brought between one to two teaspoons of mercury to school from his home. Even though no children were hurt, the school's principal says this couldn't have

come at a worse time.

On a normal school day, you would see buses parked outside and students inside at Pooler Elementary School. But today is far from normal.

Emergency hazmat teams, cleanup crews and officials like Dr. James Webster, are testing the air quality in all the classrooms for mercury.

"We have found that ambient conditions are elevated above cleanup action levels and based on that we think we have some mercury in two or three rooms - we need to locate it and clean it up," said Webster.

Because of that, there's no class tomorrow.

Tomorrow is the last day of school for students in Chatham County and the principal Caroline Gordon-Jelks says this isn't exactly how she wanted to end the school year and is working with district officials to have an end of the school year event.

"We are trying to find an alternate site that we can have our honors day programs and students and teachers can say their goodbyes, this is not how we want to end a great school year," said Jelks.

Gordon-Jelks says the last few days have been hectic dealing with this mercury issue, but she's pleased with how her staff handled it.

"We enacted our safety team immediately and we worked to put the procedures in place to allow our students to be safe," Gordon-Jelks said.

The tasks now are cleaning up and finding out why the boy brought mercury to the school in the first place.

"He is in fifth grade and inquisitive and sometimes good kids make some really bad decisions, and we have to teach consequences however we established there was no intent of malice," said Gordon-Jelks.

While environmental crews finish the job of testing and cleaning the school, Gordon-Jelks says her job is find some way to end the school year on a safe and positive note.

Even though environmentalists are saying it was a small amount of mercury, between one and two tea spoons, and causes no immediate health concern, students were still asked to bring the clothes they were wearing yesterday in for testing.





All content © Copyright 2000 - 2008 WorldNow and WTOC, a [Raycom Media](#) station. All Rights Reserved.  
For more information on this site, please read our [Privacy Policy](#) and [Terms of Service](#).

# Mercury scare closes Pooler school

BY ALDO NAHED

912-652-0448

aldo.nahed@savannahnow.com

The state Environmental Protection Division is investigating Pooler Elementary School after a group of fifth-graders was found playing with mercury Wednesday.

Classes are canceled for today while an air quality study is conducted at the school, said Savannah-Chatham school system spokesman Bucky Burnsed. School staff members were asked to report for work at Woodville-Tompkins Technical and Career Institute.

As a precautionary measure, EPD officials asked Pooler students to place their school uniforms and backpacks outside their homes Wednesday night in a bag to avoid any potential personal contamination. It was not clear what was to happen to the bagged items.

Officials did not yet know Wednesday if classes would resume Friday.

The incident unfolded about 12:21 p.m. Wednesday when the

SEE MERCURY, PAGE 6A

"There is nothing to be concerned about in the way of the hazardous material."

Savannah Fire Capt. Kevin Tomko

## Mercury

FROM PAGE 1A

Savannah Fire & Emergency Services hazardous materials team was dispatched to assist Pooler Fire Department crews already at the school.

One of the children was able to obtain some mercury, said Savannah Fire Capt. Kevin Tomko. The student took the mercury to school from his home and was showing it to the other students in his class, school officials said.

Their teacher notified authorities after seeing the students playing with the mercury.

It's unclear where the student got the mercury or what quantity of mercury was in the student's possession.

"We do know the parent involved, the mother of the child, was aware of the mercury," Burnsed said.

The school immediately notified parents and staff the problem was under control, Burnsed said. He said the contaminated areas were evacuated, and the children's hands were washed with soap and water.

All other students were held in their classrooms until officials determined there was no danger.

Crews completed their hazard clean-up at the school about 2:20 p.m., Tomko said.

The hazmat team contacted EPD officials, who advised the school staff that a state crew would arrive in Savannah on Wednesday night to give the school a closer look.

Mercury can evaporate into a toxic, odorless, colorless gas when exposed to air, according to an Environmental Protection Agency report.

The air quality study is being done as a precaution, said Courtney Cunningham, Chatham Emergency Management Agency specialist.

"Anytime you have any hazardous materials, you have to take extra precautions," Cunningham said. "You want all your bases covered and that all hazardous materials are cleaned up and contained."

Hazmat gave the mercury to a company that handles the element, fire officials said Wednesday afternoon.

"We assured the school board there is no lingering effect, and there is nothing to be concerned about in the way of the hazardous material," Tomko said.

Long-term exposure to mercury can cause visual impairments, memory loss, skin rashes and mood swings, according to the EPA.

### WHAT IS LIQUID MERCURY?

Pure mercury is a liquid metal, sometimes called quicksilver, used to make products such as thermometers, switches and some light bulbs.

Mercury affects a person's health if inhaled as a vapor and absorbed through the lungs.

Exposures can occur when mercury is spilled or products that contain elemental mercury break and expose mercury to the air, particularly in warm or poorly ventilated indoor spaces. People concerned about exposure to elemental mercury should consult a physician.

Source: www.epa.gov

# Mercury cleanup launched at school

Federal response team blankets Pooler Elementary; local medical expert says adverse reactions 'highly unlikely'

BY ALDO NAHED

912-652-0448 • aldo.nahed@savannahnow.com

Federal Environmental Protection Agency officials on Thursday worked to clean up mercury residue at Pooler Elementary School — a day after a student took some of the potentially dangerous substance to class.

A cleanup and an air quality study were ordered Wednesday after the fifth-grade boy showed up at school with a one-pound vial of mercury.

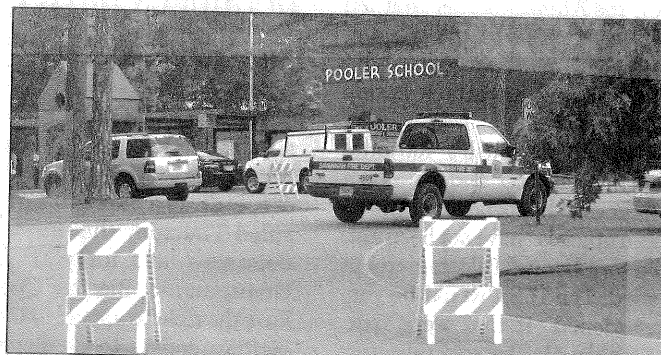
**ON PAGE 4A** A teacher saw several students playing with the mercury, confiscated it and called authorities.

The vial was half full — the equivalent of about two tablespoons — when a hazardous materials team got to it, said Dr. James Webster, the EPA's on-scene coordinator.

"General conditions are somewhat elevated," Webster said after scanning the school for the element. "Right now, we think it's isolated to a few locations."

Because of the school's air-conditioning system, high concentrations of mercury vapor were initially found throughout the building at 308 Holly Avenue. The presence of mercury was located in two classrooms, the

SEE MERCURY, PAGE 4A



Carl Elmore/Savannah Morning News

Pooler Elementary School remained closed Thursday morning as officials checked for mercury.

## Mercury

FROM PAGE 1A

main office, the cafeteria, the gymnasium and various janitorial closets, Webster said.

"We go to those areas (and) do a very detailed survey to try to find those little beads of mercury that are still laying around," he said.

One risk of mercury exposure is inhaling vapors from the slippery silver liquid, said Chatham County health officials.

"It's not what you expect in the handling of it," said Dr. Diane Weems, chief medical officer. "In handling it, you are potentially increasing the release into the air."

Wednesday's incident was a brief, short-term occurrence for a small number of children, she said.

"The likelihood of any adverse reactions is highly unlikely," Weems said.

Nonetheless, affected students are being monitored and their uniforms and shoes are being scanned for mercury.

There were 18 students in the classroom where the fifth-grader took the mercury. All were being tested and screened, said Pooler principal Caroline Gordon-Jelks.

"Sometimes good kids make bad decisions," she said. "There was no intent of malice."

Gordon-Jelks also said this was not the way the school staff

## SCHOOL'S OUT

Classes at Pooler Elementary School today — the last day of the school year — are canceled, school officials said. No makeup days will be required.

## LIQUID MERCURY

Pure mercury is a liquid metal, sometimes called quicksilver, used in consumer products such as thermometers, switches and some light bulbs. Exposure can occur when mercury is spilled or when products that contain it break and expose mercury to the air, particularly in warm or poorly ventilated spaces. Anyone concerned about exposure should consult a physician.

Source: www.epa.gov

and the students wanted to end the school year. She said an end-of-year event in the near future is being planned.

Officials are saying only that the mercury came from the boy's house. Cleanup crews also were dispatched there on Thursday.

"We are going to move from there and span out," Webster said.

Crews will clean, vent and monitor the school. They expect to wrap up their work sometime over the weekend.

Mercury cleanup is one of the most common types of cleanups for the EPA, Webster said. The agency responds to six to 10 cases a year.

"Unfortunately, people like to look at it, play with it and carry it around," he said.

# Clothes, homes get mercury tests

EPA still checking for contamination after Pooler Elementary School incident

BY BRIAN FRANCONI

912-652-0374

brian.franconi@savannahnow.com

Now in a fifth day of cleanup work at Pooler Elementary School, federal officials are asking anyone

who hasn't been checked for mercury exposure to do so.

"We are highly recommending students, parents and teachers who were at the school Wednesday, especially those that attended the dance, to have their clothing tested," Sherryl Carbonaro, a Environmental Protection Agency public affairs specialist, said Sunday.

"If they bring the bags to the school, we will test it for mercury."

Last week, parents were asked to bag their children's clothing after a fifth-grade student was found to have a one-pound vial of mercury in a classroom on Wednesday.

A teacher saw several students playing with the mercury, confiscated it and called authorities.

A Wednesday afternoon dance went on as planned, but classes at the school were canceled Thursday and Friday — the last two days of the aca-

demic year.

Individuals and families that have their clothing tested also are given the option of having their homes tested for mercury contamination, whether their clothing tests positive or not.

"We had a couple of homes we were concerned with, and we are working with those families to clear up those concerns," Carbonaro said.

SEE POOLER, BACK PAGE

## LIQUID MERCURY

Pure mercury is a liquid metal, sometimes called quicksilver, used in consumer products such as thermometers, switches and some light bulbs. Exposure can occur when mercury is spilled or when products that contain it break and expose mercury to the air, particularly in warm or poorly ventilated spaces. Anyone concerned about exposure should consult a physician.

Source: www.epa.gov

## Pooler

FROM PAGE 1C

Carbonaro did not say how many pieces of clothing or how many homes have been tested for mercury contamination.

The vial was half full — the equivalent of about two table-spoons — when a hazardous

materials team got to it, Dr. James Webster, the EPA's on-scene coordinator said last week as testing at the school got under way.

Because of the school's air-conditioning system, high concentrations of mercury vapor were initially found throughout the building at 308 Holly Ave. The presence of mercury was located in two

classrooms, the main office, the cafeteria, the gymnasium and various janitorial closets, Webster said.

Cleanup efforts were ongoing Sunday night. Carbonaro said the EPA will be at the school likely through Friday.

Carbonaro said the agency will have a public meeting this week, but a date has not been finalized.



---

## Pooler Elementary Mercury Scare by The Coastal Source

Monday, June 16, 2008

More fallout from the Mercury scare at Pooler Elementary last week.

Parents are still being asked to bring in the clothes, shoes, and backpacks worn by their children the day of the Mercury scare, including clothes worn that night to the dance.

The Environmental Protection Agency is also asking parents to bring in the vehicles used to drive their children home from school that day, to be scanned.

Students were exposed to Mercury after a 5th grader brought it to school from a home chemistry set.

[CLICK HERE](#) for the story and video

The EPA, health, and education leaders, are holding a meeting on Tuesday, June 17th at 7pm at West Chatham Middle School, 800 Pine Barren Road in Pooler, to answer parents concerns. (map below)

(Copyright 2008 WJCL 22/ABC, Fox28/WTGS, The Coastal Source)

---

### Find this article at:

<http://www.thecoastalsource.com/news/local/19985664.html>

☐

Check the box to include the list of links referenced in the article.



---

## Informing the Publicby Jason Davis

Wednesday, June 18, 2008

Dozens of concerned parents are wanting answers and school leaders are attempting to calm their fears about the mercury spill and cleanup at Pooler Elementary. No one is more upset than Kim Spencer whose son was diagnosed with mercury poisoning although he received through vaccines several years ago. "It's the most upsetting thing that's happened in our family lately. We spent thousands of dollars in the past five years to get it out of his system," said Spencer.

The EPA now says about half of the school is free of mercury vapor. "We have cleared one wing of the school. The media center and we're still working on other portions of the school," said James Webster, PhD from the Environmental Protection Agency. Meanwhile parents are still bringing in items to be scanned and wondering about the safety of their children.

"I want to know what the after affects are, what I should look for, what I should be worried about or not worried about. I'd like to leave here knowing everything is okay," said one parent when asked about the mercury spill. And others like Kim Spencer will still have her doubts even after sitting through this public meeting. "I have no idea about sending my son to summer school in two weeks just to have that much mercury in the facility where I'm going to send him to school, that is almost unfathomable."

For now, Spencer is awaiting the results of her son's blood test hoping for no traces of mercury while health experts continue cleanup the school- and assure the community. The EPA said they plan to keep on scanning for mercury until 5 pm Thursday and it can go even longer if the demand is there. They plan to have the cleanup process wrapped up by the end of the week.

(Copyright 2008 WJCL 22/ABC, Fox28/WTGS, The Coastal Source)

---

### Find this article at:

<http://www.thecoastalsource.com/news/local/20402669.html>

☐

Check the box to include the list of links referenced in the article.



---

## Mercury Spillsby The Coastal Source

Tuesday, June 17, 2008

A Mercury scare shut down a doctors office.

A blood pressure cuff broke last night spilling Mercury on the ground at the Kidney Associates of Savannah.

Following an EPA inspection, the staff was told to not go inside today.

So they canceled appointments, and aired out the building with fans.

Capt. Matt Stanley, of Savannah Fire, said, "Its not actually the handling of touching it is not so harmful, its breathing it. The problem is as you handle it, little bits you can't see will get on your hands, it will get on your clothes."

No word on whether the building can re-open tomorrow.

Here's what to do if you ever encounter a mercury spill:

- First don't use a broom or vacuum to remove the mercury.
- Turn off air conditioners and ventilate the area to the outside.
- Close off the area from the rest of the building.
- Call the fire department.

Meantime, officials continue to test cars and clothing after the Mercury spill at Pooler Elementary last week.

Parents are still encouraged to bring backpacks and have their vehicles tested for Mercury.

This spill happened after a fifth grader brought Mercury from his home chemistry set. The school was then shut down the last two days of the school year.

The EPA is still busy in Pooler The whole school has now been checked although its not completely cleared.

Plus, 143 homes have to be screened for Mercury. As of this morning, they have checked 45. They've

also checked 89 vehicles, two of them with elevated Mercury levels. They've checked more than 115 personal items, like backpacks.

[CLICK HERE](#) for a press release about Mercury Spills

[CLICK HERE](#) for video of the Doctor's Office Mercury Spill

[CLICK HERE](#) for video of the Pooler Elementary Mercury Scare

(Copyright 2008 WJCL 22/ABC, Fox28/WTGS, The Coastal Source)

---

**Find this article at:**

<http://www.thecoastalsource.com/news/local/20105054.html>

☐ Check the box to include the list of links referenced in the article.





## Are Mercury Spills Cause for Alarm?by Press Release

Tuesday, June 17, 2008

Two recent incidents in the Savannah area have created some concern about mercury exposure, safety, and clean-up. Savannah Fire and Emergency Services' Hazardous Materials Team responded to Pooler Elementary School last week after students were exposed to mercury. Another incident last night at Kidney Specialists of Savannah exposed one adult patient and the nursing staff to this same treacherous metal. The Hazardous Materials team mitigated the initial clean-up at both incidents.

Metallic mercury is a natural element with many applications. It is the only metal on earth that occurs in its liquid state at room temperature and in its pure form is often found in oral thermometers, barometers, sphygmomanometers (blood pressure testing devices), wall thermostats, some batteries, and even fluorescent light bulbs.

While this form of mercury is not easily absorbed through skin contact or digestion, its vapors can be harmful to your health. The liquid metal evaporates slowly at normal room temperatures and can cause nervous system disorders with prolonged exposure to the vapors. Young children are more sensitive to the effects of mercury because their central nervous system is still developing. Exposure to very high levels of Mercury vapor can cause brain, kidney, and lung damage. Vapor exposure can also harm developing a fetus.

Some common reversible effects of exposure range from sleep disturbances, tremors, and memory problems with lower level exposures, to nausea, vomiting, skin rashes and eye irritation with high concentration exposures. These effects are usually reversible once the exposure is terminated and the mercury has left your body.

Health risks are minimal at the time of the spill; it is the prolonged exposure caused by improper clean-up that creates the risk. If you have a mercury spill in your home or office, there are a number of steps you can take to reduce the risk of prolonged exposure.

- Remove as much of the liquid mercury as possible by:
  - o Rolling it into a dust pan
  - o Rolling it onto a sheet of paper
  - o Picking it up with an eye dropper
- ***Never use a broom or vacuum cleaner to remove the mercury.***
  - Move the collected material into a plastic bag or airtight container
    - o The paper, dust pan, or eye dropper should also be bagged for disposal
  - Turn off central air conditioning systems
  - Ventilate the area to the outside and close it off from the rest of the building
    - o Use fans to speed the ventilation
  - Contact your local health department and fire department.
  - Do not simply discard the product in the trash. Seek professional assistance.

These and other mercury safety tips can be found on our website at [www.savannahfire.org](http://www.savannahfire.org).

**Find this article at:**

<http://www.thecoastalsource.com/news/local/20026499.html>

☐ Check the box to include the list of links referenced in the article.

## Public meeting addresses mercury scare

Posted: June 17, 2008 11:09 PM EDT

Updated: June 23, 2008 10:07 AM EDT



By Christy Hutchings - [bio](#) | [email](#)

POOLER, GA (WTOC) - It's been almost a week since the mercury scare at Pooler Elementary School and parents are finally getting answers to the questions they've been asking.

Tuesday night officials from the Environmental Protection Agency (EPA), the health department, and schools held a public meeting at West Chatham Middle School to answer as many questions as they could about the mercury spilled in Pooler Elementary last Wednesday. See [Environmental crews test air quality at Pooler Elementary School](#).

Parents sat quietly through the EPA's presentation on the facts about mercury and exactly what was being done at Pooler Elementary school.

James Webster, Federal On-Scene Coordinator for EPA, estimates the school will be clear by the end of the week. Traces of mercury were still showing in some of the classrooms and the gymnasium.

During the past week the EPA also has asked that parents bring any items their child may have had on that day, book bags, any personal items and even their cars back to Pooler Elementary to be tested for Mercury. So far only two cars have tested for it, one of which belonged to the parent of the student that brought the mercury to school.

EPA is also checking student's homes. Two homes have tested positive for mercury and at least five washing machines had to be removed or decontaminated.

However, officials say even though there are traces of mercury on students clothes doesn't mean anyone is at great danger.

Dr. Diane Weems with the Coastal Health District said, "It's highly unlikely there would be a long term adverse consequences from this particular exposure." There just wasn't enough and everyone is airing on the side of caution.

Parents seemed to be at ease about their children's health, but still wanted to know why didn't the school administration evacuate students and send them home sooner? And why did they still host a dance in the building just hours after the mercury release?

Otis Brock with the school district says this is something they hadn't dealt with before and that Pooler Elementary followed all the current system guidelines.

As for the dance, Brock said hazmat cleared the building and said it was safe to re-enter. It wasn't until the Environmental Protection Agency experts got involved that they said everyone needed to be out.

Immediately students were sent home from the dance and the school was shut down again.

For the most part parents seemed to understand, everyone left knowing that this was a learning experience for those involved and now everyone knows how to handle a mercury spill.

"We used to not know how dangerous it was," said Althea Barre, whose daughter is in the 2<sup>nd</sup> grade at Pooler Elementary, "I think that they're trying to be precautionous to make sure the children are safe and make sure everybody is going to be ok. I believe they're following the right precautions."

If parents haven't brought their children's clothes in to be tested or had their vehicles tested they can do so Thursday at 5pm at Pooler Elementary School.

As for the parents that have already turned clothes, book bags or other items in. The EPA will contact you to let you know if you can have those items back or if they will have to be destroyed. Items destroyed will be replaced.



All content © Copyright 2000 - 2008 WorldNow and WTOG, a [Raycom Media](#) station. All Rights Reserved.  
For more information on this site, please read our [Privacy Policy](#) and [Terms of Service](#).

# Mercury concerns addressed

Parents meet with responders at Pooler school days after toxic incident involving student

BY MICHAEL ATKINS

912-652-0360

michael.atkins@savannahnow.com

Nearly 100 parents of Pooler Elementary School students got a lesson in the dangers of mercury spills Tuesday evening, less than a week after fifth-graders

were found in a classroom playing with the toxic liquid metal.

Many who attended a meeting with health and hazardous material handlers at West Chatham Middle School also voiced concerns — most notably regarding a dance that took place at Pooler Elementary only hours after the

midday mercury spill last Wednesday.

Federal Environmental Protection Agency responders discovered the next day that the airborne mercury concentration of vapors in some areas of the gymnasium measured 100,000 parts per trillion.

The agency's "action level" — although conservative — is 1,000 parts per trillion.

"I would never have let him go to the dance party if we had been notified properly," Young Kim said after the

meeting.

His son, a kindergartner, was wearing clothes that later tested positive for the presence of mercury.

"We are very careful about this — we only eat certain types of fish because mercury is dangerous," he added.

Otis Brock, operations chief for Savannah-Chatham public schools, said the afternoon dance had been given the go-ahead by the Savannah Fire &

SEE MERCURY, PAGE 5A

# Mercury

FROM PAGE 1A

Emergency Services hazardous materials team.

Once the Chatham Emergency Management Agency contacted the EPA, and the EPA said a full-scale investigation was necessary, the dance was called off, Brock said.

"Certainly if we could go back in time and do it all over again, we wouldn't have had the dance," he said. "But once we had the all-clear, it was back to business as usual. Our hazmat team did everything they're supposed to do — mercury is just something new to our emergency response community."

EPA incident commander James Webster agreed.

"It sounds to me like the procedures were followed exactly how they should have been," he said.

The concessions and assurances did little to placate parents like Christina Moore.

"I can't believe that dance did not get canceled," said Moore, whose first-grade son did not attend the social gathering. "I understand they have proce-

## ON THE WEB

Read tips to safeguard yourself after a mercury spill. Go to [savannahnow.com/news](http://savannahnow.com/news) and click on this story.



dures in place, but they aren't enough."

Dr. Diane Weems, chief medical officer with the Chatham County Health Department, said the longer someone is exposed to mercury vapors, the greater chance of experiencing symptoms such as nausea, vomiting, diarrhea and irritation of the skin or eyes.

"Given the levels that were measured and the brevity of exposure from this particular event, it's highly unlikely it would cause adverse reactions," Weems said.

Meanwhile, about 30 contractors and technicians — most of them from Atlanta and Jacksonville, Fla. — are still at Pooler Elementary, engaged in exhaustive rounds of testing mercury levels, hunting down every tiny bead of the spillage, and airing out the complex.

Crews also have screened 89 vehicles (two tested above the action level), 55 homes (two were found to contain elevated

levels), and clothing from 155 families.

It's a slow and deliberate process, but Webster expects it to be over by the end of the week.

Latest readings show elevated mercury concentrations in three areas — including the classroom where the student spilled the one-pound vile of mercury.

"We'll take a whole day to do the clearance," he said. "The rooms will be sealed up overnight, and we'll go in every room and take a reading every hour over an eight-hour period. If there's a rebound, we'll see it."

During the last half of Tuesday evening's meeting, parents passed forward slips of paper with questions.

One asked whether the student who brought the mercury would be punished. Brock said meetings with the student's parents had taken place, but any disciplinary action would not be made public.

Another said a child had experienced tingling skin. Weems said a physician should be consulted.

Finally, a parent questioned how urgently Webster responded the day of the spill.

His response: "I drove 85 miles an hour."



# Savannah Morning News.

SUNDAY, JUNE 22, 2008

SAVANNAHNOW.COM



LIGHT OF THE COASTAL EMPIRE

## Mercury: Treat it like lead paint

BY MICHAEL ATKINS

912-652-0360

michael.atkins@savannahnow.com

It wasn't all that long ago that mercury was commonly found in household thermostats, wristwatch batteries and the chemistry sets children tinkered with.

But two recent mercury spills — one inside an elementary school and another at a midtown Savannah doctor's office — have sparked a federal response and have alerted local officials to the dangers posed by the liquid metal.

Dr. Diane Weems likened mercury to the lead paint once used without hesitation on homes and even baby cribs.

"The silver lining to come out of this is the opportunity to educate

SEE MERCURY, PAGE 8A

## Mercury

FROM PAGE 1A

your children about the dangers of mercury," said Weems, chief medical officer with the Chatham County Health Department. "And it's a chance to look around your own house to make sure there aren't any old stores of it around.

"We have an obligation to educate children that mercury is dangerous."

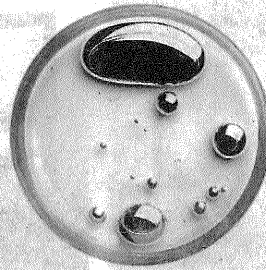
On June 11, a group of fifth-graders was found playing with the contents of a one-pound vial of mercury in a classroom at Pooler Elementary School. Hazardous-material crews cleaned up the spillage, but not before vapors had spread to other rooms through the building's ventilation system.

Five days later, a patient at Kidney Specialists of Savannah apparently knocked over a mounted blood-pressure cuff, spilling roughly a pound of mercury.

Both instances left many scratching their heads with questions.

Here are a few answers:

**Who is at risk, and what are the effects?**



James Webster, of the federal Environmental Protection Agency, said that when his teams respond to mercury concentration after a spill, the "action level" is lower in schools, for instance, than in industrial settings.

"We have different standards for different categories of people," said Webster, the EPA's on-site coordinator at Pooler Elementary. "We consider children a high-risk category."

Those with pre-existing medical conditions are likewise vulnerable.

Long-term exposure to mercury can cause visual impairments, memory loss, skin rashes and mood swings, according to the EPA. The reproductive and nervous systems also can be affected.

Short-term exposure is not considered highly dangerous, Weems said.

### Liquid mercury

Pure mercury is a liquid metal, sometimes called quicksilver, used in consumer products such as thermometers, switches and some light bulbs. Exposure can occur when mercury is spilled or when products that contain it break and expose mercury to the air, particularly in warm or poorly ventilated spaces. Anyone concerned about exposure should consult a physician.

Source: [www.epa.gov](http://www.epa.gov)

### How did the spill occur at the doctor's office, and was the patient endangered?

Capt. Matt Stanley, spokesman for Savannah Fire & Emergency Services, characterized the patient's exposure to the substance as "short-term" and said his clothes have since been collected and examined by environmental crews.

As for how the device broke, "we don't know specifically, but the patient may have been examining the equipment, as we're all prone to do when we sit in the doctor's office," Stanley said. "We don't believe there was any intent, but we're going to talk to him and find out exactly what happened."

### Were the school buses at Pooler Elementary scanned for mercury presence?

Webster said all buses were inspected Thursday, before

they were used to transport students.

### Why did local procedures — which resulted in an all-clear in Pooler, before EPA responded — fail to identify the threat that invisible vapors posed?

Webster said the steps school officials took were appropriate — such as alerting local hazmat crews and then contacting state and federal agencies — in the immediate aftermath of the on-campus incident.

"They isolated the children, seized the source, and they notified hazmat — that's the procedure followed in most areas," he said. "The monitors we use are specialized. Not all hazmat squads have them, and that's unfortunate."

On Friday, Stanley announced that the department has plans to purchase a

\$40,000 mercury analyzer.

### Did the school punish the student responsible for the Pooler spill?

Otis Brock, operations chief for Savannah-Chatham public schools, said any disciplinary action would not be made public, but he indicated there would be none.

"The young person who brought this did it with no ill intent," Brock said. "It's an unfortunate mistake, and we'll work with him and his family so they understand the importance and unfortunate result of what that person did."

### Will the EPA return to Pooler Elementary before classes resume in the fall?

"Once we clear a school," Webster said, "we generally do not come back unless they have a reason to believe levels have rebounded."

A rebound, however, would not be easy to detect, because mercury vapors are odorless and colorless.

"You can't see them, and you can't smell them," Webster said, adding that before crews pack up and leave Pooler, they'll do a room-by-room scan to make sure that any threat has been remediated.

### **ATTACHMENT 3**

NATIONAL RESPONSE CENTER INCIDENT REPORT NO. 873821  
(Three Pages)



**TETRA TECH**

TTEMI-05-001-0061 (Pooler Elementary Mercury Spill)  
TTEMI-05-001-0063 (Holly Street Mercury Spill)

NATIONAL RESPONSE CENTER 1-800-424-8802

\*\*\* For Public Use \*\*\*

Information released to a third party shall comply with any applicable federal and/or state Freedom of Information and Privacy Laws

Incident Report # 873821

INCIDENT DESCRIPTION

\*Report taken at 15:47 on 11-JUN-08

Incident Type: FIXED

Incident Cause: OPERATOR ERROR

Affected Area:

The incident occurred on 11-JUN-08 at 12:00 local time.

Affected Medium: OTHER SCHOOL

---

SUSPECTED RESPONSIBLE PARTY

Organization: POOLER ELEMENTARY  
POOLER, GA

Type of Organization: LOCAL GOVERNMENT

---

INCIDENT LOCATION

County: CHATHAM

City: POOLER State: GA

POOLER ELEMENTARY

---

RELEASED MATERIAL(S)

CHRIS Code: MCR Official Material Name: MERCURY

Also Known As:

Qty Released: 3 OUNCE(S)

---

DESCRIPTION OF INCIDENT

CALLER IS REPORTING A RELEASE OF MERCURY AT POOLER ELEMENTARY SCHOOL DUE TO A STUDENT BRINGING IN A JAR CONTAINING 2 TO 3 OUNCES, APPROXIMATELY .5 OUNCES WERE RELEASED ONTO THE FLOOR.

---

INCIDENT DETAILS

Package: N/A

Building ID:

Type of Fixed Object: SCHOOL

Power Generating Facility: NO

Generating Capacity:

Type of Fuel:

NPDES:

NPDES Compliance: UNKNOWN

---

DAMAGES

Fire Involved: NO Fire Extinguished: UNKNOWN

INJURIES: NO Hospitalized: Empl/Crew: Passenger:

FATALITIES: NO      Empl/Crew:      Passenger:      Occupant:  
 EVACUATIONS: NO      Who Evacuated:      Radius/Area:  
 Damages: NO

<u>Closure Type</u>	<u>Description of Closure</u>	<u>Length of Closure</u>	<u>Direction of Closure</u>
Air:	N		
Road:	N		M Ar
Waterway:	N		
Track:	N		

Passengers Transferred: NO  
 Environmental Impact: NO

Media Interest: LOW    Community Impact due to Material:

---

REMEDIAL ACTIONS

CONTAMINATED AREA AND PEOPLE (TWO CLASSROOMS) WERE CLEANED BUT NOT IN ACCORDANCE WITH EPA PROTOCOL.

Release Secured: YES

Release Rate:

Estimated Release Duration:

---

WEATHER

Weather: UNKNOWN, °F

---

ADDITIONAL AGENCIES NOTIFIED

Federal: NONE  
 State/Local: CHATCHAM EM, SAVANNAH FD/HAZMAT  
 State/Local On Scene: CHATCHAM EM, SAVANNAH FD/HAZMAT  
 State Agency Number: 52723

---

NOTIFICATIONS BY NRC

USCG ICC (ICC ONI)  
 11-JUN-08 15:58  
 CHEM SAFETY AND HAZARD INVEST BOARD (MAIN OFFICE)  
 11-JUN-08 15:58  
 DOT CRISIS MANAGEMENT CENTER (MAIN OFFICE)  
 11-JUN-08 15:58  
 EPA OEM (MAIN OFFICE)  
 11-JUN-08 16:03  
 U.S. EPA IV (MAIN OFFICE)  
 11-JUN-08 16:01  
 NATIONAL INFRASTRUCTURE COORD CTR (MAIN OFFICE)  
 11-JUN-08 15:58  
 NOAA RPTS FOR GA (MAIN OFFICE)  
 11-JUN-08 15:58  
 SC EMERGENCY PREPAREDNESS DIVISION (MAIN OFFICE)  
 11-JUN-08 15:58

SECTOR CHARLESTON (COMMAND CENTER)

11-JUN-08 15:58

SECTOR CHARLESTON (MSU SAVANNAH)

11-JUN-08 16:00

GEORGIA EMERGENCY MNGMT AGENCY (MAIN OFFICE)

11-JUN-08 15:58

SC DEPT OF ENV CNTL ATTN: ERS (MAIN OFFICE)

11-JUN-08 15:58

---

ADDITIONAL INFORMATION

PLEASE CONTACT REPORTING PARTY AS SOON AS POSSIBLE.

---

\*\*\* END INCIDENT REPORT # 873821 \*\*\*