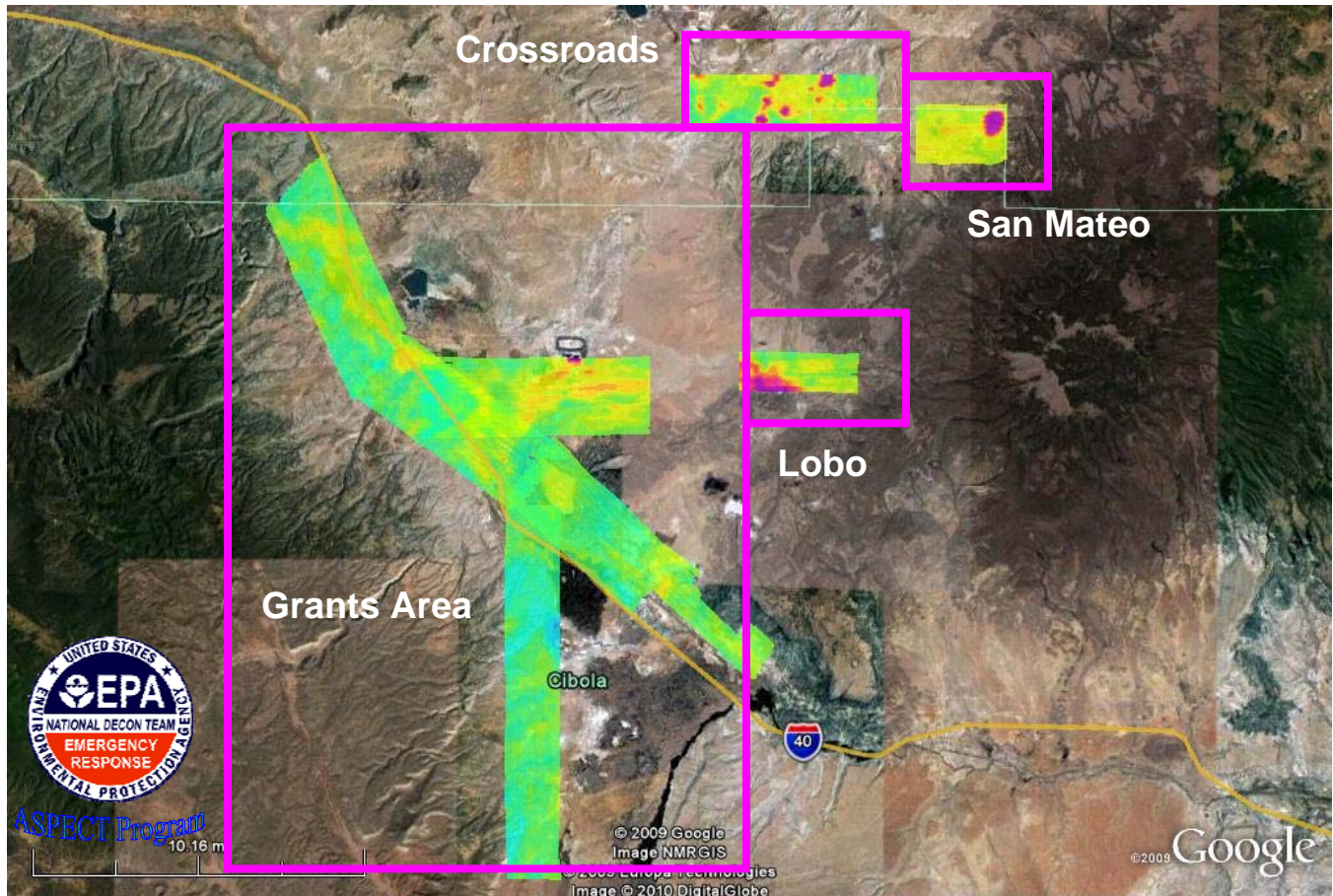


Image 7

**Grants Area Survey
Gamma Count Rate Contour Map
October 7- 12, 2009**



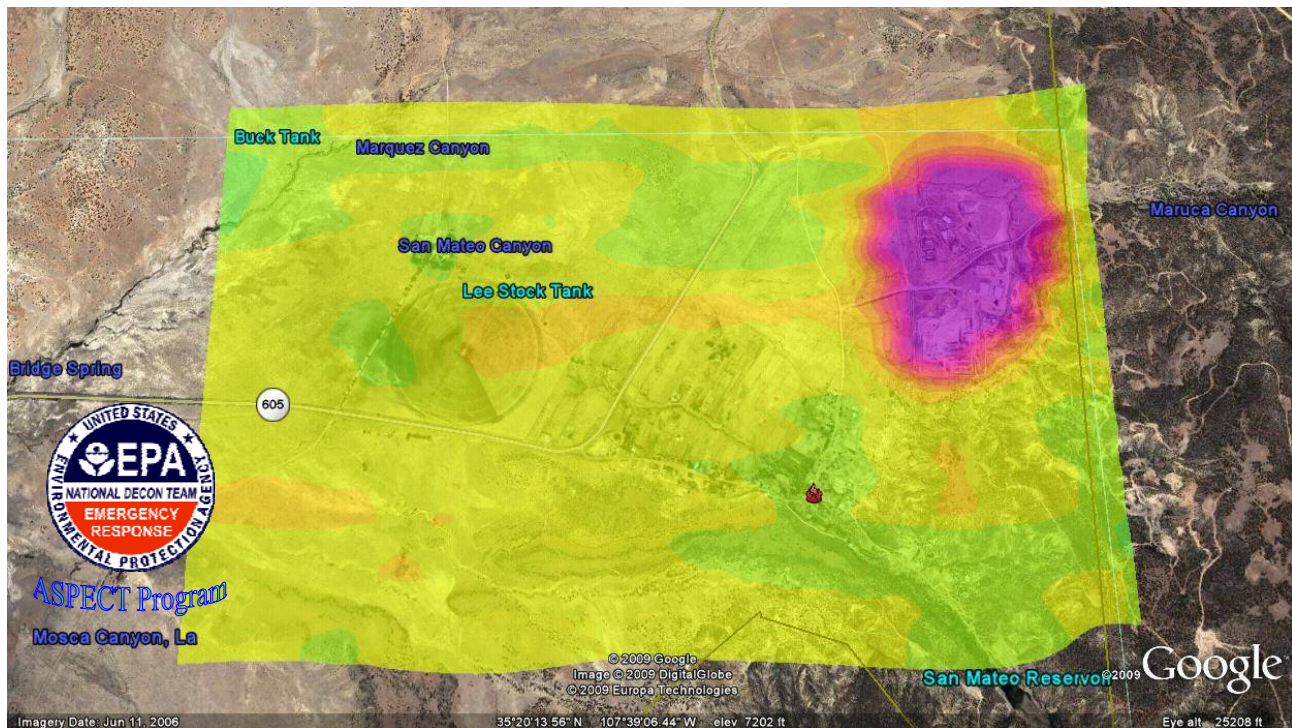
Parameter		Gmm Tot	
	< 1500.0		7500.0 : 9000.0
	1500.0 : 3000.0		9000.0 : 10500.
	3000.0 : 4500.0		10500. : 12000.
	4500.0 : 6000.0		12000. : 13500.
	6000.0 : 7500.0		> 13500.

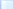










The colors were selected to maximize the variation within the data for illustration purposes only.

**This image should not be used independently to assess potential health risks.
Additional information is necessary to make appropriate health-related decisions.**

Image 8

**Grants Area
San Mateo Survey
Gamma Count Rate Contour Map
October 7, 2009**



Parameter	Gmm Tot		
	< 1500.0		7500.0 : 9000.0
	1500.0 : 3000.0		9000.0 : 10500.
	3000.0 : 4500.0		10500. : 12000.
	4500.0 : 6000.0		12000. : 13500.
	6000.0 : 7500.0		> 13500.

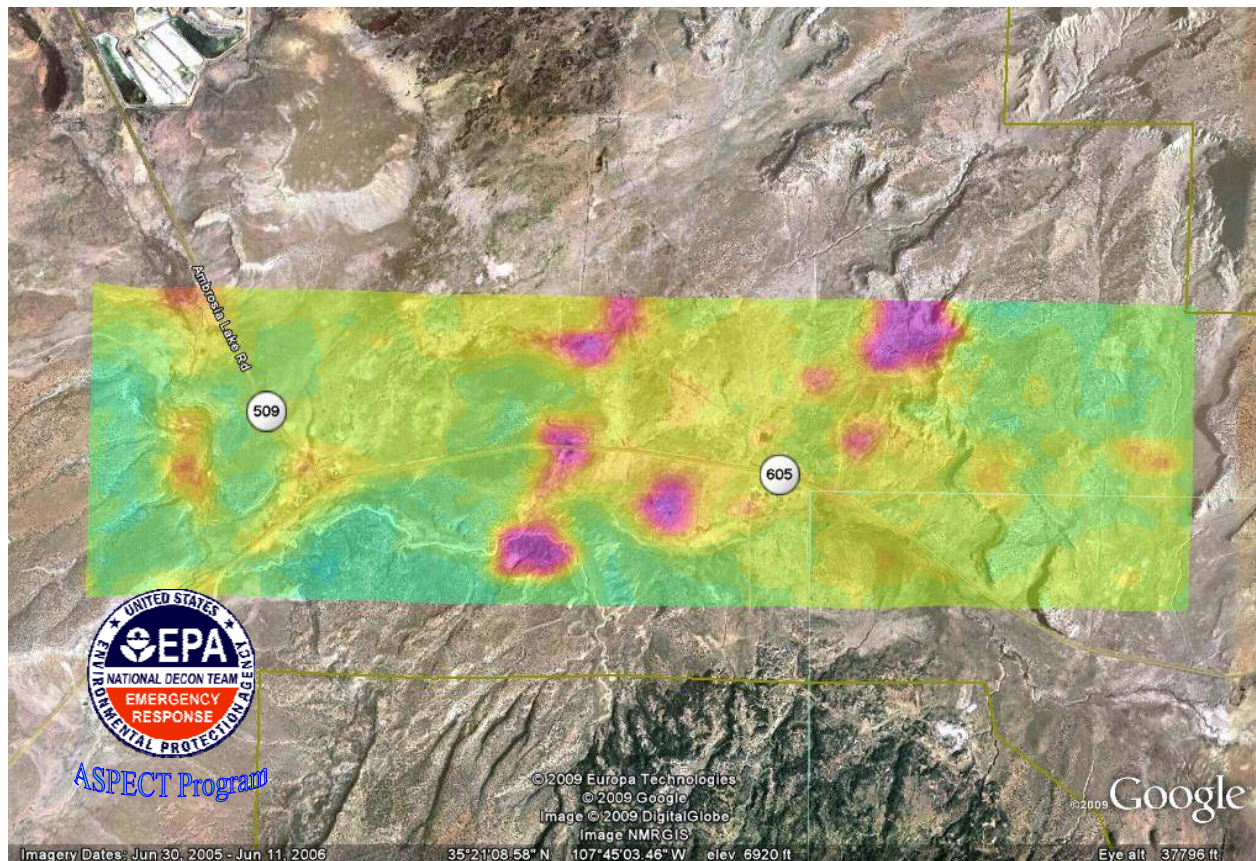
Counts per Second (cps)

The colors were selected to maximize the variation within the data for illustration purposes only.

**This image should not be used independently to assess potential health risks.
Additional information is necessary to make appropriate health-related decisions.**

Image 9

**Grants Area
Crossroads Survey
Gamma Count Rate Contour Map
October 8, 2009**



Parameter		Gmm Tot	
	< 1500.0		7500.0 : 9000.0
	1500.0 : 3000.0		9000.0 : 10500.
	3000.0 : 4500.0		10500. : 12000.
	4500.0 : 6000.0		12000. : 13500.
	6000.0 : 7500.0		> 13500.

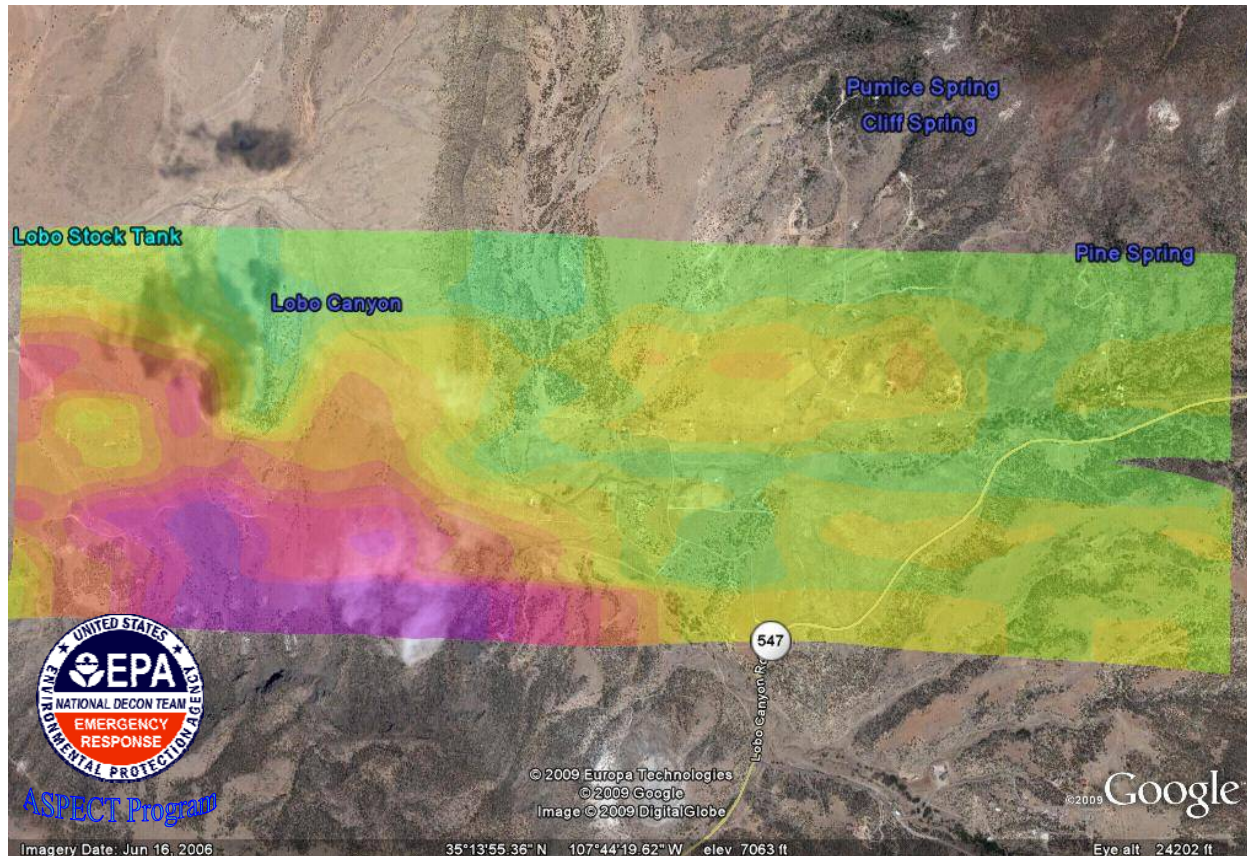
Counts per Second (cps)












The colors were selected to maximize the variation within the data for illustration purposes only.

This image should not be used independently to assess potential health risks.
Additional information is necessary to make appropriate health-related decisions.

Image 10

**Grants Area
Lobo Survey
Gamma Count Rate Contour Map
October 8, 2009**



Parameter	Gmm Tot		
	< 1500.0		7500.0 : 9000.0
	1500.0 : 3000.0		9000.0 : 10500.
	3000.0 : 4500.0		10500. : 12000.
	4500.0 : 6000.0		12000. : 13500.
	6000.0 : 7500.0		> 13500.

Counts per second (cps)

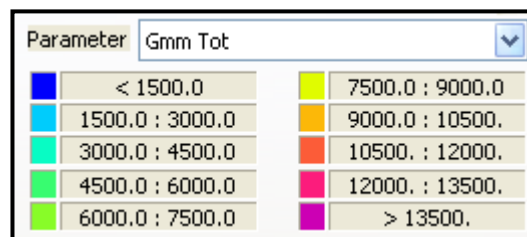
The colors were selected to maximize the variation within the data for illustration purposes only.

The increased count rate activity in the lower left-hand corner is an artifact produced by a "topography effect" where additional counts are detected as a result of large changes in the surface elevation and terrain.

**This image should not be used independently to assess potential health risks.
Additional information is necessary to make appropriate health-related decisions.**

Image 11

**Grants Area
Grants North Area Survey
Gamma Count Rate Contour Map
October 10, 2009**



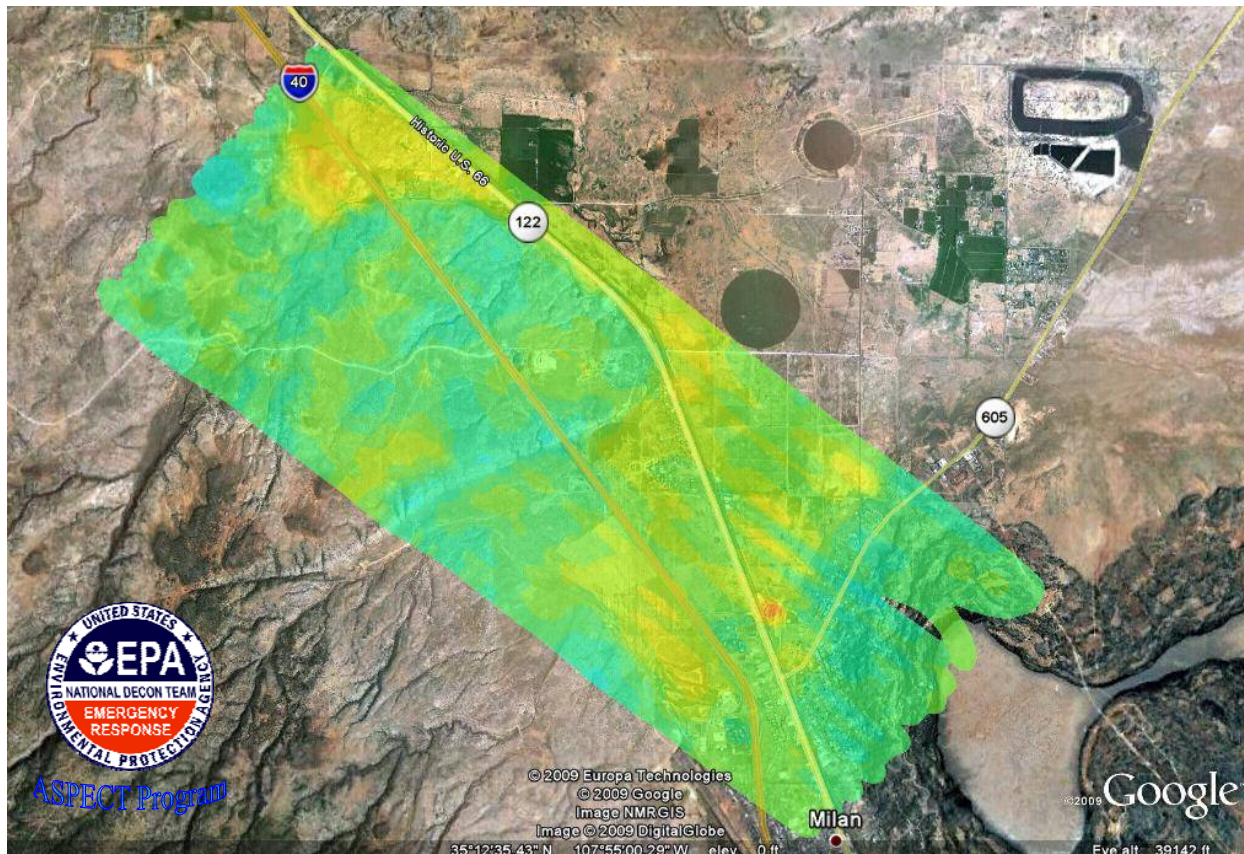
Counts per second (cps)

he colors were selected to maximize the variation within the data for illustration purposes only.

This image should not be used independently to assess potential health risks.
Additional information is necessary to make appropriate health-related decisions.

Image 12

**Grants Area
Grants Central Area Survey
Gamma Count Rate Contour Map
October 10, 2009**



Parameter		Gmm Tot	
	< 1500.0	7500.0 : 9000.0	
	1500.0 : 3000.0	9000.0 : 10500.	
	3000.0 : 4500.0	10500. : 12000.	
	4500.0 : 6000.0	12000. : 13500.	
	6000.0 : 7500.0	> 13500.	

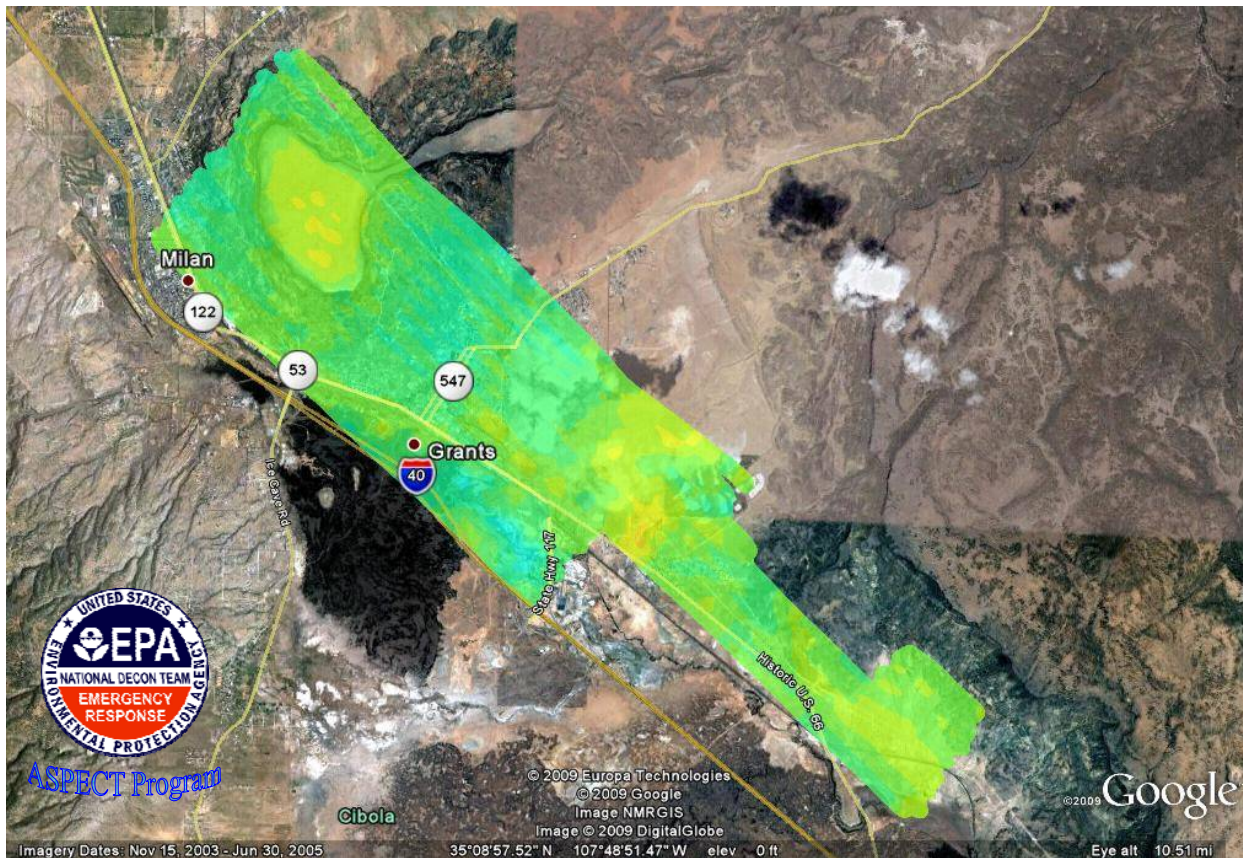
Counts per second (cps)











The colors were selected to maximize the variation within the data for illustration purposes only.

This image should not be used independently to assess potential health risks.
Additional information is necessary to make appropriate health-related decisions.

Image 13

**Grants Area
Grants South Area Survey
Gamma Count Rate Contour Map
October 9, 2009**



Parameter		Gmm Tot	
	< 1500.0		7500.0 : 9000.0
	1500.0 : 3000.0		9000.0 : 10500.
	3000.0 : 4500.0		10500. : 12000.
	4500.0 : 6000.0		12000. : 13500.
	6000.0 : 7500.0		> 13500.

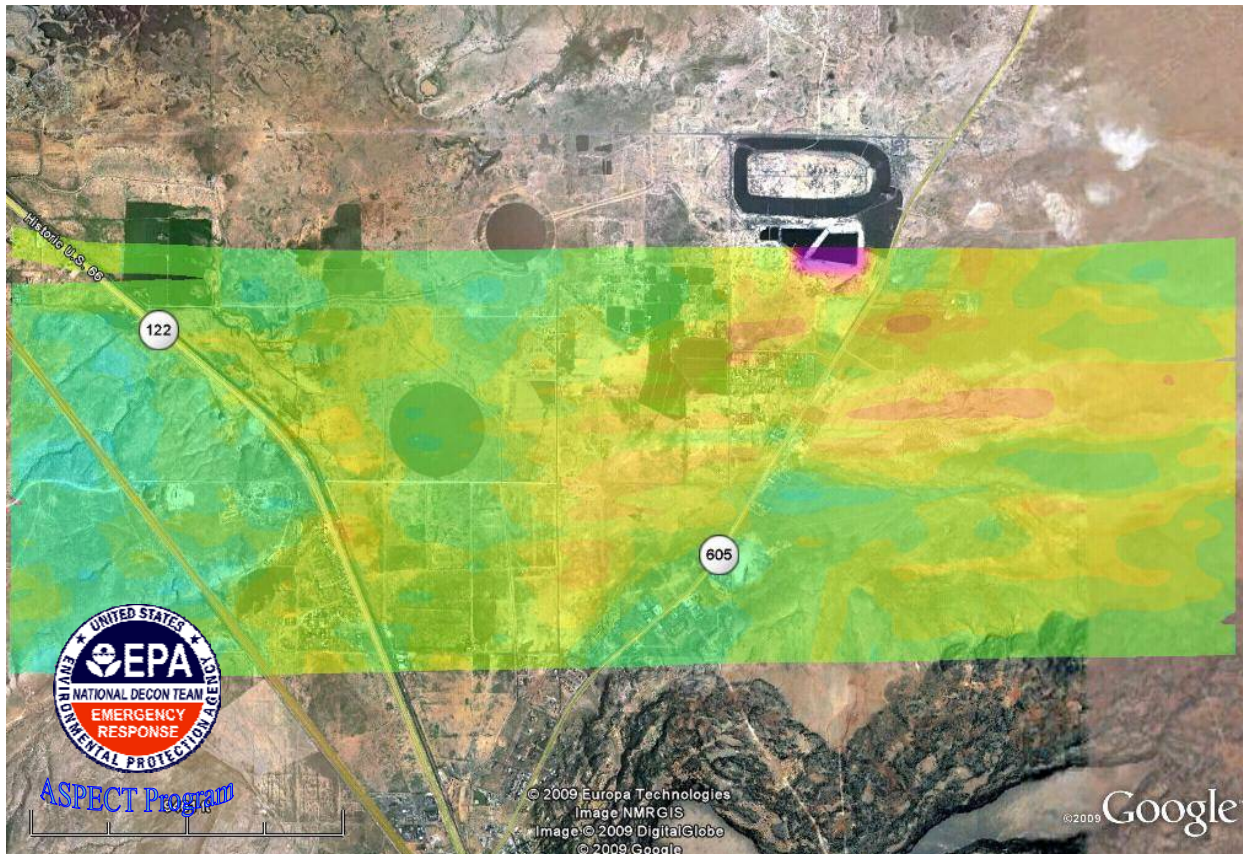
Counts per second (cps)

The increased count rate activity in the northwest 'lava lake' is an **artifact** produced by a "**topography effect**" where additional counts are detected as a result of large changes in the surface elevation and terrain.

This image should not be used independently to assess potential health risks. Additional information is necessary to make appropriate health-related decisions.

Image 14

**Grants Area
Grants East Area Survey
Gamma Count Rate Contour Map
October 12, 2009**



Parameter	Gmm Tot	
	< 1500.0	7500.0 : 9000.0
	1500.0 : 3000.0	9000.0 : 10500.
	3000.0 : 4500.0	10500. : 12000.
	4500.0 : 6000.0	12000. : 13500.
	6000.0 : 7500.0	> 13500.

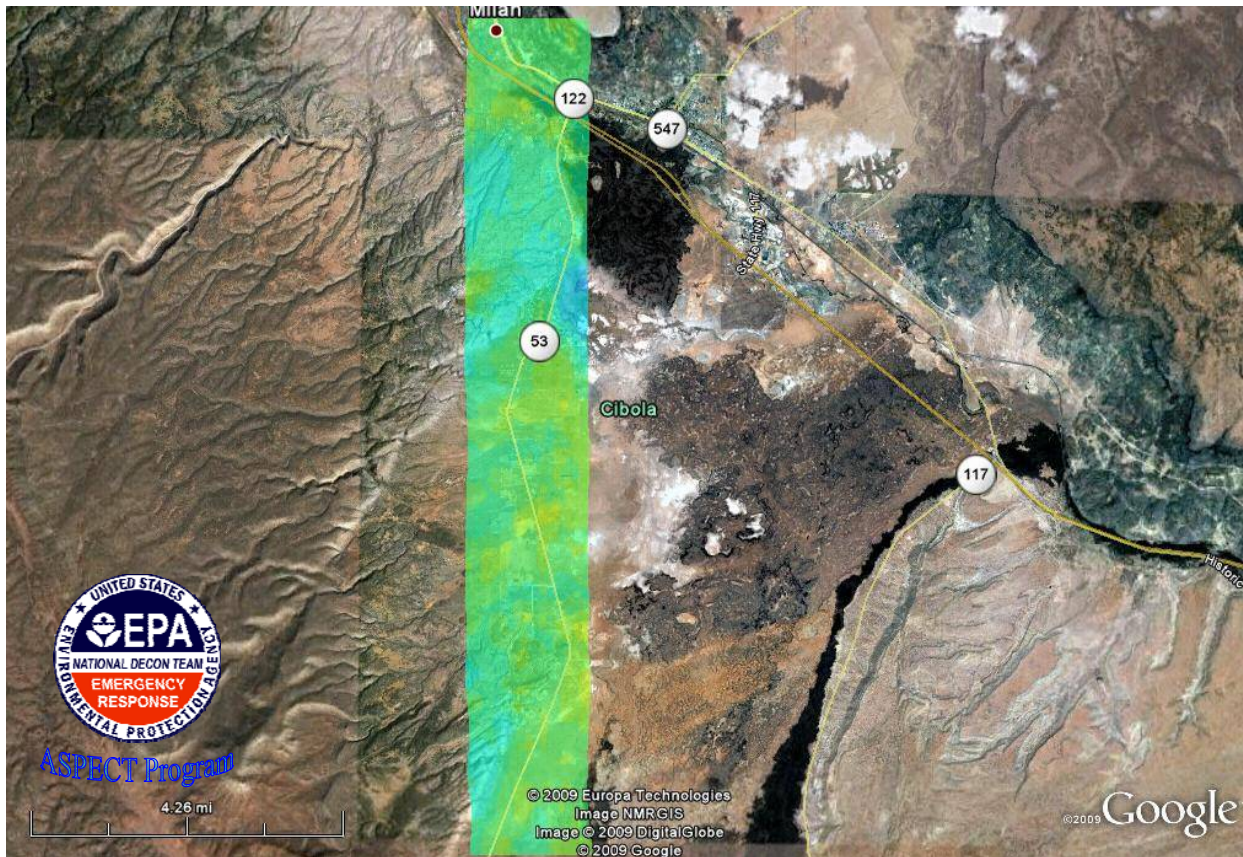
Counts per second (cps)












The colors were selected to maximize the variation within the data for illustration purposes only.

**This image should not be used independently to assess potential health risks.
Additional information is necessary to make appropriate health-related decisions.**

Image 15

**Grants Area
Grants Southernmost Area Survey
Gamma Count Rate Contour Map
October 12, 2009**

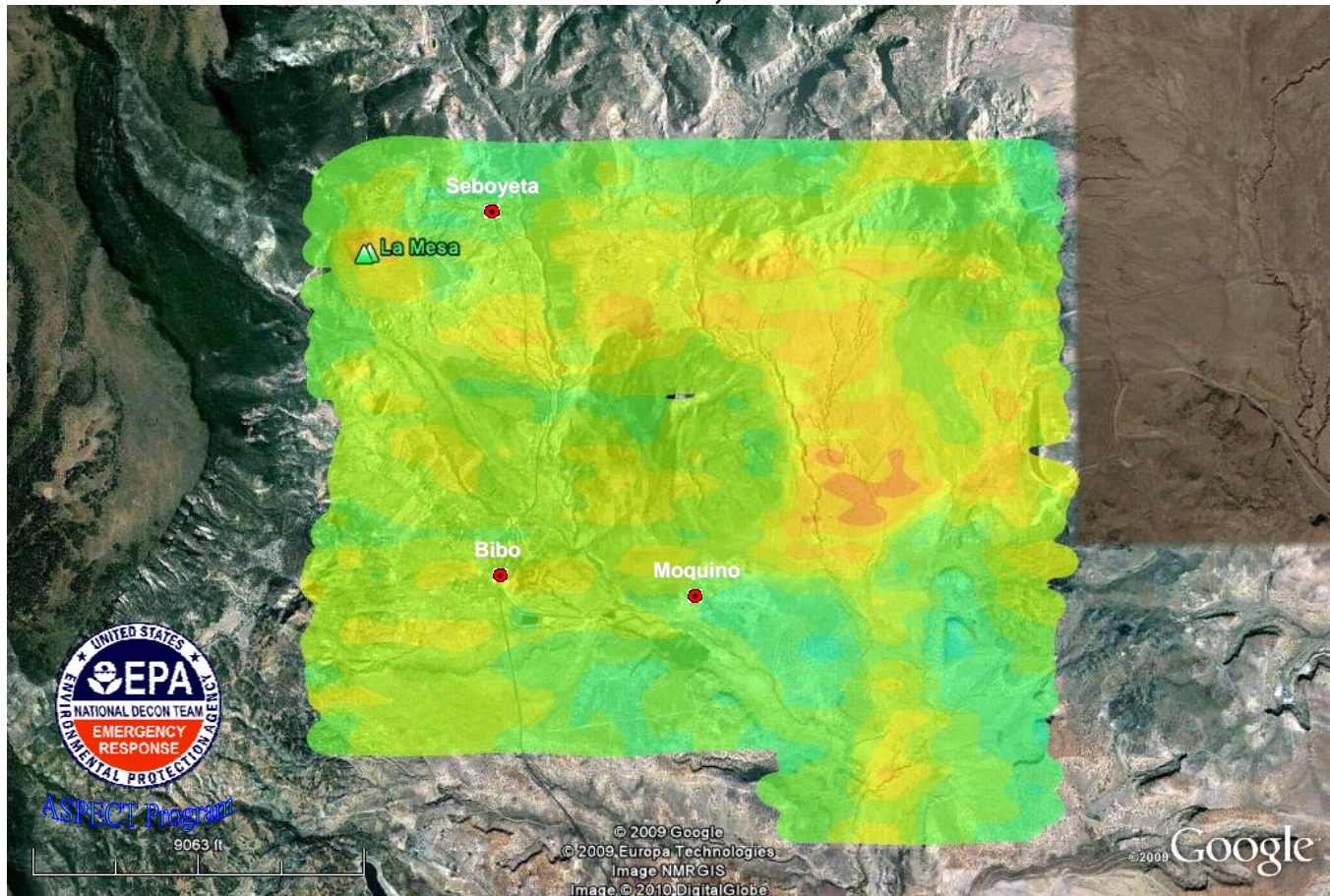


Parameter	Gmm Tot		
	< 1500.0		7500.0 : 9000.0
	1500.0 : 3000.0		9000.0 : 10500.
	3000.0 : 4500.0		10500. : 12000.
	4500.0 : 6000.0		12000. : 13500.
	6000.0 : 7500.0		> 13500.

Counts per second (cps)

The colors were selected to maximize the variation within the data for illustration purposes only.

**This image should not be used independently to assess potential health risks.
Additional information is necessary to make appropriate health-related decisions.**

*Image 19***Cebolleta Land Grant Area Survey
Gamma Count Rate Contour Map
October 15, 2009**

Parameter	Gmm Tot	
	< 1500.0	7500.0 : 9000.0
	1500.0 : 3000.0	9000.0 : 10500.
	3000.0 : 4500.0	10500. : 12000.
	4500.0 : 6000.0	12000. : 13500.
	6000.0 : 7500.0	> 13500.

Counts per second (cps)

The colors were selected to maximize the variation within the data for illustration purposes only.

**This image should not be used independently to assess potential health risks.
Additional information is necessary to make appropriate health-related decisions.**

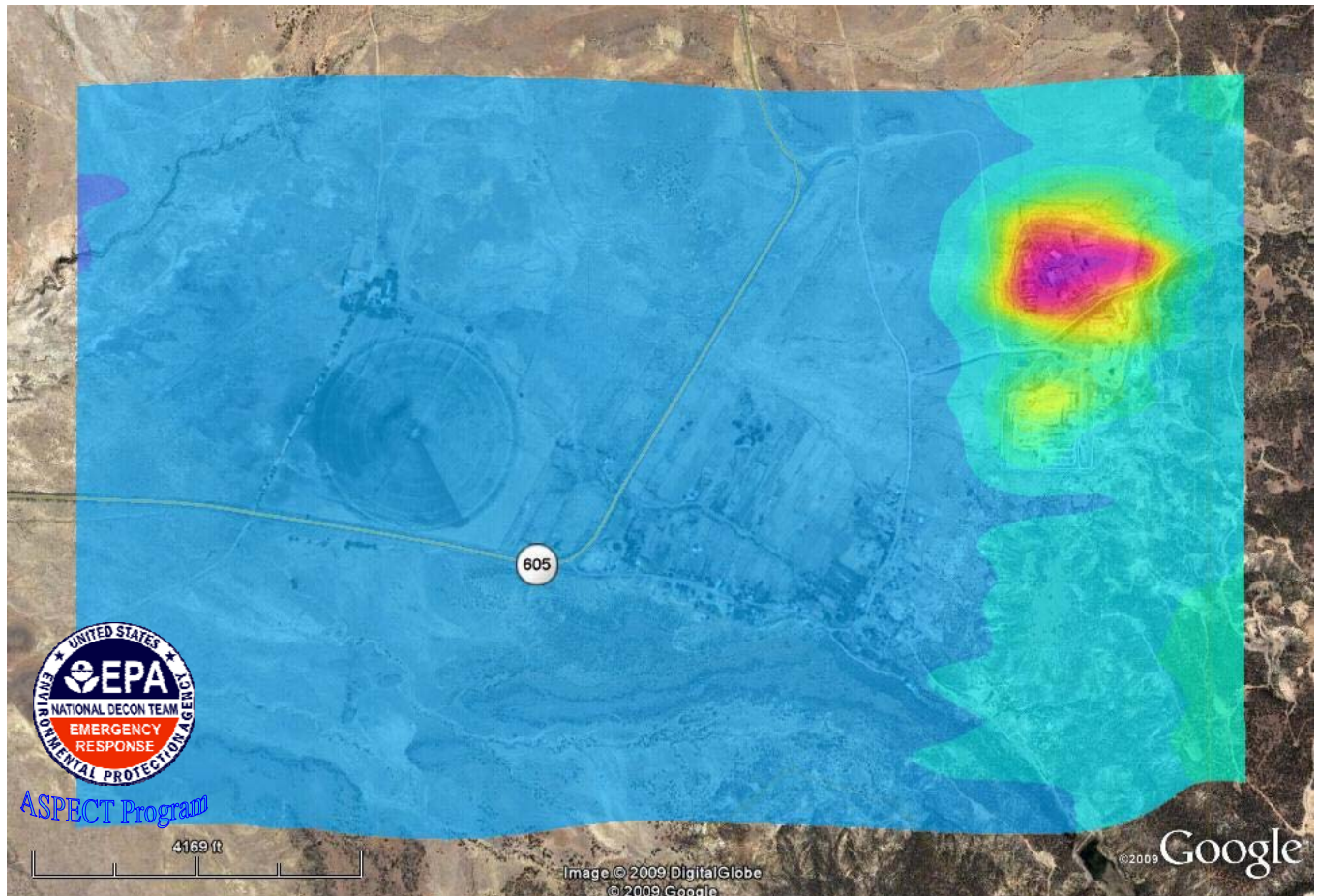
Exposure Rate Contour Maps

(this page is intentionally blank)

**This image should not be used independently to assess potential health risks.
Additional information is necessary to make appropriate health-related decisions.**

Image 20

**Grants Area
San Mateo Survey
Exposure Rate Contour Map
October 7, 2009**



Parameter: Gmm Dose	
< 10,000	50,000 : 60,000
10,000 : 20,000	60,000 : 70,000
20,000 : 30,000	70,000 : 80,000
30,000 : 40,000	80,000 : 90,000
40,000 : 50,000	> 90,000

Exposure Rate ($\mu\text{R/hr}$)

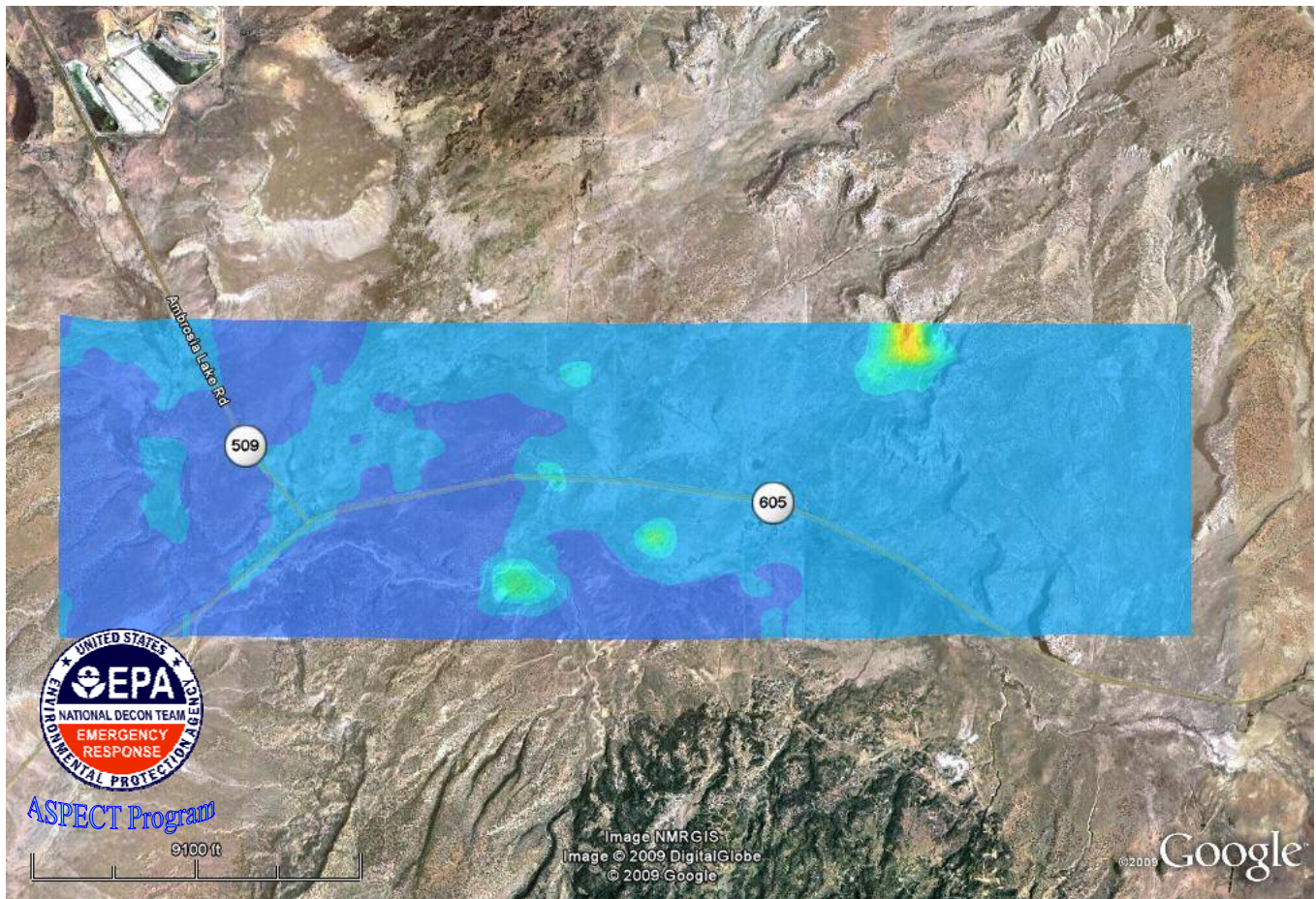
The colors were selected to maximize the variation within the data for illustration purposes only.

Although it appears that the gamma exposure rate is increasing as you fly west to east, this is actually an artifact resulting from rapid elevation changes in the easternmost edges of this particular view.

**This image should not be used independently to assess potential health risks.
Additional information is necessary to make appropriate health-related decisions.**

Image 21

**Grants Area
Crossroads Survey
Exposure Rate Contour Map
October 8, 2009**



Parameter		Gmm Dose	
	< 10,000		50,000 : 60,000
	10,000 : 20,000		60,000 : 70,000
	20,000 : 30,000		70,000 : 80,000
	30,000 : 40,000		80,000 : 90,000
	40,000 : 50,000		> 90,000

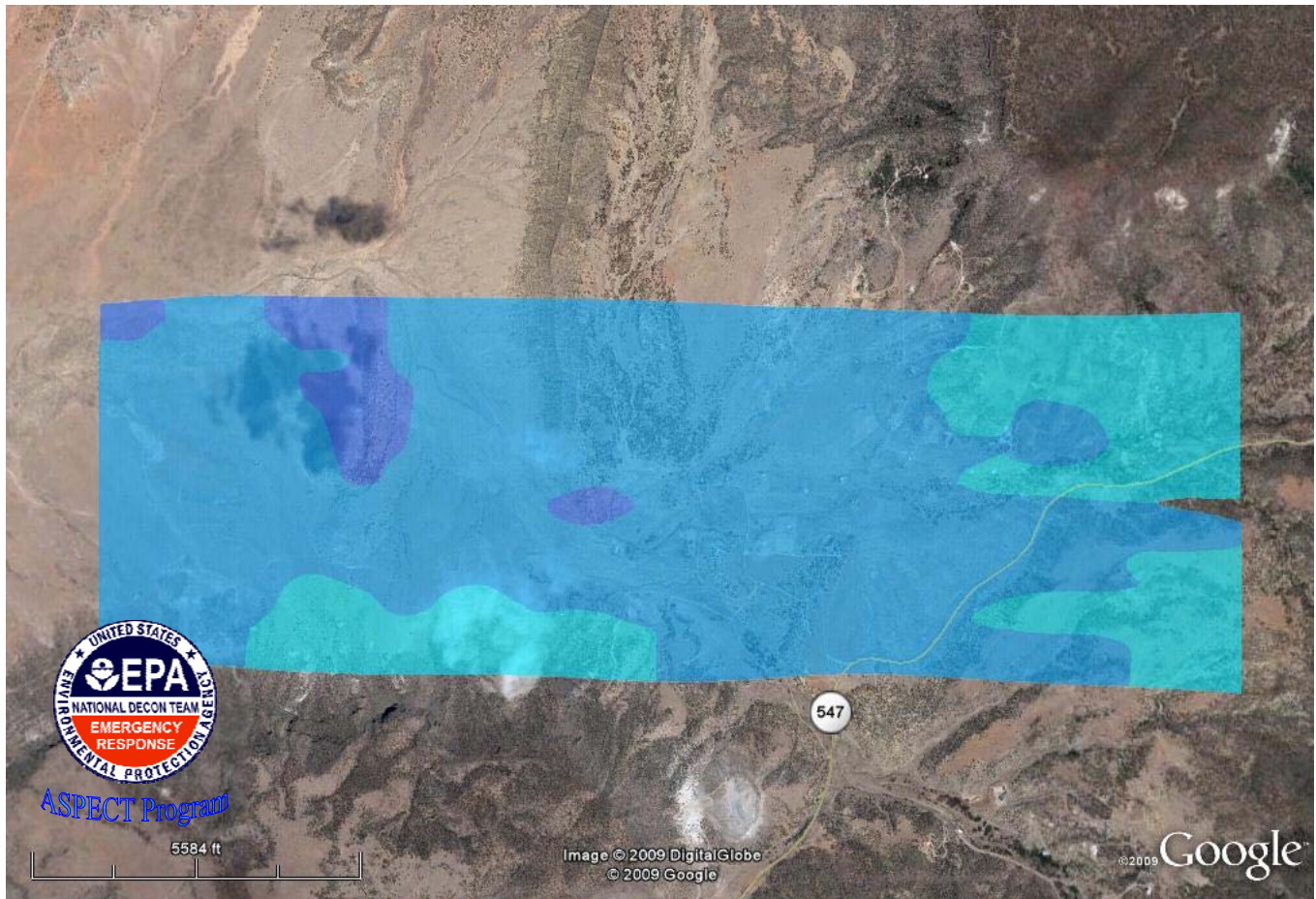
Exposure Rate ($\mu\text{R/hr}$)

The colors were selected to maximize the variation within the data for illustration purposes only.

This image should not be used independently to assess potential health risks.
Additional information is necessary to make appropriate health-related decisions.

Image 22

**Grants Area
Lobo Survey
Exposure Rate Contour Map
October 8, 2009**



Parameter		Gmm Dose
	< 10.000	50.000 : 60.000
	10.000 : 20.000	60.000 : 70.000
	20.000 : 30.000	70.000 : 80.000
	30.000 : 40.000	80.000 : 90.000
	40.000 : 50.000	> 90.000

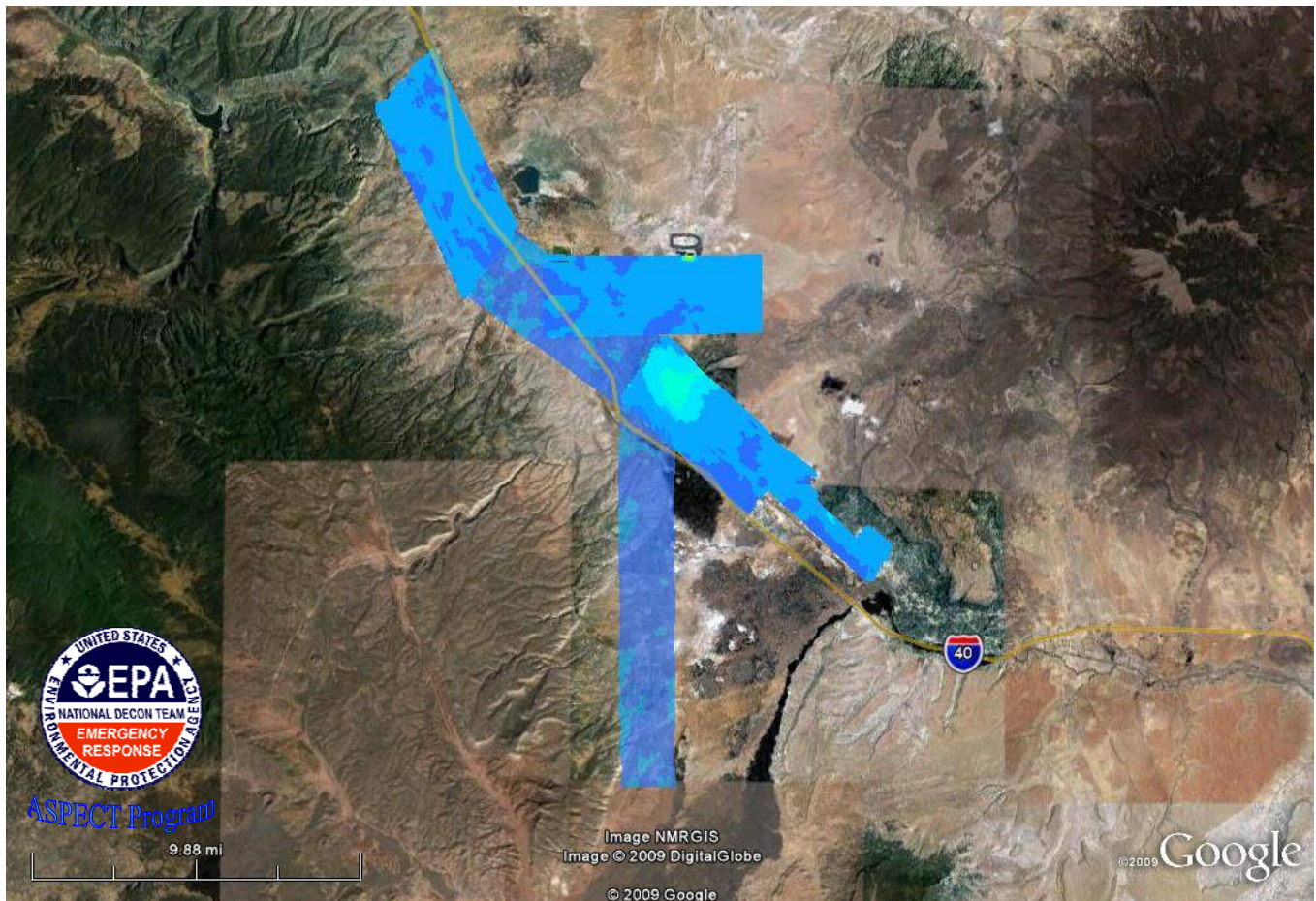
Exposure Rate ($\mu\text{R/hr}$)

The colors were selected to maximize the variation within the data for illustration purposes only.

**This image should not be used independently to assess potential health risks.
Additional information is necessary to make appropriate health-related decisions.**

Image 23

**Grants Area
Grants Area Survey
Exposure Rate Contour Map
October 9-12, 2009**



Parameter		Gmm Dose
	< 10,000	50,000 : 60,000
	10,000 : 20,000	60,000 : 70,000
	20,000 : 30,000	70,000 : 80,000
	30,000 : 40,000	80,000 : 90,000
	40,000 : 50,000	> 90,000

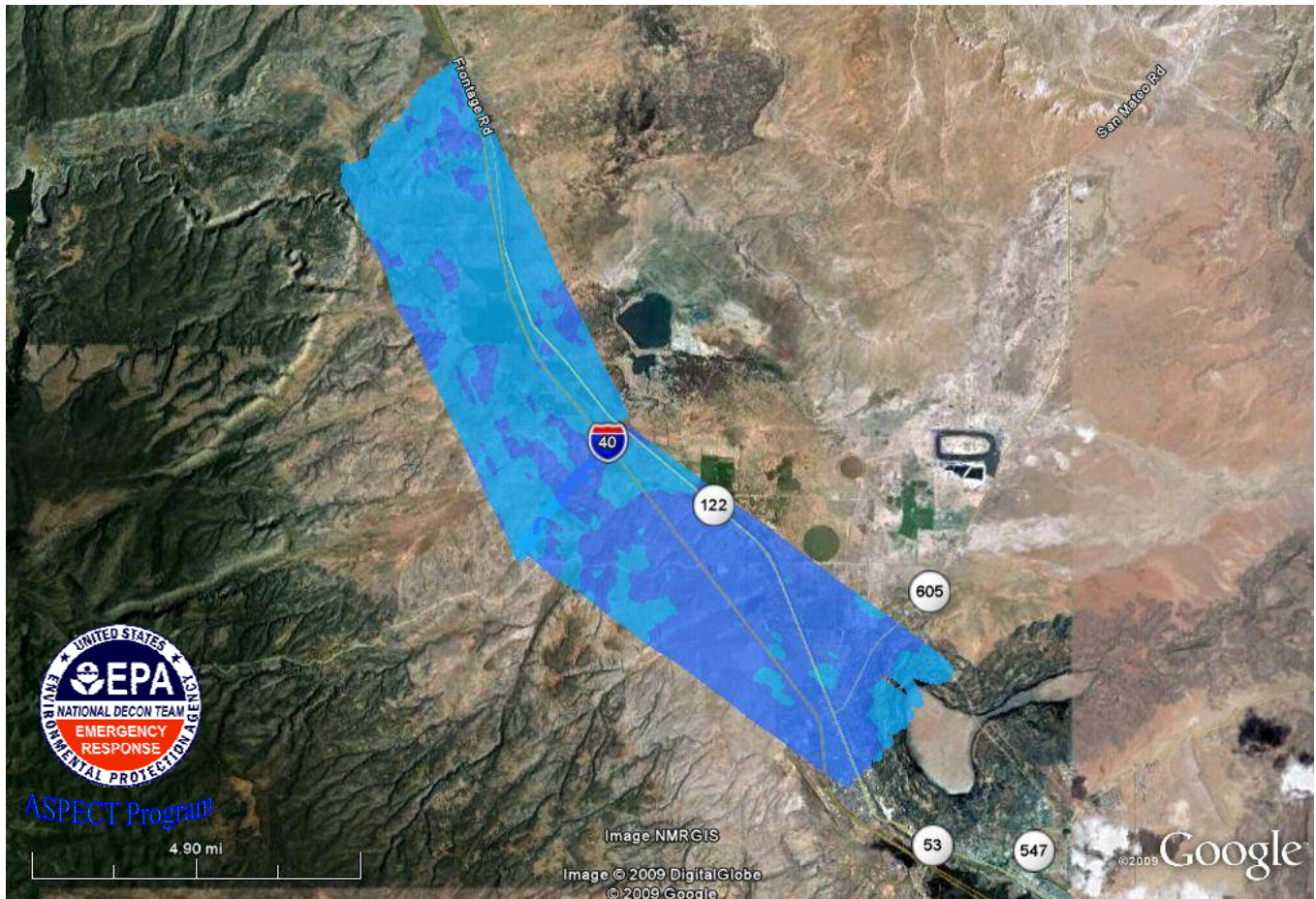
Exposure Rate ($\mu\text{R/hr}$)

The colors were selected to maximize the variation within the data for illustration purposes only.
Rapid elevation changes surrounding the “lava lake” in the central region of this picture cause apparent elevation in exposure rates in this area.

**This image should not be used independently to assess potential health risks.
Additional information is necessary to make appropriate health-related decisions.**

Image 24

**Grants Area
Grants Northern & Central Portion Survey
Exposure Rate Contour Map
October 10, 2009**



Parameter		Gmm Dose	
	< 10,000		50,000 : 60,000
	10,000 : 20,000		60,000 : 70,000
	20,000 : 30,000		70,000 : 80,000
	30,000 : 40,000		80,000 : 90,000
	40,000 : 50,000		> 90,000

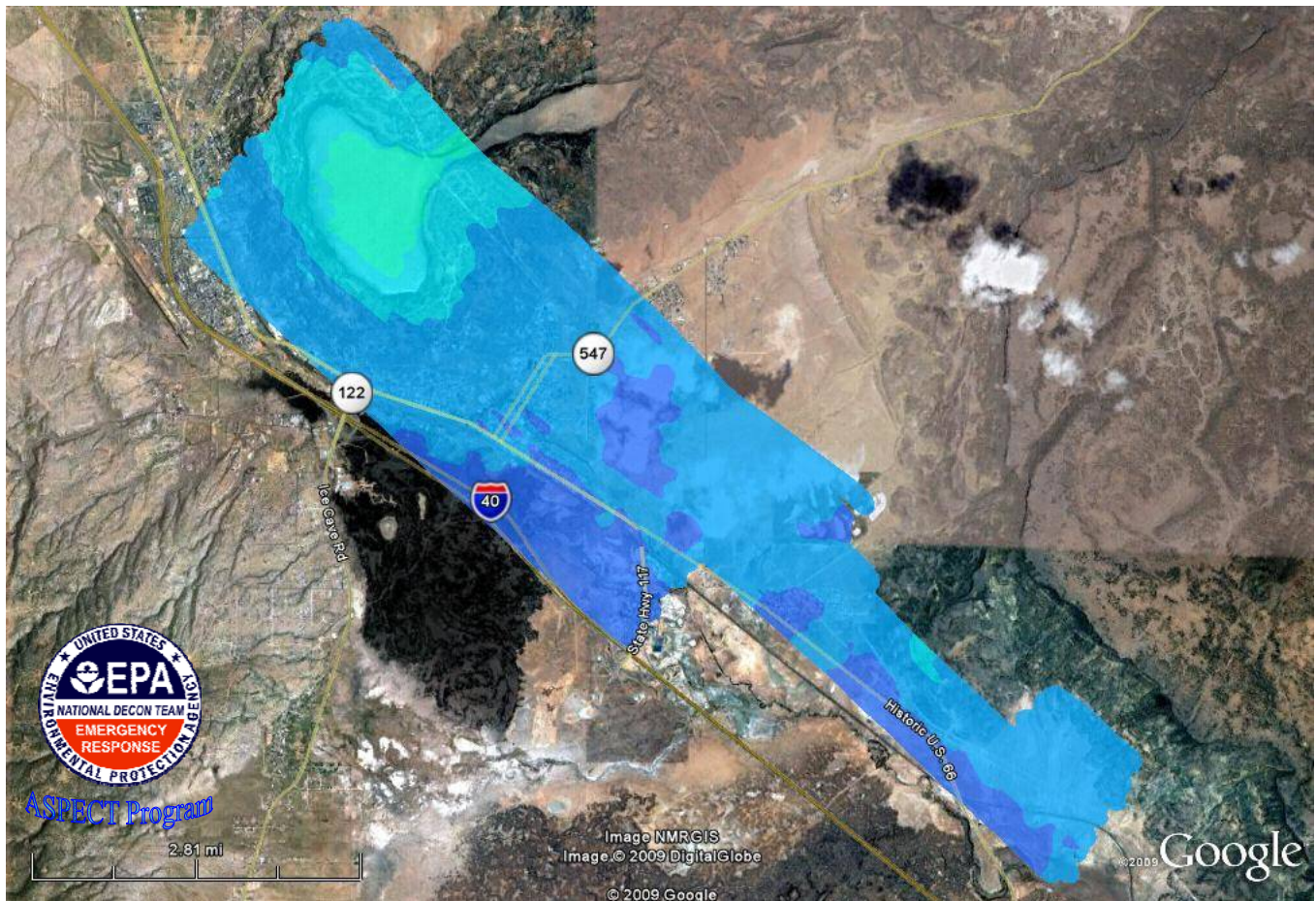
Exposure Rate ($\mu\text{R/hr}$)

The colors were selected to maximize the variation within the data for illustration purposes only.

This image should not be used independently to assess potential health risks.
Additional information is necessary to make appropriate health-related decisions.

Image 25

**Grants Area
Grants Southern Portion Survey
Exposure Rate Contour Map
October 9, 2009**



Parameter: Gmm Dose	
< 10,000	50,000 : 60,000
10,000 : 20,000	60,000 : 70,000
20,000 : 30,000	70,000 : 80,000
30,000 : 40,000	80,000 : 90,000
40,000 : 50,000	> 90,000

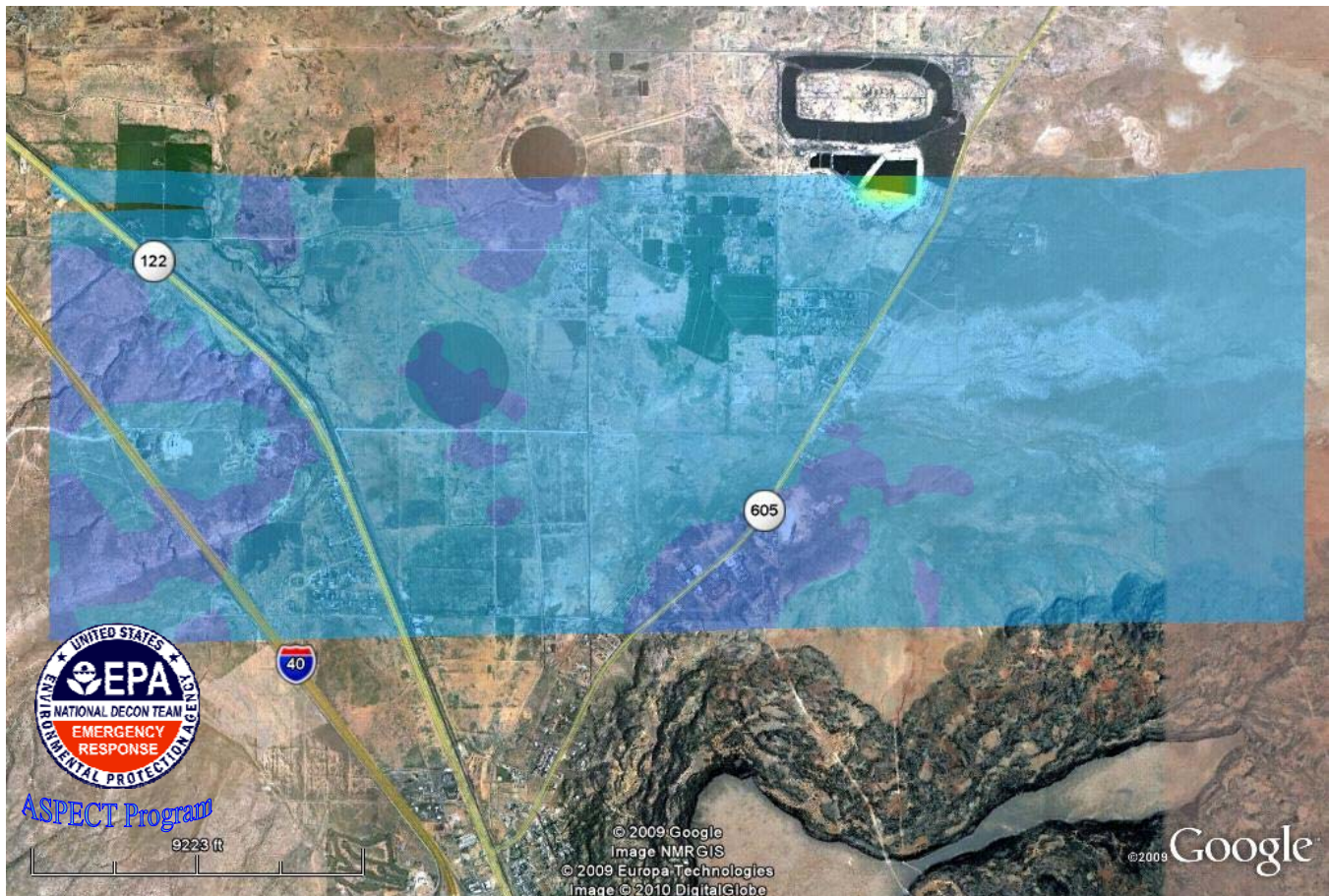
Exposure Rate ($\mu\text{R/hr}$)

The colors were selected to maximize the variation within the data for illustration purposes only. Rapid elevation changes surrounding the “lava lake” in the northwest region of this picture cause apparent elevation in exposure rates in this area.

**This image should not be used independently to assess potential health risks.
Additional information is necessary to make appropriate health-related decisions.**

Image 26

**Grants Area
Grants Eastern Portion Survey
Exposure Rate Contour Map
October 12, 2009**



Parameter	Gmm Dose	
< 10,000	50,000 : 60,000	
10,000 : 20,000	60,000 : 70,000	
20,000 : 30,000	70,000 : 80,000	
30,000 : 40,000	80,000 : 90,000	
40,000 : 50,000	> 90,000	

Exposure Rate ($\mu\text{R/hr}$)

The colors were selected to maximize the variation within the data for illustration purposes only.

This image should not be used independently to assess potential health risks.
Additional information is necessary to make appropriate health-related decisions.

Image 27

**Grants Area
Grants Southernmost Area Survey
Exposure Rate Contour Map
October 12, 2009**



Parameter: Gmm Dose	
< 10,000	50,000 : 60,000
10,000 : 20,000	60,000 : 70,000
20,000 : 30,000	70,000 : 80,000
30,000 : 40,000	80,000 : 90,000
40,000 : 50,000	> 90,000

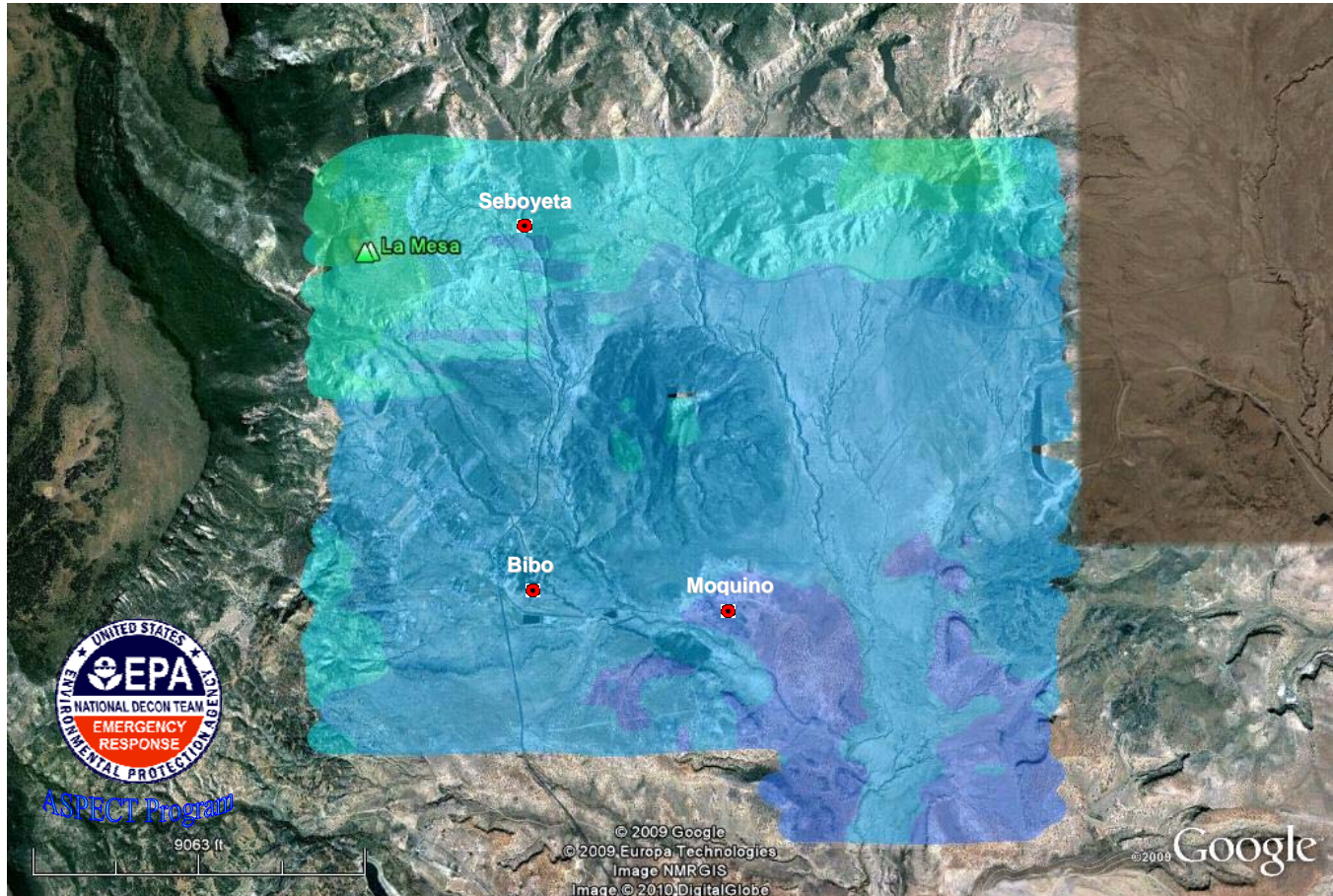
Exposure Rate ($\mu\text{R/hr}$)





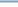






The colors were selected to maximize the variation within the data for illustration purposes only.

This image should not be used independently to assess potential health risks. Additional information is necessary to make appropriate health-related decisions.

Image 30

**Cebolleta Land Grant Area Survey
Exposure Rate Contour Map
October 15, 2009**



Parameter	Gmm Dose		
	< 10,000		50,000 : 60,000
	10,000 : 20,000		60,000 : 70,000
	20,000 : 30,000		70,000 : 80,000
	30,000 : 40,000		80,000 : 90,000
	40,000 : 50,000		> 90,000

Exposure Rate ($\mu\text{R/hr}$)

The colors were selected to maximize the variation within the data for illustration purposes only.

**This image should not be used independently to assess potential health risks.
Additional information is necessary to make appropriate health-related decisions.**

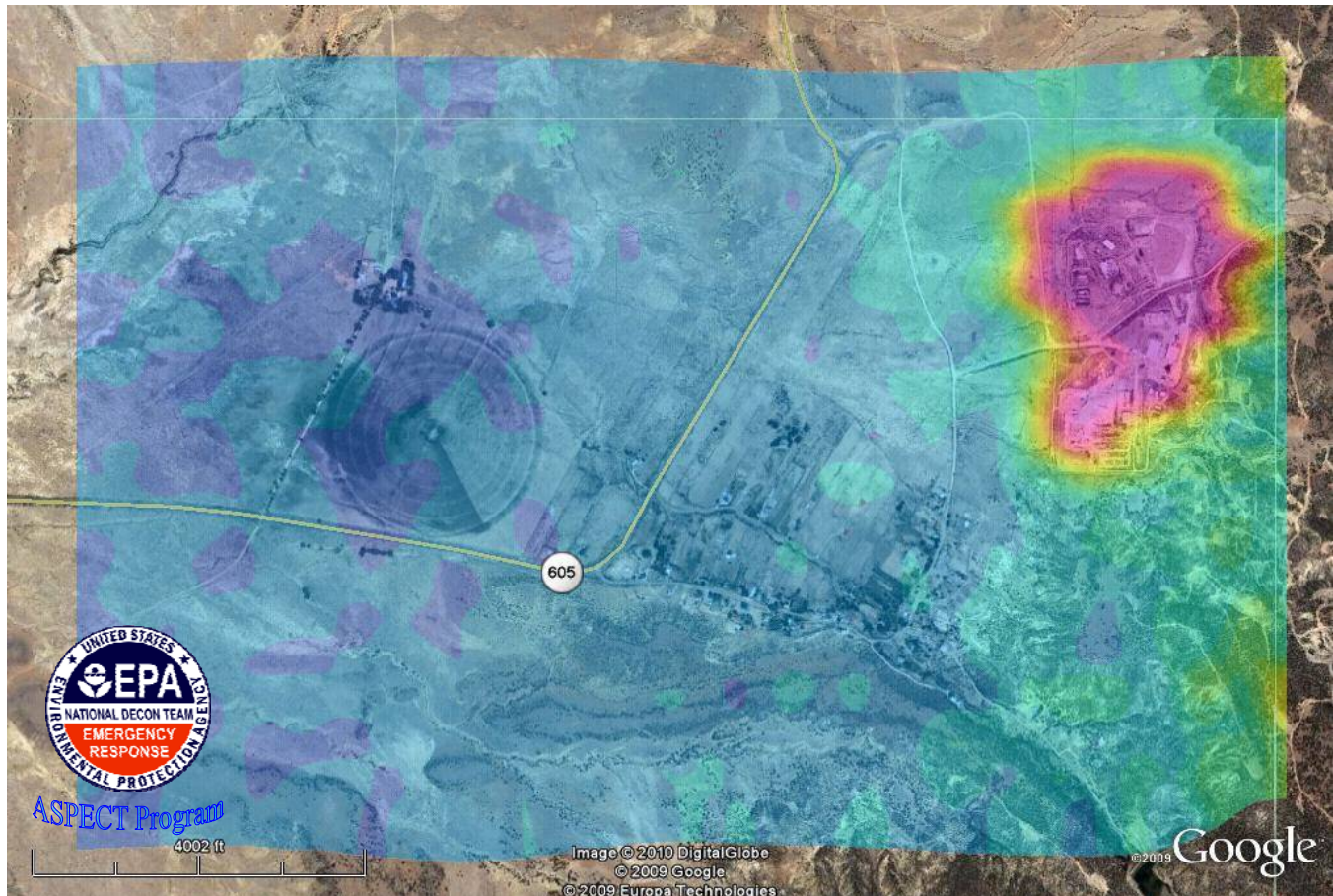
Excess Uranium Concentrations

(this page is intentionally blank)

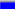









**This image should not be used independently to assess potential health risks.
Additional information is necessary to make appropriate health-related decisions.**

Image 31

**Grants Area
San Mateo Survey
Uranium Concentration Contour Map
October 7, 2009**



Parameter

	< 1.0000		5.0000 : 6.0000
	1.0000 : 2.0000		6.0000 : 7.0000
	2.0000 : 3.0000		7.0000 : 8.0000
	3.0000 : 4.0000		8.0000 : 9.0000
	4.0000 : 5.0000		> 9.0000

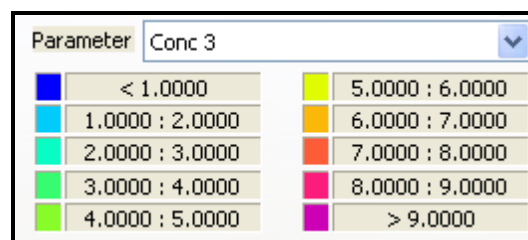
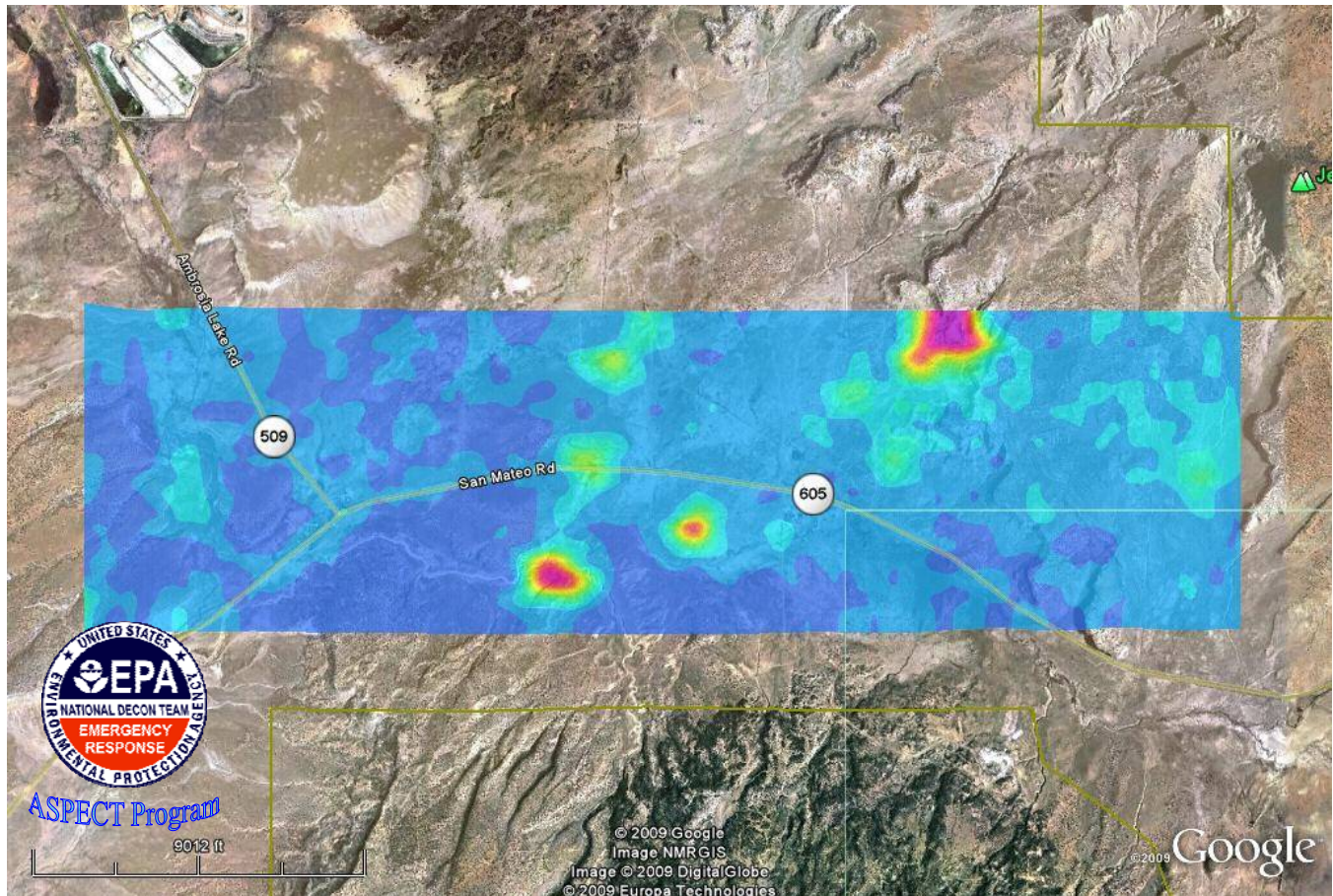
Soil concentration in pCi/g.

The colors were selected to maximize the variation within the data for illustration purposes only.

This image should not be used independently to assess potential health risks.
Additional information is necessary to make appropriate health-related decisions.

Image 32

**Grants Area
Crossroads Survey
Uranium Concentration Contour Map
October 8, 2009**



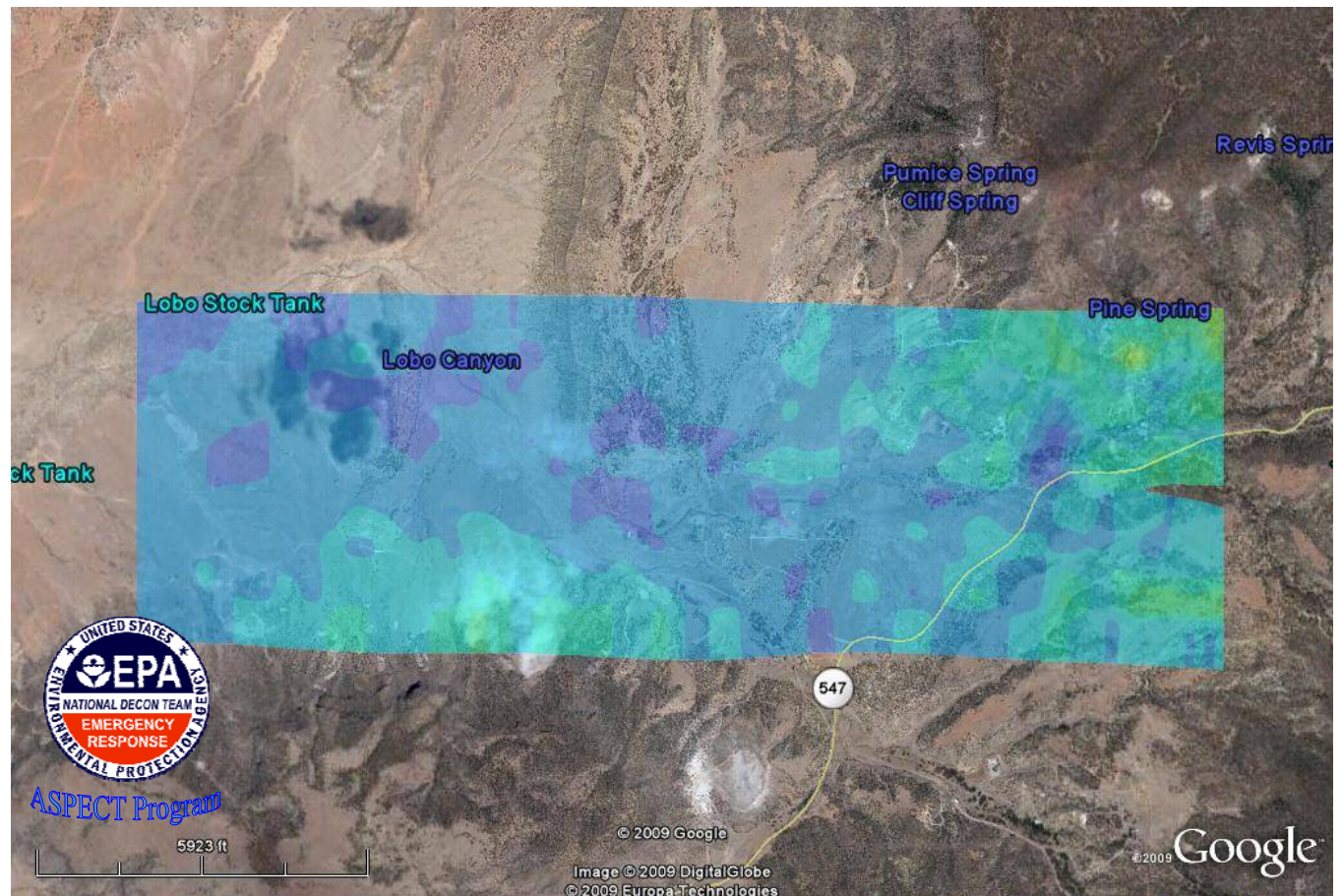
Soil concentration in pCi/g

The colors were selected to maximize the variation within the data for illustration purposes only.

**This image should not be used independently to assess potential health risks.
Additional information is necessary to make appropriate health-related decisions.**

Image 33

**Grants Area
Lobo Survey
Uranium Concentration Contour Map
October 8, 2009**



Parameter <input type="text" value="Conc 3"/>	
■ < 1.0000	■ 5.0000 : 6.0000
■ 1.0000 : 2.0000	■ 6.0000 : 7.0000
■ 2.0000 : 3.0000	■ 7.0000 : 8.0000
■ 3.0000 : 4.0000	■ 8.0000 : 9.0000
■ 4.0000 : 5.0000	■ > 9.0000

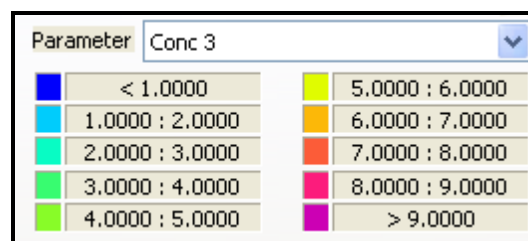
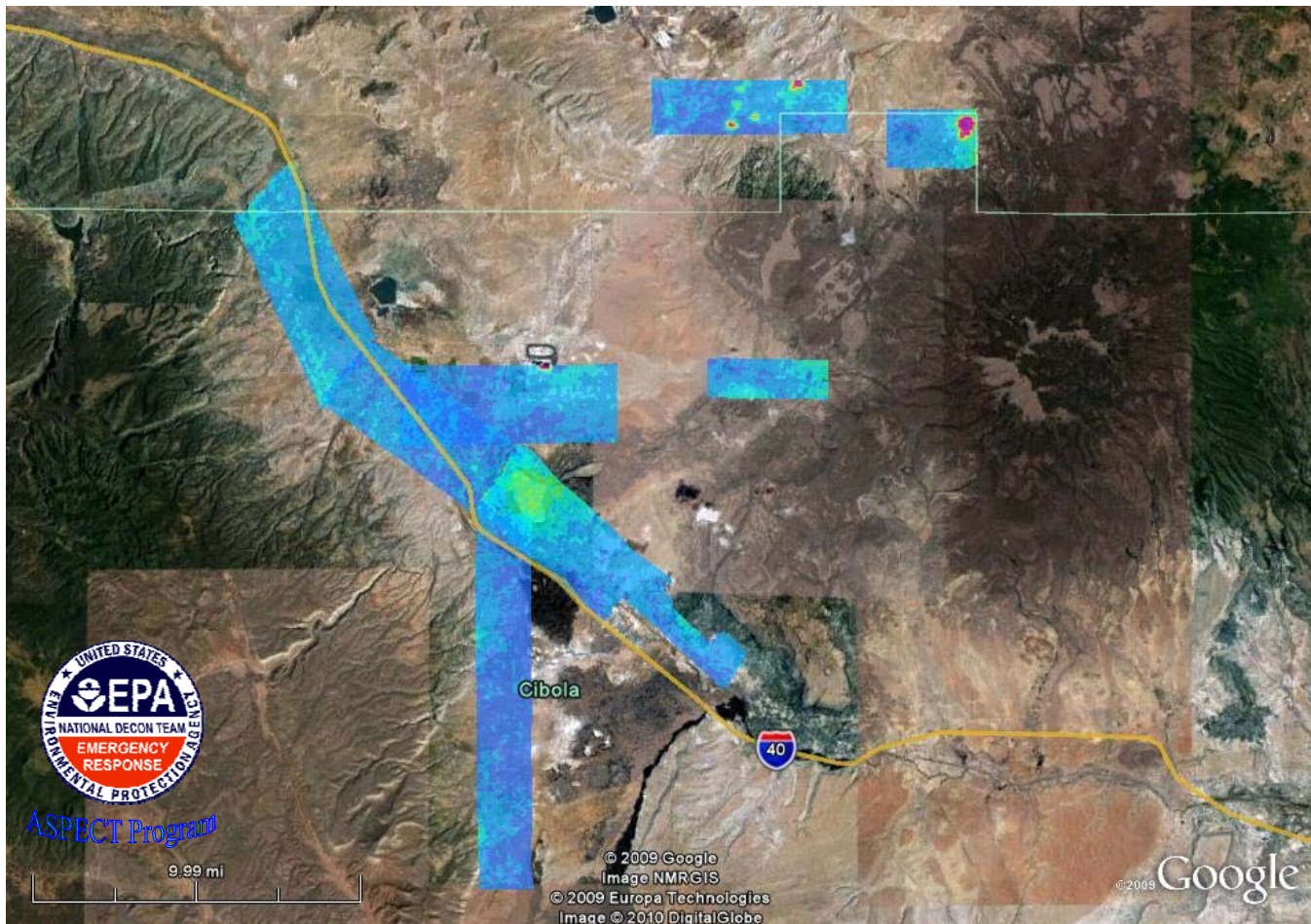
Soil concentration in pCi/g

The colors were selected to maximize the variation within the data for illustration purposes only.

**This image should not be used independently to assess potential health risks.
Additional information is necessary to make appropriate health-related decisions.**

Image 34

**Grants Area Survey
Uranium Concentration Contour Map
October 9-12, 2009**



Soil concentration in pCi/g

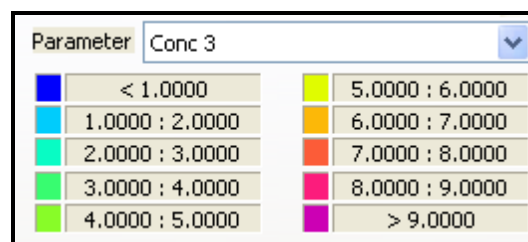
The colors were selected to maximize the variation within the data for illustration purposes only.

Rapid elevation changes surrounding the “lava lake” in the northwest region of this picture cause apparent increase in uranium concentrations in this area.

**This image should not be used independently to assess potential health risks.
Additional information is necessary to make appropriate health-related decisions.**

Image 35

**Grants Area
Grants Area Northern Portion Survey
Uranium Concentration Contour Map
October 10, 2009**



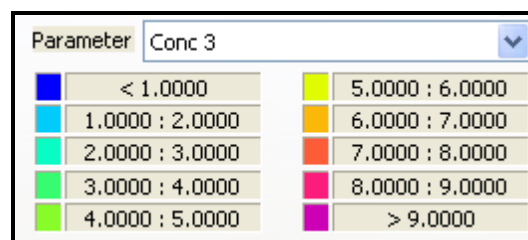
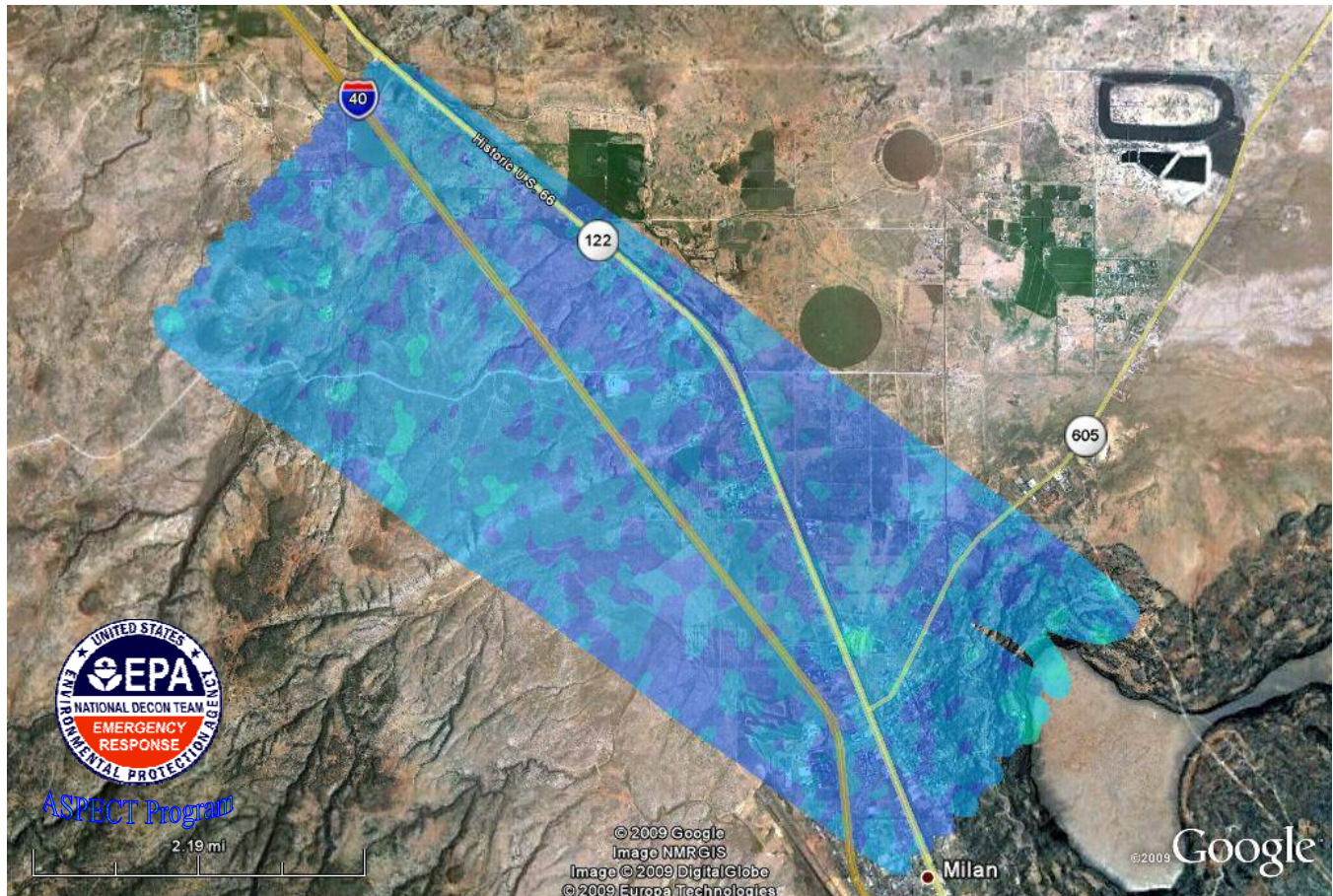
Soil concentration in pCi/g

The colors were selected to maximize the variation within the data for illustration purposes only.

**This image should not be used independently to assess potential health risks.
Additional information is necessary to make appropriate health-related decisions.**

Image 36

**Grants Area
Grants Area Central Portion Survey
Uranium Concentration Contour Map
October 10, 2009**



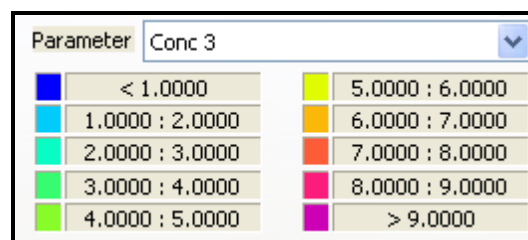
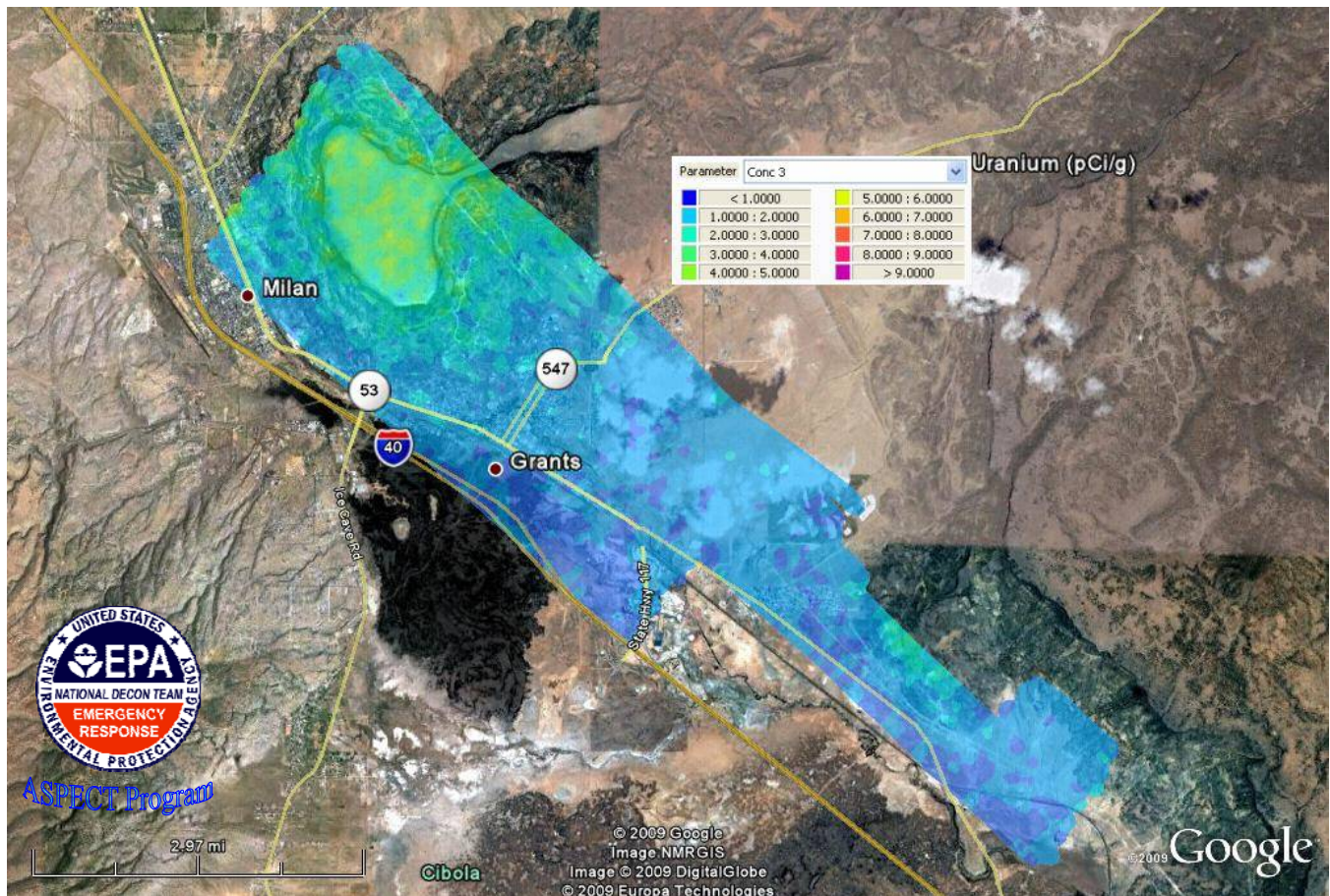
Soil concentration in pCi/g

The colors were selected to maximize the variation within the data for illustration purposes only.

**This image should not be used independently to assess potential health risks.
Additional information is necessary to make appropriate health-related decisions.**

Image 37

**Grants Area
Grants Area South Survey
Uranium Concentration Contour Map
October 9, 2009**



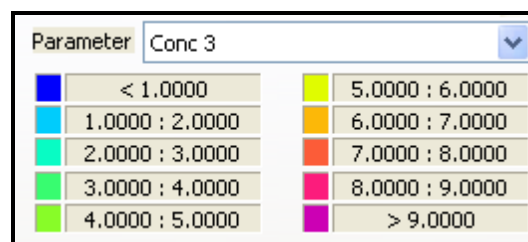
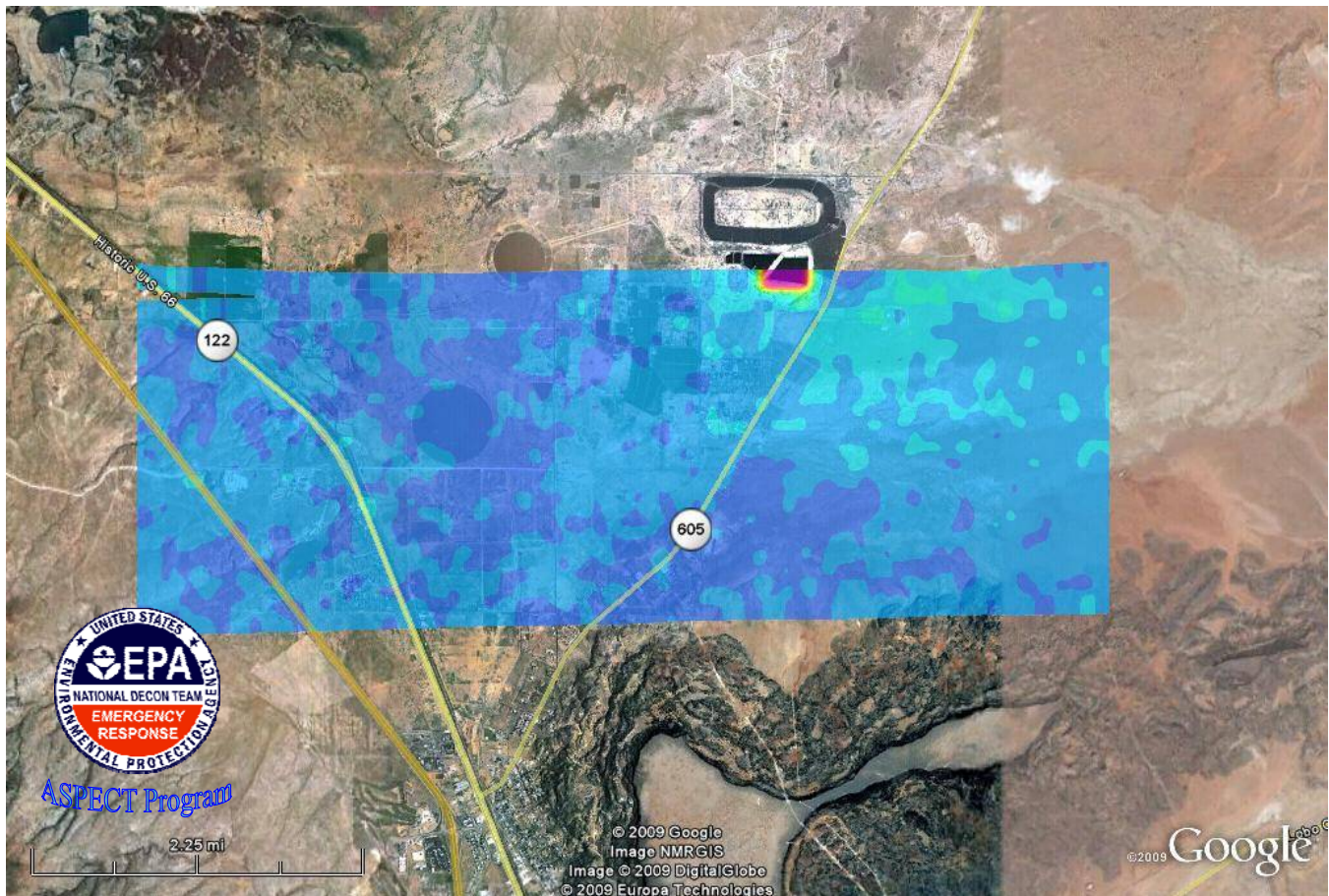
Soil concentration in pCi/g

The colors were selected to maximize the variation within the data for illustration purposes only.
Rapid elevation changes surrounding the “lava lake” in the northwest region of this picture cause apparent increase in uranium concentrations in this area.

**This image should not be used independently to assess potential health risks.
Additional information is necessary to make appropriate health-related decisions.**

Image 38

**Grants Area
Grants Area East Survey
Uranium Concentration Contour Map
October 12, 2009**



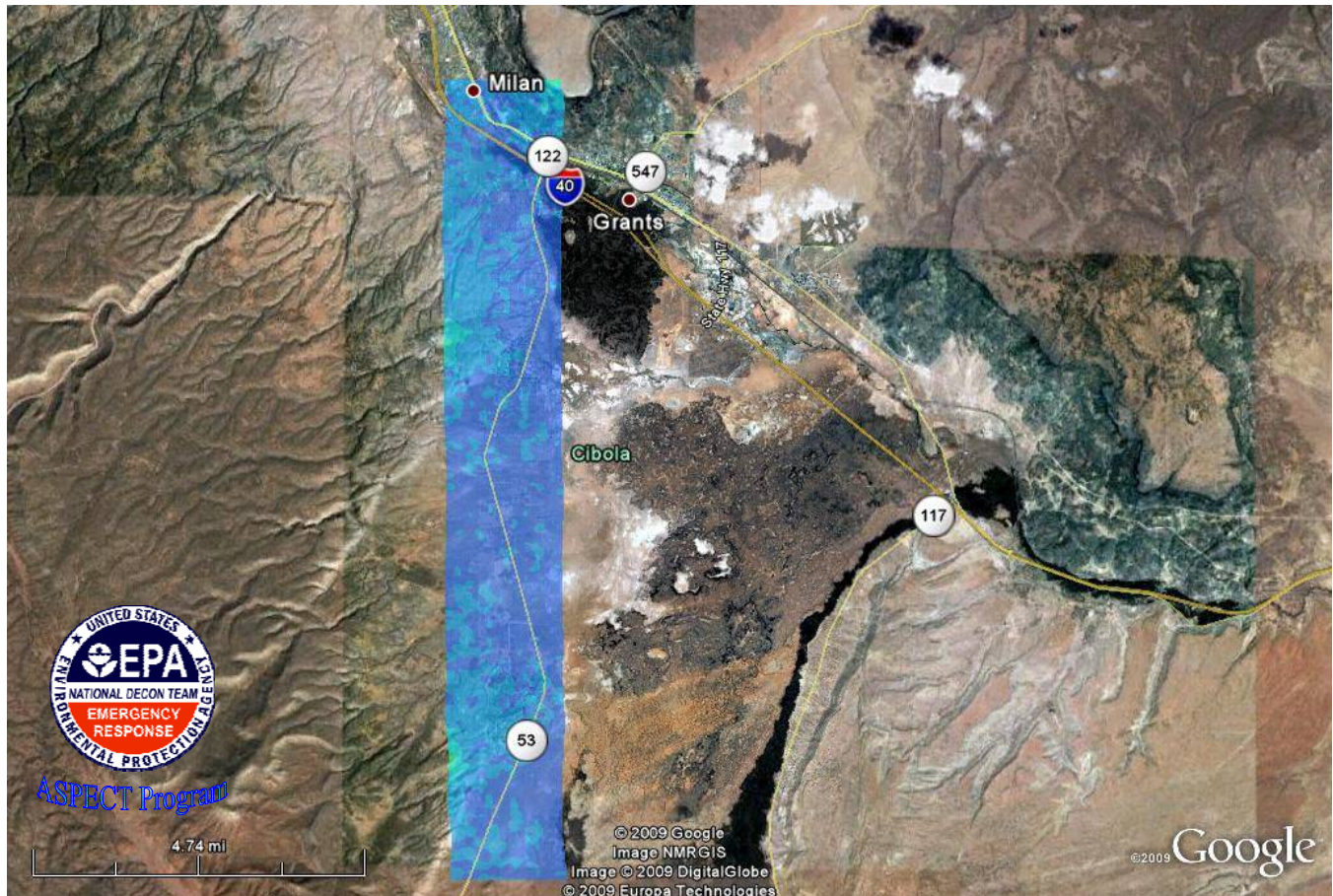
Soil concentration in pCi/g

The colors were selected to maximize the variation within the data for illustration purposes only.

**This image should not be used independently to assess potential health risks.
Additional information is necessary to make appropriate health-related decisions.**

Image 39

**Grants Area
Grants Area Southernmost Survey
Uranium Concentration Contour Map
October 12, 2009**



Parameter	Conc 3
< 1.0000	5.0000 : 6.0000
1.0000 : 2.0000	6.0000 : 7.0000
2.0000 : 3.0000	7.0000 : 8.0000
3.0000 : 4.0000	8.0000 : 9.0000
4.0000 : 5.0000	> 9.0000

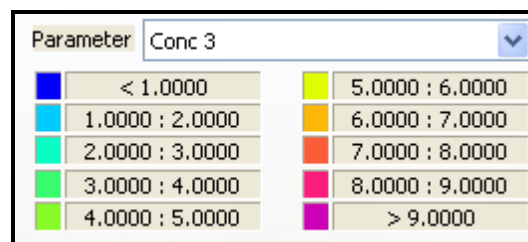
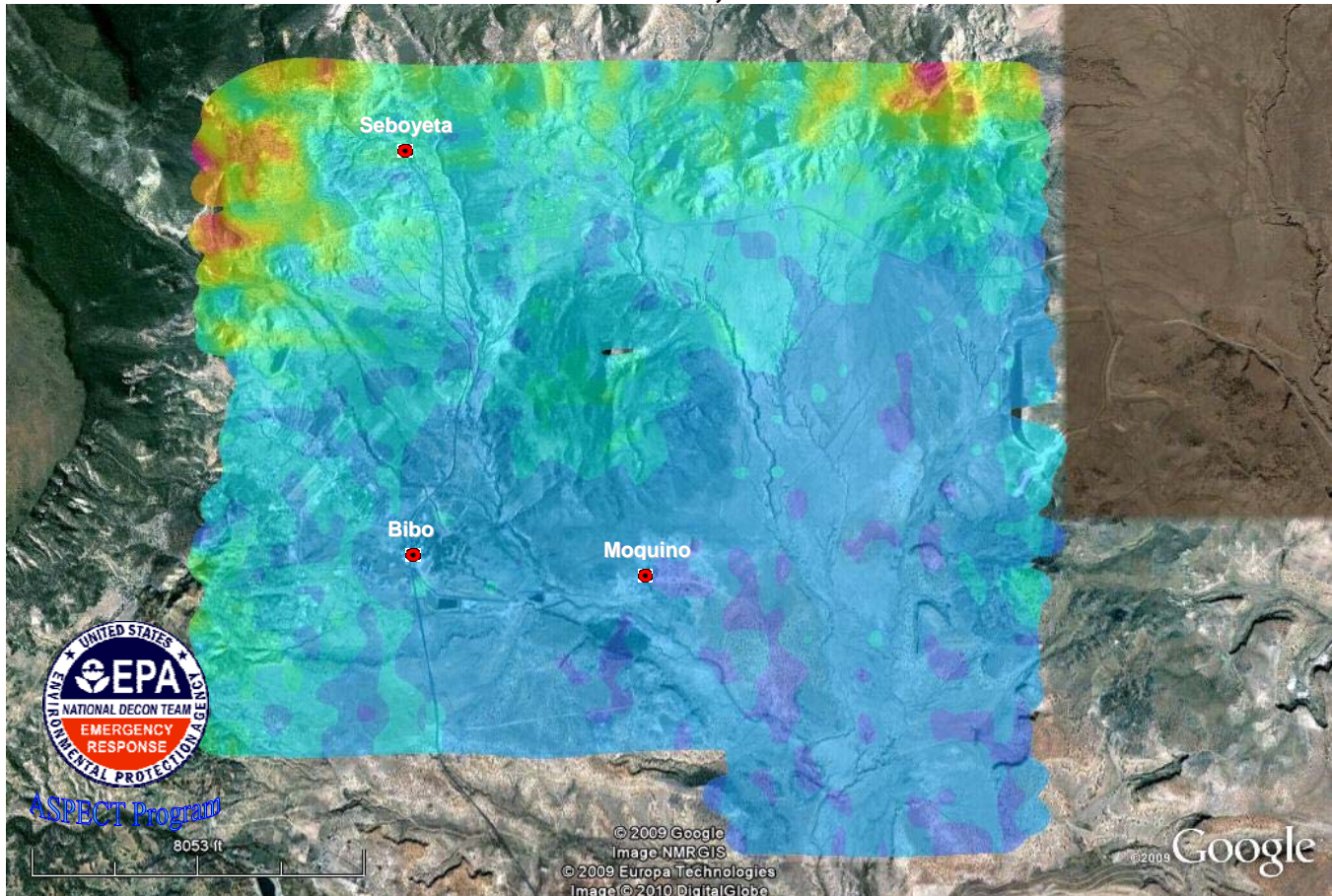
Soil concentration in pCi/g

The colors were selected to maximize the variation within the data for illustration purposes only.

**This image should not be used independently to assess potential health risks.
Additional information is necessary to make appropriate health-related decisions.**

Image 43

**Ceboletta Land Grant Survey
Uranium Concentration Contour Map
October 15, 2009**



Soil concentration in pCi/g

The colors were selected to maximize the variation within the data for illustration purposes only.

The increased count rate activity on northern boarder is an artifact produced by a "topography effect" where additional counts are detected as a result of large changes in the surface elevation and terrain.

**This image should not be used independently to assess potential health risks.
Additional information is necessary to make appropriate health-related decisions.**

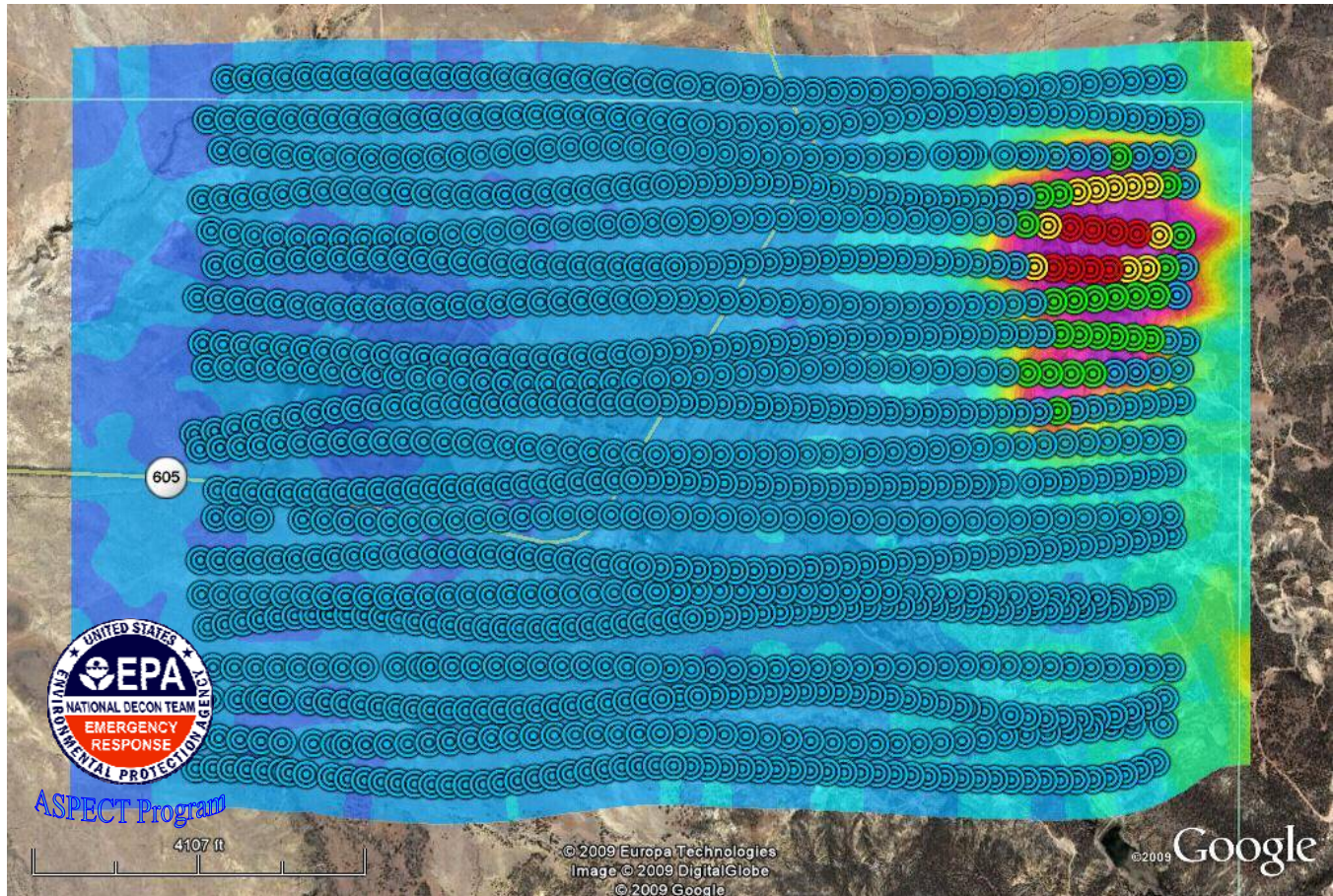
Sigma Plots vs. Uranium Concentration

(this page is intentionally blank)

**This image should not be used independently to assess potential health risks.
Additional information is necessary to make appropriate health-related decisions.**

Image 44

**Grants Area
San Mateo Survey
Sigma Plot Overlay onto
Uranium Concentration Contour Map
October 7, 2009**



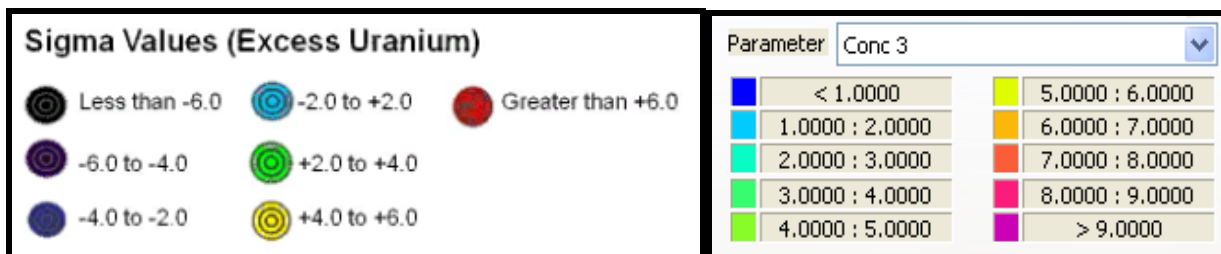
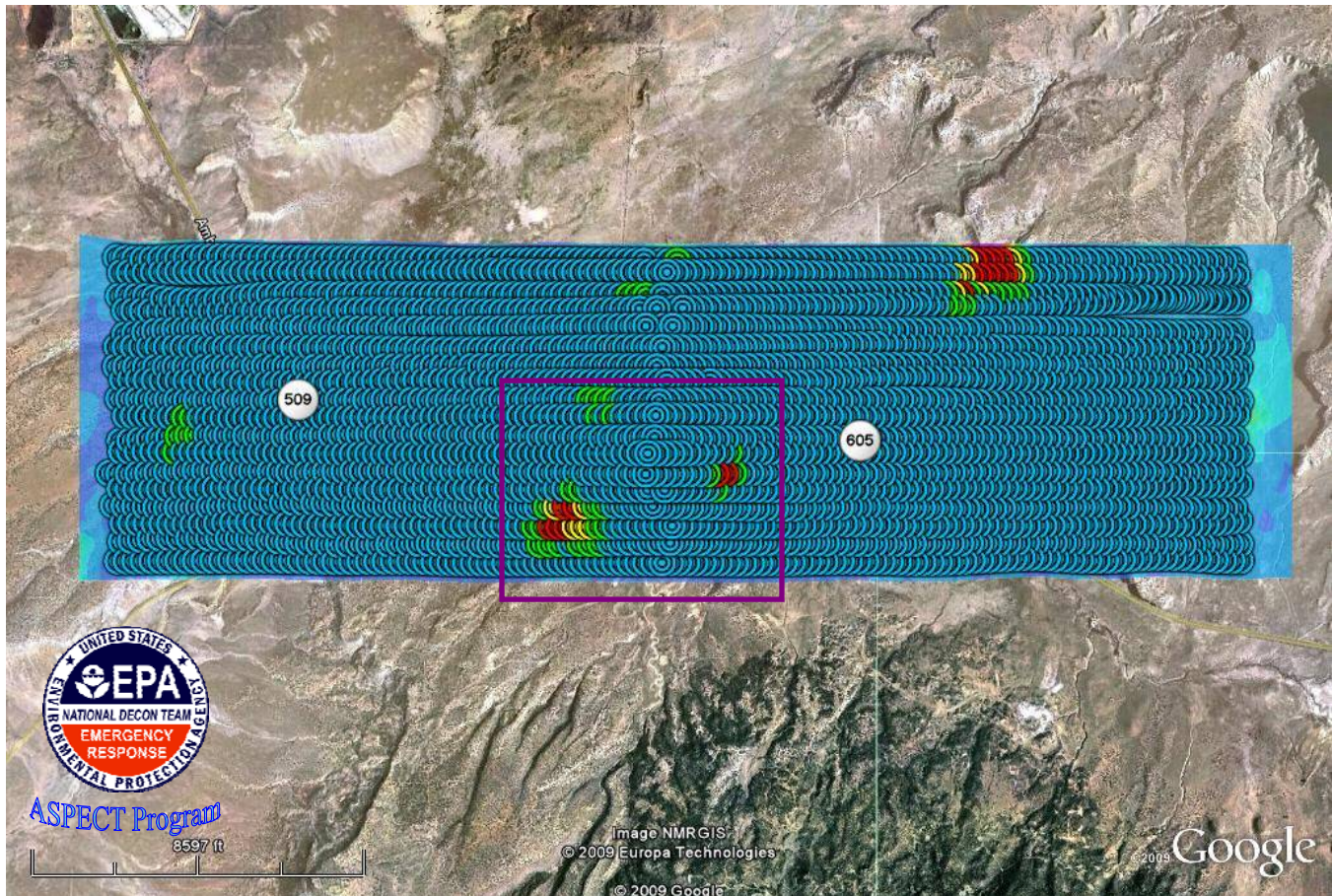
Uranium concentrations are in pCi/g

The colors were selected to maximize the variation within the data for illustration purposes only.

**This image should not be used independently to assess potential health risks.
Additional information is necessary to make appropriate health-related decisions.**

Image 45

**Grants Area
Crossroads Survey
Sigma Plot Overlay onto
Uranium Concentration Contour Map
October 8, 2009**



Uranium concentrations are in pCi/g



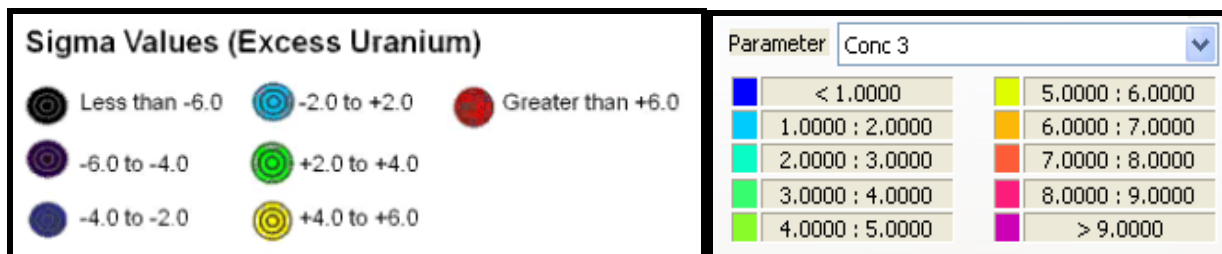
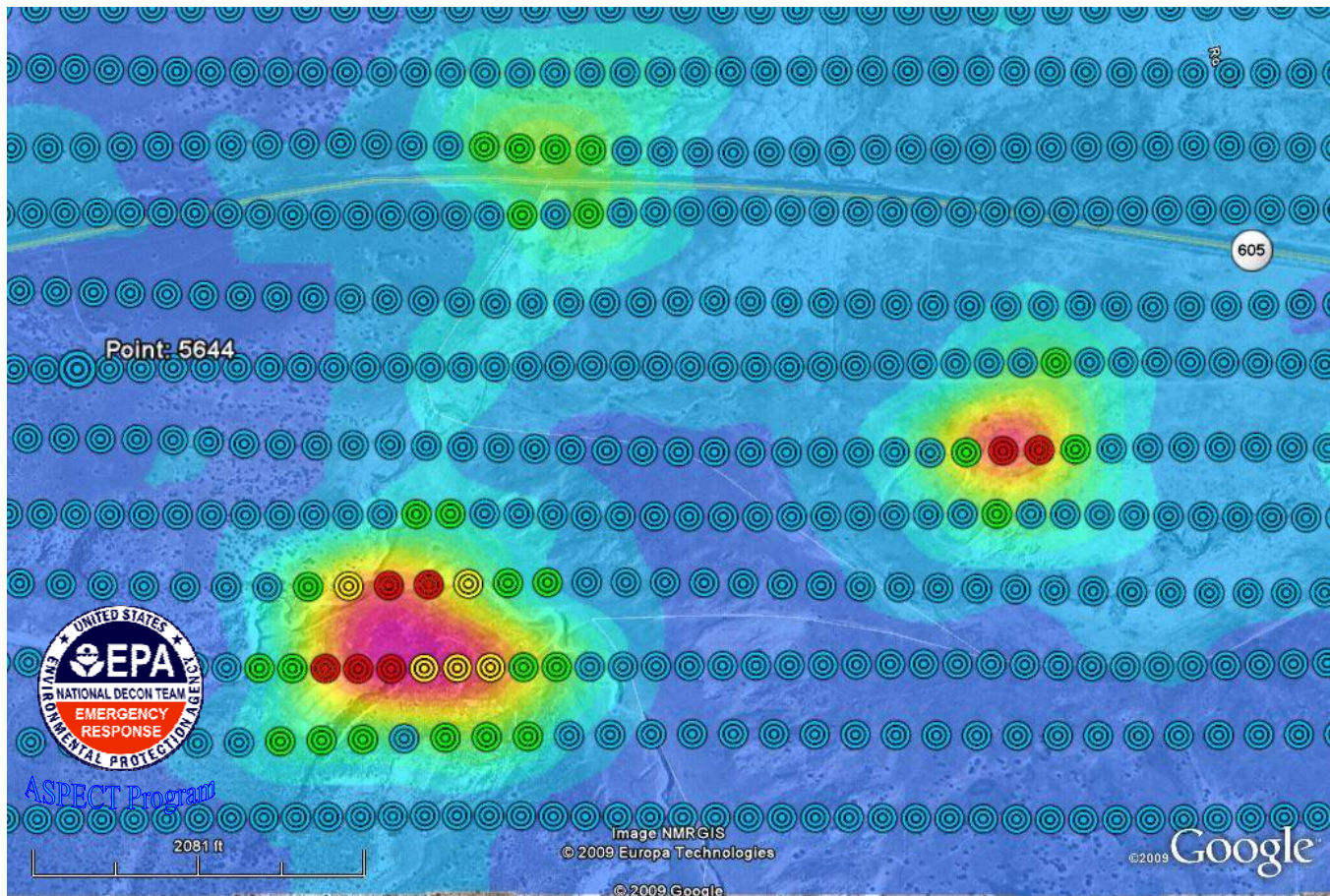
Indicates the enlarged area for the subsequent map

The colors were selected to maximize the variation within the data for illustration purposes only.

**This image should not be used independently to assess potential health risks.
Additional information is necessary to make appropriate health-related decisions.**

Image 46

**Grants Area
Crossroads Survey
Sigma Plot Overlay onto
Uranium Concentration Contour Map
October 8, 2009**



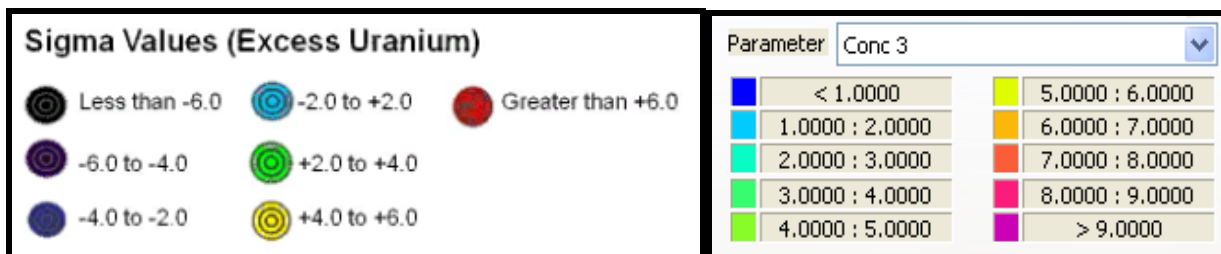
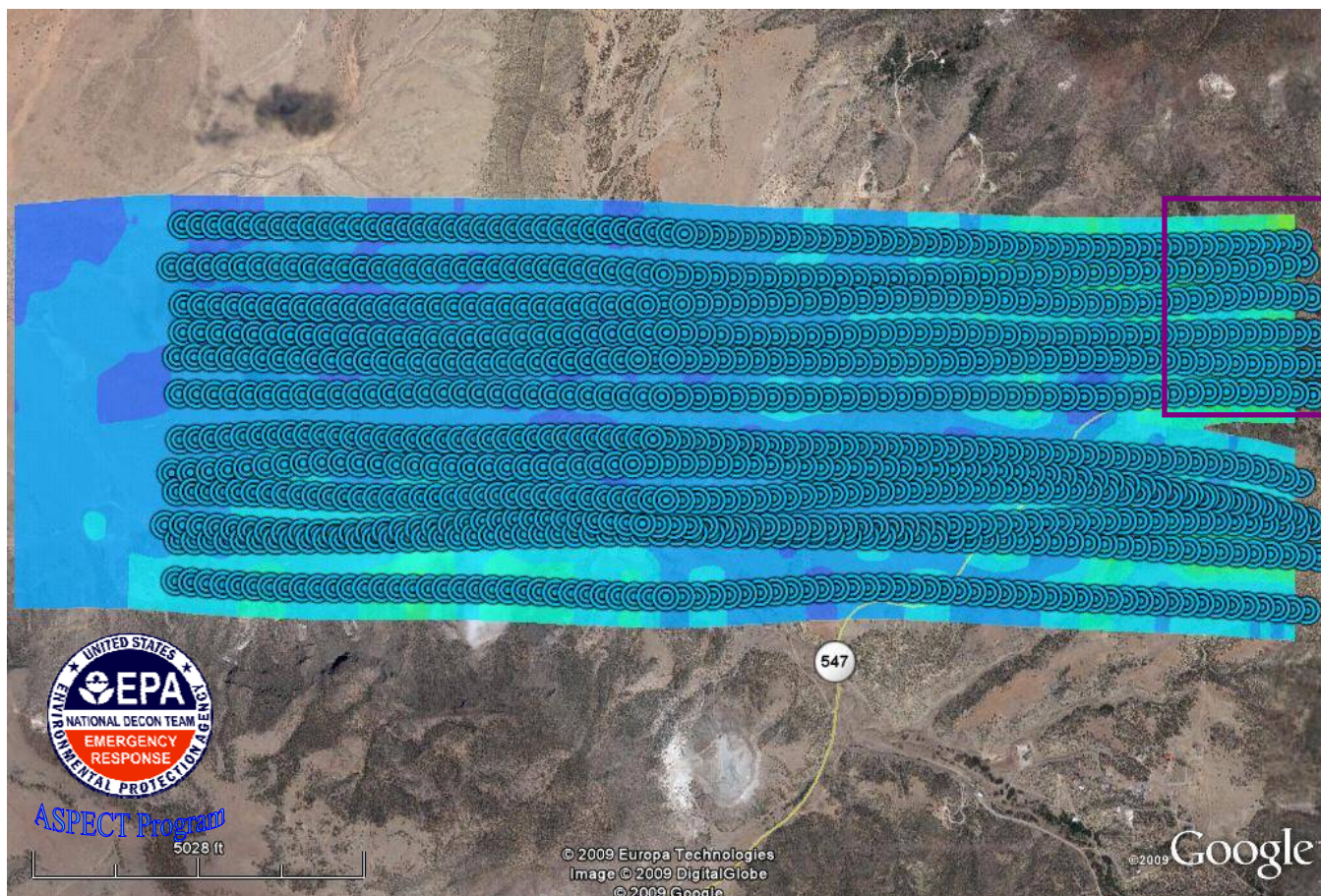
Uranium concentrations are in pCi/g

The colors were selected to maximize the variation within the data for illustration purposes only.

**This image should not be used independently to assess potential health risks.
Additional information is necessary to make appropriate health-related decisions.**

Image 47

**Grants Area
Lobo Survey
Sigma Plot Overlay onto
Uranium Concentration Contour Map
October 8, 2009**



Uranium concentrations are in pCi/g



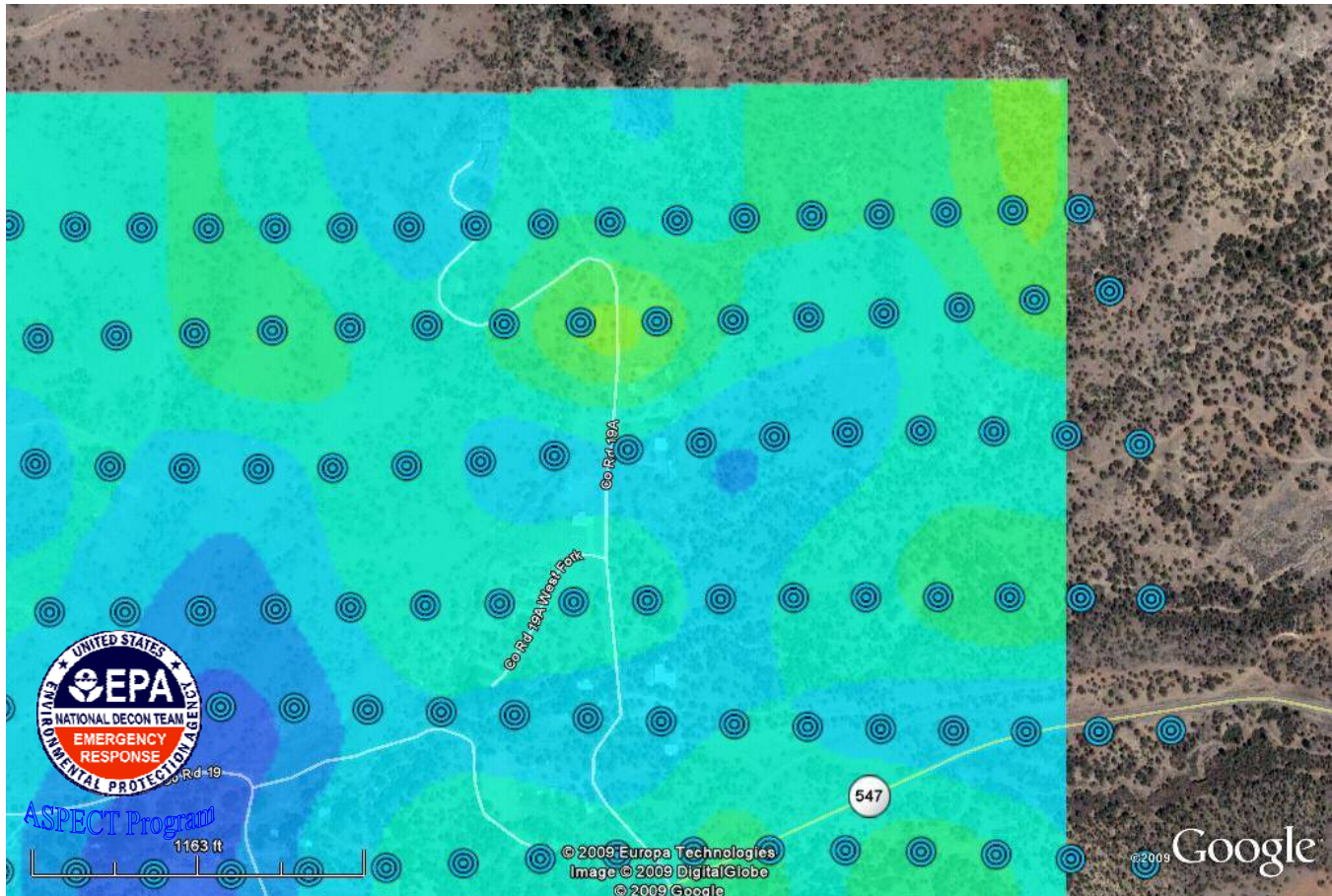
Indicates the enlarged area for the subsequent map

The colors were selected to maximize the variation within the data for illustration purposes only.

**This image should not be used independently to assess potential health risks.
Additional information is necessary to make appropriate health-related decisions.**

Image 48

**Grants Area
Lobo Survey
Sigma Plot Overlay onto
Uranium Concentration Contour Map
October 8, 2009**



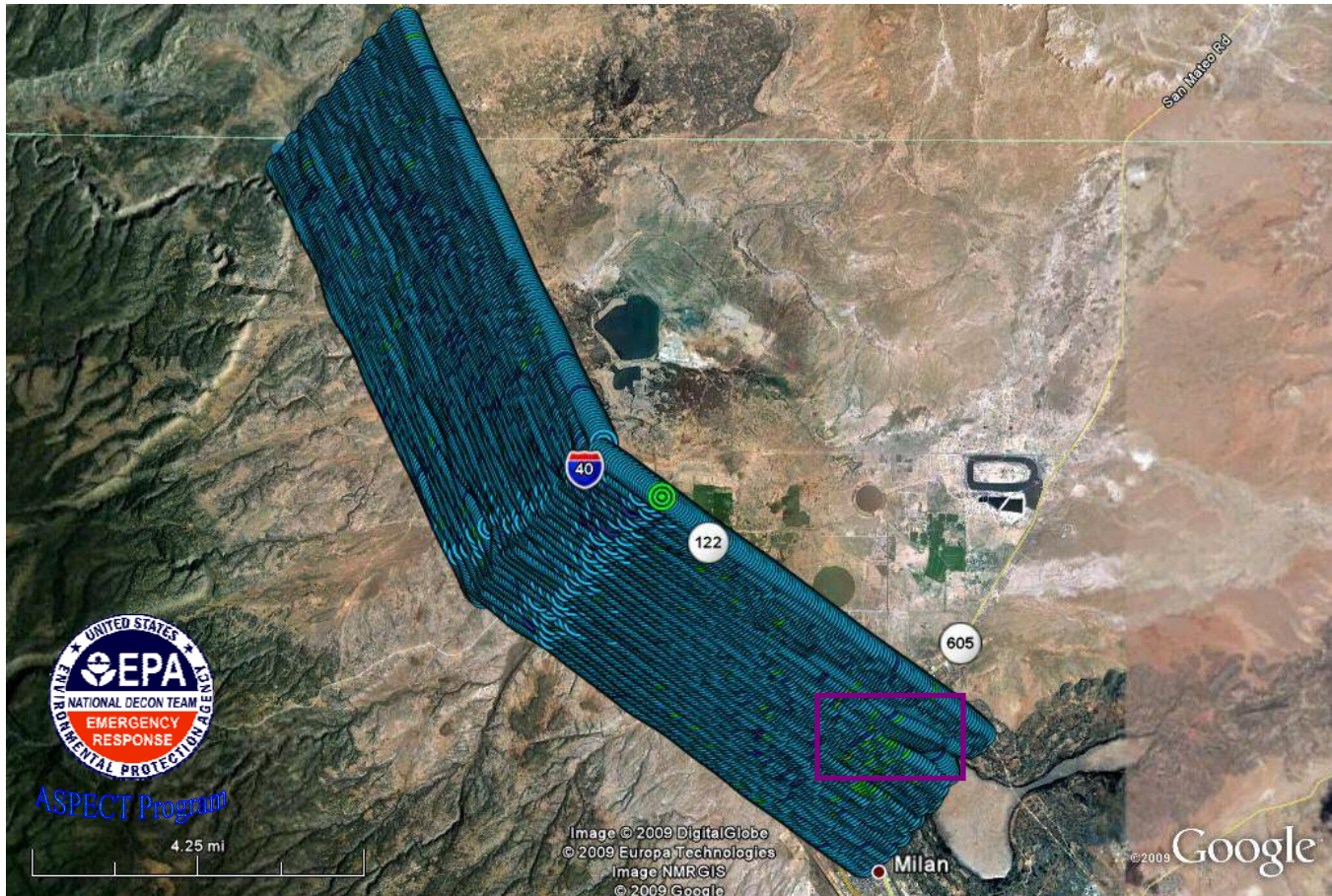
Uranium concentrations are in pCi/g

The colors were selected to maximize the variation within the data for illustration purposes only.

**This image should not be used independently to assess potential health risks.
Additional information is necessary to make appropriate health-related decisions.**

Image 49

**Grants Area
Grants Area North & Central Portions Survey
Sigma Plot Overlay onto
Uranium Concentration Contour Map
October 10, 2009**



Uranium concentrations are in pCi/g



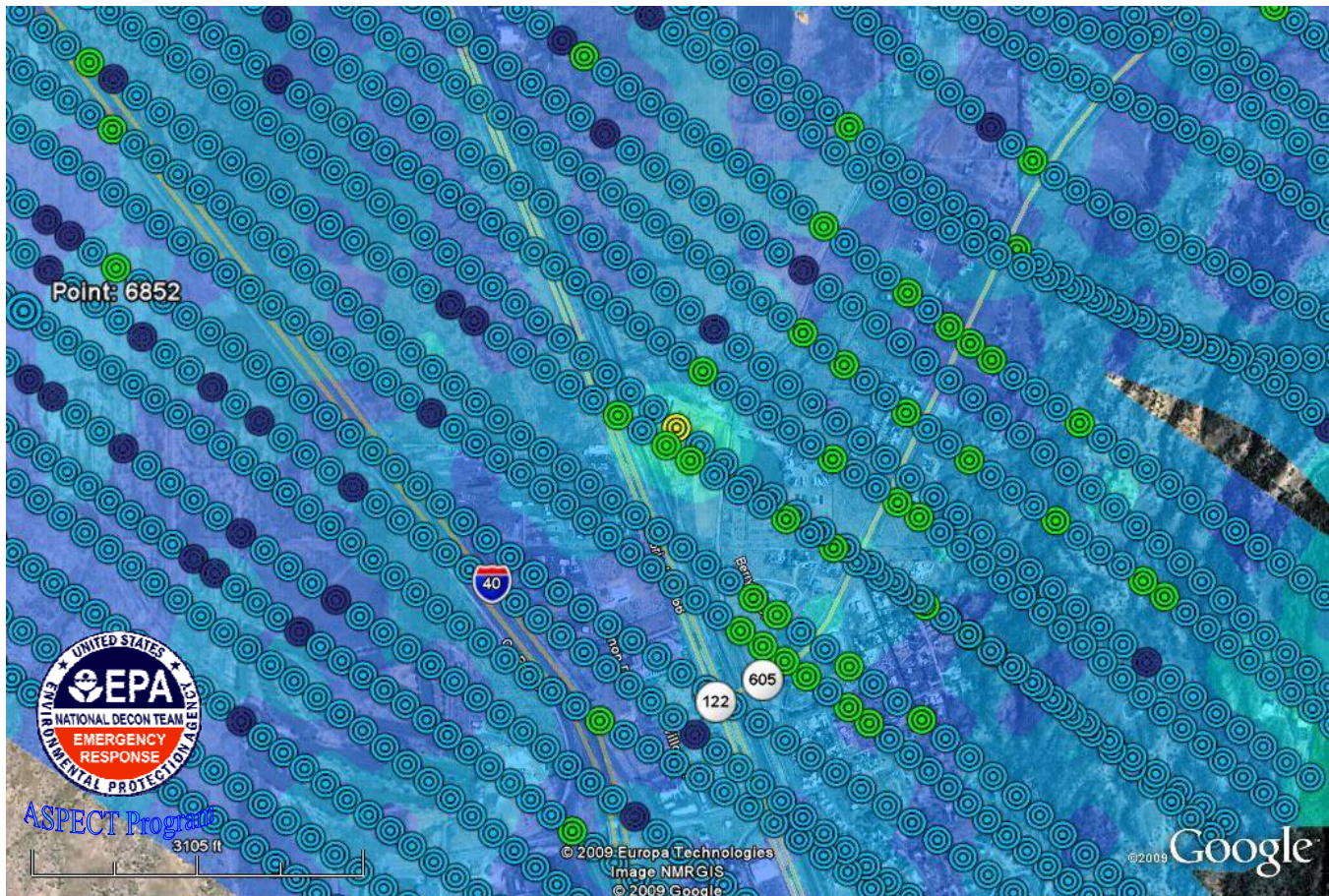
Indicates the enlarged area for the subsequent map

The colors were selected to maximize the variation within the data for illustration purposes only.

**This image should not be used independently to assess potential health risks.
Additional information is necessary to make appropriate health-related decisions.**

Image 50

**Grants Area
Grants Area Central Portion Survey
Sigma Plot Overlay onto
Uranium Concentration Contour Map
October 10, 2009**



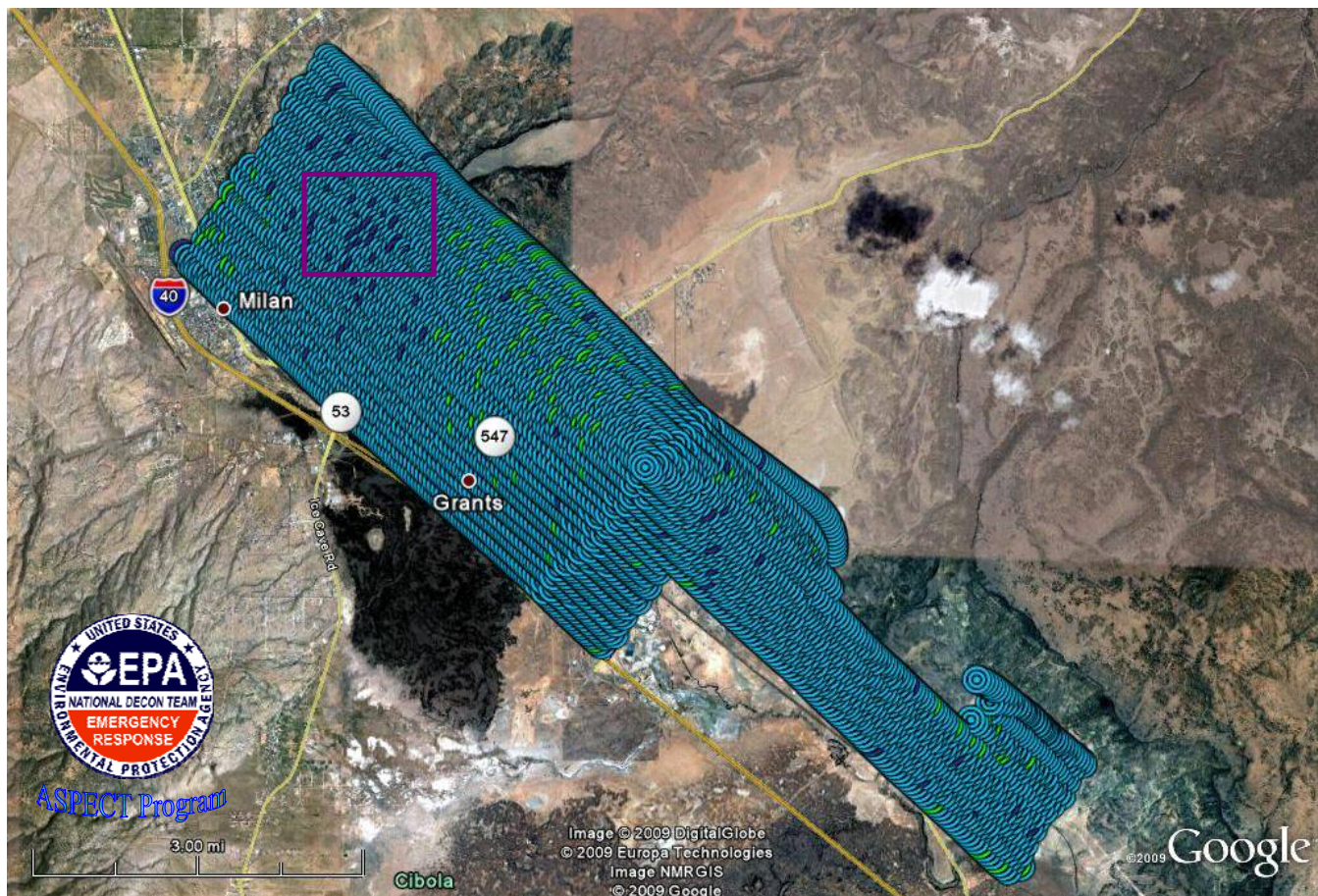
Uranium concentrations are in pCi/g.

The colors were selected to maximize the variation within the data for illustration purposes only.

This image should not be used independently to assess potential health risks. Additional information is necessary to make appropriate health-related decisions.

Image 51

**Grants Area
Grants Area Southern Portion Survey
Sigma Plot Overlay onto
Uranium Concentration Contour Map
October 9, 2009**



Uranium concentrations are in pCi/g



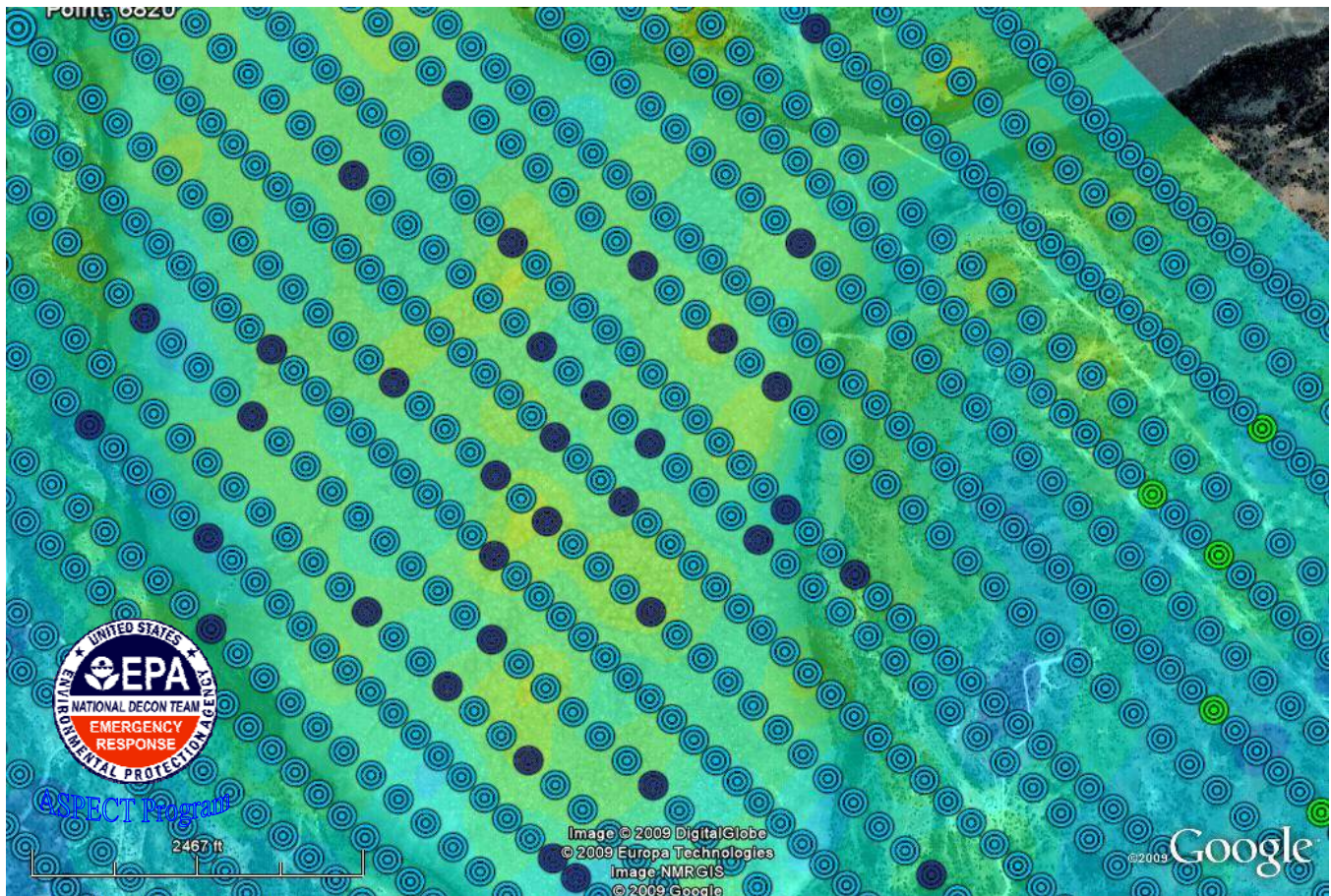
Indicates the enlarged area for the subsequent map

The colors were selected to maximize the variation within the data for illustration purposes only.

**This image should not be used independently to assess potential health risks.
Additional information is necessary to make appropriate health-related decisions.**

Image 52

**Grants Area
Grants Area Southern Portion Survey
Sigma Plot Overlay onto
Uranium Concentration Contour Map
October 9, 2009**



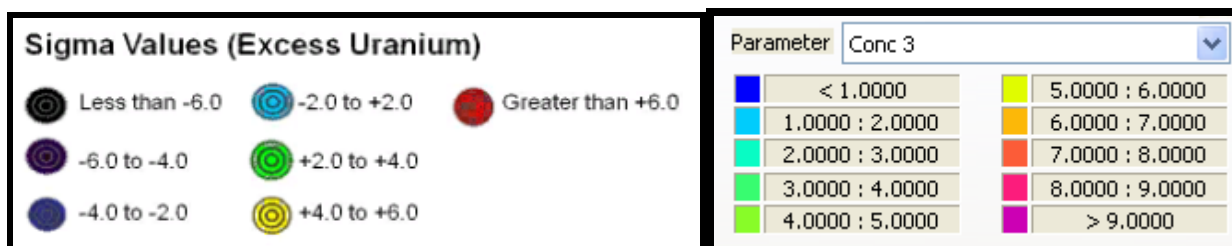
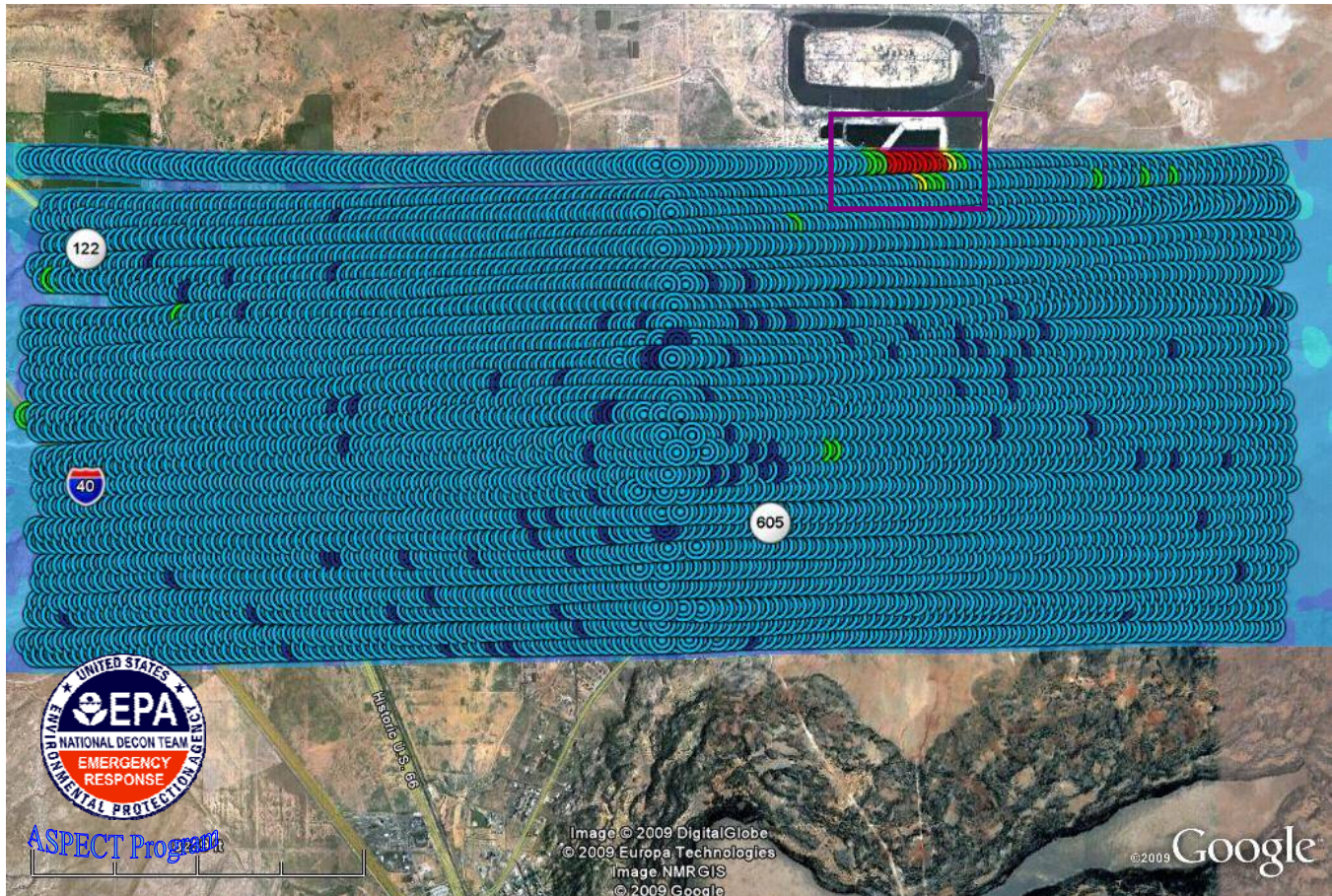
Uranium concentrations are in pCi/g.

The colors were selected to maximize the variation within the data for illustration purposes only.

This image should not be used independently to assess potential health risks. Additional information is necessary to make appropriate health-related decisions.

Image 53

**Grants Area
Grants East Area Survey
Sigma Plot Overlay onto
Uranium Concentration Contour Map
October 8, 2009**



Uranium concentrations are in pCi/g.



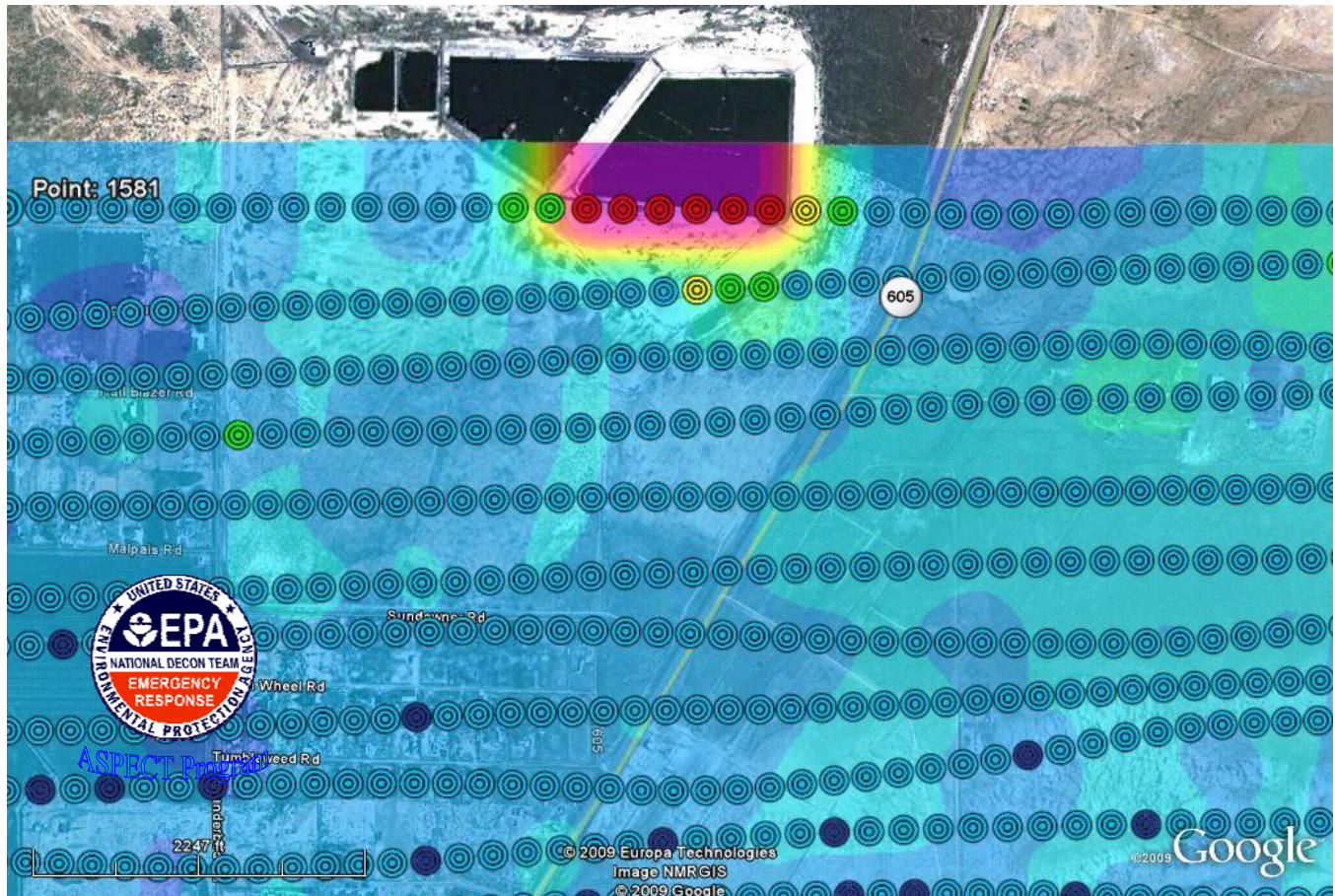
Indicates the enlarged area for the subsequent map

The colors were selected to maximize the variation within the data for illustration purposes only.

**This image should not be used independently to assess potential health risks.
Additional information is necessary to make appropriate health-related decisions.**

Image 54

**Grants Area
Grants East Area Survey
Sigma Plot Overlay onto
Uranium Concentration Contour Map
October 8, 2009**



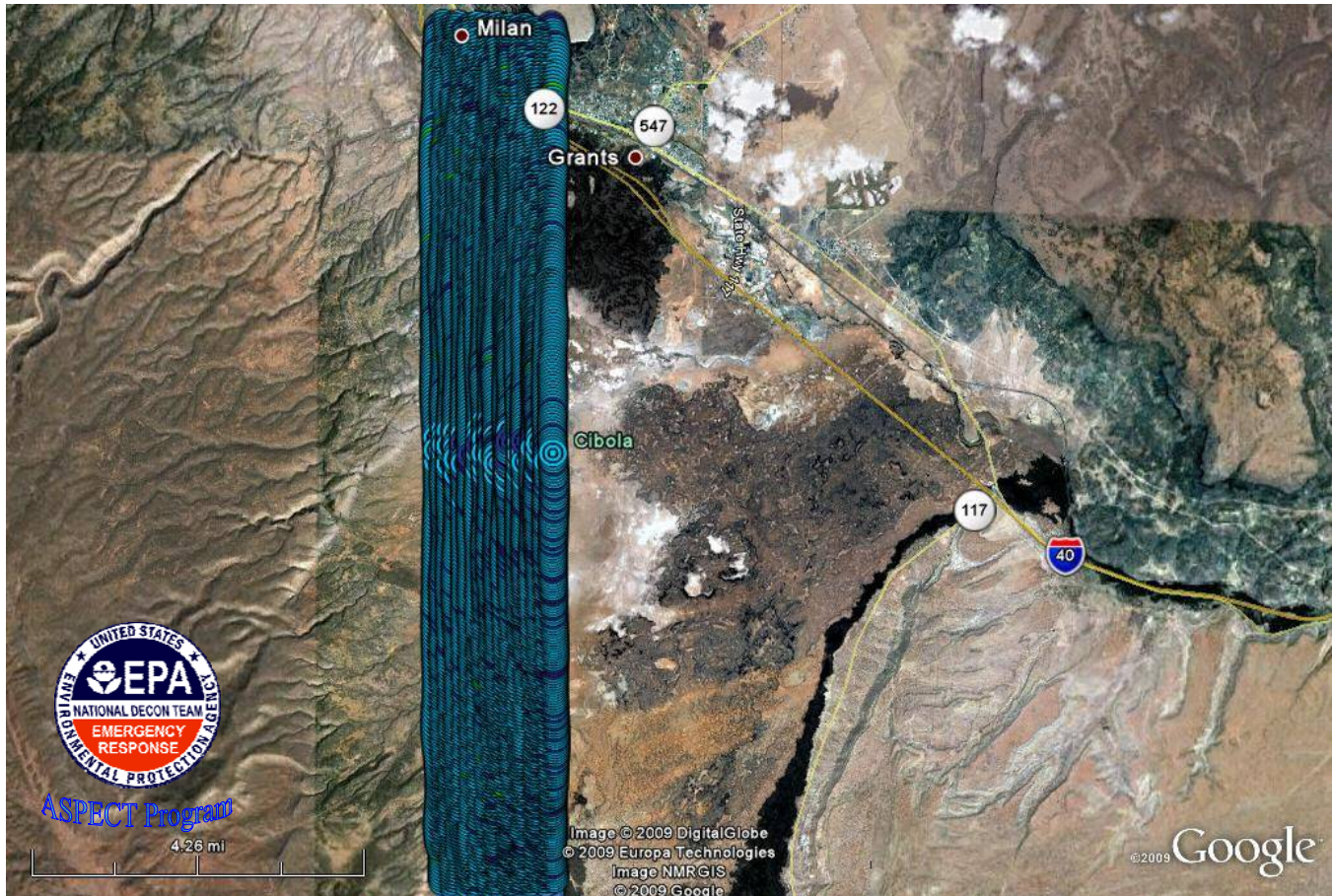
Uranium concentrations are in pCi/g.

The colors were selected to maximize the variation within the data for illustration purposes only.

This image should not be used independently to assess potential health risks. Additional information is necessary to make appropriate health-related decisions.

Image 55

**Grants Area
Grants Area Southernmost Portion Survey
Sigma Plot Overlay onto
Uranium Concentration Contour Map
October 12, 2009**



Uranium concentrations are in pCi/g

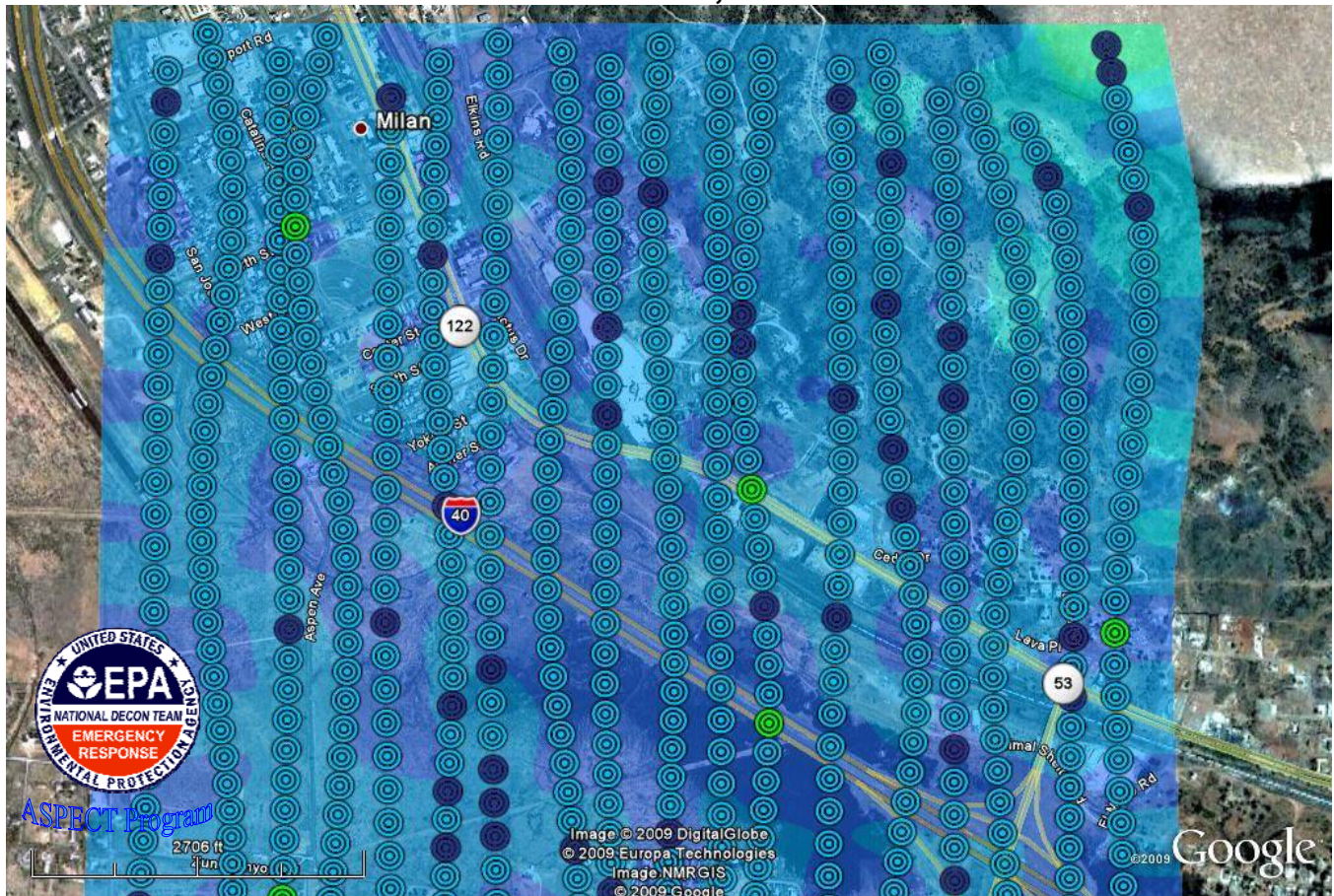


Indicates the enlarged area for the subsequent map

The colors were selected to maximize the variation within the data for illustration purposes only.

**This image should not be used independently to assess potential health risks.
Additional information is necessary to make appropriate health-related decisions.**

**Grants Area
Grants Area Southernmost Portion Survey
Sigma Plot Overlay onto
Uranium Concentration Contour Map
October 12, 2009**

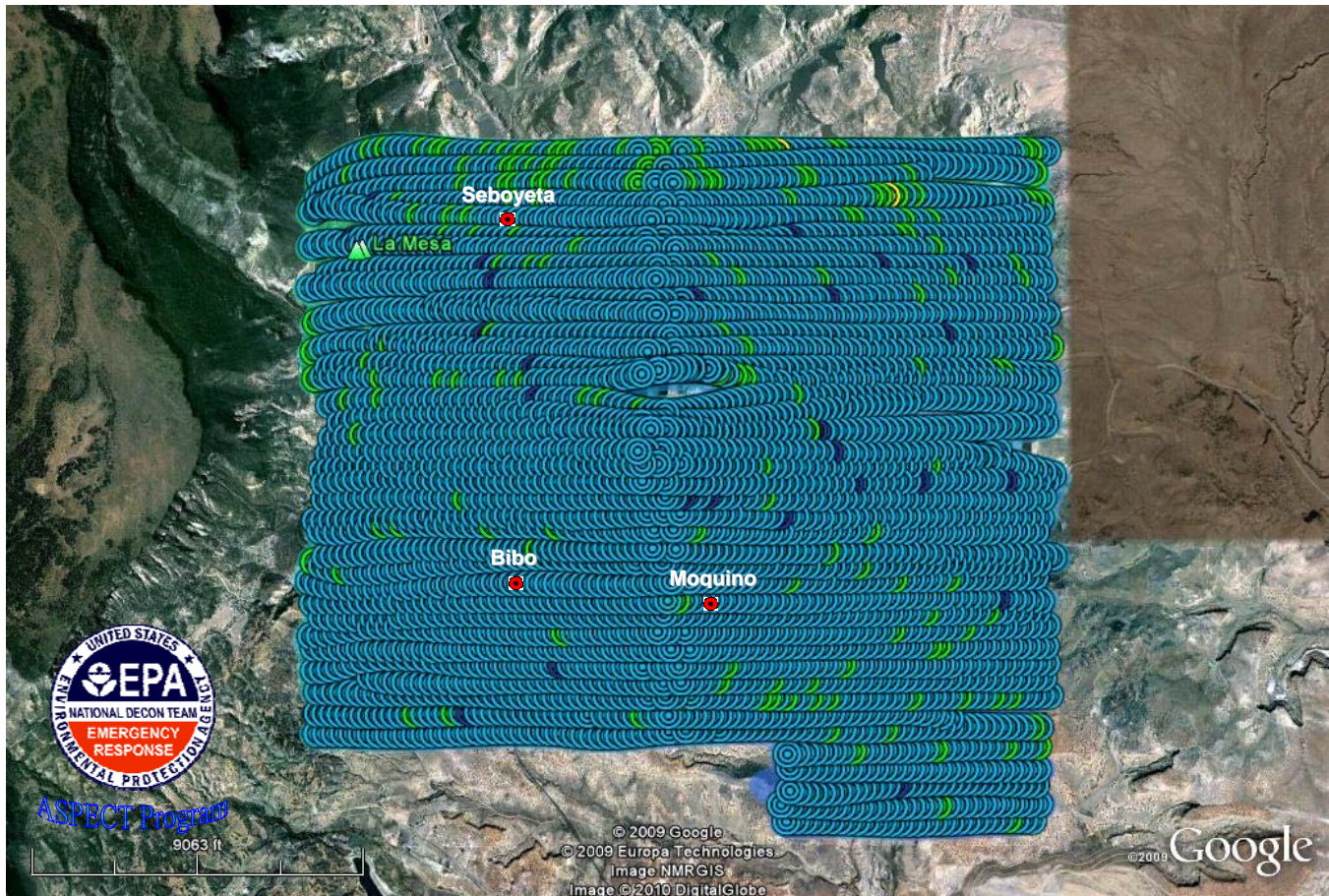


The colors were selected to maximize the variation within the data for illustration purposes only.

This image should not be used independently to assess potential health risks. Additional information is necessary to make appropriate health-related decisions.

Image 61

**Cebolleta Land Grant Area Survey
Sigma Plot Overlay onto
Uranium Concentration Contour Map
October 15, 2009**



Uranium concentrations are in pCi/g.

The colors were selected to maximize the variation within the data for illustration purposes only.

**This image should not be used independently to assess potential health risks.
Additional information is necessary to make appropriate health-related decisions.**