



Aerial photo of the historic stormwater pathway.

Soil Sampling in Your Neighborhood 2022

- EPA continues to clean up contamination from the former Montrose Plant (located at 20201 Normandie Avenue in Torrance, Calif.). The plant is part of the bigger Montrose Chemical Superfund site.
- As part of this cleanup, Montrose contractors, under EPA oversight, will test the soil in a historic stormwater pathway called the Southern Pathway.
- The soil testing will require collecting a small amount of soil from properties. (*Page 3 shows the sampling process and properties we would like to sample.*)
- Montrose's contractors (under EPA oversight) will test the soil at your property. Before the testing starts, EPA and Montrose will walk you through the sampling process in-person at your property.

Why are we testing here?

Historically the Southern Pathway flowed beneath this neighborhood and is where any contamination from the former Montrose Plant would be located.

You knew about this for 40 years. Why are you only doing this work now?

Until now, EPA has focused work on the parts of the Montrose Superfund site with the highest risk to human health and the environment. We believe potential health risks in this neighborhood are relatively low given its distance from the former Montrose Plant and that it was covered with approximately 10 to 30 feet of dirt in the 1960s.

What chemicals are you looking for?

Under EPA's oversight, Montrose will test the soil in the neighborhood for DDT and other pesticides. We will also look for chemicals called Volatile Organic Compounds (like benzene hexachloride and chlorobenzenes), polychlorinated biphenyls, and petroleum hydrocarbons.



What do I need to do get the soil on my property tested?

Sign an access agreement to allow EPA and Montrose to collect soil samples from your yard. **This sampling is free to you.**

How is the sample taken?

Please see the illustration on page 3 for a step-by-step description.

Who is paying for the sampling?

Sampling is free, and participation is voluntary. To protect your personal information, we will not share results from your property in public reports.

Tentative Schedule

Outreach

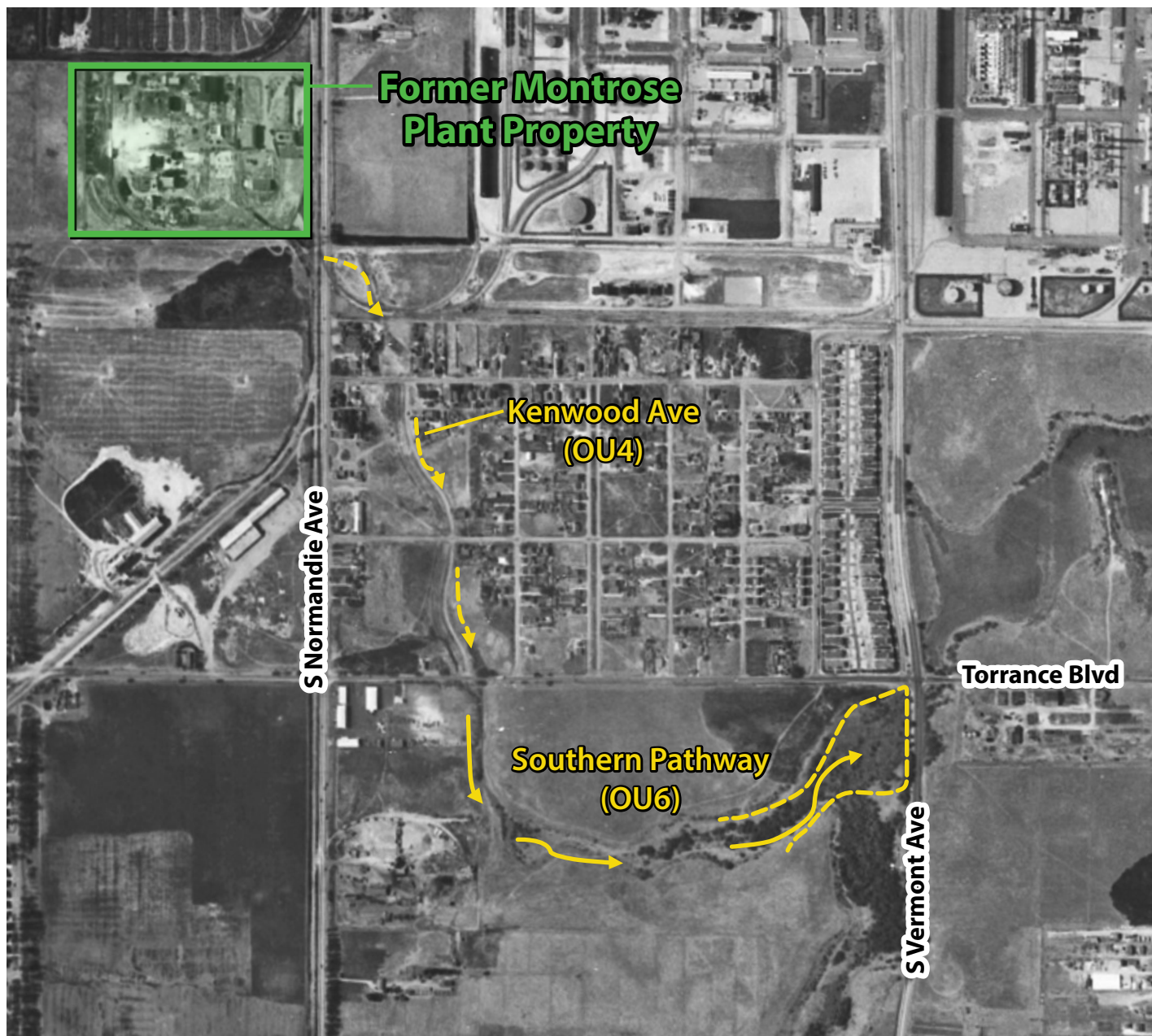
Spring 2022

Sampling

Summer 2022

Glossary Definition

Southern Historic Stormwater Pathway: This area had ravines and marshy areas that were often around 10 to 30 feet deep. This pathway was replaced by modern stormwater infrastructure in the 1960s and 1970s, and the pathway was buried with dirt.



Historical aerial view of the Historic Stormwater Pathway.

For more information

To learn more or ask questions, visit the webpage to learn more: go.usa.gov/xeqXV or contact:

EPA Community Involvement Coordinator

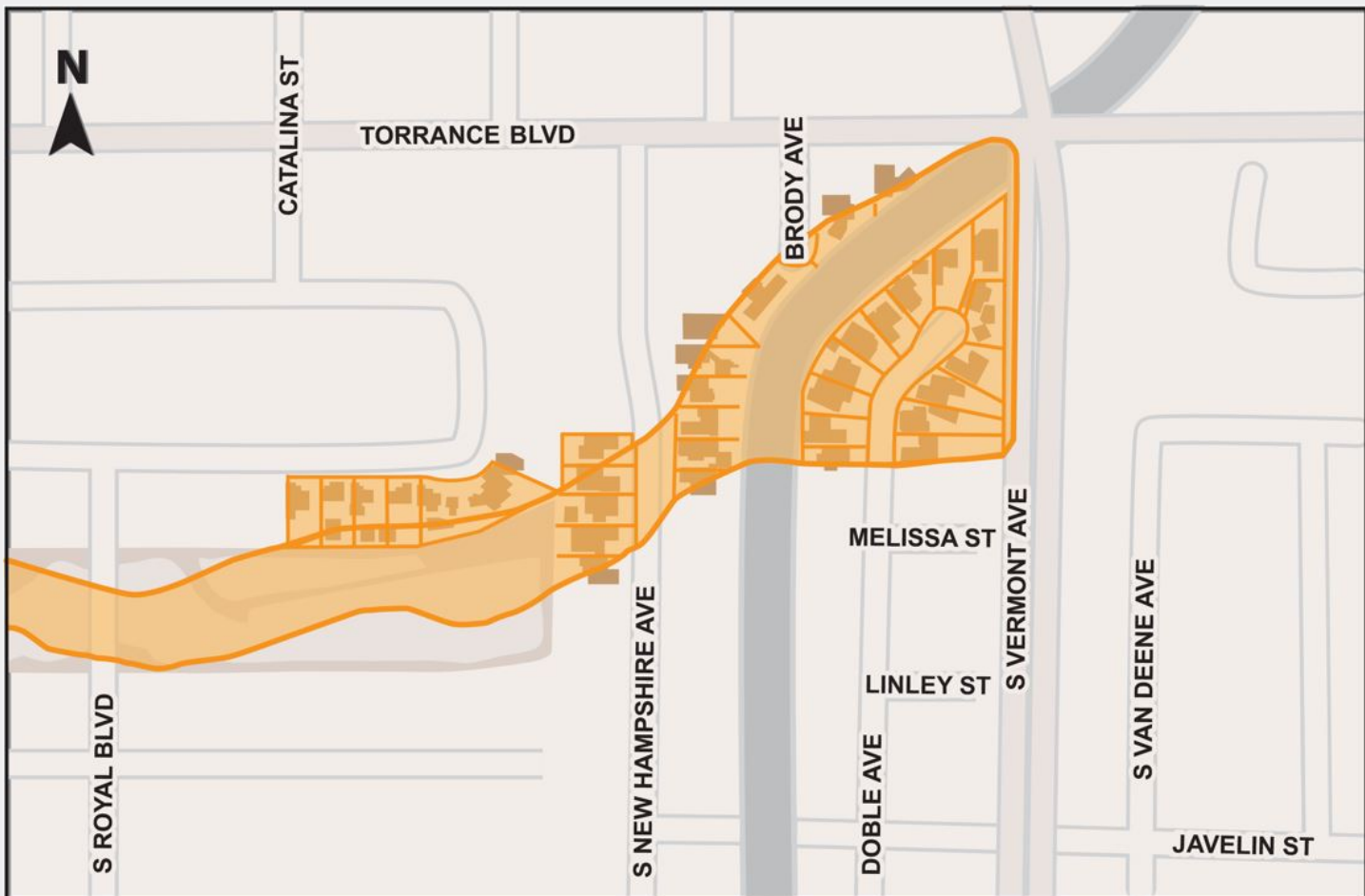
Romie Duarte

(213) 244 – 1801

duarte.romie@epa.gov



No sampling will happen on your property unless we get your permission, so please sign up today!

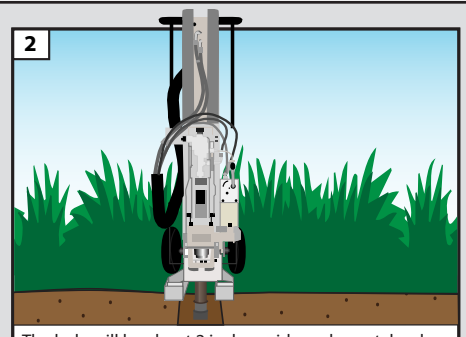


This map shows the properties within the soil sampling area that will be tested.

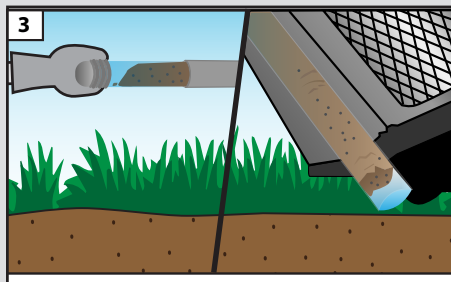
How Does Soil Sampling Work?



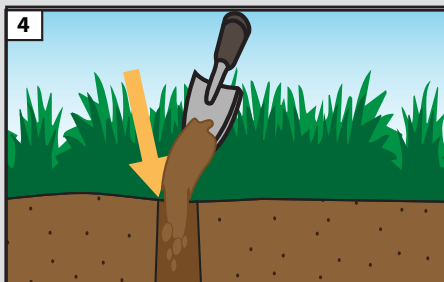
1
Montrose contractors, under EPA oversight, will make a hole in an area of your yard.



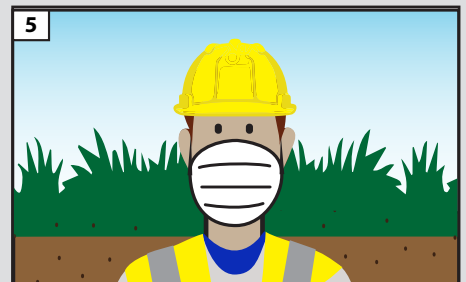
2
The hole will be about 2 inches wide and a metal rod with an empty plastic tube inside will be pushed down about 10 - 30 feet.



3
The soil will then be captured inside the plastic tube (see pic 2) and then brought back to the surface. The plastic tube will then be cut open and a soil sample will then be sent to a laboratory to be tested.



4
The small hole where the soil sample was taken will be sealed and filled with clean soil. If you had grass before, the grass will be replaced.



5
The sampling work will take less than a day and follow all COVID-19 safety protocols to protect people's health.