

Appendix O

Mine Workings and Sanborn Fire Insurance Maps

Appendix O

Mine Workings and Sanborn Fire Insurance Maps

This appendix includes supplemental information to support the site history and site feature descriptions, including plates of the Iron King Mine workings and Sanborn Fire Insurance Maps.

Contents

Mine Working Plates

The following two plates showing the Iron King Mine workings are included in Appendix O courtesy of the U.S. Geological Society (USGS). These plates are associated with the 1958 Professional Paper 308 titled “Geology and Ore Deposits of the Jerome Area, Yavapai County, AZ” (USGS, 1958). The full publication is available online at <https://pubs.er.usgs.gov/publication/pp308>.

- Plate 11: Geological Map of Surface of Iron King Mine, Yavapai County, Arizona
- Plate 12: Map of some of the Underground Workings and Sections, Iron King Mine, Yavapai County, Arizona

Sanborn Fire Insurance Maps

The following Sanborn Fire Insurance Maps are included in Appendix O and were obtained from the U.S. Environmental Protection Agency. Sanborn Fire Insurance Maps are also embedded in the Archaeological Consulting Services (ACS) *Cultural Resource and Historic Building Survey* (ACS, 2008) included in Appendix B of the Remedial Investigation (RI) Report.

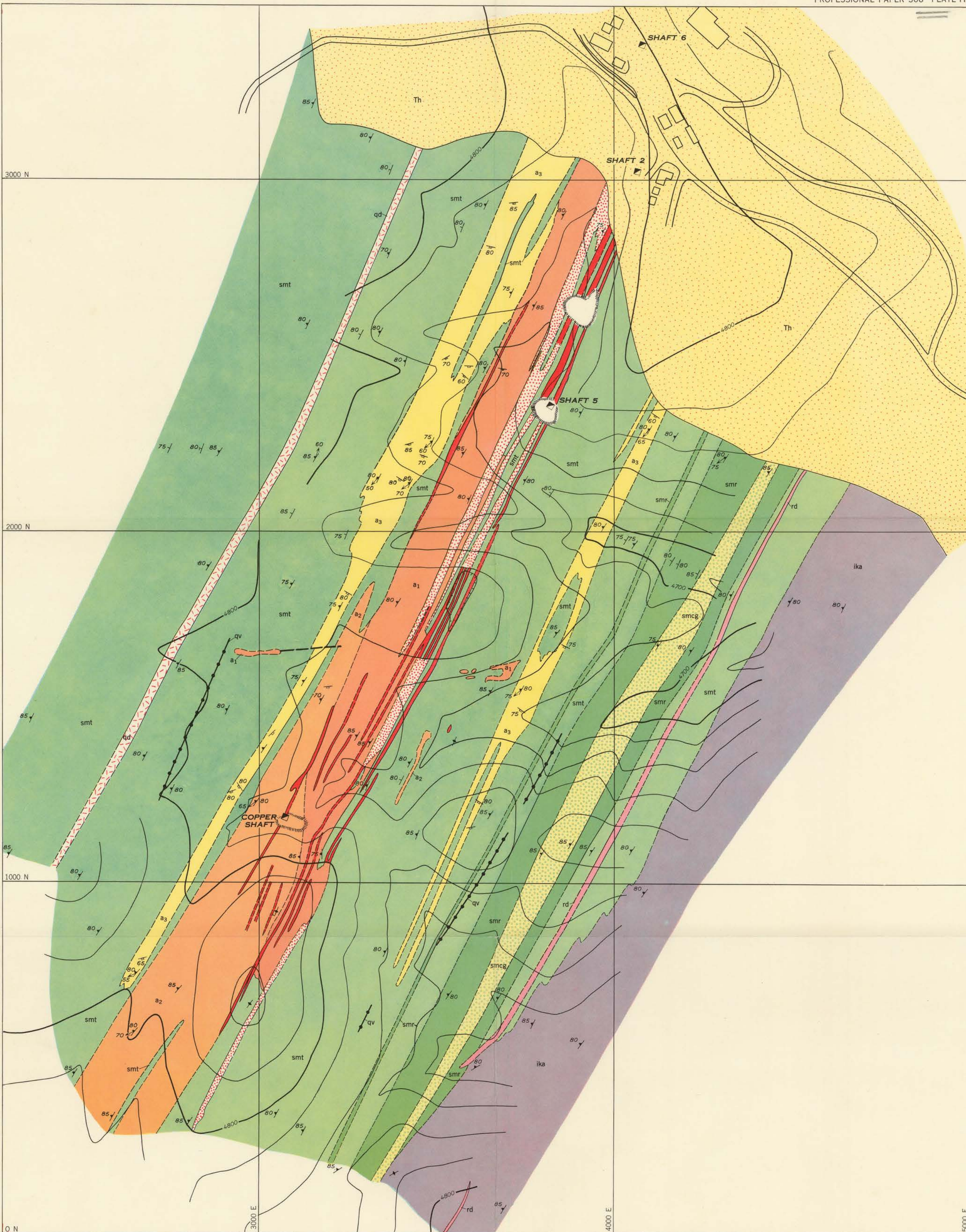
- Sanborn Fire Insurance Map (undated) titled “Map of Arizona Smelting Company Plant” and showing the “Agua Fria Mill Site”
- Sanborn Fire Insurance Map from 1917 of Humboldt, Arizona depicting the Consolidated Arizona Smelting Company industrial area (also included as Figure 25 in ACS, 2008)
- Sanborn Fire Insurance Map from 1931 of Humboldt, Arizona

Works Cited

Archaeological Consulting Services (ACS), LTD. 2008. *A Cultural Resource and Historic Building Survey for a Remedial Investigation/Feasibility Study at the Iron King Mine-Humboldt Smelter Superfund Site, Dewey-Humboldt, Yavapai County, Arizona*. November 10.

U.S. Geological Survey (USGS). C.A. Anderson and S.C. Creasey. 1958. “Geology and Ore Deposits of the Jerome Area, Yavapai County, AZ.” Professional Paper 308. US Government Printing Office.

(200)
9B



- EXPLANATION
- Th Hickey formation
 - rd Rhyolite dike
 - qd Foliated quartz diorite
 - ika Iron King volcanics
Amygdaloidal basaltic flows
 - smr Spud Mountain volcanics
Rhyolitic tuffaceous unit, smr; conglomeratic unit, smcg; andesitic tuffaceous unit, smt
 - smcg
 - smt
 - qv Quartz or jasper vein
 - Vein
Contains gossan after sulfide minerals
 - Zone of veins
Consists of two or more veins separated by altered andesite tuff. Veins contain gossan after sulfide minerals
 - a1 Most intense hydrothermal alteration; introduced quartz, pyrite, ankerite, and sericite
 - a2 Moderately intense hydrothermal alteration; introduced quartz, pyrite, ankerite, and sericite
 - a3 Least intense hydrothermal alteration; introduced sericite most pronounced; some introduced quartz and ankerite
 - Contact, dashed where approximately located
 - Fault, approximately located
 - Strike and dip of beds
 - Strike and dip of foliation and plunge of lineation
 - Strike of vertical foliation
 - Strike and dip of fracture cleavage
 - Shaft
 - Opencut
 - Dump

Topography modified from map
by Charles S. Bacon Jr.

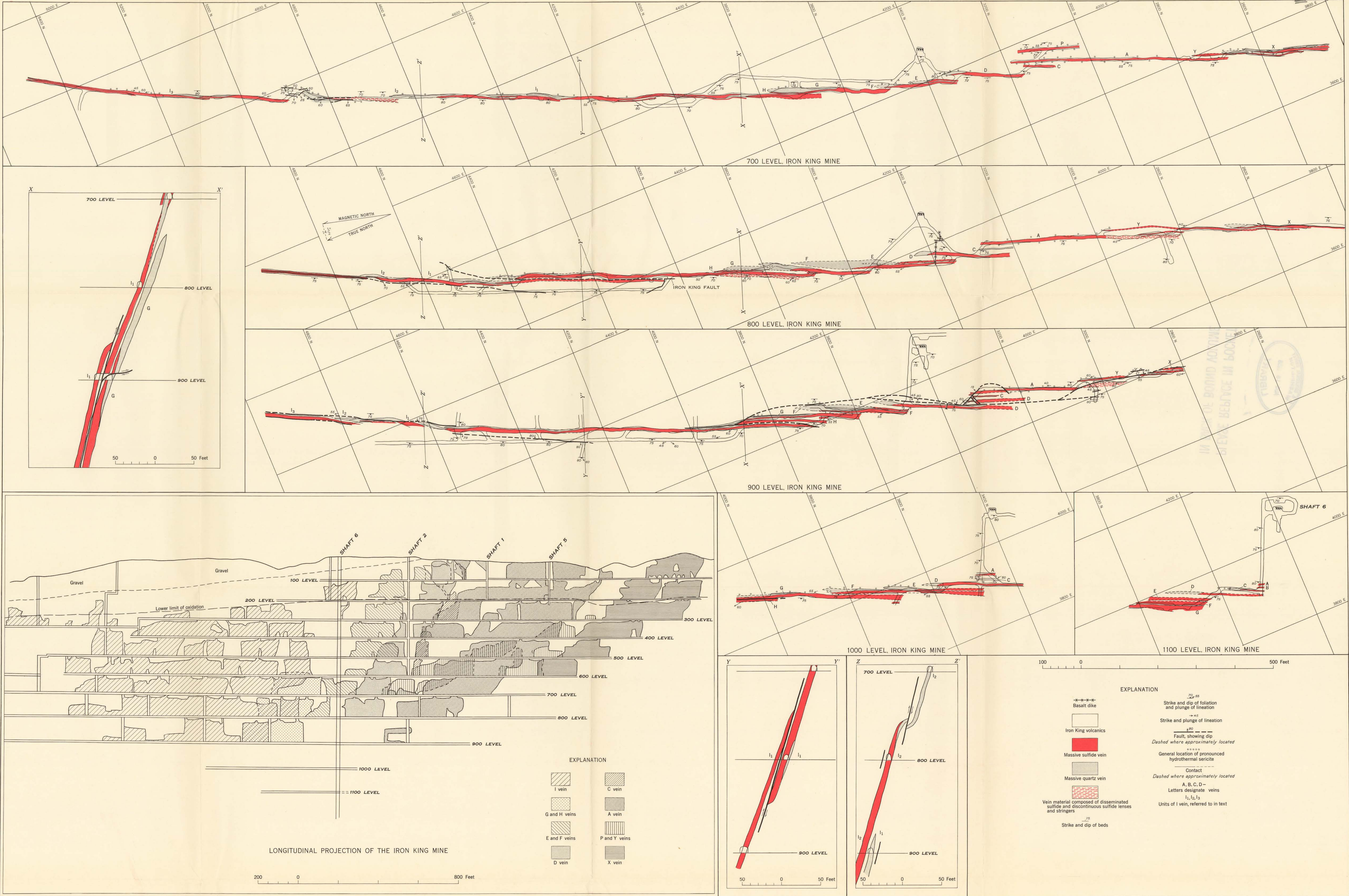
INTERIOR—GEOLOGICAL SURVEY, WASHINGTON, D. C.
M-10449

Geology by S. C. Creasey

GEOLOGIC MAP OF SURFACE OF IRON KING MINE, YAVAPAI COUNTY, ARIZONA

200 0 800 Feet
Contour interval 20 feet
Datum is mean sea level

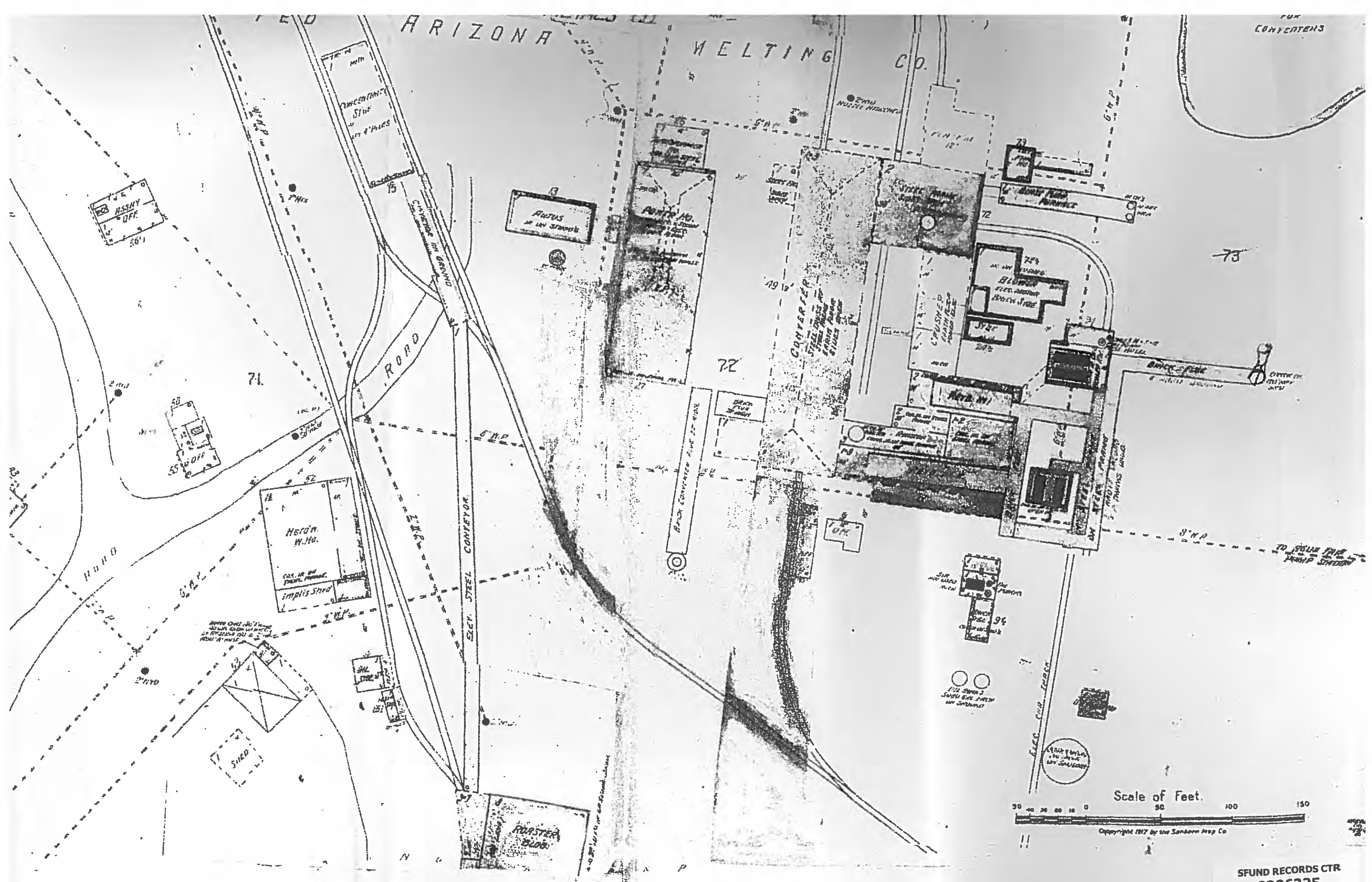
U.S. GEOLOGICAL SURVEY
WASHINGTON
AUG 18 1958
LIBRARY
PLEASE REPLACE IN POCKET
IN BACK OF BOUND VOLUME

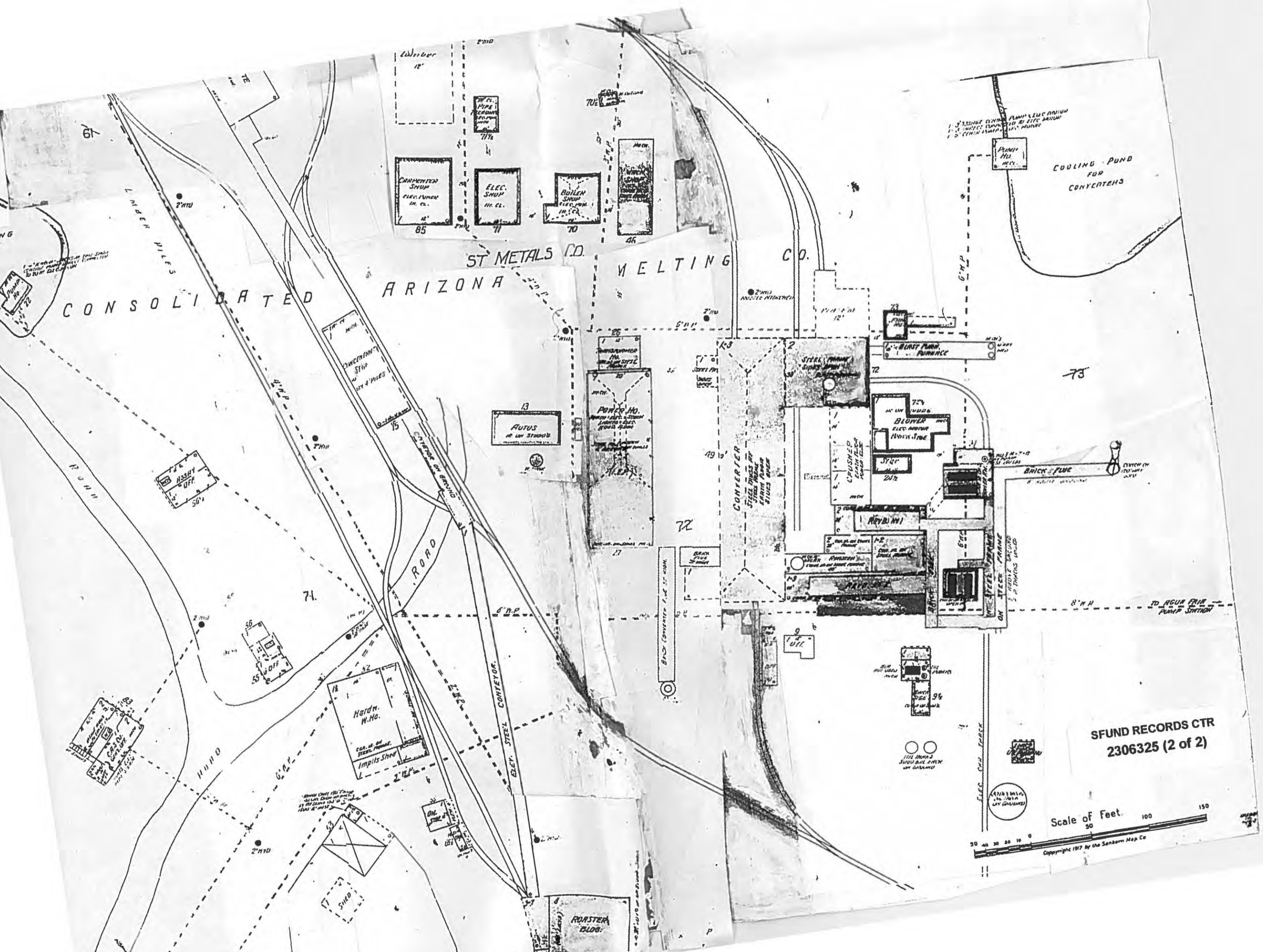


MAP OF SOME OF THE UNDERGROUND WORKINGS AND SECTIONS, IRON KING MINE, YAVAPAI COUNTY, ARIZONA

**PARTIALLY SCANNED
OVERSIZE ITEM(S)**

To use oversize document # 2306325
contact the Region IX Superfund Records Center





POOR LEGIBILITY

ONE OR MORE PAGES IN THIS DOCUMENT ARE DIFFICULT TO READ
DUE TO THE QUALITY OF THE ORIGINAL

4-6/31- M. Q. - 12/21/46



HUMBOLDT COUNTY, CALIF.
 SANBORN MAP
 POPULATION 900
 PREVAILING WINDS
 WATER FACILITIES
 FIRE DEPARTMENT
 HUMBOLDT
 YAVAPAI
 ARIZ.
 SEPTEMBER
 1917
 11 BROADWAY
 BY THE S.A.

GREAT CARE HAS BEEN EXERCISED IN THE PRODUCTION OF OUR PUBLICATIONS AND OUR SERVICE, BUT ABSOLUTE ACCURACY IS NOT GUARANTEED

KEY:

FIRE WALL OR
METAL CORNER

FIRE WALL IN
WOOD CORNER

FIRE WALL OF
FRAME PARTIAL
OPENING WITH

" IRON
WINDOWS & DOORS

WINDOW 17 ST.

WINDOWS IN
" 2 "

[X] SIABLE (CB) - CONCRETE
BUILDINGS COLORED YELLOW

" " BLUE

" " GRAY

" " BROWN

(3) INDICATE
RELATIVE HEIGHTS

+ FIRE STATION, AS SHOWN

ALTERNATE STREET NUMBERS
CONSECUTIVE STREET NOS ARE
(P.F.) PERPENDICULAR

