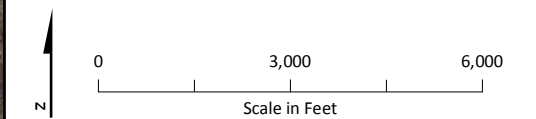




LEGEND

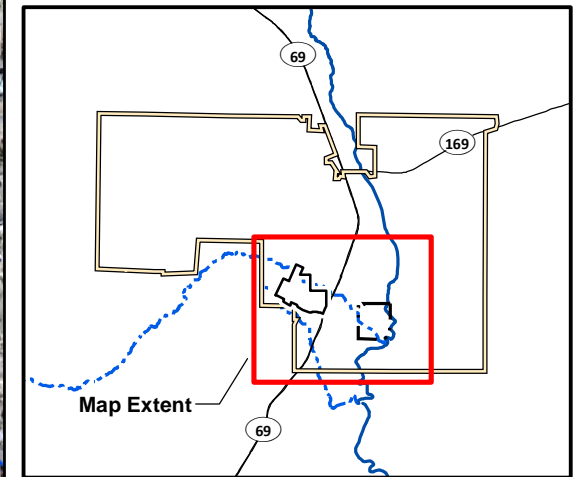
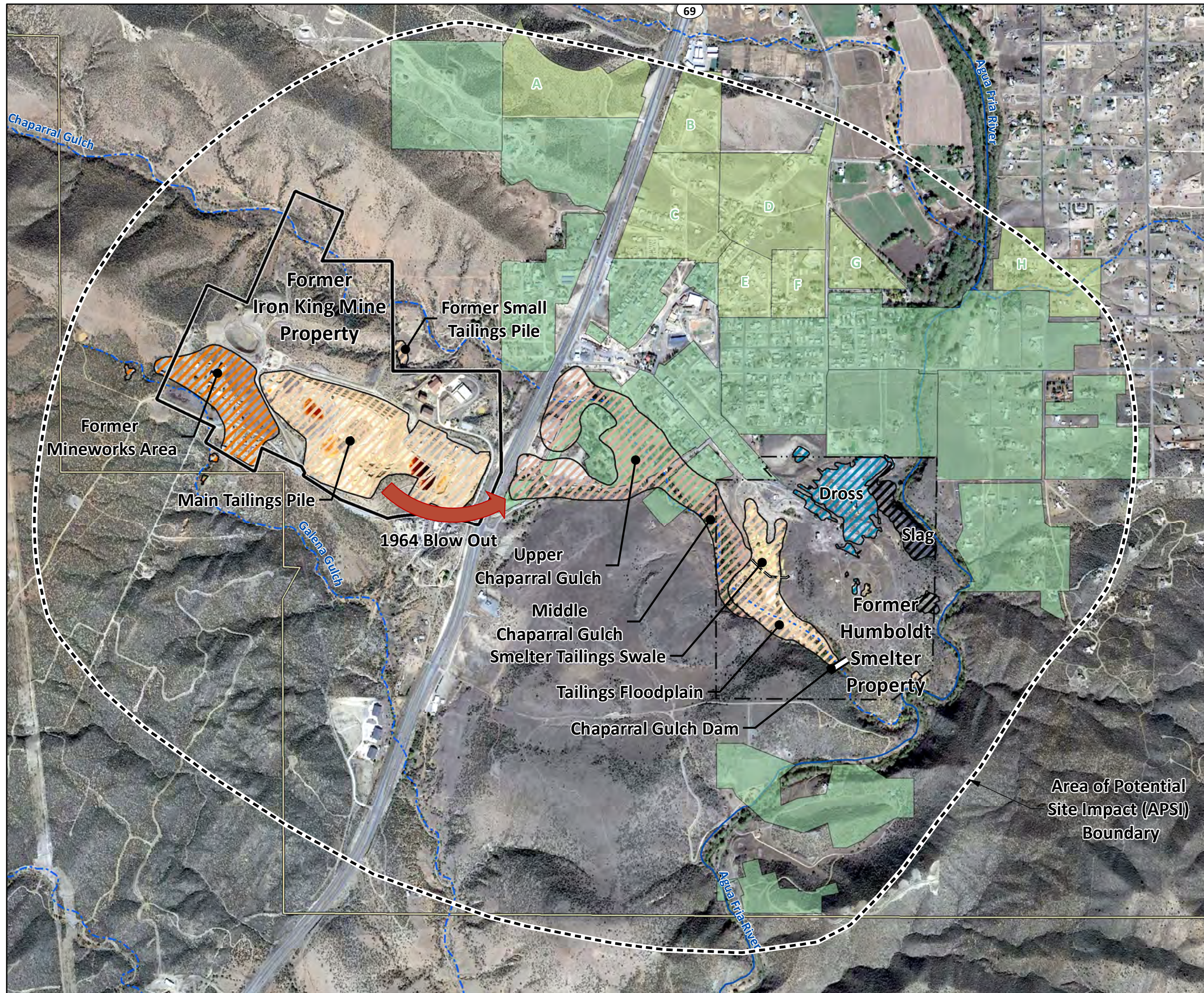
- River
- - - Intermittent Drainage
- ▭ Former Iron King Mine Property
- - - ▭ Former Humboldt Smelter Property
- ▭ Dewey-Humboldt Town Boundary
- ▨ Prescott National Forest



Notes:

The boundaries of the former Iron King Mine and former Humboldt Smelter represent property boundaries and do not directly correspond to the area of historical operations or impacts.
Image Source: USDA, 2015.

Figure ES-1
Iron King Mine, Humboldt Smelter, and Surrounding Region
*Iron King Mine – Humboldt Smelter Superfund Site
Dewey-Humboldt, Yavapai County, Arizona*



LEGEND

- River
- - - Intermittent Drainage
- Screening Area Sampling
- Yard-by-Yard Sampling
- Waste Rock
- Tailings
- Upper and Middle Chaparral Gulch Areas
- Slag Pile
- Dross Area
- Area of Potential Site Impact (APSI)
- Former Iron King Mine Property
- Former Humboldt Smelter Property
- Dewey-Humboldt Town Boundary

Notes:
 EPA removed the Small Tailings Pile in 2011 and consolidated the waste with the Main Tailings Pile (E & E, 2012).
 Image Source: Google Earth™; Image date November 6, 2015.
 Accessed April 6, 2016.

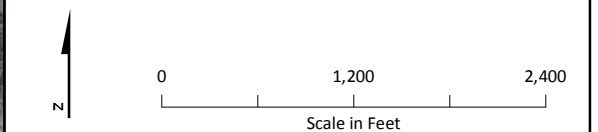
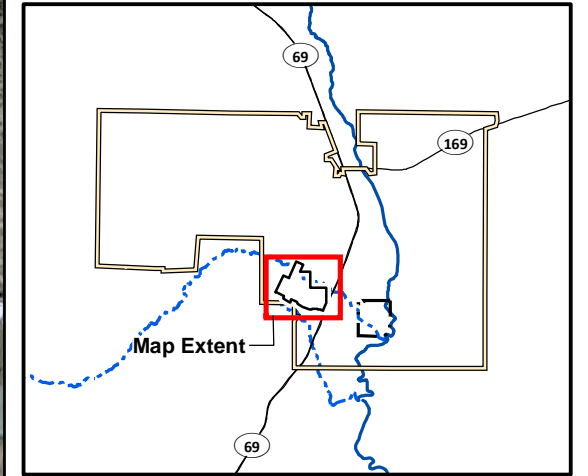
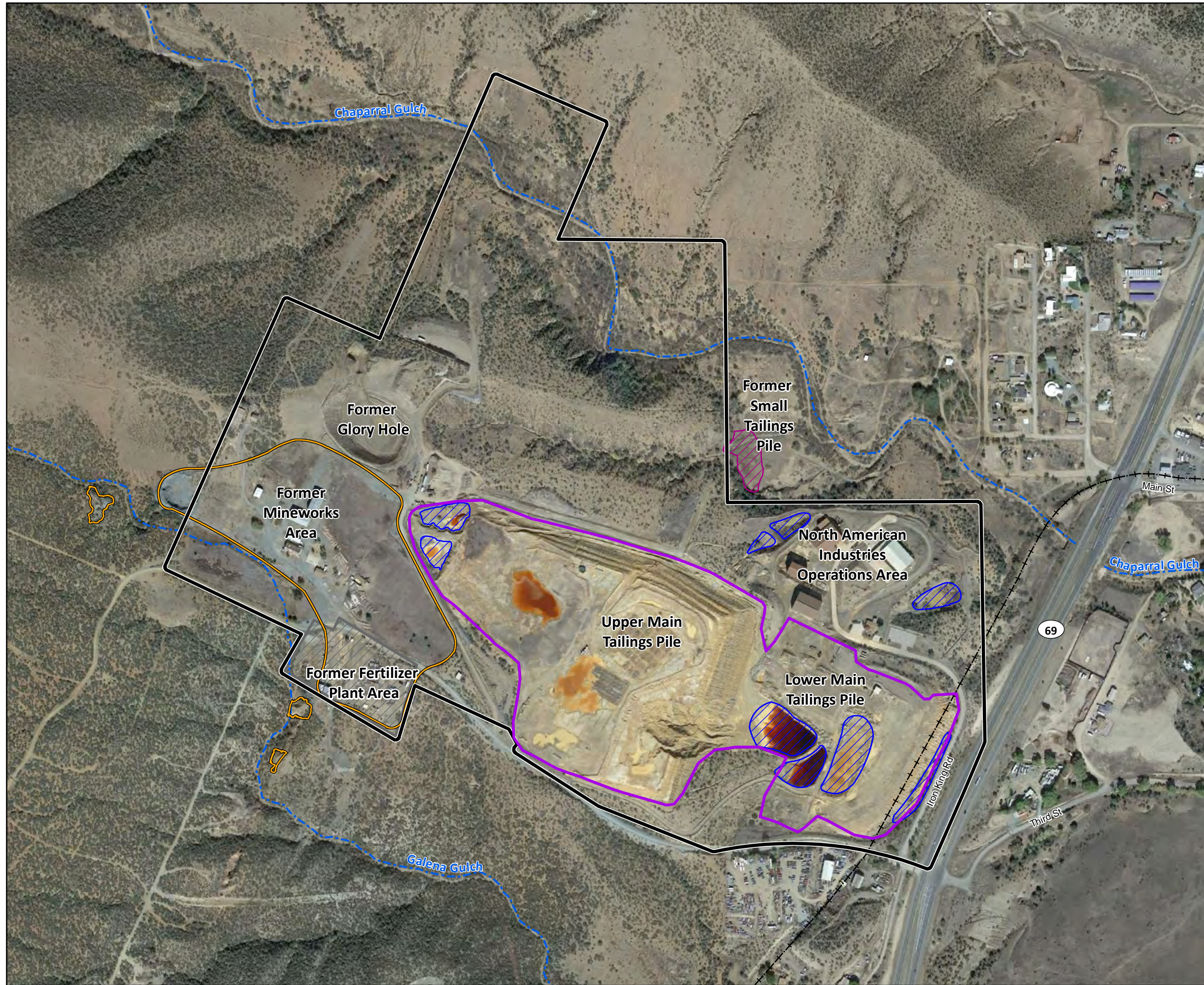


Figure ES-2
Sources of Contamination and Residential Sampling Areas
Iron King Mine – Humboldt Smelter Superfund Site
Dewey-Humboldt, Yavapai County, Arizona



LEGEND

- Historic Rail Line
- River
- - - Intermittent Drainage
- ▭ Former Iron King Mine Property
- ▭ Main Tailings Pile
- ▭ Waste Rock^a
- ▨ Former Small Tailings Pile^b
- ▨ Retention Pond
- ▨ Former Fertilizer Plant Area
- ▨ Former Humboldt Smelter Property
- ▭ Dewey-Humboldt Town Boundary

0 500 1,000
Scale in Feet

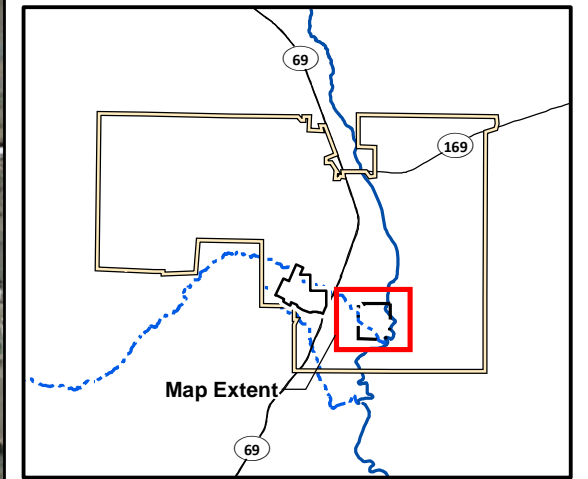
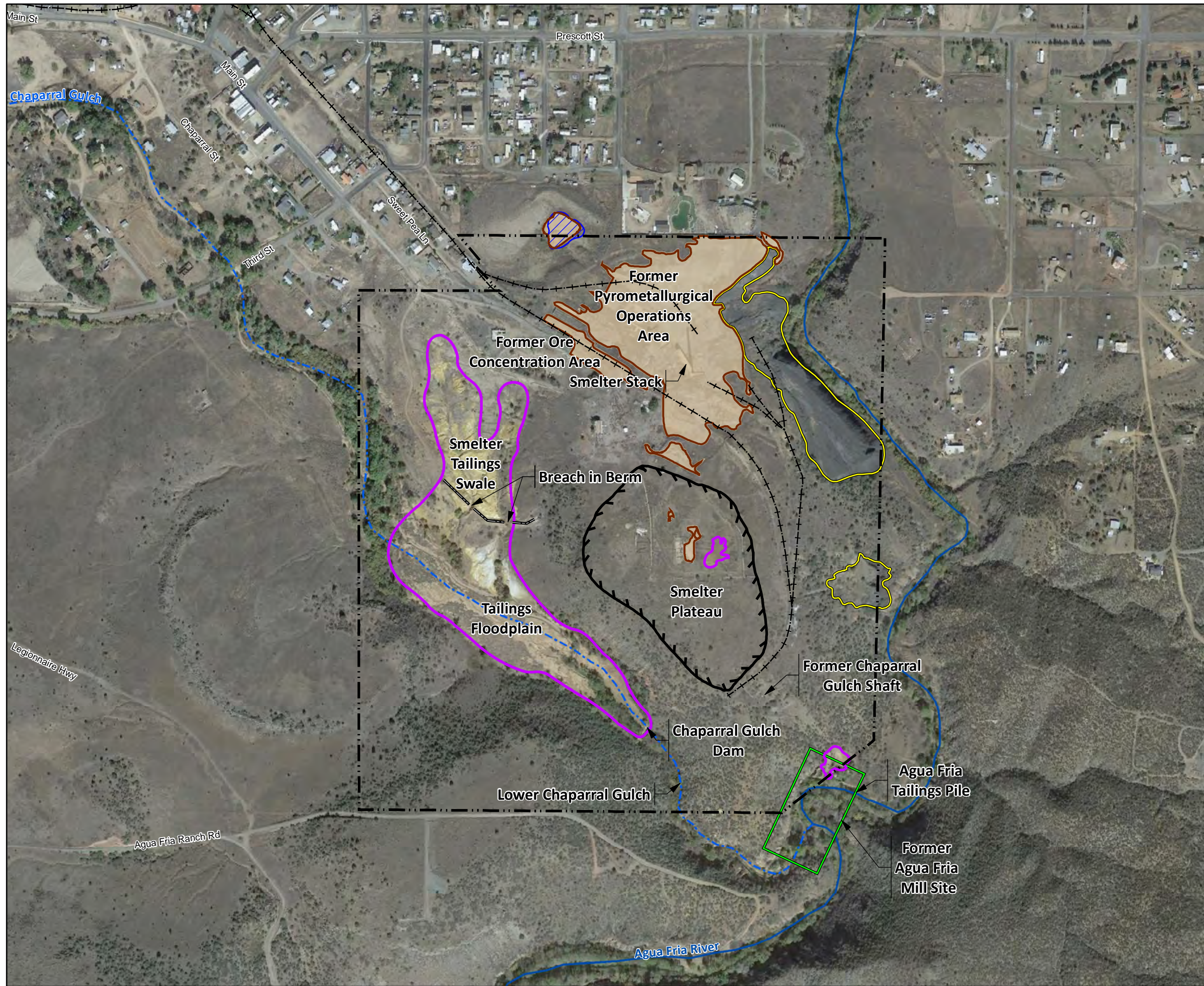
N

^aThe extent of waste rock in the former Mineworks area was obtained from EA Engineering, Science, and Technology, Inc. (EA, 2010). The extent of waste rock south and west of the former Iron King Mine property boundary was identified during the EPA/ERT investigation (Lockheed Martin SERAS, 2015).

^bThe extent of the former Small Tailings Pile was obtained from E & E, 2012. EPA removed the Small Tailings Pile in 2011 and consolidated the waste with the Main Tailings Pile (E & E, 2012).

Notes:
Image Source: Google Earth™; Image date November 6, 2015.
Accessed February 2, 2016.

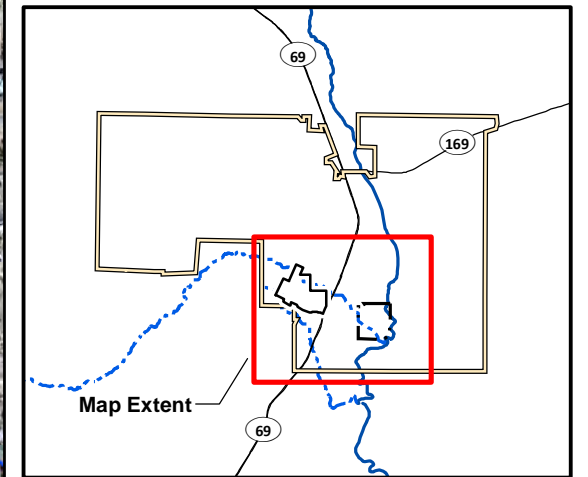
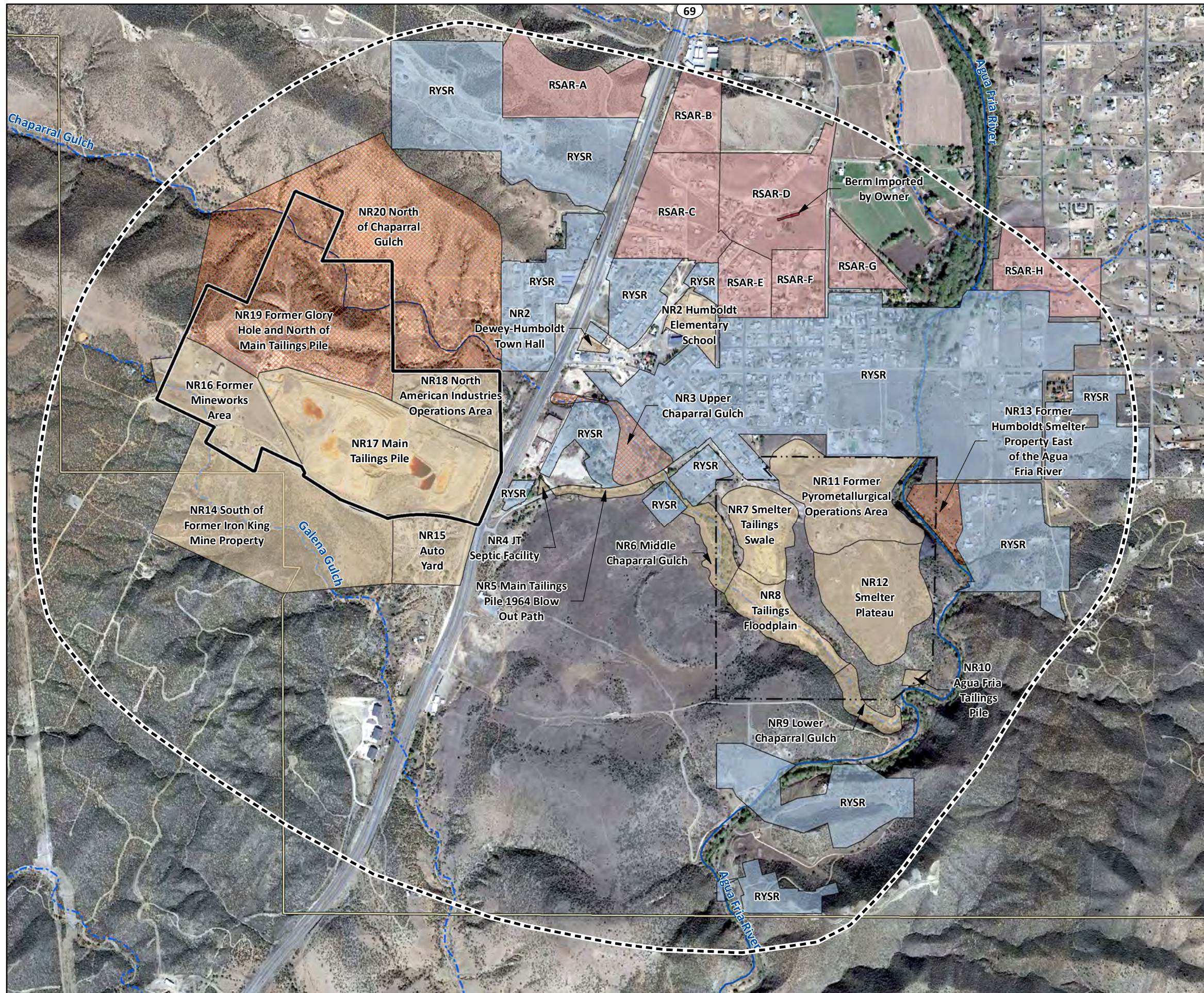
Figure ES-3
Former Iron King Mine Property – Features
*Iron King Mine – Humboldt Smelter Superfund Site
Dewey-Humboldt, Yavapai County, Arizona*



^aLocation of former Agua Fria Mill Site is approximate and derived from an undated Sanborn Company Fire Insurance Map.

Notes:
The extent of tailings was obtained from EA Engineering, Science, and Technology, Inc. (EA, 2010). The extent of dross and slag was obtained from Lockheed Martin SERAS (2015). EPA observations indicate that dross mixed with slag also extends down to the Agua Fria River in the northeastern portion of the slag pile (see Appendix A).
Image Source: Google Earth™; Image date November 6, 2015. Accessed February 2, 2016.

Figure ES-4
Former Humboldt Smelter Property – Features
*Iron King Mine – Humboldt Smelter Superfund Site
Dewey-Humboldt, Yavapai County, Arizona*



- LEGEND**
- River
 - - - Intermittent Drainage
 - Residential Screening Area Risk (RSAR)
 - Residential Yard-Specific Risk (RYSR)
 - Non-Residential
 - Non-Residential (Possible Future Residential)
 - Imported Berm
 - - - Area of Potential Site Impact (APSI)
 - ▬ Former Iron King Mine Property
 - - - Former Humboldt Smelter Property
 - ▬ Dewey-Humboldt Town Boundary

Notes:
 NR3 Upper Chaparral Gulch, designated as a non-residential (possible future residential) area, overlaps an area designated as RYSR.

Image Source: Google Earth™; Image date November 6, 2015.
 Accessed April 6, 2016.

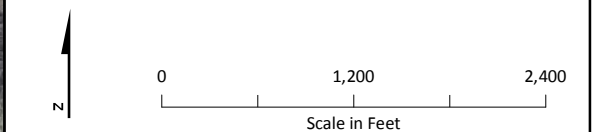


Figure ES-5
Exposure Areas
Iron King Mine – Humboldt Smelter Superfund Site
Dewey-Humboldt, Yavapai County, Arizona



LEGEND

- River or Intermittent Drainages
- Former Iron King Mine Property
- Former Humboldt Smelter Property
- Area of Potential Site Impact
- Historic Rail Line

Transport Mechanisms

- Erosion, historical operational discharges, or other releases to surface water
- Windblown particulates and aerial dispersion
- Historical spills along rail line

- Location of Cross Section A-A' (See Figure ES-7)
- Historical smelter stack emissions

Note:
Transport mechanisms not depicted on this diagram or the associated cross section include placement or dumping of waste or use of tailings, waste rock, or contaminated soil as construction fill or road base in surrounding areas.

Figure ES-6
Contaminant Transport Mechanisms
Iron King Mine – Humboldt Smelter Superfund Site
Dewey-Humboldt, Yavapai County, Arizona

