

- LEGEND**
- River
 - - - Intermittent Drainage
 - + - Historic Rail Line
 - - - Area of Potential Site Impact (APSI)
 - - - Background Boundary (CH2M, 2015)
 - Former Iron King Mine Property
 - - - Former Humboldt Smelter Property
 - Dewey-Humboldt Town Boundary

Note:
Image Source: Google Earth™; Image date November 6, 2015.
Accessed April 6, 2016.

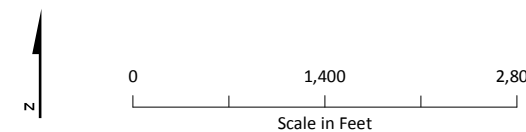
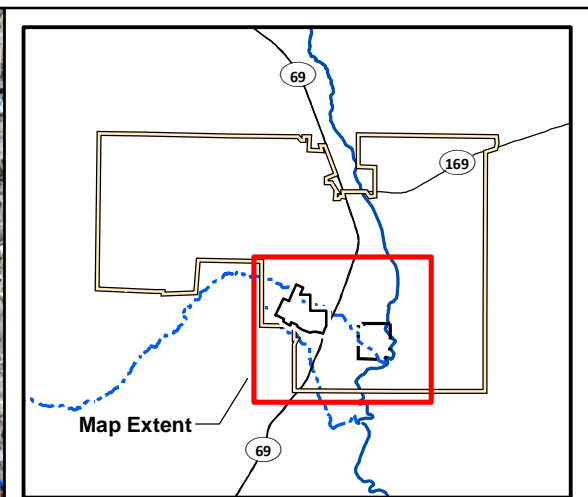
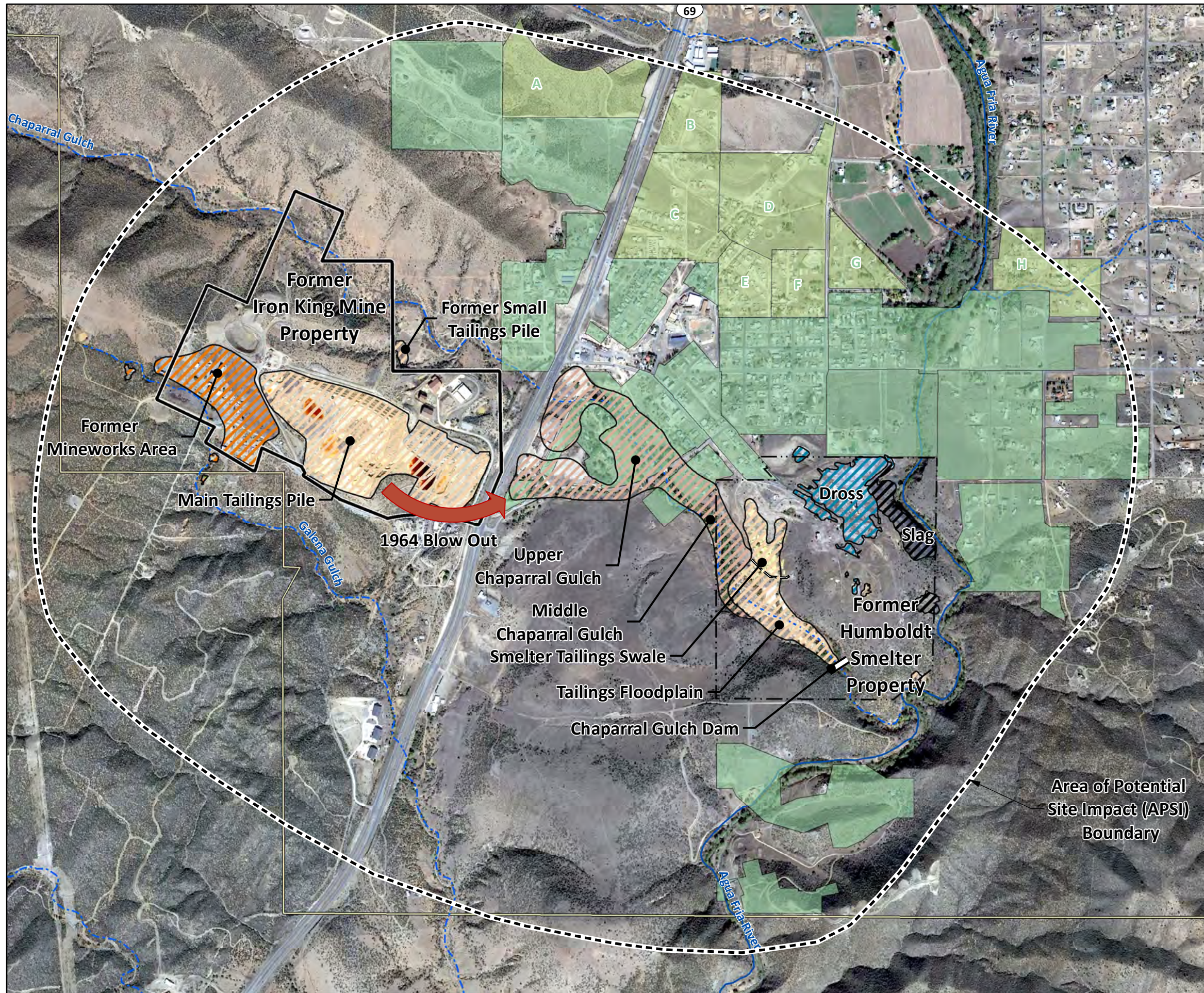


Figure 6-1
Area of Potential Site Impact
Iron King Mine – Humboldt Smelter Superfund Site
Dewey-Humboldt, Yavapai County, Arizona



- LEGEND**
- River
 - - - Intermittent Drainage
 - Screening Area Sampling
 - Yard-by-Yard Sampling
 - Waste Rock
 - Tailings
 - Upper and Middle Chaparral Gulch Areas
 - Slag Pile
 - Dross Area
 - Area of Potential Site Impact (APSI)
 - Former Iron King Mine Property
 - Former Humboldt Smelter Property
 - Dewey-Humboldt Town Boundary

Notes:
 EPA removed the Small Tailings Pile in 2011 and consolidated the waste with the Main Tailings Pile (E & E, 2012).
 Image Source: Google Earth™; Image date November 6, 2015.
 Accessed April 6, 2016.

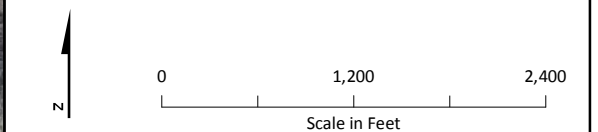
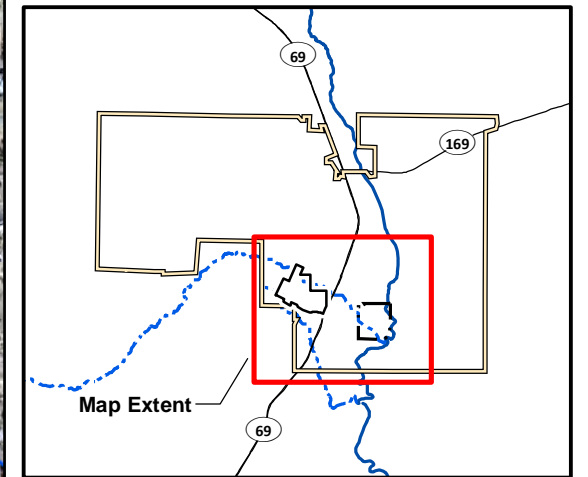
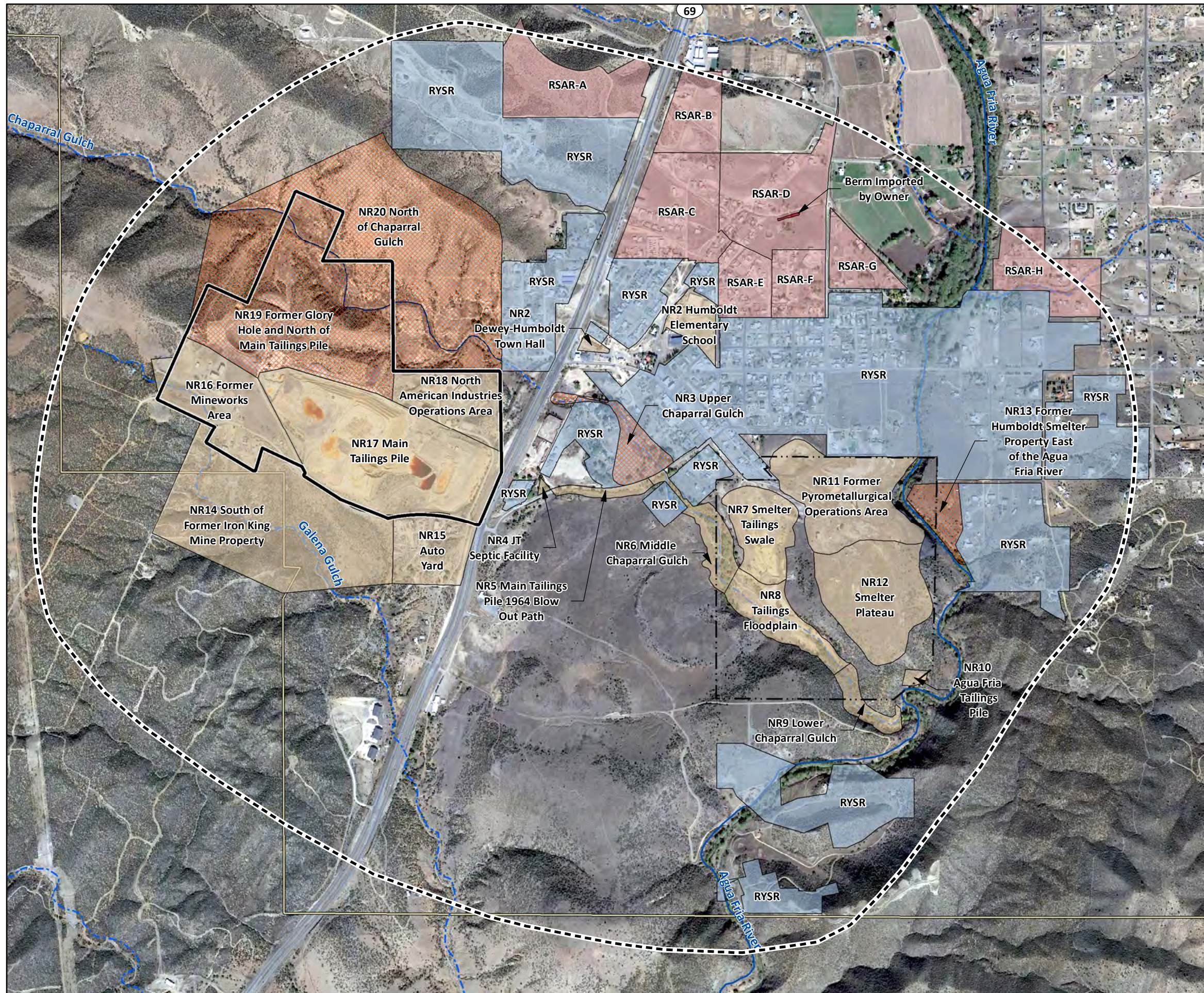


Figure 6-2
Sources of Contamination and Residential Sampling Areas
Iron King Mine – Humboldt Smelter Superfund Site
Dewey-Humboldt, Yavapai County, Arizona



- LEGEND**
- River
 - Intermittent Drainage
 - Residential Screening Area Risk (RSAR)
 - Residential Yard-Specific Risk (RYSR)
 - Non-Residential
 - Non-Residential (Possible Future Residential)
 - Imported Berm
 - Area of Potential Site Impact (APSI)
 - Former Iron King Mine Property
 - Former Humboldt Smelter Property
 - Dewey-Humboldt Town Boundary

Notes:
NR3 Upper Chaparral Gulch, designated as a non-residential (possible future residential) area, overlaps an area designated as RYSR.

Image Source: Google Earth™; Image date November 6, 2015.
Accessed April 6, 2016.

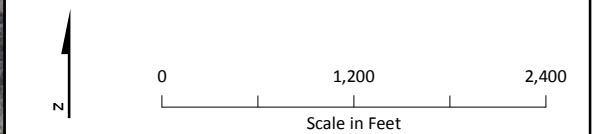


Figure 6-3
Exposure Areas
Iron King Mine – Humboldt Smelter Superfund Site
Dewey-Humboldt, Yavapai County, Arizona