

## Air Monitoring Summary Tables

The tables below summarize preliminary air monitoring data collected using Handheld DustTrak, SPM Flex, and MultiRAE Pro instruments.

**Project Name:** Morris Industrial Fire ER  
**Date/Time:** 07/19/21 08:31 to 07/19/21 12:21

**Weather**  
**Temperature:** 78°F, low of 63°F  
**Wind Speed:** 0 to 4 miles per hour  
**Wind Direction:** North/Northwest  
**Conditions:** Partly Cloudy

Fixed Discrete Air Monitoring Location 010 - Upwind					
Instrument	Analyte	Morris Industrial Fire Public Health Screening Level <sup>1</sup>	Public Health Screening Level Exceeded?	Number of Measurements	Concentration Range
MultiRAE Pro	H <sub>2</sub> S (ppm)	0.1 ppm	No	3	0.000 to 0.000
	CO (ppm)	--	No	3	0.00 to 0.00
	O <sub>2</sub> (%)	--	No	3	20.9 to 20.9
	LEL (%)	--	No	3	0.000 to 0.000
	VOC (ppm)	1 ppm	No	3	0.000 to 0.050
SPM Flex	HF	1 ppm	No	9	0.000 to 0.000
Handheld DustTrak	PM <sub>2.5</sub> (mg/m <sup>3</sup> )	0.025 mg/m <sup>3</sup>	Yes	3	0.015 to 0.028
	PM <sub>10</sub> (mg/m <sup>3</sup> )	0.05 mg/m <sup>3</sup>	No	3	0.016 to 0.028

Fixed Discrete Air Monitoring Location 011 - Crosswind/Downwind					
Instrument	Analyte	Morris Industrial Fire Public Health Screening Level <sup>1</sup>	Public Health Screening Level Exceeded?	Number of Measurements	Concentration Range
MultiRAE Pro	H <sub>2</sub> S (ppm)	0.1 ppm	No	4	0.000 to 0.000
	CO (ppm)	--	No	4	0.00 to 0.00
	O <sub>2</sub> (%)	--	No	4	20.9 to 20.9
	LEL (%)	--	No	4	0.000 to 0.000
	VOC (ppm)	1 ppm	No	4	0.000 to 0.075
SPM Flex	HF	1 ppm	No	12	0.000 to 0.000
Handheld DustTrak	PM <sub>2.5</sub> (mg/m <sup>3</sup> )	0.025 mg/m <sup>3</sup>	Yes	4	0.016 to 0.030
	PM <sub>10</sub> (mg/m <sup>3</sup> )	0.05 mg/m <sup>3</sup>	No	4	0.018 to 0.038

Fixed Discrete Air Monitoring Location 012 - Downwind					
Instrument	Analyte	Morris Industrial Fire Public Health Screening Level <sup>1</sup>	Public Health Screening Level Exceeded?	Number of Measurements	Concentration Range
MultiRAE Pro	H <sub>2</sub> S (ppm)	0.1 ppm	No	3	0.000 to 0.000
	CO (ppm)	--	No	3	0.00 to 0.00
	O <sub>2</sub> (%)	--	No	3	20.7 to 20.9
	LEL (%)	--	No	3	0.000 to 0.000
	VOC (ppm)	1 ppm	No	3	0.000 to 0.000
SPM Flex	HF	1 ppm	No	9	0.000 to 0.000
Handheld DustTrak	PM <sub>2.5</sub> (mg/m <sup>3</sup> )	0.025 mg/m <sup>3</sup>	Yes	3	0.021 to 0.026
	PM <sub>10</sub> (mg/m <sup>3</sup> )	0.05 mg/m <sup>3</sup>	No	3	0.026 to 0.031

Notes: See last page.

## Air Monitoring Summary Tables

The tables below summarize preliminary air monitoring data collected using Handheld DustTrak, SPM Flex, and MultiRAE Pro instruments.

**Project Name:** Morris Industrial Fire ER  
**Date/Time:** 07/19/21 08:31 to 07/19/21 12:21

**Weather**  
**Temperature:** 78°F, low of 63°F  
**Wind Speed:** 0 to 4 miles per hour  
**Wind Direction:** North/Northwest  
**Conditions:** Partly Cloudy

Fixed Discrete Air Monitoring Location 013 - Downwind					
Instrument	Analyte	Morris Industrial Fire Public Health Screening Level <sup>1</sup>	Public Health Screening Level Exceeded?	Number of Measurements	Concentration Range
MultiRAE Pro	H <sub>2</sub> S (ppm)	0.1 ppm	No	3	0.000 to 0.000
	CO (ppm)	--	No	3	0.00 to 0.00
	O <sub>2</sub> (%)	--	No	3	20.9 to 20.9
	LEL (%)	--	No	3	0.000 to 0.000
	VOC (ppm)	1 ppm	No	3	0.000 to 0.100
SPM Flex	HF	1 ppm	No	9	0.000 to 0.000
Handheld DustTrak	PM <sub>2.5</sub> (mg/m <sup>3</sup> )	0.025 mg/m <sup>3</sup>	Yes	3	0.018 to 0.032
	PM <sub>10</sub> (mg/m <sup>3</sup> )	0.05 mg/m <sup>3</sup>	No	3	0.019 to 0.043

Fixed Discrete Air Monitoring Location 014 - Downwind					
Instrument	Analyte	Morris Industrial Fire Public Health Screening Level <sup>1</sup>	Public Health Screening Level Exceeded?	Number of Measurements	Concentration Range
MultiRAE Pro	H <sub>2</sub> S (ppm)	0.1 ppm	No	3	0.000 to 0.000
	CO (ppm)	--	No	3	0.00 to 0.00
	O <sub>2</sub> (%)	--	No	3	20.7 to 20.9
	LEL (%)	--	No	3	0.000 to 0.000
	VOC (ppm)	1 ppm	No	3	0.000 to 0.000
SPM Flex	HF	1 ppm	No	9	0.000 to 0.000
Handheld DustTrak	PM <sub>2.5</sub> (mg/m <sup>3</sup> )	0.025 mg/m <sup>3</sup>	Yes	3	0.018 to 0.026
	PM <sub>10</sub> (mg/m <sup>3</sup> )	0.05 mg/m <sup>3</sup>	No	3	0.018 to 0.026

Fixed Discrete Air Monitoring Location 015 - Crosswind/Downwind					
Instrument	Analyte	Morris Industrial Fire Public Health Screening Level <sup>1</sup>	Public Health Screening Level Exceeded?	Number of Measurements	Concentration Range
MultiRAE Pro	H <sub>2</sub> S (ppm)	0.1 ppm	No	3	0.000 to 0.000
	CO (ppm)	--	No	3	0.00 to 0.00
	O <sub>2</sub> (%)	--	No	3	20.9 to 20.9
	LEL (%)	--	No	3	0.000 to 0.000
	VOC (ppm)	1 ppm	No	3	0.000 to 0.000
SPM Flex	HF	1 ppm	No	9	0.000 to 0.000
Handheld DustTrak	PM <sub>2.5</sub> (mg/m <sup>3</sup> )	0.025 mg/m <sup>3</sup>	Yes	3	0.015 to 0.035
	PM <sub>10</sub> (mg/m <sup>3</sup> )	0.05 mg/m <sup>3</sup>	No	3	0.015 to 0.037

Notes: See last page.

## Air Monitoring Summary Tables

The tables below summarize preliminary air monitoring data collected using Handheld DustTrak, SPM Flex, and MultiRAE Pro instruments.

**Project Name:** Morris Industrial Fire ER  
**Date/Time:** 07/19/21 08:31 to 07/19/21 12:21

**Weather**  
**Temperature:** 78°F, low of 63°F  
**Wind Speed:** 0 to 4 miles per hour  
**Wind Direction:** North/Northwest  
**Conditions:** Partly Cloudy

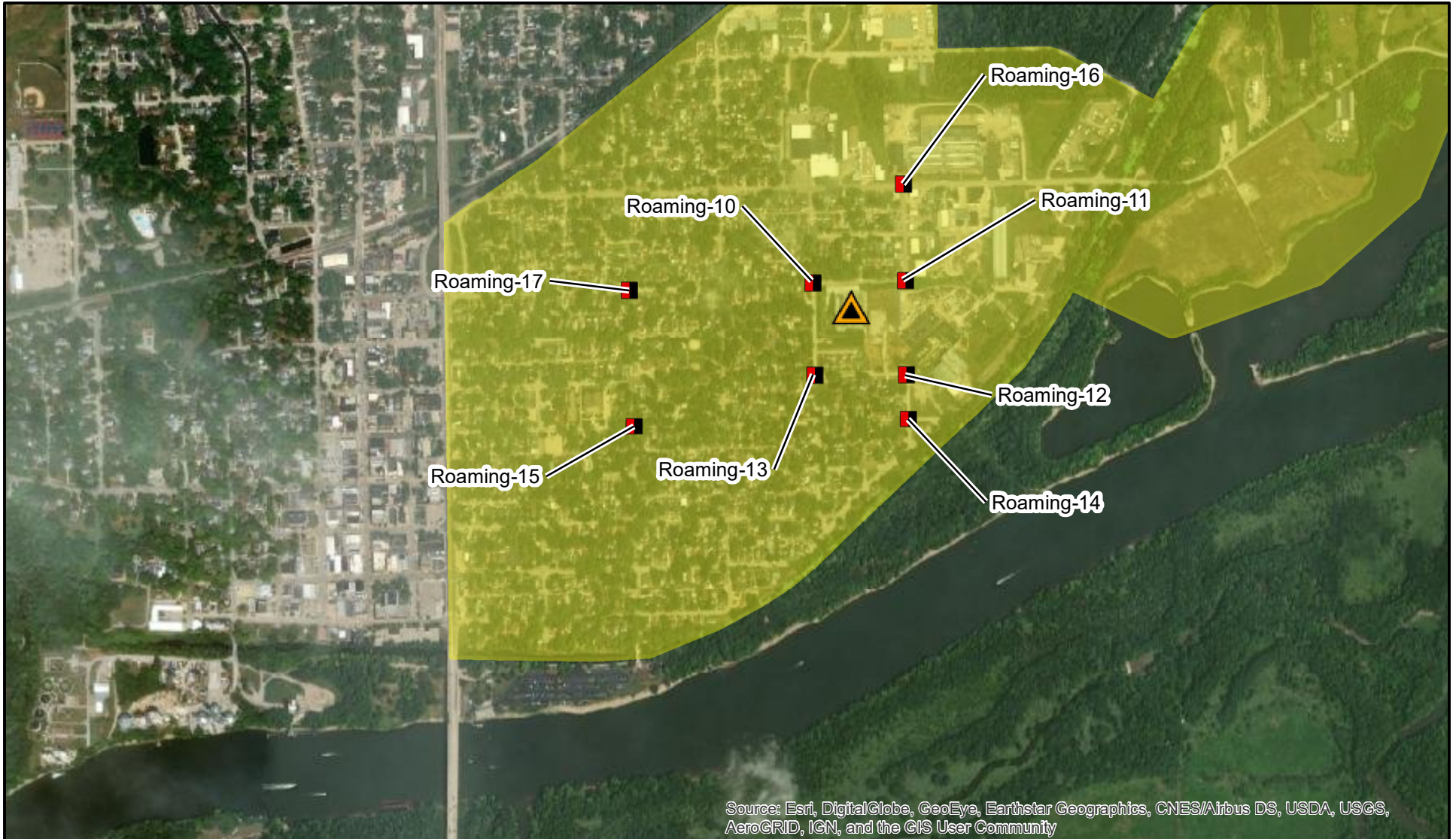
Fixed Discrete Air Monitoring Location 016 - Upwind					
Instrument	Analyte	Morris Industrial Fire Public Health Screening Level <sup>1</sup>	Public Health Screening Level Exceeded?	Number of Measurements	Concentration Range
MultiRAE Pro	H <sub>2</sub> S (ppm)	0.1 ppm	No	3	0.000 to 0.000
	CO (ppm)	--	No	3	0.00 to 0.00
	O <sub>2</sub> (%)	--	No	3	20.9 to 20.9
	LEL (%)	--	No	3	0.000 to 0.000
	VOC (ppm)	1 ppm	No	3	0.000 to 0.130
SPM Flex	HF	1 ppm	No	9	0.000 to 0.000
Handheld DustTrak	PM <sub>2.5</sub> (mg/m <sup>3</sup> )	0.025 mg/m <sup>3</sup>	No	3	0.016 to 0.023
	PM <sub>10</sub> (mg/m <sup>3</sup> )	0.05 mg/m <sup>3</sup>	No	3	0.016 to 0.027

Fixed Discrete Air Monitoring Location 017 - Crosswind/Upwind					
Instrument	Analyte	Morris Industrial Fire Public Health Screening Level <sup>1</sup>	Public Health Screening Level Exceeded?	Number of Measurements	Concentration Range
MultiRAE Pro	H <sub>2</sub> S (ppm)	0.1 ppm	No	3	0.000 to 0.000
	CO (ppm)	--	No	3	0.00 to 0.00
	O <sub>2</sub> (%)	--	No	3	20.9 to 20.9
	LEL (%)	--	No	3	0.000 to 0.000
	VOC (ppm)	1 ppm	No	3	0.000 to 0.010
SPM Flex	HF	1 ppm	No	9	0.000 to 0.000
Handheld DustTrak	PM <sub>2.5</sub> (mg/m <sup>3</sup> )	0.025 mg/m <sup>3</sup>	Yes	3	0.015 to 0.040
	PM <sub>10</sub> (mg/m <sup>3</sup> )	0.05 mg/m <sup>3</sup>	No	3	0.015 to 0.040

Comments
Start and stop times for each air monitoring instrument varies. The monitoring period is based on the earliest start time and latest stop time out of all units.
1 - Site-Specific Public Health Screening Levels are based on 1-hour time-weighted averages and were established by ATSDR. Fixed discrete monitoring readings are discrete readings, and so do not represent conditions over a full 1-hour period.
2 - PM <sub>2.5</sub> exceedances of site-specific screening levels were observed at the fixed discrete air monitoring locations during the monitoring period. There was no active fire, smoke or site activities conducted at the facility during the monitoring period.

### Notes:

CO - Carbon Monoxide  
H<sub>2</sub>S - Hydrogen Sulfide  
LEL - Lower Explosive Limit  
HF - Hydrogen Fluoride  
mg/m<sup>3</sup> - milligrams per cubic meter  
O<sub>2</sub> - Oxygen  
PM<sub>2.5</sub> - particles that are 2.5 micrometers and smaller  
PM<sub>10</sub> - particles that are 10 micrometers and smaller  
ppb - Parts per billion  
ppm - Parts per million  
VOC - Volatile organic compounds



Source: Esri, DigitalGlobe, GeoEye, Earthstar Geographics, CNES/Airbus DS, USDA, USGS, AeroGRID, IGN, and the GIS User Community

