



# Supply Creek Asbestos Site Inadvertent Discovery

Liv Trombadore  
USEPA, Region 9

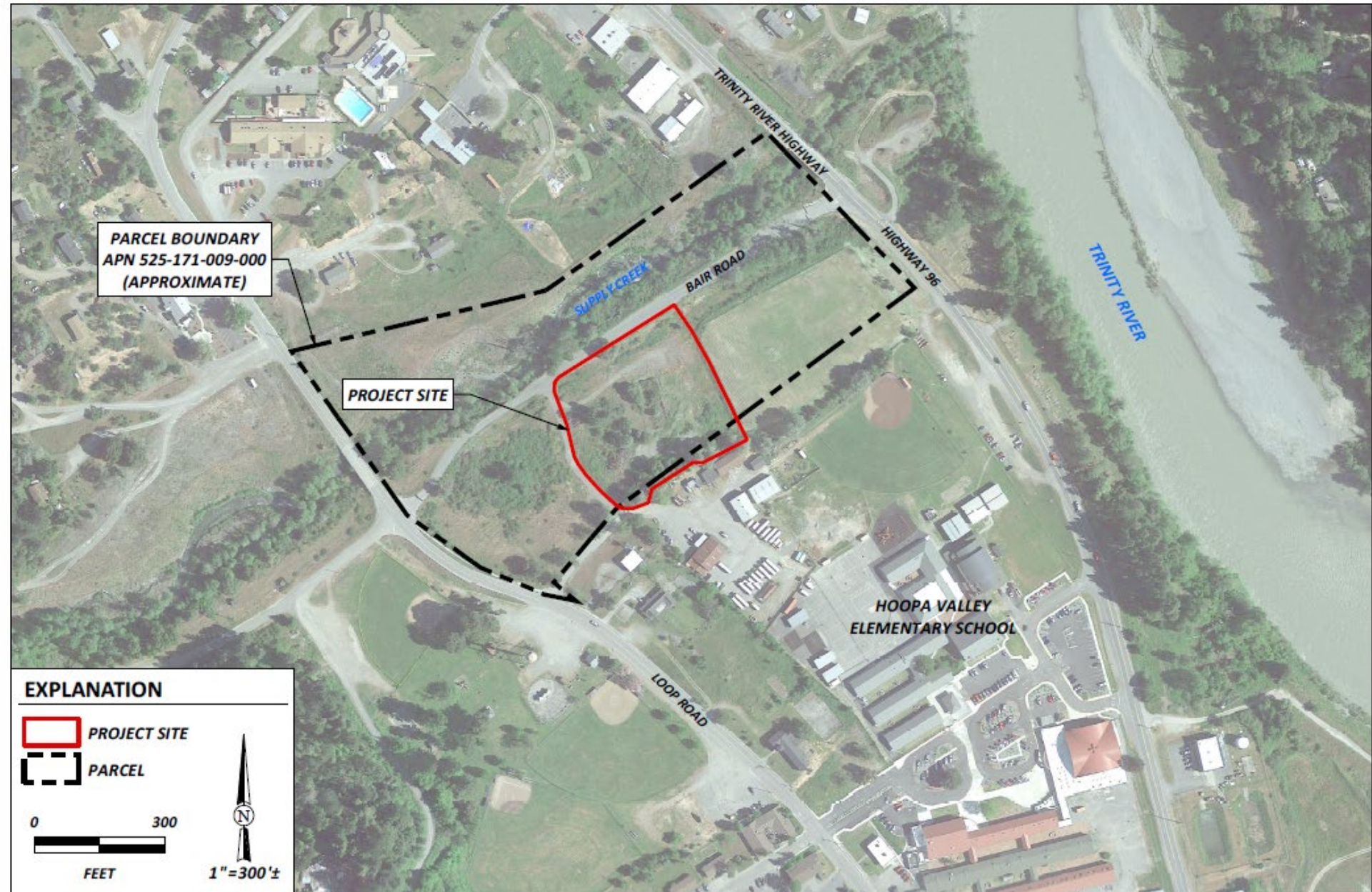




# Asbestos Debris







APN - ASSESSOR PARCEL NUMBER  
PARCEL DATA SOURCE: HUMBOLDT COUNTY GIS, 2020  
IMAGE SOURCE: GOOGLE EARTH, DATED 4/30/2019



Hoopa Valley Tribe  
Supply Creek Report of Findings  
Hoopa, California

August 2021

Figure2\_SiteMap

Site Map  
APN 525-171-009-000  
SHN 019227

Figure 2





# Pre-Removal Site Conditions





E:\Supply Creek Asbestos Site\Map\Supply Creek Asbestos.aprx 3/15/2022 12:56 AM brod.mak



Contract:  
Task Order:  
DCN:

PREPARED FOR  
EPA Region 9  
Pacific Southwest  
PREPARED BY  
Weston Solutions, Inc.  
Concord, CA 94530  
March 2022



Hoopa

**FIGURE 1**  
**Previous ACM Investigation**  
Supply Creek Asbestos Site  
Removal Action  
Hoopa, California





# Consultation Process

## National Historic Preservation Act

- Phone call and discussion with Hoopa THPO
- No cultural resources survey or on-site monitor
- Call in the case of discovery





# Bone Discovery on Site!

- Crew discovered bones on site during excavation
- Crew immediately stopped work and notified OSC by radio
- Have discussions with your crew ahead of time about what to do in case of unanticipated discovery!
- This is especially true when working with tribes/in Indian Country





# Bone Discovery on Site!





# Immediate Next Steps

- Protect discovery site!
- Notify Tribal EPA about bone discovery
- Tribe wanted to inspect the bone site





# Safety Approach for Bone Inspections

## OSC conferred with asbestos professional:

- A pathway to the bone area had already been cleared of asbestos
- All asbestos was non-friable
- Crew thoroughly wetted down site, especially pathway and bone area
- No work on-site (in any area) during visits to prevent dust
- Crew brought “Hudson sprayer” to assist with spraying down bones

## OSC ensured all visitors:

- Had a safety briefing
- Followed the established pathway (escorted by OSC!)
- Minimized time on site
- Wore gloves and booties
- Deconned appropriately
- Washed hands





# Site Visits & Bone Inspections

- START (documentation)
- Hoopa Tribal EPA
- Hoopa Tribal Cultural Monitor
- Hoopa THPO
- Osteologist



Site work was allowed to continue in other areas with THPO and osteologist approval as “the discovery was secure”



# Outcome

- Bones were confirmed to be animal (ungulate) and we were given the “all clear” to continue
- All of this took place in less than 48 hours!
- Discussions with Hoopa THPO about whether a cultural monitor needed to be on site moving forward
- EPA documented in POLREPs, with Records Center and will document in START reports





# The End!

Liv Trombadore  
trombadore.olivia@epa.gov  
415-243-77509

