



1

## Introductions

### • U.S. EPA Region VIII

- Valeriy Bizyayev – Federal On-Scene Coordinator
- Joyel Dhieux – Federal On-Scene Coordinator
- Barbara Benoy – Brownfield Project Manager
- Katherine Jenkins – Public Information Officer



### • Wyoming Department of Environmental Quality

- Cindi Martinez – Brownfield & Orphan Sites Remediation Program Supervisor
- Abigail Lashbrook – Hazardous Waste/Voluntary Remediation Program Project Manager
- Ben Luckey – Hazardous Waste/Voluntary Remediation Program Manager



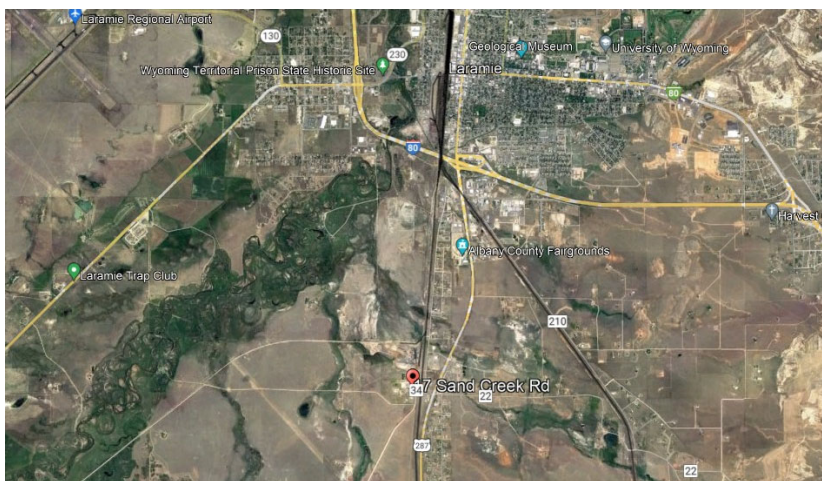
2

## Agenda

- Site History
- Wyoming Voluntary Remediation Program
- U.S. EPA Brownfields Assessment
- U.S. EPA Removal Action Assessment
- Next Steps



## Site Location



- Abandoned facility, located 2 miles south of Laramie, WY

## Brief Site History

- Alumina plant for DOD (1943)
- Alumina plant for Bureau of Mines (1952-1954)
- Aggregate production (1954-1965)
- Metal extraction from smelter waste, waste rock, and flue dust (1975-2001?)



## Brief Site History

- EPA RCRA violations (1980's and 1990's)
- EPA Site Assessment;  
WYDEQ Program  
(2011)
- EPA Brownfields  
Phase I/Phase II (2022)
- EPA Removal Program (2022)



## WDEQ Voluntary Remediation Program

- 2011: Site enters Voluntary Remediation Program
- 2011: Public Participation Plan implemented
- 2012 Initial site characterization conducted
- 2013 Supplementary workplan and work initiated
- 2014 Workplans approved for flue dust removal
- 2015 Flue dust removed from Building B-2
- 2018 Additional cleanup of sodium hydroxide tank bottoms/sludge
- 2019 Stabilization of non-friable asbestos
- 2020 – 2021 Covid halts work; discussions on next steps
- 2022 Request from VRP to EPA for Targeted Brownfields Assessment (TBA)
- 2022 EPA performs TBA, develops Phase I ESA
- 2023 Public Meeting, removal planned



7

## EPA Brownfields Program

- Phase I report:
  - Publicly available on <https://response.epa.gov/Nedlog>
- Phase II report in progress



8



## What is a Removal Action?

A removal action is a short-term response intended to stabilize or clean up an incident or site that poses a threat to public health or welfare.



## Propose Initial Actions

1. Secure facility from trespassers
  - Active illegal dumping occurring
  - Partying, bonfires, vandalism
2. Remove abandoned cylinders and chemicals
  - Estimating about ~30 total
3. Remove abandoned suspect PCB-transformers



## Next Steps

1. Continue assessment and take proposed initial actions.
2. Determine if other immediate hazards exist that warrant further Removal actions (arsenic, asbestos, etc...).
3. Continue to keep stakeholders informed.



## Contacts and Information



<https://response.epa.gov/Nedlog>